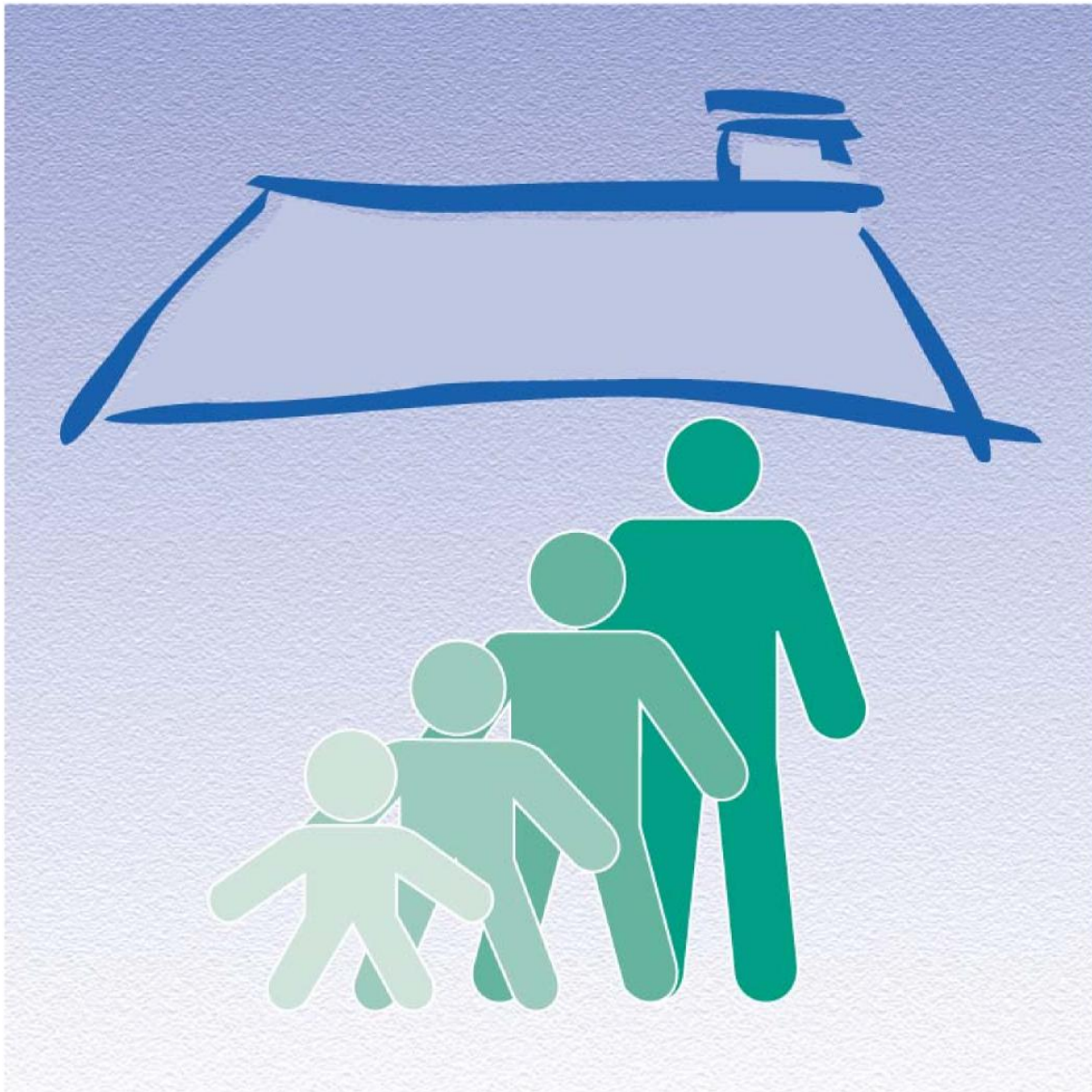


Canadian Community Health Survey (CCHS) - Healthy Aging

Public Use Microdata File (PUMF)
Approximate Sampling Variability Tables

November 2010



Statistics
Canada

Statistique
Canada

Canada

TABLE OF CONTENTS

INPUT DATA FOR SAMPLING VARIABILITY TABLES	3
<i>PROVINCES AND CANADA</i>	3
<i>CANADA BY AGE GROUP</i>	4
APPROXIMATE SAMPLING VARIABILITY TABLES.....	5
<i>CANADA</i>	5
<i>CANADA BY AGE GROUP</i>	6
AGE GROUP 45–54	6
AGE GROUP 55–64	7
AGE GROUP 65–74	8
AGE GROUP 75–84	9
AGE GROUP 85+	10
<i>PROVINCES</i>	11
NEWFOUNDLAND AND LABRADOR.....	11
PRINCE EDWARD ISLAND.....	12
NOVA SCOTIA	13
NEW BRUNSWICK.....	14
QUEBEC	15
ONTARIO.....	16
MANITOBA.....	17
SASKATCHEWAN	18
ALBERTA	19
BRITISH COLUMBIA.....	20
TABLES OF RELEASE CUT-OFFS FOR TOTALS	21
<i>PROVINCES AND CANADA</i>	21
<i>CANADA BY AGE GROUP</i>	22

INPUT DATA FOR SAMPLING VARIABILITY TABLES

Provinces and Canada

PROVINCE	DESIGN EFFECT	SAMPLE SIZE	POPULATION SIZE (aged 45 and older)
Newfoundland and Labrador	2.06	2,010	232,600
Prince Edward Island	1.76	1,650	62,327
Nova Scotia	1.94	2,282	417,657
New Brunswick	2.14	2,225	333,845
Quebec	2.27	5,217	3,357,092
Ontario	2.46	6,525	5,224,430
Manitoba	1.91	2,176	459,750
Saskatchewan	2.10	2,185	395,739
Alberta	2.20	2,735	1,264,065
British Columbia	2.55	3,860	1,888,002
CANADA	4.56	30,865	13,635,505

Canada by Age group

AGE GROUP	DESIGN EFFECT	SAMPLE SIZE	POPULATION SIZE (aged 45 and older)
45–54	3.30	5,166	5,247,633
55–64	2.64	9,330	4,020,433
65–74	2.33	6,975	2,407,389
75–84	2.33	5,320	1,468,364
85+	3.63	4,074	491,686

Canadian Community Health Survey (CCHS) – Healthy Aging – PUMF

Canadian Community Health Survey (CCHS) - Healthy Aging
 APPROXIMATE SAMPLING VARIABILITY TABLES
 Canada

NUMERATOR OF PERCENTAGE ('000)	ESTIMATED PERCENTAGE													
	0.1%	1.0%	2.0%	5.0%	10.0%	15.0%	20.0%	25.0%	30.0%	35.0%	40.0%	50.0%	70.0%	90.0%
1	141.9	141.2	140.5	138.3	134.6	130.9	126.9	122.9	118.8	114.4	109.9	100.4	77.7	44.9
2	100.3	99.9	99.4	97.8	95.2	92.5	89.8	86.9	84.0	80.9	77.7	71.0	55.0	31.7
3	81.9	81.5	81.1	79.9	77.7	75.5	73.3	71.0	68.6	66.1	63.5	57.9	44.9	25.9
4	70.9	70.6	70.3	69.2	67.3	65.4	63.5	61.5	59.4	57.2	55.0	50.2	38.9	22.4
5	63.4	63.2	62.8	61.9	60.2	58.5	56.8	55.0	53.1	51.2	49.2	44.9	34.8	20.1
6	57.9	57.7	57.4	56.5	55.0	53.4	51.8	50.2	48.5	46.7	44.9	41.0	31.7	18.3
7	53.6	53.4	53.1	52.3	50.9	49.5	48.0	46.5	44.9	43.3	41.6	37.9	29.4	17.0
8	50.2	49.9	49.7	48.9	47.6	46.3	44.9	43.5	42.0	40.5	38.9	35.5	27.5	15.9
9	47.3	47.1	46.8	46.1	44.9	43.6	42.3	41.0	39.6	38.1	36.6	33.5	25.9	15.0
10	44.9	44.7	44.4	43.7	42.6	41.4	40.1	38.9	37.6	36.2	34.8	31.7	24.6	14.2
11	42.8	42.6	42.4	41.7	40.6	39.5	38.3	37.1	35.8	34.5	33.1	30.3	23.4	13.5
12	41.0	40.8	40.6	39.9	38.9	37.8	36.6	35.5	34.3	33.0	31.7	29.0	22.4	13.0
13	39.3	39.2	39.0	38.4	37.3	36.3	35.2	34.1	32.9	31.7	30.5	27.8	21.6	12.4
14	*****	37.7	37.6	37.0	36.0	35.0	33.9	32.9	31.7	30.6	29.4	26.8	20.8	12.0
15	*****	36.5	36.3	35.7	34.8	33.8	32.8	31.7	30.7	29.5	28.4	25.9	20.1	11.6
16	*****	35.3	35.1	34.6	33.7	32.7	31.7	30.7	29.7	28.6	27.5	25.1	19.4	11.2
17	*****	34.3	34.1	33.6	32.7	31.7	30.8	29.8	28.8	27.8	26.7	24.3	18.9	10.9
18	*****	33.3	33.1	32.6	31.7	30.8	29.9	29.0	28.0	27.0	25.9	23.7	18.3	10.6
19	*****	32.4	32.2	31.7	30.9	30.0	29.1	28.2	27.2	26.3	25.2	23.0	17.8	10.3
20	*****	31.6	31.4	30.9	30.1	29.3	28.4	27.5	26.6	25.6	24.6	22.4	17.4	10.0
21	*****	30.8	30.7	30.2	29.4	28.6	27.7	26.8	25.9	25.0	24.0	21.9	17.0	9.8
22	*****	30.1	30.0	29.5	28.7	27.9	27.1	26.2	25.3	24.4	23.4	21.4	16.6	9.6
23	*****	29.4	29.3	28.8	28.1	27.3	26.5	25.6	24.8	23.9	22.9	20.9	16.2	9.4
24	*****	28.8	28.7	28.2	27.5	26.7	25.9	25.1	24.2	23.4	22.4	20.5	15.9	9.2
25	*****	28.2	28.1	27.7	26.9	26.2	25.4	24.6	23.8	22.9	22.0	20.1	15.5	9.0
30	*****	25.8	25.7	25.3	24.6	23.9	23.2	22.4	21.7	20.9	20.1	18.3	14.2	8.2
35	*****	23.9	23.8	23.4	22.8	22.1	21.5	20.8	20.1	19.3	18.6	17.0	13.1	7.6
40	*****	22.3	22.2	21.9	21.3	20.7	20.1	19.4	18.8	18.1	17.4	15.9	12.3	7.1
45	*****	21.1	20.9	20.6	20.1	19.5	18.9	18.3	17.7	17.1	16.4	15.0	11.6	6.7
50	*****	20.0	19.9	19.6	19.0	18.5	18.0	17.4	16.8	16.2	15.5	14.2	11.0	6.3
55	*****	19.0	18.9	18.7	18.2	17.6	17.1	16.6	16.0	15.4	14.8	13.5	10.5	6.1
60	*****	18.2	18.1	17.9	17.4	16.9	16.4	15.9	15.3	14.8	14.2	13.0	10.0	5.8
65	*****	17.5	17.4	17.2	16.7	16.2	15.7	15.2	14.7	14.2	13.6	12.4	9.6	5.6
70	*****	16.9	16.8	16.5	16.1	15.6	15.2	14.7	14.2	13.7	13.1	12.0	9.3	5.4
75	*****	16.3	16.2	16.0	15.5	15.1	14.7	14.2	13.7	13.2	12.7	11.6	9.0	5.2
80	*****	15.8	15.7	15.5	15.1	14.6	14.2	13.7	13.3	12.8	12.3	11.2	8.7	5.0
85	*****	15.3	15.2	15.0	14.6	14.2	13.8	13.3	12.9	12.4	11.9	10.9	8.4	4.9
90	*****	14.9	14.8	14.6	14.2	13.8	13.4	13.0	12.5	12.1	11.6	10.6	8.2	4.7
95	*****	14.5	14.4	14.2	13.8	13.4	13.0	12.6	12.2	11.7	11.3	10.3	8.0	4.6
100	*****	14.1	14.1	13.8	13.5	13.1	12.7	12.3	11.9	11.4	11.0	10.0	7.8	4.5
125	*****	12.6	12.6	12.4	12.0	11.7	11.4	11.0	10.6	10.2	9.8	9.0	7.0	4.0
150	*****	11.5	11.3	11.0	10.7	10.4	10.0	9.7	9.3	9.0	8.2	6.3	3.7	3.7
200	*****	9.9	9.8	9.5	9.3	9.0	8.7	8.4	8.1	7.8	7.1	5.5	3.2	3.2
250	*****	8.9	8.7	8.5	8.3	8.0	7.8	7.5	7.2	7.0	6.3	4.9	2.8	2.8
300	*****	8.0	7.8	7.6	7.3	7.1	6.9	6.6	6.3	6.1	5.9	5.4	4.2	2.6
350	*****	7.4	7.2	7.0	6.8	6.6	6.3	6.1	5.9	5.7	5.5	5.0	3.9	2.2
400	*****	6.9	6.7	6.5	6.3	6.1	5.9	5.7	5.5	5.3	5.1	4.9	3.5	2.0
450	*****	6.5	6.3	6.2	6.0	5.8	5.6	5.4	5.2	5.0	4.7	3.7	2.1	2.1
500	*****	6.2	6.0	5.9	5.7	5.5	5.3	5.1	4.9	4.7	4.5	3.5	2.0	2.0
750	*****	4.9	4.8	4.6	4.5	4.3	4.2	4.0	3.7	3.5	3.2	2.5	1.4	1.6
1000	*****	4.3	4.1	4.0	3.9	3.8	3.6	3.5	3.2	3.0	2.8	2.0	1.2	1.4
1500	*****	3.4	3.3	3.2	3.1	3.0	2.8	2.6	2.5	2.2	2.0	1.4	0.8	1.2
2000	*****	2.9	2.8	2.7	2.6	2.5	2.2	2.1	2.0	1.8	1.6	1.2	0.7	1.0
3000	*****	2.2	2.2	2.1	2.0	1.8	1.6	1.4	1.2	1.0	0.8	0.6	0.4	0.8
4000	*****	1.9	1.8	1.7	1.6	1.4	1.2	1.0	0.8	0.6	0.5	0.4	0.3	0.7
5000	*****	1.6	1.4	1.3	1.2	1.0	0.8	0.6	0.5	0.4	0.3	0.2	0.2	0.6
6000	*****	1.3	1.0	0.9	0.8	0.7	0.6	0.5	0.4	0.3	0.2	0.2	0.2	0.6
7000	*****	0.9	0.9	0.8	0.7	0.6	0.5	0.4	0.3	0.2	0.2	0.2	0.2	0.5
8000	*****	0.9	0.8	0.7	0.6	0.5	0.4	0.3	0.2	0.2	0.2	0.2	0.2	0.5
9000	*****	0.8	0.7	0.6	0.5	0.4	0.3	0.2	0.2	0.2	0.2	0.2	0.2	0.5
10000	*****	0.4	0.4	0.3	0.3	0.2	0.2	0.2	0.2	0.2	0.2	0.2	0.2	0.4

NOTE: FOR CORRECT USAGE OF THESE TABLES PLEASE REFER TO MICRODATA DOCUMENTATION

Canadian Community Health Survey (CCHS) – Healthy Aging – PUMF

Canadian Community Health Survey (CCHS) - Healthy Aging
Canada by Age Group

Age group 45-54

NUMERATOR OF PERCENTAGE ('000)	ESTIMATED PERCENTAGE													
	0.1%	1.0%	2.0%	5.0%	10.0%	15.0%	20.0%	25.0%	30.0%	35.0%	40.0%	50.0%	70.0%	90.0%
1	183.0	182.2	181.2	178.5	173.7	168.8	163.8	158.6	153.2	147.6	141.8	129.5	100.3	57.9
2	129.4	128.8	128.2	126.2	122.8	119.4	115.8	112.1	108.3	104.4	100.3	91.5	70.9	40.9
3	105.7	105.2	104.6	103.0	100.3	97.5	94.5	91.5	88.4	85.2	81.9	74.7	57.9	33.4
4	91.5	91.1	90.6	89.2	86.8	84.4	81.9	79.3	76.6	73.8	70.9	64.7	50.1	28.9
5	81.8	81.5	81.1	79.8	77.7	75.5	73.2	70.9	68.5	66.0	63.4	57.9	44.8	25.9
6	*****	74.4	74.0	72.9	70.9	68.9	66.9	64.7	62.5	60.3	57.9	52.9	40.9	23.6
7	*****	68.9	68.5	67.4	65.6	63.8	61.9	59.9	57.9	55.8	53.6	48.9	37.9	21.9
8	*****	64.4	64.1	63.1	61.4	59.7	57.9	56.1	54.2	52.2	50.1	45.8	35.5	20.5
9	*****	60.7	60.4	59.5	57.9	56.3	54.6	52.9	51.1	49.2	47.3	43.2	33.4	19.3
10	*****	57.6	57.3	56.4	54.9	53.4	51.8	50.1	48.4	46.7	44.8	40.9	31.7	18.3
11	*****	54.9	54.6	53.8	52.4	50.9	49.4	47.8	46.2	44.5	42.8	39.0	30.2	17.5
12	*****	52.6	52.3	51.5	50.1	48.7	47.3	45.8	44.2	42.6	40.9	37.4	28.9	16.7
13	*****	50.5	50.3	49.5	48.2	46.8	45.4	44.0	42.5	40.9	39.3	35.9	27.8	16.1
14	*****	48.7	48.4	47.7	46.4	45.1	43.8	42.4	40.9	39.5	37.9	34.6	26.8	15.5
15	*****	47.0	46.8	46.1	44.8	43.6	42.3	40.9	39.6	38.1	36.6	33.4	25.9	14.9
16	*****	45.5	45.3	44.6	43.4	42.2	40.9	39.6	38.3	36.9	35.5	32.4	25.1	14.5
17	*****	44.2	44.0	43.3	42.1	40.9	39.7	38.5	37.2	35.8	34.4	31.4	24.3	14.0
18	*****	42.9	42.7	42.1	40.9	39.8	38.6	37.4	36.1	34.8	33.4	30.5	23.6	13.6
19	*****	41.8	41.6	40.9	39.8	38.7	37.6	36.4	35.1	33.9	32.5	29.7	23.0	13.3
20	*****	40.7	40.5	39.9	38.8	37.7	36.6	35.5	34.3	33.0	31.7	28.9	22.4	12.9
21	*****	39.8	39.6	38.9	37.9	36.8	35.7	34.6	33.4	32.2	30.9	28.3	21.9	12.6
22	*****	38.8	38.6	38.0	37.0	36.0	34.9	33.8	32.7	31.5	30.2	27.6	21.4	12.3
23	*****	38.0	37.8	37.2	36.2	35.2	34.1	33.1	31.9	30.8	29.6	27.0	20.9	12.1
24	*****	37.2	37.0	36.4	35.5	34.5	33.4	32.4	31.3	30.1	28.9	26.4	20.5	11.8
25	*****	36.4	36.2	35.7	34.7	33.8	32.8	31.7	30.6	29.5	28.4	25.9	20.1	11.6
30	*****	33.3	33.1	32.6	31.7	30.8	29.9	28.9	28.0	26.9	25.9	23.6	18.3	10.6
35	*****	30.8	30.6	30.2	29.4	28.5	27.7	26.8	25.9	25.0	24.0	21.9	17.0	9.8
40	*****	28.8	28.7	28.2	27.5	26.7	25.9	25.1	24.2	23.3	22.4	20.5	15.9	9.2
45	*****	27.2	27.0	26.6	25.9	25.2	24.4	23.6	22.8	22.0	21.1	19.3	14.9	8.6
50	*****	25.8	25.6	25.2	24.6	23.9	23.2	22.4	21.7	20.9	20.1	18.3	14.2	8.2
55	*****	24.4	24.4	24.1	23.4	22.8	22.1	21.4	20.7	19.9	19.1	17.5	13.5	7.8
60	*****	23.4	23.4	23.0	22.4	21.8	21.1	20.5	19.8	19.1	18.3	16.7	12.9	7.5
65	*****	22.5	22.5	22.1	21.5	20.9	20.3	19.7	19.0	18.3	17.6	16.1	12.4	7.2
70	*****	21.7	21.3	20.8	20.2	19.6	19.0	18.3	17.6	17.0	16.4	14.9	11.6	6.9
75	*****	20.9	20.6	20.1	19.5	18.9	18.3	17.7	17.1	16.5	15.9	14.5	11.2	6.7
80	*****	20.3	20.0	19.4	18.9	18.3	17.7	17.1	16.5	15.9	15.3	13.9	10.6	6.5
85	*****	19.7	19.4	18.8	18.3	17.8	17.2	16.6	16.0	15.4	14.8	13.4	10.1	6.3
90	*****	19.1	18.8	18.3	17.8	17.3	16.7	16.1	15.6	14.9	14.3	12.9	9.6	6.1
95	*****	18.6	18.3	17.8	17.3	16.8	16.3	15.7	15.1	14.6	14.0	12.6	9.3	5.9
100	*****	18.1	17.8	17.4	16.9	16.4	15.9	15.3	14.8	14.2	13.6	12.2	8.9	5.8
125	*****	16.0	15.5	15.1	14.6	14.2	13.7	13.2	12.7	12.2	11.6	10.2	7.6	5.2
150	*****	14.6	14.2	13.8	13.4	12.9	12.5	12.1	11.6	11.1	10.6	9.2	6.7	4.7
200	*****	12.6	12.3	11.9	11.6	11.2	10.8	10.4	10.0	9.6	9.2	7.8	5.7	4.1
250	*****	11.3	11.0	10.7	10.4	10.0	9.7	9.3	9.0	8.6	8.2	6.9	4.9	3.7
300	*****	10.0	9.7	9.5	9.2	8.8	8.5	8.2	7.8	7.5	7.1	5.9	4.1	3.3
350	*****	9.3	9.0	8.8	8.5	8.2	7.9	7.6	7.3	6.9	6.6	5.4	3.8	3.1
400	*****	8.7	8.4	8.2	7.9	7.7	7.4	7.1	6.8	6.5	6.2	5.0	3.5	2.9
450	*****	8.2	8.0	7.7	7.5	7.2	7.0	6.7	6.4	6.1	5.8	4.6	3.1	2.7
500	*****	7.8	7.5	7.3	7.1	6.9	6.6	6.3	6.0	5.7	5.4	4.2	2.9	2.6
750	*****	6.2	6.0	5.8	5.6	5.4	5.2	4.9	4.7	4.5	4.3	3.1	2.1	2.1
1000	*****	5.2	5.0	4.8	4.6	4.4	4.2	4.0	3.8	3.6	3.4	2.2	1.5	1.8
1500	*****	4.0	3.8	3.6	3.4	3.2	3.0	2.8	2.6	2.4	2.2	1.5	1.0	1.5
2000	*****	3.2	2.9	2.7	2.5	2.3	2.1	1.9	1.7	1.5	1.3	0.9	0.6	1.3
3000	*****	1.8	1.6	1.4	1.2	1.0	0.9	0.7	0.6	0.5	0.4	0.2	0.1	1.1
4000	*****	0.9	0.8	0.7	0.6	0.5	0.4	0.3	0.2	0.2	0.1	0.0	0.0	0.9

NOTE: FOR CORRECT USAGE OF THESE TABLES PLEASE REFER TO MICRODATA DOCUMENTATION

Canadian Community Health Survey (CCHS) – Healthy Aging – PUMF

Canadian Community Health Survey (CCHS) - Healthy Aging

Age group 55-64

NUMERATOR OF PERCENTAGE ('000)	ESTIMATED PERCENTAGE													
	0.1%	1.0%	2.0%	5.0%	10.0%	15.0%	20.0%	25.0%	30.0%	35.0%	40.0%	50.0%	70.0%	90.0%
1	106.6	106.1	105.6	104.0	101.2	98.3	95.4	92.4	89.2	86.0	82.6	75.4	58.4	33.7
2	75.4	75.0	74.7	73.5	71.5	69.5	67.5	65.3	63.1	60.8	58.4	53.3	41.3	23.8
3	61.5	61.3	61.0	60.0	58.4	56.8	55.1	53.3	51.5	49.6	47.7	43.5	33.7	19.5
4	53.3	53.1	52.8	52.0	50.6	49.2	47.7	46.2	44.6	43.0	41.3	37.7	29.2	16.9
5	*****	47.5	47.2	46.5	45.3	44.0	42.7	41.3	39.9	38.5	36.9	33.7	26.1	15.1
6	*****	43.3	43.1	42.4	41.3	40.1	38.9	37.7	36.4	35.1	33.7	30.8	23.8	13.8
7	*****	40.1	39.9	39.3	38.2	37.2	36.1	34.9	33.7	32.5	31.2	28.5	22.1	12.7
8	*****	37.5	37.3	36.8	35.8	34.8	33.7	32.7	31.6	30.4	29.2	26.7	20.7	11.9
9	*****	35.4	35.2	34.7	33.7	32.8	31.8	30.8	29.7	28.7	27.5	25.1	19.5	11.2
10	*****	33.6	33.4	32.9	32.0	31.1	30.2	29.2	28.2	27.2	26.1	23.8	18.5	10.7
11	*****	32.0	31.8	31.3	30.5	29.6	28.8	27.9	26.9	25.9	24.9	22.7	17.6	10.2
12	*****	30.6	30.5	30.0	29.2	28.4	27.5	26.7	25.8	24.8	23.8	21.8	16.9	9.7
13	*****	29.4	29.3	28.8	28.1	27.3	26.5	25.6	24.7	23.8	22.9	20.9	16.2	9.4
14	*****	28.4	28.2	27.8	27.0	26.3	25.5	24.7	23.8	23.0	22.1	20.2	15.6	9.0
15	*****	27.4	27.3	26.8	26.1	25.4	24.6	23.8	23.0	22.2	21.3	19.5	15.1	8.7
16	*****	26.5	26.4	26.0	25.3	24.6	23.8	23.1	22.3	21.5	20.7	18.9	14.6	8.4
17	*****	25.7	25.6	25.2	24.5	23.8	23.1	22.4	21.6	20.9	20.0	18.3	14.2	8.2
18	*****	25.0	24.9	24.5	23.8	23.2	22.5	21.8	21.0	20.3	19.5	17.8	13.8	7.9
19	*****	24.3	24.2	23.8	23.2	22.6	21.9	21.2	20.5	19.7	19.0	17.3	13.4	7.7
20	*****	23.7	23.6	23.2	22.6	22.0	21.3	20.7	20.0	19.2	18.5	16.9	13.1	7.5
21	*****	23.2	23.0	22.7	22.1	21.5	20.8	20.2	19.5	18.8	18.0	16.5	12.7	7.4
22	*****	22.6	22.5	22.2	21.6	21.0	20.3	19.7	19.0	18.3	17.6	16.1	12.5	7.2
23	*****	22.1	22.0	21.7	21.1	20.5	19.9	19.3	18.6	17.9	17.2	15.7	12.2	7.0
24	*****	21.7	21.6	21.2	20.7	20.1	19.5	18.9	18.2	17.6	16.9	15.4	11.9	6.9
25	*****	21.2	21.1	20.8	20.2	19.7	19.1	18.5	17.8	17.2	16.5	15.1	11.7	6.7
30	*****	19.4	19.3	19.0	18.5	18.0	17.4	16.9	16.3	15.7	15.1	13.8	10.7	6.2
35	*****	17.9	17.8	17.6	17.1	16.6	16.1	15.6	15.1	14.5	14.0	12.7	9.9	5.7
40	*****	16.8	16.7	16.4	16.0	15.5	15.1	14.6	14.1	13.6	13.1	11.9	9.2	5.3
45	*****	15.7	15.5	15.1	14.7	14.2	13.8	13.3	12.8	12.3	11.8	10.7	8.7	5.0
50	*****	14.9	14.7	14.3	13.9	13.5	13.1	12.6	12.2	11.7	11.2	10.7	8.3	4.8
55	*****	14.2	14.0	13.6	13.3	12.9	12.5	12.0	11.6	11.1	10.6	10.2	7.9	4.5
60	*****	13.6	13.4	13.1	12.7	12.3	11.9	11.5	11.1	10.7	10.2	9.7	7.5	4.4
65	*****	13.1	12.9	12.6	12.2	11.8	11.5	11.1	10.7	10.2	9.7	9.4	7.2	4.2
70	*****	12.6	12.4	12.1	11.8	11.4	11.0	10.7	10.3	9.9	9.5	9.0	7.0	4.0
75	*****	12.2	12.0	11.7	11.4	11.0	10.7	10.3	9.9	9.5	9.1	8.7	6.7	3.9
80	*****	11.8	11.6	11.3	11.0	10.7	10.3	10.0	9.6	9.2	8.8	8.4	6.5	3.8
85	*****	11.3	11.0	10.7	10.3	10.0	9.7	9.3	9.0	8.6	8.2	7.8	6.3	3.7
90	*****	11.0	10.7	10.4	10.1	9.7	9.4	9.1	8.7	8.4	8.0	7.6	6.2	3.6
95	*****	10.7	10.4	10.1	9.8	9.5	9.2	8.8	8.5	8.2	7.8	7.4	6.0	3.5
100	*****	10.4	10.1	9.8	9.5	9.2	8.9	8.6	8.3	8.0	7.6	7.2	5.8	3.4
125	*****	9.3	9.1	8.8	8.5	8.3	8.0	7.7	7.4	7.1	6.7	6.3	5.2	3.0
150	*****	8.5	8.3	8.0	7.8	7.5	7.3	7.0	6.7	6.4	6.1	5.8	4.8	2.8
200	*****	7.4	7.2	7.0	6.7	6.5	6.3	6.1	5.8	5.5	5.3	5.0	4.1	2.4
250	*****	6.4	6.2	6.0	5.8	5.6	5.4	5.2	4.9	4.7	4.5	4.3	3.7	2.1
300	*****	5.8	5.7	5.5	5.3	5.2	5.0	4.8	4.6	4.4	4.2	4.0	3.4	1.9
350	*****	5.4	5.3	5.1	4.9	4.8	4.6	4.4	4.2	4.0	3.8	3.6	3.1	1.8
400	*****	5.1	4.9	4.8	4.6	4.5	4.3	4.1	3.9	3.7	3.5	3.3	2.9	1.7
450	*****	4.6	4.5	4.4	4.2	4.1	3.9	3.7	3.5	3.3	3.1	2.9	2.6	1.6
500	*****	4.4	4.3	4.1	4.0	3.8	3.7	3.5	3.3	3.1	2.9	2.7	2.4	1.5
750	*****	3.5	3.4	3.3	3.1	3.0	2.8	2.7	2.5	2.4	2.2	2.1	1.8	1.2
1000	*****	2.9	2.8	2.7	2.5	2.4	2.2	2.1	1.9	1.8	1.6	1.5	1.3	1.1
1500	*****	2.1	1.9	1.8	1.6	1.5	1.4	1.2	1.1	1.0	0.9	0.8	0.7	0.9
2000	*****	1.7	1.6	1.5	1.3	1.2	1.1	1.0	0.9	0.8	0.7	0.6	0.5	0.8
3000	*****	1.3	1.2	1.1	1.0	0.9	0.8	0.7	0.6	0.5	0.4	0.3	0.2	0.6

NOTE: FOR CORRECT USAGE OF THESE TABLES PLEASE REFER TO MICRODATA DOCUMENTATION

Canadian Community Health Survey (CCHS) – Healthy Aging – PUMF

Canadian Community Health Survey (CCHS) - Healthy Aging

Age group 65-74

NUMERATOR OF PERCENTAGE ('000)	ESTIMATED PERCENTAGE													
	0.1%	1.0%	2.0%	5.0%	10.0%	15.0%	20.0%	25.0%	30.0%	35.0%	40.0%	50.0%	70.0%	90.0%
1	89.6	89.2	88.8	87.4	85.1	82.7	80.2	77.7	75.0	72.3	69.5	63.4	49.1	28.4
2	63.4	63.1	62.8	61.8	60.2	58.5	56.7	54.9	53.1	51.1	49.1	44.8	34.7	20.1
3	*****	51.5	51.3	50.5	49.1	47.7	46.3	44.8	43.3	41.7	40.1	36.6	28.4	16.4
4	*****	44.6	44.4	43.7	42.5	41.3	40.1	38.8	37.5	36.1	34.7	31.7	24.6	14.2
5	*****	39.9	39.7	39.1	38.0	37.0	35.9	34.7	33.6	32.3	31.1	28.4	22.0	12.7
6	*****	36.4	36.2	35.7	34.7	33.8	32.7	31.7	30.6	29.5	28.4	25.9	20.1	11.6
7	*****	33.7	33.6	33.0	32.2	31.2	30.3	29.4	28.4	27.3	26.3	24.0	18.6	10.7
8	*****	31.5	31.4	30.9	30.1	29.2	28.4	27.5	26.5	25.6	24.6	22.4	17.4	10.0
9	*****	29.7	29.6	29.1	28.4	27.6	26.7	25.9	25.0	24.1	23.2	21.1	16.4	9.5
10	*****	28.2	28.1	27.6	26.9	26.1	25.4	24.6	23.7	22.9	22.0	20.1	15.5	9.0
11	*****	26.9	26.8	26.4	25.7	24.9	24.2	23.4	22.6	21.8	20.9	19.1	14.8	8.6
12	*****	25.8	25.6	25.2	24.6	23.9	23.2	22.4	21.7	20.9	20.1	18.3	14.2	8.2
13	*****	24.7	24.6	24.2	23.6	22.9	22.2	21.5	20.8	20.1	19.3	17.6	13.6	7.9
14	*****	23.8	23.7	23.4	22.7	22.1	21.4	20.8	20.1	19.3	18.6	16.9	13.1	7.6
15	*****	23.0	22.9	22.6	22.0	21.3	20.7	20.1	19.4	18.7	17.9	16.4	12.7	7.3
16	*****	22.3	22.2	21.9	21.3	20.7	20.1	19.4	18.8	18.1	17.4	15.9	12.3	7.1
17	*****	21.6	21.5	21.2	20.6	20.1	19.5	18.8	18.2	17.5	16.8	15.4	11.9	6.9
18	*****	21.0	20.9	20.6	20.1	19.5	18.9	18.3	17.7	17.0	16.4	14.9	11.6	6.7
19	*****	20.5	20.4	20.1	19.5	19.0	18.4	17.8	17.2	16.6	15.9	14.5	11.3	6.5
20	*****	20.0	19.9	19.5	19.0	18.5	17.9	17.4	16.8	16.2	15.5	14.2	11.0	6.3
21	*****	19.5	19.4	19.1	18.6	18.0	17.5	16.9	16.4	15.8	15.2	13.8	10.7	6.2
22	*****	19.0	18.9	18.6	18.1	17.6	17.1	16.6	16.0	15.4	14.8	13.5	10.5	6.0
23	*****	18.6	18.5	18.2	17.7	17.2	16.7	16.2	15.6	15.1	14.5	13.2	10.2	5.9
24	*****	18.2	18.1	17.8	17.4	16.9	16.4	15.9	15.3	14.8	14.2	12.9	10.0	5.8
25	*****	17.8	17.8	17.5	17.0	16.5	16.0	15.5	15.0	14.5	13.9	12.7	9.8	5.7
30	*****	16.2	16.0	15.5	15.1	14.6	14.2	13.7	13.2	12.7	12.1	11.6	9.0	5.2
35	*****	15.0	14.8	14.4	14.0	13.6	13.1	12.7	12.2	11.7	11.2	10.7	8.3	4.8
40	*****	14.0	13.8	13.5	13.1	12.7	12.3	11.9	11.4	11.0	10.6	10.0	7.8	4.5
45	*****	13.2	13.0	12.7	12.3	12.0	11.6	11.2	10.8	10.4	9.9	9.5	7.3	4.2
50	*****	12.4	12.0	11.7	11.3	11.0	10.6	10.2	9.8	9.4	9.0	8.6	6.9	4.0
55	*****	11.8	11.5	11.1	10.8	10.5	10.1	9.7	9.4	9.0	8.6	8.2	6.6	3.8
60	*****	11.3	11.0	10.7	10.4	10.0	9.7	9.3	9.0	8.6	8.2	7.8	6.3	3.7
65	*****	10.8	10.6	10.3	9.9	9.6	9.3	9.0	8.6	8.3	7.9	7.5	6.1	3.5
70	*****	10.4	10.2	9.9	9.6	9.3	9.0	8.6	8.3	8.0	7.6	7.3	5.9	3.4
75	*****	10.1	9.8	9.5	9.3	9.0	8.7	8.4	8.1	7.8	7.5	7.1	5.7	3.3
80	*****	9.8	9.5	9.2	9.0	8.7	8.4	8.1	7.8	7.5	7.1	6.7	5.3	3.2
85	*****	9.5	9.2	9.0	8.7	8.4	8.1	7.8	7.5	7.1	6.7	6.3	5.0	3.1
90	*****	9.2	9.0	8.7	8.5	8.2	8.0	7.7	7.4	7.1	6.7	6.3	5.0	3.0
95	*****	9.0	8.7	8.5	8.2	8.0	7.7	7.4	7.1	6.7	6.3	5.9	4.7	2.9
100	*****	8.7	8.5	8.3	8.0	7.8	7.5	7.2	6.9	6.6	6.3	5.9	4.7	2.8
125	*****	7.6	7.4	7.2	6.9	6.7	6.4	6.1	5.8	5.5	5.2	4.9	3.9	2.5
150	*****	6.9	6.8	6.5	6.3	6.1	5.9	5.7	5.5	5.2	5.0	4.7	3.7	2.3
200	*****	6.0	5.8	5.7	5.5	5.3	5.1	4.9	4.7	4.5	4.3	4.0	3.1	2.0
250	*****	5.2	5.1	4.9	4.7	4.6	4.4	4.3	4.1	4.0	3.8	3.6	2.8	1.8
300	*****	4.8	4.6	4.5	4.3	4.2	4.0	3.9	3.7	3.6	3.4	3.2	2.5	1.6
350	*****	4.4	4.3	4.2	4.0	3.9	3.7	3.6	3.4	3.3	3.1	2.9	2.2	1.5
400	*****	4.0	3.9	3.8	3.6	3.5	3.4	3.3	3.1	3.0	2.8	2.6	2.0	1.4
450	*****	3.8	3.7	3.5	3.4	3.3	3.2	3.1	2.9	2.8	2.6	2.4	1.8	1.3
500	*****	3.5	3.4	3.2	3.1	3.0	2.8	2.7	2.5	2.4	2.2	2.0	1.5	1.2
750	*****	2.6	2.5	2.3	2.2	2.1	2.0	1.9	1.7	1.6	1.5	1.3	1.0	0.9
1000	*****	2.0	1.9	1.8	1.7	1.6	1.5	1.4	1.3	1.2	1.1	1.0	0.8	0.7
1500	*****	1.3	1.2	1.1	1.0	0.9	0.8	0.7	0.6	0.5	0.4	0.3	0.2	0.1
2000	*****	0.6	0.5	0.4	0.3	0.2	0.1	0.1	0.0	0.0	0.0	0.0	0.0	0.0

NOTE: FOR CORRECT USAGE OF THESE TABLES PLEASE REFER TO MICRODATA DOCUMENTATION

Canadian Community Health Survey (CCHS) – Healthy Aging – PUMF

Canadian Community Health Survey (CCHS) - Healthy Aging

Age group 75-84

NUMERATOR OF PERCENTAGE ('000)	ESTIMATED PERCENTAGE													
	0.1%	1.0%	2.0%	5.0%	10.0%	15.0%	20.0%	25.0%	30.0%	35.0%	40.0%	50.0%	70.0%	90.0%
1	80.2	79.8	79.4	78.2	76.1	73.9	71.7	69.4	67.1	64.7	62.1	56.7	43.9	25.4
2	*****	56.4	56.1	55.3	53.8	52.3	50.7	49.1	47.4	45.7	43.9	40.1	31.1	17.9
3	*****	46.1	45.8	45.1	43.9	42.7	41.4	40.1	38.7	37.3	35.9	32.7	25.4	14.6
4	*****	39.9	39.7	39.1	38.0	37.0	35.9	34.7	33.5	32.3	31.1	28.4	22.0	12.7
5	*****	35.7	35.5	35.0	34.0	33.1	32.1	31.1	30.0	28.9	27.8	25.4	19.6	11.3
6	*****	32.6	32.4	31.9	31.1	30.2	29.3	28.4	27.4	26.4	25.4	23.1	17.9	10.4
7	*****	30.2	30.0	29.5	28.8	27.9	27.1	26.2	25.4	24.4	23.5	21.4	16.6	9.6
8	*****	28.2	28.1	27.6	26.9	26.1	25.4	24.6	23.7	22.9	22.0	20.0	15.5	9.0
9	*****	26.6	26.5	26.1	25.4	24.6	23.9	23.1	22.4	21.6	20.7	18.9	14.6	8.5
10	*****	25.2	25.1	24.7	24.1	23.4	22.7	22.0	21.2	20.4	19.6	17.9	13.9	8.0
11	*****	24.1	23.9	23.6	22.9	22.3	21.6	20.9	20.2	19.5	18.7	17.1	13.2	7.6
12	*****	23.0	22.9	22.6	22.0	21.3	20.7	20.0	19.4	18.7	17.9	16.4	12.7	7.3
13	*****	22.1	22.0	21.7	21.1	20.5	19.9	19.3	18.6	17.9	17.2	15.7	12.2	7.0
14	*****	21.3	21.2	20.9	20.3	19.8	19.2	18.6	17.9	17.3	16.6	15.2	11.7	6.8
15	*****	20.5	20.2	19.6	19.1	18.5	17.9	17.3	16.7	16.0	15.4	14.6	11.3	6.5
16	*****	19.8	19.5	19.0	18.5	17.9	17.4	16.8	16.2	15.5	14.2	11.0	6.3	6.3
17	*****	19.3	19.0	18.5	17.9	17.4	16.8	16.3	15.7	15.1	13.8	10.7	6.2	6.2
18	*****	18.7	18.4	17.9	17.4	16.9	16.4	15.8	15.2	14.6	13.4	10.4	6.0	6.0
19	*****	18.2	17.9	17.5	17.0	16.5	15.9	15.4	14.8	14.3	13.0	10.1	5.8	5.8
20	*****	17.8	17.5	17.0	16.5	16.0	15.5	15.0	14.5	13.9	12.7	9.8	5.7	5.7
21	*****	17.3	17.1	16.6	16.1	15.7	15.2	14.6	14.1	13.6	12.4	9.6	5.5	5.5
22	*****	16.9	16.7	16.2	15.8	15.3	14.8	14.3	13.8	13.2	12.1	9.4	5.4	5.4
23	*****	16.6	16.3	15.9	15.4	15.0	14.5	14.0	13.5	13.0	11.8	9.2	5.3	5.3
24	*****	16.2	16.0	15.5	15.1	14.6	14.2	13.7	13.2	12.7	11.6	9.0	5.2	5.2
25	*****	15.9	15.6	15.2	14.8	14.3	13.9	13.4	12.9	12.4	11.3	8.8	5.1	5.1
30	*****	14.3	13.9	13.5	13.1	12.7	12.2	11.8	11.3	10.9	10.4	8.0	4.6	4.6
35	*****	13.2	12.9	12.5	12.1	11.7	11.3	10.9	10.5	10.1	9.6	7.4	4.3	4.3
40	*****	12.4	12.0	11.7	11.3	11.0	10.6	10.2	9.8	9.4	9.0	6.9	4.0	4.0
45	*****	11.7	11.3	11.0	10.7	10.4	10.0	9.6	9.3	8.9	8.5	6.5	3.8	3.8
50	*****	11.1	10.8	10.5	10.1	9.8	9.5	9.1	8.8	8.4	8.0	6.2	3.6	3.6
55	*****	10.5	10.3	10.0	9.7	9.4	9.0	8.7	8.4	8.0	7.6	5.9	3.4	3.4
60	*****	10.1	9.8	9.5	9.3	9.0	8.7	8.3	8.0	7.7	7.3	5.7	3.3	3.3
65	*****	9.7	9.4	9.2	8.9	8.6	8.3	8.0	7.7	7.4	7.0	5.4	3.1	3.1
70	*****	9.3	9.1	8.8	8.6	8.3	8.0	7.7	7.4	7.1	6.8	5.2	3.0	3.0
75	*****	8.8	8.5	8.3	8.0	7.7	7.5	7.2	6.9	6.6	6.3	4.9	2.8	2.8
80	*****	8.5	8.3	8.0	7.8	7.5	7.3	7.0	6.7	6.4	6.1	4.8	2.8	2.8
85	*****	8.3	8.0	7.8	7.5	7.3	7.0	6.7	6.4	6.1	5.8	4.5	2.6	2.6
90	*****	8.0	7.8	7.6	7.3	7.1	6.9	6.6	6.4	6.1	5.8	4.5	2.6	2.6
95	*****	7.8	7.6	7.4	7.1	6.9	6.6	6.4	6.1	5.8	5.5	4.2	2.5	2.5
100	*****	7.6	7.4	7.2	6.9	6.7	6.5	6.2	5.9	5.7	5.4	4.1	2.4	2.4
125	*****	6.8	6.6	6.4	6.2	6.0	5.8	5.6	5.4	5.1	4.9	3.6	2.1	2.1
150	*****	6.0	5.9	5.7	5.5	5.3	5.1	4.9	4.7	4.5	4.3	3.0	1.8	1.8
200	*****	5.2	5.1	4.9	4.7	4.5	4.3	4.1	3.9	3.7	3.5	2.2	1.4	1.4
250	*****	4.5	4.4	4.2	4.1	3.9	3.7	3.5	3.3	3.1	2.9	1.6	1.0	1.0
300	*****	4.0	3.9	3.7	3.6	3.4	3.2	3.0	2.8	2.6	2.4	1.1	0.7	0.7
350	*****	3.7	3.6	3.5	3.3	3.1	2.9	2.7	2.5	2.3	2.1	0.8	0.5	0.5
400	*****	3.4	3.2	3.1	2.9	2.7	2.5	2.3	2.1	1.9	1.7	0.6	0.4	0.4
450	*****	3.0	2.9	2.7	2.5	2.3	2.1	1.9	1.7	1.5	1.3	0.5	0.3	0.3
500	*****	2.9	2.8	2.5	2.3	2.1	1.9	1.7	1.5	1.3	1.1	0.4	0.3	0.3
750	*****	2.9	2.8	2.5	2.3	2.1	1.9	1.7	1.5	1.3	1.1	0.4	0.3	0.3
1000	*****	2.9	2.8	2.5	2.3	2.1	1.9	1.7	1.5	1.3	1.1	0.4	0.3	0.3

NOTE: FOR CORRECT USAGE OF THESE TABLES PLEASE REFER TO MICRODATA DOCUMENTATION

Canadian Community Health Survey (CCHS) – Healthy Aging – PUMF

Canadian Community Health Survey (CCHS) - Healthy Aging

Age group 85+

NUMERATOR OF PERCENTAGE ('000)	ESTIMATED PERCENTAGE													
	0.1%	1.0%	2.0%	5.0%	10.0%	15.0%	20.0%	25.0%	30.0%	35.0%	40.0%	50.0%	70.0%	90.0%
1	*****	65.9	65.5	64.5	62.8	61.0	59.2	57.3	55.4	53.4	51.3	46.8	36.3	20.9
2	*****	46.6	46.3	45.6	44.4	43.2	41.9	40.5	39.2	37.7	36.3	33.1	25.6	14.8
3	*****	38.0	37.8	37.2	36.3	35.2	34.2	33.1	32.0	30.8	29.6	27.0	20.9	12.1
4	*****	32.9	32.8	32.3	31.4	30.5	29.6	28.7	27.7	26.7	25.6	23.4	18.1	10.5
5	*****	*****	29.3	28.9	28.1	27.3	26.5	25.6	24.8	23.9	22.9	20.9	16.2	9.4
6	*****	*****	26.8	26.3	25.6	24.9	24.2	23.4	22.6	21.8	20.9	19.1	14.8	8.5
7	*****	*****	24.8	24.4	23.7	23.1	22.4	21.7	20.9	20.2	19.4	17.7	13.7	7.9
8	*****	*****	23.2	22.8	22.2	21.6	20.9	20.3	19.6	18.9	18.1	16.5	12.8	7.4
9	*****	*****	21.8	21.5	20.9	20.3	19.7	19.1	18.5	17.8	17.1	15.6	12.1	7.0
10	*****	*****	*****	20.4	19.9	19.3	18.7	18.1	17.5	16.9	16.2	14.8	11.5	6.6
11	*****	*****	*****	19.5	18.9	18.4	17.8	17.3	16.7	16.1	15.5	14.1	10.9	6.3
12	*****	*****	*****	18.6	18.1	17.6	17.1	16.5	16.0	15.4	14.8	13.5	10.5	6.0
13	*****	*****	*****	17.9	17.4	16.9	16.4	15.9	15.4	14.8	14.2	13.0	10.1	5.8
14	*****	*****	*****	17.2	16.8	16.3	15.8	15.3	14.8	14.3	13.7	12.5	9.7	5.6
15	*****	*****	*****	16.7	16.2	15.8	15.3	14.8	14.3	13.8	13.2	12.1	9.4	5.4
16	*****	*****	*****	16.1	15.7	15.3	14.8	14.3	13.8	13.3	12.8	11.7	9.1	5.2
17	*****	*****	*****	15.6	15.2	14.8	14.4	13.9	13.4	12.9	12.4	11.4	8.8	5.1
18	*****	*****	*****	15.2	14.8	14.4	14.0	13.5	13.1	12.6	12.1	11.0	8.5	4.9
19	*****	*****	*****	14.8	14.4	14.0	13.6	13.2	12.7	12.2	11.8	10.7	8.3	4.8
20	*****	*****	*****	14.4	14.0	13.6	13.2	12.8	12.4	11.9	11.5	10.5	8.1	4.7
21	*****	*****	*****	14.1	13.7	13.3	12.9	12.5	12.1	11.6	11.2	10.2	7.9	4.6
22	*****	*****	*****	13.8	13.4	13.0	12.6	12.2	11.8	11.4	10.9	10.0	7.7	4.5
23	*****	*****	*****	13.5	13.1	12.7	12.3	12.0	11.5	11.1	10.7	9.8	7.6	4.4
24	*****	*****	*****	13.2	12.8	12.5	12.1	11.7	11.3	10.9	10.5	9.6	7.4	4.3
25	*****	*****	*****	12.6	12.2	11.8	11.5	11.1	10.7	10.3	9.4	7.3	4.2	4.2
30	*****	*****	*****	11.5	11.1	10.8	10.5	10.1	9.7	9.4	8.5	6.6	3.8	3.8
35	*****	*****	*****	10.6	10.3	10.0	9.7	9.4	9.0	8.7	7.9	6.1	3.5	3.5
40	*****	*****	*****	9.9	9.6	9.4	9.1	8.8	8.4	8.1	7.4	5.7	3.3	3.3
45	*****	*****	*****	9.4	9.1	8.8	8.5	8.3	8.0	7.6	7.0	5.4	3.1	3.1
50	*****	*****	*****	8.6	8.4	8.1	7.8	7.5	7.3	7.0	6.6	5.1	3.0	3.0
55	*****	*****	*****	8.2	8.0	7.7	7.5	7.2	6.9	6.6	6.3	4.9	2.8	2.8
60	*****	*****	*****	7.9	7.6	7.4	7.1	6.9	6.6	6.3	6.0	4.7	2.7	2.7
65	*****	*****	*****	7.6	7.3	7.1	6.9	6.6	6.4	6.1	5.8	4.5	2.6	2.6
70	*****	*****	*****	7.3	7.1	6.9	6.6	6.4	6.1	5.8	5.5	4.3	2.5	2.5
75	*****	*****	*****	6.8	6.6	6.4	6.2	6.0	5.7	5.5	5.2	4.1	2.3	2.3
80	*****	*****	*****	6.6	6.4	6.2	6.0	5.8	5.6	5.4	5.1	3.9	2.3	2.3
85	*****	*****	*****	6.4	6.2	6.0	5.8	5.6	5.4	5.2	4.9	3.8	2.2	2.2
90	*****	*****	*****	6.2	6.0	5.8	5.6	5.4	5.2	4.9	4.7	3.6	2.1	2.1
95	*****	*****	*****	6.1	5.9	5.7	5.5	5.3	5.1	4.9	4.7	3.6	2.1	2.1
100	*****	*****	*****	5.7	5.5	5.3	5.1	4.9	4.7	4.5	4.3	3.2	1.9	1.9
125	*****	*****	*****	5.0	4.8	4.6	4.4	4.2	4.0	3.8	3.6	2.6	1.5	1.5
150	*****	*****	*****	4.4	4.2	4.0	3.8	3.6	3.4	3.2	3.0	2.1	1.1	1.1
200	*****	*****	*****	3.3	3.1	2.9	2.7	2.5	2.3	2.1	1.9	1.4	0.8	0.8
250	*****	*****	*****	2.3	2.1	1.9	1.7	1.5	1.3	1.1	0.9	0.7	0.4	0.4
300	*****	*****	*****	2.1	1.9	1.7	1.5	1.3	1.1	0.9	0.7	0.5	0.3	0.3
350	*****	*****	*****	1.1	1.0	0.9	0.8	0.7	0.6	0.5	0.4	0.3	0.2	0.2
400	*****	*****	*****	1.0	0.9	0.8	0.7	0.6	0.5	0.4	0.3	0.2	0.1	0.1

NOTE: FOR CORRECT USAGE OF THESE TABLES PLEASE REFER TO MICRODATA DOCUMENTATION

Canadian Community Health Survey (CCHS) – Healthy Aging – PUMF

Canadian Community Health Survey (CCHS) - Healthy Aging
Provinces

Newfoundland and Labrador

NUMERATOR OF PERCENTAGE ('000)	ESTIMATED PERCENTAGE													
	0.1%	1.0%	2.0%	5.0%	10.0%	15.0%	20.0%	25.0%	30.0%	35.0%	40.0%	50.0%	70.0%	90.0%
1	*****	48.6	48.3	47.6	46.3	45.0	43.7	42.3	40.8	39.4	37.8	34.5	26.7	15.4
2	*****	34.4	34.2	33.7	32.8	31.8	30.9	29.9	28.9	27.8	26.7	24.4	18.9	10.9
3	*****		27.9	27.5	26.7	26.0	25.2	24.4	23.6	22.7	21.8	19.9	15.4	8.9
4	*****		24.2	23.8	23.2	22.5	21.8	21.1	20.4	19.7	18.9	17.3	13.4	7.7
5	*****			21.3	20.7	20.1	19.5	18.9	18.3	17.6	16.9	15.4	12.0	6.9
6	*****			19.4	18.9	18.4	17.8	17.3	16.7	16.1	15.4	14.1	10.9	6.3
7	*****			18.0	17.5	17.0	16.5	16.0	15.4	14.9	14.3	13.0	10.1	5.8
8	*****			16.8	16.4	15.9	15.4	14.9	14.4	13.9	13.4	12.2	9.5	5.5
9	*****			15.9	15.4	15.0	14.6	14.1	13.6	13.1	12.6	11.5	8.9	5.1
10	*****			15.0	14.6	14.2	13.8	13.4	12.9	12.4	12.0	10.9	8.5	4.9
11	*****			14.3	14.0	13.6	13.2	12.7	12.3	11.9	11.4	10.4	8.1	4.7
12	*****				13.4	13.0	12.6	12.2	11.8	11.4	10.9	10.0	7.7	4.5
13	*****				12.8	12.5	12.1	11.7	11.3	10.9	10.5	9.6	7.4	4.3
14	*****				12.4	12.0	11.7	11.3	10.9	10.5	10.1	9.2	7.1	4.1
15	*****				12.0	11.6	11.3	10.9	10.5	10.2	9.8	8.9	6.9	4.0
16	*****				11.6	11.3	10.9	10.6	10.2	9.8	9.5	8.6	6.7	3.9
17	*****				11.2	10.9	10.6	10.3	9.9	9.5	9.2	8.4	6.5	3.7
18	*****				10.9	10.6	10.3	10.0	9.6	9.3	8.9	8.1	6.3	3.6
19	*****				10.6	10.3	10.0	9.7	9.4	9.0	8.7	7.9	6.1	3.5
20	*****				10.4	10.1	9.8	9.5	9.1	8.8	8.5	7.7	6.0	3.5
21	*****				10.1	9.8	9.5	9.2	8.9	8.6	8.3	7.5	5.8	3.4
22	*****				9.9	9.6	9.3	9.0	8.7	8.4	8.1	7.4	5.7	3.3
23	*****				9.7	9.4	9.1	8.8	8.5	8.2	7.9	7.2	5.6	3.2
24	*****				9.2	8.9	8.6	8.3	8.0	7.7	7.4	7.0	5.5	3.2
25	*****				9.0	8.7	8.5	8.2	7.9	7.6	7.3	6.9	5.3	3.1
30	*****				8.2	8.0	7.7	7.5	7.2	6.9	6.6	6.3	4.9	2.8
35	*****				7.4	7.1	6.9	6.7	6.4	6.1	5.8	5.5	4.5	2.6
40	*****				6.9	6.7	6.5	6.2	6.0	5.7	5.4	5.1	4.2	2.4
45	*****				6.5	6.3	6.1	5.9	5.6	5.4	5.1	4.9	4.0	2.3
50	*****				6.0	5.8	5.6	5.3	5.1	4.9	4.7	4.4	3.8	2.2
55	*****				5.7	5.5	5.3	5.1	4.9	4.7	4.5	4.2	3.6	2.1
60	*****				5.3	5.1	4.9	4.7	4.5	4.3	4.1	3.9	3.5	2.0
65	*****				5.1	4.9	4.7	4.5	4.3	4.1	3.9	3.7	3.3	1.9
70	*****				4.7	4.5	4.3	4.1	3.9	3.7	3.5	3.3	3.0	1.8
75	*****				4.5	4.4	4.3	4.1	3.9	3.7	3.5	3.3	3.0	1.8
80	*****				4.4	4.2	4.1	3.9	3.7	3.5	3.3	3.1	2.9	1.7
85	*****				4.1	3.9	3.7	3.5	3.3	3.1	2.9	2.7	2.5	1.7
90	*****				4.0	3.8	3.6	3.4	3.2	3.0	2.8	2.6	2.4	1.6
95	*****				3.5	3.3	3.1	2.9	2.7	2.5	2.3	2.1	1.9	1.6
100	*****				3.5	3.3	3.1	2.9	2.7	2.5	2.3	2.1	1.9	1.5
125	*****				2.4	2.3	2.2	2.1	2.0	1.9	1.8	1.7	1.6	1.4
150	*****				2.2	2.1	2.0	1.9	1.8	1.7	1.6	1.5	1.4	1.3
200	*****				1.1	1.0	0.9	0.8	0.7	0.6	0.5	0.4	0.3	0.2

NOTE: FOR CORRECT USAGE OF THESE TABLES PLEASE REFER TO MICRODATA DOCUMENTATION

Canadian Community Health Survey (CCHS) – Healthy Aging – PUMF

Canadian Community Health Survey (CCHS) - Healthy Aging

Prince Edward Island

NUMERATOR OF PERCENTAGE ('000)	ESTIMATED PERCENTAGE													
	0.1%	1.0%	2.0%	5.0%	10.0%	15.0%	20.0%	25.0%	30.0%	35.0%	40.0%	50.0%	70.0%	90.0%
1	*****		25.5	25.1	24.5	23.8	23.1	22.3	21.6	20.8	20.0	18.2	14.1	8.2
2	*****		17.8	17.3	16.8	16.3	15.8	15.3	14.7	14.1	12.9	10.0	5.8	
3	*****		14.5	14.1	13.7	13.3	12.9	12.5	12.0	11.5	10.5	8.2	4.7	
4	*****			12.2	11.9	11.5	11.2	10.8	10.4	10.0	9.1	7.1	4.1	
5	*****			10.9	10.6	10.3	10.0	9.6	9.3	8.9	8.2	6.3	3.6	
6	*****			10.0	9.7	9.4	9.1	8.8	8.5	8.2	7.4	5.8	3.3	
7	*****				9.0	8.7	8.4	8.2	7.9	7.5	6.9	5.3	3.1	
8	*****				8.4	8.2	7.9	7.6	7.3	7.1	6.4	5.0	2.9	
9	*****				7.9	7.7	7.4	7.2	6.9	6.7	6.1	4.7	2.7	
10	*****					7.3	7.1	6.8	6.6	6.3	5.8	4.5	2.6	
11	*****					7.0	6.7	6.5	6.3	6.0	5.5	4.3	2.5	
12	*****						6.7	6.4	6.2	6.0	5.8	5.3	4.1	2.4
13	*****							6.2	6.0	5.8	5.5	5.1	3.9	2.3
14	*****							6.0	5.8	5.6	5.3	4.9	3.8	2.2
15	*****								5.8	5.6	5.4	5.2	4.7	3.6
16	*****									5.4	5.2	5.0	4.6	3.5
17	*****									5.2	5.0	4.8	4.4	3.4
18	*****									5.1	4.9	4.7	4.3	3.3
19	*****										4.8	4.6	4.2	3.2
20	*****										4.6	4.5	4.1	3.2
21	*****										4.5	4.4	4.0	3.1
22	*****											4.3	3.9	3.0
23	*****											4.2	3.8	2.9
24	*****											4.1	3.7	2.9
25	*****												3.6	2.8
30	*****												3.3	2.6
35	*****													2.4
40	*****													2.2
45	*****													1.2
50	*****													1.2
55	*****													1.1

NOTE: FOR CORRECT USAGE OF THESE TABLES PLEASE REFER TO MICRODATA DOCUMENTATION

Canadian Community Health Survey (CCHS) – Healthy Aging – PUMF

Canadian Community Health Survey (CCHS) - Healthy Aging

Nova Scotia

NUMERATOR OF PERCENTAGE ('000)	ESTIMATED PERCENTAGE													
	0.1%	1.0%	2.0%	5.0%	10.0%	15.0%	20.0%	25.0%	30.0%	35.0%	40.0%	50.0%	70.0%	90.0%
1	*****	59.3	59.0	58.1	56.5	54.9	53.3	51.6	49.9	48.0	46.2	42.1	32.6	18.8
2	*****	41.9	41.7	41.1	40.0	38.8	37.7	36.5	35.3	34.0	32.6	29.8	23.1	13.3
3	*****	34.2	34.1	33.5	32.6	31.7	30.8	29.8	28.8	27.7	26.6	24.3	18.8	10.9
4	*****	29.6	29.5	29.0	28.3	27.5	26.6	25.8	24.9	24.0	23.1	21.1	16.3	9.4
5	*****	*****	26.4	26.0	25.3	24.6	23.8	23.1	22.3	21.5	20.6	18.8	14.6	8.4
6	*****	*****	24.1	23.7	23.1	22.4	21.8	21.1	20.4	19.6	18.8	17.2	13.3	7.7
7	*****	*****	22.3	22.0	21.4	20.8	20.1	19.5	18.8	18.2	17.4	15.9	12.3	7.1
8	*****	*****	20.9	20.5	20.0	19.4	18.8	18.2	17.6	17.0	16.3	14.9	11.5	6.7
9	*****	*****	19.4	18.8	18.3	17.8	17.2	16.6	16.0	15.4	14.0	10.9	6.3	6.0
10	*****	*****	18.4	17.9	17.4	16.9	16.3	15.8	15.2	14.6	13.3	10.3	6.0	5.7
11	*****	*****	17.5	17.0	16.6	16.1	15.6	15.0	14.5	13.9	12.7	9.8	5.7	5.4
12	*****	*****	16.8	16.3	15.9	15.4	14.9	14.4	13.9	13.3	12.2	9.4	5.4	5.2
13	*****	*****	16.1	15.7	15.2	14.8	14.3	13.8	13.3	12.8	11.7	9.1	5.2	5.0
14	*****	*****	15.5	15.1	14.7	14.2	13.8	13.3	12.8	12.3	11.3	8.7	5.0	4.9
15	*****	*****	15.0	14.6	14.2	13.8	13.3	12.9	12.4	11.9	10.9	8.4	4.9	4.7
16	*****	*****	14.5	14.1	13.7	13.3	12.9	12.5	12.0	11.5	10.5	8.2	4.7	4.6
17	*****	*****	14.1	13.7	13.3	12.9	12.5	12.1	11.7	11.2	10.2	7.9	4.6	4.4
18	*****	*****	13.7	13.3	12.9	12.6	12.2	11.8	11.3	10.9	9.9	7.7	4.4	4.3
19	*****	*****	13.3	13.0	12.6	12.2	11.8	11.4	11.0	10.6	9.7	7.5	4.3	4.2
20	*****	*****	13.0	12.6	12.3	11.9	11.5	11.1	10.7	10.3	9.4	7.3	4.2	4.1
21	*****	*****	*****	12.3	12.0	11.6	11.3	10.9	10.5	10.1	9.2	7.1	4.1	4.0
22	*****	*****	*****	12.1	11.7	11.4	11.0	10.6	10.2	9.8	9.0	7.0	4.0	3.9
23	*****	*****	*****	11.8	11.5	11.1	10.8	10.4	10.0	9.6	8.8	6.8	3.9	3.8
24	*****	*****	*****	11.5	11.2	10.9	10.5	10.2	9.8	9.4	8.6	6.7	3.8	3.8
25	*****	*****	*****	11.3	11.0	10.7	10.3	10.0	9.6	9.2	8.4	6.5	3.8	3.4
30	*****	*****	*****	10.3	10.0	9.7	9.4	9.1	8.8	8.4	7.7	6.0	3.4	3.2
35	*****	*****	*****	9.6	9.3	9.0	8.7	8.4	8.1	7.8	7.1	5.5	3.2	3.0
40	*****	*****	*****	8.9	8.7	8.4	8.2	7.9	7.6	7.3	6.7	5.2	3.0	2.8
45	*****	*****	*****	8.2	7.9	7.7	7.4	7.2	6.9	6.6	6.3	4.9	2.8	2.7
50	*****	*****	*****	7.8	7.5	7.3	7.1	6.8	6.5	6.2	6.0	4.6	2.7	2.5
55	*****	*****	*****	7.4	7.2	7.0	6.7	6.5	6.2	5.9	5.7	4.4	2.5	2.4
60	*****	*****	*****	7.1	6.9	6.7	6.4	6.2	6.0	5.8	5.4	4.2	2.4	2.3
65	*****	*****	*****	6.6	6.4	6.2	6.0	5.7	5.5	5.3	5.0	4.0	2.3	2.2
70	*****	*****	*****	6.4	6.2	6.0	5.7	5.5	5.3	5.0	4.7	3.9	2.3	2.2
75	*****	*****	*****	6.2	6.0	5.8	5.5	5.3	5.0	4.7	4.4	3.8	2.2	2.1
80	*****	*****	*****	6.0	5.8	5.6	5.4	5.2	5.0	4.7	4.4	3.6	2.1	2.0
85	*****	*****	*****	5.6	5.4	5.2	5.0	4.7	4.5	4.3	4.0	3.5	2.0	1.9
90	*****	*****	*****	5.4	5.3	5.1	4.9	4.7	4.5	4.3	4.0	3.4	1.9	1.9
95	*****	*****	*****	5.3	5.1	4.9	4.7	4.5	4.3	4.1	3.8	3.3	1.9	1.7
100	*****	*****	*****	5.2	5.0	4.8	4.6	4.4	4.2	4.0	3.7	3.3	1.9	1.5
125	*****	*****	*****	4.5	4.3	4.1	3.9	3.7	3.5	3.3	3.0	2.7	1.5	1.3
150	*****	*****	*****	3.8	3.6	3.4	3.2	3.0	2.8	2.6	2.4	2.1	1.3	1.2
200	*****	*****	*****	3.0	2.8	2.6	2.4	2.2	2.0	1.8	1.6	1.4	1.2	1.1
250	*****	*****	*****	2.1	1.9	1.7	1.5	1.3	1.1	0.9	0.8	0.7	1.1	1.0
300	*****	*****	*****	1.1	1.0	0.9	0.8	0.7	0.6	0.5	0.4	0.3	1.1	1.0
350	*****	*****	*****	1.0	0.9	0.8	0.7	0.6	0.5	0.4	0.3	0.2	1.0	0.9

NOTE: FOR CORRECT USAGE OF THESE TABLES PLEASE REFER TO MICRODATA DOCUMENTATION

Canadian Community Health Survey (CCHS) – Healthy Aging – PUMF

Canadian Community Health Survey (CCHS) - Healthy Aging

New Brunswick

NUMERATOR OF PERCENTAGE ('000)	ESTIMATED PERCENTAGE													
	0.1%	1.0%	2.0%	5.0%	10.0%	15.0%	20.0%	25.0%	30.0%	35.0%	40.0%	50.0%	70.0%	90.0%
1	*****	56.4	56.1	55.2	53.8	52.2	50.7	49.1	47.4	45.7	43.9	40.1	31.0	17.9
2	*****	39.9	39.7	39.1	38.0	36.9	35.8	34.7	33.5	32.3	31.0	28.3	21.9	12.7
3	*****	32.6	32.4	31.9	31.0	30.2	29.3	28.3	27.4	26.4	25.3	23.1	17.9	10.3
4	*****	*****	28.0	27.6	26.9	26.1	25.3	24.5	23.7	22.8	21.9	20.0	15.5	9.0
5	*****	*****	25.1	24.7	24.0	23.4	22.7	21.9	21.2	20.4	19.6	17.9	13.9	8.0
6	*****	*****	22.9	22.5	21.9	21.3	20.7	20.0	19.4	18.7	17.9	16.4	12.7	7.3
7	*****	*****	*****	20.9	20.3	19.7	19.2	18.5	17.9	17.3	16.6	15.1	11.7	6.8
8	*****	*****	*****	19.5	19.0	18.5	17.9	17.4	16.8	16.2	15.5	14.2	11.0	6.3
9	*****	*****	*****	18.4	17.9	17.4	16.9	16.4	15.8	15.2	14.6	13.4	10.3	6.0
10	*****	*****	*****	17.5	17.0	16.5	16.0	15.5	15.0	14.4	13.9	12.7	9.8	5.7
11	*****	*****	*****	16.7	16.2	15.8	15.3	14.8	14.3	13.8	13.2	12.1	9.4	5.4
12	*****	*****	*****	15.9	15.5	15.1	14.6	14.2	13.7	13.2	12.7	11.6	9.0	5.2
13	*****	*****	*****	15.3	14.9	14.5	14.1	13.6	13.1	12.7	12.2	11.1	8.6	5.0
14	*****	*****	*****	14.8	14.4	14.0	13.5	13.1	12.7	12.2	11.7	10.7	8.3	4.8
15	*****	*****	*****	14.3	13.9	13.5	13.1	12.7	12.2	11.8	11.3	10.3	8.0	4.6
16	*****	*****	*****	13.8	13.4	13.1	12.7	12.3	11.9	11.4	11.0	10.0	7.8	4.5
17	*****	*****	*****	13.0	12.7	12.3	11.9	11.5	11.1	10.6	9.7	7.5	4.3	4.3
18	*****	*****	*****	12.7	12.3	11.9	11.6	11.2	10.8	10.3	9.4	7.3	4.2	4.2
19	*****	*****	*****	12.3	12.0	11.6	11.3	10.9	10.5	10.1	9.2	7.1	4.1	4.1
20	*****	*****	*****	12.0	11.7	11.3	11.0	10.6	10.2	9.8	9.0	6.9	4.0	4.0
21	*****	*****	*****	11.7	11.4	11.1	10.7	10.3	10.0	9.6	8.7	6.8	3.9	3.9
22	*****	*****	*****	11.5	11.1	10.8	10.5	10.1	9.7	9.4	8.5	6.6	3.8	3.8
23	*****	*****	*****	11.2	10.9	10.6	10.2	9.9	9.5	9.2	8.4	6.5	3.7	3.7
24	*****	*****	*****	11.0	10.7	10.3	10.0	9.7	9.3	9.0	8.2	6.3	3.7	3.7
25	*****	*****	*****	10.8	10.4	10.1	9.8	9.5	9.1	8.8	8.0	6.2	3.6	3.6
30	*****	*****	*****	9.8	9.5	9.3	9.0	8.7	8.3	8.0	7.3	5.7	3.3	3.3
35	*****	*****	*****	8.8	8.6	8.3	8.0	7.7	7.4	7.4	6.8	5.2	3.0	3.0
40	*****	*****	*****	8.3	8.0	7.8	7.5	7.2	6.9	6.9	6.3	4.9	2.8	2.8
45	*****	*****	*****	7.8	7.6	7.3	7.1	6.8	6.5	6.5	6.0	4.6	2.7	2.7
50	*****	*****	*****	7.4	7.2	6.9	6.7	6.5	6.2	6.2	5.7	4.4	2.5	2.5
55	*****	*****	*****	6.8	6.6	6.4	6.2	5.9	5.7	5.7	5.4	4.2	2.4	2.4
60	*****	*****	*****	6.5	6.3	6.1	5.9	5.7	5.5	5.5	5.2	4.0	2.3	2.3
65	*****	*****	*****	6.3	6.1	5.9	5.7	5.5	5.4	5.4	5.0	3.8	2.2	2.2
70	*****	*****	*****	5.9	5.7	5.5	5.3	5.1	4.9	4.9	4.6	3.4	2.1	2.1
75	*****	*****	*****	5.7	5.5	5.3	5.1	4.9	4.7	4.7	4.4	3.2	2.1	2.1
80	*****	*****	*****	5.5	5.3	5.1	4.9	4.7	4.5	4.5	4.2	3.0	2.0	2.0
85	*****	*****	*****	5.1	5.0	4.8	4.6	4.4	4.3	4.3	4.0	2.8	1.9	1.9
90	*****	*****	*****	5.0	4.8	4.6	4.4	4.2	4.1	4.1	3.8	2.6	1.8	1.8
95	*****	*****	*****	4.9	4.7	4.5	4.3	4.1	4.0	4.0	3.7	2.5	1.7	1.7
100	*****	*****	*****	4.7	4.6	4.4	4.2	4.0	3.9	3.9	3.6	2.4	1.6	1.6
125	*****	*****	*****	3.9	3.8	3.6	3.4	3.2	3.1	3.1	2.8	1.9	1.3	1.3
150	*****	*****	*****	3.3	3.2	3.0	2.8	2.6	2.5	2.5	2.2	1.5	1.0	1.0
200	*****	*****	*****	2.2	2.1	2.0	1.9	1.8	1.7	1.7	1.5	1.0	0.7	0.7
250	*****	*****	*****	1.1	1.1	1.0	0.9	0.8	0.8	0.8	0.7	0.5	0.3	0.3
300	*****	*****	*****	1.1	1.1	1.0	0.9	0.8	0.8	0.8	0.7	0.5	0.3	0.3

NOTE: FOR CORRECT USAGE OF THESE TABLES PLEASE REFER TO MICRODATA DOCUMENTATION

Canadian Community Health Survey (CCHS) – Healthy Aging – PUMF

Canadian Community Health Survey (CCHS) - Healthy Aging

Quebec

NUMERATOR OF PERCENTAGE ('000)	ESTIMATED PERCENTAGE														
	0.1%	1.0%	2.0%	5.0%	10.0%	15.0%	20.0%	25.0%	30.0%	35.0%	40.0%	50.0%	70.0%	90.0%	
1	120.8	120.3	119.6	117.8	114.7	111.4	108.1	104.7	101.1	97.4	93.6	85.5	66.2	38.2	
2	85.4	85.0	84.6	83.3	81.1	78.8	76.4	74.0	71.5	68.9	66.2	60.4	46.8	27.0	
3	69.7	69.4	69.1	68.0	66.2	64.3	62.4	60.4	58.4	56.3	54.1	49.3	38.2	22.1	
4	*****	60.1	59.8	58.9	57.3	55.7	54.1	52.3	50.6	48.7	46.8	42.7	33.1	19.1	
5	*****	53.8	53.5	52.7	51.3	49.8	48.3	46.8	45.2	43.6	41.9	38.2	29.6	17.1	
6	*****	49.1	48.8	48.1	46.8	45.5	44.1	42.7	41.3	39.8	38.2	34.9	27.0	15.6	
7	*****	45.5	45.2	44.5	43.3	42.1	40.9	39.6	38.2	36.8	35.4	32.3	25.0	14.4	
8	*****	42.5	42.3	41.6	40.5	39.4	38.2	37.0	35.8	34.5	33.1	30.2	23.4	13.5	
9	*****	40.1	39.9	39.3	38.2	37.1	36.0	34.9	33.7	32.5	31.2	28.5	22.1	12.7	
10	*****	38.0	37.8	37.3	36.3	35.2	34.2	33.1	32.0	30.8	29.6	27.0	20.9	12.1	
11	*****	36.3	36.1	35.5	34.6	33.6	32.6	31.6	30.5	29.4	28.2	25.8	20.0	11.5	
12	*****	34.7	34.5	34.0	33.1	32.2	31.2	30.2	29.2	28.1	27.0	24.7	19.1	11.0	
13	*****	33.4	33.2	32.7	31.8	30.9	30.0	29.0	28.0	27.0	26.0	23.7	18.4	10.6	
14	*****	32.1	32.0	31.5	30.6	29.8	28.9	28.0	27.0	26.0	25.0	22.8	17.7	10.2	
15	*****	31.0	30.9	30.4	29.6	28.8	27.9	27.0	26.1	25.2	24.2	22.1	17.1	9.9	
16	*****	30.1	29.9	29.5	28.7	27.9	27.0	26.2	25.3	24.4	23.4	21.4	16.5	9.6	
17	*****	29.2	29.0	28.6	27.8	27.0	26.2	25.4	24.5	23.6	22.7	20.7	16.1	9.3	
18	*****	28.3	28.2	27.8	27.0	26.3	25.5	24.7	23.8	23.0	22.1	20.1	15.6	9.0	
19	*****	27.6	27.4	27.0	26.3	25.6	24.8	24.0	23.2	22.4	21.5	19.6	15.2	8.8	
20	*****	26.9	26.8	26.3	25.6	24.9	24.2	23.4	22.6	21.8	20.9	19.1	14.8	8.5	
21	*****	26.2	26.1	25.7	25.0	24.3	23.6	22.8	22.1	21.3	20.4	18.6	14.4	8.3	
22	*****	25.6	25.5	25.1	24.4	23.8	23.0	22.3	21.6	20.8	20.0	18.2	14.1	8.1	
23	*****	25.1	24.9	24.6	23.9	23.2	22.5	21.8	21.1	20.3	19.5	17.8	13.8	8.0	
24	*****	24.5	24.4	24.0	23.4	22.7	22.1	21.4	20.6	19.9	19.1	17.4	13.5	7.8	
25	*****	24.1	23.9	23.6	22.9	22.3	21.6	20.9	20.2	19.5	18.7	17.1	13.2	7.6	
30	*****	22.0	21.8	21.5	20.9	20.3	19.7	19.1	18.5	17.8	17.1	15.6	12.1	7.0	
35	*****	20.2	19.9	19.4	18.8	18.3	17.7	17.1	16.5	15.8	15.1	13.5	10.5	6.5	
40	*****	18.9	18.6	18.1	17.6	17.1	16.5	16.0	15.4	14.8	14.2	12.6	10.0	6.0	
45	*****	17.8	17.6	17.1	16.6	16.1	15.6	15.1	14.5	14.0	13.4	11.8	9.4	5.7	
50	*****	16.9	16.7	16.2	15.8	15.3	14.8	14.3	13.8	13.2	12.6	11.0	8.5	5.4	
55	*****	16.1	15.9	15.5	15.0	14.6	14.1	13.6	13.1	12.6	12.1	10.5	8.0	5.2	
60	*****	15.4	15.2	14.8	14.4	14.0	13.5	13.1	12.6	12.1	11.6	10.0	7.5	4.9	
65	*****	14.8	14.6	14.2	13.8	13.4	13.0	12.5	12.1	11.6	11.2	9.6	7.0	4.7	
70	*****	14.1	13.7	13.3	12.9	12.5	12.1	11.7	11.3	10.8	10.4	8.8	6.2	4.6	
75	*****	13.6	13.2	12.9	12.5	12.1	11.7	11.3	10.9	10.5	10.1	8.5	5.9	4.4	
80	*****	13.2	12.8	12.5	12.1	11.7	11.3	10.9	10.5	10.1	9.7	8.1	5.5	4.3	
85	*****	12.8	12.4	12.1	11.7	11.4	11.0	10.6	10.2	9.8	9.4	7.8	5.2	4.1	
90	*****	12.4	12.1	11.7	11.4	11.0	10.7	10.3	9.9	9.5	9.1	7.5	4.9	4.0	
95	*****	12.1	11.8	11.4	11.1	10.7	10.4	10.0	9.6	9.2	8.8	7.2	4.6	3.9	
100	*****	11.8	11.5	11.1	10.8	10.5	10.1	9.7	9.4	9.0	8.6	7.0	4.4	3.8	
125	*****	10.5	10.3	10.0	9.7	9.4	9.0	8.7	8.4	8.1	7.7	6.1	4.1	3.4	
150	*****	9.6	9.4	9.1	8.8	8.5	8.3	8.0	7.6	7.3	7.0	5.4	3.4	3.1	
200	*****	8.1	7.9	7.6	7.4	7.2	6.9	6.6	6.3	6.0	5.7	4.1	2.4	2.7	
250	*****	7.3	7.0	6.8	6.6	6.4	6.2	5.9	5.6	5.4	5.1	3.5	2.0	2.4	
300	*****	6.6	6.4	6.2	6.0	5.8	5.6	5.4	5.2	5.0	4.8	3.2	1.7	2.2	
350	*****	6.0	5.8	5.6	5.4	5.2	5.0	4.8	4.6	4.4	4.2	2.6	1.1	2.0	
400	*****	5.6	5.4	5.2	5.0	4.8	4.6	4.4	4.2	4.0	3.8	2.2	0.7	1.9	
450	*****	5.3	5.1	4.9	4.7	4.5	4.3	4.1	3.9	3.7	3.5	1.9	0.4	1.8	
500	*****	5.0	4.8	4.7	4.5	4.3	4.1	3.9	3.7	3.5	3.3	1.7	0.3	1.7	
750	*****	3.8	3.7	3.6	3.4	3.3	3.1	3.0	2.8	2.7	2.5	0.9	0.2	1.4	
1000	*****	3.2	3.1	3.0	2.8	2.7	2.5	2.4	2.2	2.1	1.9	0.7	0.1	1.2	
1500	*****	2.2	2.1	2.0	1.8	1.7	1.6	1.4	1.3	1.2	1.1	0.5	0.0	1.0	
2000	*****	1.5	1.4	1.3	1.2	1.1	1.0	0.9	0.8	0.7	0.6	0.3	0.0	0.9	
3000	*****	0.7	0.6	0.5	0.4	0.3	0.3	0.2	0.2	0.1	0.1	0.0	0.0	0.7	

NOTE: FOR CORRECT USAGE OF THESE TABLES PLEASE REFER TO MICRODATA DOCUMENTATION

Canadian Community Health Survey (CCHS) – Healthy Aging – PUMF

Canadian Community Health Survey (CCHS) - Healthy Aging

Ontario

NUMERATOR OF PERCENTAGE ('000)	ESTIMATED PERCENTAGE													
	0.1%	1.0%	2.0%	5.0%	10.0%	15.0%	20.0%	25.0%	30.0%	35.0%	40.0%	50.0%	70.0%	90.0%
1	140.3	139.6	138.9	136.8	133.1	129.4	125.5	121.5	117.4	113.1	108.7	99.2	76.9	44.4
2	99.2	98.7	98.2	96.7	94.1	91.5	88.8	85.9	83.0	80.0	76.9	70.2	54.4	31.4
3	81.0	80.6	80.2	79.0	76.9	74.7	72.5	70.2	67.8	65.3	62.8	57.3	44.4	25.6
4	70.1	69.8	69.5	68.4	66.6	64.7	62.8	60.8	58.7	56.6	54.4	49.6	38.4	22.2
5	62.7	62.4	62.1	61.2	59.5	57.9	56.1	54.4	52.5	50.6	48.6	44.4	34.4	19.8
6	*****	57.0	56.7	55.8	54.4	52.8	51.2	49.6	47.9	46.2	44.4	40.5	31.4	18.1
7	*****	52.8	52.5	51.7	50.3	48.9	47.4	45.9	44.4	42.8	41.1	37.5	29.1	16.8
8	*****	49.4	49.1	48.4	47.1	45.7	44.4	43.0	41.5	40.0	38.4	35.1	27.2	15.7
9	*****	46.5	46.3	45.6	44.4	43.1	41.8	40.5	39.1	37.7	36.2	33.1	25.6	14.8
10	*****	44.2	43.9	43.3	42.1	40.9	39.7	38.4	37.1	35.8	34.4	31.4	24.3	14.0
11	*****	42.1	41.9	41.2	40.1	39.0	37.8	36.6	35.4	34.1	32.8	29.9	23.2	13.4
12	*****	40.3	40.1	39.5	38.4	37.4	36.2	35.1	33.9	32.7	31.4	28.6	22.2	12.8
13	*****	38.7	38.5	37.9	36.9	35.9	34.8	33.7	32.6	31.4	30.2	27.5	21.3	12.3
14	*****	37.3	37.1	36.6	35.6	34.6	33.5	32.5	31.4	30.2	29.1	26.5	20.5	11.9
15	*****	36.1	35.9	35.3	34.4	33.4	32.4	31.4	30.3	29.2	28.1	25.6	19.8	11.5
16	*****	34.9	34.7	34.2	33.3	32.3	31.4	30.4	29.4	28.3	27.2	24.8	19.2	11.1
17	*****	33.9	33.7	33.2	32.3	31.4	30.4	29.5	28.5	27.4	26.4	24.1	18.6	10.8
18	*****	32.9	32.7	32.2	31.4	30.5	29.6	28.6	27.7	26.7	25.6	23.4	18.1	10.5
19	*****	32.0	31.9	31.4	30.5	29.7	28.8	27.9	26.9	26.0	24.9	22.8	17.6	10.2
20	*****	31.2	31.1	30.6	29.8	28.9	28.1	27.2	26.3	25.3	24.3	22.2	17.2	9.9
21	*****	30.5	30.3	29.9	29.1	28.2	27.4	26.5	25.6	24.7	23.7	21.7	16.8	9.7
22	*****	29.8	29.6	29.2	28.4	27.6	26.8	25.9	25.0	24.1	23.2	21.2	16.4	9.5
23	*****	29.1	29.0	28.5	27.8	27.0	26.2	25.3	24.5	23.6	22.7	20.7	16.0	9.3
24	*****	28.5	28.4	27.9	27.2	26.4	25.6	24.8	24.0	23.1	22.2	20.3	15.7	9.1
25	*****	27.9	27.8	27.4	26.6	25.9	25.1	24.3	23.5	22.6	21.7	19.8	15.4	8.9
30	*****	25.5	25.4	25.0	24.3	23.6	22.9	22.2	21.4	20.7	19.8	18.1	14.0	8.1
35	*****	23.6	23.5	23.1	22.5	21.9	21.2	20.5	19.8	19.1	18.4	16.8	13.0	7.5
40	*****	22.1	22.0	21.6	21.1	20.5	19.8	19.2	18.6	17.9	17.2	15.7	12.2	7.0
45	*****	20.8	20.7	20.4	19.8	19.3	18.7	18.1	17.5	16.9	16.2	14.8	11.5	6.6
50	*****	19.7	19.6	19.3	18.8	18.3	17.8	17.2	16.6	16.0	15.4	14.0	10.9	6.3
55	*****	18.7	18.4	18.0	17.4	16.9	16.4	15.8	15.3	14.7	14.0	12.8	9.9	5.7
60	*****	17.9	17.7	17.2	16.7	16.2	15.7	15.2	14.6	14.0	13.5	12.3	9.5	5.5
65	*****	17.2	17.0	16.5	16.0	15.6	15.1	14.6	14.0	13.5	13.0	11.9	9.2	5.3
70	*****	16.6	16.3	15.9	15.5	15.0	14.5	14.0	13.5	13.0	12.6	11.5	8.9	5.1
75	*****	16.0	15.8	15.4	14.9	14.5	14.0	13.6	13.1	12.6	12.1	11.0	8.3	4.8
80	*****	15.5	15.3	14.9	14.5	14.0	13.6	13.2	12.7	12.3	11.8	10.8	8.3	4.8
85	*****	15.1	14.8	14.4	14.0	13.6	13.2	12.7	12.3	11.8	11.3	10.3	7.9	4.6
90	*****	14.6	14.4	14.0	13.6	13.2	12.8	12.4	11.9	11.5	11.0	10.0	7.4	4.4
95	*****	14.3	14.0	13.7	13.3	12.9	12.5	12.0	11.6	11.2	10.7	9.7	7.1	4.2
100	*****	13.9	13.7	13.3	12.9	12.6	12.2	11.7	11.3	10.9	10.4	9.4	6.9	4.0
125	*****	12.2	11.9	11.6	11.2	10.9	10.5	10.1	9.7	9.3	8.9	8.1	6.3	3.6
150	*****	11.2	10.9	10.6	10.2	9.9	9.6	9.2	8.9	8.5	8.1	7.3	5.5	3.1
200	*****	9.7	9.4	9.1	8.9	8.6	8.3	8.0	7.7	7.4	7.0	6.3	4.9	2.8
250	*****	8.7	8.4	8.2	7.9	7.7	7.4	7.2	6.9	6.7	6.3	5.7	4.4	2.6
300	*****	7.7	7.5	7.2	7.0	6.8	6.5	6.3	6.0	5.8	5.5	4.9	3.7	2.4
350	*****	7.1	6.9	6.7	6.5	6.3	6.0	5.8	5.5	5.3	5.0	4.4	3.3	2.2
400	*****	6.7	6.5	6.3	6.1	5.9	5.7	5.5	5.3	5.1	4.9	4.3	3.2	2.1
450	*****	6.3	6.1	5.9	5.7	5.5	5.3	5.1	4.9	4.7	4.5	3.9	2.8	1.9
500	*****	6.0	5.8	5.6	5.4	5.2	5.0	4.8	4.6	4.4	4.2	3.6	2.5	1.7
750	*****	4.7	4.6	4.4	4.3	4.1	4.0	3.8	3.6	3.4	3.2	2.7	1.9	1.3
1000	*****	4.0	3.8	3.7	3.6	3.4	3.3	3.1	3.0	2.8	2.7	2.2	1.6	1.1
1500	*****	3.0	2.9	2.8	2.7	2.6	2.5	2.4	2.3	2.2	2.1	1.7	1.2	0.8
2000	*****	2.4	2.3	2.2	2.1	2.0	1.9	1.8	1.7	1.6	1.5	1.2	0.8	0.5
3000	*****	1.4	1.3	1.2	1.1	1.0	0.9	0.8	0.7	0.6	0.5	0.4	0.3	0.2
4000	*****	0.7	0.6	0.5	0.4	0.3	0.2	0.2	0.1	0.1	0.1	0.1	0.1	0.1

NOTE: FOR CORRECT USAGE OF THESE TABLES PLEASE REFER TO MICRODATA DOCUMENTATION

Canadian Community Health Survey (CCHS) – Healthy Aging – PUMF

Canadian Community Health Survey (CCHS) - Healthy Aging

Manitoba

NUMERATOR OF PERCENTAGE ('000)	ESTIMATED PERCENTAGE													
	0.1%	1.0%	2.0%	5.0%	10.0%	15.0%	20.0%	25.0%	30.0%	35.0%	40.0%	50.0%	70.0%	90.0%
1	*****	63.2	62.9	61.9	60.3	58.6	56.8	55.0	53.1	51.2	49.2	44.9	34.8	20.1
2	*****	44.7	44.5	43.8	42.6	41.4	40.2	38.9	37.6	36.2	34.8	31.8	24.6	14.2
3	*****	36.5	36.3	35.7	34.8	33.8	32.8	31.8	30.7	29.6	28.4	25.9	20.1	11.6
4	*****	31.6	31.4	31.0	30.1	29.3	28.4	27.5	26.6	25.6	24.6	22.5	17.4	10.0
5	*****	*****	28.1	27.7	27.0	26.2	25.4	24.6	23.8	22.9	22.0	20.1	15.6	9.0
6	*****	*****	25.7	25.3	24.6	23.9	23.2	22.5	21.7	20.9	20.1	18.3	14.2	8.2
7	*****	*****	23.8	23.4	22.8	22.1	21.5	20.8	20.1	19.4	18.6	17.0	13.2	7.6
8	*****	*****	22.2	21.9	21.3	20.7	20.1	19.5	18.8	18.1	17.4	15.9	12.3	7.1
9	*****	*****	21.0	20.6	20.1	19.5	18.9	18.3	17.7	17.1	16.4	15.0	11.6	6.7
10	*****	*****	*****	19.6	19.1	18.5	18.0	17.4	16.8	16.2	15.6	14.2	11.0	6.4
11	*****	*****	*****	18.7	18.2	17.7	17.1	16.6	16.0	15.4	14.8	13.5	10.5	6.1
12	*****	*****	*****	17.9	17.4	16.9	16.4	15.9	15.3	14.8	14.2	13.0	10.0	5.8
13	*****	*****	*****	17.2	16.7	16.2	15.8	15.3	14.7	14.2	13.6	12.5	9.7	5.6
14	*****	*****	*****	16.5	16.1	15.7	15.2	14.7	14.2	13.7	13.2	12.0	9.3	5.4
15	*****	*****	*****	16.0	15.6	15.1	14.7	14.2	13.7	13.2	12.7	11.6	9.0	5.2
16	*****	*****	*****	15.5	15.1	14.6	14.2	13.8	13.3	12.8	12.3	11.2	8.7	5.0
17	*****	*****	*****	15.0	14.6	14.2	13.8	13.3	12.9	12.4	11.9	10.9	8.4	4.9
18	*****	*****	*****	14.6	14.2	13.8	13.4	13.0	12.5	12.1	11.6	10.6	8.2	4.7
19	*****	*****	*****	14.2	13.8	13.4	13.0	12.6	12.2	11.7	11.3	10.3	8.0	4.6
20	*****	*****	*****	13.8	13.5	13.1	12.7	12.3	11.9	11.5	11.0	10.0	7.8	4.5
21	*****	*****	*****	13.5	13.2	12.8	12.4	12.0	11.6	11.2	10.7	9.8	7.6	4.4
22	*****	*****	*****	13.2	12.8	12.5	12.1	11.7	11.3	10.9	10.5	9.6	7.4	4.3
23	*****	*****	*****	12.6	12.2	11.8	11.5	11.1	10.7	10.3	9.4	7.3	4.2	4.2
24	*****	*****	*****	12.3	12.0	11.6	11.2	10.8	10.5	10.0	9.2	7.1	4.1	4.1
25	*****	*****	*****	12.1	11.7	11.4	11.0	10.6	10.2	9.8	9.0	7.0	4.0	4.0
30	*****	*****	*****	11.0	10.7	10.4	10.0	9.7	9.4	9.0	8.2	6.4	3.7	3.7
35	*****	*****	*****	10.2	9.9	9.6	9.3	9.0	8.7	8.3	7.6	5.9	3.4	3.4
40	*****	*****	*****	9.5	9.3	9.0	8.7	8.4	8.1	7.8	7.1	5.5	3.2	3.2
45	*****	*****	*****	9.0	8.7	8.5	8.2	7.9	7.6	7.3	6.7	5.2	3.0	3.0
50	*****	*****	*****	8.3	8.0	7.8	7.5	7.2	7.0	6.7	6.4	4.9	2.8	2.8
55	*****	*****	*****	7.9	7.7	7.4	7.2	6.9	6.6	6.4	6.1	4.7	2.7	2.7
60	*****	*****	*****	7.6	7.3	7.1	6.9	6.6	6.4	6.2	5.8	4.5	2.6	2.6
65	*****	*****	*****	7.3	7.0	6.8	6.6	6.4	6.2	6.0	5.6	4.3	2.5	2.5
70	*****	*****	*****	6.8	6.6	6.4	6.2	6.0	5.8	5.6	5.2	4.0	2.4	2.4
75	*****	*****	*****	6.6	6.4	6.2	6.0	5.8	5.6	5.4	5.0	3.9	2.2	2.2
80	*****	*****	*****	6.4	6.2	6.0	5.8	5.6	5.4	5.2	4.8	3.7	2.1	2.1
85	*****	*****	*****	6.2	6.0	5.8	5.6	5.4	5.2	5.0	4.6	3.6	2.1	2.1
90	*****	*****	*****	6.0	5.8	5.6	5.4	5.2	5.0	4.8	4.4	3.4	2.0	2.0
95	*****	*****	*****	5.6	5.5	5.3	5.2	5.0	4.8	4.6	4.4	3.4	2.0	2.0
100	*****	*****	*****	5.5	5.3	5.1	4.9	4.7	4.5	4.3	4.0	3.1	1.8	1.8
125	*****	*****	*****	4.8	4.6	4.4	4.2	4.0	3.8	3.6	3.4	2.6	1.6	1.6
150	*****	*****	*****	4.2	4.0	3.8	3.6	3.4	3.2	3.0	2.8	2.1	1.3	1.3
200	*****	*****	*****	3.2	3.0	2.8	2.6	2.4	2.2	2.0	1.8	1.4	0.9	0.9
250	*****	*****	*****	2.2	2.0	1.8	1.6	1.4	1.2	1.0	0.8	0.6	0.4	0.4
300	*****	*****	*****	2.0	1.8	1.6	1.4	1.2	1.0	0.8	0.6	0.4	0.3	0.3
350	*****	*****	*****	1.8	1.6	1.4	1.2	1.0	0.8	0.6	0.4	0.3	0.2	0.2
400	*****	*****	*****	1.6	1.4	1.2	1.0	0.8	0.6	0.4	0.3	0.2	0.1	0.1

NOTE: FOR CORRECT USAGE OF THESE TABLES PLEASE REFER TO MICRODATA DOCUMENTATION

Canadian Community Health Survey (CCHS) – Healthy Aging – PUMF

Canadian Community Health Survey (CCHS) - Healthy Aging

Saskatchewan

NUMERATOR OF PERCENTAGE ('000)	ESTIMATED PERCENTAGE													
	0.1%	1.0%	2.0%	5.0%	10.0%	15.0%	20.0%	25.0%	30.0%	35.0%	40.0%	50.0%	70.0%	90.0%
1	*****	61.4	61.1	60.1	58.5	56.9	55.2	53.4	51.6	49.7	47.8	43.6	33.8	19.5
2	*****	43.4	43.2	42.5	41.4	40.2	39.0	37.8	36.5	35.2	33.8	30.8	23.9	13.8
3	*****	35.4	35.2	34.7	33.8	32.8	31.8	30.8	29.8	28.7	27.6	25.2	19.5	11.3
4	*****	*****	30.5	30.1	29.3	28.4	27.6	26.7	25.8	24.9	23.9	21.8	16.9	9.8
5	*****	*****	27.3	26.9	26.2	25.4	24.7	23.9	23.1	22.2	21.4	19.5	15.1	8.7
6	*****	*****	24.9	24.5	23.9	23.2	22.5	21.8	21.1	20.3	19.5	17.8	13.8	8.0
7	*****	*****	23.1	22.7	22.1	21.5	20.8	20.2	19.5	18.8	18.1	16.5	12.8	7.4
8	*****	*****	*****	21.3	20.7	20.1	19.5	18.9	18.2	17.6	16.9	15.4	11.9	6.9
9	*****	*****	*****	20.0	19.5	19.0	18.4	17.8	17.2	16.6	15.9	14.5	11.3	6.5
10	*****	*****	*****	19.0	18.5	18.0	17.4	16.9	16.3	15.7	15.1	13.8	10.7	6.2
11	*****	*****	*****	18.1	17.6	17.1	16.6	16.1	15.6	15.0	14.4	13.1	10.2	5.9
12	*****	*****	*****	17.4	16.9	16.4	15.9	15.4	14.9	14.4	13.8	12.6	9.8	5.6
13	*****	*****	*****	16.7	16.2	15.8	15.3	14.8	14.3	13.8	13.2	12.1	9.4	5.4
14	*****	*****	*****	16.1	15.6	15.2	14.7	14.3	13.8	13.3	12.8	11.7	9.0	5.2
15	*****	*****	*****	15.5	15.1	14.7	14.2	13.8	13.3	12.8	12.3	11.3	8.7	5.0
16	*****	*****	*****	15.0	14.6	14.2	13.8	13.4	12.9	12.4	11.9	10.9	8.4	4.9
17	*****	*****	*****	14.6	14.2	13.8	13.4	13.0	12.5	12.1	11.6	10.6	8.2	4.7
18	*****	*****	*****	14.2	13.8	13.4	13.0	12.6	12.2	11.7	11.3	10.3	8.0	4.6
19	*****	*****	*****	13.8	13.4	13.0	12.7	12.3	11.8	11.4	11.0	10.0	7.7	4.5
20	*****	*****	*****	*****	13.1	12.7	12.3	11.9	11.5	11.1	10.7	9.8	7.6	4.4
21	*****	*****	*****	*****	12.8	12.4	12.0	11.7	11.3	10.9	10.4	9.5	7.4	4.3
22	*****	*****	*****	*****	12.5	12.1	11.8	11.4	11.0	10.6	10.2	9.3	7.2	4.2
23	*****	*****	*****	*****	12.2	11.9	11.5	11.1	10.8	10.4	10.0	9.1	7.0	4.1
24	*****	*****	*****	*****	11.9	11.6	11.3	10.9	10.5	10.1	9.8	8.9	6.9	4.0
25	*****	*****	*****	*****	11.7	11.4	11.0	10.7	10.3	9.9	9.6	8.7	6.8	3.9
30	*****	*****	*****	*****	10.7	10.4	10.1	9.8	9.4	9.1	8.7	8.0	6.2	3.6
35	*****	*****	*****	*****	9.9	9.6	9.3	9.0	8.7	8.4	8.1	7.4	5.7	3.3
40	*****	*****	*****	*****	*****	9.0	8.7	8.4	8.2	7.9	7.6	6.9	5.3	3.1
45	*****	*****	*****	*****	*****	8.5	8.2	8.0	7.7	7.4	7.1	6.5	5.0	2.9
50	*****	*****	*****	*****	*****	8.0	7.8	7.6	7.3	7.0	6.8	6.2	4.8	2.8
55	*****	*****	*****	*****	*****	7.7	7.4	7.2	7.0	6.7	6.4	5.9	4.6	2.6
60	*****	*****	*****	*****	*****	7.1	6.9	6.7	6.4	6.2	6.0	5.6	4.4	2.5
65	*****	*****	*****	*****	*****	*****	6.8	6.6	6.4	6.2	5.9	5.4	4.2	2.4
70	*****	*****	*****	*****	*****	*****	6.6	6.4	6.2	5.9	5.7	5.2	4.0	2.3
75	*****	*****	*****	*****	*****	*****	6.4	6.2	6.0	5.7	5.5	5.0	3.9	2.3
80	*****	*****	*****	*****	*****	*****	*****	6.0	5.8	5.6	5.3	4.9	3.8	2.2
85	*****	*****	*****	*****	*****	*****	*****	5.8	5.6	5.4	5.2	4.7	3.7	2.1
90	*****	*****	*****	*****	*****	*****	*****	5.6	5.4	5.2	5.0	4.6	3.6	2.1
95	*****	*****	*****	*****	*****	*****	*****	5.5	5.3	5.1	4.9	4.5	3.5	2.0
100	*****	*****	*****	*****	*****	*****	*****	*****	5.2	5.0	4.8	4.4	3.4	2.0
125	*****	*****	*****	*****	*****	*****	*****	*****	4.4	4.3	3.9	3.0	1.7	1.0
150	*****	*****	*****	*****	*****	*****	*****	*****	*****	3.9	3.6	2.8	1.6	1.0
200	*****	*****	*****	*****	*****	*****	*****	*****	*****	*****	*****	2.4	1.4	1.0
250	*****	*****	*****	*****	*****	*****	*****	*****	*****	*****	*****	*****	2.1	1.2
300	*****	*****	*****	*****	*****	*****	*****	*****	*****	*****	*****	*****	1.1	1.0
350	*****	*****	*****	*****	*****	*****	*****	*****	*****	*****	*****	*****	1.1	1.0

NOTE: FOR CORRECT USAGE OF THESE TABLES PLEASE REFER TO MICRODATA DOCUMENTATION

Canadian Community Health Survey (CCHS) – Healthy Aging – PUMF

Canadian Community Health Survey (CCHS) - Healthy Aging

Alberta

NUMERATOR OF PERCENTAGE ('000)	ESTIMATED PERCENTAGE													
	0.1%	1.0%	2.0%	5.0%	10.0%	15.0%	20.0%	25.0%	30.0%	35.0%	40.0%	50.0%	70.0%	90.0%
1	100.8	100.3	99.8	98.3	95.7	93.0	90.2	87.3	84.4	81.3	78.1	71.3	55.2	31.9
2	*****	70.9	70.6	69.5	67.6	65.7	63.8	61.7	59.7	57.5	55.2	50.4	39.1	22.5
3	*****	57.9	57.6	56.7	55.2	53.7	52.1	50.4	48.7	46.9	45.1	41.2	31.9	18.4
4	*****	50.2	49.9	49.1	47.8	46.5	45.1	43.7	42.2	40.6	39.1	35.7	27.6	15.9
5	*****	44.9	44.6	44.0	42.8	41.6	40.3	39.1	37.7	36.4	34.9	31.9	24.7	14.3
6	*****	41.0	40.8	40.1	39.1	38.0	36.8	35.7	34.4	33.2	31.9	29.1	22.5	13.0
7	*****	37.9	37.7	37.1	36.2	35.1	34.1	33.0	31.9	30.7	29.5	26.9	20.9	12.1
8	*****	35.5	35.3	34.7	33.8	32.9	31.9	30.9	29.8	28.7	27.6	25.2	19.5	11.3
9	*****	33.4	33.3	32.8	31.9	31.0	30.1	29.1	28.1	27.1	26.0	23.8	18.4	10.6
10	*****	31.7	31.6	31.1	30.3	29.4	28.5	27.6	26.7	25.7	24.7	22.5	17.5	10.1
11	*****	30.3	30.1	29.6	28.8	28.0	27.2	26.3	25.4	24.5	23.6	21.5	16.7	9.6
12	*****	29.0	28.8	28.4	27.6	26.8	26.0	25.2	24.4	23.5	22.5	20.6	15.9	9.2
13	*****	*****	27.7	27.3	26.5	25.8	25.0	24.2	23.4	22.5	21.7	19.8	15.3	8.8
14	*****	*****	26.7	26.3	25.6	24.8	24.1	23.3	22.5	21.7	20.9	19.1	14.8	8.5
15	*****	*****	25.8	25.4	24.7	24.0	23.3	22.5	21.8	21.0	20.2	18.4	14.3	8.2
16	*****	*****	25.0	24.6	23.9	23.2	22.5	21.8	21.1	20.3	19.5	17.8	13.8	8.0
17	*****	*****	24.2	23.8	23.2	22.5	21.9	21.2	20.5	19.7	18.9	17.3	13.4	7.7
18	*****	*****	23.5	23.2	22.5	21.9	21.3	20.6	19.9	19.2	18.4	16.8	13.0	7.5
19	*****	*****	22.9	22.5	21.9	21.3	20.7	20.0	19.4	18.7	17.9	16.4	12.7	7.3
20	*****	*****	22.3	22.0	21.4	20.8	20.2	19.5	18.9	18.2	17.5	15.9	12.3	7.1
21	*****	*****	21.8	21.4	20.9	20.3	19.7	19.1	18.4	17.7	17.0	15.6	12.1	7.0
22	*****	*****	21.3	21.0	20.4	19.8	19.2	18.6	18.0	17.3	16.7	15.2	11.8	6.8
23	*****	*****	20.8	20.5	19.9	19.4	18.8	18.2	17.6	17.0	16.3	14.9	11.5	6.6
24	*****	*****	20.4	20.1	19.5	19.0	18.4	17.8	17.2	16.6	15.9	14.6	11.3	6.5
25	*****	*****	20.0	19.7	19.1	18.6	18.0	17.5	16.9	16.3	15.6	14.3	11.0	6.4
30	*****	*****	*****	17.9	17.5	17.0	16.5	15.9	15.4	14.8	14.3	13.0	10.1	5.8
35	*****	*****	*****	16.6	16.2	15.7	15.2	14.8	14.3	13.7	13.2	12.1	9.3	5.4
40	*****	*****	*****	15.5	15.1	14.7	14.3	13.8	13.3	12.9	12.3	11.3	8.7	5.0
45	*****	*****	*****	14.7	14.3	13.9	13.4	13.0	12.6	12.1	11.6	10.6	8.2	4.8
50	*****	*****	*****	13.9	13.5	13.1	12.8	12.3	11.9	11.5	11.0	10.1	7.8	4.5
55	*****	*****	*****	13.3	12.9	12.5	12.2	11.8	11.4	11.0	10.5	9.6	7.4	4.3
60	*****	*****	*****	12.7	12.3	12.0	11.6	11.3	10.9	10.5	10.1	9.2	7.1	4.1
65	*****	*****	*****	*****	11.9	11.5	11.2	10.8	10.5	10.1	9.7	8.8	6.9	4.0
70	*****	*****	*****	*****	11.4	11.1	10.8	10.4	10.1	9.7	9.3	8.5	6.6	3.8
75	*****	*****	*****	*****	11.0	10.7	10.4	10.1	9.7	9.4	9.0	8.2	6.4	3.7
80	*****	*****	*****	*****	10.7	10.4	10.1	9.8	9.4	9.1	8.7	8.0	6.2	3.6
85	*****	*****	*****	*****	10.4	10.1	9.8	9.5	9.2	8.8	8.5	7.7	6.0	3.5
90	*****	*****	*****	*****	10.1	9.8	9.5	9.2	8.9	8.6	8.2	7.5	5.8	3.4
95	*****	*****	*****	*****	9.8	9.5	9.3	9.0	8.7	8.3	8.0	7.3	5.7	3.3
100	*****	*****	*****	*****	9.6	9.3	9.0	8.7	8.4	8.1	7.8	7.1	5.5	3.2
125	*****	*****	*****	*****	8.6	8.3	8.1	7.8	7.5	7.3	7.0	6.4	4.9	2.9
150	*****	*****	*****	*****	*****	7.6	7.4	7.1	6.9	6.6	6.4	5.8	4.5	2.6
200	*****	*****	*****	*****	*****	*****	6.4	6.2	6.0	5.7	5.5	5.0	3.9	2.3
250	*****	*****	*****	*****	*****	*****	5.7	5.5	5.3	5.1	4.9	4.5	3.5	2.0
300	*****	*****	*****	*****	*****	*****	*****	5.0	4.9	4.7	4.5	4.1	3.2	1.8
350	*****	*****	*****	*****	*****	*****	*****	*****	4.5	4.3	4.2	3.8	3.0	1.7
400	*****	*****	*****	*****	*****	*****	*****	*****	*****	4.1	3.9	3.6	2.8	1.6
450	*****	*****	*****	*****	*****	*****	*****	*****	*****	*****	3.7	3.4	2.6	1.5
500	*****	*****	*****	*****	*****	*****	*****	*****	*****	*****	3.5	3.2	2.5	1.4
750	*****	*****	*****	*****	*****	*****	*****	*****	*****	*****	*****	*****	2.0	1.2
1000	*****	*****	*****	*****	*****	*****	*****	*****	*****	*****	*****	*****	*****	1.0

NOTE: FOR CORRECT USAGE OF THESE TABLES PLEASE REFER TO MICRODATA DOCUMENTATION

Canadian Community Health Survey (CCHS) – Healthy Aging – PUMF

Canadian Community Health Survey (CCHS) - Healthy Aging

British Columbia

NUMERATOR OF PERCENTAGE ('000)	ESTIMATED PERCENTAGE													
	0.1%	1.0%	2.0%	5.0%	10.0%	15.0%	20.0%	25.0%	30.0%	35.0%	40.0%	50.0%	70.0%	90.0%
1	111.6	111.1	110.6	108.9	105.9	103.0	99.9	96.7	93.4	90.0	86.5	79.0	61.2	35.3
2	*****	78.6	78.2	77.0	74.9	72.8	70.6	68.4	66.1	63.7	61.2	55.8	43.3	25.0
3	*****	64.2	63.8	62.8	61.2	59.4	57.7	55.8	53.9	52.0	49.9	45.6	35.3	20.4
4	*****	55.6	55.3	54.4	53.0	51.5	49.9	48.4	46.7	45.0	43.3	39.5	30.6	17.7
5	*****	49.7	49.4	48.7	47.4	46.0	44.7	43.3	41.8	40.3	38.7	35.3	27.4	15.8
6	*****	45.4	45.1	44.4	43.3	42.0	40.8	39.5	38.1	36.8	35.3	32.2	25.0	14.4
7	*****	42.0	41.8	41.1	40.0	38.9	37.8	36.6	35.3	34.0	32.7	29.8	23.1	13.3
8	*****	39.3	39.1	38.5	37.5	36.4	35.3	34.2	33.0	31.8	30.6	27.9	21.6	12.5
9	*****	37.0	36.9	36.3	35.3	34.3	33.3	32.2	31.1	30.0	28.8	26.3	20.4	11.8
10	*****	35.1	35.0	34.4	33.5	32.6	31.6	30.6	29.5	28.5	27.4	25.0	19.3	11.2
11	*****	33.5	33.3	32.8	31.9	31.0	30.1	29.2	28.2	27.1	26.1	23.8	18.4	10.6
12	*****	32.1	31.9	31.4	30.6	29.7	28.8	27.9	27.0	26.0	25.0	22.8	17.7	10.2
13	*****	30.8	30.7	30.2	29.4	28.6	27.7	26.8	25.9	25.0	24.0	21.9	17.0	9.8
14	*****	29.7	29.5	29.1	28.3	27.5	26.7	25.8	25.0	24.1	23.1	21.1	16.3	9.4
15	*****	28.7	28.5	28.1	27.4	26.6	25.8	25.0	24.1	23.2	22.3	20.4	15.8	9.1
16	*****	27.8	27.6	27.2	26.5	25.7	25.0	24.2	23.4	22.5	21.6	19.7	15.3	8.8
17	*****	27.0	26.8	26.4	25.7	25.0	24.2	23.5	22.7	21.8	21.0	19.2	14.8	8.6
18	*****	26.2	26.1	25.7	25.0	24.3	23.5	22.8	22.0	21.2	20.4	18.6	14.4	8.3
19	*****	*****	25.4	25.0	24.3	23.6	22.9	22.2	21.4	20.7	19.8	18.1	14.0	8.1
20	*****	*****	24.7	24.3	23.7	23.0	22.3	21.6	20.9	20.1	19.3	17.7	13.7	7.9
21	*****	*****	24.1	23.8	23.1	22.5	21.8	21.1	20.4	19.6	18.9	17.2	13.3	7.7
22	*****	*****	23.6	23.2	22.6	22.0	21.3	20.6	19.9	19.2	18.4	16.8	13.0	7.5
23	*****	*****	23.1	22.7	22.1	21.5	20.8	20.2	19.5	18.8	18.0	16.5	12.8	7.4
24	*****	*****	22.6	22.2	21.6	21.0	20.4	19.7	19.1	18.4	17.7	16.1	12.5	7.2
25	*****	*****	22.1	21.8	21.2	20.6	20.0	19.3	18.7	18.0	17.3	15.8	12.2	7.1
30	*****	*****	20.2	19.9	19.3	18.8	18.2	17.7	17.1	16.4	15.8	14.4	11.2	6.4
35	*****	*****	18.7	18.4	17.9	17.4	16.9	16.3	15.8	15.2	14.6	13.3	10.3	6.0
40	*****	*****	*****	17.2	16.8	16.3	15.8	15.3	14.8	14.2	13.7	12.5	9.7	5.6
45	*****	*****	*****	16.2	15.8	15.3	14.9	14.4	13.9	13.4	12.9	11.8	9.1	5.3
50	*****	*****	*****	15.4	15.0	14.6	14.1	13.7	13.2	12.7	12.2	11.2	8.7	5.0
55	*****	*****	*****	14.7	14.3	13.9	13.5	13.0	12.6	12.1	11.7	10.6	8.2	4.8
60	*****	*****	*****	14.1	13.7	13.3	12.9	12.5	12.1	11.6	11.2	10.2	7.9	4.6
65	*****	*****	*****	13.5	13.1	12.8	12.4	12.0	11.6	11.2	10.7	9.8	7.6	4.4
70	*****	*****	*****	13.0	12.7	12.3	11.9	11.6	11.2	10.8	10.3	9.4	7.3	4.2
75	*****	*****	*****	12.6	12.2	11.9	11.5	11.2	10.8	10.4	10.0	9.1	7.1	4.1
80	*****	*****	*****	12.2	11.8	11.5	11.2	10.8	10.4	10.1	9.7	8.8	6.8	3.9
85	*****	*****	*****	11.8	11.5	11.2	10.8	10.5	10.1	9.8	9.4	8.6	6.6	3.8
90	*****	*****	*****	11.5	11.2	10.9	10.5	10.2	9.8	9.5	9.1	8.3	6.4	3.7
95	*****	*****	*****	10.9	10.6	10.2	9.9	9.6	9.2	8.9	8.5	7.7	5.8	3.6
100	*****	*****	*****	10.6	10.3	10.0	9.7	9.3	9.0	8.7	8.4	7.6	5.7	3.5
125	*****	*****	*****	9.5	9.2	8.9	8.7	8.4	8.1	7.7	7.4	6.6	4.7	3.2
150	*****	*****	*****	8.7	8.4	8.2	7.9	7.6	7.4	7.1	6.8	6.0	4.3	2.9
200	*****	*****	*****	7.3	7.1	6.8	6.6	6.4	6.1	5.8	5.5	4.8	3.3	2.5
250	*****	*****	*****	6.5	6.3	6.1	5.9	5.7	5.5	5.3	5.0	4.3	2.9	2.2
300	*****	*****	*****	5.8	5.6	5.4	5.2	5.0	4.8	4.6	4.4	3.7	2.5	2.0
350	*****	*****	*****	5.3	5.2	5.0	4.8	4.6	4.4	4.2	4.0	3.3	2.3	1.9
400	*****	*****	*****	4.8	4.7	4.5	4.3	4.1	3.9	3.7	3.5	2.8	1.9	1.8
450	*****	*****	*****	4.6	4.4	4.2	4.1	3.9	3.7	3.5	3.3	2.6	1.8	1.7
500	*****	*****	*****	4.2	4.0	3.9	3.7	3.5	3.3	3.1	2.9	2.2	1.6	1.6
750	*****	*****	*****	3.2	2.9	2.7	2.5	2.3	2.1	1.9	1.7	1.3	1.0	1.3
1000	*****	*****	*****	1.9	1.8	1.7	1.6	1.5	1.4	1.3	1.2	0.9	0.7	1.1
1500	*****	*****	*****	1.9	1.8	1.7	1.6	1.5	1.4	1.3	1.2	0.9	0.7	0.9

NOTE: FOR CORRECT USAGE OF THESE TABLES PLEASE REFER TO MICRODATA DOCUMENTATION

TABLES OF RELEASE CUT-OFFS FOR TOTALS

Provinces and Canada

PROVINCE	CV	
	CV BETWEEN 0% AND 16.5%	CV BETWEEN 16.5% AND 33.3%
	ACCEPTABLE	MARGINAL
Newfoundland and Labrador	8,500	2,000
Prince Edward Island	2,500	500
Nova Scotia	12,500	3,000
New Brunswick	11,500	3,000
Quebec	53,000	13,000
Ontario	71,500	17,500
Manitoba	14,500	3,500
Saskatchewan	13,500	3,500
Alberta	36,500	9,000
British Columbia	44,500	11,000
CANADA	73,500	18,000

Canada by Age group

AGE GROUP	CV	
	CV BETWEEN 0% AND 16.5%	CV BETWEEN 16.5% AND 33.3%
	ACCEPTABLE	MARGINAL
45-54	120,500	30,000
55-64	41,500	10,000
65-74	29,000	7,000
75-84	23,000	6,000
85+	15,500	4,000