



Catalogue no. 75F0002MIE — No. 007  
ISSN: 1707-2840  
ISBN: 0-662-34861-3

## Research Paper

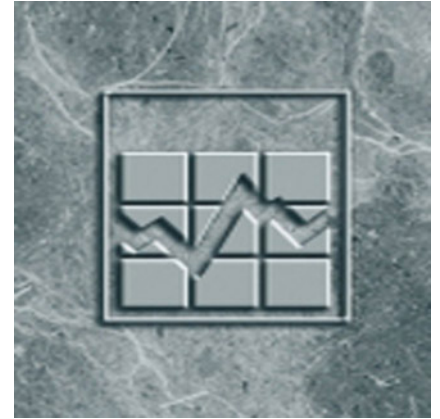
Income research paper series

# SLID Labour Interview Questionnaire - January 2002 - Survey of labour and income dynamics

by Income Statistics Division

Income Statistics Division  
Jean Talon Building, Ottawa, K1A 0T6

Telephone: 613 951-7355



*This paper represents the views of the author and does not necessarily reflect the opinions of Statistics Canada.*



Statistics  
Canada    Statistique  
Canada

Canada

## **How to obtain more information**

Specific inquiries about this product and related statistics or services should be directed to Client Services, Income Statistics Division, Statistics Canada, Ottawa, Ontario, K1A 0T6 ((613) 951-7355; (888) 297-7355; [income@statcan.ca](mailto:income@statcan.ca)).

For information on the wide range of data available from Statistics Canada, you can contact us by calling one of our toll-free numbers. You can also contact us by e-mail or by visiting our Web site.

<b>National inquiries line</b>	<b>1 800 263-1136</b>
<b>National telecommunications device for the hearing impaired</b>	<b>1 800 363-7629</b>
<b>Depository Services Program inquiries</b>	<b>1 800 700-1033</b>
<b>Fax line for Depository Services Program</b>	<b>1 800 889-9734</b>
<b>E-mail inquiries</b>	<b><a href="mailto:infostats@statcan.ca">infostats@statcan.ca</a></b>
<b>Web site</b>	<b><a href="http://www.statcan.ca">www.statcan.ca</a></b>

## **Ordering and subscription information**

This product, Catalogue no. 75F0002MIE2003007, is available on Internet free. Users can obtain single issues at: <http://www.statcan.ca/cgi-bin/downpub/research.cgi>.

## **Standards of service to the public**

Statistics Canada is committed to serving its clients in a prompt, reliable and courteous manner and in the official language of their choice. To this end, the Agency has developed standards of service which its employees observe in serving its clients. To obtain a copy of these service standards, please contact Statistics Canada toll free at 1 800 263-1136.



Statistics Canada  
Income Statistics Division

## Income research paper series

# SLID Labour Interview Questionnaire - January 2002 - Survey of labour and income dynamics

Published by authority of the Minister responsible for Statistics Canada

© Minister of Industry, 2003

All rights reserved. No part of this publication may be reproduced, stored in a retrieval system or transmitted in any form or by any means, electronic, mechanical, photocopying, recording or otherwise without prior written permission from Licence Services, Marketing Division, Statistics Canada, Ottawa, Ontario, Canada K1A 0T6.

September 2003

Catalogue no. 75F0002MIE2003007

ISSN: 1707-2840

ISBN: 0-662-34861-3

Frequency: Irregular

Ottawa

La version française de cette publication est disponible sur demande (n° 75F0002MIF au catalogue).

---

### Note of appreciation

*Canada owes the success of its statistical system to a long-standing partnership between Statistics Canada, the citizens of Canada, its businesses, governments and other institutions. Accurate and timely statistical information could not be produced without their continued cooperation and goodwill.*

## **Executive Summary**

Every January, the Survey of Labour and Income Dynamics (SLID) Labour interview is conducted using computer-assisted interviewing (CAI). CAI is paperless interviewing. This document is therefore a written approximation of the CAI interview, or the questionnaire.

A labour interview is collected for all respondents 16 years of age and over. Panel 2, consisting of approximately 17,500 households, completed its final year with SLID in 2002. Panel 3, introduced in 2000 for reference year 1999 and consisting of approximately 18,500 households, completed its third year with the survey.

This document outlines the structure of the January 2002 Labour interview including question wording, possible responses, and flows of questions.

## Table of contents

1. Introduction.....	6
2. What's new:.....	6
3. How to read this document.....	7
4. Content.....	11
5. Labour interview.....	15
5.1 DA module.....	15
5.2 CH module.....	28
5.3 SE module.....	65
5.4 CO module.....	68
5.5 SP module:.....	72
5.6 ED module.....	77
5.7 DI module.....	93
5.8 EN module.....	99

## 1. Introduction

Every January, the Survey of Labour and Income Dynamics (SLID) Labour interview is conducted using computer-assisted interviewing (CAI). CAI is paperless interviewing. This document is therefore a written approximation of the CAI interview, or the questionnaire. The CAI process is as follows:

- (a) A question appearing on the computer screen is read aloud to the respondent.
- (b) The respondent's answer is directly entered by the interviewer.
- (c) Based on the answer given, and/or age or other flow criterion, the computer determines the next question to be asked and displays it on the screen.

This research paper presents the content of the Labour interview<sup>1</sup> including question wording, possible responses, and flows of questions.

## 2. What's new:

### New questions:

#### CH\_Q102

The question is relevant for studies on job quality, under-employment, school-to-work transitions, etc, or as an explanatory variable for wages, supervisory roles, and job stability. Prior to adding this question, a variable showing the link between occupation and education was derived on an experimental basis by comparing the categories of the 1980 Standard Occupational Classification and with those of the 1991 Census Major Field of Study classification. (For more information, see the Income research paper series, issue 75F0002MIE96005, "Proposed linkage of occupation and major field of study for SLID".) That variable was not adopted, however, primarily because it is difficult to qualify "relatedness" for all pairs of occupation and education. As an alternative, it was felt that most respondents, if asked, would be able to give an assessment concerning their own work and education situations. A self-reported assessment provides an indicator of satisfaction with one's job and/or educational background which may compensate for the lack of objectivity. Furthermore, the question had already been applied and tested in other surveys.

---

<sup>1</sup> The household composition and demographic questions are presented in a separate document.

### ED\_R027

This question was added to eliminate the reporting of post-secondary certificates and diplomas from single courses in questions ED\_Q030, Q055, Q080, Q105, Q130 and Q150.

### **Modified questions:**

#### DA\_Q005

Information that was in brackets at the end of the question is now in an interviewer note.

#### SP\_Q005, SP\_Q015, SP\_Q025, SP\_Q035, SP\_Q045

Due to a processing requirement, the response fields have been changed from 6 to 8-bytes long.

#### DI\_Q020, DI\_Q025, DI\_Q030, DI\_Q033

The last part of each question is now underlined to emphasize the difference between each question.

Responses 'Yes, sometimes', 'Yes often', 'No' are now read out loud.

#### CH\_Q345, CH\_Q390

Response category 02 now reads "Maternity leave (females only)"

Added new response category 03 "Paternity leave (males only)"

Previous response categories 03 to 12 have all increased by 1.

#### CH\_Q055

Changed flow logic for job type = 3 (new job)

### **3. How to read this document**

**Question numbers:** For each section, the question numbers refer to the actual numbers used in the software and which appear on an interviewer's computer screen. **Bold** text is read, as worded, by the interviewer. Instructions for the interviewer are preceded by the word, "INTERVIEWER" and are not read out loud to the respondent.

**Naming conventions:** Naming conventions conform to the standards for Statistics Canada social surveys.

Questions with:        Q (e.g. DA\_Q065) = question  
                              C (e.g. ED\_C001) = internal check  
                              N (e.g. ED\_N045) = interviewer instructions  
                              E (e.g. CH\_E010) = interviewer instruction edit

**Pre-fill items:** Shown in square brackets [ ] are items specific to each respondent's interview. The software adds the relevant information into the question, making it simply a matter of reading for the interviewer. Pre-fill items include:

[respondent] - This is the first and last name of the household member to whom the questions refer. This is not necessarily the person who is talking to the interviewer.

[fname] - This is the first name of the household member to whom the questions refer. This is not necessarily the person who is talking to the interviewer

[reference year] - This is the year **for which** the information is collected (2001).

[current year] - This is the year **during which** the information is collected (2002).

[employer] - This is the employer referred to in the question. Questions may be asked for a maximum of six employers. In each case, the specific employer's name is placed in the pre-fill item.

[class of worker] - Indicates whether the respondent is a paid worker, self-employed or working in a family business without pay.

[type of work] - This is a short description of the respondent's occupation or type of work performed, at last contact.

[industry] - This is a description of the industry of the employer as provided by the respondent.

[start date] and [end date] - Depending on the question, these refer to either the start and end dates of a specific job, of an unpaid absence, or a jobless spell.

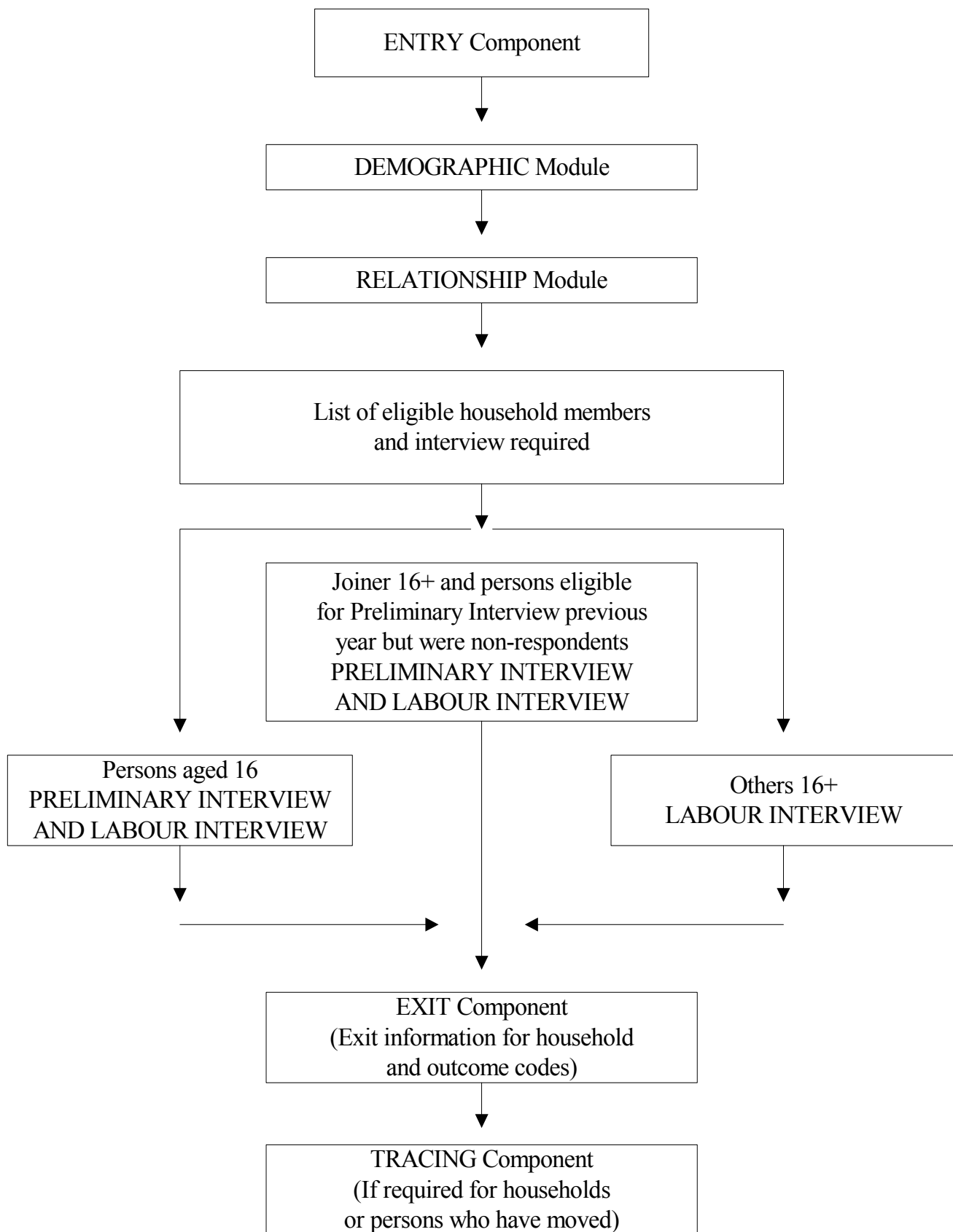
[prefill from Empl.oldwage and Empl.oldwageu] - Wage reported previous year for respondent.



**Ranges:** Hard and soft ranges are specified for some of the questions. The hard range gives the highest and lowest acceptable response values. For example, in CH\_Q110 (number of employees supervised directly) a hard range of 1 - 995 exists. If the interviewer tries to enter a number greater than 995, the system will not accept this.

The soft range specifies an upper limit which, if exceeded, will result in a probe to confirm that the amount entered is correct. If it is correct, the interviewer can enter it as long as it does not exceed the hard range. For example, if the respondent states that the number of people supervised was 65, this exceeds the soft range of > 60. If confirmed as correct, the interviewer can enter this amount as it does not exceed the 995 upper limit of the hard range.

**Dates:** All dates are in DD/MM/YYYY format unless otherwise specified.



#### **4. Content**

The general flow of the Labour interview is given in the flowchart on the previous page.

An initial divergence based on age can be seen. Those aged 16-69 are asked the labour series of questions, while those 70 years and over flow to DA\_Q001 (main activity) and then to the Disability (DI) module. For the former, if the respondent worked since the last interview, the characteristics of up to six jobs are asked, followed by identification of jobless spells. If a jobless spell occurred, the respondent is asked the Search (SE) series of questions. These are also asked for respondents who have not worked since the last Labour interview. The Compensation (CO) questions are then asked of all respondents, as are subsequent modules on Spend (SP), Education (ED), Disability (DI) and End-contact (EN).

The Labour interview is comprised of eight main modules as outlined in the following table.

### Modules of the Labour survey and major components

<i>DA</i>	<i>CH</i>	<i>SE</i>	<i>CO</i>	<i>SP</i>	<i>ED</i>	<i>DI</i>	<i>EN</i>
Job Tenure	General Job Characteristics	Jobless Spells	Receipt of Employment Insurance	Receipt of Support Payments	Months Attended School Limitations	Identifies Disabilities/Activity Limitations	Permission to Link to Income Tax
Reasons for Leaving Job	Supervisory/Managerial Responsibilities	Job Search Activities	Receipt of Workers' Compensation	Payment of Support	Type of Educational Establishment	Impact of Condition on Amount and/or the Ability to Work	
	Work Schedule		Receipt of Social Assistance or Welfare	Payments for Child Care	Information on Any Diplomas, Certificates or Degrees Earned		
	Wages & Fringe Benefits						
	Absences from Work for 1 or More Weeks						

DA: Dates -- Employer start and end dates are collected for up to six employers during the year. This module has an employer roster (a list of all employers the person worked for during the year), and a ghost employer roster (a list of former employers reported in previous interviews). Feeding back of employer names from the previous January also occurs in this module. For a person on unpaid absence at the beginning of last January, the absence as well as the employer name is fed back.

Regarding “Don’t know’s” in employer dates: To collect information on an employer, the interviewer must be able to establish the date the person started working for that employer. If the interviewer is able to establish the month the job began, but not the day, the computer will set the day to 01 and the employer will be accepted. Similarly, if the interviewer can establish the month the job ended, but not the day, the computer will set the day to 28. However, if the interviewer cannot get an estimate of the month in which the job started or ended, it is impossible to proceed with that employer, and it is deleted from the roster. If the respondent reports no employers during the past year, the respondent skips to SE.

The following classification of jobs is used in DA:

**Job Type 1** - a job at which the respondent was working on December 31<sup>st</sup> of the previous reference year.

**Job Type 2** - a job at which the respondent was not working on December 31<sup>st</sup> of the previous reference year but to which he/she was attached (i.e. on temporary lay-off or away on an absence of more than four weeks).

**Job Type 3** - a job not previously identified in the survey, generally one at which the respondent started working during the reference year.

Jobless spells are derived from the employer dates, but not confirmed with respondents.

Employment with each employer is characterized as ended or unended, referring to whether the respondent was working for the employer at the

end of the reference year. If a job type 1 is denied, the job is deleted without an array of probing questions. For job type 2, one probing question is asked if the job is denied.

- CH: Characteristics – This will be collected for up to six employers per respondent. For job type 1 and 2, information on employer name, and type of work performed is fed back to the respondent. A change in occupation and wages can be recorded, as can two changes in work schedules for job types 1 and 2. This allows greater precision in deriving implicit hourly wage rates or total annual earnings from an employer (total annual earnings from all employers will also be collected in May in the income interview). The number of absences of one week or more (except paid vacation), and details on the first and last absences with each employer are also recorded.
- SE: Search -- If there was a jobless spell identified in 'DA' or if the respondent did not work at any time in the year, the flow will be directed to this module. For each jobless spell, there are a series of questions on job search, and the desire for employment. For people who begin the year with a jobless spell, the search status in January is fed back to the respondent only if they were looking for work.
- CO: Compensation – This module asks questions regarding receipt of Employment Insurance, Social Assistance, or Workers' Compensation. This information is collected for everyone, independently of any reported job absences and jobless spells. The information which is collected includes:
- receipt of Employment Insurance, Workers Compensation, and Social Assistance during reference year;
  - months received.
- SP: Spend – This module requests information on support payments, both paid and received. Also, there are questions on child care expenses. The first time SLID collected this type of information was for reference year 1999.

- ED: Education – This module on formal education includes educational activity during the year, and degrees, certificates or diplomas obtained. If respondents attended more than one type of educational institution, several flows will result providing information also on field of study, program length, and whether studies were part-time, full-time, or both. By asking question ED\_Q150 about other degrees, certificates or diplomas received during the reference year, this identifies situations where a respondent received a degree in 2001 although the program finished the previous year.
- DI: Disability – This module contains questions concerning disability, which have been modified in conjunction with questions that were asked in the 2001 Census. These disability questions are asked of all respondents. The basic structure of the questions concern disability at home, at work and in other activities, but a distinction is made in the questions asked for those who worked versus those who didn't work in the reference year. No questions are asked about disability at work for respondents aged 70+.
- EN: End – This module asks the tax permission question of each respondent in preparation for the May Income survey. If permission is given, then the next contact will be January of the next year, not in May.

## **5. Labour interview**

### **5.1 DA module:**

If respondent < 16 years old: Will not appear on the component screen.

If slidmem.prelflg = 1 go to DA\_Q001 (member is a joiner, a new panel or a member who turned 16), the proxy question was asked in the Preliminary interview.

If slidmem.prelflg = 2 go to PR\_N001 (previously interviewed respondent), the proxy question will be asked in the Labour interview.

PR\_N001:    INTERVIEWER:    Select the name of the person who is providing the information. If the person is not on the list select 'Non-household member'.

[List of all members in the household, age > 15, appears on the screen.]

Header: first and last name of respondent, industry and class of worker

DA\_Q001: **I'd like to ask you a few questions about his main activity at the end of [reference year]. Was [fname]'s main activity . . .**

**I'd like to ask you a few questions about her main activity at the end [reference year]. Was [fname]'s main activity . . .**

**I'd like to ask you a few questions about your main activity at the end of [reference year]. Was your main activity . . .**

01. **Working at a job or business?**
02. **Looking for work?**
03. **Going to school?**
04. **Keeping house?**
05. **Caring for other family members including young children?**
06. **Retired?**
07. **Long term illness or disability?**
08. **Doing volunteer work?**
09. **No main activity?**
10. Other (specify)
98. Refuse
99. Don't know

If answered "Other" go to DA\_Q001S  
Otherwise go to DA\_C005

DA\_Q001S INTERVIEWER: Specify

Maximum: 80 bytes  
go to DA\_C005

DA\_C005: If age > 69 go to DI\_C001

If age is 16 - 69 if job type = 1, go to DA\_Q005  
if job type = 2, go to DA\_Q010  
otherwise, go to DA\_Q015

DA\_Q005: **Based on our interview of a year ago, he was working for [employer] around the beginning of January [reference year]. Is this correct?**



**Based on our interview of a year ago, she was working for [employer] around the beginning of January [reference year]. Is this correct?**

**Based on our interview of a year ago, you were working for [employer] around the beginning of January [reference year]. Is this correct?**

INTERVIEWER: Any spelling errors or clarifications can be made later

1. Yes
2. No
8. Refuse
9. Don't know

If Yes if slidmem.prelflg = 1 go to DA\_C045  
if slidmem.prelflg = 2 go to DA\_Q085  
and set start date to 01/01/reference year  
If No/Refuse/Don't know go to DA\_E005

DA\_E005: Respondent is denying working for this employer in [reference year]. Press 'D' to delete from the Employer Roster.

go to DA\_C001

DA\_C001: If more job type 1 or 2 to be confirmed go to DA\_C120 unless all employers have been denied then go to DA\_Q015.

Header: Industry, class of worker

DA\_Q010: **Based on our interview of a year ago, he had a job with [employer], but he was not at work around the beginning of January [reference year]. Is this correct?** (any spelling errors or clarifications can be made later)

**Based on our interview of a year ago, she had a job with [employer], but she was not at work around the beginning of January [reference year]. Is this correct?** (any spelling errors or clarifications can be made later)

**Based on our interview of a year ago, you had a job with [employer], but you were not at work around the beginning of January [reference year]. Is this correct?** (any spelling errors or clarifications can be made later)

[Screen shows date absence began and reason for absence]

1. Yes
2. No
8. Refuse
9. Don't know

If Yes go to DA\_Q070  
If No/Refuse/Don't know go to DA\_Q025

DA\_Q015: **Did he work at a job or business in [reference year]?**

**Did she work at a job or business in [reference year]?**

**Did you work at a job or business in [reference year]?**

1. Yes
2. No
8. Refuse
9. Don't know

If Yes if there is a ghost employer on  
Ghostemp.dbf go to DA\_Q030;  
if no ghost employer, go to DA\_Q040

If No/Refuse/Don't know if slidmem.prelflg = 1 go to DA\_C015  
if slidmem.prelflg = 2 go to SE\_C001

DA\_C015: If EX\_Q005 = No (never worked at a job or business) set jobless  
spell to all year and go to SE\_C001  
If EX\_Q005 = Yes (has worked at a job or business) or  
Refuse/Don't know go to DA\_Q020

DA\_Q020: **When did he last work at a job or business?**

**When did she last work at a job or business?**

**When did you last work at a job or business?**

INTERVIEWER: If respondent reports working during  
[reference year] go back and change  
DA\_Q015 to 'Yes'.

Interviewer enters day/month/year

Hard range: minimum: [reference year] minus ([age] minus 10)  
(10 years old)  
maximum: reference year minus 1

go to SE\_C001

DA\_Q025: **Was he still working for [employer] around the beginning of January [reference year]?**

**Was she still working for [employer] around the beginning of January [reference year]?**

**Were you still working for [employer] around the beginning of January [reference year]?**

1. Yes
2. No
8. Refuse
9. Don't know

If Yes set job type to 1;  
if slidmem.prelflg = 1 go to DA\_C045  
if slidmem.prelflg = 2 go to DA\_Q085

If No/Refuse/Don't know go to DA\_E025

DA\_E025: Respondent is denying working for this employer in [reference year].  
Press 'D' to delete from the Employer Roster.

go to DA\_C120

DA\_Q030: **For whom did he work?** (name of business, government department or person)

**For whom did she work?** (name of business, government department or person)

**For whom did you work?** (name of business, government department or person)

INTERVIEWER: To select a ghost employer enter the number next to the employer name. To add a new employer, select 'New employer'.

DA\_C030: If ghost employer reported, set ghost job type to 3 and go to DA\_Q055.

If new employer reported, set job type to 3 and go to DA\_N035.

DA\_N035: INTERVIEWER: Enter name of employer (name of business, government department or person).

Maximum: 50 bytes

DA\_C035: If valid answer, set employer name.  
If Refuse/Don't know set employer name to "this employer".

go to DA\_C045

DA\_Q040: **For whom did he work?**

**For whom did she work?**

**For whom did you work?**

INTERVIEWER: Probe for name of business, government department or person.

Maximum: 50 bytes

DA\_C040: Set job type to 3.  
If valid answer, set employer name.  
If Refuse/Don't know, set employer name to 'this employer'.

DA\_C045: If slidmem.prelflg = 1 go to DA\_Q045 (new panel, joiner  
January or May)  
If slidmem.prelflg = 2 go to DA\_Q050 (previously  
interviewed respondent)

DA\_Q045: **When did he start working for [employer]?**

**When did she start working for [employer]?**

**When did you start working for [employer]?**

Interviewer enters day/month/year

Hard range: minimum: reference year minus ([age] minus 10)  
(10 years old)  
maximum: 31/12/reference year

If Refuse/Don't know in day or month set to 01  
If Refuse/Don't know in year go to DA\_E045

Otherwise go to DA\_C046

DA\_E045: A value must be entered in year. Go back and enter a value.

DA\_C046: If the date reported in DA\_Q045 is prior to the reference year, then set the start date on the Employer Roster to January 1<sup>st</sup> of reference year;  
Otherwise set start date to entry in DA\_Q045. This date is used to calculate jobless spells.

go to DA\_Q060

DA\_Q050: **When did he start working for [employer]?**

**When did she start working for [employer]?**

**When did you start working for [employer]?**

Interviewer enters day/month/year

If the date reported in DA\_Q050 is prior to the reference year, then set the start date on the Employer Roster to January 1<sup>st</sup> of reference year;  
Otherwise set start date to entry in DA\_Q050. This date is used to calculate spells.

Hard range: minimum: none  
maximum: 31/12/reference year

Soft range: minimum: 01/01/reference year  
maximum: 31/12/reference year

If Refuse/Don't know in day and/or month set to 01

If Refuse/Don't know in year go to DA\_E050

Otherwise go to DA\_Q060

DA\_E050: A value must be entered in year. Go back and enter a value.

Soft edit for DA\_Q050: If respondent gives minimum date prior to January 1<sup>st</sup> of reference year the following message will pop up:

DA\_E051: We are considering only jobs that started between January 1<sup>st</sup> and December 31<sup>st</sup> of [reference year]. Are you sure this job didn't start between those dates ?

DA\_Q055: **When in [reference year] did he start working for [employer]?**  
**When in [reference year] did she start working for [employer]?**  
**When in [reference year] did you start working for [employer]?**

Interviewer enters day/month/year

Hard range: minimum: 01/01/reference year  
maximum: 31/12/reference year

If Refuse/Don't know in day set to 01  
If Refuse/Don't know in month and/or year go to DA\_N055  
Otherwise go to DA\_Q085

DA\_N055: INTERVIEWER: Dates are critical to continue the interview.  
Go back to DA\_Q055 and enter a month or year otherwise press 'D' to delete employer from Employer Roster.

go to DA\_C120

DA\_Q060: **Did he work for this employer before [year from DA\_Q045 ou DA\_Q050]?**  
**Did she work for this employer before [year from DA\_Q045 ou DA\_Q050]?**  
**Did you work for this employer before [year from DA\_Q045 ou DA\_Q050]?**

1. Yes
2. No
8. Refuse
9. Don't know

If Yes go to DA\_Q065  
If No/Refuse/Don't know go to DA\_Q085

DA\_Q065: **When did he first start working for [employer]?**  
**When did she first start working for [employer]?**  
**When did you first start working for [employer]?**

Interviewer enters month and year

Hard range: minimum: reference year minus ([age] minus 10)  
(10 yrs old)  
maximum: answer in DA\_Q045/DA\_Q050

If Refuse/Don't know in month set to 01  
If Refuse/Don't know in year go to DA\_E065  
Otherwise go to DA\_Q085

DA\_E065: A value must be entered in year. Go back and enter a value.

DA\_Q070: **Did he return to work for [employer] in [reference year]?**

**Did she return to work for [employer] in [reference year]?**

**Did you return to work for [employer] in [reference year]?**

1. Yes
2. No
8. Refuse
9. Don't know

If Yes go to DA\_Q075  
If No go to DA\_Q080  
If Refuse/Don't know go to DA\_C120

DA\_Q075: **When did he return to work for [employer]?**

**When did she return to work for [employer]?**

**When did you return to work for [employer]?**

Interviewer enters day, month and year

Hard range: minimum: 01/01/reference year  
maximum: 31/12/reference year

If Refuse/Don't know in day or month set to 01  
If Refuse/Don't know in year go to DA\_E075  
If slidmem.prelflg = 1 go to DA\_C045  
Otherwise go to DA\_Q085

DA\_E075: A value must be entered in year. Go back and enter a value.

DA\_Q080: **When did he realize that he would not be returning to [employer]?**

**When did she realize that she would not be returning to [employer]?**

**When did you realize that you would not be returning to [employer]?**

Interviewer enters day/month/year

Hard range: minimum: 01/01/reference year  
maximum: 31/12/reference year

If Refuse/Don't know in day or month set to 01  
If Refuse/Don't know in year go to DA\_E080  
Otherwise go to DA\_E081

DA\_E080: A value must be entered in year. Go back and enter a value.

DA\_E081: Respondent is denying working for this employer in [reference year].  
Press 'D' to delete from the Employer Roster.

go to DA\_C120

DA\_Q085: **Did he still have a job with [employer] at the beginning of [current year]?**

**Did she still have a job with [employer] at the beginning of [current year]?**

**Did you still have a job with [employer] at the beginning of [current year]?**

1. Yes
2. No
8. Refuse
9. Don't know

If Yes go to DA\_C120 and set end date to 31/12/reference year

If No/Refuse/Don't know go to DA\_Q090

DA\_Q090: **When did his job with [employer] end?**



**When did her job with [employer] end?**

**When did your job with [employer] end?**

Interviewer enters day, month and year

If Refuse/Don't know in day	set to 01
If Refuse/Don't know in month or year	go to DA_N095
Otherwise	go to DA_Q095

Hard range: minimum: date in DA\_Q050 or if DA\_Q045 < reference year  
set minimum to 01/01/reference year, otherwise  
minimum = DA\_Q045 or DA\_Q050  
maximum: 31/12/reference year

If date entered is < date in DA\_Q045 or DA\_Q050 the following message pops up:  
Date job ended is before date job started.

DA\_N095: Check dates. Month and year when job ended is necessary to continue this interview. Probe for dates; if not available press 'D' to delete employer from Employer Roster.  
Press Up arrow to go back.

go to DA\_C120

DA\_Q095: **Did he leave this job or did the job come to an end?**

**Did she leave this job or did the job come to an end?**

**Did you leave this job or did the job come to an end?**

- |    |                    |               |
|----|--------------------|---------------|
| 1. | Left job           | go to DA_Q100 |
| 2. | Job came to an end | go to DA_Q115 |
| 3. | Both               | go to DA_Q100 |
| 8. | Refuse             | go to DA_C120 |
| 9. | Don't know         | go to DA_C120 |

DA\_Q100: **What was his main reason for leaving this job?**

**What was her main reason for leaving this job?**

**What was your main reason for leaving this job?**

- 01. Own illness or disability
- 02. Caring for own children
- 03. Caring for elder relative(s)
- 04. Other personal or family responsibilities
- 05. School
- 06. Found new job
- 07. Moved to a new residence
- 08. Dissatisfied with job
- 09. Retirement
- 10. To concentrate on other job
- 11. Other (specify)
- 98. Refuse
- 99. Don't know

If answered "Own illness or disability" go to DA\_Q105  
If answered "Dissatisfied with job" go to DA\_Q110  
If answered "Other" go to DA\_Q100S  
Otherwise go to DA\_C120

DA\_Q100S INTERVIEWER: Specify

Maximum: 80 bytes

go to DA\_C120

DA\_Q105: **Was this due to a work related illness or injury?**

- 1. Yes
- 2. No
- 8. Refuse
- 9. Don't know

go to DA\_C120

DA\_Q110: INTERVIEWER: If necessary ask:

**Can you be more specific about why he was not satisfied with this job?**

**Can you be more specific about why she was not satisfied with this job?**

**Can you be more specific about why you were not satisfied with this job?**

01. Poor pay
02. Not enough hours of work
03. Too many hours of work
04. Poor physical conditions (bad ventilation, too noisy, etc.)
05. Sexual harassment
06. Personal conflict with employer / other employees
07. Work too stressful
08. Other (specify)
98. Refuse
99. Don't know

If answered "Other"                    go to DA\_Q110S  
Otherwise                                    go to DA\_C120

DA\_Q110S    INTERVIEWER:    Specify

Maximum: 80 bytes

go to DA\_C120

DA\_Q115:    **What was the main reason why this job came to an end?**

01. Company moved
02. Company went out of business
03. Seasonal nature of work
04. Layoff / business slowdown (not caused by seasonal conditions)
05. Labour dispute
06. Dismissal by employer
07. Temporary job / contract ended
08. Other (specify)
98. Refuse
99. Don't know

If answered "Other"                    go to DA\_Q115S  
Otherwise                                    go to DA\_C120

DA\_Q115S    INTERVIEWER:    Specify

Maximum: 80 bytes

go to DA\_C120

DA\_C120: If there is another job type 1 to be confirmed go to DA\_Q005  
 If there is another job type 2 to be confirmed go to DA\_Q010  
 If DA\_Q010 = Yes and DA\_Q070 = Refuse or  
 Don't know and there are no more employers go to SE\_C001  
 If 6 employers go to DA\_N120  
 Otherwise go to DA\_Q120

DA\_Q120: **Did he work for any other employers in [reference year]?**

**Did she work for any other employers in [reference year]?**

**Did you work for any other employers in [reference year]?**

1. Yes
2. No
8. Refuse
9. Don't know

If Yes if there is a ghost employer, go to DA\_Q030 and repeat for next employer;  
 if no ghost employer, go to DA\_Q040 and repeat for next employer

If No/Refuse/Don't know go to DA\_N120

DA\_N120: INTERVIEWER: Review the information. If changes are necessary use <PgUp> to go back. No further information is needed for deleted employers marked with an 'X'. Press <Enter> to continue.

Employer Name	Start Date	End Date
---------------	------------	----------

If respondent did not work in [reference year] go to SE\_C001  
 If respondent worked in [reference year] go to CH\_C001

## 5.2 CH module

CH\_C001: If job type = 3 go to CH\_Q001  
 If job type = 1 or 2 go to CH\_Q005

Header: Employer name, start date and end date

CH\_Q001: **I would like to ask you a few questions about [respondent's] work with [employer]. What kind of business, industry or service was this?** (e.g. federal government, canning industry, forestry services)

**I would like to ask you a few questions about your work with [employer]. What kind of business, industry or service was this?** (e.g. federal government, canning industry, forestry services)

Maximum: 50 bytes

go to CH\_Q015

CH\_Q005: **I would like to ask you some questions about [respondent's] work with [employer]. Is this still the correct employer name?**

**I would like to ask you some questions about your work with [employer]. Is this still the correct employer name?**

1. Yes
2. No
8. Refuse
9. Don't know

If Yes/Refuse/Don't know      if paid worker go to CH\_Q040;  
if self-employed or working in a  
family business without pay go to  
CH\_Q011

If No      go to CH\_Q010

CH\_Q010: **What is the employer name?**

If paid worker      go to CH\_Q040

If self-employed or working in a  
family business without pay      go to CH\_Q011

If Refuse/Don't know      go to CH\_E010

Maximum: 50 bytes

CH\_E010: **If you don't know the name, can you give me a brief description of the employer?** (e.g. restaurant, hospital, etc.)

If paid worker go to CH\_Q040

If self-employed or working in a family business without pay go to CH\_Q011

CH\_Q011: **Are you still [class of worker]?**

1. Confirmed
2. Not confirmed
8. Refuse
9. Don't know

If confirmed and self employed, go to CH\_Q050;  
and not self employed, go to CH\_Q040

If not confirmed go to CH\_N015

If Refuse/Don't know go to CH\_E015

CH\_Q015: **In this job, was he . . .**

**In this job, was she . . .**

**In this job, were you . . .**

1. **A paid worker?**
2. **Self employed?**
3. **Working in a family business without pay?**
8. Refuse
9. Don't know

If Paid worker go to CH\_Q030

If Self employed go to CH\_Q020

If Working in a family business without pay go to CH\_Q050

Refuse/Don't know go to CH\_E015

CH\_N015: INTERVIEWER: Select correct class of worker

1. **Paid worker**
2. **Self employed**
3. **Working in a family business without pay**
8. Refuse
9. Don't know

If Paid worker go to CH\_Q030

If Self employed go to CH\_Q020

If Working in a family business without pay go to CH\_Q050  
Refuse/Don't know go to CH\_E015

CH\_E015: INTERVIEWER: Class of worker is required for question flow. Go back to previous questions and enter the class of worker.

CH\_Q020: **Did he have an incorporated business?**

**Did she have an incorporated business?**

**Did you have an incorporated business?**

1. Yes
2. No
8. Refuse
9. Don't know

CH\_Q025: **Did he have any employees?**

**Did she have any employees?**

**Did you have any employees?**

1. Yes go to CH\_C040
2. No go to CH\_C040
8. Refuse go to CH\_Q050
9. Don't know go to CH\_Q050

CH\_Q030: **How did he get his job with [employer]?**

**How did she get her job with [employer]?**

**How did you get your job with [employer]?**

01. Contacted employer directly
02. Friend or relative
03. Searched the Internet
04. Placed or answered newspaper ad
05. Employment agency (including Canada Employment Centres)
06. Referral from another employer
07. Contacted directly by employer
08. Union
09. Required for Social Assistance/Welfare-Workfare
10. Other (specify)

- 98. Refuse
- 99. Don't know

If answered "Other"            go to CH\_Q030S  
Otherwise                        go to CH\_C035

CH\_Q030S INTERVIEWER:    Specify

Maximum: 80 bytes

go to CH\_C035

CH\_C035: If slidmem.prelflg = 1 go to CH\_Q038 (new panel, joiners Jan. or May)

If slidmem.prelflg = 2 go to CH\_Q035 (previously interviewed respondent)

CH\_Q035: **When was he offered this job?**

**When was she offered this job?**

**When were you offered this job?**

Hard range: minimum: reference year minus ([age] minus 10)  
(10 years old)

maximum: start date of job  
(DA\_Q045/\_Q050/\_Q055) or  
12/reference year

Soft range: minimum: 01/reference year

maximum: 12/reference year

go to CH\_C040

Soft edit for CH\_Q035:

If respondent gives minimum date prior to January 1 of reference year the following message will pop up:

CH\_E035: **We are considering only jobs that started between January and December of [reference year]. Are you sure about the date you were offered this job?**

CH\_Q038: **When was he offered this job?**

**When was she offered this job?**



**When were you offered this job?**

Hard range: minimum: reference year minus ([age] minus 10)  
(10 years old)  
maximum: start date of job  
(DA\_Q045/\_Q050/\_Q055) or  
12/reference year

CH\_C040: If self employed go to CH\_Q050  
Otherwise go to CH\_Q040

CH\_Q040: **Is his job permanent, or is there some way that it is not permanent?** (e.g. seasonal, temporary, term, casual, etc.)

**Is her job permanent, or is there some way that it is not permanent?** (e.g. seasonal, temporary, term, casual, etc.)

**Is your job permanent, or is there some way that it is not permanent?** (e.g. seasonal, temporary, term, casual, etc.)

1. Permanent
2. Not permanent
8. Refuse
9. Don't know

If Permanent/Refuse/Don't know go to CH\_Q050  
If Not permanent go to CH\_Q045

CH\_Q045: **In what way is his job not permanent?**

**In what way is her job not permanent?**

**In what way is your job not permanent?**

1. **Seasonal job**
2. **Temporary, term or contract job (non-seasonal)**
3. **Casual job**
4. **Work done through a temporary help agency**
5. Other (specify)
8. Refuse
9. Don't know

If answered "Other" go to CH\_Q045S  
Otherwise go to CH\_Q050

CH\_Q045S INTERVIEWER: Specify

Maximum: 80 bytes

go to CH\_Q050

CH\_Q050: **How many persons were employed at the location where he worked for [employer]? Was it . . .**

**How many persons were employed at the location where she worked for [employer]? Was it . . .**

**How many persons were employed at the location where you worked for [employer]? Was it . . .**

1. **Less than 20**
2. **20 to 99**
3. **100 to 499**
4. **500 to 999**
5. **1000 and over**
8. Refuse
9. Don't know

CH\_Q055: **Did this employer operate at more than one location in Canada?**

1. Yes
2. No
8. Refuse
9. Don't know

Yes if CH\_Q050 = 5 and job type = 1 or 2,  
go to CH\_Q065;  
if CH\_Q050 = 5 and job type = 3, go to  
CH\_Q080;  
otherwise, go to CH\_Q060

No/Refuse/Don't know if job type = 1 or 2 go to CH\_Q065;  
if job type = 3 go to CH\_Q080

CH\_Q060: **About how many persons were employed at all these locations? Was it . . .**

INTERVIEWER: Probe for an estimate

1. **Less than 20**
2. **20 to 99**
3. **100 to 499**
4. **500 to 999**
5. **1000 and over**
8. Refuse
9. Don't know

If job type = 1 or 2                    go to CH\_Q065  
 If job type = 3                         go to CH\_Q080

Soft edit on CH\_Q060:  
 If CH\_Q060 < CH\_Q050            go to CH\_E060

CH\_E060: **You reported less people working at all locations than the location where you are working.**

CH\_Q065: **Our records show that in January [reference year], the kind of work he was doing was [type of work]. Is this correct?**

**Our records show that in January [reference year], the kind of work she was doing was [type of work]. Is this correct?**

**Our records show that in January [reference year], the kind of work you were doing was [type of work]. Is this correct?**

1. Yes                                    go to CH\_Q090
2. No                                     go to CH\_Q070
8. Refuse                               go to CH\_Q090
9. Don't know                         go to CH\_Q090

CH\_Q070: **What kind of work was he doing with [employer] in January [reference year]?** (e.g. office clerk, factory worker, forestry technician)

**What kind of work was she doing with [employer] in January [reference year]?** (e.g. office clerk, factory worker, forestry technician)

**What kind of work were you doing with [employer] in January [reference year]?** (e.g. office clerk, factory worker, forestry technician)

Maximum: 50 bytes

CH\_Q075: **What were his most important activities or duties in January [reference year]?** (e.g. filing documents, drying vegetables, forest examiner)

**What were her most important activities or duties in January [reference year]?** (e.g. filing documents, drying vegetables, forest examiner)

**What were your most important activities or duties in January [reference year]?** (e.g. filing documents, drying vegetables, forest examiner)

Maximum: 50 bytes

go to CH\_Q090

CH\_Q080: **What kind of work was he doing with [employer]?**  
(e.g. office clerk, factory worker, forestry technician)

**What kind of work was she doing with [employer]?**  
(e.g. office clerk, factory worker, forestry technician)

**What kind of work were you doing with [employer]?**  
(e.g. office clerk, factory worker, forestry technician)

Maximum: 50 bytes

CH\_Q085: **What were his most important activities or duties?** (e.g. filing documents, drying vegetables, forest examiner)

**What were her most important activities or duties?** (e.g. filing documents, drying vegetables, forest examiner)

**What were your most important activities or duties?** (e.g. filing documents, drying vegetables, forest examiner)

Maximum: 50 bytes

go to CH\_Q102

Header for CH\_Q090, \_Q095, Q\_100 and Q\_102: type of work

CH\_Q090: **Did the kind of work he was doing with [employer] change during [reference year]?**

**Did the kind of work she was doing with [employer] change during [reference year]?**

**Did the kind of work you were doing with [employer] change during [reference year]?**

- |    |            |               |
|----|------------|---------------|
| 1. | Yes        | go to CH_Q095 |
| 2. | No         | go to CH_Q102 |
| 8. | Refuse     | go to CH_Q102 |
| 9. | Don't know | go to CH_Q102 |

CH\_Q095: **What kind of work was he doing [when this job ended] [at the end of reference year]?** (e.g. office clerk, factory worker, forestry technician)

**What kind of work was she doing [when this job ended] [at the end of reference year]?** (e.g. office clerk, factory worker, forestry technician)

**What kind of work were you doing [when this job ended] [at the end of reference year]?** (e.g. office clerk, factory worker, forestry technician)

Maximum: 50 bytes

CH\_Q100: **What were his most important activities or duties [when this job ended] [at the end of reference year]?** (e.g. filing documents, drying vegetables, forest examiner)

**What were her most important activities or duties [when this job ended] [at the end of reference year]?** (e.g. filing documents, drying vegetables, forest examiner)

**What were your most important activities or duties [when this job ended] [at the end of reference year]?** (e.g. filing documents, drying vegetables, forest examiner)

Maximum: 50 bytes

CH\_Q102: **How closely was this job related to [his] education?**

**How closely was this job related to [her] education?**

**How closely was this job related to [your] education?**

1. **Closely related**

2. **Somewhat related**
3. **Not related at all**
8. Refuse
9. Don't know

Header: employer name, start date and end date

CH\_Q105: **In the past year at this job, did he supervise the work of other employees on a day-to-day basis?**

**In the past year at this job, did she supervise the work of other employees on a day-to-day basis?**

**In the past year at this job, did you supervise the work of other employees on a day-to-day basis?**

1. Yes
2. No
8. Refuse
9. Don't know

If Yes go to CH\_Q110

If No/Refuse/Don't know  
and paid worker go to CH\_Q125

Otherwise go to CH\_Q150

CH\_Q110: **About how many people did he supervise directly?**

**About how many people did she supervise directly?**

**About how many people did you supervise directly?**

INTERVIEWER: Probe for an estimate

Hard range: minimum: 1  
maximum: 995

Soft range: > 60

CH\_Q115: **Did he have an influence on whether a person he supervised received a pay raise or promotion?**

**Did she have an influence on whether a person she supervised received a pay raise or promotion?**

**Did you have an influence on whether a person you supervised received a pay raise or promotion?**

- 1. Yes
- 2. No
- 8. Refuse
- 9. Don't know

CH\_Q120: **Was he directly responsible for deciding the work to be done by the people he supervised?**

**Was she directly responsible for deciding the work to be done by the people she supervised?**

**Were you directly responsible for deciding the work to be done by the people you supervised?**

- 1. Yes
- 2. No
- 8. Refuse
- 9. Don't know

If paid worker            go to CH\_Q125  
Otherwise                go to CH\_Q150

CH\_Q125: **In the past year at this job, did he make decisions about budgets or staffing?**

**In the past year at this job, did she make decisions about budgets or staffing?**

**In the past year at this job, did you make decisions about budgets or staffing?**

- 1. Yes
- 2. No
- 8. Refuse
- 9. Don't know

CH\_Q130: **Was his work with [employer] managerial?**

**Was her work with [employer] managerial?**

**Was your work with [employer] managerial?**

1. Yes
2. No
8. Refuse
9. Don't know

If Yes go to CH\_Q135  
If No/Refuse/Don't know go to CH\_Q140

CH\_Q135: **Would his work be best described as top, upper, middle or lower management?**

**Would her work be best described as top, upper, middle or lower management?**

**Would your work be best described as top, upper, middle or lower management?**

1. Top management
2. Upper management
3. Middle management
4. Lower management
8. Refuse
9. Don't know

CH\_Q140: **Which of the following best describes his work schedule with [employer] [when this job ended] [at the end of reference year]?**

**Which of the following best describes her work schedule with [employer] [when this job ended] [at the end of reference year]?**

**Which of the following best describes your work schedule with [employer] [when this job ended] [at the end of reference year]?**

01. **A regular daytime schedule** go to CH\_Q150
02. **A regular evening shift** go to CH\_Q150
03. **A regular night or graveyard shift** go to CH\_Q150
04. **A rotating shift (changes from days to evenings to nights)** go to CH\_Q150
05. **A split shift (two distinct periods each day)** go to CH\_Q150
06. **On call** go to CH\_Q145



- |                                  |                |
|----------------------------------|----------------|
| 07. <b>An irregular schedule</b> | go to CH_Q145  |
| 08. Other (specify)              | go to CH_Q140S |
| 98. Refuse                       | go to CH_Q150  |
| 99. Don't know                   | go to CH_Q150  |

CH\_Q140S INTERVIEWER: Specify

Maximum: 80 bytes

go to CH\_Q150

CH\_Q145: **What was the main reason that he worked this schedule?**

**What was the main reason that she worked this schedule?**

**What was the main reason that you worked this schedule?**

01. Own illness or disability
02. Caring for own children
03. Caring for elder relatives(s)
04. Other personal or family responsibilities
05. Going to school
06. Could only find this type of work
07. Did not want a regular schedule
08. Requirement of the job/no choice
09. Earn more money
10. Other (specify)
98. Refuse
99. Don't know

If answered "Other"	go to CH_Q145S
Otherwise	go to CH_Q150

CH\_Q145S INTERVIEWER: Specify

Maximum: 80 bytes

go to CH\_Q150

CH\_Q150: **At this job, did he usually work every week of the month?**

**At this job, did she usually work every week of the month?**

**At this job, did you usually work every week of the month?**

1. Yes
2. No
8. Refuse
9. Don't know

If Yes/Refuse/Don't know if paid worker, go to CH\_Q160;  
if self employed or working in a family  
business without pay, go to CH\_Q165

If No go to CH\_Q155

CH\_Q155: **How many weeks did he usually work each month?**

**How many weeks did she usually work each month?**

**How many weeks did you usually work each month?**

If paid worker go to CH\_Q160  
If self-employed or working in  
a family business without pay go to CH\_Q165

Hard range: minimum: 1  
maximum: 3

CH\_Q160: **How many hours per week did he usually get paid?**

**How many hours per week did she usually get paid?**

**How many hours per week did you usually get paid?**

INTERVIEWER: If the hours/week vary, ask for the average  
over the last 4 weeks worked

If total is < than 30 hours go to CH\_Q170  
If total is > than 29 hours/Refuse/Don't know go to CH\_Q175

Hard range: minimum: 1.00  
maximum: 168.00

Soft range: < 5 and > 60

CH\_Q165: **How many hours per week did he usually work?**

**How many hours per week did she usually work?**

**How many hours per week did you usually work?**

INTERVIEWER: If the hours/week vary, ask for the average over the last 4 weeks worked

If total is < than 30 hours go to CH\_Q170

If total is > than 29 hours/Refuse/Don't know go to CH\_Q175

Hard range: minimum: 1.00  
maximum: 168.00

Soft range: < 5 and > 60

CH\_Q170: **What was the main reason he usually worked less than 30 hours per week?**

**What was the main reason she usually worked less than 30 hours per week?**

**What was the main reason you usually worked less than 30 hours per week?**

01. Own illness or disability
02. Caring for children
03. Caring for elder relative(s)
04. Other personal or family responsibilities
05. Going to school
06. Could only find part-time work
07. Did not want full-time work
08. Full-time work under 30 hours per week
09. Other (specify)
98. Refuse
99. Don't know

If answered "Other" go to CH\_Q170S

Otherwise go to CH\_Q175

CH\_Q170S INTERVIEWER: Specify

Maximum: 80 bytes

go to CH\_Q175

CH\_Q175: **Did he regularly work any of his scheduled hours at home?**

**Did she regularly work any of her scheduled hours at home?**

**Did you regularly work any of your scheduled hours at home?**

1. Yes
2. No
8. Refuse
9. Don't know

Yes go to CH\_Q180

No if self-employed or working in a family business without pay, go to CH\_Q210;  
if a paid worker and CH\_Q140 = On call, go to CH\_Q210;  
if a paid worker and CH\_Q140 = Irregular schedule, go to CH\_Q251;  
Otherwise, go to CH\_Q185

Refuse/Don't know go to CH\_Q185

CH\_Q180: **How many hours per week did he usually work at home?**

**How many hours per week did she usually work at home?**

**How many hours per week did you usually work at home?**

Hard range: minimum: 1.00  
maximum: 168.00

Soft range: > 60

If self-employed or working in a family business without pay go to CH\_Q210  
If a paid worker and CH\_Q140 = On call go to CH\_Q210  
If a paid worker and CH\_Q140 = Irregular schedule go to CH\_Q251  
Refuse/Don't know go to CH\_Q185  
Otherwise go to CH\_Q185

CH\_Q185: **Did the number of hours usually worked per week for this employer change in [reference year]?**

1. Yes
2. No
8. Refuse

9. Don't know

If Yes go to CH\_Q190  
Otherwise go to CH\_Q251

CH\_Q190: **In what month was this?**

If months not equal to dates worked go to CH\_E190  
Otherwise go to CH\_Q195

CH\_E190: Check dates. Month in which hours changed is not within start and end dates of job.

go to CH\_Q195

CH\_Q195: **Before this change, did he usually work every week of the month?**

**Before this change, did she usually work every week of the month?**

**Before this change, did you usually work every week of the month?**

1. Yes
2. No
8. Refuse
9. Don't know

If Yes go to CH\_Q205  
Otherwise go to CH\_Q200

CH\_Q200: **How many weeks did he usually work per month?** (before this change)

**How many weeks did she usually work per month?** (before this change)

**How many weeks did you usually work per month?** (before this change)

INTERVIEWER: Probe for an estimate

Hard range: minimum: 1  
maximum: 3

CH\_Q205: **How many hours per week did he usually get paid?** (before this change)

**How many hours per week did she usually get paid?** (before this change)

**How many hours per week did you usually get paid?** (before this change)

INTERVIEWER: Probe for an estimate

Hard range: minimum: 1.00  
maximum: 168.00

Soft range: < 5 and > 60

go to CH\_Q251

CH\_Q210: **Last year, when did he work for [employer]?**

**Last year, when did she work for [employer]?**

**Last year, when did you work for [employer]?**

**1. All months of the year**

Edit on all months of the year:

To select this answer, respondent must have worked from 01/01/reference year to 31/12/reference year; otherwise go to CH\_E210

If paid worker and not the same employer as last year (CH\_Q005 = No) go to CH\_Q251

If paid worker and same employer as last year (CH\_Q005 = Yes) and if Empl.oldwage and Empl.oldwageu > 0 go to CH\_Q240

If paid worker and same employer as last year (CH\_Q005 = Yes) and Empl.oldwage = \$0.00 and Empl.oldwageu = 0 go to CH\_Q245

Otherwise if more employers, go to CH\_C001;  
if no more employers, go to SE\_C001

**2. Some of the months** go to CH\_Q215

3. **None of the months** if more employers, go to CH\_C001  
if no more employers, go to SE\_C001

8./9. Refuse/Don't know

If paid worker and not the same employer as last year  
(CH\_Q005 = No), go to CH\_Q251

If paid worker and same employer as last year (CH\_Q005 =  
Yes) and if Empl.oldwage and Empl.oldwageu > 0, go to  
CH\_Q240

If paid worker and same employer as last year (CH\_Q005 =  
Yes) and Empl.oldwage = \$0.00 and Empl.oldwageu = 0,  
go to CH\_Q245

Otherwise if more employers, go to CH\_C001;  
if no more employers, go to SE\_C001

CH\_E210: Dates worked for this employer are [start date] and [end date],  
therefore you cannot select 'All months of the year'

CH\_Q215: **In which months did he work for [employer]?**

**In which months did she work for [employer]?**

**In which months did you work for [employer]?**

INTERVIEWER: Select all months that apply

- |              |               |
|--------------|---------------|
| 01. January  | 07. July      |
| 02. February | 08. August    |
| 03. March    | 09. September |
| 04. April    | 10. October   |
| 05. May      | 11. November  |
| 06. June     | 12. December  |

If paid worker and not the same employer  
as last year (CH\_Q005 = No) go to CH\_Q251

If paid worker and a new employer  
reported go to CH\_Q251

If paid worker and same employer  
as last year (CH\_Q005 = Yes) go to CH\_Q254

Otherwise if more employers, go to CH\_C001  
if no more employers, go to SE\_C001

Edit: Must be within dates worked for this employer;  
If dates inconsistent with job dates go to CH\_E215

CH\_E215: Check dates. Months specified are not within start and end dates of job.

CH\_Q240: **At the beginning of last year , he said that his wage at this job was \$ [prefill from Empl.oldwage and oldwageu]. Was this correct?**

**At the beginning of last year , she said that her wage at this job was \$ [prefill from Empl.oldwage and oldwageu]. Was this correct?**

**At the beginning of last year, you said that your wage at this job was \$ [prefill from Empl.oldwage and oldwageu]. Was this correct?**

- |    |            |               |
|----|------------|---------------|
| 1. | Yes        | go to CH_Q250 |
| 2. | No         | go to CH_Q245 |
| 8. | Refuse     | go to CH_Q255 |
| 9. | Don't know | go to CH_Q255 |

CH\_Q245: **What was his wage at this job at the beginning of last year?**

**What was her wage at this job at the beginning of last year?**

**What was your wage at this job at the beginning of last year?**

INTERVIEWER: If wage is greater than \$999,995.00, enter 999,995.00

Hard range: minimum: \$ 0.01  
maximum: \$ 999,995.00

Soft range: > \$99,995

Refuse/Don't know go to CH\_Q250  
Otherwise go to CH\_Q246



CH\_Q246: **Is this wage . . .**

01. **Hourly?**
02. **Daily?**
03. **Weekly?**
04. **Bi-weekly?**
05. **Semi-monthly?**
06. **Monthly?**
07. **Yearly?**
08. Other (specify)

Refuse/Don't know                      not permitted for this question

If answered "Other"                      go to CH\_Q246S  
Otherwise                                      go to CH\_Q250

CH\_Q246S: INTERVIEWER:      Specify

Maximum: 80 bytes

go to CH\_Q255

CH\_Q250: **Did his wage at this job change during the year?**

**Did her wage at this job change during the year?**

**Did your wage at this job change during the year?**

1.      Yes                                      go to CH\_Q251
2.      No                                         go to CH\_Q255
8.      Refuse                                    go to CH\_Q260
9.      Don't know                               go to CH\_Q260

CH\_Q251: **What is the easiest way for you to tell us his wage or salary at this job? Would it be:**

**What is the easiest way for you to tell us her wage or salary at this job? Would it be:**

**What is the easiest way for you to tell us your wage or salary at this job? Would it be:**

01. **Hourly?**
02. **Daily?**
03. **Weekly?**
04. **Bi-weekly?**

- 05. **Semi-monthly?**
- 06. **Monthly?**
- 07. **Yearly?**
- 08. **Other (specify)**

Refuse/Don't know                      not permitted for this question

If answered "Other"                      go to CH\_Q251S  
 Otherwise                                      go to CH\_Q252

CH\_Q251S: INTERVIEWER:      Specify

Maximum: 80 bytes

go to CH\_Q255

CH\_Q252: **What was his [prefill of answer from CH\_Q251] wage or salary, before taxes and deductions, [when this job ended] [at the end of reference year]?**

**What was her [prefill of answer from CH\_Q251] wage or salary, before taxes and deductions, [when this job ended] [at the end of reference year]?**

**What was your [prefill of answer from CH\_Q251] wage or salary, before taxes and deductions, [when this job ended] [at the end of reference year]?**

INTERVIEWER:      Before taxes and deductions, including tips and commissions and excluding paid overtime. If wage or salary is greater than \$999,995.00, enter \$999,995.00

Hard range: minimum: \$            0.01  
    maximum: \$ 999995.00

Soft range: > \$99995

If CH_Q251 = Hourly and < \$10	go to CH_Q253
If CH_Q251 = Daily and < \$75	go to CH_Q253
If CH_Q251 = Weekly and < \$375	go to CH_Q253
If CH_Q251 = Bi-weekly and < \$750	go to CH_Q253
If CH_Q251 = Semi-monthly and < \$750	go to CH_Q253
If CH_Q251 = Monthly and < \$1,500	go to CH_Q253
If CH_Q251 = Yearly and < \$18,000	go to CH_Q253

Refuse/Don't know  
Otherwise

go to CH\_Q260  
go to CH\_Q254

CH\_Q253: **Was this the minimum wage?**

1. Yes
2. No
8. Refuse
9. Don't know

CH\_Q254: **Does he usually receive tips and commissions?**

**Does she usually receive tips and commissions?**

**Do you usually receive tips and commissions?**

1. Yes
2. No
8. Refuse
9. Don't know

If CH\_Q251 = "Daily"  
Otherwise

go to CH\_Q255  
go to CH\_Q260

CH\_Q255: **What were his total earnings from this job in [reference year]?**

**What were her total earnings from this job in [reference year]?**

**What were your total earnings from this job in [reference year]?**

INTERVIEWER: If earnings are greater than \$999,995.00  
enter \$999,995.00

Hard range: minimum: \$ 0.01  
maximum: \$ 999995.00

Soft range: > \$99,995

CH\_Q260: **In this job, was he a union member?**

**In this job, was she a union member?**

**In this job, were you a union member?**

1. Yes

- 2. No
- 8. Refuse
- 9. Don't know

If Yes go to CH\_Q270  
 Otherwise go to CH\_Q265

CH\_Q265: **Was he covered by a union contract or collective agreement?**

**Was she covered by a union contract or collective agreement?**

**Were you covered by a union contract or collective agreement?**

- 1. Yes
- 2. No
- 8. Refuse
- 9. Don't know

CH\_Q270: **I would now like to ask you about job benefits that some employers offer. In his job with [employer], did he have an employer pension plan?**

**I would now like to ask you about job benefits that some employers offer. In her job with [employer], did she have an employer pension plan?**

**I would now like to ask you about job benefits that some employers offer. In your job with [employer], did you have an employer pension plan?**

INTERVIEWER: Also called a Registered Pension Plan. Exclude CPP or QPP (Canada/Quebec Pension Plan).

- 1. Yes
- 2. No
- 8. Refuse
- 9. Don't know

If No/Refuse/Don't know go to CH\_Q272  
 Otherwise go to CH\_Q271

CH\_Q271: **Did he contribute to this pension plan, for example, through pay deductions?**

**Did she contribute to this pension plan, for example, through pay deductions?**

**Did you contribute to this pension plan, for example, through pay deductions?**

1. Yes
2. No
8. Refuse
9. Don't know

go to CH\_Q275

CH\_Q272: **In this job, did he participate in a group RRSP?**

**In this job, did she participate in a group RRSP?**

**In this job, did you participate in a group RRSP?**

1. Yes
2. No
8. Refuse
9. Don't know

If Yes go to CH\_Q273  
Otherwise go to CH\_Q275

CH\_Q273: **Did his employer contribute to this group RRSP?**

**Did her employer contribute to this group RRSP?**

**Did your employer contribute to this group RRSP?**

1. Yes
2. No
8. Refuse
9. Don't know

CH\_Q275: **In this job, did his employer offer him any of the following benefits even if he chose not to take them?**

**In this job, did her employer offer her any of the following benefits even if she chose not to take them?**

**In this job, did your employer offer you any of the following benefits even if you chose not to take them?**

INTERVIEWER: Mark all that apply

1. **Medical insurance or health plan in addition to public health insurance coverage**
2. **Dental plan or dental coverage with the health plan**
3. **Life and/or disability insurance plan**
4. **None of the above**
8. Refuse
9. Don't know

CH\_Q277: **Did his employer give him the option of a:**

**Did her employer give her the option of a:**

**Did your employer give you the option of a:**

INTERVIEWER: Mark all that apply

1. **Low-interest loan**
2. **Profit sharing plan**
3. **Stock purchase or Stock option plan**
4. **None of the above**
8. Refuse
9. Don't know

CH\_Q279: **In this job, were there other important benefits available to him as an employee?**

**In this job, were there other important benefits available to her as an employee?**

**In this job, were there other important benefits available to you as an employee?**

1. Yes (specify)
2. No
8. Refuse
9. Don't know

If answered "Yes"                      go to CH\_Q279S  
Otherwise                                      go to CH\_C280

CH\_Q279S: INTERVIEWER: Specify

Maximum: 80 bytes

go to CH\_C280

### Absences

CH\_C280: If job type = 1 or 3 go to CH\_Q280  
If job type = 2 go to CH\_Q285

On call worker if more employers, go to CH\_C001;  
otherwise, go to SE\_C001

CH\_Q280: **Not counting fully paid vacation, was he absent from this job for a period of one week or longer?**

**Not counting fully paid vacation, was she absent from this job for a period of one week or longer?**

**Not counting fully paid vacation, were you absent from this job for a period of one week or longer?**

1. Yes
2. No
8. Refuse
9. Don't know

If yes go to CH\_Q320  
Otherwise if more employers, go to CH\_C001;  
otherwise, go to SE\_C001

CH\_Q285: **Before returning to work for [employer] did he receive any pay from this employer?**

**Before returning to work for [employer] did she receive any pay from this employer?**

**Before returning to work for [employer] did you receive any pay from this employer?**

1. Yes
2. No
8. Refuse
9. Don't know

If Yes go to CH\_Q290  
Otherwise go to CH\_C290

CH\_Q290: **Was that full or partial pay?**

1. Full pay
2. Partial pay
8. Refuse
9. Don't know

go to CH\_C290

CH\_C290: If reas\_absen from Empl.dbf OR Ghostemp.dbf = 09  
(Temporary layoff due to seasonal conditions) go to CH\_Q295  
Otherwise go to CH\_Q305

CH\_Q295: **In [reference year], did he look for another job before returning to work?**

**In [reference year], did she look for another job before returning to work?**

**In [reference year], did you look for another job before returning to work?**

1. Yes
2. No
8. Refuse
9. Don't know

If Yes go to CH\_Q300  
Otherwise go to CH\_Q305

CH\_Q300: **In which months did he look for another job?**

**In which months did she look for another job?**

**In which months did you look for another job?**

INTERVIEWER: Mark all that apply.

Edit: Months should be within start date of job and return date in DA\_Q075;  
If not go to CH\_E300

CH\_E300: Check dates. Months in CH\_Q300 should be before date returned to work in DA\_Q075

Start: date of absence                      End: date of absence



CH\_Q305: **After returning to work for [employer], was he absent from this job for a period of one week or longer, not counting fully paid vacations?**

**After returning to work for [employer], was she absent from this job for a period of one week or longer, not counting fully paid vacations?**

**After returning to work for [employer], were you absent from this job for a period of one week or longer, not counting fully paid vacations?**

1. Yes
2. No
8. Refuse
9. Don't know

If Yes go to CH\_Q310  
If No/Refuse/Don't know and more employers go to CH\_C001  
If no more employers go to SE\_C001

CH\_Q310: **How many times was he absent after returning to work on [return date from DA\_Q075]?**

**How many times was she absent after returning to work on [return date from DA\_Q075]?**

**How many times were you absent after returning to work on [return date from DA\_Q075]?**

Hard range: minimum: 1  
maximum: 52

Soft range: = 1 and > 20

If only once make [last] = blank  
If more than once make [last] = last then go to CH\_Q375

Refuse/Don't know go to CH\_Q315

CH\_Q315: **Would you say it was more than once?**

1. Yes make [last] = last
2. No make [last] = blank

- 8. Refuse
- 9. Don't know

If Yes/No go to CH\_Q375  
 If Refuse/Don't know and more employers go to CH\_C001  
 If no more employers go to SE\_C001

CH\_Q320: **How many times was he absent?**

**How many times was she absent?**

**How many times were you absent?**

Hard range: minimum: 1  
 maximum: 52

Soft range: > 20

If only once, make [first] = a blank go to CH\_Q330  
 Otherwise [first] = first and [last] = last go to CH\_Q330

If Refuse and more employers go to CH\_C001  
 If Refuse and no more employers go to SE\_C001  
 If Don't know go to CH\_Q325

CH\_Q325: **Would you say it was more than once?**

- 1. Yes make [first] = first, [last] = last
- 2. No make [first] = blank
- 8. Refuse
- 9. Don't know

If Yes/No go to CH\_Q330

If Refuse/Don't know and more employers, go to CH\_C001  
 if no more employers, go to SE\_C001

CH\_Q330: **When did his [first] absence begin?**

**When did her [first] absence begin?**

**When did your [first] absence begin?**

Hard range: must be within dates worked for this employer

Interviewer enters day/month/ year                    go to CH\_Q335  
Refuse/Don't know                                        go to CH\_Q335

**CH\_Q335:    When did this absence end?**

Hard range: minimum: 01/01/reference year  
                  maximum: 31/12/reference year

Interviewer enters day/month/year

If start date from CH\_Q330 or end date from  
CH\_Q335 is Refuse/Don't know                    go to CH\_Q340  
Otherwise    go to CH\_Q345

Edit: CH\_Q335 > CH\_Q330; if not                go to CH\_E335  
      CH\_Q335 < DA\_Q090; if not                go to CH\_E336

CH\_E335: Check dates. Date absence ended in CH\_Q335 should be later than  
date absence began [date in CH\_Q330].

CH\_E336: Check dates. Date absence ended in CH\_Q335 should be before  
date job ended [date in DA\_Q090].

**CH\_Q340:    About how many weeks would you say this absence lasted?**

Interviewer enters estimate

Hard range: minimum: 1  
                  maximum: 52

**CH\_Q345:    What was the main reason for this absence?**

01. Own illness or disability
02. Maternity leave (females only)
03. Paternity leave (males only)
04. Caring for own children
05. Caring for elder relative(s)
06. Other personal or family responsibilities
07. School or educational leave
08. Labour dispute
09. Temporary layoff due to seasonal conditions
10. Temporary layoff - non-seasonal
11. Unpaid or partially paid vacation
12. New job to start in the future
13. Other (specify)

- 98. Refuse
- 99. Don't know

If answered "Own illness or disability" go to CH\_Q350  
If answered "Other" go to CH\_Q345S  
Otherwise go to CH\_Q355

CH\_Q345S INTERVIEWER: Specify

Maximum: 80 bytes

go to CH\_Q355

CH\_Q350: **Was this due to a work related illness or injury?**

- 1. Yes
- 2. No
- 8. Refuse
- 9. Don't know

CH\_Q355: **Did he receive any pay from [employer] for this absence?**

**Did she receive any pay from [employer] for this absence?**

**Did you receive any pay from [employer] for this absence?**

- 1. Yes
- 2. No
- 8. Refuse
- 9. Don't know

If Yes go to CH\_Q360

If No/Refuse/Don't know if CH\_Q345 = 09 (seasonal layoff),  
go to CH\_Q365;  
if more than one absence, go to  
CH\_Q375;  
if one absence and more employers,  
go to CH\_C001;  
if no more employers, go to  
SE\_C001

CH\_Q360: **Was that full or partial pay?**

- 1. Full pay
- 2. Partial pay

- 8. Refuse
- 9. Don't know

If CH\_Q345 = 09 (seasonal layoff)                      go to CH\_Q365  
 If more than one absence                                      go to CH\_Q375  
 If one absence and more employers                      go to CH\_C001  
 If no more employers    go to SE\_C001

CH\_Q365: **Did he look for another job during this absence?**

**Did she look for another job during this absence?**

**Did you look for another job during this absence?**

- 1. Yes
- 2. No
- 8. Refuse
- 9. Don't know

If Yes, and    absence start and end dates  
    complete go to CH\_Q370;  
    not complete and more  
    employers go to CH\_C001;  
    no more employers go to  
    SE\_C001

If No/Refuse/Don't know, and                                      more than one absence go to  
    CH\_Q375;  
    one absence and more  
    employers go to CH\_C001;  
    no more employers go to  
    SE\_C001

CH\_Q370: **In which months did he look for another job?**

**In which months did she look for another job?**

**In which months did you look for another job?**

INTERVIEWER:                      Mark all that apply. Months marked should  
    be within dates shown below.

- |              |               |
|--------------|---------------|
| 01. January  | 07. July      |
| 02. February | 08. August    |
| 03. March    | 09. September |
| 04. April    | 10. October   |

- |     |      |     |          |
|-----|------|-----|----------|
| 05. | May  | 11. | November |
| 06. | June | 12. | December |

If dates inconsistent with dates of absence	go to CH_E370
If more than one absence	go to CH_Q375
If one absence and more employers	go to CH_C001
If no more employers	go to SE_C001

Edit: Months in CH\_Q370 must be within months in CH\_Q330 and CH\_Q335;  
If not go to CH\_E370

CH\_E370: Check dates. Months looked for work in CH\_Q370 should be within dates of absence. Go back to CH\_Q330, CH\_Q335 or CH\_Q370 to correct.

Start: date of absence                      End: date of absence

CH\_Q375: **When did his [last] absence from this job in [reference year] begin?**

**When did her [last] absence from this job in [reference year] begin?**

**When did your [last] absence from this job in [reference year] begin?**

Interviewer enters day/month/year

Hard range:	minimum:	if job type = 2 then date must be > date returned to work (DA_Q075)
		if job type = 1 or 3 then the date must >= date in CH_Q335
	maximum:	end date of job from employer roster or 31/12/[reference year]

CH\_Q380: **When did this absence end?**

INTERVIEWER: If absence continued into [current year] enter 31/12/[reference year]

Interviewer enters day/month/ year

Hard range:	minimum:	start date of last absence
	maximum:	end date of job or 31/12/[reference year] if job not ended

If start or end date is Refuse/Don't know      go to CH\_Q385  
Otherwise      go to CH\_Q390

CH\_Q385:    **About how many weeks would you say this absence lasted?**

Interviewer enters estimate

Hard range:    minimum: 1  
   maximum: 52

Refuse/Don't know

CH\_Q390:    **What was the main reason for this [last] absence?**

01.    Own illness or disability
02.    Maternity leave (females only)
03.    Paternity leave (males only)
04.    Caring for own children
05.    Caring for elder relative(s)
06.    Other personal or family responsibilities
07.    School or educational leave
08.    Labour dispute
09.    Temporary layoff due to seasonal conditions
10.    Temporary layoff - non-seasonal
11.    Unpaid or partially paid vacation
12.    New job to start in the future
13.    Other (specify)
98.    Refuse
99.    Don't know

If answered "Own illness or disability"      go to CH\_Q395  
If answered "Other"      go to CH\_Q390S  
Otherwise      go to CH\_Q400

CH\_Q390S    INTERVIEWER:    Specify

Maximum: 80 bytes

go to CH\_Q400

CH\_Q395:    **Was this due to a work related illness or injury?**

1.    Yes
2.    No
8.    Refuse
9.    Don't know

CH\_Q400: **Did he receive any pay from [employer] for this absence?**

**Did she receive any pay from [employer] for this absence?**

**Did you receive any pay from [employer] for this absence?**

1. Yes
2. No
8. Refuse
9. Don't know

If Yes go to CH\_Q405

If No and CH\_Q390 = 09 go to CH\_Q410

Otherwise if more employers, go to CH\_C001;  
if no more employers, go to SE\_C001

CH\_Q405: **Was that full or partial pay?**

1. Full pay
2. Partial pay
8. Refuse
9. Don't know

If CH\_Q390 = 09 go to CH\_Q410

Otherwise if more employers, go to CH\_C001;  
if no more employers, go to SE\_C001

CH\_Q410: **Did he look for another job during this absence?**

**Did she look for another job during this absence?**

**Did you look for another job during this absence?**

1. Yes
2. No
8. Refuse
9. Don't know



If Yes	if absence start and end dates complete go to CH_Q415; if not complete, and more employers go to CH_C001; if not complete, and no more employers go to SE_C001
If No/Refuse/Don't know	if more employers go to CH_C001; if no more employers go to SE_C001

CH\_Q415: **In which months did he look for another job?**

**In which months did she look for another job?**

**In which months did you look for another job?**

INTERVIEWER: Mark all that apply.

Edit: Months in CH\_Q415 must be within months in CH\_Q375 and CH\_Q380;  
If not go to CH\_E415

CH\_E415: Check dates. Months looked for work in CH\_Q415 should be within dates of absence. Go back to CH\_Q375, CH\_Q380 or CH\_Q415 to correct.

<u>Start:</u> date of absence	<u>End:</u> date of absence
To correct	go to CH_Q375, CH_Q380 or CH_Q415
Otherwise	if more employers go to CH_C001; if no more employers go to SE_C001

### 5.3 SE module

SE\_C001: If there are jobless spells and if Slidmem.lookwork =1 (was jobless January 1 [reference year]) and gap started <= Jan 6 of [reference year] go to SE\_Q001  
If a jobless spell identified during current interview go to SE\_Q005  
If there are no jobless spells go to CO\_C001  
If start date or end date of jobless spell = Refuse/Don't know go to CO\_C001

Header: Non working period from \_\_\_\_\_ to \_\_\_\_\_

SE\_Q001: **Based on our interview of a year ago, [respondent] was looking for work around the beginning of January [reference year]. Is this correct?**

**Based on our interview of a year ago, you were looking for work around the beginning of January [reference year]. Is this correct?**

1. Yes
2. No
8. Refuse
9. Don't know

If Yes go to SE\_Q010  
If No/Refuse/Don't know go to SE\_Q005

SE\_Q005: **Did [respondent] look for work at any time between [start date of jobless spell] and [end date of jobless spell]?**

**Did you look for work at any time between [start date of jobless spell] and [end date of jobless spell]?**

1. Yes
2. No
8. Refuse
9. Don't know

If Yes go to SE\_Q010  
If No/Refuse/Don't know go to SE\_Q015

SE\_Q010: **In which months did he look?**

**In which months did she look?**

**In which months did you look?**

1. In all months of jobless spell
2. Specify months
8. Refuse
9. Don't know

If answered “In all months of  
jobless spell”/Refuse/Don't know      if another jobless spell, go to  
SE\_Q005;  
if no more jobless spells, go  
to CO\_C001

Otherwise      go to SE\_N010

SE\_N010:      INTERVIEWER:      Indicate months looked for work. Months  
must be between [start of jobless spell] and  
[end of jobless spell].  
Select from list of months; mark all that  
apply

If another jobless spell      go to SE\_Q005  
If no more jobless spells      go to CO\_C001

Edit:      Months looked for work must be between start and end  
dates of jobless spell.  
If not go SE\_E010

SE\_E010:      Check dates. Months looked for work in SE\_Q010 should be  
within jobless dates in SE\_Q005. Go back to SE\_Q010 to correct.

If another jobless spell      go to SE\_Q005  
If no more jobless spells      go to CO\_C001

SE\_Q015:      **Did he want a job during this period?**

**Did she want a job during this period?**

**Did you want a job during this period?**

1.      Yes
2.      No
8.      Refuse
9.      Don't know

If Yes      go to SE\_Q020

If No/Refuse/Don't know      if more jobless spells, go to SE\_Q005  
if no more jobless spells, go to CO\_C001

SE\_Q020:      **What was the main reason he did not look for work during this  
period?**

**What was the main reason she did not look for work during this period?**

**What was the main reason you did not look for work during this period?**

01. Own illness or disability
02. Caring for own children
03. Caring for elder relative(s)
04. Other personal or family responsibilities
05. Going to school
06. Waiting for recall (to former job)
07. Waiting for replies from employers
08. Believes no work available
09. No reason given
10. Other (specify)
98. Refuse
99. Don't know

If answered "Other" go to SE\_Q020S

Otherwise if another jobless spell, go to SE\_Q005  
if no more jobless spells, go to CO\_C001

SE\_Q020S INTERVIEWER: Specify

Maximum: 80 bytes

If another jobless spell go to SE\_Q005  
If no more jobless spells go to CO\_C001

#### **5.4 CO module**

CO\_C001: If Slidmem.uiflag = 1 (received Employment Insurance benefits in December [previous year]) go to CO\_Q005  
If Slidmem.uiflag = 2 go to CO\_Q010

CO\_Q005: **Based on our interview of a year ago, [respondent] received Employment Insurance benefits in December [previous year]. Is this correct?**

**Based on our interview of a year ago, you received Employment Insurance benefits in December [previous year]. Is this correct?**

1. Yes
2. No
8. Refuse
9. Don't know

CO\_Q010: **Did [respondent] receive any income from Employment Insurance benefits in [reference year]?**

**Did you receive any income from Employment Insurance benefits in [reference year]?**

1. Yes
2. No
8. Refuse
9. Don't know

If Yes go to CO\_Q015  
Otherwise go to CO\_C020

CO\_Q015: **In which months?**

1. All months of the year
2. Specify months
8. Refuse
9. Don't know

If "Specify months" go to CO\_N015  
Otherwise go to CO\_C020

CO\_N015: INTERVIEWER: Indicate months Employment Insurance benefits received

CO\_C020 If Slidmem.workcomp = 1 (received Workers' Compensation benefits in December [previous year]) go to CO\_Q020  
If Slidmem.workcomp = 2 go to CO\_Q025

CO\_Q020: **Based on our interview of a year ago, he received Workers' Compensation benefits in December [previous year]. Is this correct?**

**Based on our interview of a year ago, she received Workers' Compensation benefits in December [previous year]. Is this correct?**

**Based on our interview of a year ago, you received Workers' Compensation benefits in December [previous year]. Is this correct?**

1. Yes
2. No
8. Refuse
9. Don't know

**CO\_Q025: Did he receive any income from Workers' Compensation benefits in [reference year]?**

**Did she receive any income from Workers' Compensation benefits in [reference year]?**

**Did you receive any income from Workers' Compensation benefits in [reference year]?**

1. Yes
2. No
8. Refuse
9. Don't know

If Yes go to CO\_Q030  
Otherwise go to CO\_C035

**CO\_Q030: In which months?**

1. All months of the year
2. Specify months
8. Refuse
9. Don't know

If "Specify months" go to CO\_N030  
Otherwise go to CO\_C035

**CO\_N030: INTERVIEWER: Indicate months Workers' Compensation benefits received**

**CO\_C035: If Slidmem.socass = 1 (received Social Assistance in December [previous year] go to CO\_Q035  
If Slidmem.socass = 2 go to CO\_Q040**

**CO\_Q035: Based on our interview of a year ago, he received Social Assistance or welfare in December [previous year]. Is this correct?**

**Based on our interview of a year ago, she received Social Assistance or welfare in December [previous year]. Is this correct?**

**Based on our interview of a year ago, you received Social Assistance or welfare in December [previous year]. Is this correct?**

1. Yes
2. No
8. Refuse
9. Don't know

**CO\_Q040: Did he receive any income from Social Assistance or welfare in [reference year]?**

**Did she receive any income from Social Assistance or welfare in [reference year]?**

**Did you receive any income from Social Assistance or welfare in [reference year]?**

1. Yes
2. No
8. Refuse
9. Don't know

If Yes go to CO\_Q045  
Otherwise go to SP\_Q001

**CO\_Q045: In which months?**

1. All months of the year
2. Specify months
8. Refuse
9. Don't know

If "Specify months" go to CO\_N045  
Otherwise go to SP\_Q001

CO\_N045: INTERVIEWER: Indicate months Social Assistance received  
go to SP\_Q001

## 5.5 SP module:

SP\_Q001: **In [reference year], did he RECEIVE any support payments from a former spouse or partner? By support payments we mean alimony, separation allowance, or child support.**

**In [reference year], did she RECEIVE any support payments from a former spouse or partner? By support payments we mean alimony, separation allowance, or child support.**

**In [reference year], did you RECEIVE any support payments from a former spouse or partner? By support payments we mean alimony, separation allowance, or child support.**

INTERVIEWER: “Support payments” are covered by an agreement to pay a fixed amount on a regular basis. Exclude all other gifts or transfers of money. Include only support payments actually received.

1. Yes
2. No
8. Refuse
9. Don't know

If Yes	go to SP_Q005
Otherwise	go to SP_Q010

SP\_Q001 to SP\_Q015 Notes:

- Report the total amount: child and spousal
- Exclude payments tied to one specific type of expenditure, such as child care services, medical expenses or education expenses, including trust funds.
- May be paid/received by direct payment to/by the recipient OR through a government agency that garnishees the funds from the payor's paycheck. Include either type.
- If support payments were paid to, or received by, two or more former spouses or partners, add the two together, i.e., treat them as one total set of payments.
- Exclude divorce settlements.

SP\_Q005: **What was the total amount he RECEIVED in support payments in [reference year]?**



**What was the total amount she RECEIVED in support payments in [reference year]?**

**What was the total amount you RECEIVED in support payments in [reference year]?**

Hard range: minimum: \$ 1  
maximum: \$ 99999995

Soft range: = \$1 and < \$99996

SP\_Q010: **In [reference year], did he PAY any support payments to a former spouse or partner?**

**In [reference year], did she PAY any support payments to a former spouse or partner?**

**In [reference year], did you PAY any support payments to a former spouse or partner?**

INTERVIEWER: “Support payments” are covered by an agreement to pay a fixed amount on a regular basis. Exclude all other gifts or transfers of money. Include only support payments actually paid.

1. Yes
2. No
8. Refuse
9. Don't know

If Yes go to SP\_Q015  
Otherwise go to SP\_C005

SP\_Q015: **What was the total amount he PAID in support payments in [reference year]?**

**What was the total amount she PAID in support payments in [reference year]?**

**What was the total amount you PAID in support payments in [reference year]?**

Hard range: minimum: \$ 1  
maximum: \$ 99999995

Soft range: = \$1 and < \$99996

SP\_C005: Person had at least one job during the reference year:  
(DateCntr > 0)

Yes go to SP\_C010  
No go to ED\_C001

SP\_C010: At least one child aged 15 or younger present in household:  
(Kids15Flg = 1)

Yes go to SP\_Q020  
No go to ED\_C001

SP\_Q020: **In [reference year], did he pay for child care, such as day care or babysitting, so that he could work at his paid job(s)?**

**In [reference year], did she pay for child care, such as day care or babysitting, so that she could work at her paid job(s)?**

**In [reference year], did you pay for child care, such as day care or babysitting, so that you could work at your paid job(s)?**

INTERVIEWER: Do not double-count any expenses paid by the household that were already reported for (or by) another household member. Exclude payments to family members living with you.

1. Yes
2. No
8. Refuse
9. Don't know

If Yes go to SP\_Q025  
Otherwise go to SP\_Q040

SP\_Q020 to SP\_Q045 Notes:

- Include day care, other care outside the home, in-home care, and before-or after-school programs.
- Include children's camps.
- Include hours closely connected with being available for work, such as travel time.
- Exclude periods when you were looking for a job but not working at one.
- Include days when school was closed.

SP\_Q025: **What was the total amount he paid for child care in [reference year] so that he could work at his paid job(s)?**

**What was the total amount she paid for child care in [reference year] so that she could work at her paid job(s)?**

**What was the total amount you paid for child care in [reference year] so that you could work at your paid job(s)?**

INTERVIEWER: Do not double-count any expenses paid by the household that were already reported for (or by) another member.

Hard range: minimum: \$ 1  
maximum: \$ 99999995

Soft range: = \$1 and < \$99996

SP\_Q030: **Does this include amounts he paid for child care or programs for children so he could continue to work at his job(s) during school holidays?**

**Does this include amounts she paid for child care or programs for children so she could continue to work at her job(s) during school holidays?**

**Does this include amounts you paid for child care or programs for children so you could continue to work at your job(s) during school holidays?**

INTERVIEWER: Do not double-count any expenses paid by the household that were already reported for (or by) another household member.

1. Yes
2. No
8. Refuse
9. Don't know

If No go to SP\_Q035  
Otherwise go to ED\_C001

SP\_Q035: **What was the additional amount for school holidays?**

INTERVIEWER: Do not double-count any expenses paid by the household that were already reported for (or by) another member.

Hard range: minimum: \$ 1  
maximum: \$ 99999995

Soft range: = \$1 and < \$99996

go to ED\_C001

SP\_Q040: **In [reference year], did he pay for babysitting or programs for children so that he could work at his paid job(s) during school holidays?**

**In [reference year], did she pay for babysitting or programs for children so that she could work at her paid job(s) during school holidays?**

**In [reference year], did you pay for babysitting or programs for children so that you could work at your paid job(s) during school holidays?**

INTERVIEWER: Do not double-count any expenses paid by the household that were already reported for (or by) another member. Exclude payments to family members living with you.

1. Yes
2. No
8. Refuse
9. Don't know

If Yes go to SP\_Q045  
Otherwise go to ED\_C001

SP\_Q045: **How much were those expenses?**

Hard range: minimum: \$ 1  
maximum: \$ 99999995

Soft range: = \$1 and < \$99996

## 5.6 ED module

The education module captures all institutions attended by the respondent during the reference year and all degrees, certificates or diplomas completed. This results in a series of flows for each type of institution attended (ED\_Q020). For example: if a respondent attended high school and university, we would ask ED\_Q025, ED\_Q130, ED\_Q135 and ED\_Q140.

If another attended community college and then a business or commercial school we would ask ED\_Q030 to ED\_Q050.

These flows are approximations, with each (except for high school) ascertaining whether any degree, certificate or diploma was obtained, field of study, program length, and whether studies were full-time, part-time, or both.

If ED\_Q005 = Yes (attended an educational institution in the reference year), and flows for attending all institutions have been completed, ED\_Q150 asks about any other degrees, certificates or diplomas received during the reference year. This identifies situations where a respondent received a degree in the reference year although the program finished the previous year.

Without ED\_Q150, these "degrees" would not be recorded. Similarly, if ED\_Q005 = "No" then ED\_Q185 will also pick up these hidden "degrees", that is degrees or certificates awarded after the year that the respondent attended the institution.

ED\_C001:     If Slidmem.student = 1                     go to ED\_Q001  
              If Slidmem.student = 2                     go to ED\_Q005

ED\_Q001:     **Based on our interview of a year ago, [respondent] was attending a school, college or university in December [previous year]. Is this correct?**

**Based on our interview of a year ago, you were attending a school, college or university in December [previous year]. Is this correct?**

1.     Yes
2.     No
8.     Refuse
9.     Don't know

ED\_Q005:     **Did [respondent] attend a school, college or university in [reference year]?**

**Did you attend a school, college or university in [reference year]?**

INTERVIEWER: Include attendance at a post-secondary institution if the courses taken can be used as recognized credits towards a certificate, diploma or degree. Do not include courses taken for leisure, recreation or personal interest.

1. Yes
2. No
8. Refuse
9. Don't know

If Yes go to ED\_Q010  
Otherwise go to ED\_Q185

ED\_Q010: **In what months?**

1. Regular elementary or high school term  
January to June & September to December go to ED\_Q015
2. Regular post-secondary winter & fall terms  
January to April & September to December go to ED\_Q015
3. Other (specify months) go to ED\_N010
8. Refuse go to ED\_Q015
9. Don't know go to ED\_Q015

ED\_N010: INTERVIEWER: Specify months, mark all that apply.

go to ED\_Q015

ED\_Q015: **Was this full-time, part-time or some of each?**

1. Full-time
2. Part-time
3. Some of each
8. Refuse
9. Don't know

go to ED\_Q020

ED\_Q020: **What type of school did he attend? Was it a(n)**

**What type of school did she attend? Was it a(n)**

**What type of school did you attend? Was it a(n)**

INTERVIEWER: Mark all that apply but select only one response per school, i.e. a place should not be listed twice because it is a trade school, but could also be called a community college.

1. **Elementary or high school**
2. **Community college or institute of applied arts and technology**
3. **Business or commercial school**
4. **Trade or vocational school**
5. **CEGEP**
6. **University**
8. Refuse
9. Don't know

If answered "Elementary or high school" go to ED\_Q025  
Otherwise go to ED\_R027

ED\_Q025: **Did he complete high school in [reference year]?**

**Did she complete high school in [reference year]?**

**Did you complete high school in [reference year]?**

1. Yes
2. No
8. Refuse
9. Don't know

If No go to ED\_Q026  
Otherwise go to ED\_R027

ED\_Q026: **What is the main reason he did not complete high school?**

**What is the main reason she did not complete high school?**

**What is the main reason you did not complete high school?**

01. Still attending school
02. No main reason
03. Bored with school
04. Problems with school work
05. Teacher problems
06. Bad results at school

- 07. Expelled from school
- 08. Skipped classes
- 09. Pregnancy/take care of children
- 10. Marriage
- 11. Lack of time
- 12. Problems at home
- 13. Drug and alcohol problems
- 14. To help at home
- 15. Own illness, disability or accident
- 16. Had to work/financial reasons
- 17. Preferred work to school
- 18. Other reasons
- 98. Refuse
- 99. Don't know

ED\_R027 **The following series of questions relates to graduation from a post-secondary institution. Only include certificates, diplomas or degrees from a recognized institution that resulted in graduation from a program.**

INTERVIEWER: Press <Enter> to continue

go to next of ED\_Q030, Q055, Q080, Q105, Q130 or Q150 depending on answers(s) marked in ED\_Q020

ED\_Q030: **Did he receive any certificates or diplomas from the community college or institute of applied arts & technology in [reference year]?**

**Did she receive any certificates or diplomas from the community college or institute of applied arts & technology in [reference year]?**

**Did you receive any certificates or diplomas from the community college or institute of applied arts & technology in [reference year]?**

INTERVIEWER: Only include certificates, diplomas or degrees from a recognized institution that resulted in graduation from a program. Do not include certificates, diplomas from single courses.

- 1. Yes
- 2. No



- 8. Refuse
- 9. Don't know

If Yes go to ED\_Q035  
 Otherwise go to next of ED\_Q055, Q080, Q105, Q130 or Q150 depending on answer(s) marked in ED\_Q020

ED\_Q035: **What was the major field of study or specialization?**

Maximum: 48 bytes

go to ED\_Q040

ED\_Q040: **What was the main reason for choosing this field of study or specialization?**

- 1. **To prepare for first career**
- 2. **To change career**
- 3. **To improve career**
- 4. **To improve earnings**
- 5. **To improve knowledge**
- 6. **Because of interest in the subject**
- 7. Other (specify)
- 8. Refuse
- 9. Don't know

If answered "Other" go to ED\_Q040S  
 Otherwise go to ED\_Q045

ED\_Q040S INTERVIEWER: Specify

Maximum: 80 bytes

go to ED\_Q045

ED\_Q045: **How long did it take him to complete this program?**

**How long did it take her to complete this program?**

**How long did it take you to complete this program?**

- 1. Answer given in months go to ED\_N045
- 2. Answer given in years go to ED\_N050
- 8. Refuse go to ED\_Q050
- 9. Don't know go to ED\_Q050

ED\_N045: INTERVIEWER: Enter the number of months it took to complete this program

Hard range: minimum: 1  
maximum: 95

go to ED\_Q050

ED\_N050: INTERVIEWER: Enter the number of years it took to complete this program

Hard range: minimum: 1  
maximum: 7

go to ED\_Q050

ED\_Q050: **Was this full-time, part-time or some of each?** (attendance over the length of the program)

1. Full-time
2. Part-time
3. Some of each
8. Refuse
9. Don't know

go to next of ED\_Q055, Q080, Q105, Q130 or Q150 depending on answer(s) marked in ED\_Q020

ED\_Q055: **Did he receive any certificates or diplomas from the business or commercial school in [reference year]?**

**Did she receive any certificates or diplomas from the business or commercial school in [reference year]?**

**Did you receive any certificates or diplomas from the business or commercial school in [reference year]?**

INTERVIEWER: Only include certificates, diplomas or degrees from a recognized institution that resulted in graduation from a program. Do not include certificates, diplomas from single courses.

1. Yes
2. No

- 8. Refuse
- 9. Don't know

If Yes go to ED\_Q060  
 Otherwise go to next of ED\_Q080, Q105, Q130 or Q150  
 depending on answer(s) marked in ED\_Q020

ED\_Q060: **What was the major field of study or specialization?**

Maximum: 48 bytes

go to ED\_Q065

ED\_Q065: **What was the main reason for choosing this field of study or specialization?**

- 1. **To prepare for first career**
- 2. **To change career**
- 3. **To improve career**
- 4. **To improve earnings**
- 5. **To improve knowledge**
- 6. **Because of interest in the subject**
- 7. Other (specify)
- 8. Refuse
- 9. Don't know

If answered "Other" go to ED\_Q065S  
 Otherwise go to ED\_Q070

ED\_Q065S: INTERVIEWER: Specify

Maximum: 80 bytes

go to ED\_Q070

ED\_Q070: **How long did it take him to complete this program?**

**How long did it take her to complete this program?**

**How long did it take you to complete this program?**

- 1. Answer given in months go to ED\_N070
- 2. Answer given in years go to ED\_N075
- 8. Refuse go to ED\_Q075
- 9. Don't know go to ED\_Q075

ED\_N070: INTERVIEWER: Enter the number of months it took to complete this program

Hard range: minimum: 1  
maximum: 95

go to ED\_Q075

ED\_N075: INTERVIEWER: Enter the number of years it took to complete this program

Hard range: minimum: 1  
maximum: 7

go to ED\_Q075

ED\_Q075: **Was this full-time, part-time or some of each?** (attendance over the length of the program)

1. Full-time
2. Part-time
3. Some of each
8. Refuse
9. Don't know

go to next of ED\_Q080, Q105, Q130 or Q150 depending on answer(s) marked in ED\_Q020

ED\_Q080: **Did he receive any certificates or diplomas from the trade or vocational school in [reference year]?**

**Did she receive any certificates or diplomas from the trade or vocational school in [reference year]?**

**Did you receive any certificates or diplomas from the trade or vocational school in [reference year]?**

INTERVIEWER: Only include certificates, diplomas or degrees from a recognized institution that resulted in graduation from a program. Do not include certificates, diplomas from single courses.

1. Yes
2. No

- 8. Refuse
- 9. Don't know

If Yes go to ED\_Q085  
 Otherwise go to next of ED\_Q105, Q130 or Q150 depending on answer(s) marked in ED\_Q020

ED\_Q085: **What was the major field of study or specialization?**

Maximum: 48 bytes

go to ED\_Q090

ED\_Q090: **What was the main reason for choosing this field of study or specialization?**

- 1. To prepare for first career
- 2. To change career
- 3. To improve career
- 4. To improve earnings
- 5. To improve knowledge
- 6. Because of interest in the subject
- 7. Other (specify)
- 8. Refuse
- 9. Don't know

If answered "Other" go to ED\_Q090S  
 Otherwise go to ED\_Q095

ED\_Q090S INTERVIEWER: Specify

Maximum: 80 bytes

go to ED\_Q095

ED\_Q095: **How long did it take him to complete this program?**

**How long did it take her to complete this program?**

**How long did it take you to complete this program?**

- 1. Answer given in months go to ED\_N095
- 2. Answer given in years go to ED\_N100
- 8. Refuse go to ED\_Q100
- 9. Don't know go to ED\_Q100

ED\_N095: INTERVIEWER: Enter the number of months it took to complete this program

Hard range: minimum: 1  
maximum: 95

go to ED\_Q100

ED\_N100: INTERVIEWER: Enter the number of years it took to complete this program

Hard range: minimum: 1  
maximum: 7

go to ED\_Q100

ED\_Q100: **Was this full-time, part-time or some of each?** (attendance over the length of the program)

1. Full-time
2. Part-time
3. Some of each
8. Refuse
9. Don't know

go to next of ED\_Q105, Q130 or Q150 depending on answer(s) marked in ED\_Q020

ED\_Q105: **Did he receive any certificates or diplomas from the CEGEP in [reference year]?**

**Did she receive any certificates or diplomas from the CEGEP in [reference year]?**

**Did you receive any certificates or diplomas from the CEGEP in [reference year]?**

INTERVIEWER: Only include certificates, diplomas or degrees from a recognized institution that resulted in graduation from a program. Do not include certificates, diplomas from single courses.

1. Yes
2. No

- 8. Refuse
- 9. Don't know

If Yes go to ED\_Q110  
 Otherwise go to next of ED\_Q130 or Q150 depending on answer(s) marked in ED\_Q020

ED\_Q110: **What was the major field of study or specialization?**

Maximum: 48 bytes

go to ED\_Q115

ED\_Q115: **What was the main reason for choosing this field of study or specialization?**

- 1. **To prepare for first career**
- 2. **To change career**
- 3. **To improve career**
- 4. **To improve earnings**
- 5. **To improve knowledge**
- 6. **Because of interest in the subject**
- 7. Other (specify)
- 8. Refuse
- 9. Don't know

If answered "Other" go to ED\_Q115S  
 Otherwise go to ED\_Q120

ED\_Q115S INTERVIEWER: Specify

Maximum: 80 bytes

go to ED\_Q120

ED\_Q120: **How long did it take him to complete this program?**

**How long did it take her to complete this program?**

**How long did it take you to complete this program?**

- 1. Answer given in months go to ED\_N120
- 2. Answer given in years go to ED\_N125
- 8. Refuse go to ED\_Q125
- 9. Don't know go to ED\_Q125

ED\_N120: INTERVIEWER: Enter the number of months it took to complete this program

Hard range: minimum: 1  
maximum: 95

go to ED\_Q125

ED\_N125: INTERVIEWER: Enter the number of years it took to complete this program

Hard range: minimum: 1  
maximum: 7

go to ED\_Q125

ED\_Q125: **Was this full-time, part-time or some of each?** (attendance over the length of the program)

1. Full-time
2. Part-time
3. Some of each
8. Refuse
9. Don't know

go to next of ED\_Q130 or Q150 depending on answer(s) marked in ED\_Q020

ED\_Q130: **Did he receive any degrees, certificates or diplomas from the university in [reference year]?**

**Did she receive any degrees, certificates or diplomas from the university in [reference year]?**

**Did you receive any degrees, certificates or diplomas from the university in [reference year]?**

INTERVIEWER: Only include certificates, diplomas or degrees from a recognized institution that resulted in graduation from a program. Do not include certificates, diplomas from single courses.

1. Yes
2. No



8. Refuse
9. Don't know

If Yes                      go to ED\_Q135  
 Otherwise                  go to ED\_Q150

ED\_Q135: **What degrees, certificates or diplomas did he receive?**

**What degrees, certificates or diplomas did she receive?**

**What degrees, certificates or diplomas did you receive?**

1. University certificate/diploma below bachelor degree
2. Bachelor's degree(s) (e.g. B.A., B.Sc., B.Ed., B.Eng.)
3. University certificate/diploma above bachelor level but below master level
4. First professional degree in law, dentistry, veterinary medicine, optometry
5. Master's degree(s) (e.g. M.A., M.Sc., M.Ed., M.B.A., M.Eng.)
6. Ph.D. degree (e.g. Doctorate, D.Sc., D.Ed.)
8. Refuse
9. Don't know

ED\_Q140: **What was the major field of study or specialization?**

Maximum: 48 bytes

go to ED\_Q145

ED\_Q145: **What was the main reason for choosing this field of study or specialization?**

1. **To prepare for first career**
2. **To change career**
3. **To improve career**
4. **To improve earnings**
5. **To improve knowledge**
6. **Because of interest in the subject**
7. Other (specify)
8. Refuse
9. Don't know

If answered "Other"              go to ED\_Q145S  
 Otherwise                              go to ED\_Q150

ED\_Q145S INTERVIEWER: Specify

Maximum: 80 bytes

go to ED\_Q150

ED\_Q150: **Did he receive any degrees, certificates or diplomas from anywhere else in [reference year]?**

**Did she receive any degrees, certificates or diplomas from anywhere else in [reference year]?**

**Did you receive any degrees, certificates or diplomas from anywhere else in [reference year]?**

INTERVIEWER: Only include certificates, diplomas or degrees from a recognized institution that resulted in graduation from a program. Do not include certificates, diplomas from single courses.

1. Yes
2. No
8. Refuse
9. Don't know

If Yes go to ED\_Q155  
Otherwise go to DI\_C001

ED\_Q155: **From what kind of institution did he receive this diploma?  
Was it a . . .**

**From what kind of institution did she receive this diploma?  
Was it a . . .**

**From what kind of institution did you receive this diploma?  
Was it a . . .**

1. **High school** go to DI\_C001
2. **Community college or institute  
of applied arts and technology** go to ED\_Q165
3. **Business or commercial school** go to ED\_Q165
4. **Trade or vocational school** go to ED\_Q165
5. **CEGEP** go to ED\_Q165
6. **University** go to ED\_Q160

- 8. Refuse go to DI\_C001
- 9. Don't know go to DI\_C001

ED\_Q160: **What degree, certificate or diploma did he receive?**

**What degree, certificate or diploma did she receive?**

**What degree, certificate or diploma did you receive?**

- 1. University certificate/diploma below bachelor degree
- 2. Bachelor's degree(s) (e.g. B.A., B.Sc., B.Ed., B.Eng.)
- 3. University certificate/diploma above bachelor level but below master level
- 4. First professional degree in law, dentistry, veterinary medicine, optometry
- 5. Master's degree(s) (e.g. M.A., M.Sc., M.Ed., M.B.A., M.Eng.)
- 6. Ph.D. degree (e.g. Doctorate, D.Sc., D.Ed.)
- 8. Refuse
- 9. Don't know

ED\_Q165: **What was the major field of study or specialization?**

Maximum: 48 bytes

go to ED\_Q170

ED\_Q170: **What was the main reason for choosing this field of study or specialization?**

- 1. **To prepare for first career**
- 2. **To change career**
- 3. **To improve career**
- 4. **To improve earnings**
- 5. **To improve knowledge**
- 6. **Because of interest in the subject**
- 7. Other (specify)
- 8. Refuse
- 9. Don't know

If answered "Other" go to ED\_Q170S  
 Otherwise go to ED\_Q175

ED\_Q170S INTERVIEWER: Specify

Maximum: 80 bytes

go to ED\_Q175

ED\_Q175: **How long did it take him to complete this program?**

**How long did it take her to complete this program?**

**How long did it take you to complete this program?**

- |    |                        |               |
|----|------------------------|---------------|
| 1. | Answer given in months | go to ED_N175 |
| 2. | Answer given in years  | go to ED_N180 |
| 8. | Refuse                 | go to ED_Q180 |
| 9. | Don't know             | go to ED_Q180 |

ED\_N175: INTERVIEWER: Enter the number of months it took to complete this program

Hard range: minimum: 1  
maximum: 95

go to ED\_Q180

ED\_N180: INTERVIEWER: Enter the number of years it took to complete this program

Hard range: minimum: 1  
maximum: 7

go to ED\_Q180

ED\_Q180: **Was this full-time, part-time or some of each?** (attendance over the length of the program)

1. Full-time
2. Part-time
3. Some of each
8. Refuse
9. Don't know

go to DI\_C001

ED\_Q185: **Did he receive any degrees, certificates or diplomas in [reference year]?**

**Did she receive any degrees, certificates or diplomas in [reference year]?**

**Did you receive any degrees, certificates or diplomas in [reference year]?**

INTERVIEWER: Only include certificates, diplomas or degrees from a recognized institution that resulted in graduation from a program. Do not include certificates, diplomas from single courses.

1. Yes
2. No
8. Refuse
9. Don't know

If Yes go to ED\_Q190  
Otherwise go to DI\_C001

ED\_Q190: **From what kind of institution did he receive these diplomas? Was it a . .**

**From what kind of institution did she receive these diplomas? Was it a . . .**

**From what kind of institution did you receive these diplomas? Was it a . . .**

1. **High school** go to DI\_C001
2. **Community college or institute of applied arts and technology** go to ED\_Q165
3. **Business or commercial school** go to ED\_Q165
4. **Trade or vocational school** go to ED\_Q165
5. **CEGEP** go to ED\_Q165
6. **University** go to ED\_Q160
8. Refuse go to DI\_C001
9. Don't know go to DI\_C001

## 5.7 DI module

DI\_C001: all respondents go to DI\_Q005

DI\_Q005: **Compared to other people his age, how would you describe [respondent's] state of health? Would you say it is . . .**

**Compared to other people her age, how would you describe [respondent's] state of health? Would you say it is . . .**

**Compared to other people your age, how would you describe your state of health? Would you say it is . . .**

1. **Excellent ?**
2. **Very good ?**
3. **Good ?**
4. **Fair ?**
5. **Poor ?**
8. **Refuse**
9. **Don't know**

DI\_Q010: **Would you describe his life as . . .**

**Would you describe her life as . . .**

**Would you describe your life as . . .**

1. **Very stressful?**
2. **Somewhat stressful?**
3. **Not very stressful?**
4. **Not at all stressful?**
5. **No opinion**
8. **Refuse**
9. **Don't know**

go to DI\_Q015

DI\_Q015: **Does he have any difficulty hearing, seeing, communicating, walking, climbing stairs, bending, learning or doing any similar activities ?**

**Does she have any difficulty hearing, seeing, communicating, walking, climbing stairs, bending, learning or doing any similar activities ?**

**Do you have any difficulty hearing, seeing, communicating, walking, climbing stairs, bending, learning or doing any similar activities ?**

- |    |                       |                  |
|----|-----------------------|------------------|
| 1. | <b>Yes, sometimes</b> | set flgdisab = 1 |
| 2. | <b>Yes, often</b>     | set flgdisab = 1 |
| 3. | <b>No</b>             |                  |

- 8. Refuse
- 9. Don't know

go to DI\_Q020

DI\_Q020: **Does a physical condition or mental condition or health problem reduce the amount or the kind of activity he can do at home?**

**Does a physical condition or mental condition or health problem reduce the amount or the kind of activity she can do at home?**

**Does a physical condition or mental condition or health problem reduce the amount or the kind of activity you can do at home?**

- 1. **Yes, sometimes**                      set flgdisab = 1
- 2. **Yes, often**                              set flgdisab = 1
- 3. **No**
- 8. Refuse
- 9. Don't know

DI\_C020: If respondent is 70+                      go to DI\_Q033  
 If respondent is < 70 and respondent worked  
 In reference year (flag: datescncr > 0)                      go to DI\_Q025  
 Otherwise    go to DI\_Q030

DI\_Q025: **Does a physical condition or mental condition or health problem reduce the amount or the kind of activity he can do at work?**

**Does a physical condition or mental condition or health problem reduce the amount or the kind of activity she can do at work?**

**Does a physical condition or mental condition or health problem reduce the amount or the kind of activity you can do at work?**

- 1. **Yes, sometimes**                      set flgdisab = 1
- 2. **Yes, often**                              set flgdisab = 1
- 3. **No**
- 8. Refuse
- 9. Don't know

go to DI\_Q033

DI\_Q030: **Does a physical condition or mental condition or health problem reduce the amount or the kind of activity he can do at a job or business or at school?**

**Does a physical condition or mental condition or health problem reduce the amount or the kind of activity she can do at a job or business or at school?**

**Does a physical condition or mental condition or health problem reduce the amount or the kind of activity you can do at a job or business or at school?**

1. **Yes, sometimes** set flgdisab = 1
2. **Yes, often** set flgdisab = 1
3. **No**
8. Refuse
9. Don't know

go to DI\_Q033

DI\_Q033: **Does a physical condition or mental condition or health problem reduce the amount or the kind of activity he can do in other activities, for example, transportation or leisure?**

**Does a physical condition or mental condition or health problem reduce the amount or the kind of activity she can do in other activities, for example, transportation or leisure?**

**Does a physical condition or mental condition or health problem reduce the amount or the kind of activity you can do in other activities, for example, transportation or leisure?**

1. **Yes, sometimes** set flgdisab = 1
2. **Yes, often** set flgdisab = 1
3. **No**
8. Refuse
9. Don't know

go to DI\_C015

DI\_C015: If flgdisab = 1 go to DI\_Q035  
Otherwise go to EN\_C001

DI\_Q035: **In what year did his condition begin?**



**In what year did her condition begin?**

**In what year did your condition begin?**

INTERVIEWER: Answer should be year the condition started

Hard range: minimum: dob of respondent  
maximum: current year

If respondent is < 70 and respondent worked  
in reference year (flag: datesctr > 0) go to DI\_Q040  
If respondent is 70+ go to EN\_C001  
Otherwise go to DI\_Q065

DI\_Q040: **Does his condition make it difficult for him to change jobs or to get a better job?**

**Does her condition make it difficult for her to change jobs or to get a better job?**

**Does your condition make it difficult for you to change jobs or to get a better job?**

1. Yes
2. No
8. Refuse
9. Don't know

go to DI\_Q045

DI\_Q045: **Was he satisfied with the number of weeks he worked in [reference year]?**

**Was she satisfied with the number of weeks she worked in [reference year]?**

**Were you satisfied with the number of weeks you worked in [reference year]?**

1. Yes go to EN\_C001
2. No go to DI\_Q050
8. Refuse go to DI\_Q050
9. Don't know go to DI\_Q050

DI\_Q050: **In [reference year], would he have preferred to work more or less than he did?**

**In [reference year], would she have preferred to work more or less than she did?**

**In [reference year], would you have preferred to work more or less than you did?**

- |    |            |               |
|----|------------|---------------|
| 1. | More       | go to DI_Q055 |
| 2. | Less       | go to DI_Q060 |
| 8. | Refuse     | go to DI_Q065 |
| 9. | Don't know | go to DI_Q065 |

DI\_Q055: **Was it his condition that prevented him from working more?**

**Was it her condition that prevented her from working more?**

**Was it your condition that prevented you from working more?**

1. Yes
2. No
8. Refuse
9. Don't know

go to EN\_C001

DI\_Q060: **Was it because of his condition that he wanted to work less?**

**Was it because of her condition that she wanted to work less?**

**Was it because of your condition that you wanted to work less?**

1. Yes
2. No
8. Refuse
9. Don't know

go to EN\_C001

DI\_Q065: **Does his condition completely prevent him from working at a job or business or from looking for work?**

**Does her condition completely prevent her from working at a job or business or from looking for work?**

**Does your condition completely prevent you from working at a job or business or from looking for work?**

1. Yes
2. No
8. Refuse
9. Don't know

go to EN\_C001

## 5.8 EN module

EN\_C001:

If Slidmem.taxperm = 1, 4 or 5

go to CAI\_SO

If Slidmem.taxperm = 2 or 0

go to EN\_R001

If Slidmem.taxperm = 3 and Proxysex = nonproxy

go to EN\_Q005

Otherwise

go to EN\_R001

Taxperm = 0 wasn't asked permission

Taxperm = 1 has given permission

Taxperm = 2 has refused permission

Taxperm = 3 does not file a tax return

Taxperm = 4 withdrew permission

Taxperm = 5 refused Income but will do Labour

EN\_R001:

**This survey also collects income information in May.**

**[Respondent] can give us permission to use his tax records or we can interview him in May. If he gives permission he will be contacted only once a year in January.**

**This survey also collects income information in May.**

**[Respondent] can give us permission to use her tax records or we can interview her in May. If she gives permission she will be contacted only once a year in January.**

**This survey also collects income information in May. You can give us permission to use your tax records or we can interview you in May. If you give permission you will be contacted only once a year in January.**

INTERVIEWER: Press <Enter> to continue.

go to EN\_Q010

EN\_Q005: **Based on the information recorded last May you didn't file a tax return last year. Do you expect to file one for [reference year]?**

- |    |                 |               |
|----|-----------------|---------------|
| 1. | Yes             | go to EN_Q010 |
| 2. | No              | go to CAI_SO  |
| 3. | Error last year | go to EN_Q010 |
| 8. | Refuse          | go to CAI_SO  |
| 9. | Don't know      | go to CAI_SO  |

If answered "Yes" or "Error last year" go to EN\_Q010  
If answered "No" set EN\_Q010 to 3 "Does not file a tax return" and go to CAI\_SO  
Otherwise go to CAI\_SO

EN\_Q010: **Does he give Statistics Canada permission to use his tax records for this survey?**

**Does she give Statistics Canada permission to use her tax records for this survey?**

**Do you give Statistics Canada permission to use your tax records for this survey?**

- |    |                            |
|----|----------------------------|
| 1. | Yes                        |
| 2. | No                         |
| 3. | Does not file a tax return |
| 8. | Refuse                     |
| 9. | Don't know                 |

EN\_R015: INTERVIEWER: This is the end of the component. Return to previously answered questions to make any necessary corrections or press <Enter> to continue.