



Catalogue no. 75F0002MIE — No. 003

ISSN: 1707-2840

ISBN: 0-662-43049-2

## Research Paper

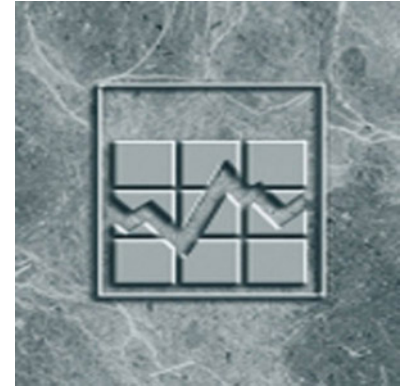
Income Research Paper Series

# Survey of Labour and Income Dynamics (SLID), Labour and income interview questionnaire for reference year 2004

by Andrea Hiltz

Income Statistics Division  
Jean Talon Building, Ottawa, ON K1A 0T6

Telephone: 1 613 951-7355



Statistics  
Canada

Statistique  
Canada

Canada

## How to obtain more information

Specific inquiries about this product and related statistics or services should be directed to: Income Statistics Division, Statistics Canada, Ottawa, Ontario, K1A 0T6 (telephone: (613) 951-7355; (888) 297-7355; [income@statcan.ca](mailto:income@statcan.ca)).

For information on the wide range of data available from Statistics Canada, you can contact us by calling one of our toll-free numbers. You can also contact us by e-mail or by visiting our website.

National inquiries line	1 800 263-1136
National telecommunications device for the hearing impaired	1 800 363-7629
Depository Services Program inquiries	1 800 700-1033
Fax line for Depository Services Program	1 800 889-9734
E-mail inquiries	<a href="mailto:infostats@statcan.ca">infostats@statcan.ca</a>
Website	<a href="http://www.statcan.ca">www.statcan.ca</a>

## Information to access the product

This product, catalogue no. 75F0002MIE, is available for free. To obtain a single issue, visit our website at [www.statcan.ca](http://www.statcan.ca) and select Our Products and Services.

## Standards of service to the public

Statistics Canada is committed to serving its clients in a prompt, reliable and courteous manner and in the official language of their choice. To this end, the Agency has developed standards of service that its employees observe in serving its clients. To obtain a copy of these service standards, please contact Statistics Canada toll free at 1 800 263-1136. The service standards are also published on [www.statcan.ca](http://www.statcan.ca) under About Statistics Canada > Providing services to Canadians.



Statistics Canada  
Income Statistics Division

Income research paper series

# Survey of Labour and Income Dynamics (SLID), Labour and income interview questionnaire for reference year 2004

Published by authority of the Minister responsible for Statistics Canada

© Minister of Industry, 2006

All rights reserved. The content of this publication may be reproduced, in whole or in part, and by any means, without further permission from Statistics Canada, subject to the following conditions: that it is done solely for the purposes of private study, research, criticism, review, newspaper summary, and/or for non-commercial purposes; and that Statistics Canada be fully acknowledged as follows: Source (or "Adapted from", if appropriate): Statistics Canada, name of product, catalogue, volume and issue numbers, reference period and page(s). Otherwise, no part of this publication may be reproduced, stored in a retrieval system or transmitted in any form or by any means, electronic, mechanical, photocopy, for any purposes, without the prior written permission of Licensing Services, Client Services Division, Statistics Canada, Ottawa, Ontario, Canada K1A 0T6.

March 2006

Catalogue no. 75F0002MIE, Vol. 3

Frequency: Occasional

ISSN: 1707-2840

ISBN: 0-662-43049-2

Ottawa

La version française de cette publication est disponible sur demande (n° 75F0002MIF au catalogue).

---

## Note of appreciation

*Canada owes the success of its statistical system to a long-standing partnership between Statistics Canada, the citizens of Canada, its businesses, governments and other institutions. Accurate and timely statistical information could not be produced without their continued cooperation and goodwill.*

## **Executive Summary**

The Survey of Income and Labour Dynamics (SLID) interview is conducted using computer-assisted interviewing (CAI). CAI is paperless interviewing. This document is therefore a written approximation of the CAI interview, or the questionnaire.

In previous years, SLID conducted a Labour interview each January and a separate Income interview in May. In 2005 (reference year 2004) the two interviews were combined and collected in one interview in January.

A labour and income interview is collected for all respondents 16 years of age and over. Respondents have the option of answering income questions during the interview, or of giving Statistics Canada permission to use their income tax records.

In January 2005, data was collected for reference year 2004 from panels 3 and 4. Panel 3, in its sixth and final year, consisted of approximately 17,000 households and panel 4, in its third year, also consisted of approximately 17,000 households.

This document outlines the structure of the January 2005 Labour and Income interview (for the 2004 reference year) including question wording, possible responses, and flows of questions.

## Table of contents

1. Introduction.....	6
2. What's new.....	6
3. How to read this document .....	12
4. Content.....	15
5. Labour Interview.....	20
5.1 DA Module.....	20
5.2 CH Module .....	34
5.3 SE Module .....	78
5.4 CO Module .....	81
5.5 SP Module .....	85
5.6 ED Module .....	90
5.7 DI Module.....	127
6. Income interview .....	132
6.1. Income edits.....	146
6.2. ON-Line income help (F1) .....	147

## **1. Introduction**

Every January, the Survey of Labour and Income Dynamics (SLID) interview is conducted using computer-assisted interviewing (CAI). CAI is paperless interviewing. This document is therefore a written approximation of the CAI interview, or the questionnaire. The CAI process is as follows:

- (a) A question appearing on the computer screen is read aloud to the respondent.
- (b) The respondent's answer is directly entered by the interviewer.
- (c) Based on the answer given, and/or age or other flow criterion, the computer determines the next question to be asked and displays it on the screen.

This research paper presents the content of the 2005 Labour and Income interview<sup>1</sup> (for the 2004 reference year) including question wording, possible responses, and flows of questions.

## **2. What's new**

Both the Labour and Income interviews are collected during the January interview. There will no longer be Income interviews conducted in May.

Questions which have F1 Help available to the interviewers, are preceded with a question mark in this document.

### **PT\_Q001**

This question will appear at the end of the Labour and Income component for each respondent (excluding members of households in the final wave of a panel). It was added to request the respondents' permission to use the provincial driver's licence files, to help find their new address or telephone number in the event that we have difficulty reaching them for future interviews. The information collected will be provided as a tracing source in the tracing component of the survey.

### **New labour questions**

ED\_Q022A, ED\_Q033A, ED\_Q058A, ED\_Q083A, ED\_Q108A, ED\_Q134,  
ED\_Q182

---

1. The household composition, demographic and housing questions are presented in a separate document entitled "Entry exit component interview questionnaire for reference year 2004".

The question asking whether a respondent was a full-time or part-time student, which was removed from the reference year 2002 application, was added back into the application.

### **Modified labour questions**

#### **DA\_C005**

There is a flow change for respondents who answer "No" to EX\_Q001 (new Labour respondents who report that they did not work in the reference year). The jobless spell will be set to 'all year' and the application will flow to DA\_Q020 if they also answered "Yes" to EX\_Q005 (have ever worked) to ask them when they last worked, before skipping to the SE questions.

There is a flow change if a new job is reported and the response to DA\_Q001 is "Working at a job or business or self employed" (the respondent will not be asked if he worked during the reference year, DA\_Q015).

#### **DA\_C035, DA\_C040**

If the response to DA\_N035 or DA\_Q040 is "Don't know" or "Refuse", the name of the employer will be set to "Unknown Employer". In previous collections the employer name was set to "this employer" which was confusing if the respondent had more than one job.

#### **DA\_Q065**

An interviewer note was added to probe for the respondent's best estimate of the year the respondent started working for the employer.

In past years a "Don't know" or "Refuse" response was not allowed and a hard edit popped up. This has been changed so that a "Don't know" or "Refuse" response may be entered and the application will flow to DA\_Q085 (instead of the hard edit DA\_E065, which has been deleted).

#### **DA\_Q090/DA\_N120**

When a valid date is entered in DA\_Q090 and the response to DA\_Q085 is "Don't know" or "Refuse", the start date in DA\_N120 will be set to January 1, reference year.

#### **DA\_Q120**

A wording change was made to the question in French to make it more consistent

with wording in English.

#### CH\_Q011

The response categories have been changed to "Yes" and "No" answers (from "Confirmed" and "Not confirmed") to better match the normal response that a respondent would normally provide. This will eliminate the burden on the interviewer to convert the respondent's reply before choosing the correct response on the screen.

If the response to this question is "No", the application flows to CH\_Q017 (instead of CH\_N015)

#### CH\_Q017 (previously CH\_N015)

This used to be an interviewer note which came up on the screen if a respondent answered "Not confirmed" (or No) to CH\_Q011. The interviewer was responsible for indicating the change in the respondent's class of worker. This is now a question which is read out loud to the respondent, thus making the interviewer's job easier.

#### CH\_Q160 and CH\_Q205

A wording change was made to the question to ensure that the respondent excludes overtime hours from their response.

#### CH\_Q185, CH\_Q205, CH\_Q210, CH\_Q215

Flow changes were made for "No", "Don't know" and "Refuse" responses if the person was a paid worker and had the same employer as the previous year. If they reported a wage last year: and if the interview is non-proxy they will go to CH\_Q240; and if the interview is proxy they will go to CH\_Q251. If they did not report a wage last year they will go to CH\_Q245.

#### CH\_Q245

A wording change was made to the question so that it now uses pre-fills. If they worked for the employer at the beginning of the reference year the question will contain the words "at the beginning". If they started working part way through the year the month specified in CH\_Q215 will be used in the question.



CH\_E370, CH\_E415

These edits were changed to Hard edits so that the months entered in CH\_Q370 and CH\_Q415 can only be within the start and end dates of the absence.

CO\_C001

If the Preliminary interview is asked, the flow logic for the CO (Compensation) questions will depend on the response to EX\_Q005.

SP\_Q025

A flow change was made to skip question SP\_Q030 and go to the Education questions, if response to SP\_Q025 is "Don't know" or "Refuse".

ED\_Q022, ED\_Q033, ED\_Q058, ED\_Q083, ED\_Q108, ED\_Q133, ED\_N175, ED\_N180

These questions now flow to a new full time, part time question (ED\_Q022A, ED\_Q033A, ED\_Q058A, ED\_Q083A, ED\_Q108A, ED\_Q134, ED\_Q182)

ED\_C024, C042, C067, C092, C117, C146, C172, C350

Logic has been added to include DA\_Q030 and DA\_Q040 for determining that respondents worked and thus should be asked if their employer provided support during their course.

DI\_C033, DI\_Q035, DI\_Q045, DI\_Q050, DI\_Q055, DI\_Q060, DI\_Q065

A flow change was made to go to IN\_C001 logic, due to the merger of the Labour and Income interviews.

### **Deleted Labour questions**

DA\_E065

This edit has been deleted. DA\_Q065 has been modified so that a "Don't know" or "Refuse" response is accepted (so the edit is no longer required).

EN\_R001, EN\_Q005, EN\_Q010

The EN questions have been deleted for the Labour and Income merged application. Permission to use tax records will be asked at the beginning of the Income questions.

### **New Income questions**

IN\_Q145

This question, on the amount of income tax paid, was deleted from the questionnaire in the May 2000 collection (for reference year 1999). It has been reinstated in SLID to maintain consistency both with the 2006 Census question and with the information that is obtained from the tax files of persons who give us permission to access their data from the Canada Revenue Agency files.

### **Modified Income questions**

IN\_C001, IN\_Q005, IN\_C002, IN\_C010, IN\_Q190

A flow change was made to go to the new PT\_Q001 question (permission to access driver's licence files).

IN\_Q015

New text was added to the question to ease the flow from the labour interview into the income portion of the interview.

IN\_Q015, IN\_Q020, IN\_Q025, IN\_Q030, IN\_Q035, IN\_Q040, IN\_Q045, IN\_Q050, IN\_Q060, IN\_Q065, IN\_Q070, IN\_Q075, IN\_Q080, IN\_Q085, IN\_Q090, IN\_Q095, IN\_Q100, IN\_Q105, IN\_Q110, IN\_Q115, IN\_Q120, IN\_Q125

The application has been modified so that an amount must be entered for each income source before moving to the next question. If the respondent did not receive income from a particular source, the interviewer will be forced to enter 0 instead of simply hitting the <Enter> key as was allowed in previous years. (Don't know and Refuse are still acceptable responses.) The minimum soft range edits have been modified to accept a 0 response without popping the edits.

IN\_Q015, IN\_Q070, IN\_Q075, IN\_Q080, IN\_C002, IN\_C005, IN\_C010

These questions will now read flags set during the Labour portion of the interview instead of flags sent out on the input sample file.

IN\_Q140

Total income is now the calculated sum of items IN\_Q015 to IN\_Q125 (items IN\_Q130 & IN\_Q135 were deleted).

A flow change was made for "Yes" responses to go to the new question on

income tax paid, IN\_Q145.

A text prefill has been added to the IN\_Q140 question wording, for respondents who reported receiving an amount for support payments in SP\_Q005, which says that the amount is not included in the total income amount calculated in IN\_Q140.

IN\_Q141, IN\_E143

A flow change was made to go to the new question on income tax paid, IN\_Q145.

IN\_C002

Flow changes were made to skip deleted questions due to the merging of the Labour and Income applications.

IN\_Q160, IN\_Q190

The application has been modified so that an amount must be entered before moving to the next question. (Don't know and Refuse are still acceptable responses.)

### **Deleted Income questions**

PR\_N001

The proxy question is asked at the beginning of the Labour questions and has been dropped from the Income questions due to the merging of the two applications.

IN\_Q120

Income from support payments (alimony, child support) is already collected in SP\_Q005 in the Labour module of the questionnaire.

IN\_Q130, IN\_N130, IN\_N130S, IN\_Q135, IN\_N135, IN\_N135S

The extra income values that were being picked up by these questions in the SLID income interview were quite minimal and no longer warrant the extra interview and processing time. Most people who have anything to report for "Other income" just have one item to report. This is also the easiest way to avoid having interviewers enter zero for all three items as a result of the new restriction that they have to put something into the field in order to continue to the next question. Now, they will just have one set of questions on "Other income" (IN\_Q125, IN\_N125, IN\_N125S).

IN\_Q150, IN\_Q155, IN\_Q165, IN\_Q180, IN\_Q185

These questions are asked in the Labour interview and do not need to be repeated in the Income interview as it is now conducted during the same collection period.

### 3. How to read this document

**Question numbers:** For each section, the question numbers refer to the actual numbers used in the software and which appear on an interviewer's computer screen. **Bold** text is read, as worded, by the interviewer. Instructions for the interviewer are preceded by the word, "INTERVIEWER" and are not read out loud to the respondent.

**Naming conventions:** Naming conventions conform to the standards for Statistics Canada social surveys.

Questions with:

- Q (e.g. DA\_Q065) = question
- C (e.g. ED\_C001) = internal check
- N (e.g. ED\_N045) = interviewer instructions
- E (e.g. DA\_E080) = interviewer instruction edit
- ? (e.g. ?DA\_Q001) = F1 help available

**Pre-fill items:** Shown in square brackets [ ] are items specific to each respondent's interview. The software adds the relevant information into the question, making it simply a matter of reading for the interviewer. Pre-fill items include:

[respondent] - This is the first and last name of the household member to whom the questions refer. This is not necessarily the person who is talking to the interviewer.

[fname] - This is the first name of the household member to whom the questions refer. This is not necessarily the person who is talking to the interviewer

[reference year] - This is the year **for which** the information is collected (2004).

[previous reference year] – This is the year prior to the reference year (2003).

[current year] - This is the year **during which** the information is collected (2005).

[employer] - This is the employer referred to in the question. Questions may be asked for a maximum of six employers. In each case, the specific employer's name is placed in the pre-fill item.

[class of worker] - Indicates whether the respondent is a paid worker, self-employed or working in a family business without pay.

[type of work] - This is a short description of the respondent's occupation or type of work performed, at last contact.

[industry] - This is a description of the industry of the employer as provided by the respondent.

[start date] and [end date] - Depending on the question, these refer to either the start and end dates of a specific job, of an unpaid absence, or a jobless spell.

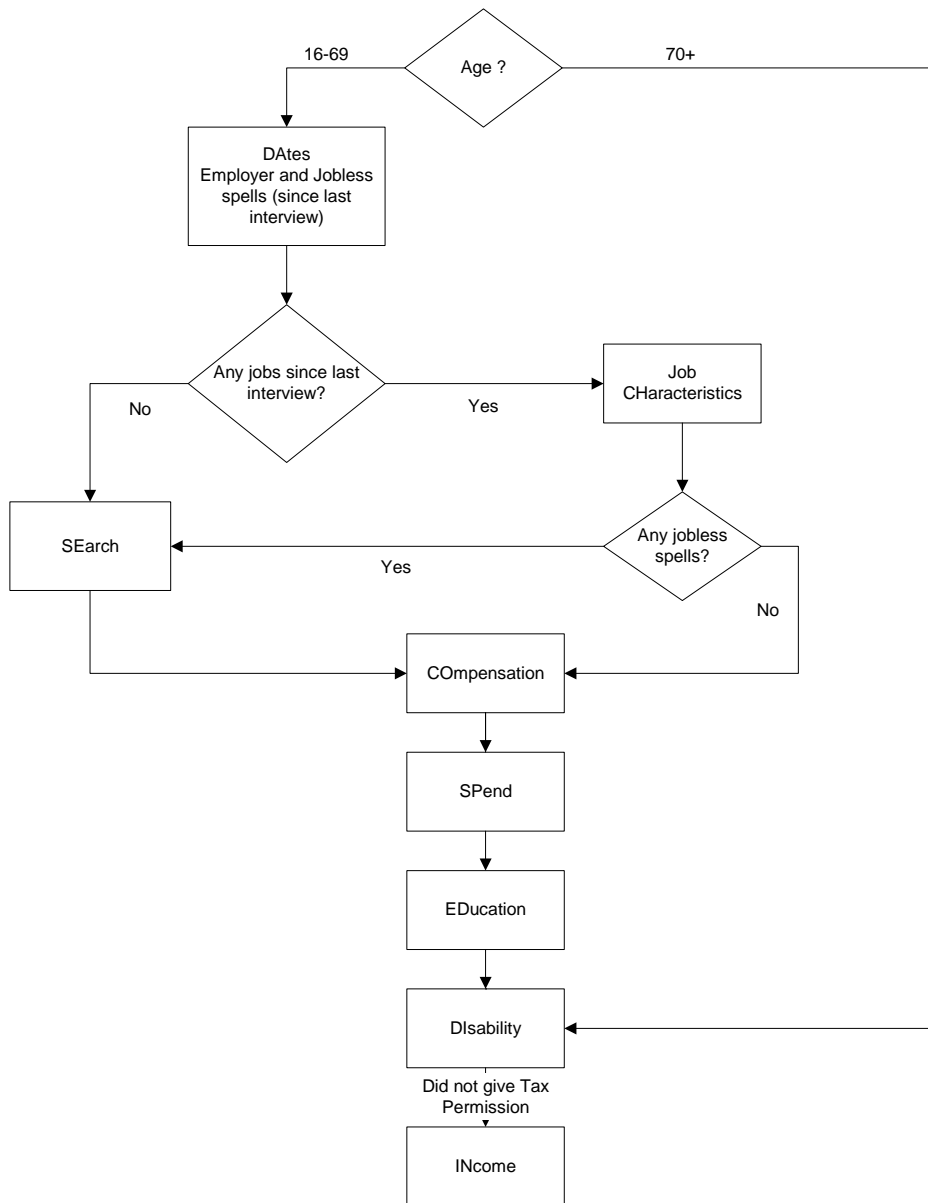
[prefill from Empl.oldwage and Empl.oldwageu] - Wage reported previous year for respondent.

**Ranges:** Hard and soft ranges are specified for some of the questions. The hard range gives the highest and lowest acceptable response values. For example, in CH\_Q110 (number of employees supervised directly) a hard range of 1 - 995 exists. If the interviewer tries to enter a number greater than 995, the system will not accept this.

The soft range specifies an upper limit which, if exceeded, will result in a probe to confirm that the amount entered is correct. If it is correct, the interviewer can enter it as long as it does not exceed the hard range. For example, if the respondent states that the number of people supervised was 65, this exceeds the soft range of > 60. If confirmed as correct, the interviewer can enter this amount as it does not exceed the 995 upper limit of the hard range.

**Dates:** All dates are in DD/MM/YYYY format unless otherwise specified.

## General Flow of the Labour and Income Interview



#### **4. Content**

The general flow of the Labour and Income interview is given in the flowchart on the previous page.

An initial divergence based on age can be seen. Those aged 16-69 are asked the labour series of questions, while those 70 years and over flow to DA\_Q001 (main activity) and then to the Disability (DI) module. For the former, if the respondent worked since the last interview, the characteristics of up to six jobs are asked, followed by identification of jobless spells. If a jobless spell occurred, the respondent is asked the Search (SE) series of questions. These are also asked for respondents who have not worked since the last Labour interview. The Compensation (CO) questions are then asked of all respondents, as are subsequent modules on Spend (SP), Education (ED) and Disability (DI). Income (IN) questions are only asked if the respondent does not give Statistics Canada permission to access their Canada Revenue Agency tax files.

The Labour and Income interview is comprised of eight main modules as outlined in the following table.

**Modules of the Labour and Income survey and major components**

<b>DA</b>	<b>CH</b>	<b>SE</b>	<b>CO</b>	<b>SP</b>	<b>ED</b>	<b>DI</b>	<b>IN</b>
Job Tenure	General Job Characteristics	Jobless Spells	Receipt of Employment Insurance	Receipt of Support Payments	Type of Educational Establishment	Identifies Disabilities/ Activity Limitations	Amounts of income from various sources
Reasons for Leaving Job	Supervisory/ Managerial Responsibilities	Job Search Activities	Receipt of Workers' Compensation	Payment of Support	Months/Weeks/ Hours Attended School	Impact of Condition on Amount and/or the Ability to Work	Amount of employer pension plan contributions
	Work Schedule		Receipt of Social Assistance or Welfare	Payments for Child Care	Information on Any Diplomas, Certificates or Degrees Earned		Amount paid for professional membership dues or malpractice premiums
	Wages & Fringe Benefits				Information on the Most Important Work-related Course Taken		Amount paid in union dues
	Absences from Work for 1 or More Weeks						



DA: Dates -- Employer start and end dates are collected for up to six employers during the year. This module has an employer roster (a list of all employers the person worked for during the year), and a ghost employer roster (a list of former employers reported in previous interviews). Feeding back of employer names from the previous January also occurs in this module. For a person on unpaid absence at the beginning of last January, the absence as well as the employer name is fed back.

Regarding “Don’t know’s” in employer dates: To collect information on an employer, the interviewer must be able to establish the date the person started working for that employer. If the interviewer is able to establish the month the job began, but not the day, the computer will set the day to 01 and the employer will be accepted. Similarly, if the interviewer can establish the month the job ended, but not the day, the computer will set the day to 28. However, if the interviewer cannot get an estimate of the month in which the job started or ended, it is impossible to proceed with that employer, and it is deleted from the roster. If the respondent reports no employers during the past year, the respondent skips to SE.

The following classification of jobs is used in DA:

**Job Type 1** - a job at which the respondent was working on December 31<sup>st</sup> of the previous reference year.

**Job Type 2** - a job at which the respondent was not working on December 31<sup>st</sup> of the previous reference year but to which he/she was attached (i.e. on temporary lay-off or away on an absence of more than a week).

**Job Type 3** - a job not previously identified in the survey, generally one at which the respondent started working during the reference year.

Jobless spells are derived from the dates of employment.

Employment with each employer is characterized as ended or un-ended, referring to whether the respondent was working for the employer at the end of the reference year. If a job type 1 is denied, the job is deleted

without an array of probing questions. For job type 2, one probing question is asked if the job is denied.

- CH: Characteristics – This will be collected for up to six employers per respondent. For job type 1 and 2, information on employer name, and type of work performed is fed back to the respondent. A change in occupation and wages can be recorded, as can one change in work schedule for job types 1 and 2. This allows greater precision in deriving implicit hourly wage rates or total annual earnings from an employer (total annual earnings from all employers will also be collected in May in the income interview). The number of absences of one week or more (except paid vacation), and details on the first and last absences with each employer are also recorded.
- SE: Search -- If there was a jobless spell identified in 'DA' or if the respondent did not work at any time in the year, the flow will be directed to this module. For each jobless spell, there are a series of questions on job search, and the desire for employment. For people who begin the year with a jobless spell, the search status in January is fed back to the respondent only if they were looking for work.
- CO: Compensation – This module asks questions regarding receipt of Employment Insurance, Social Assistance, or Workers' Compensation. This information is collected for everyone, independently of any reported job absences and jobless spells. The information which is collected includes:
- receipt of Employment Insurance, Workers Compensation, and Social Assistance during reference year;
  - months received.
- SP: Spend – This module requests information on support payments, both paid and received. Also, there are questions on child care expenses. The first time SLID collected this type of information was for reference year 1999.
- ED: Education – This module on formal education includes educational activity during the year, and degrees, certificates or diplomas obtained. If

respondents attended more than one type of educational institution, several flows will result providing information also on field of study, program length, and time attended (months, weeks, hours). By asking question ED\_Q150 about other degrees, certificates or diplomas received during the reference year, this identifies situations where a respondent received a degree in the reference year although the program finished the previous year. In this section we have added a few questions on the most important work-related course taken by the respondent.

DI: Disability – This module contains questions concerning disability, which have been modified in conjunction with questions that were asked in the 2001 Census. These disability questions are asked of all respondents. The basic structure of the questions concern disability at home, at work and in other activities, but a distinction is made in the questions asked for those who worked versus those who didn't work in the reference year. No questions are asked about disability at work for respondents aged 70+.

IN: Income – This module asks for the amounts of income received from various sources. Everyone age 16 and over receive these questions unless they give Statistics Canada permission to access their Canada Revenue Agency tax records. Edits are programmed using the information collected in the Labour portion of the survey to remind respondents that they had reported being employed or receiving employment insurance, social assistance or workers' compensation, to ensure that the amounts are entered. Flags are also set during the Labour interview so that amounts are collected where applicable for: employer pension plan contributions; professional membership dues or malpractice insurance premium payments; and union dues.

## 5. Labour Interview

### 5.1 DA Module

If respondent < 16 years old: No Labour interview, interview is complete and appstat = 61. Return to component screen.

If Hhinfo.prelflag = 1 go to DA\_Q001 (member is a joiner, a new panel or a member who turned 16), the proxy question will be asked in the Preliminary interview.

If Hhinfo.prelflag = 2 go to PR\_N001 (previously interviewed respondent), the proxy question will be asked in the Labour interview.

PR\_N001: INTERVIEWER: Select the name of the person who is providing the information. If the person is not on the list select 'Non-household member'.

go to DA\_Q001

Header: first and last name of respondent, industry and class of worker

?DA\_Q001: **I'd like to ask you a few questions about his main activity at the end of [reference year]. Was [fname]'s main activity . . .**

**I'd like to ask you a few questions about her main activity at the end [reference year]. Was [fname]'s main activity . . .**

**I'd like to ask you a few questions about your main activity at the end of [reference year]. Was your main activity . . .**

01. Working at a job or business or self employed?
02. Looking for work?
03. Going to school?
04. Keeping house?
05. Caring for other family members including young children?
06. Retired?
07. Long term illness or disability?
08. Doing volunteer work?
09. No main activity?
10. Other (specify)
98. Refuse
99. Don't know

If answered 10 "Other" go to DA\_Q001S  
If answered 01 "Working" set FlagJobs to 1 and go to  
DA\_C005  
Otherwise go to DA\_C005

DA\_Q001S: INTERVIEWER: Specify

Maximum: 80 bytes

go to DA\_C005

If DA\_Q01 = 01 "Working" and compinfo.emtyp69 <> 1 and compinfo.emtyp69  
<> 2, then set job type to 3 (new job)

DA\_C005: If age > 69 go to DI\_C001  
Otherwise,  
If EX\_Q001 = No set jobless spell to all year and go to  
DA\_C015  
Otherwise,  
If age is 16 - 69 if job type = 1, go to DA\_Q005  
if job type = 2, go to DA\_Q010  
if job type = 3, and if DA\_Q001 = 01 and  
there is a ghost employer on Compinfo.dbf,  
go to DA\_Q030;  
if job type = 3, and if DA\_Q001 = 01 and  
there is no ghost employer on Compinfo.dbf,  
go to DA\_Q040.  
if job type = 3, and DA\_Q001 <> 01, go to  
DA\_Q015

DA\_Q005: **Based on our interview of a year ago, he was working for  
[employer] around the beginning of January [reference year].  
Is this correct?**

**Based on our interview of a year ago, she was working for  
[employer] around the beginning of January [reference year].  
Is this correct?**

**Based on our interview of a year ago, you were working for  
[employer] around the beginning of January [reference year].  
Is this correct?**

INTERVIEWER: Any spelling errors or clarifications can be  
made later in CH\_Q010

1. Yes (set FlagJobs to 1)

- 2. No
- 8. Refuse
- 9. Don't know

If Yes                      if Compinfo.prflg59 = 1 go to DA\_C045;  
if Compinfo.prflg59 = 2 go to DA\_Q085 and  
set start date to 01/01/[reference year]

If No/Refuse/Don't know      go to DA\_E005

DA\_E005:      If the name has changed but the employer is the same, this is NOT  
a new employer. Return to DA\_Q005 and change the response to  
'Yes'.  
Otherwise, respondent is denying working for this employer in  
[reference year]. Press 'D' to delete from the Employer Roster.

go to DA\_C010

DA\_C010:      If more job type 1 or 2 to be confirmed go to DA\_C120  
unless all employers have been denied then go to DA\_Q015.

Header information:      Industry, class of worker

?DA\_Q010:      **Based on our interview of a year ago, he had a job with  
[employer], but he was not at work around the beginning of  
January [reference year]. Is this correct?** (any spelling errors  
or clarifications can be made later)

**Based on our interview of a year ago, she had a job with  
[employer], but she was not at work around the beginning of  
January [reference year]. Is this correct?** (any spelling errors  
or clarifications can be made later)

**Based on our interview of a year ago, you had a job with  
[employer], but you were not at work around the beginning of  
January [reference year]. Is this correct?** (any spelling errors  
or clarifications can be made later)

[Screen shows date absence began and reason for absence]

- 1. Yes    (set FlagJobs to 1)
- 2. No
- 8. Refuse
- 9. Don't know

If Yes    go to DA\_Q070

If No/Refuse/Don't know go to DA\_Q025

?DA\_Q015: **Did he work at a job or business in [reference year]?**

**Did she work at a job or business in [reference year]?**

**Did you work at a job or business in [reference year]?**

1. Yes (set FlagJobs to 1)
2. No
8. Refuse
9. Don't know

If Yes and: if there is a ghost employer on  
Compinfo.dbf go to DA\_Q030;  
if no ghost employer, go to  
DA\_Q040

If No/Refuse/Don't know if Compinfo.prlflg59 = 1 go to  
DA\_C015;  
if Compinfo.prlflg59 = 2 go to  
SE\_C001

DA\_C015: If EX\_Q005 = No (never worked at a job or business) set jobless  
spell to all year and go to SE\_C001

If EX\_Q005 = Yes (has worked at a job or business) or  
Refuse/Don't know go to DA\_Q020

DA\_Q020: **When did he last work at a job or business?**

**When did she last work at a job or business?**

**When did you last work at a job or business?**

INTERVIEWER: If respondent reports working during  
[reference year] go back and change  
DA\_Q015 to 'Yes'.

Interviewer enters day/month/year

Hard range: minimum: [reference year] minus ([age] minus 10)  
(10 years old)  
maximum: [reference year] minus 1

go to SE\_C001

DA\_Q025: **Was he still working for [employer] around the beginning of January [reference year]?**

**Was she still working for [employer] around the beginning of January [reference year]?**

**Were you still working for [employer] around the beginning of January [reference year]?**

1. Yes
2. No
8. Refuse
9. Don't know

If Yes    set job type to 1;  
if Compinfo.prlflg59 = 1 go to  
DA\_C045  
if Compinfo.prlflg59 = 2 go to  
DA\_Q085

If No/Refuse/Don't know    go to DA\_E025

DA\_E025: Respondent is denying working for this employer in [reference year].  
Press 'D' to delete from the Employer Roster.

If anything other than a lower or upper case 'D' is entered, the following message will appear: You must enter "D" to delete the employer.

go to DA\_C120

?DA\_Q030: **For whom did he work?** (name of business, government department or person)

**For whom did she work?** (name of business, government department or person)

**For whom did you work?** (name of business, government department or person)

INTERVIEWER:    To select a ghost employer enter the number next to the employer name. To add a new employer, select 'New employer'.

go to DA\_C030



- DA\_C030: If ghost employer reported, set ghost job type to 3 and go to DA\_Q055.  
If new employer reported, set job type to 3 and go to DA\_N035.
- DA\_N035: INTERVIEWER: Enter name of employer (name of business, government department or person).
- Maximum: 50 bytes
- go to DA\_C035
- DA\_C035: If valid answer, set employer name.  
If Refuse/Don't know set employer name to "Unknown Employer".
- go to DA\_C045
- DA\_Q040: **For whom did he work?**
- For whom did she work?**
- For whom did you work?**
- INTERVIEWER: Probe for name of business, government department or person.
- Maximum: 50 bytes
- go to DA\_C040
- DA\_C040: Set job type to 3.  
If valid answer, set employer name.  
If Refuse/Don't know, set employer name to "Unknown Employer".
- go to DA\_C045
- ?DA\_C045: If Compinfo.prlflg59 = 1 go to DA\_Q045 (new panel, joiner January or May)  
If Compinfo.prlflg59 = 2 go to DA\_Q050 (previously interviewed respondent)
- DA\_Q045: **When did he start working for [employer]?**
- When did she start working for [employer]?**

**When did you start working for [employer]?**

Interviewer enters day/month/year

Hard range: minimum: [reference year] minus ([age] minus 10)  
(10 years old)  
maximum: 31/12/[reference year]

If Refuse/Don't know in day or month set to 01  
If Refuse/Don't know in year go to DA\_E045  
Otherwise go to DA\_C046

DA\_E045: A value must be entered in year. Go back and enter a value.

DA\_C046: If the date reported in DA\_Q045 is prior to the reference year, then set the start date on the Employer Roster to January 1<sup>st</sup> of reference year;

Otherwise set start date to entry in DA\_Q045. This date is used to calculate jobless spells.

go to DA\_Q060

DA\_Q050: **When did he start working for [employer]?**

**When did she start working for [employer]?**

**When did you start working for [employer]?**

Interviewer enters day/month/year

If the date reported in DA\_Q050 is prior to the reference year, then set the start date on the Employer Roster to January 1<sup>st</sup> of reference year;

Otherwise set start date to entry in DA\_Q050. This date is used to calculate spells.

Hard range: minimum: [reference year] minus ([age] minus 10)  
(10 yrs old)  
maximum: 31/12/[reference year]

Soft range: minimum: 01/01/[reference year]  
maximum: 31/12/[reference year]

If Refuse/Don't know in day and/  
or month set to 01



?DA\_Q065: **When did he first start working for [employer]?**

**When did she first start working for [employer]?**

**When did you first start working for [employer]?**

INTERVIEWER: If exact year is not known, probe for best estimate.

Interviewer enters month/year

Hard range: minimum: [reference year] minus ([age] minus 10)  
(10 yrs old)  
maximum: answer in DA\_Q045/DA\_Q050

If Refuse/Don't know in month	set to 01
If Refuse/Don't know in year	go to DA_Q085
Otherwise	go to DA_Q085

DA\_Q070: **Did he return to work for [employer] in [reference year]?**

**Did she return to work for [employer] in [reference year]?**

**Did you return to work for [employer] in [reference year]?**

1. Yes
2. No
8. Refuse
9. Don't know

Yes	go to DA_Q075
No	if jobtype = 2 and DA_Q010 = Yes, fill startdate with 01/01/[Refyear] and go to DA_Q076; otherwise, go to DA_Q076
If Refuse/Don't know	go to DA_C120

DA\_Q075: **When did he return to work for [employer]?**

**When did she return to work for [employer]?**

**When did you return to work for [employer]?**

Interviewer enters day/month/year

Hard range: minimum: 01/01/[reference year]

maximum: 31/12/[reference year]

If Refuse/Don't know in day or month	set to 01
If Refuse/Don't know in year	go to DA_E075
If Compinfo.prlflg59 = 1	go to DA_C045
Otherwise	go to DA_Q085

DA\_E075: A value must be entered in year. Go back and enter a value.

DA\_Q076: **Does he expect to return to work for [employer]?**

**Does she expect to return to work for [employer]?**

**Do you expect to return to work for [employer]?**

1. Yes
2. No
8. Refuse
9. Don't know

If Yes	go to DA_C120 and set end date to 31/12/[reference year]
If No	go to DA_Q080
Otherwise	go to DA_C120

DA\_Q080: **When did he realize that he would not be returning to [employer]?**

**When did she realize that she would not be returning to [employer]?**

**When did you realize that you would not be returning to [employer]?**

Interviewer enters day/month/year

Hard range: minimum: 01/01/[reference year]  
maximum: 31/12/[reference year]

If Refuse/Don't know in day or month	set to 01
If Refuse/Don't know in year	go to DA_E080
Otherwise	go to DA_E081

DA\_E080: A value must be entered in year. Go back and enter a value.

DA\_E081: Respondent did not work for this employer in [reference year].

Press 'D' to delete from the Employer Roster.

go to DA\_Q100

DA\_Q085: **Did he still have a job with [employer] at the beginning of [current year]?**

**Did she still have a job with [employer] at the beginning of [current year]?**

**Did you still have a job with [employer] at the beginning of [current year]?**

1. Yes
2. No
8. Refuse
9. Don't know

If Yes go to DA\_C120 and set end date to 31/12/[reference year]

If No/Refuse/Don't know go to DA\_Q090

?DA\_Q090: **When did his job with [employer] end?**

**When did her job with [employer] end?**

**When did your job with [employer] end?**

Interviewer enters day/month/year

Hard range: minimum: if date in DA\_Q050 or date in DA\_Q045 < [reference year] set minimum to 01/01/[reference year], otherwise minimum = DA\_Q045 or DA\_Q050  
maximum: 31/12/[reference year]

If date entered is < date in DA\_Q045 or DA\_Q050 the following message pops up: Date job ended is before date job started.

If (date entered is < 01/01/[reference year]) and (DA\_Q005 = Yes), the following hard edit message pops up: Confirm date. Date job ended cannot be before January 1, [reference year]. If date is correct, go back to DA\_Q005 and change response to "No".

If Refuse/Don't know in day set to 01  
If Refuse/Don't know in month or year go to DA\_N095

Otherwise go to DA\_Q095

If a valid date is entered in DA\_Q090 and DA\_Q085 = DK/R, set start date in DA\_N120 to January 1, reference year.

DA\_N095: Check dates. Month and year when job ended is necessary to continue this interview. Probe for dates; if not available press 'D' to delete employer from Employer Roster. Press Up arrow to go back.

go to DA\_C120

DA\_Q095: **Did he leave this job or did the job come to an end?**

**Did she leave this job or did the job come to an end?**

**Did you leave this job or did the job come to an end?**

- |    |                    |               |
|----|--------------------|---------------|
| 1. | Left job           | go to DA_Q100 |
| 2. | Job came to an end | go to DA_Q115 |
| 3. | Both               | go to DA_Q100 |
| 8. | Refuse             | go to DA_C120 |
| 9. | Don't know         | go to DA_C120 |

DA\_Q100: **What was his main reason for leaving this job?**

**What was her main reason for leaving this job?**

**What was your main reason for leaving this job?**

01. Own illness or disability
02. Caring for own children
03. Caring for elder relative(s)
04. Other personal or family responsibilities
05. School
06. Found new job
07. Moved to a new residence
08. Dissatisfied with job
09. Retirement
10. To concentrate on other job
11. Contract ended
12. Other (specify)
98. Refuse
99. Don't know

If answered "Own illness or disability" go to DA\_Q105

If answered "Dissatisfied with job"            go to DA\_Q110  
If answered "Other"                                go to DA\_Q100S  
Otherwise    go to DA\_C120

DA\_Q100S: INTERVIEWER:    Specify

Maximum: 80 bytes

go to DA\_C120

DA\_Q105:    **Was this due to a work related illness or injury?**

1.    Yes
2.    No
8.    Refuse
9.    Don't know

go to DA\_C120

DA\_Q110:    INTERVIEWER:    If necessary ask:

**Can you be more specific about why he was not satisfied with this job?**

**Can you be more specific about why she was not satisfied with this job?**

**Can you be more specific about why you were not satisfied with this job?**

01.    Poor pay
02.    Not enough hours of work
03.    Too many hours of work
04.    Poor physical conditions (bad ventilation, too noisy, etc.)
05.    Sexual harassment
06.    Personal conflict with employer / other employees
07.    Work too stressful
08.    Other (specify)
98.    Refuse
99.    Don't know

If answered "Other"                                go to DA\_Q110S  
Otherwise    go to DA\_C120

DA\_Q110S: INTERVIEWER:    Specify



Maximum: 80 bytes

go to DA\_C120

DA\_Q115: **What was the main reason why this job came to an end?**

01. Company moved
02. Company went out of business
03. Seasonal nature of work
04. Layoff / business slowdown (not caused by seasonal conditions)
05. Labour dispute
06. Dismissal by employer
07. Temporary job / contract ended
08. Other (specify)
98. Refuse
99. Don't know

If answered "Other" go to DA\_Q115S

Otherwise go to DA\_C120

DA\_Q115S: INTERVIEWER: Specify

Maximum: 80 bytes

go to DA\_C120

DA\_C120: If there is another job type 1  
to be confirmed go to DA\_Q005

If there is another job type 2  
to be confirmed go to DA\_Q010

If DA\_Q010 = Yes and DA\_Q070 = Refuse  
or Don't know and there are no more  
employers go to SE\_C001

If 6 employers go to DA\_N120

Otherwise go to DA\_Q120

DA\_Q120: **Did he work for any other employers, including working for himself, in [reference year]?**

**Did she work for any other employers, including working for herself, in [reference year]?**

**Did you work for any other employers, including working for yourself, in [reference year]?**

1. Yes
2. No
8. Refuse
9. Don't know

If Yes go to DA\_Q040 and repeat for next employer;  
if there is a ghost employer go to DA\_Q030 and repeat for next employer.

If No/Refuse/Don't know go to DA\_N120

DA\_N120: INTERVIEWER: Review the information. If changes are necessary use <PgUp> to go back. No further information is needed for deleted employers marked with an 'X'. Press <Enter> to continue.

Header:            Employer Name            Start Date            End Date

If respondent did not work in [reference year] go to SE\_C001  
If respondent worked in [reference year] go to CH\_C001

## 5.2 CH Module

CH\_C001: If DA\_Q076[employer] = Yes go to CH\_R001  
Otherwise if job type = 3, go to CH\_Q001;  
if job type = 1 or 2, go to CH\_Q005

Header:            Employer name, start date and end date

CH\_R001: **You told us that [respondent] was absent from his job with [employer] for all of [reference year]. I would now like to ask you some questions about this absence.**

**You told us that [respondent] was absent from her job with [employer] for all of [reference year]. I would now like to ask you some questions about this absence.**

**You told us that you were absent from your job with [employer] for all of [reference year]. I would now like to ask you some questions about this absence.**

INTERVIEWER: Press <Enter> to continue  
If respondent denies being absent for all of [reference year], enter Don't know or Refuse

If response is <Enter> go to CH\_Q345  
If response is Don't know or Refuse if more employers, go to CH\_C001;  
if no more employers, go to SE\_C001

?CH\_Q001: **I would like to ask you a few questions about [respondent's] work with [employer]. What kind of business, industry or service was this?** (e.g. federal government, canning industry, forestry services)

**I would like to ask you a few questions about your work with [employer]. What kind of business, industry or service was this?** (e.g. federal government, canning industry, forestry services)

Maximum: 50 bytes

go to CH\_Q015

CH\_Q005: **I would like to ask you some questions about [respondent's] work with [employer]. Is this still the correct employer name?**

**I would like to ask you some questions about your work with [employer]. Is this still the correct employer name?**

1. Yes
2. No
8. Refuse
9. Don't know

If Yes/Refuse/Don't know If paid worker go to CH\_Q040;  
If self employed or working in a family business  
without pay go to CH\_Q011

If No go to CH\_Q010

CH\_Q010: **What is the employer name?**

If paid worker	go to CH_Q040
If self-employed or working in a family business without pay	go to CH_Q011
If Refuse/Don't know	go to CH_E010

Maximum: 50 bytes

CH\_E010: **If you don't know the name, can you give me a brief description of the employer?** (e.g. restaurant, hospital, etc.)

If paid worker	go to CH_Q040
If self-employed or working in a family business without pay	go to CH_Q011

?CH\_Q011: **Is he still [class of worker]?**

**Is she still [class of worker]?**

**Are you still [class of worker]?**

1. Yes (if Hhinfo.Clwrk69 = 2, set SelfEmp to 1)
2. No
8. Refuse
9. Don't know

If confirmed	and self employed, go to CH_Q050; and not self employed, go to CH_Q040
If No	go to CH_Q017
If Refuse/Don't know	go to CH_E015

?CH\_Q015: **In this job, was he . . .**

**In this job, was she . . .**

**In this job, were you . . .**

1. **A paid worker?**
2. **Self employed?** (set SelfEmp to 1)
3. **Working in a family business without pay?**
8. Refuse
9. Don't know

If Paid worker	go to CH_Q030
----------------	---------------

If Self employed go to CH\_Q020  
If Working in a family business  
without pay go to CH\_Q050  
Refuse/Don't know go to CH\_E015

?CH\_Q017: **Is he ...**

**Is she ...**

**Are you ...**

1. **A paid worker?**
2. **Self employed?** (set SelfEmp to 1)
3. **Working in a family business without pay?**
8. Refuse
9. Don't know

If Paid worker go to CH\_Q030  
If Self employed go to CH\_Q020  
If Working in a family business  
without pay go to CH\_Q050  
Refuse/Don't know go to CH\_E015

CH\_E015: INTERVIEWER: Class of worker is required for question flow. Go back to previous questions and enter the class of worker.

CH\_Q020: **Did he have an incorporated business?**

**Did she have an incorporated business?**

**Did you have an incorporated business?**

1. Yes
2. No
8. Refuse
9. Don't know

go to CH\_Q025

CH\_Q025: **Did he have any employees?**

**Did she have any employees?**

**Did you have any employees?**

- |    |            |               |
|----|------------|---------------|
| 1. | Yes        | go to CH_C040 |
| 2. | No         | go to CH_C040 |
| 8. | Refuse     | go to CH_Q050 |
| 9. | Don't know | go to CH_Q050 |

CH\_Q030: **How did he get his job with [employer]?**

**How did she get her job with [employer]?**

**How did you get your job with [employer]?**

01. Contacted employer directly
02. Friend or relative
03. Searched the Internet
04. Placed or answered newspaper ad
05. Employment agency (including Canada Employment Centres)
06. Referral from another employer
07. Contacted directly by employer
08. Union
09. Required for Social Assistance/Welfare-Workfare
10. Other (specify)
98. Refuse
99. Don't know

If answered "Other"	go to CH_Q030S
Otherwise	go to CH_C035

CH\_Q030S: INTERVIEWER: Specify

Maximum: 80 bytes

go to CH\_C035

CH_C035:	If Compinfo.prlflg59 = 1	go to CH_Q038 (new panel, joiners Jan. or May)
	If Compinfo.prlflg59 = 2	go to CH_Q035 (previously interviewed respondent)

CH\_Q035: **When was he offered this job?**

**When was she offered this job?**

**When were you offered this job?**

Hard range: minimum: [reference year] minus ([age] minus 10)

(10 years old)  
maximum: start date of job  
(DA\_Q045/\_Q050/\_Q055) or 12/[reference year]  
Edit text: Respondent cannot be offered the job  
after starting the job

Soft range: minimum: 01/[reference year]  
maximum: 12/[reference year]

go to CH\_C040

Soft edit for CH\_Q035:  
If respondent gives minimum date prior to January 1 of [reference  
year] the following message will pop up:

CH\_E035: **We are considering only jobs that started between January and  
December of [reference year]. Are you sure about the date you  
were offered this job?**

CH\_Q038: **When was he offered this job?**

**When was she offered this job?**

**When were you offered this job?**

Hard range: minimum: [reference year] minus ([age] minus 10)  
(10 years old)  
maximum: start date of job (DA\_Q045/Q050/Q055)  
or 12/[reference year]

go to CH\_C040

CH\_C040: If self employed go to CH\_Q050  
Otherwise go to CH\_Q040

CH\_Q040: **[Is/Was] his job permanent, or is there some way that it  
[is/was] not permanent?** (e.g. seasonal, temporary, term, casual,  
etc.)

**[Is/Was] her job permanent, or is there some way that it  
[is/was] not permanent?** (e.g. seasonal, temporary, term, casual,  
etc.)

**[Is/Was] your job permanent, or is there some way that it  
[is/was] not permanent?** (e.g. seasonal, temporary, term, casual,  
etc.)

If DA\_Q085 = No, use the words "Was" and "was" in the question text. Otherwise, use the words "Is" and "is" in the question text.

1. Permanent
2. Not permanent
8. Refuse
9. Don't know

If Permanent/Refuse/Don't know                      go to CH\_Q050  
If Not permanent    go to CH\_Q045

CH\_Q045: **In what way is his job not permanent?**

**In what way is her job not permanent?**

**In what way is your job not permanent?**

1. **Seasonal job**
2. **Temporary, term or contract job (non-seasonal)**
3. **Casual job**
4. **Work done through a temporary help agency**
5. Other (specify)
8. Refuse
9. Don't know

If answered "Other"                      go to CH\_Q045S  
Otherwise                                      go to CH\_Q050

CH\_Q045S: INTERVIEWER: Specify

Maximum: 80 bytes

go to CH\_Q050

?CH\_Q050: **How many persons were employed at the location where he worked for [employer]? Was it . . .**

**How many persons were employed at the location where she worked for [employer]? Was it . . .**

**How many persons were employed at the location where you worked for [employer]? Was it . . .**

1. **Less than 20**
2. **20 to 99**



3. **100 to 499**
4. **500 to 999**
5. **1000 and over**
8. Refuse
9. Don't know

go to CH\_Q055

**?CH\_Q055: Did this employer operate at more than one location?**

1. Yes
2. No
8. Refuse
9. Don't know

Yes if CH\_Q050 = 5 and job type = 1 or 2, go to CH\_Q065;  
if CH\_Q050 = 5 and job type = 3, go to CH\_Q080;  
otherwise, go to CH\_Q060

No/Refuse/Don't know if job type = 1 or 2 go to CH\_Q065;  
if job type = 3 go to CH\_Q080

**?CH\_Q060: About how many persons were employed at all these locations? Was it . . .**

INTERVIEWER: Probe for an estimate

1. **Less than 20**
2. **20 to 99**
3. **100 to 499**
4. **500 to 999**
5. **1000 and over**
8. Refuse
9. Don't know

If job type = 1 or 2 go to CH\_Q065  
If job type = 3 go to CH\_Q080

Soft edit on CH\_Q060:  
If CH\_Q060 < CH\_Q050 go to CH\_E060

**CH\_E060: You reported less people working at all locations than the location where you are working.**

CH\_Q065: **Our records show that in January [reference year], the kind of work he was doing was [type of work]. Is this correct?**

**Our records show that in January [reference year], the kind of work she was doing was [type of work]. Is this correct?**

**Our records show that in January [reference year], the kind of work you were doing was [type of work]. Is this correct?**

1. Yes go to CH\_Q090
2. No go to CH\_Q070
8. Refuse go to CH\_Q090
9. Don't know go to CH\_Q090

?CH\_Q070: **What kind of work was he doing with [employer] in January [reference year]?** (e.g. office clerk, factory worker, forestry technician)

**What kind of work was she doing with [employer] in January [reference year]?** (e.g. office clerk, factory worker, forestry technician)

**What kind of work were you doing with [employer] in January [reference year]?** (e.g. office clerk, factory worker, forestry technician)

Maximum: 50 bytes

go to CH\_Q075

?CH\_Q075: **What were his most important activities or duties in January [reference year]?** (e.g. filing documents, drying vegetables, forest examiner)

**What were her most important activities or duties in January [reference year]?** (e.g. filing documents, drying vegetables, forest examiner)

**What were your most important activities or duties in January [reference year]?** (e.g. filing documents, drying vegetables, forest examiner)

Maximum: 50 bytes

Go to CH\_Q090

?CH\_Q080: **What kind of work was he doing with [employer]?** (e.g. office clerk, factory worker, forestry technician)

**What kind of work was she doing with [employer]?** (e.g. office clerk, factory worker, forestry technician)

**What kind of work were you doing with [employer]?** (e.g. office clerk, factory worker, forestry technician)

Maximum: 50 bytes

go to CH\_Q085

?CH\_Q085: **What were his most important activities or duties?** (e.g. filing documents, drying vegetables, forest examiner)

**What were her most important activities or duties?** (e.g. filing documents, drying vegetables, forest examiner)

**What were your most important activities or duties?** (e.g. filing documents, drying vegetables, forest examine)

Maximum: 50 bytes

go to CH\_Q102

Header for CH\_Q090, \_Q095, Q\_100 and Q\_102: type of work

CH\_Q090: **Did the kind of work he was doing with [employer] change during [reference year]?**

**Did the kind of work she was doing with [employer] change during [reference year]?**

**Did the kind of work you were doing with [employer] change during [reference year]?**

- |    |            |               |
|----|------------|---------------|
| 1. | Yes        | go to CH_Q095 |
| 2. | No         | go to CH_Q102 |
| 8. | Refuse     | go to CH_Q102 |
| 9. | Don't know | go to CH_Q102 |

?CH\_Q095: **What kind of work was he doing [when this job ended] [at the end of reference year]?** (e.g. office clerk, factory worker, forestry technician)

**What kind of work was she doing [when this job ended] [at the end of reference year]?** (e.g. office clerk, factory worker, forestry technician)

**What kind of work were you doing [when this job ended] [at the end of reference year]?** (e.g. office clerk, factory worker, forestry technician)

Maximum: 50 bytes

go to CH\_Q100

?CH\_Q100: **What were his most important activities or duties [when this job ended] [at the end of reference year]?** (e.g. filing documents, drying vegetables, forest examiner)

**What were her most important activities or duties [when this job ended] [at the end of reference year]?** (e.g. filing documents, drying vegetables, forest examiner)

**What were your most important activities or duties [when this job ended] [at the end of reference year]?** (e.g. filing documents, drying vegetables, forest examiner)

Maximum: 50 bytes

go to CH\_Q102

CH\_Q102: **How closely was this job related to [his] education?**

**How closely was this job related to [her] education?**

**How closely was this job related to [your] education?**

1. **Closely related**
2. **Somewhat related**
3. **Not related at all**
8. Refuse
9. Don't know

go to CH\_Q105

Header: employer name, start date and end date

?CH\_Q105: **In the past year at this job, as part of his duties, did he supervise the work of other employees on a day-to-day basis?**

**In the past year at this job, as part of her duties, did she supervise the work of other employees on a day-to-day basis?**

**In the past year at this job, as part of your duties, did you supervise the work of other employees on a day-to-day basis?**

1. Yes
2. No
8. Refuse
9. Don't know

If Yes go to CH\_Q110

If No/Refuse/Don't know

and paid worker go to CH\_Q125

Otherwise go to CH\_Q150

**CH\_Q110: About how many people did he supervise directly?**

**About how many people did she supervise directly?**

**About how many people did you supervise directly?**

INTERVIEWER: Probe for an estimate

Hard range: minimum: 1  
maximum: 995

Soft range: > 60

go to CH\_Q115

**?CH\_Q115: Did he have an influence on whether a person he supervised received a pay raise or promotion?**

**Did she have an influence on whether a person she supervised received a pay raise or promotion?**

**Did you have an influence on whether a person you supervised received a pay raise or promotion?**

1. Yes
2. No
8. Refuse
9. Don't know

go to CH\_Q120

?CH\_Q120: **Was he directly responsible for deciding the work to be done by the people he supervised?**

**Was she directly responsible for deciding the work to be done by the people she supervised?**

**Were you directly responsible for deciding the work to be done by the people you supervised?**

1. Yes
2. No
8. Refuse
9. Don't know

If paid worker go to CH\_Q125

Otherwise go to CH\_Q150

?CH\_Q125: **In the past year at this job, did he make decisions about budgets or staffing?**

**In the past year at this job, did she make decisions about budgets or staffing?**

**In the past year at this job, did you make decisions about budgets or staffing?**

1. Yes
2. No
8. Refuse
9. Don't know

go to CH\_Q130

?CH\_Q130: **Was his work with [employer] managerial?**

**Was her work with [employer] managerial?**

**Was your work with [employer] managerial?**

1. Yes
2. No
8. Refuse
9. Don't know

If Yes go to CH\_Q135  
If No/Refuse/Don't know go to CH\_Q140

?CH\_Q135: **Would his work be best described as top, upper, middle or lower management?**

**Would her work be best described as top, upper, middle or lower management?**

**Would your work be best described as top, upper, middle or lower management?**

1. Top management
2. Upper management
3. Middle management
4. Lower management
8. Refuse
9. Don't know

go to CH\_Q140

?CH\_Q140: **Which of the following best describes his work schedule with [employer] [when this job ended] [at the end of reference year]?**

**Which of the following best describes her work schedule with [employer] [when this job ended] [at the end of reference year]?**

**Which of the following best describes your work schedule with [employer] [when this job ended] [at the end of reference year]?**

01. **A regular daytime schedule** go to CH\_Q150
02. **A regular evening shift** go to CH\_Q150
03. **A regular night or graveyard shift** go to CH\_Q150
04. **A rotating shift (changes from days to evenings to nights)** go to CH\_Q150
05. **A split shift (two distinct periods each day)** go to CH\_Q150
06. **On call** go to CH\_Q145
07. **An irregular schedule** go to CH\_Q145
08. **Other (specify)** go to CH\_Q140S
98. **Refuse** go to CH\_Q150
99. **Don't know** go to CH\_Q150

CH\_Q140S INTERVIEWER: Specify

Maximum: 80 bytes

go to CH\_Q150

CH\_Q145: **What was the main reason that he worked this schedule?**

**What was the main reason that she worked this schedule?**

**What was the main reason that you worked this schedule?**

01. Own illness or disability
02. Caring for own children
03. Caring for elder relatives(s)
04. Other personal or family responsibilities
05. Going to school
06. Could only find this type of work
07. Did not want a regular schedule
08. Requirement of the job/no choice
09. Earn more money
10. Other (specify)
98. Refuse
99. Don't know

If answered "Other" go to CH\_Q145S

Otherwise go to CH\_Q150

CH\_Q145S INTERVIEWER: Specify

Maximum: 80 bytes

go to CH\_Q150

?CH\_Q150: **At this job, did he usually work every week of the month?**

**At this job, did she usually work every week of the month?**

**At this job, did you usually work every week of the month?**

1. Yes
2. No
8. Refuse
9. Don't know

If Yes/Refuse/Don't know

If paid worker, go to



CH\_Q160;  
If self employed or working  
in a family business without  
pay, go to CH\_Q165

If No go to CH\_Q155

?CH\_Q155: **At this job, how many weeks did he usually work each month?**

**At this job, how many weeks did she usually work each month?**

**At this job, how many weeks did you usually work each  
month?**

Hard range: minimum: 1  
maximum: 3

If paid worker go to CH\_Q160

If self employed or working in  
a family business without pay go to CH\_Q165

?CH\_Q160: **At this job, excluding overtime, how many hours per week did  
he usually get paid?**

**At this job, excluding overtime, how many hours per week did  
she usually get paid?**

**At this job, excluding overtime, how many hours per week did  
you usually get paid?**

INTERVIEWER: If the hours/week vary, ask for the average  
over the last 4 weeks worked

Hard range: minimum: 1.00  
maximum: 168.00

Soft range: < 5 and > 60

If total is < than 30 hours go to CH\_Q170

If total is > than 29 hours/Refuse/

Don't know go to CH\_Q175

?CH\_Q165: **At this job, how many hours per week did he usually work?**

**At this job, how many hours per week did she usually work?**

**At this job, how many hours per week did you usually work?**

INTERVIEWER: If the hours/week vary, ask for the average over the last 4 weeks worked

Hard range: minimum: 1.00  
maximum: 168.00

Soft range: < 5 and > 60

If total is < than 30 hours go to CH\_Q169

If total is > than 29 hours/Refuse/

Don't know go to CH\_Q175

Soft edit on CH\_Q165: Answer seems unusual. Are you sure it's correct?

CH\_Q169: **Did he want to work 30 or more hours per week at this job?**

**Did she want to work 30 or more hours per week at this job?**

**Did you want to work 30 or more hours per week at this job?**

1. Yes
2. No
8. Refuse
9. Don't know

go to CH\_Q170

?CH\_Q170: **At this job, what was the main reason he usually worked less than 30 hours per week?**

**At this job, what was the main reason she usually worked less than 30 hours per week?**

**At this job, what was the main reason you usually worked less than 30 hours per week?**

01. Own illness or disability
02. Caring for own children
03. Caring for elder relative(s)
04. Other personal or family responsibilities
05. Going to school
06. Could not find work with 30 or more hours
07. Personal preference

- 08. Full-time work under 30 hours per week (nature of the job)
- 09. Business conditions
- 10. Semi-retired or pre-retired
- 11. Other (specify)
- 98. Refuse
- 99. Don't know

If answered "Other"                    go to CH\_Q170S  
 Otherwise                                    go to CH\_Q175

CH\_Q170S: INTERVIEWER:    Specify

Maximum: 80 bytes

go to CH\_Q175

?CH\_Q175: **At this job, did he regularly work any of his scheduled hours at home?**

**At this job, did she regularly work any of her scheduled hours at home?**

**At this job, did you regularly work any of your scheduled hours at home?**

- 1. Yes
- 2. No
- 8. Refuse
- 9. Don't know

Yes                                    go to CH\_Q180

No                                    If self employed or working in a family business without pay, go to CH\_Q210;  
 If a paid worker and CH\_Q140 = On call, go to CH\_Q210;  
 If a paid worker and CH\_Q140 = Irregular schedule, go to CH\_Q251;  
 Otherwise, go to CH\_Q185

Refuse/Don't know    go to CH\_Q185

CH\_Q180: **How many hours per week did he usually work at home?**

**How many hours per week did she usually work at home?**

**How many hours per week did you usually work at home?**

Hard range: minimum: 1.00  
maximum: 168.00

Soft range: > 60

If self employed or working in a family  
business without pay go to CH\_Q210  
If a paid worker and CH\_Q140 = On call go to CH\_Q210  
If a paid worker and CH\_Q140 = Irregular  
schedule go to CH\_Q251  
Refuse/Don't know go to CH\_Q185  
Otherwise go to CH\_Q185

CH\_Q185: **Did the number of hours usually worked per week for this employer change in [reference year]?**

1. Yes
2. No
8. Refuse
9. Don't know

If Yes go to CH\_Q190

If No/Refuse/Don't know and:  
if paid worker and same employer as  
last year [DA\_Q005 = Yes or  
DA\_Q010 = Yes OR (DA\_Q010 = No  
and DA\_Q025 = Yes)] and Compinfo.oldwge69  
and Compinfo.oldwgu69 > 0 go to CH\_C240

if paid worker and same employer as last year  
[DA\_Q005 = Yes or DA\_Q010 = Yes OR  
(DA\_Q010 = No and DA\_Q025 = Yes)]  
and Compinfo.oldwge69 and  
Compinfo.oldwgu69 = 0 go to CH\_Q245

Otherwise go to CH\_Q251

CH\_Q190: **In what month was this?**

INTERVIEWER: If the number of hours changed more than  
once, select month of last change.

If months not equal to dates worked go to CH\_E190

Otherwise

go to CH\_Q195

CH\_E190: Check dates. Month in which hours changed is not within start and end dates of job.

go to CH\_Q195

CH\_Q195: **Before this change, did he usually work every week of the month?**

**Before this change, did she usually work every week of the month?**

**Before this change, did you usually work every week of the month?**

1. Yes
2. No
8. Refuse
9. Don't know

If Yes

go to CH\_Q205

Otherwise

go to CH\_Q200

CH\_Q200: **How many weeks did he usually work per month?** (before this change)

**How many weeks did she usually work per month?** (before this change)

**How many weeks did you usually work per month?** (before this change)

INTERVIEWER: Probe for an estimate

Hard range: minimum: 1  
maximum: 3

go to CH\_Q205

?CH\_Q205: **Excluding overtime, how many hours per week did he usually get paid?** (before this change)

**Excluding overtime, how many hours per week did she usually get paid?** (before this change)

**Excluding overtime, how many hours per week did you usually get paid?** (before this change)

INTERVIEWER: Probe for an estimate

Hard range: minimum: 1.00  
maximum: 168.00

Soft range: < 5 and > 60

If paid worker and same employer as last year  
[DA\_Q005 = Yes or DA\_Q010 = Yes OR  
(DA\_Q010 = No and DA\_Q025 = Yes)]  
and Compinfo.oldwge69 and  
Compinfo.oldwgu69 > 0 go to CH\_C240

If paid worker and same employer as last year  
[DA\_Q005 = Yes or DA\_Q010 = Yes OR  
(DA\_Q010 = No and DA\_Q025 = Yes)] and  
Compinfo.oldwge69 and  
Compinfo.oldwgu69 = 0 go to CH\_Q245

Otherwise go to CH\_Q251

CH\_Q210: **Last year, when did he work for [employer]?**

**Last year, when did she work for [employer]?**

**Last year, when did you work for [employer]?**

1. **All months of the year**

Edit on all months of the year:  
To select this answer, respondent must have worked from  
01/01/[reference year] to 31/12/[reference year]; otherwise  
go to CH\_E210

If paid worker and not the same employer  
as last year [DA\_Q005 = No OR  
(DA\_Q010 = No and DA\_Q025 = No/DK/R)  
OR Jobtype = 3] go to CH\_Q251

If paid worker and same employer as  
last year [DA\_Q005 = Yes or  
DA\_Q010 = Yes OR (DA\_Q010 = No  
and DA\_Q025 = Yes)] and

Compinfo.oldwge69 and  
Compinfo.oldwgu69 > 0 go to CH\_C240

If paid worker and same employer as  
last year [DA\_Q005 = Yes or  
DA\_Q010 = Yes OR (DA\_Q010 = No  
and DA\_Q025 = Yes)] and  
Compinfo.oldwge69 = \$0.00 and  
Compinfo.oldwgu69 = 0 go to CH\_Q245

Otherwise if more employers, go to CH\_C001;  
if no more employers, go to  
SE\_C001

2. **Some of the months** go to CH\_Q215

3. **None of the months** if more employers, go to  
CH\_C001  
if no more employers, go to  
SE\_C001

8./9. Refuse/Don't know

If paid worker and not the same  
employer as last year [DA\_Q005 = No  
OR (DA\_Q010 = No and  
DA\_Q025 = No/DK/R) OR  
Jobtype = 3] go to CH\_Q251

If paid worker and same employer  
as last year [DA\_Q005 = Yes or  
DA\_Q010 = Yes OR (DA\_Q010 = No  
and DA\_Q025 = Yes)] and  
Compinfo.oldwge69 and  
Compinfo.oldwgu69 > 0 go to CH\_C240

If paid worker and same employer  
as last year [DA\_Q005 = Yes or  
DA\_Q010 = Yes OR (DA\_Q010 = No  
and DA\_Q025 = Yes)] and  
Compinfo.oldwge69 = \$0.00 and  
Compinfo.oldwgu69 = 0 go to CH\_Q245

Otherwise if more employers, go to CH\_C001;  
if no more employers, go to  
SE\_C001

CH\_E210: Dates worked for this employer are [start date] and [end date], therefore you cannot select 'All months of the year'.

CH\_Q215: **In which months did he work for [employer]?**

**In which months did she work for [employer]?**

**In which months did you work for [employer]?**

INTERVIEWER: Select all months that apply

- |              |               |
|--------------|---------------|
| 01. January  | 07. July      |
| 02. February | 08. August    |
| 03. March    | 09. September |
| 04. April    | 10. October   |
| 05. May      | 11. November  |
| 06. June     | 12. December  |

If paid worker and not the same employer as last year [DA\_Q005 = No OR (DA\_Q010 = No and DA\_Q025 = No/DK/R) OR Jobtype = 3] go to CH\_Q251

If paid worker and a new employer reported go to CH\_Q251

If paid worker and same employer as last year [DA\_Q005 = Yes or DA\_Q010 = Yes OR (DA\_Q010 = No and DA\_Q025 = Yes)] and Compinfo.oldwge69 and Compinfo.oldwgu69 > 0 go to CH\_C240

If paid worker and same employer as last year [DA\_Q005 = Yes or DA\_Q010 = Yes OR (DA\_Q010 = No and DA\_Q025 = Yes)] and Compinfo.oldwge69 and Compinfo.oldwgu69 = 0 go to CH\_Q245

Otherwise if more employers, go to CH\_C001;  
if no more employers, go to SE\_C001

Edit: Must be within dates worked for this employer;  
If dates inconsistent with job dates go to CH\_E215

CH\_E215: Check dates. Months specified are not within start and end dates of job.



CH\_C240: If PersonProxy = Proxy go to CH\_Q251  
If PersonProxy = NonProxy go to CH\_Q240

CH\_Q240: **Based on our interview of a year ago, your wage at this job in [reference year – 1] was \$ [prefill from Compinfo.oldwge69 and Compinfo.oldwgu69]. Is this correct?**

1. Yes set WageFlag to 1 and go to CH\_Q248
2. No set WageFlag to 1 and go to CH\_Q245
8. Refuse go to CH\_Q255
9. Don't know go to CH\_Q255

CH\_Q245: **What was his wage at this job [at the beginning/in [month]] of [reference year]? This includes tips and commissions but not paid overtime.**

**What was her wage at this job [at the beginning/in [month]] of [reference year]? This includes tips and commissions but not paid overtime.**

**What was your wage at this job [at the beginning/in [month]] of [reference year]? This includes tips and commissions but not paid overtime.**

INTERVIEWER: If wage is greater than \$999,995.00, enter 999,995.00

Prefill the question text as follows:

If "01" is in the response for CH\_Q215, prefill with "at the beginning"

Else if "02" is in the response for CH\_Q215, prefill with "in [February]"

Else if "03" is in the response for CH\_Q215, prefill with "in [March]"

Else if "04" is in the response for CH\_Q215, prefill with "in [April]"

Else if "05" is in the response for CH\_Q215, prefill with "in [May]"

Else if "06" is in the response for CH\_Q215, prefill with "in [June]"

Else if "07" is in the response for CH\_Q215, prefill with "in [July]"

Else if "08" is in the response for CH\_Q215, prefill with "in [August]"

Else if "09" is in the response for CH\_Q215, prefill with "in [September]"

Else if "10" is in the response for CH\_Q215, prefill with "in [October]"

Else if "11" is in the response for CH\_Q215, prefill with "in [November]"

Else if "12" is in the response for CH\_Q215, prefill with "in [December]"

Otherwise, prefill with "at the beginning"

Hard range:   minimum: \$       0.01  
                  maximum: \$ 999,995.00

Soft range:   > \$99,995

Refuse/Don't know           go to CH\_Q248  
Otherwise                    go to CH\_Q246

CH\_Q246:   **Is this wage . . .**

01.   **Hourly?**
02.   **Daily?**
03.   **Weekly?**
04.   **Bi-weekly?**
05.   **Semi-monthly?**
06.   **Monthly?**
07.   **Yearly?**
08.   Other (specify)

Refuse/Don't know           not permitted for this question

If answered "Other"        go to CH\_Q246S  
Otherwise                    go to CH\_Q248

CH\_Q246S:   INTERVIEWER:   Specify

Maximum: 80 bytes

go to CH\_Q255

CH\_Q248:   **Did his wage at this job change during [reference year]?**

**Did her wage at this job change during [reference year]?**

**Did your wage at this job change during [reference year]?**

1.    Yes
2.    No

- 8. Refuse
- 9. Don't know

If Yes go to CH\_Q249  
 If No and compinfo.oldwgu69 = 02 "daily" go to CH\_Q255  
 Otherwise go to CH\_Q260

CH\_Q249: **In which month did this wage change occur?**

INTERVIEWER: Select month. If more than one wage change, select month of last change.

- 01. January
- 02. February
- 03. March
- 04. April
- 05. May
- 06. June
- 07. July
- 08. August
- 09. September
- 10. October
- 11. November
- 12. December
- 98. Refuse
- 99. Don't know

go to CH\_Q251

CH\_Q251: **What is the easiest way for you to tell us his [new] wage or salary at this job? Would it be:**

**What is the easiest way for you to tell us her [new] wage or salary at this job? Would it be:**

**What is the easiest way for you to tell us your [new] wage or salary at this job? Would it be:**

- 01. **Hourly ?**
- 02. **Daily ?**
- 03. **Weekly ?**
- 04. **Bi-weekly ?**
- 05. **Semi-monthly ?**
- 06. **Monthly ?**
- 07. **Yearly ?**
- 08. Other (specify)

If CH\_Q248 = Yes, prefill the question text with "new"

Refuse/Don't know not permitted for this question

If answered "Other" set WageFlag to 1 and go to CH\_Q251S

Otherwise set WageFlag to 1 and go to CH\_Q252

CH\_Q251S: INTERVIEWER: Specify

Maximum: 80 bytes

go to CH\_Q255

CH\_Q252: **What was his [prefill of answer from CH\_Q251] wage or salary, before taxes and deductions, [when this job ended] [at the end of reference year]? This includes tips and commissions but not paid overtime.**

**What was her [prefill of answer from CH\_Q251] wage or salary, before taxes and deductions, [when this job ended] [at the end of reference year]? This includes tips and commissions but not paid overtime.**

**What was your [prefill of answer from CH\_Q251] wage or salary, before taxes and deductions, [when this job ended] [at the end of reference year]? This includes tips and commissions but not paid overtime.**

INTERVIEWER: If wage or salary is greater than \$999,995.00, enter \$999,995.00

Hard range: minimum: \$ 0.01  
maximum: \$ 999995.00

If CH\_Q251 = Hourly and < \$5 go to CH\_E252

If CH\_Q251 = Hourly and > \$500 go to CH\_E252

If CH\_Q251 = Daily and > \$4,000 go to CH\_E252

If CH\_Q251 = Weekly and > \$20,000 go to CH\_E252

If CH\_Q251 = Bi-weekly and > \$40,000 go to CH\_E252

If CH\_Q251 = Semi-monthly and > \$40,000 go to CH\_E252

If CH\_Q251 = Monthly and > \$50,000 go to CH\_E252

If CH\_Q251 = Yearly and > \$600,000 go to CH\_E252

Refuse/Don't know go to CH\_Q260

Otherwise go to CH\_Q254

CH\_E252: **So his [prefill of answer from CH\_Q251] wage or salary, before taxes and deductions, was [prefill of answer from CH\_Q252]. Is that correct?**

**So her [prefill of answer from CH\_Q251] wage or salary, before taxes and deductions, was [prefill of answer from CH\_Q252]. Is that correct?**

**So your [prefill of answer from CH\_Q251] wage or salary, before taxes and deductions, was [prefill of answer from CH\_Q252]. Is that correct?**

If No, return to CH\_Q251 or CH\_Q252 and change response  
If Yes, go to CH\_Q254

**CH\_Q254: Does he usually receive tips and commissions?**

**Does she usually receive tips and commissions?**

**Do you usually receive tips and commissions?**

1. Yes
2. No
8. Refuse
9. Don't know

If CH\_Q251 = 'Daily' go to CH\_Q255  
Otherwise go to CH\_Q260

**CH\_Q255: What were his total earnings from this job in [reference year]?**

**What were her total earnings from this job in [reference year]?**

**What were your total earnings from this job in [reference year]?**

**INTERVIEWER:** If earnings are greater than \$999,995.00 enter \$999,995.00

Hard range: minimum: \$ 0.01  
maximum: \$ 999995.00

Soft range: > \$99,995

go to CH\_Q260

**?CH\_Q260: In this job, was he a union member?**

**In this job, was she a union member?**

**In this job, were you a union member?**

1. Yes (set UniMem to 1)
2. No
8. Refuse
9. Don't know

If Yes go to CH\_Q270  
Otherwise go to CH\_Q265

?CH\_Q265: **Was he covered by a union contract or collective agreement?**

**Was she covered by a union contract or collective agreement?**

**Were you covered by a union contract or collective agreement?**

1. Yes (set UniMem to 1)
2. No
8. Refuse
9. Don't know

go to CH\_Q270

?CH\_Q270: **I would now like to ask you about job benefits that some employers offer. In his job with [employer], did he have an employer pension plan?**

**I would now like to ask you about job benefits that some employers offer. In her job with [employer], did she have an employer pension plan?**

**I would now like to ask you about job benefits that some employers offer. In your job with [employer], did you have an employer pension plan?**

INTERVIEWER: Also called a Registered Pension Plan.  
Exclude CPP or QPP (Canada/Quebec Pension Plan).

1. Yes
2. No
8. Refuse
9. Don't know

If Yes go to CH\_Q271  
Otherwise go to CH\_Q272

CH\_Q271: **Did he contribute to this pension plan, for example, through pay deductions?**

**Did she contribute to this pension plan, for example, through pay deductions?**

**Did you contribute to this pension plan, for example, through pay deductions?**

1. Yes (set PenPlan to 1)
2. No
8. Refuse
9. Don't know

go to CH\_Q272

?CH\_Q272: **In this job, did he contribute, through payroll deductions, to a registered retirement savings plan, also called a group RRSP?**

**In this job, did she contribute, through payroll deductions, to a registered retirement savings plan, also called a group RRSP?**

**In this job, did you contribute, through payroll deductions, to a registered retirement savings plan, also called a group RRSP?**

1. Yes
2. No
8. Refuse
9. Don't know

If Yes go to CH\_Q273

Otherwise go to CH\_Q275

?CH\_Q273: **Did his employer contribute to this group RRSP?**

**Did her employer contribute to this group RRSP?**

**Did your employer contribute to this group RRSP?**

1. Yes
2. No
8. Refuse
9. Don't know

go to CH\_Q275

CH\_Q275: **In this job, did his employer offer him any of the following benefits even if he chose not to take them?**

**In this job, did her employer offer her any of the following benefits even if she chose not to take them?**

**In this job, did your employer offer you any of the following benefits even if you chose not to take them?**

INTERVIEWER: Mark all that apply

1. **Medical insurance or health plan in addition to public health insurance coverage**
2. **Dental plan or dental coverage with the health plan**
3. **Life and/or disability insurance plan**
4. None of the above
8. Refuse
9. Don't know

go to CH\_Q277

CH\_Q277: **Did his employer give him the option of a:**

**Did her employer give her the option of a:**

**Did your employer give you the option of a:**

INTERVIEWER: Mark all that apply

1. **Low-interest loan**
2. **Profit sharing plan**
3. **Stock purchase or Stock option plan**
4. None of the above
8. Refuse
9. Don't know

go to CH\_Q279

?CH\_Q279: **In this job, were there other important benefits available to him as an employee?**

**In this job, were there other important benefits available to her as an employee?**

**In this job, were there other important benefits available to**



**you as an employee?**

1. Yes (specify)
2. No
8. Refuse
9. Don't know

If answered "Yes"                    go to CH\_Q279S  
Otherwise                                go to CH\_C280

CH\_Q279S: INTERVIEWER:    Specify

Maximum: 80 bytes

go to CH\_C280

**Absences**

CH\_C280:    If job type = 1 or 3                    go to CH\_Q280  
              If job type = 2                    go to CH\_Q285

On call workers:                    if more employers, go to CH\_C001 ;  
  if no more employers, go to  
  SE\_C001

?CH\_Q280: **Not counting fully paid vacation, was he absent from this job  
for a period of one week or longer, during [refyear]?**

**Not counting fully paid vacation, was she absent from this job  
for a period of one week or longer, during [refyear]?**

**Not counting fully paid vacation, were you absent from this job  
for a period of one week or longer, during [refyear]?**

INTERVIEWER: An absence is a period of at least seven  
consecutive days during which the respondent  
was away from the job, but expected to return to  
the job. Examples of absences are: temporary  
lay-offs (seasonal or economic), strikes,  
maternity or paternity leave, paid or unpaid sick  
leave and unpaid educational leave.

1. Yes
2. No
8. Refuse
9. Don't know

If yes                                    go to CH\_Q320  
Otherwise                                if more employers, go to CH\_C001;  
if no more employers go to SE\_C001

CH\_Q285:    **Before returning to work for [employer] did he receive any pay from this employer?**

**Before returning to work for [employer] did she receive any pay from this employer?**

**Before returning to work for [employer] did you receive any pay from this employer?**

1.     Yes
2.     No
8.     Refuse
9.     Don't know

If Yes                                    go to CH\_Q290  
Otherwise                                go to CH\_C290

CH\_Q290:    **Was that full or partial pay?**

1.     Full pay
2.     Partial pay
8.     Refuse
9.     Don't know

go to CH\_C290

CH\_C290:    If Compinfo.absrsn69 = 09  
(reason for absence is seasonal layoff )            go to CH\_Q295  
Otherwise                                go to CH\_Q305

?CH\_Q295:    **In [reference year], did he look for another job before returning to work?**

**In [reference year], did she look for another job before returning to work?**

**In [reference year], did you look for another job before returning to work?**

1.     Yes
2.     No

- 8. Refuse
- 9. Don't know

If Yes                      go to CH\_Q300  
Otherwise                  go to CH\_Q305

?CH\_Q300: **In which months did he look for another job?**

**In which months did she look for another job?**

**In which months did you look for another job?**

INTERVIEWER:      Mark all that apply.

- |              |                |
|--------------|----------------|
| 01. January  | 07. July       |
| 02. February | 08. August     |
| 03. March    | 09. September  |
| 04. April    | 10. October    |
| 05. May      | 11. November   |
| 06. June     | 12. December   |
| 98. Refuse   | 99. Don't know |

Edit: Months should be within start date of job and return date in DA\_Q075;  
If not go to CH\_E300  
Otherwise go to CH\_Q305

CH\_E300: Check dates. Months in CH\_Q300 should be before date returned to work in DA\_Q075

Start: date of absence                      End: date of absence

CH\_Q305: **After returning to work for [employer], was he absent from this job for a period of one week or longer, not counting fully paid vacations?**

**After returning to work for [employer], was she absent from this job for a period of one week or longer, not counting fully paid vacations?**

**After returning to work for [employer], were you absent from this job for a period of one week or longer, not counting fully paid vacations?**

- 1. Yes
- 2. No

- 8. Refuse
- 9. Don't know

If Yes go to CH\_Q310  
 If No/Refuse/Don't know and more employers go to CH\_C001  
 If no more employers go to SE\_C001

**CH\_Q310: How many times was he absent after returning to work on [return date from DA\_Q075]?**

**How many times was she absent after returning to work on [return date from DA\_Q075]?**

**How many times were you absent after returning to work on [return date from DA\_Q075]?**

Hard range: minimum: 1  
 maximum: 52

Soft range: = 1 and > 20

If only once make [last] = blank then go to CH\_Q375  
 If more than once make [last] = last then go to CH\_Q375

Refuse/Don't know go to CH\_Q315

**CH\_Q315: Would you say it was more than once?**

- 1. Yes make [last] = last
- 2. No make [last] = blank
- 8. Refuse
- 9. Don't know

If Yes/No go to CH\_Q375  
 If Refuse/Don't know and more employers go to CH\_C001  
 If no more employers go to SE\_C001

**CH\_Q320: How many times was he absent?**

**How many times was she absent?**

**How many times were you absent?**

Hard range: minimum: 1

maximum: 52

Soft range: > 20

If only once, make [first] = a blank go to CH\_Q330  
Otherwise [first] = first and [last] = last go to CH\_Q330

If Refuse and more employers go to CH\_C001  
If Refuse and no more employers go to SE\_C001  
If Don't know go to CH\_Q325

**CH\_Q325: Would you say it was more than once?**

1. Yes make [first] = first, [last] = last
2. No make [first] = blank
8. Refuse
9. Don't know

If Yes/No go to CH\_Q330  
If Refuse/Don't know and more employers, go to CH\_C001  
and no more employers, go to SE\_C001

**CH\_Q330: When did his [first] absence begin?**

**When did her [first] absence begin?**

**When did your [first] absence begin?**

INTERVIEWER: If date absence started is before January 1, [refyear], enter 01/01/[refyear].

Hard range: must be within dates worked for this employer

Interviewer enters day/month/ year go to CH\_Q335  
Refuse/Don't know go to CH\_Q335

If a year < refyear is entered the following hard edit will pop: "If date absence started is before January 1, [refyear], enter 01/01/[refyear]."

If a year > refyear is entered the following hard edit will pop: "Date absence started must be within dates worked for this employer in [refyear]."

**CH\_Q335: When did this absence end?**

INTERVIEWER: If date absence ended is after December 31, [refyear], enter 31/12/[refyear].

Hard range: minimum: [date from CH\_Q330]  
maximum: end date of job or  
31/12/[reference year] if job not ended

Interviewer enters day/month/year

If a year > refyear is entered the following hard edit will pop: "If date absence ended is after December 31, [refyear], enter 31/12/[refyear]."

If a year < refyear is entered the following hard edit will pop: "Date absence ended must be within dates worked for this employer in [refyear]."

If start date from CH\_Q330 or end date from  
CH\_Q335 are Refuse/Don't know go to CH\_Q340  
Otherwise go to CH\_Q345

Edit: CH\_Q335 > CH\_Q330; if not go to CH\_E335  
CH\_Q335 < DA\_Q090; if not go to CH\_E336  
CH\_Q335 - CH\_Q330 > 4; if not go to CH\_E337

CH\_E335: Check dates. Date absence ended in CH\_Q335 should be later than date absence began [date in CH\_Q330].

CH\_E336: Check dates. Date absence ended in CH\_Q335 should be before date job ended [date in DA\_Q090].

CH\_E337: Check dates. Absence spell should be at least 5 working days.

CH\_Q340: **About how many weeks would you say this absence lasted?**

Interviewer enters estimate

Hard range: minimum: 1  
maximum: 52

go to CH\_Q345

?CH\_Q345: **What was the main reason for this absence?**

01. Own illness or disability
02. Maternity leave (females only)

- 03. Paternity leave (males only)
- 04. Caring for own children
- 05. Caring for elder relative(s)
- 06. Other personal or family responsibilities
- 07. School or educational leave
- 08. Labour dispute (strike or lockout)
- 09. Seasonal layoff
- 10. Temporary layoff due to business conditions
- 11. Unpaid or partially paid vacation
- 12. Other (specify)
- 98. Refuse
- 99. Don't know

If answered "Own illness or disability"      go to CH\_Q350  
 If answered "Other"                                go to CH\_Q345S  
 Otherwise    go to CH\_Q355

CH\_Q345S: INTERVIEWER:      Specify

Maximum: 80 bytes

go to CH\_Q355

?CH\_Q350: **Was this due to a work related illness or injury?**

- 1. Yes
- 2. No
- 8. Refuse
- 9. Don't know

If DA\_Q076 = Yes                                go to CH\_Q357  
 Otherwise    go to CH\_Q355

CH\_Q355: **Did he receive any pay from [employer] for this absence?**

**Did she receive any pay from [employer] for this absence?**

**Did you receive any pay from [employer] for this absence?**

- 1. Yes
- 2. No
- 8. Refuse
- 9. Don't know

If Yes    go to CH\_Q360

If No/Refuse/Don't know

if CH\_Q345 = 09 (seasonal  
layoff) go to CH\_Q365;  
if more than one absence, go  
to CH\_Q375;  
if one absence and more  
employers, go to CH\_C001;  
if no more employers, go to  
SE\_C001

CH\_Q357: **Did he receive any pay from [employer] for this absence during [reference year]?**

**Did she receive any pay from [employer] for this absence during [reference year]?**

**Did you receive any pay from [employer] for this absence during [reference year]?**

1. Yes
2. No
8. Refuse
9. Don't know

If Yes                      go to CH\_Q360  
Otherwise                go to CH\_Q365

CH\_Q360: **Was that full or partial pay?**

1. Full pay
2. Partial pay
8. Refuse
9. Don't know

If CH\_Q345 = 09 (seasonal layoff)                go to CH\_Q365  
If more than one absence                          go to CH\_Q375  
If one absence and more employers              go to CH\_C001  
If no more employers                                go to SE\_C001

?CH\_Q365: **Did he look for another job during this absence?**

**Did she look for another job during this absence?**

**Did you look for another job during this absence?**

1. Yes
2. No



- 8. Refuse
- 9. Don't know

If Yes, and absence start and end dates complete, go to CH\_Q370; absence start and end dates not complete and more employers go to CH\_C001; no more employers go to SE\_C001

If No/Refuse/Don't know, and more than one absence go to CH\_Q375; one absence and more employers go to CH\_C001; no more employers go to SE\_C001

?CH\_Q370: **In which months did he look for another job?**

**In which months did she look for another job?**

**In which months did you look for another job?**

INTERVIEWER: Mark all that apply. Months marked should be within dates shown below.

Start: date of absence End: date of absence

- |              |               |
|--------------|---------------|
| 01. January  | 07. July      |
| 02. February | 08. August    |
| 03. March    | 09. September |
| 04. April    | 10. October   |
| 05. May      | 11. November  |
| 06. June     | 12. December  |

If dates inconsistent with dates of absence go to CH\_E370  
 If more than one absence go to CH\_Q375  
 If one absence and more employers go to CH\_C001  
 If no more employers go to SE\_C001

Edit: Months in CH\_Q370 must be within months in CH\_Q330 and CH\_Q335;  
 If not go to CH\_E370

CH\_E370: Hard edit:

Check dates. Months looked for work in CH\_Q370 should be within dates of absence. Go back to CH\_Q330, CH\_Q335 or CH\_Q370 to correct.

Start: date of absence

End: date of absence

CH\_Q375: **When did his [last] absence from this job in [reference year] begin?**

**When did her [last] absence from this job in [reference year] begin?**

**When did your [last] absence from this job in [reference year] begin?**

Interviewer enters day/month/year

Hard range:    minimum:    if job type = 2 then date must be > date returned to work (DA\_Q075)  
if job type = 1 or 3 then the date must >= date in CH\_Q335  
maximum:    end date of job from employer roster or 31/12/[reference year]

go to CH\_Q380

CH\_Q380: **When did this absence end?**

INTERVIEWER:    If absence continued into [current year] enter 31/12/[reference year]

Hard range:    minimum:    start date of last absence  
maximum:    end date of job or 31/12/[reference year] if job not ended

Interviewer enters day/month/ year

If a year > refyear is entered the following hard edit will pop: "If absence continued into [current year] enter 31/12/[reference year]."

If start or end date is Refuse/Don't know    go to CH\_Q385  
Otherwise    go to CH\_Q390

Edit: CH\_Q380 – CH\_Q375 > 4; if not, go to CH\_E380

CH\_E380: Check dates. Absence spell should be at least 5 working days.

CH\_Q385: **About how many weeks would you say this absence lasted?**

Hard range: minimum: 1  
maximum: 52

Interviewer enters estimate

Refuse/Don't know

go to CH\_Q390

?CH\_Q390: **What was the main reason for this [last] absence?**

01. Own illness or disability
02. Maternity leave (females only)
03. Paternity leave (males only)
04. Caring for own children
05. Caring for elder relative(s)
06. Other personal or family responsibilities
07. School or educational leave
08. Labour dispute (strike or lockout)
09. Seasonal layoff
10. Temporary layoff due to business conditions
11. Unpaid or partially paid vacation
12. Other (specify)
98. Refuse
99. Don't know

If answered "Own illness or disability" go to CH\_Q395  
If answered "Other" go to CH\_Q390S  
Otherwise go to CH\_Q400

CH\_Q390S: INTERVIEWER: Specify

Maximum: 80 bytes

go to CH\_Q400

?CH\_Q395: **Was this due to a work related illness or injury?**

1. Yes
2. No
8. Refuse
9. Don't know

go to CH\_Q400

CH\_Q400: **Did he receive any pay from [employer] for this absence?**

**Did she receive any pay from [employer] for this absence?**

**Did you receive any pay from [employer] for this absence?**

1. Yes
2. No
8. Refuse
9. Don't know

If Yes go to CH\_Q405  
If No and CH\_Q390 = 09, go to CH\_Q410

Otherwise if more employers, go to CH\_C001;  
if no more employers, go to SE\_C001

CH\_Q405: **Was that full or partial pay?**

1. Full pay
2. Partial pay
8. Refuse
9. Don't know

If CH\_Q390 = 09 go to CH\_Q410

Otherwise if more employers, go to CH\_C001;  
if no more employers, go to SE\_C001

?CH\_Q410: **Did he look for another job during this absence?**

**Did she look for another job during this absence?**

**Did you look for another job during this absence?**

1. Yes
2. No
8. Refuse
9. Don't know

If Yes if absence start and end dates complete, go to CH\_Q415  
if not complete and more

employers, go to CH\_C001;  
if not complete and no more  
employers, go to SE\_C001

If No/Refuse/Don't know      if more employer,s go to  
CH\_C001;  
if no more employers, go to  
SE\_C001

?CH\_Q415: **In which months did he look for another job?**

**In which months did she look for another job?**

**In which months did you look for another job?**

INTERVIEWER:      Mark all that apply. Months marked should  
be within dates shown below.

Start: date of absence      End: date of absence

- |              |                |
|--------------|----------------|
| 01. January  | 07. July       |
| 02. February | 08. August     |
| 03. March    | 09. September  |
| 04. April    | 10. October    |
| 05. May      | 11. November   |
| 06. June     | 12. December   |
| 98. Refuse   | 99. Don't know |

Edit: Months in CH\_Q415 must be within months in CH\_Q375  
and CH\_Q380;  
If not go to CH\_E415  
Otherwise, if more employers go to CH\_C001  
if no more employers go to SE\_C001

CH\_E415: Hard edit:  
Check dates. Months looked for work in CH\_Q415 should be  
within dates of  
absence. Go back to CH\_Q375, CH\_Q380 or CH\_Q415 to correct.

Start: day/mo./year of absence      End: day/mo./year of absence  
(Prefill month in start date and end date with [text month])

To correct      go to CH\_Q375 or CH\_Q415  
Otherwise      if more employers go to CH\_C001  
if no more employers go to SE\_C001

### 5.3 SE Module

SE\_C001: If there are jobless spells and if  
Compinfo.lookwk59 = 1 (was jobless Jan. 1/  
[reference year]) and gap started < = Jan 6  
of [reference year] go to SE\_Q001  
If a jobless spell identified during  
current interview go to SE\_Q005  
If there are no jobless spells go to CO\_C001  
If start date or end date of jobless  
spell = R/DK go to CO\_C001

Header for SE Module: Non working period from \_\_\_\_\_ to \_\_\_\_\_

?SE\_Q001: **Based on our interview of a year ago, [respondent] was looking for work around the beginning of January [reference year]. Is this correct?**

**Based on our interview of a year ago, you were looking for work around the beginning of January [reference year]. Is this correct?**

1. Yes
2. No
8. Refuse
9. Don't know

If Yes go to SE\_Q010  
If No/Refuse/Don't know go to SE\_Q005

SE\_Q005: **Did [respondent] look for work at any time between [start date of jobless spell] and [end date of jobless spell]?**

**Did you look for work at any time between [start date of jobless spell] and [end date of jobless spell]?**

1. Yes
2. No
8. Refuse
9. Don't know

If Yes go to SE\_Q010  
If No/Refuse/Don't know go to SE\_Q015

SE\_Q010: **In which months did he look?**

**In which months did she look?**

**In which months did you look?**

1. In all months of jobless spell
2. Specify months
8. Refuse
9. Don't know

If answered 'In all months of  
jobless spell'/Refuse/Don't know

if another jobless  
spell, go to SE\_Q005;  
if no more jobless  
spells, go to  
CO\_C001

Otherwise

go to SE\_N010

SE\_N010: INTERVIEWER: Indicate months looked for work. Months must be between [start of jobless spell] and [end of jobless spell].  
Select from list of months; mark all that apply

- |              |                |
|--------------|----------------|
| 01. January  | 07. July       |
| 02. February | 08. August     |
| 03. March    | 09. September  |
| 04. April    | 10. October    |
| 05. May      | 11. November   |
| 06. June     | 12. December   |
| 98. Refuse   | 99. Don't know |

If another jobless spell

go to SE\_Q005

If no more jobless spells

go to CO\_C001

Edit: Months looked for work must be between start and end dates of jobless spell.  
If not go SE\_E010

SE\_E010: Check dates. Months looked for work in SE\_Q010 should be within jobless dates in SE\_Q005.

If another jobless spell

go to SE\_Q005

If no more jobless spells

go to CO\_C001

SE\_Q015: **Did he want a job during this period?**

**Did she want a job during this period?**

**Did you want a job during this period?**

1. Yes
2. No
8. Refuse
9. Don't know

If Yes go to SE\_Q020  
If No/Refuse/Don't know if more jobless spells, go to SE\_Q005;  
if no more jobless spells, go to CO\_C001

SE\_Q020: **What was the main reason he did not look for work during this period?**

**What was the main reason she did not look for work during this period?**

**What was the main reason you did not look for work during this period?**

01. Own illness or disability
02. Caring for own children
03. Caring for elder relative(s)
04. Other personal or family responsibilities
05. Going to school
06. Waiting for recall (to former job)
07. Waiting for replies from employers
08. Believes no work available
09. No reason given
10. Other (specify)
98. Refuse
99. Don't know

If answered "Other" go to SE\_Q020S  
Otherwise if another jobless spell, go to SE\_Q005  
if no more jobless spells, go to CO\_C001

SE\_Q020S: INTERVIEWER: Specify

Maximum: 80 bytes



If another jobless spell            go to SE\_Q005  
If no more jobless spells         go to CO\_C001

#### 5.4 CO Module

CO\_C001:    If Compinfo.uiflg59 = 1 (received Employment  
                 Insurance benefits in December [previous  
                 reference year])                                    go to CO\_Q005  
                 If (Hhinfo.uiflg59 = 2 or empty) and  
                 EX\_Q005 = Yes (has ever worked),  
                 DK, R or Blank                                         go to CO\_Q010  
                 If (Hhinfo.uiflg59 = 2 or empty) and  
                 EX\_Q005 = No (never worked)                        go to CO\_C035

CO\_Q005:    **Based on our interview of a year ago, [respondent] received  
                 Employment Insurance benefits in December [previous year].  
                 Is this correct?**

**Based on our interview of a year ago, you received  
Employment Insurance benefits in December [previous year].  
Is this correct?**

1.     Yes
2.     No
8.     Refuse
9.     Don't know

go to CO\_Q010

?CO\_Q010:    **Did [respondent] receive any income from Employment  
                 Insurance benefits in [reference year]?**

**Did you receive any income from Employment Insurance  
benefits in [reference year]?**

1.     Yes     (set UIFlg to 1)
2.     No
8.     Refuse
9.     Don't know

If Yes    go to CO\_Q015  
Otherwise     go to CO\_C020

CO\_Q015:    **In which months?**

1.     All months of the year                                go to CO\_C020

- 2. Specify months go to CO\_N015
- 8. Refuse go to CO\_C020
- 9. Don't know go to CO\_C020

CO\_N015: INTERVIEWER: Indicate months Employment Insurance benefits received

- 01. January
- 02. February
- 03. March
- 04. April
- 05. May
- 06. June
- 07. July
- 08. August
- 09. September
- 10. October
- 11. November
- 12. December
- 98. Refuse
- 99. Don't know

If response = Refuse or Don't know go to CO\_C015  
 Otherwise go to CO\_C020

CO\_C015: If CO\_N015 = Refuse/Don't know, then set CO\_Q015 to Refuse/Don't know  
 Go to CO\_C020

CO\_C020 If Hhinfo.wrkcmp59 = 1 (received Workers' Compensation benefits in December [previous reference year]) go to CO\_Q020  
 Otherwise go to CO\_Q025

CO\_Q020: **Based on our interview of a year ago, he received Workers' Compensation benefits in December [previous year]. Is this correct?**

**Based on our interview of a year ago, she received Workers' Compensation benefits in December [previous year]. Is this correct?**

**Based on our interview of a year ago, you received Workers' Compensation benefits in December [previous year]. Is this correct?**

- 1. Yes
- 2. No
- 8. Refuse
- 9. Don't know

go to CO\_Q025

?CO\_Q025: **Did he receive any income from Workers' Compensation benefits in [reference year]?**

**Did she receive any income from Workers' Compensation benefits in [reference year]?**

**Did you receive any income from Workers' Compensation benefits in [reference year]?**

1. Yes (set WorkCom to 1)
2. No
8. Refuse
9. Don't know

If Yes go to CO\_Q030  
Otherwise go to CO\_C035

CO\_Q030: **In which months?**

1. All months of the year go to CO\_C035
2. Specify months go to CO\_N030
8. Refuse go to CO\_C035
9. Don't know go to CO\_C035

CO\_N030: INTERVIEWER: Indicate months Workers' Compensation benefits received

- |              |                |
|--------------|----------------|
| 01. January  | 07. July       |
| 02. February | 08. August     |
| 03. March    | 09. September  |
| 04. April    | 10. October    |
| 05. May      | 11. November   |
| 06. June     | 12. December   |
| 98. Refuse   | 99. Don't know |

If response = Refuse or Don't know go to CO\_C030  
Otherwise go to CO\_C035

CO\_C030: If CO\_N030 = Refuse/Don't know, then set CO\_Q030 to Refuse/Don't know  
Go to CO\_C035

CO\_C035: If Hhinfo.socass = 1 (received Social Assistance in December [previous reference year]) go to CO\_Q035  
Otherwise go to CO\_Q040

?CO\_Q035: **Based on our interview of a year ago, he received Social Assistance or welfare in December [previous year]. Is this correct?**

**Based on our interview of a year ago, she received Social Assistance or welfare in December [previous year]. Is this correct?**

**Based on our interview of a year ago, you received Social Assistance or welfare in December [previous year]. Is this correct?**

1. Yes
2. No
8. Refuse
9. Don't know

go to CO\_Q040

?CO\_Q040: **Did he receive any income from Social Assistance or welfare in [reference year]?**

**Did she receive any income from Social Assistance or welfare in [reference year]?**

**Did you receive any income from Social Assistance or welfare in [reference year]?**

1. Yes (set SocAs to 1)
2. No
8. Refuse
9. Don't know

If Yes go to CO\_Q045  
Otherwise go to SP\_Q001

CO\_Q045: **In which months?**

1. All months of the year
2. Specify months
8. Refuse
9. Don't know

If "Specify months" go to CO\_N045  
Otherwise go to SP\_Q001

CO\_N045: INTERVIEWER: Indicate months Social assistance received

- |     |          |     |            |
|-----|----------|-----|------------|
| 01. | January  | 07. | July       |
| 02. | February | 08. | August     |
| 03. | March    | 09. | September  |
| 04. | April    | 10. | October    |
| 05. | May      | 11. | November   |
| 06. | June     | 12. | December   |
| 98. | Refuse   | 99. | Don't know |

If response = Refuse or Don't know                      go to CO\_C045  
Otherwise    go to SP\_Q001

CO\_C045: If CO\_N045 = Refuse/Don't know, then set CO\_Q045 to  
Refuse/Don't know  
Go to SP\_Q001

### 5.5 SP Module:

?SP\_Q001: **In [reference year], did he RECEIVE any support payments from a former spouse or partner? By support payments we mean alimony, separation allowance, or child support.**

**In [reference year], did she RECEIVE any support payments from a former spouse or partner? By support payments we mean alimony, separation allowance, or child support.**

**In [reference year], did you RECEIVE any support payments from a former spouse or partner? By support payments we mean alimony, separation allowance, or child support.**

INTERVIEWER: "Support payments" are covered by an agreement to pay a fixed amount on a regular basis. Exclude all other gifts or transfers of money. Include only support payments actually received.

1. Yes
2. No
8. Refuse
9. Don't know

If Yes    go to SP\_Q005  
Otherwise    go to SP\_Q010

?SP\_Q005: **What was the total amount he RECEIVED in support payments in [reference year]?**

**What was the total amount she RECEIVED in support payments in [reference year]?**

**What was the total amount you RECEIVED in support payments in [reference year]?**

Hard range: minimum: \$ 1  
maximum: \$ 99999995

Soft range: = \$1 and < \$99996

if a valid amount is entered, set strspnd

go to SP\_Q010

?SP\_Q010: **In [reference year], did he PAY any support payments to a former spouse or partner?**

**In [reference year], did she PAY any support payments to a former spouse or partner?**

**In [reference year], did you PAY any support payments to a former spouse or partner?**

INTERVIEWER: “Support payments” are covered by an agreement to pay a fixed amount on a regular basis. Exclude all other gifts or transfers of money. Include only support payments actually paid.

1. Yes
2. No
8. Refuse
9. Don't know

If Yes go to SP\_Q015  
Otherwise go to SP\_C005

?SP\_Q015: **What was the total amount he PAID in support payments in [reference year]?**

**What was the total amount she PAID in support payments in [reference year]?**

**What was the total amount you PAID in support payments in [reference year]?**

Hard range: minimum: \$ 1  
maximum: \$ 99999995

Soft range: = \$1 and < \$99996

go to SP\_C005

SP\_C005: Person had at least one job during the [reference year]:  
(DateCntr > 0)

Yes go to SP\_C010  
No go to ED\_C001

SP\_C010: At least one child aged 15 or younger present in household:  
(Kids15Flg = 1)

Yes go to SP\_Q020  
No go to ED\_C001

?SP\_Q020: **In [reference year], did he pay for child care, such as day care or babysitting, so that he could work at his paid job(s)?**

**In [reference year], did she pay for child care, such as day care or babysitting, so that she could work at her paid job(s)?**

**In [reference year], did you pay for child care, such as day care or babysitting, so that you could work at your paid job(s)?**

INTERVIEWER: Do not double-count any expenses paid by the household that were already reported for (or by) another household member. Exclude payments to family members living with you.

1. Yes
2. No
8. Refuse
9. Don't know

If Yes go to SP\_Q025  
Otherwise go to SP\_Q040

SP\_Q025: **What was the total amount he paid for child care in [reference year] so that he could work at his paid job(s)?**

**What was the total amount she paid for child care in [reference year] so that she could work at her paid job(s)?**

**What was the total amount you paid for child care in [reference year] so that you could work at your paid job(s)?**

INTERVIEWER: Do not double-count any expenses paid by the household that were already reported for (or by) another member.

Hard range: minimum: \$ 1  
maximum: \$ 99999995

Soft range: = \$1 and < \$99996

If amount entered go to SP\_Q030  
Otherwise go to ED\_C001

SP\_Q030: **Does this include amounts he paid for child care or programs for children so he could continue to work at his job(s) during school holidays?**

**Does this include amounts she paid for child care or programs for children so she could continue to work at her job(s) during school holidays?**

**Does this include amounts you paid for child care or programs for children so you could continue to work at your job(s) during school holidays?**

INTERVIEWER: Do not double-count any expenses paid by the household that were already reported for (or by) another household member.

1. Yes
2. No
8. Refuse
9. Don't know

If No go to SP\_Q035  
Otherwise go to ED\_C001

SP\_Q035: **What was the additional amount for school holidays?**



**INTERVIEWER:** Do not double-count any expenses paid by the household that were already reported for (or by) another member.

Hard range: minimum: \$ 1  
maximum: \$ 99999995

Soft range: = \$1 and < \$99996

go to ED\_C001

?SP\_Q040: **During school holidays in [reference year], did he pay for babysitting or programs for children so that he could work at his paid job(s)?**

**During school holidays in [reference year], did she pay for babysitting or programs for children so that she could work at her paid job(s)?**

**During school holidays in [reference year], did you pay for babysitting or programs for children so that you could work at your paid job(s)?**

**INTERVIEWER:** Do not double-count any expenses paid by the household that were already reported for (or by) another member. Exclude payments to family members living with you.

1. Yes
2. No
8. Refuse
9. Don't know

If Yes go to SP\_Q045  
Otherwise go to ED\_C001

SP\_Q045: **How much were those expenses?**

Hard range: minimum: \$ 1  
maximum: \$ 99999995

Soft range: = \$1 and < \$99996

go to ED\_C001

## 5.6 ED Module

The EDUC module basically covers two types of training activities. The first series of questions (ED\_Q021 to ED\_Q190) deals with “training programs”. A program is a series of courses offered by, through or under the auspices of an educational institution (private or public) that are used as credits towards a degree, diploma or certificate.

The education module captures all institutions attended by the respondent during the reference year and all degrees, certificates or diplomas completed. This results in a series of flows for each type of institution attended (ED\_Q020). For example: if a respondent attended high school and university, we would ask ED\_Q021 to ED\_Q026 and ED\_Q130 to ED\_Q175. If another attended community college and then a business or commercial school we would ask ED\_Q030 to ED\_Q070.

If ED\_Q005 = “Yes” (attended an educational institution in the reference year), and flows for attending all institutions have been completed, ED\_Q150 asks about any other degrees, certificates or diplomas received during the reference year. This identifies situations where a respondent received a degree in the reference year although the program finished the previous year.

Without ED\_Q150, these "degrees" would not be recorded. Similarly, if ED\_Q005 = “No” then ED\_Q185 will also pick up these hidden "degrees", that is degrees or certificates awarded after the year that the respondent attended the institution.

The second series of questions (ED\_Q300 to ED\_Q350) deals with job-related “training courses”. For the purpose of the questionnaire, training activities such as courses, seminars, workshops, conferences and forums are covered by these questions.

ED\_C001:     If Hhinfo.studnt59 = 1                             go to ED\_Q001  
              If Hhinfo.studnt59 = 2                             go to ED\_Q005

?ED\_Q001:     **Based on our interview of a year ago, [respondent] was attending a school, college or university in December [previous year]. Is this correct?**

**Based on our interview of a year ago, you were attending a school, college or university in December [previous year]. Is this correct?**

1.     Yes
2.     No
8.     Refuse

9. Don't know

go to ED\_Q005

?ED\_Q005: **Did [respondent] attend a school, college or university in [reference year]? Only include attendance in programs taken to obtain a certificate, diploma or degree from a recognized institution.**

**Did you attend a school, college or university in [reference year]? Only include attendance in programs taken to obtain a certificate, diploma or degree from a recognized institution.**

INTERVIEWER: Do not include courses taken for leisure, recreation or personal interest.

1. Yes
2. No
8. Refuse
9. Don't know

If Yes go to ED\_Q020

Otherwise go to ED\_Q185

?ED\_Q020: **What type of school did he attend? Was it a(n)**

**What type of school did she attend? Was it a(n)**

**What type of school did you attend? Was it a(n)**

INTERVIEWER: Mark all that apply but select only one response per school, i.e. a place should not be listed twice because it is a trade school, but could also be called a community college.

1. **High school**
2. **Community college or institute of applied arts and technology**
3. **Business or commercial school**
4. **Trade or vocational school**
5. **CEGEP**
6. **University**
8. Refuse
9. Don't know

If answered "High school" go to ED\_Q021  
Otherwise go to ED\_N027

?ED\_Q021: **In [reference year], during which months did he attend high school?**

**In [reference year], during which months did she attend high school?**

**In [reference year], during which months did you attend high school?**

INTERVIEWER: Select all months that apply

- |              |                |
|--------------|----------------|
| 01. January  | 07. July       |
| 02. February | 08. August     |
| 03. March    | 09. September  |
| 04. April    | 10. October    |
| 05. May      | 11. November   |
| 06. June     | 12. December   |
| 98. Refuse   | 99. Don't know |

go to ED\_Q021A

?ED\_Q021A: **In [reference year], how many weeks did he attend high school?**

**In [reference year], how many weeks did she attend high school?**

**In [reference year], how many weeks did you attend high school?**

INTERVIEWER: If respondent not sure, probe for best estimate

Hard range: minimum: 1.00  
maximum: 52.00

If amount entered is >  
(no. of months from ED\_Q021 X 5 weeks) go to ED\_E021A  
Otherwise go to ED\_Q022

ED\_E021A: **Based on the months reported in the previous question, the computer has calculated the maximum number of weeks possible as [calculation]. Should we review the months reported?**

?ED\_Q022: **On average, how many hours per week was that?**

INTERVIEWER: If respondent not sure, probe for best estimate

Hard range: minimum: 1.00  
maximum: 168.00

Soft range: maximum: 50.00

go to ED\_Q022A

ED\_Q022A: **Was he considered a full-time or part-time student?**

**Was she considered a full-time or part-time student?**

**Were you considered a full-time or part-time student?**

1. Full time
2. Part time
3. Some of each
8. Refuse
9. Don't know

go to ED\_C023

ED\_C023: If age >19, go to ED\_Q023  
Otherwise, go to ED\_Q025

?ED\_Q023: **When he enrolled in this high school program, did he have objectives related to a current or future job?**

**When she enrolled in this high school program, did she have objectives related to a current or future job?**

**When you enrolled in this high school program, did you have objectives related to a current or future job?**

1. Yes
2. No
8. Refuse
9. Don't know

go to ED\_C024

ED\_C024: If DA\_Q005 = Yes or DA\_Q010 = Yes or DA\_Q015 = Yes or

DA\_Q025 = Yes or DA\_Q030 <> empty or DA\_Q040 <> empty,  
go to ED\_Q024  
Otherwise, go to ED\_Q025

?ED\_Q024: **Did an employer provide any support while he was attending high school? For example by providing or paying for the training, allowing a flexible work schedule, providing transportation or any other type of support?**

**Did an employer provide any support while she was attending high school? For example by providing or paying for the training, allowing a flexible work schedule, providing transportation or any other type of support?**

**Did an employer provide any support while you were attending high school? For example by providing or paying for the training, allowing a flexible work schedule, providing transportation or any other type of support?**

1. Yes
2. No
8. Refuse
9. Don't know

go to ED\_Q025

ED\_Q025: **Did he complete high school in [reference year]?**

**Did she complete high school in [reference year]?**

**Did you complete high school in [reference year]?**

1. Yes
2. No
8. Refuse
9. Don't know

If No go to ED\_Q026

Otherwise go to ED\_N027

ED\_Q026: **What is the main reason he did not complete high school?**

**What is the main reason she did not complete high school?**

**What is the main reason you did not complete high school?**

01. Still attending school
02. No main reason
03. Bored with school
04. Problems with school work
05. Teacher problems
06. Bad results at school
07. Expelled from school
08. Skipped classes
09. Pregnancy/take care of children
10. Marriage
11. Lack of time
12. Problems at home
13. Drug and alcohol problems
14. To help at home
15. Own illness, disability or accident
16. Had to work/financial reasons
17. Preferred work to school
18. Other reasons
98. Refuse
99. Don't know

go to ED\_N027

ED\_N027: INTERVIEWER: The following series of questions relate to education programs taken during [reference year]. Only include programs taken to obtain a certificate, diploma or degree from a recognized institution.

Press <Enter> to continue

go to next of ED\_Q030, Q055, Q080, Q105, Q130 or Q150  
depending on answers(s) marked in ED\_Q020;  
or if ED\_Q020 = R, DK go to ED\_Q185

?ED\_Q030: **In [reference year], during which months did he attend the community college or institute?**

**In [reference year], during which months did she attend the community college or institute?**

**In [reference year], during which months did you attend the community college or institute?**

INTERVIEWER: Select all months that apply

- |             |          |
|-------------|----------|
| 01. January | 07. July |
|-------------|----------|

- |              |                |
|--------------|----------------|
| 02. February | 08. August     |
| 03. March    | 09. September  |
| 04. April    | 10. October    |
| 05. May      | 11. November   |
| 06. June     | 12. December   |
| 98. Refuse   | 99. Don't know |

go to ED\_Q032

?ED\_Q032: **In [reference year], how many weeks did he attend this community college or institute?**

**In [reference year], how many weeks did she attend this community college or institute?**

**In [reference year], how many weeks did you attend this community college or institute?**

INTERVIEWER: If respondent not sure, probe for best estimate

Hard range:   minimum:       1.00  
                   maximum:       52.00

If amount entered is >  
 (no. of months from ED\_Q030 X 5 weeks) go to ED\_E032  
 Otherwise go to ED\_Q033

ED\_E032: **Based on the months reported in the previous question, the computer has calculated the maximum number of weeks possible as [calculation]. Should we review the months reported?**

?ED\_Q033: **On average, how many hours per week was that?**

INTERVIEWER: If respondent not sure, probe for best estimate

Hard range:   minimum:       1.00  
                   maximum:       168.00

Soft range:   maximum:       50.00

go to ED\_Q033A

ED\_Q033A: **Was he considered a full-time or part-time student?**

**Was she considered a full-time or part-time student?**



**Were you considered a full-time or part-time student?**

1. Full time
2. Part time
3. Some of each
8. Refuse
9. Don't know

go to ED\_Q034

?ED\_Q034: **When he enrolled in this community college or institute program, did he have objectives related to a current or future job?**

**When she enrolled in this community college or institute program, did she have objectives related to a current or future job?**

**When you enrolled in this community college or institute program, did you have objectives related to a current or future job?**

1. Yes
2. No
8. Refuse
9. Don't know

go to ED\_Q035

ED\_Q035: **What was the major field of study or specialization?**

Maximum: 48 bytes

go to ED\_Q040

ED\_Q040: **What was the main reason for choosing this field of study or specialization?**

1. **To prepare for first career**
2. **To change career**
3. **To improve career**
4. **To improve earnings**
5. **To improve knowledge**
6. **Because of interest in the subject**
7. Other (specify)

8. Refuse
9. Don't know

If answered "Other"            go to ED\_Q040S  
Otherwise                        go to ED\_C042

ED\_Q040S: INTERVIEWER:    Specify

Maximum: 80 bytes

go to ED\_C042

ED\_C042:    If DA\_Q005 = Yes or DA\_Q010 = Yes or DA\_Q015 = Yes or  
DA\_Q025 = Yes or DA\_Q030 <> empty or DA\_Q040 <> empty,  
go to ED\_Q042  
Otherwise, go to ED\_Q043

?ED\_Q042:    **Did an employer provide any support while he was attending  
this community college or institute? For example by providing  
or paying for the training, allowing a flexible work schedule,  
providing transportation or any other type of support?**

**Did an employer provide any support while she was attending  
this community college or institute? For example by providing  
or paying for the training, allowing a flexible work schedule,  
providing transportation or any other type of support?**

**Did an employer provide any support while you were attending  
this community college or institute? For example by providing  
or paying for the training, allowing a flexible work schedule,  
providing transportation or any other type of support?**

1. Yes
2. No
8. Refuse
9. Don't know

go to ED\_Q043

ED\_Q043:    **Did he receive any certificates or diplomas from this  
community college or institute of applied arts and technology  
in [reference year]?**

**Did she receive any certificates or diplomas from this  
community college or institute of applied arts and technology  
in [reference year]?**

**Did you receive any certificates or diplomas from this community college or institute of applied arts and technology in [reference year]?**

INTERVIEWER: Only include certificates, diplomas or degrees from a recognized institution that resulted in graduation from a program. Do not include certificates, diplomas from single courses.

1. Yes
2. No
8. Refuse
9. Don't know

If Yes go to ED\_Q045  
Otherwise go to next of ED\_Q055, Q080, Q105, Q130 or Q150 depending on answer(s) marked in ED\_Q020

?ED\_Q045: **Overall, how long did it take him to complete this program?**

**Overall, how long did it take her to complete this program?**

**Overall, how long did it take you to complete this program?**

1. Answer given in months
2. Answer given in years
8. Refuse
9. Don't know

If Answer given in months go to ED\_N045  
If Answer given in years go to ED\_N050  
Otherwise go to next of ED\_Q055, Q080, Q105, Q130 or Q150 depending on answers(s) marked in ED\_Q020

ED\_N045: INTERVIEWER: Enter the number of months it took to complete this program

Hard range: minimum: 1  
maximum: 95

go to next of ED\_Q055, Q080, Q105, Q130 or Q150 depending on answers(s) marked in ED\_Q020

ED\_N050: INTERVIEWER: Enter the number of years it took to complete this program

Hard range: minimum: 1  
maximum: 7

go to next of ED\_Q055, Q080, Q105, Q130 or Q150 depending on answers(s) marked in ED\_Q020

?ED\_Q055: **In [reference year], during which months did he attend the business or commercial school?**

**In [reference year], during which months did she attend the business or commercial school?**

**In [reference year], during which months did you attend the business or commercial school?**

INTERVIEWER: Select all months that apply

- |              |                |
|--------------|----------------|
| 01. January  | 07. July       |
| 02. February | 08. August     |
| 03. March    | 09. September  |
| 04. April    | 10. October    |
| 05. May      | 11. November   |
| 06. June     | 12. December   |
| 98. Refuse   | 99. Don't know |

go to ED\_Q057

?ED\_Q057: **In [reference year], how many weeks did he attend this business or commercial school?**

**In [reference year], how many weeks did she attend this business or commercial school?**

**In [reference year], how many weeks did you attend this business or commercial school?**

INTERVIEWER: If respondent not sure, probe for best estimate

Hard range: minimum: 1.00  
maximum: 52.00

If amount entered is >  
(no. of months from ED\_Q055 X 5 weeks) go to ED\_E057

Otherwise

go to ED\_Q058

ED\_E057: **Based on the months reported in the previous question, the computer has calculated the maximum number of weeks possible as [calculation]. Should we review the months reported?**

?ED\_Q058: **On average, how many hours per week was that?**

INTERVIEWER: If respondent not sure, probe for best estimate

Hard range:   minimum:       1.00  
                  maximum:      168.00

Soft range:    maximum:      50.00

go to ED\_Q058A

ED\_Q058A: **Was he considered a full-time or part-time student?**

**Was she considered a full-time or part-time student?**

**Were you considered a full-time or part-time student?**

1. Full time
2. Part time
3. Some of each
8. Refuse
9. Don't know

go to ED\_Q059

?ED\_Q059: **When he enrolled in this business or commercial school program, did he have objectives related to a current or future job?**

**When she enrolled in this business or commercial school program, did she have objectives related to a current or future job?**

**When you enrolled in this business or commercial school program, did you have objectives related to a current or future job?**

1. Yes
2. No

8. Refuse
9. Don't know

go to ED\_Q060

ED\_Q060: **What was the major field of study or specialization?**

Maximum: 48 bytes

go to ED\_Q065

ED\_Q065: **What was the main reason for choosing this field of study or specialization?**

1. **To prepare for first career**
2. **To change career**
3. **To improve career**
4. **To improve earnings**
5. **To improve knowledge**
6. **Because of interest in the subject**
7. Other (specify)
8. Refuse
9. Don't know

If answered "Other"                      go to ED\_Q065S  
 Otherwise                                      go to ED\_C067

ED\_Q065S: INTERVIEWER:    Specify

Maximum: 80 bytes

go to ED\_C067

ED\_C067: If DA\_Q005 = Yes or DA\_Q010 = Yes or DA\_Q015 = Yes or  
 DA\_Q025 = Yes or DA\_Q030 <> empty or DA\_Q040 <> empty,  
 go to ED\_Q067  
 Otherwise, go to ED\_Q068

?ED\_Q067: **Did an employer provide any support while he was attending this business or commercial school? For example by providing or paying for the training, allowing a flexible work schedule, providing transportation or any other type of support?**

**Did an employer provide any support while she was this business or commercial school? For example by providing or paying for the training, allowing a flexible work schedule,**

**providing transportation or any other type of support?**

**Did an employer provide any support while you were attending this business or commercial school? For example by providing or paying for the training, allowing a flexible work schedule, providing transportation or any other type of support?**

1. Yes
2. No
8. Refuse
9. Don't know

go to ED\_Q068

**ED\_Q068: Did he receive any certificates or diplomas from this business or commercial school in [reference year]?**

**Did she receive any certificates or diplomas from this business or commercial school in [reference year]?**

**Did you receive any certificates or diplomas from this business or commercial school in [reference year]?**

INTERVIEWER: Only include certificates, diplomas or degrees from a recognized institution that resulted in graduation from a program. Do not include certificates, diplomas from single courses.

1. Yes
2. No
8. Refuse
9. Don't know

If Yes go to ED\_Q070  
Otherwise go to next of ED\_Q080, Q105, Q130 or Q150 depending on answer(s) marked in ED\_Q020

**?ED\_Q070: Overall, how long did it take him to complete this program?**

**Overall, how long did it take her to complete this program?**

**Overall, how long did it take you to complete this program?**

1. Answer given in months

- 2 Answer given in years
- 8. Refuse
- 9. Don't know

If Answer given in months go to ED\_N070  
 If Answer given in years go to ED\_N075  
 Otherwise go to next of ED\_Q080, Q105, Q130 or Q150 depending on answers(s) marked in ED\_Q020

ED\_N070: INTERVIEWER: Enter the number of months it took to complete this program

Hard range: minimum: 1  
 maximum: 95

go to next of ED\_Q080, Q105, Q130 or Q150 depending on answers(s) marked in ED\_Q020

ED\_N075: INTERVIEWER: Enter the number of years it took to complete this program

Hard range: minimum: 1  
 maximum: 7

go to next of ED\_Q080, Q105, Q130 or Q150 depending on answers(s) marked in ED\_Q020

?ED\_Q080: **In [reference year], during which months did he attend the trade or vocational school ?**

**In [reference year], during which months did she attend the trade or vocational school?**

**In [reference year], during which months did you attend the trade or vocational school?**

INTERVIEWER: Select all months that apply

- |              |                |
|--------------|----------------|
| 01. January  | 07. July       |
| 02. February | 08. August     |
| 03. March    | 09. September  |
| 04. April    | 10. October    |
| 05. May      | 11. November   |
| 06. June     | 12. December   |
| 98. Refuse   | 99. Don't know |



go to ED\_Q082

?ED\_Q082: **In [reference year], how many weeks did he attend this trade or vocational school?**

**In [reference year], how many weeks did she attend this trade or vocational school?**

**In [reference year], how many weeks did you attend this trade or vocational school?**

INTERVIEWER: If respondent not sure, probe for best estimate

Hard range:   minimum:       1.00  
                  maximum:       52.00

If amount entered >  
(no. of months from ED\_Q080) X 5 weeks   go to ED\_E082  
Otherwise                                        go to ED\_Q083

ED\_E082: **Based on the months reported in the previous question, the computer has calculated the maximum number of weeks possible as [calculation]. Should we review the months reported?**

?ED\_Q083: **On average, how many hours per week was that?**

INTERVIEWER: If respondent not sure, probe for best estimate

Hard range:   minimum:       1.00  
                  maximum:       168.00

Soft range:    maximum:       50.00

go to ED\_Q083A

ED\_Q083A: **Was he considered a full-time or part-time student?**

**Was she considered a full-time or part-time student?**

**Were you considered a full-time or part-time student?**

1. Full time
2. Part time
3. Some of each
8. Refuse

9. Don't know

go to ED\_Q084

?ED\_Q084: **When he enrolled in this trade or vocational school program, did he have objectives related to a current or future job?**

**When she enrolled in this trade or vocational school program, did she have objectives related to a current or future job?**

**When you enrolled in this trade or vocational school program, did you have objectives related to a current or future job?**

1. Yes
2. No
8. Refuse
9. Don't know

go to ED\_Q085

ED\_Q085: **What was the major field of study or specialization?**

Maximum: 48 bytes

go to ED\_Q090

ED\_Q090: **What was the main reason for choosing this field of study or specialization?**

1. **To prepare for first career**
2. **To change career**
3. **To improve career**
4. **To improve earnings**
5. **To improve knowledge**
6. **Because of interest in the subject**
7. Other (specify)
8. Refuse
9. Don't know

If answered "Other" go to ED\_Q090S

Otherwise go to ED\_C092

ED\_Q090S: INTERVIEWER: Specify

Maximum: 80 bytes

go to ED\_C092

ED\_C092: If DA\_Q005 = Yes or DA\_Q010 = Yes or DA\_Q015 = Yes or DA\_Q025 = Yes or DA\_Q030 <> empty or DA\_Q040 <> empty, go to ED\_Q092  
Otherwise, go to ED\_Q093

?ED\_Q092: **Did an employer provide any support while he was attending this trade or vocational school? For example by providing or paying for the training, allowing a flexible work schedule, providing transportation or any other type of support?**

**Did an employer provide any support while she was attending this trade or vocational school? For example by providing or paying for the training, allowing a flexible work schedule, providing transportation or any other type of support?**

**Did an employer provide any support while you were attending this trade or vocational school? For example by providing or paying for the training, allowing a flexible work schedule, providing transportation or any other type of support?**

1. Yes
2. No
8. Refuse
9. Don't know

go to ED\_Q093

ED\_Q093: **Did he receive any certificates or diplomas from this trade or vocational school in [reference year]?**

**Did she receive any certificates or diplomas from this trade or vocational school in [reference year]?**

**Did you receive any certificates or diplomas from this trade or vocational school in [reference year]?**

INTERVIEWER: Only include certificates, diplomas or degrees from a recognized institution that resulted in graduation from a program. Do not include certificates, diplomas from single courses.

1. Yes
2. No

- 8. Refuse
- 9. Don't know

If Yes go to ED\_Q095  
 Otherwise go to next of ED\_Q105, Q130 or Q150 depending on answer(s) marked in ED\_Q020

?ED\_Q095: **Overall, how long did it take him to complete this program?**

**Overall, how long did it take her to complete this program?**

**Overall, how long did it take you to complete this program?**

- 1. Answer given in months
- 2. Answer given in years
- 8. Refuse
- 9. Don't know

If Answer given in months go to ED\_N095  
 If Answer given in years go to ED\_N100  
 Otherwise go to next of ED\_Q105, Q130 or Q150 depending on answers(s) marked in ED\_Q020

ED\_N095: INTERVIEWER: Enter the number of months it took to complete this program

Hard range: minimum: 1  
 maximum: 95

go to next of ED\_Q105, Q130 or Q150 depending on answers(s) marked in ED\_Q020

ED\_N100: INTERVIEWER: Enter the number of years it took to complete this program

Hard range: minimum: 1  
 maximum: 7

go to next of ED\_Q105, Q130 or Q150 depending on answers(s) marked in ED\_Q020

?ED\_Q105: **In [reference year], during which months did he attend the CEGEP?**

**In [reference year], during which months did she attend the CEGEP?**

**In [reference year], during which months did you attend the CEGEP?**

INTERVIEWER: Select all months that apply

- |              |                |
|--------------|----------------|
| 01. January  | 07. July       |
| 02. February | 08. August     |
| 03. March    | 09. September  |
| 04. April    | 10. October    |
| 05. May      | 11. November   |
| 06. June     | 12. December   |
| 98. Refuse   | 99. Don't know |

go to ED\_Q107

?ED\_Q107: **In [reference year], how many weeks did he attend this CEGEP?**

**In [reference year], how many weeks did she attend this CEGEP?**

**In [reference year], how many weeks did you attend this CEGEP?**

INTERVIEWER: If respondent not sure, probe for best estimate

Hard range: minimum: 1.00  
maximum: 52.00

If amount entered >

(no. of months from ED\_Q105) X 5 weeks go to ED\_E107

Otherwise go to ED\_Q108

ED\_E107: **Based on the months reported in the previous question, the computer has calculated the maximum number of weeks possible as [calculation]. Should we review the months reported?**

?ED\_Q108: **On average, how many hours per week was that?**

INTERVIEWER: If respondent not sure, probe for best estimate

Hard range: minimum: 1.00  
maximum: 168.00

Soft range: maximum: 50.00

go to ED\_Q108A

ED\_Q108A: **Was he considered a full-time or part-time student?**

**Was she considered a full-time or part-time student?**

**Were you considered a full-time or part-time student?**

1. Full time
2. Part time
3. Some of each
8. Refuse
9. Don't know

go to ED\_Q109

?ED\_Q109: **When he enrolled in this CEGEP program, did he have objectives related to a current or future job?**

**When she enrolled in this CEGEP program, did she have objectives related to a current or future job?**

**When you enrolled in this CEGEP program, did you have objectives related to a current or future job?**

1. Yes
2. No
8. Refuse
9. Don't know

go to ED\_Q110

ED\_Q110: **What was the major field of study or specialization?**

Maximum: 48 bytes

go to ED\_Q115

ED\_Q115: **What was the main reason for choosing this field of study or specialization?**

1. **To prepare for first career**
2. **To change career**

3. **To improve career**
4. **To improve earnings**
5. **To improve knowledge**
6. **Because of interest in the subject**
7. Other (specify)
8. Refuse
9. Don't know

If answered "Other"                    go to ED\_Q115S  
 Otherwise                                go to ED\_C117

ED\_Q115S: INTERVIEWER:    Specify

Maximum: 80 bytes

go to ED\_C117

ED\_C117:    If DA\_Q005 = Yes or DA\_Q010 = Yes or DA\_Q015 = Yes or  
 DA\_Q025 = Yes or DA\_Q030 <> empty or DA\_Q040 <> empty,  
 go to ED\_Q117  
 Otherwise, go to ED\_Q118

?ED\_Q117: **Did an employer provide any support while he was attending  
 this CEGEP? For example by providing or paying for the  
 training, allowing a flexible work schedule, providing  
 transportation or any other type of support?**

**Did an employer provide any support while she was attending  
 this CEGEP? For example by providing or paying for the  
 training, allowing a flexible work schedule, providing  
 transportation or any other type of support?**

**Did an employer provide any support while you were attending  
 this CEGEP? For example by providing or paying for the  
 training, allowing a flexible work schedule, providing  
 transportation or any other type of support?**

1.    Yes
2.    No
8.    Refuse
9.    Don't know

go to ED\_Q118

ED\_Q118: **Did he receive any certificates or diplomas from this CEGEP  
 in [reference year]?**

**Did she receive any certificates or diplomas from this CEGEP in [reference year]?**

**Did you receive any certificates or diplomas from this CEGEP in [reference year]?**

INTERVIEWER: Only include certificates, diplomas or degrees from a recognized institution that resulted in graduation from a program. Do not include certificates, diplomas from single courses.

1. Yes
2. No
8. Refuse
9. Don't know

If Yes go to ED\_Q120  
Otherwise go to next of ED\_Q130 or Q150 depending on answer(s) marked in ED\_Q020

?ED\_Q120: **Overall, how long did it take him to complete this program?**

**Overall, how long did it take her to complete this program?**

**Overall, how long did it take you to complete this program?**

1. Answer given in months
2. Answer given in years
8. Refuse
9. Don't know

If Answer given in months go to ED\_N120  
If Answer given in years go to ED\_N125  
Otherwise go to next of ED\_Q130 or Q150 depending on answers(s) marked in ED\_Q020

ED\_N120: INTERVIEWER: Enter the number of months it took to complete this program

Hard range: minimum: 1  
maximum: 95



go to next of ED\_Q130 or Q150 depending on answers(s) marked in ED\_Q020

ED\_N125: INTERVIEWER: Enter the number of years it took to complete this program

Hard range: minimum: 1  
maximum: 7

go to next of ED\_Q130 or Q150 depending on answers(s) marked in ED\_Q020

?ED\_Q130: **In [reference year], during which months did he attend university?**

**In [reference year], during which months did she attend university?**

**In [reference year], during which months did you attend university?**

INTERVIEWER: Select all months that apply

- |              |                |
|--------------|----------------|
| 01. January  | 07. July       |
| 02. February | 08. August     |
| 03. March    | 09. September  |
| 04. April    | 10. October    |
| 05. May      | 11. November   |
| 06. June     | 12. December   |
| 98. Refuse   | 99. Don't know |

go to ED\_Q132

?ED\_Q132: **In [reference year], how many weeks did he attend university?**

**In [reference year], how many weeks did she attend university?**

**In [reference year], how many weeks did you attend university?**

INTERVIEWER: If respondent not sure, probe for best estimate

Hard range: minimum: 1.00  
maximum: 52.00

If amount entered >  
(no. of months from ED\_Q130) X 5 weeks go to ED\_E132

Otherwise

go to ED\_Q133

ED\_E132: **Based on the months reported in the previous question, the computer has calculated the maximum number of weeks possible as [calculation]. Should we review the months reported?**

?ED\_Q133: **On average, how many hours per week was that?**

INTERVIEWER: If respondent not sure, probe for best estimate

Hard range:   minimum:       1.00  
                  maximum:      168.00

Soft range:   maximum:       50.00

go to ED\_Q134

ED\_Q134: **Was he considered a full-time or part-time student?**

**Was she considered a full-time or part-time student?**

**Were you considered a full-time or part-time student?**

1. Full time
2. Part time
3. Some of each
8. Refuse
9. Don't know

go to ED\_Q135

ED\_Q135: **During [reference year], what was the highest university level he was enrolled in?**

**During [reference year], what was the highest university level she was enrolled in?**

**During [reference year], what was the highest university level you were enrolled in?**

1. University certificate/diploma below bachelor degree
2. Bachelor's degree(s) (e.g. B.A., B.Sc., B.Ed., B.Eng.)
3. University certificate/diploma above bachelor level but below master level
4. First professional degree in law, dentistry, veterinary

- medicine, optometry
- 5. Master's degree(s) (e.g. M.A., M.Sc., M.Ed., M.B.A., M.Eng.)
- 6. Ph.D. degree (e.g. Doctorate, D.Sc., D.Ed.)
- 8. Refuse
- 9. Don't know

go to ED\_Q138

?ED\_Q138: **When he enrolled in this university program, did he have objectives related to a current or future job?**

**When she enrolled in this university program, did she have objectives related to a current or future job?**

**When you enrolled in this university program, did you have objectives related to a current or future job?**

- 1. Yes
- 2. No
- 8. Refuse
- 9. Don't know

go to ED\_Q140

ED\_Q140: **What was the major field of study or specialization?**

Maximum: 48 bytes

go to ED\_Q145

ED\_Q145: **What was the main reason for choosing this field of study or specialization?**

- 1. **To prepare for first career**
- 2. **To change career**
- 3. **To improve career**
- 4. **To improve earnings**
- 5. **To improve knowledge**
- 6. **Because of interest in the subject**
- 7. Other (specify)
- 8. Refuse
- 9. Don't know

If answered "Other"

go to ED\_Q145S

Otherwise

go to ED\_C146

ED\_Q145S: INTERVIEWER: Specify

Maximum: 80 bytes

go to ED\_C146

ED\_C146: If DA\_Q005 = Yes or DA\_Q010 = Yes or DA\_Q015 = Yes or  
DA\_Q025 = Yes or DA\_Q030 <> empty or DA\_Q040 <> empty,  
go to ED\_Q146  
Otherwise, go to ED\_Q147

?ED\_Q146: **Did an employer provide any support while he was attending university? For example by providing or paying for the training, allowing a flexible work schedule, providing transportation or any other type of support?**

**Did an employer provide any support while she was attending university? For example by providing or paying for the training, allowing a flexible work schedule, providing transportation or any other type of support?**

**Did an employer provide any support while you were attending university? For example by providing or paying for the training, allowing a flexible work schedule, providing transportation or any other type of support?**

1. Yes
2. No
8. Refuse
9. Don't know

go to ED\_Q147

ED\_Q147: **Did he graduate from this university program in [reference year]?**

**Did she graduate from this university program in [reference year]?**

**Did you graduate from this university program in [reference year]?**

INTERVIEWER: Only include certificates, diplomas or degrees from a recognized institution that resulted in graduation from a program. Do

not include certificates, diplomas from single courses.

1. Yes
2. No
8. Refuse
9. Don't know

If Yes go to ED\_Q148  
Otherwise go to ED\_Q150

ED\_Q148: **Overall, how long did it take him to complete this program?**

**Overall, how long did it take her to complete this program?**

**Overall, how long did it take you to complete this program?**

1. Answer given in months
2. Answer given in years
8. Refuse
9. Don't know

If Answer given in months go to ED\_N149  
If Answer given in years go to ED\_N149A  
Otherwise go to ED\_Q150

ED\_N149: INTERVIEWER: Enter the number of months it took to complete this program

Hard range: minimum: 1  
maximum: 95

go to ED\_Q150

ED\_N149A: INTERVIEWER: Enter the number of years it took to complete this program

Hard range: minimum: 1  
maximum: 15

go to ED\_Q150

ED\_Q150: **Did he receive any other degrees, certificates or diplomas in [reference year]?**

**Did she receive any other degrees, certificates or diplomas in**

[reference year]?

**Did you receive any other degrees, certificates or diplomas in [reference year]?**

INTERVIEWER: Only include certificates, diplomas or degrees from a recognized institution that resulted in graduation from a program. Do not include certificates, diplomas from single courses.

1. Yes
2. No
8. Refuse
9. Don't know

If Yes go to ED\_Q155  
Otherwise go to ED\_C300

?ED\_Q155: **From what kind of institution did he receive this diploma?  
Was it a . . .**

**From what kind of institution did she receive this diploma?  
Was it a . . .**

**From what kind of institution did you receive this diploma?  
Was it a . . .**

1. **High school** go to ED\_C163
2. **Community college or institute of applied arts and technology** go to ED\_Q163
3. **Business or commercial school** go to ED\_Q163
4. **Trade or vocational school** go to ED\_Q163
5. **CEGEP** go to ED\_Q163
6. **University** go to ED\_Q160
8. Refuse go to ED\_C300
9. Don't know go to ED\_C300

ED\_Q160: **What degree, certificate or diploma did he receive?**

**What degree, certificate or diploma did she receive?**

**What degree, certificate or diploma did you receive?**

1. University certificate/diploma below bachelor degree
2. Bachelor's degree(s) (e.g. B.A., B.Sc., B.Ed., B.Eng.)

3. University certificate/diploma above bachelor level but below master level
4. First professional degree in law, dentistry, veterinary medicine, optometry
5. Master's degree(s) (e.g. M.A., M.Sc., M.Ed., M.B.A., M.Eng.)
6. Ph.D. degree (e.g. Doctorate, D.Sc., D.Ed.)
8. Refuse
9. Don't know

go to ED\_Q163

ED\_C163: If age > 19, go to ED\_Q163  
Otherwise, go to ED\_C300

?ED\_Q163: **When he enrolled in this program, did he have objectives related to a current or future job?**

**When she enrolled in this program, did she have objectives related to a current or future job?**

**When you enrolled in this program, did you have objectives related to a current or future job?**

1. Yes
2. No
8. Refuse
9. Don't know

If ED\_Q155 = 1 "High school" or  
if ED\_Q190 = 1 "High school" go to ED\_C172  
Otherwise go to ED\_Q165

ED\_Q165: **What was the major field of study or specialization?**

Maximum: 48 bytes

go to ED\_Q170

ED\_Q170: **What was the main reason for choosing this field of study or specialization?**

1. **To prepare for first career**
2. **To change career**
3. **To improve career**

4. **To improve earnings**
5. **To improve knowledge**
6. **Because of interest in the subject**
7. Other (specify)
8. Refuse
9. Don't know

If answered "Other"                    go to ED\_Q170S  
 Otherwise                                    go to ED\_C172

ED\_Q170S: INTERVIEWER:    Specify

Maximum: 80 bytes

go to ED\_C172

ED\_C172:    If DA\_Q005 = Yes or DA\_Q010 = Yes or DA\_Q015 = Yes or  
 DA\_Q025 = Yes or DA\_Q030 <> empty or DA\_Q040 <> empty,  
 go to ED\_Q172  
 Otherwise, go to ED\_Q175

?ED\_Q172: **Did an employer provide any support while he was attending  
 this program? For example by providing or paying for the  
 training, allowing a flexible work schedule, providing  
 transportation or any other type of support?**

**Did an employer provide any support while she was attending  
 this program? For example by providing or paying for the  
 training, allowing a flexible work schedule, providing  
 transportation or any other type of support?**

**Did an employer provide any support while you were attending  
 this program? For example by providing or paying for the  
 training, allowing a flexible work schedule, providing  
 transportation or any other type of support?**

1. Yes
2. No
8. Refuse
9. Don't know

If ED\_Q155 = 1 "High school" or  
 if ED\_Q190 = 1 "High school"                    go to ED\_C300  
 Otherwise    go to ED\_Q175

ED\_Q175: **Overall, how long did it take him to complete this program?**



**Overall, how long did it take her to complete this program?**

**Overall, how long did it take you to complete this program?**

1. Answer given in months
2. Answer given in years
8. Refuse
9. Don't know

If Answer given in months go to ED\_N175  
If Answer given in years go to ED\_N180  
Otherwise go to ED\_C300

ED\_N175: INTERVIEWER: Enter the number of months it took to complete this program

Hard range: minimum: 1  
maximum: 95

go to ED\_Q182

ED\_N180: INTERVIEWER: Enter the number of years it took to complete this program

Hard range: minimum: 1  
maximum: 7

go to ED\_Q182

ED\_Q182: **Was this full time, part time or some of each?**

1. Full time
2. Part time
3. Some of each
8. Refuse
9. Don't know

go to ED\_C300

ED\_Q185: **Did he receive a degree, certificate or diploma in [reference year]?**

**Did she receive a degree, certificate or diploma in [reference year]?**

**Did you receive a degree, certificate or diploma in [reference year]?**

INTERVIEWER: Only include certificates, diplomas or degrees from a recognized institution that resulted in graduation from a program. Do not include certificates, diplomas from single courses.

1. Yes
2. No
8. Refuse
9. Don't know

If Yes go to ED\_Q190  
Otherwise go to ED\_C300

?ED\_Q190: **From what kind of institution did he receive this diploma?  
Was it a . . .**

**From what kind of institution did she receive this diploma?  
Was it a . . .**

**From what kind of institution did you receive this diploma?  
Was it a . . .**

1. **High school** go to ED\_C163
2. **Community college or institute of applied arts and technology** go to ED\_Q163
3. **Business or commercial school** go to ED\_Q163
4. **Trade or vocational school** go to ED\_Q163
5. **CEGEP** go to ED\_Q163
6. **University** go to ED\_Q160
8. Refuse go to ED\_C300
9. Don't know go to ED\_C300

ED\_C300: If (ED\_Q020 = 1, 2, 3, 4, 5 or 6) or (ED\_Q150 = 1) or (ED\_Q185 = 1), then invoke the second prefill in ED\_Q300 [other than program(s) you have already mentioned];  
Otherwise, do not invoke the second prefill

go to ED\_Q300

?ED\_Q300: **In [reference year], [ other than the program(s) you have already mentioned,] did he take any courses, workshops, seminars or training related to a current or future job?**

**In [reference year], [ other than the program(s) you have already mentioned.] did she take any courses, workshops, seminars or training related to a current or future job?**

**In [reference year], [ other than the program(s) you have already mentioned.] did you take any courses, workshops, seminars or training related to a current or future job?**

1. Yes
2. No
8. Refuse
9. Don't know

If Yes go to ED\_Q305  
Otherwise go to DI\_C001

**ED\_Q305: What was the name or subject of the most important course he took in [reference year]?**

**What was the name or subject of the most important course she took in [reference year]?**

**What was the name or subject of the most important course you took in [reference year]?**

INTERVIEWER: If the respondent has a problem selecting the most important course, ask them to select the one that he or she remembers the most.

Maximum: 80 bytes

go to ED\_Q310

**ED\_Q310: What was the main reason for choosing this subject?**

1. **To prepare for first career**
2. **To change career**
3. **To improve career**
4. **To improve earnings**
5. **To improve knowledge**
6. **Because of interest in the subject**
7. Other (specify)
8. Refuse
9. Don't know

If answered "Other (specify)"      go to ED\_Q310S  
Otherwise      go to ED\_Q315

ED\_Q310S: INTERVIEWER:      Specify

Maximum:      80 bytes

go to ED\_Q315

?ED\_Q315: **During which months in [reference year] did he attend this course?**

**During which months in [reference year] did she attend this course?**

**During which months in [reference year] did you attend this course?**

INTERVIEWER:      Select all months that apply

- |                 |                   |
|-----------------|-------------------|
| 01.    January  | 07.    July       |
| 02.    February | 08.    August     |
| 03.    March    | 09.    September  |
| 04.    April    | 10.    October    |
| 05.    May      | 11.    November   |
| 06.    June     | 12.    December   |
| 98.    Refuse   | 99.    Don't know |

go to ED\_Q320

ED\_Q320: **Would it be best to describe the total time he spent in this course in terms of weeks, days or hours?**

**Would it be best to describe the total time she spent in this course in terms of weeks, days or hours?**

**Would it be best to describe the total time you spent in this course in terms of weeks, days or hours?**

- |                    |               |
|--------------------|---------------|
| 1.      Weeks      | go to ED_Q325 |
| 2.      Days       | go to ED_Q335 |
| 3.      Hours      | go to ED_Q345 |
| 8.      Refuse     | go to ED_C350 |
| 9.      Don't know | go to ED_C350 |

?ED\_Q325: **In total, how many weeks did he spend in this course in [reference year]?**

**In total, how many weeks did she spend in this course in [reference year]?**

**In total, how many weeks did you spend in this course in [reference year]?**

INTERVIEWER: If respondent not sure, probe for best estimate

Hard range:    minimum:        1.00  
                  maximum:        52.00

If amount entered >  
(no. of months from ED\_Q320) X 5 weeks    go to ED\_E325  
Otherwise    go to ED\_Q330

ED\_E325: **Based on the months reported in the previous question, the computer has calculated the maximum number of weeks possible as [calculation]. Should we review the months reported?**

?ED\_Q330: **On average, how many hours per week was that?**

INTERVIEWER: If respondent not sure, probe for best estimate

Hard range:    minimum:        1.00  
                  maximum:        168.00

Soft range:    maximum:        50.00

go to ED\_C350

?ED\_Q335: **In total, how many days did he spend in this course in [reference year]?**

**In total, how many days did she spend in this course in [reference year]?**

**In total, how many days did you spend in this course in [reference year]?**

INTERVIEWER: If respondent not sure, probe for best estimate

Hard range:    minimum:        1.00  
                  maximum:        366.00

go to ED\_Q340

?ED\_Q340: **On average, how many hours per day was that?**

INTERVIEWER: If respondent not sure, probe for best estimate

Hard range:   minimum:       1.00  
                  maximum:       24.00

go to ED\_C350

?ED\_Q345: **In total, how many hours did he spend in this course in [reference year]?**

**In total, how many hours did she spend in this course in [reference year]?**

**In total, how many hours did you spend in this course in [reference year]?**

INTERVIEWER: If respondent not sure, probe for best estimate

Hard range:   minimum:       1.00  
                  maximum:       8760.00

go to ED\_C350

ED\_C350: If DA\_Q005 = Yes or DA\_Q010 = Yes or DA\_Q015 = Yes or DA\_Q025 = Yes or DA\_Q030 <> empty or DA\_Q040 <> empty, go to ED\_Q350  
Otherwise, go to DI\_C001

?ED\_Q350: **Did an employer provide any support during this course? For example by providing or paying for the training, allowing a flexible work schedule, providing transportation or any other type of support?**

1.    Yes
2.    No
8.    Refuse
9.    Don't know

go to DI\_C001

## 5.7 DI Module

DI\_C001: all respondents go to DI\_Q005

?DI\_Q005: **In general, how would you describe [respondent's] state of health? Would you say it is . . .**

**In general, how would you describe, [respondent's] state of health? Would you say it is . . .**

**In general, how would you describe your state of health? Would you say it is . . .**

1. **Excellent ?**
2. **Very good ?**
3. **Good ?**
4. **Fair ?**
5. **Poor ?**
8. Refuse
9. Don't know

go to DI\_Q010

?DI\_Q010: **Would you describe his life as . . .**

**Would you describe her life as . . .**

**Would you describe your life as . . .**

1. **Very stressful ?**
2. **Moderately stressful ?**
3. **Rarely stressful ?**
4. **Not at all stressful ?**
5. **No opinion**
8. Refuse
9. Don't know

go to DI\_Q015

?DI\_Q015: **Does he have any difficulty hearing, seeing, communicating, walking, climbing stairs, bending, learning or doing any similar activities ?**

**Does she have any difficulty hearing, seeing, communicating, walking, climbing stairs, bending, learning or doing any similar activities ?**

**Do you have any difficulty hearing, seeing, communicating, walking, climbing stairs, bending, learning or doing any similar activities ?**

- |    |                       |                  |
|----|-----------------------|------------------|
| 1. | <b>Yes, sometimes</b> | set flgdisab = 1 |
| 2. | <b>Yes, often</b>     | set flgdisab = 1 |
| 3. | <b>No</b>             |                  |
| 8. | Refuse                |                  |
| 9. | Don't know            |                  |

go to DI\_Q020

?DI\_Q020: **Does a physical condition or mental condition or health problem reduce the amount or the kind of activity he can do at home?**

**Does a physical condition or mental condition or health problem reduce the amount or the kind of activity she can do at home?**

**Does a physical condition or mental condition or health problem reduce the amount or the kind of activity you can do at home?**

- |    |                       |                  |
|----|-----------------------|------------------|
| 1. | <b>Yes, sometimes</b> | set flgdisab = 1 |
| 2. | <b>Yes, often</b>     | set flgdisab = 1 |
| 3. | <b>No</b>             |                  |
| 8. | Refuse                |                  |
| 9. | Don't know            |                  |

go to DI\_C020

DI\_C020: If respondent is 70+ go to DI\_Q033  
If respondent is < 70 and respondent worked in [reference year]  
(flag: datecntr > 0) go to DI\_Q025  
Otherwise go to DI\_Q030

?DI\_Q025: **Does a physical condition or mental condition or health problem reduce the amount or the kind of activity he can do at work?**

**Does a physical condition or mental condition or health problem reduce the amount or the kind of activity she can do at work?**



**Does a physical condition or mental condition or health problem reduce the amount or the kind of activity you can do at work?**

- |    |                       |                  |
|----|-----------------------|------------------|
| 1. | <b>Yes, sometimes</b> | set flgdisab = 1 |
| 2. | <b>Yes, often</b>     | set flgdisab = 1 |
| 3. | <b>No</b>             |                  |
| 8. | Refuse                |                  |
| 9. | Don't know            |                  |

go to DI\_Q033

?DI\_Q030: **Does a physical condition or mental condition or health problem reduce the amount or the kind of activity he can do at a job or business or at school?**

**Does a physical condition or mental condition or health problem reduce the amount or the kind of activity she can do at a job or business or at school?**

**Does a physical condition or mental condition or health problem reduce the amount or the kind of activity you can do at a job or business or at school?**

- |    |                       |                  |
|----|-----------------------|------------------|
| 1. | <b>Yes, sometimes</b> | set flgdisab = 1 |
| 2. | <b>Yes, often</b>     | set flgdisab = 1 |
| 3. | <b>No</b>             |                  |
| 8. | Refuse                |                  |
| 9. | Don't know            |                  |

go to DI\_Q033

?DI\_Q033: **Does a physical condition or mental condition or health problem reduce the amount or the kind of activity he can do in other activities, for example, transportation or leisure?**

**Does a physical condition or mental condition or health problem reduce the amount or the kind of activity she can do in other activities, for example, transportation or leisure?**

**Does a physical condition or mental condition or health problem reduce the amount or the kind of activity you can do in other activities, for example, transportation or leisure?**

- |    |                       |                  |
|----|-----------------------|------------------|
| 1. | <b>Yes, sometimes</b> | set flgdisab = 1 |
|----|-----------------------|------------------|

2. **Yes, often** set flgdisab = 1
3. **No**
8. Refuse
9. Don't know

go to DI\_C033

DI\_C033: If flgdisab = 1 go to DI\_Q035  
Otherwise go to IN\_C001

DI\_Q035: **In what year did his condition begin?**

**In what year did her condition begin?**

**In what year did your condition begin?**

INTERVIEWER: Answer should be year the condition started. If more than one condition, indicate the year in which the first condition started.

Hard range: minimum: dob of respondent (refyear – age)  
maximum: current year

If respondent is < 70 and respondent worked in  
[reference year] (flag: datecntr > 0) go to DI\_Q040  
If respondent is 70+ go to IN\_C001  
Otherwise go to DI\_Q065

DI\_Q040: **Does his condition make it difficult for him to change jobs or to get a better job?**

**Does her condition make it difficult for her to change jobs or to get a better job?**

**Does your condition make it difficult for you to change jobs or to get a better job?**

1. Yes
2. No
8. Refuse
9. Don't know

go to DI\_Q045

DI\_Q045: **Was he satisfied with the number of weeks he worked in [reference year]?**

**Was she satisfied with the number of weeks she worked in [reference year]?**

**Were you satisfied with the number of weeks you worked in [reference year]?**

- |    |            |               |
|----|------------|---------------|
| 1. | Yes        | go to IN_C001 |
| 2. | No         | go to DI_Q050 |
| 8. | Refuse     | go to DI_Q050 |
| 9. | Don't know | go to DI_Q050 |

DI\_Q050: **In [reference year], would he have preferred to work more or less than he did?**

**In [reference year], would she have preferred to work more or less than she did?**

**In [reference year], would you have preferred to work more or less than you did?**

- |    |            |               |
|----|------------|---------------|
| 1. | More       | go to DI_Q055 |
| 2. | Less       | go to DI_Q060 |
| 8. | Refuse     | go to IN_C001 |
| 9. | Don't know | go to IN_C001 |

DI\_Q055: **Was it his condition that prevented him from working more?**

**Was it her condition that prevented her from working more?**

**Was it your condition that prevented you from working more?**

- |    |            |
|----|------------|
| 1. | Yes        |
| 2. | No         |
| 8. | Refuse     |
| 9. | Don't know |

go to IN\_C001

DI\_Q060: **Was it because of his condition that he wanted to work less?**

**Was it because of her condition that she wanted to work less?**

**Was it because of your condition that you wanted to work less?**

- |    |     |
|----|-----|
| 1. | Yes |
|----|-----|

- 2. No
- 8. Refuse
- 9. Don't know

go to IN\_C001

DI\_Q065: **Does his condition completely prevent him from working at a job or business or from looking for work?**

**Does her condition completely prevent her from working at a job or business or from looking for work?**

**Does your condition completely prevent you from working at a job or business or from looking for work?**

- 1. Yes
- 2. No
- 8. Refuse
- 9. Don't know

go to or IN\_C001

## 6. Income interview

IN\_C001: If hhinfo.taxprm59 = 1 or 5, go to PT\_C001  
 If hhinfo.taxprm59 = 0, 2, 3 or Blank, go to IN\_Q005  
 If hhinfo-taxprm59 = 4, go to IN\_Q015

Taxperm = 0 question was not asked  
 Taxperm = 1 tax permission was given  
 Taxperm = 2 tax permission was refused  
 Taxperm = 3 does not file a tax return  
 Taxperm = 4 tax permission was withdrawn  
 Taxperm = 5 refused income will do labour

IN\_Q005: **For the income portion of this survey, there are two ways of providing the information. [Respondent] can either give Statistics Canada permission to use [his] income tax records for the Survey of Labour and Income Dynamics, or we can proceed with the interview now. [Does Respondent] give permission for this survey to use [his] income tax records instead of doing an interview?**

**For the income portion of this survey, there are two ways of providing the information. [Respondent] can either give Statistics Canada permission to use [her] income tax records**

**for the Survey of Labour and Income Dynamics, or we can proceed with the interview now. [Does Respondent] give permission for this survey to use [her] income tax records instead of doing an interview?**

**For the income portion of this survey, there are two ways of providing the information. [You] can either give Statistics Canada permission to use [your] income tax records for the Survey of Labour and Income Dynamics, or we can proceed with the interview now. [Do you] give permission for this survey to use [your] income tax records instead of doing an interview?**

- |    |                            |               |
|----|----------------------------|---------------|
| 1. | Yes                        | go to PT_C001 |
| 2. | No                         | go to IN_Q015 |
| 3. | Does not file a tax return | go to IN_Q015 |

This is a mandatory question; 'Refuse' and 'Don't know' are not possible answers.

?IN\_Q015: INCOME FROM EMPLOYMENT

**Now I would like to proceed with the income portion of this survey. During [reference year], what was his income from the following sources?**

**Now I would like to proceed with the income portion of this survey. During [reference year], what was her income from the following sources?**

**Now I would like to proceed with the income portion of this survey. During [reference year], what was your income from the following sources?**

**Wages and salaries from all jobs, before deductions, including tips and commissions.**

INTERVIEWER: Lines 101 and 104 on the tax return  
An amount must be entered to continue. Enter 0 if respondent did not receive any income from this source.

If 0 is entered but an amount was reported in Labour, WageFlag = 1  
(CH\_Q251 = not empty) or (CH\_Q240 = 1 or 2) go to IN\_E015  
Otherwise go to IN\_Q020

Hard range: Minimum: 0  
Maximum: 99999995

Soft range: Minimum: 1,000 (excluding 0)  
Maximum: 100,000

IN\_E015: **Based on information provided previously, we expected an amount for wages and salaries. Did we miss it?**

?IN\_Q020: **Farm self-employment net income, including farm program payments and rebates, Canadian wheat board payments, crop insurance, etc.**

INTERVIEWER: Line 141

An amount must be entered to continue. Enter 0 if respondent did not receive any income from this source.

Hard range: Minimum: -9999995  
Maximum: 99999995

Soft range: Minimum: -5,000  
Maximum: 100,000

?IN\_Q025: **Non-farm self-employment net income, including business, professional, commission and fishing net income.**

INTERVIEWER: Lines 122, 135, 137, 139 and 143

An amount must be entered to continue. Enter 0 if respondent did not receive any income from this source.

Hard range: Minimum: -9999995  
Maximum: 99999995

Soft range: Minimum: -5,000  
Maximum: 150,000

?IN\_Q030: INVESTMENT INCOME

**Interest on bank accounts and other deposits, savings certificates, Canada Savings Bonds and other bonds, etc.**

INTERVIEWER: Line 121

An amount must be entered to continue. Enter 0

if respondent did not receive any income from this source.

Hard range: Minimum: 0  
Maximum: 9999995

Soft range: Minimum: 25 (excluding 0)  
Maximum: 50,000

?IN\_Q035: **Dividends (taxable amount)**

INTERVIEWER: Line 120

An amount must be entered to continue. Enter 0 if respondent did not receive any income from this source.

Hard range: Minimum: 0  
Maximum: 9999995

Soft range: Minimum: 10 (excluding 0)  
Maximum: 50,000

?IN\_Q040: **Taxable capital gains**

INTERVIEWER: Line 127

An amount must be entered to continue. Enter 0 if respondent did not receive any income from this source.

Hard range: Minimum: 0  
Maximum: 9999995

Soft range: Minimum: 25 (excluding 0)  
Maximum: 50,000

?IN\_Q045: **Other investment income**

INTERVIEWER: Line 126

An amount must be entered to continue. Enter 0 if respondent did not receive any income from this source.

Hard range: Minimum: -9999995  
Maximum: 9999995

Soft range: Minimum: -1,000

Maximum: 50,000

?IN\_Q050: INCOME FROM GOVERNMENT SOURCES

**Canada Child Tax Benefit and provincial or territorial child tax credits or benefits**

INTERVIEWER: No line exists for this on tax return  
An amount must be entered to continue. Enter 0 if respondent did not receive any income from this source.

Hard range: Minimum: 0  
Maximum: 99999995

Soft range: Minimum: 200 (excluding 0)  
Maximum: 14,000 for Quebec  
9,000 for Ontario and BC  
7,000 for rest of Canada

IN\_Q060: **Old Age Security pension, Guaranteed Income Supplement, Spouse's allowance from the federal government**

INTERVIEWER: Exclude provincial supplements (report these with Social assistance, IN\_Q075)  
Lines 113 and 146; OR line 146 only for form T1S-B/T1S-C  
An amount must be entered to continue. Enter 0 if respondent did not receive any income from this source.

Hard range: Minimum: 0  
Maximum: 99999995

Soft range: Minimum: 2,300 (excluding 0)  
Maximum: 12,000

If an amount other than 0 is entered and age <60 go to IN\_E060  
If 0 is entered and age >64 go to IN\_E061  
Otherwise go to IN\_Q065

IN\_E060: **Normally this type of income is paid only to persons aged 60 and over. Could this be income from another source?**



IN\_E061: **Normally persons aged 65 or over receive income from the Old Age Security pension. Did we miss it?**

INTERVIEWER: Old Age Security is universal. (But the Guaranteed Income Supplement and Spouse's Allowance are not.)

?IN\_Q065: **Canada or Quebec Pension Plan benefits (CPP/QPP)**

INTERVIEWER: Line 114  
An amount must be entered to continue. Enter 0 if respondent did not receive any income from this source.

Hard range: Minimum: 0  
Maximum: 99999995

Soft range: Minimum: 500 (excluding 0)  
Maximum: 15,000

?IN\_Q070: **Employment Insurance benefits**

INTERVIEWER: Line 119  
An amount must be entered to continue. Enter 0 if respondent did not receive any income from this source.

If 0 is entered but an amount was reported  
in Labour, UIFlg = 1 (CO\_Q010 = 1) go to IN\_E070  
Otherwise go to IN\_Q075

Hard range: Minimum: 0  
Maximum: 99999995

Soft range: Minimum: 500 (excluding 0)  
Maximum: 22,500

IN\_E070: **Based on information provided previously, we expected an amount for Employment Insurance benefits. Did we miss it?**

?IN\_Q075: **Social assistance and other income supplements from provincial or municipal sources**

INTERVIEWER: Line 145  
An amount must be entered to continue. Enter 0

if respondent did not receive any income from this source.

If 0 is entered but an amount was reported in January, SocAs = 1 (CO\_Q040 = 1) go to IN\_E075  
Otherwise go to IN\_Q080

Hard range: Minimum: 0  
Maximum: 99999995

Soft range: Minimum: 300 (excluding 0)  
Maximum: 25,000

IN\_E075: **Based on information provided previously, we expected an amount for Social Assistance. Did we miss it?**

?IN\_Q080: **Workers' compensation benefits**

INTERVIEWER: Line 144

An amount must be entered to continue. Enter 0 if respondent did not receive any income from this source.

If 0 is entered but an amount was reported in Labour, WorkCom = 1 (CO\_Q025 = 1) go to IN\_E080  
Otherwise go to IN\_Q085

Hard range: Minimum: 0  
Maximum: 99999995

Soft range: Minimum: 200 (excluding 0)  
Maximum: 50,000

IN\_E080: **Based on information provided previously, we expected an amount for Workers' compensation benefits. Did we miss it?**

IN\_Q085: **Goods and Services Tax/Harmonized Sales Tax (GST/HST) Credit**

INTERVIEWER: No line exists for this on tax return

An amount must be entered to continue. Enter 0 if respondent did not receive any income from this source.

Hard range: Minimum: 0  
Maximum: 99999995

Soft range: Minimum: 100 (excluding 0)  
Maximum: 1,500

IN\_Q090: **Provincial and territorial tax credits**

INTERVIEWER: Line 479; OR lines 455, 459, 460 and 462  
on Quebec tax return  
An amount must be entered to continue.  
Enter 0 if respondent did not receive any  
income from this source.

Hard range: Minimum: 0  
Maximum: 99999995

Soft range: Minimum: 25 (excluding 0)  
Maximum: 3,000

IN\_Q095: **Veterans' Pensions and Civilian War Pensions and allowances**

INTERVIEWER: No line exists for this on tax return  
An amount must be entered to continue. Enter 0  
if respondent did not receive any income from  
this source.

Hard range: Minimum: 0  
Maximum: 99999995

Soft range: Minimum: 300 (excluding 0)  
Maximum: 50,000

IN\_Q100: **Other income from government sources (Specify)**

INTERVIEWER: An amount must be entered to continue. Enter 0  
if respondent did not receive any income from  
this source.

Hard range: Minimum: 0  
Maximum: 99999995

Soft range: Minimum: 100 (excluding 0)  
Maximum: 25,000

IN\_N100: INTERVIEWER: Specify the source

01. Payments for individuals in fishing industry
02. Training allowance from federal or provincial governments

- 03. Cash property tax reductions and rebates
- 04. Labour adjustment benefits
- 05. Regular payments from provincial automobile insurance plans
- 06. Quebec Maternity Allowance
- 07. Other (specify)
- 98. Refuse
- 99. Don't know

If response = 07, Other (specify)                      go to IN\_N100S

IN\_N100S:    SpecTxt

INTERVIEWER: Specify

IN\_Q105:    INCOME FROM PENSIONS, RRSPS, RRIFS

**Retirement pensions, including superannuation, RRIF payments and annuities, deferred profit sharing plans and other private pension plans**

INTERVIEWER: Line 115

An amount must be entered to continue. Enter 0 if respondent did not receive any income from this source.

Hard range: Minimum:            0  
Maximum: 99999995

Soft range: Minimum:        500 (excluding 0)  
Maximum: 50,000

IN\_Q110:    **RRSP annuities, excluding RRSP withdrawals**

INTERVIEWER: Line 129 if pension and not withdrawal

An amount must be entered to continue. Enter 0 if respondent did not receive any income from this source.

Hard range: Minimum:            0  
Maximum: 99999995

Soft range: Minimum:        100 (excluding 0)  
Maximum: 50,000

?IN\_Q115: **RRSP withdrawals**

INTERVIEWER: Line 129 if withdrawal and not pension  
An amount must be entered to continue. Enter 0  
if respondent did not receive any income from  
this source.

Hard range: Minimum: 0  
Maximum: 99999995

Soft range: Minimum: 700 (excluding 0)  
Maximum: 25,000

?IN\_Q125: **OTHER INCOME**

**Other income - (Specify)**

INTERVIEWER: Line 130 plus any additional amounts  
An amount must be entered to continue. Enter 0  
if respondent did not receive any income from  
this source.

Hard range: Minimum: 0  
Maximum: 99999995

Soft range: Minimum: 10 (excluding 0)  
Maximum: 25,000

IN\_N125: INTERVIEWER: Specify the source

01. Scholarships, bursaries, fellowships, research grants
02. Settlements of life or other insurance policies
03. Retiring allowance and severance pay received from employer
04. Income from outside Canada (if not already reported)
05. Lottery and gambling winnings
06. Wage loss replacement benefits and income maintenance payments
07. Inheritance
08. Employer or union supplementary unemployment benefits
09. Payments from Children's Aid
10. Interest from loans and mortgages
11. Regular income from an estate or trust fund
12. Other (specify)
98. Refuse
99. Don't know

If response = 12, Other (specify) go to IN\_N125S

IN\_N125S: SpecTxt

INTERVIEWER: Specify

IN\_Q140: Total confirmation

**Based on the amounts reported, [excluding the amount received for support payments,] the computer has calculated the total income as \$[\*total income as calculated]. Does this sound about right?**

\*[Total income as calculated] is pre-filled with the total of items IN\_Q015 to IN\_Q125

If "strspnd" set in SP\_Q005, prefill the question text with "excluding the amount received for support payments"

1. Yes
2. No
8. Refuse
9. Don't know

If yes go to IN\_Q145  
Otherwise go to IN\_Q141

IN\_Q141: **Can you give an estimate of his total income?**

**Can you give an estimate of her total income?**

**Can you give an estimate of your total income?**

INTERVIEWER: If no income in [reference year], enter 0.

Soft range: Maximum 250,000

If entered 0 go to IN\_C002  
If entered any other amount  
different from the total calculated  
by the computer go to IN\_E143  
Otherwise go to IN\_Q145

IN\_E143: **The computer calculated the total as \$[total income as calculated]. Could we review the amounts reported? Perhaps I made a mistake.**

go to IN\_Q145

?IN\_Q145: INCOME TAX

**INCOME TAX PAID on [reference year] income (federal, provincial and territorial)**

INTERVIEWER: All provinces except Quebec: Add lines 420 and 428.  
Quebec residents only: Add together line 420 of federal tax return and line 450 of Quebec tax return. Then subtract lines 445, 446 and 447 of Quebec return.  
If they did not file a return or did not calculate their taxes, ask them to report their best estimate.

go to IN\_C002

IN\_C002: If Hhinfo.Age59 > 69 go to PT\_C001  
If flag: FlagJobs <> 1, no job in reference year go to PT\_C001  
If FlagJobs = 1 (DA\_Q001 = 1 or DA\_Q005 = 1 or DA\_Q010 = 1 or DA\_Q015 = 1), then  
If flag: PenPlan = 1, contributed to a pension plan (CH\_Q271 = 1) go to IN\_Q160  
If flag: PenPlan <> 1, did not contribute to a pension plan, or refuse, don't know or not stated in Labour interview ((CH\_Q271 = 2) or (CH\_Q271 = empty/DK/RF)) go to IN\_C005

IN\_Q160: **In [reference year], what were his total employer pension plan contributions?**

**In [reference year], what were her total employer pension plan contributions?**

**In [reference year], what were your total employer pension plan contributions?**

INTERVIEWER: This is the Registered pension plan deduction.  
Line 207  
An amount must be entered to continue.

Hard range: Minimum: 0  
Maximum: 99999995

Soft range Min: 50  
Max: 9,995

go to IN\_C005

IN\_C005: If flag: SelfEmp = 1, one or more jobs has  
Clwrk69 = 2 “self-employed”  
(CH\_Q011 = 1 and Hhinfo.Clwrk69 = 2) or  
(CH\_Q015 = 2) or (CH\_Q017 = 2) go to IN\_Q170  
Otherwise go to IN\_C010

IN\_Q170: **In [reference year], did he pay professional membership dues  
or professional or malpractice liability insurance premiums?**

**In [reference year], did she pay professional membership dues  
or professional or malpractice liability insurance premiums?**

**In [reference year], did you pay professional membership dues  
or professional or malpractice liability insurance premiums?**

1. Yes
2. No
8. Refuse
9. Don't know

If Yes go to IN\_Q175  
Otherwise go to IN\_C010

IN\_Q175: **In [reference year], what was the amount he paid in  
professional membership dues or professional or malpractice  
liability insurance premiums?**

**In [reference year], what was the amount she paid in  
professional membership dues or professional or malpractice  
liability insurance premiums?**

**In [reference year], what was the amount you paid in  
professional membership dues or professional or malpractice  
liability insurance premiums?**

INTERVIEWER: On the tax return, this is ‘Annual union,  
professional or like dues’, Line 212. Please  
subtract the amount for union dues, if any.



Hard range: Minimum: 0  
Maximum: 99999995

Soft range: Min: 10 (excluding 0)  
Max: 9,995

go to IN\_C010

IN\_C010: If flag: UniMem = 1, union member or not  
a union member but covered by a union  
contract or collective agreement  
(CH\_Q260 = 1 or CH\_Q265 = 1) go to IN\_Q190  
If flag: UniMem <> 1, not a union member  
and not covered by a union contract or  
collective agreement, or refuse, don't know,  
not stated in Labour interview  
((CH\_Q260 = 2 and CH\_Q265 = 2) or  
(CH\_Q260 = empty/DK/RF)) go to PT\_C001

IN\_Q190: **In [reference year], what was the amount he paid in union dues?**

**In [reference year], what was the amount she paid in union dues?**

**In [reference year], what was the amount you paid in union dues?**

INTERVIEWER: On the tax return, this is 'Annual union, professional or like dues', Line 212. Please subtract the amount for professional or like dues, if any.  
An amount must be entered to continue.  
Enter 0 if respondent did not receive any income from this source.

Hard range: Minimum: 0  
Maximum: 99999995

Soft range: Minimum: 10 (excluding 0)  
Maximum: 2000

go to PT\_C001

PT\_C001: If final interview for household (wave = 6), go to CAI\_SO  
Otherwise, go to PT\_Q001

PT\_Q001: **In case there are difficulties reaching [respondent], we would like [his] permission to use provincial drivers' licence files, for the sole purpose of finding [his] new address or telephone number. Does [respondent] give Statistics Canada permission to use these files?**

**In case there are difficulties reaching [respondent], we would like [her] permission to use provincial drivers' licence files, for the sole purpose of finding [her] new address or telephone number. [Does respondent] give Statistics Canada permission to use these files?**

**In case there are difficulties reaching [you], we would like [your] permission to use provincial drivers' licence files, for the sole purpose of finding [your] new address or telephone number. [Do you] give Statistics Canada permission to use these files?**

- 1 Yes
- 2 No
- 8 Refuse
- 9 Don't know

go to CAI\_SO

CAI\_SO: INTERVIEWER: This is the end of the component. Return to previously answered questions to make any necessary corrections, or select <Exit> to exit the component.

### **6.1. Income edits**

Soft edits (other than the edits appearing in the questions above) were used during data collection.

#### **Income Amount check**

This edit was used during data collection to check the income source amounts entered by the interviewer.

When the amounts entered in the computer are outside the predetermined range, one of two error messages pop up: "**Amount seems too high**" or "**Amount seems too low**".

These messages appear when the amounts entered are outside the soft ranges shown in the questions above, which is determined using data collected in last year's SLID income interview. These ranges exclude approximately 5% of amounts below or above the selected limits.

The interviewer has the option to either 'Suppress' to confirm the value or 'Close' or 'Goto' to enter a new value.

## **6.2. ON-Line income help (F1)**

### **IN\_Q015: Wages and Salaries**

Include amounts called "Other employment income", such as research grants (net of expenses) and income-maintenance insurance payments.

Exclude retirement and severance pay (report this in Other income, IN\_Q125).

### **IN\_Q020: Farm self-employment NET income**

This is receipts minus operating expenses, depreciation, and capital cost allowances.

If partnership, report only your share.

If incorporated, report this income in Wages and salaries (IN\_Q015) and/or Dividends (IN\_Q035).

Report net rent from farms leased to others in Other investment income, (IN\_Q045).

### **IN\_Q025: Non-farm self-employment**

This is receipts minus operating expenses, depreciation, and capital cost allowances.

If partnership, report only your share.

Include net income from roomers and boarders.

If incorporated, report this income in Wages and salaries (IN\_Q015) and/or Dividends (IN\_Q035).

### **IN\_Q030: Interest**

Include interest from Canadian and foreign sources, and foreign dividends. For joint accounts, report each person's share separately.

### **IN\_Q035: Dividends**

Report taxable amounts received from Canadian corporations.

**IN\_Q040: Taxable Capital Gains**

Report as for tax purposes.

**IN\_Q045: Other investment income**

Include amounts such as

- \* net rental income,
- \* rents for leased farm land,
- \* regular income from an estate or trust fund,
- \* cash dividends from life insurance policies, etc.

**IN\_Q050: Child Tax Benefit**

Report only for the parent who receives the cheque.

Examples:

- \* Newfoundland and Labrador Child Benefit
- \* Nova Scotia Child Benefit
- \* New Brunswick Child Tax Benefit and Working Income Supplement
- \* Quebec family allowances
- \* Ontario Child Care Supplement for Working Families
- \* Alberta Family Employment Tax Credit
- \* Saskatchewan Child Benefit
- \* BC family bonus, BC Earned Income Benefit
- \* Yukon Child Benefit
- \* Northwest Territories Child Benefit and Territorial Worker's Supplement
- \* Nunavut Child Benefit and Territorial Worker's Supplement

**IN\_Q065: Canada or Quebec Pension**

Include all types, such as

- \* regular,
- \* disability,
- \* for a surviving spouse or child (death benefit)

**IN\_Q070: Employment Insurance benefits**

Include all types, such as

- \* regular,
- \* sickness,
- \* maternity/paternity,
- \* work sharing,
- \* training,
- \* or for self-employed fishermen

**IN\_Q075: Social assistance**

Here are some EXAMPLES of the names of social assistance programs. There are many social assistance programs in Canada with many different names, depending on the municipality and province. Some are general, and others are for specific

needs like child care, housing, health care expenses, or earnings supplements. This list does not reflect all the programs or their exact titles.

*Do not include programs which are specifically listed under question IN\_Q050, Child tax benefits.*

Social assistance program  
Welfare  
Income support program  
Income supplement program  
Day care subsidy  
Child welfare assistance  
Extended Benefits Program (EBP)  
Financial Support Program (FSP)  
Residential assistance  
Work and Employment Incentive Program (WEIP)  
Parental Wage Assistance Program (PWA)  
Housing allowance  
LOGIRENTE  
GAINS  
Municipal assistance program  
Child Related Income Support Program (CRISP)  
55 Plus (Manitoba)  
Shelter Allowances for Elderly Renters (SAFER)  
Shelter Allowances for Family Renters (SAFFR)  
Saskatchewan Assistance Plan (SAP)  
Saskatchewan Income Plan (SIP)  
Support for persons with disabilities  
Special needs assistance  
Seniors benefit  
Seniors supplement

**IN\_Q080**

Workers' Compensation benefits from any provincial government compensation plan covering work-related injury or disability

**IN\_Q115: RRSP withdrawals**

Exclude tax-free withdrawals used for purchasing a home.

**IN\_Q125: Other income**

Exclude:

- \* proceeds from the sale of property, businesses, financial assets or personal belongings;
- \* income tax refunds
- \* loans received
- \* loans repaid to you as the lender

\* refunds of contributions to work-related pension plans

**IN\_Q145: Income Tax Paid on income (federal, provincial and territorial)**

All provinces except Quebec:

- Add lines 420 and 428.

Quebec residents only:

- Add together:
  - Line 420 of federal tax return.
  - Line 450 of Quebec tax return
- Then subtract:
  - Line 445 (QPP contributions)
  - Line 446 (Contribution to health services fund)
  - Line 447 (Premium payable under the Quebec prescription drug insurance plan)

If they did not file a return or did not calculate their taxes, ask them to report their best estimate.