



Catalogue no. 75F0002MIE — No. 005
ISSN: 1707-2840
ISBN: 0-662-40532-3

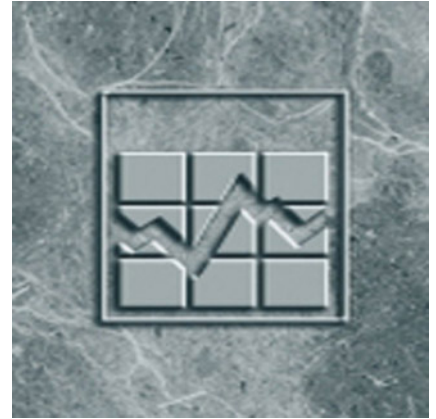
Research Paper

Income Research Paper Series

Survey of Labour and Income Dynamics (SLID), 2003 reference year: Entry Exit component for January 2004 labour interview and May 2004 income interview

by Andrea Hiltz

Income Statistics Division
Jean Talon Building, Ottawa, K1A 0T6
Telephone: 613 951-7355



Statistics
Canada

Statistique
Canada

Canada

How to obtain more information

Specific inquiries about this product and related statistics or services should be directed to: Income Statistics Division, Statistics Canada, Ottawa, Ontario, K1A 0T6 (telephone: (613) 951-7355; (888) 297-7355; income@statcan.ca).

For information on the wide range of data available from Statistics Canada, you can contact us by calling one of our toll-free numbers. You can also contact us by e-mail or by visiting our website.

National inquiries line	1 800 263-1136
National telecommunications device for the hearing impaired	1 800 363-7629
Depository Services Program inquiries	1 800 700-1033
Fax line for Depository Services Program	1 800 889-9734
E-mail inquiries	infostats@statcan.ca
Website	www.statcan.ca

Information to access the product

This product, catalogue no. 75F0002MIE, is available for free. To obtain a single issue, visit our website at www.statcan.ca and select Our Products and Services.

Standards of service to the public

Statistics Canada is committed to serving its clients in a prompt, reliable and courteous manner and in the official language of their choice. To this end, the Agency has developed standards of service that its employees observe in serving its clients. To obtain a copy of these service standards, please contact Statistics Canada toll free at 1 800 263-1136. The service standards are also published on www.statcan.ca under About Statistics Canada > Providing services to Canadians.



Statistics Canada
Income Statistics Division

Income research paper series

Survey of Labour and Income Dynamics (SLID), 2003 reference year: Entry Exit component for January 2004 labour interview and May 2004 income interview

Published by authority of the Minister responsible for Statistics Canada

© Minister of Industry, 2005

All rights reserved. The content of this publication may be reproduced, in whole or in part, and by any means, without further permission from Statistics Canada, subject to the following conditions: that it is done solely for the purposes of private study, research, criticism, review, newspaper summary, and/or for non-commercial purposes; and that Statistics Canada be fully acknowledged as follows: Source (or "Adapted from", if appropriate): Statistics Canada, name of product, catalogue, volume and issue numbers, reference period and page(s). Otherwise, no part of this publication may be reproduced, stored in a retrieval system or transmitted in any form or by any means, electronic, mechanical, photocopy, for any purposes, without the prior written permission of Licensing Services, Marketing Division, Statistics Canada, Ottawa, Ontario, Canada K1A 0T6.

June 2005

Catalogue no. 75F0002MIE, Vol. 5

Frequency: Irregular

ISSN: 1707-2840

ISBN: 0-662-40532-3

Ottawa

La version française de cette publication est disponible sur demande (n° 75F0002MIF au catalogue).

Note of appreciation

Canada owes the success of its statistical system to a long-standing partnership between Statistics Canada, the citizens of Canada, its businesses, governments and other institutions. Accurate and timely statistical information could not be produced without their continued cooperation and goodwill.

Executive Summary

The Survey of Labour and Income Dynamics (SLID) conducts two annual interviews: the Labour interview in January and the Income interview in May. The data are collected using computer-assisted interviewing. Thus there are no paper questionnaires required for data collection. The questions, responses and interview flow for Labour and Income are documented in other SLID research papers. This document presents the information for the 2004 Entry Exit portion of the Labour and the Income interviews (for the 2003 reference year).

The Entry Exit Component consists of five separate modules. The Entry module is the first set of data collected. It is information collected to update household composition and place of residence. For each person identified in Entry, the Demographics module collects (or updates) the person's name, date of birth, sex and marital status. Then the Relationships module identifies (or updates) the relationship between each respondent and every other household member. Relationship data is not collected in the May Income interview. The Exit module includes questions on who to contact for the next interview and the names, phone numbers and addresses of two contacts to be used only if future tracing of respondents is required. An overview of the Tracing module is also included in this document.

Table of Contents

1. Introduction.....	6
2. How the application works	8
3. What's new	9
4. How to read this document	11
5. Entry component.....	14
6. Demographic module.....	27
7. Relationship module	29
8. Exit Component	31
9. Tracing component	36
10. Edits	37
Appendix 1.....	45
Invoked question blocks	45
Appendix 2.....	51
Flow charts.....	51

1. Introduction

Each January, the Labour interview for the Survey of Labour and Income Dynamics (SLID) is conducted. Then, in May, SLID income data are collected. Both use computer-assisted interviewing (CAI) for data collection.

For the SLID 2004 collection (for the 2003 reference year), Panel 3 was in its fifth year of collection and Panel 4 was in its second year of collection. Both panels consisted of approximately 37,000 households and 88,000 people.

In Appendix 2, figures 1 and 2 present an overview of the flow of the January interview and the flow of the Entry Exit Component for Labour, respectively. Figures 3 and 4 present an overview of the flow of the May interview and the flow of the Entry Exit Component for income, respectively.

The ENTRY module collects/updates information on household members. For each household member listed at the last interview, the interviewer asks whether he/she is still a household member. For those who are not, information is collected on when the person moved out, the reason for leaving, and the new address and telephone number. If the entire household has moved, information on telephone number and address is updated. Finally, the interviewer asks if there are any new household members. If so, the interviewer first checks whether the new person is a “ghost” (those persons who used to belong to the household but who moved out and may have returned at this contact). A list of former household members (ghosts) is provided from the previous SLID interview for each household. If the person is not on this list, their name is added to the household roster. These new persons are joiners. The date when the person joined the household is asked as well as the person's previous province of residence.

For May, the ENTRY module collects/updates information on household members. Cohabitants (new members or joiners) identified in the January interview appear on the household member list and are eligible for the Income interview. New cohabitants identified during the May 2004 interview will only be interviewed for Labour and Income in January 2005. Former household members who returned to the household in May are eligible for the Income interview. If the entire household has moved, it will be traced.

The DEMOGRAPHICS module collects or updates the date of birth, sex and marital status of each household member.

The RELATIONSHIPS module, which is only collected in January, identifies or updates the relationship between each household member and every other household member.

Most surveys which contain household and family variables construct family relationships in relation to a household reference person or "head". For example, a family composed of a husband, wife and two children might use either the husband or the wife as the reference person. We would end up with relationships of head, spouse, and children. By collecting family relationships based on a reference person we lose detailed information about family relationships.

SLID collects an expanded set of demographic data by asking, each year, the relationship of every household member to every other household member, rather than by the traditional method of relating everyone to one reference person. The objective of this relationship approach is to collect data that reflect the changes that have taken place in family relationships over a six year period. As well, in a longitudinal survey, this approach avoids the need to re-ask relationships if the reference person leaves the household.

The EXIT module confirms the household contact name for the next interview and asks whether the household is planning a future move. If so the new address is recorded. The names, phone numbers and addresses of two friends or relatives, who may be contacted if future tracing of respondents is required, is also collected.

Cases will be sent to the TRACING component as a result of the answers given to certain questions in the Entry module.

This research paper presents the content of the 2004 ENTRY EXIT component¹ for both the Labour interview and the Income interview (for the 2003 reference year) including question wording, possible responses, and flows of questions.

2. How the application works

Standard Question Blocks

The document “Standard Question Blocks for Social Survey CAI Applications” provides the basic specifications and documentation for standard Entry and Exit questions that are available for use by all surveys. These questions are grouped into “blocks” and each block is programmed individually. The blocks include pre-defined question text and response categories that cannot be changed. Survey areas may select the blocks that they wish to include in their Entry and Exit components.

The following blocks are also called in the SLID Entry and Exit components (see Appendix 1):

Address Questions

The Address block includes all the question and interviewer instruction text necessary to gather a complete Canadian or US address. Addresses outside Canada and the US can also be gathered, but some information may have to be entered in fields not designed for collection of that information, e.g., the name of a country might be entered in the same field as the municipality.

Date Questions

The date block has been programmed with full date information collected as three separate fields (in day/month/year order). This allows “Don’t Know” and “Refusal” to be entered for any or all of the fields, and also allows those fields containing numeric data to be validated. Naturally, only if all three of the fields contain numeric data will it be possible to validate them together.

It is possible to validate the entered date against other information, specifically a reference date. Survey areas must provide the reference date, and then a hard edit

1. The Labour and Income questions are presented in other SLID research papers.

checking for consistency between the entered date and the reference date will be performed. If a reference date is not provided, the edit will not be performed.

Telephone Number

Two standard blocks have been programmed to collect a telephone number. The North American Telephone block gathers a 10-digit telephone number in two pieces, consisting of a three-digit area code and a seven-digit phone number. Validation of the area code field takes place before the seven-digit telephone number is collected, using a soft confirmation edit.

3. What's new

Entry Exit for LABOUR

New questions

No new questions have been added to the Entry Exit component since the May 2003 Income interview.

Modifications

INT_R01 (survey introduction)

Small text changes were made to the wording of the survey introduction.

MON_R01 (CATI monitoring)

A small test change was made to the wording of the question to conform to the standard question wording for social surveys.

MA_Q01 (mailing address move)

A change was made to the logic so that households with a province code of 76 (U.S.A.) or 77 (Outside of Canada and U.S.A.) will be asked if their change in address was due to a move and if Yes, the household moved flag will be set.

OR_Q015 (operate a farm)

A change was made to the logic so that every household is asked OR_Q015

"Does anyone in your household operate a farm on this property?"

Previously this question was only asked if the postal code of the household contained a "0" in the second position, which was the indicator used by Canada Post for a "rural" address. After analysis of the collection 2003 data, it was

determined that we had very few households responding to this question. Apparently, Canada Post was not using this indicator in New Brunswick and will not be using it anymore for the rest of the country (due to amalgamations, etc.).

RM_Q01 (reason moved)

A change was made to the logic to ask the reason moved only for members who are current members ($\text{memtyp59} = 1$), as joiners and returners may not have been in the household when it moved. Also, we have had records where a respondent answered "institutionalized" to RM_Q01 so their memtyp59 was set to 7 and a Labour component was not generated. It seems as though they had "returned" to the household from an institution and responded "institutionalized" to RM_Q01. If we only ask RM_Q01 when the $\text{memtyp59} = 1$, a returner (who has a $\text{memtyp59} = 5$) will not be asked the question, their memtyp59 will not be reset to 7 and their Labour component will be generated.

RNC_Q1 (relationships)

A new flag variable "Relflg58" was introduced to determine if the relationship questions should be asked for the household. If $\text{relflg58} = 1$, the relationship questions will be asked. Otherwise, relationships will not be asked. Relflg58 will be set to 1 on the sample file for a household when: it is the first year of a new panel; or $\text{COLL_REL.RELED12} = 1$ (flag to indicate if relation was edited/changed/imputed during processing of the previous year's data). Otherwise, the flag will be set to 2 on the sample file and reset to 1 if there is a change in the household due to a change in marital status, a joiner, or a returner. (If a member moves out of the household, the flag will only change if there has been a marital status change as a result of the mover leaving.)

FC_R01 (future contact)

The prefilled information, of when the next contact will be, has been removed from the question.

Entry Exit for INCOME

New questions

No new questions have been added to the Entry Exit component since the January 2004 Labour interview.

Modifications

The Entry Exit components for both Labour and Income are generic. Certain questions are not asked during the May Income collection. The asking of these questions is based on "Phaseid" logic written into the application (Phaseid = 1 for Labour; Phaseid = 2 for Income). The following blocks are not called for Income: Dwelling Type, Bedrooms, Owners & Renters, Tenure, Mortgage, Owners, Renters and Relationships.

4. How to read this document

Text in **bold** letters is read, as worded, by the interviewer. Instructions for the interviewer are preceded by the word "INTERVIEWER" and are not read out loud to the respondent. The options "Refuse" (R) and "Don't know" (DK) are allowed on every question unless otherwise stated. However, the response categories are shown in this document only when the flow from these responses is not to the next question.

Question numbers

For each section, the question numbers refer to the actual numbers used in the programmed application which appear on the interviewer's computer screen.

Naming conventions

Naming conventions conform to the standards for Statistics Canada social surveys.

Questions with: Q (e.g. SL_Q01) = question text read to a respondent
 C (e.g. JOI_C01) = internal check
 N (e.g. CN_N02) = interviewer instruction
 E (e.g. AWC_E05) = edit message

Pre-fill items

These are items specific to each respondent's interview. The software adds the relevant information into the question, making the interviewer's job easier. Prefill items (shown in square brackets []) include:

["English"/"French"/"Other"] - This is the language in which the previous interview was conducted.

[Does[respondent name]/Do any of the following people] - If there is only one respondent living in the household, the first wording is used for the question and the appropriate respondent name is pre-filled. If there is more than one respondent living in the household, the second wording is used for the question and the list of members appears below the question text.

[respondent name] – This is the first and last name of the person to whom the question refers. This is not necessarily the person who is talking to the interviewer.

[month of birth], [day of birth], [year of birth] - This is the date of birth information recorded in the first interview with each respondent and confirmed in each subsequent interview. It is used to calculate the household member's age.

[calculated age] – Calculated from the reported date of birth, it is used to verify the date of birth information.

[reference date] – A predetermined date that is prefilled in the question text.

[reference year] – This is the year for which the information is collected (2003).

[marital status] – The reported value, used in subsequent questions to identify dates of changes in marital status.

[address] – For persons reporting a move, this is the previous address of residence.

[mailing address] – The mailing address obtained during the previous interview.

[province or territory] – This is the province or territory which is derived from the postal code reported.

[telephone number] – The telephone number obtained during the previous interview.

[month and year] – This is the period of the next interview; May of the current year (for the Income interview) if tax permission is not given, and January of the current year + 1 (for the next Labour interview) if tax permission is given.

Headers

For some question groups in CAI, important information is noted at the top of the screen. This information is given at the beginning of each section description.

Ranges

Hard Ranges of acceptable responses are specified for some of the questions. For example, in JOI_Q04 (when moved in) a hard range minimum of " January 1, [reference year]" exists. If the interviewer tries to enter a date earlier than this, the system will not accept it.

Dates

All dates are entered by number in boxes, using the dd/mm/yyyy format. "Refusal" and "Don't know" are also acceptable responses.

Outcome Codes

The Outcome Code is a two-digit code which indicates the result of a contact or attempted contact with a household during the conduct of a survey. The codes are grouped into "In Progress" and "Final" and some of the same outcome codes may appear on both lists.

Action Codes

An Action Code is assigned for 'refusal' cases only. It is a one-digit code which indicates the action to be taken for the next collection. Only a Senior interviewer or a PM has the authority to assign these codes.

5. Entry component

Call Contact

Contact

Header: Household Respondent, Telephone Number, Address

CN_N02 INTERVIEWER: Have you made contact?

- 1 Yes
- 2 No (Go to END_BLOCK)
(Refuse or Don't know are not possible answers)

CN_Q03 Call the **Interviewer Introduction** block

Interviewer Introduction

Header: Household Respondent, Telephone Number, Address

II_R01 **Hello, I'm [calling] from Statistics Canada. My name is ...**
INTERVIEWER: Introduce yourself using both your given and last names.
Press <Enter> to continue.

END_BLOCK

If CN_N02 = No, call **Exit Component**
If CNTFLG = 1 call **Appointment Re-Contact**
Otherwise, call **Survey Introduction**

Appointment Re-Contact

ARC_R01 **One of our interviewers previously contacted your household regarding the Survey of Labour and Income Dynamics. I would like to continue the interview where we left off. As you know, all information we collect in this survey will be kept strictly confidential.**
INTERVIEWER: Press <Enter> to continue.

END_BLOCK

Call **Survey Introduction**

Survey Introduction

INT_R01 **I'm calling [to update the information you provided for/about] the Survey of Labour and Income Dynamics. This survey collects data about changes in jobs, income and moving and how they affect people over time. Your answers will be kept strictly confidential and used only for statistical purposes. While participation is voluntary, your assistance is essential if the results are to be accurate. (Registration#: STC/HLD-038-05334)**
INTERVIEWER: Press <Enter> to continue.

END_BLOCK

Call **CATI Monitoring**

CATI Monitoring

MON_R01 **My supervisor may listen to this call for the purpose of quality control.**
INTERVIEWER: Press <Enter> to continue.

END_BLOCK

Call **Language of Preference**

Language of Preference

LP_Q01 **Would you prefer to be interviewed in English or in French?**
INTERVIEWER: Previous response was ["English" / "French" / "Other"].

- 1 English (Go to END_BLOCK)
- 2 French (Go to END_BLOCK)
- 3 Other
(Refuse/Don't know are not allowed)

LP_N02 INTERVIEWER: Select respondent's preferred non-official language.
If necessary, ask: **(What language would you prefer?)**

- | | | | |
|----|-----------------|----|-----------------|
| 3 | Chinese | 16 | Afghan |
| 4 | Italian | 17 | Cantonese |
| 5 | Punjabi | 18 | Hindi |
| 6 | Spanish | 19 | Mandarin |
| 7 | Portuguese | 20 | Persian (Farsi) |
| 8 | Polish | 21 | Russian |
| 9 | German | 22 | Ukrainian |
| 10 | Vietnamese | 23 | Urdu |
| 11 | Arabic | 24 | Inuktitut |
| 12 | Tagalog | 25 | Hungarian |
| 13 | Greek | 26 | Korean |
| 14 | Tamil | 27 | Serbo-Croatian |
| 15 | Cree | 28 | Gujarati |
| 90 | Other (specify) | 29 | Dari |
- (Refuse/Don't know are not allowed)

LP_C02 If not 90 "Other -Specify", go to END_BLOCK.

LP_N02S INTERVIEWER: Specify.

(80 spaces)
(Refuse/Don't know/Null are not allowed)

END_BLOCK
***Set CNTFLG to 1

Call **Subsequent Longitudinal**

Subsequent Longitudinal

SL_Q01 **[Does [respondent name] / Do any of the following people] still live or stay in this dwelling?**
INTERVIEWER: Select “Yes” if at least one person on the list still lives in this dwelling.

[A list of all longitudinal members is displayed on the screen.]

- 1 Yes
- 2 No (no one on the list still lives in this dwelling) (Set the Household Moved Flag = 1)
(Refuse/Don't know are not allowed)

If SL_Q01 = 2 “No”, pop up a soft edit with the following text: “This case will be sent to tracing. If the case should not be sent to tracing, return to SL_Q01 and change the response to “Yes”.”

END_BLOCK

If SL_Q01 = No, set the Household Moved Flag (HHINFO.HMVFLG58) to 1, and Set In-progress Outcome Code of 30 "Tracing Required" and send the case to the Tracing Component.
Call **Thank You 1** (see Appendix 1)
Otherwise, Call **Confirm Mailing Address**
If (NUM & STREET & APT & PC & CITY = Empty) or (PROV = 76 or 77), then go to CMA_Q02

Confirm Mailing Address

CMA_Q01 **I would like to confirm your mailing address. Is it:**
[Mailing address]

- 1 Yes (Go to END_BLOCK)
- 2 No
DK, R (Go to END_BLOCK)

CMA_Q02 Call the **Mailing Address** block

Mailing Address

MA_Q01 **What is your correct mailing address?**

Call the **Address** block (see Appendix I).

END_BLOCK

If CMA_Q01 = No or (HHINFO.PROV58 = 76 or 77), call **Mailing Address Move**
Otherwise, call **Confirm Telephone**

Mailing Address Move

MAM_Q01 **Is this change in address due to a move?**

- 1 Yes (Set the Household Moved Flag = 1)
- 2 No

END_BLOCK

Call Confirm Telephone

Confirm Telephone

TEL_C01 If no telephone number exists, go to TEL_Q02.

TEL_Q01 **I would like to confirm your telephone number.
Is it [telephone number]?**

1 Yes (Go to END_BLOCK)

2 No
DK, R (Go to END_BLOCK)

TEL_Q02 **What is your telephone number, including the area code?**

Call the North American Telephone block (see Appendix I).

END_BLOCK

IF HHINFO.PHASEID = 2, call **Roster Introduction**
Otherwise, call **Dwelling Type**

Dwelling Type

DW_Q01 **What type of dwelling do you live in? Is it a:**
INTERVIEWER: Read categories to respondent.

01 ... single detached?

02 ... double?

03 ... row or terrace?

04 ... duplex?

05 ... low-rise apartment of fewer than 5 stories or a flat?

06 ... high-rise apartment of 5 stories or more?

07 ... institution?

08 ... hotel; rooming/lodging house; camp?

09 ... mobile home?

10 ... other - Specify

DW_C01 If 10 "Other -Specify", go to DW_N02S. Otherwise, go to END_BLOCK.

DW_N02S INTERVIEWER: Specify.

(80 spaces)

(DK, R are not allowed)

END_BLOCK

If DW_Q01 = 07 "Institution", call **Thank You 1**, then call **CAI_SO** and set Final outcome code to 60

Otherwise, call **Number of Bedrooms**

Number of Bedrooms

BD_Q01 **How many bedrooms are there in this dwelling?**
INTERVIEWER: Enter "0" if no separate, enclosed bedroom.

[[] Number of bedrooms
(MIN: 0) (MAX: 20)

END_BLOCK

Call Owners and Renters

Owners and Renters

OR_Q005 **Is this dwelling in need of any repairs? Do not include remodelling and energy improvements.**

- 1 **Yes, major repairs are needed: for example, corroded pipes, damaged electrical wiring, sagging floors, bulging walls, damp walls and ceilings, crumbling foundation, rotting porches and steps.**
- 2 **Yes, minor repairs are needed: for example, small cracks in interior walls and ceilings, broken light fixtures and switches, leaking sinks, cracked or broken window panes, some missing shingles or siding, some peeling paint.**
- 3 **No, only regular maintenance is needed: for example, painting, leaking faucets, clogged gutters or eavestroughs.**

OR_Q010 **What is the principal fuel used to heat this dwelling?**

- 1 Oil or other liquid fuel
- 2 Piped gas (natural gas)
- 3 Bottled gas (propane)
- 4 Electricity
- 5 Wood
- 6 Other - specify

OR_C010 If OR_Q010 = 6 "Other – specify", go to OR_N010S. Otherwise, go to OR_Q015.

OR_N010S INTERVIEWER: Specify.

(80 spaces)

OR_C013 If OR_N010S = DK, R, then set OR_N010S to blank and set OR_Q010 to DK, R.
Otherwise, go to OR_Q015

OR_Q015 **Does anyone in your household operate a farm on this property?**

INTERVIEWER: Property is interpreted as the land and buildings associated with the dwelling.

- 1 Yes (Go to END_BLOCK)
- 2 No

OR_Q020 **Does anyone in your household operate a business from this dwelling or property?**

INTERVIEWER: Property is interpreted as the land and buildings associated with the dwelling.

- 1 Yes
- 2 No

END_BLOCK

Call **Tenure**

Tenure

TN_Q01 **Is this dwelling owned by a member of this household?**

- 1 Yes
- 2 No

END_BLOCK

IF TN_Q01 = Yes, call **Mortgage**
ELSEIF TN_Q01 = No, call **Renters**
ELSEIF TN_Q01 = DK, R, call **Roster Introduction**
ENDIF

Mortgage

MTGE_Q01 **Is there a mortgage on this dwelling?**

- 1 Yes
- 2 No

END_BLOCK

Call **Owners**

Owners

OW_C001 If MTGE_Q01 = No, go to OW_Q045. Otherwise, go to OW_Q005

OW_Q005 **Are property taxes included in your mortgage payments?**

- 1 Yes
- 2 No

OW_Q010 **Do you have more than one mortgage on your dwelling?**

- 1 Yes (Go to OW_C030)
- 2 No

OW_Q015 **How often do you make regular mortgage payments?**

01 Weekly
02 Every two weeks
03 Twice a month
04 Biweekly
05 Monthly
06 Quarterly
07 Annually
08 Other - specify

OW_C015 If OW_Q015 = 04 "Biweekly", go to OW_Q020.
If OW_Q015 = 08 "Other - specify", go to OW_N015S
If OW_Q015 = DK, R, go to OW_Q045.
Otherwise, go to OW_C020

OW_N015S INTERVIEWER: Specify

(80 spaces)
(Refuse/Don't know and null are not allowed)

go to OW_Q045

OW_Q020 **Is that:**

1 **every two weeks?**
2 **twice a month?**

OW_C020 If OW_Q005 = Yes, go to OW_Q025. Otherwise, go to OW_Q030

OW_Q025 **How much do you pay for your mortgage [prefill from OW_Q015],
including your property taxes? Exclude irregular and lump sum payments.**

Hard range: Minimum: 0
Maximum: 99999995

Go to OW_Q045

OW_Q030 **How much do you pay for your mortgage [prefill from OW_Q015]?
Exclude irregular and lump sum payments.**

Hard range: Minimum: 0
Maximum: 99999995

Go to OW_Q045

OW_C030 If OW_Q005 = Yes, go to OW_Q035. Otherwise, go to OW_Q040

OW_Q035 **How much do you pay monthly for all these mortgages, including your
property taxes? Exclude irregular and lump sum payments.**

Hard range: Minimum: 0
Maximum: 99999995

Go to OW_Q045

OW_Q040 **How much do you pay monthly for all these mortgages? Exclude irregular and lump sum payments.**

Hard range: Minimum: 0
Maximum: 99999995

OW_Q045 **What is the total annual property tax bill for this dwelling? Include school taxes, special service charges and local improvements.**

Hard range: Minimum: 0
Maximum: 99999995

OW_Q050 **Is this dwelling part of a condominium development?**

1 Yes
2 No (Go to END_BLOCK)
DK, R (Go to END_BLOCK)

OW_Q055 **What is the regular monthly condominium fee for this dwelling?**

Hard range: Minimum: 0
Maximum: 99999995

END_BLOCK

IF TN_Q01 = No, call **Renters**
Otherwise, call **Roster Introduction**

Renters

RN_Q001 **Do you pay a monthly rent for this dwelling?**

1 Yes
2 No, rented without cash payment (Go to RN_Q020)
DK, R (Go to RN_Q010)

RN_Q005 **What is the regular monthly rent for this dwelling?**

Hard range: Minimum: 0
Maximum: 99999995

RN_Q010 **Which of the following is included in the rent?**

INTERVIEWER: Mark all that apply

- 01 **Parking**
- 02 **Heat**
- 03 **Hot water**
- 04 **Cold water**
- 05 **Electricity**
- 06 **Cable TV**
- 07 **Refrigerator**
- 08 **Cooking stove**
- 09 **Washer and dryer, other than coin operated**
- 10 **Furniture**
- 11 None of the above

RN_C010 If RN_Q010 = 10 "Furniture", go to RN_Q015. Otherwise, go to RN_Q020

RN_Q015 **Is it:**

- 1 **fully furnished?**
- 2 **partially furnished?**

RN_Q020 **Is your household's monthly rental payment reduced for any of the following reasons?**

- 1 **Government subsidized housing? This includes federal, provincial and municipal programs.**
- 2 **Any other reasons, such as services to landlord or company housing?**
- 3 No reduced rent

RN_Q025 **Is your rent calculated on the basis of your income?**

- 1 Yes
- 2 No

END_BLOCK

Call **Roster Introduction**

Roster Introduction

RS_R01 **The next few questions ask for important basic information about the people in your household.**

INTERVIEWER: Press <Enter> to continue.

END_BLOCK

Select all members where HHINFO.MEMTYP59 = 1 and call "**Previous**" **Roster 1**

"Previous" Roster 1

Previous **Do the following people still live or stay in this dwelling?**

RES_Q01 INTERVIEWER: Does [respondent name] still live or stay in this dwelling?

Press <PgDn> to confirm Household Roster and continue.

- 1 Yes
- 2 No

(Refuse/Don't know are not allowed)

PE_Q01 INTERVIEWER: Update the first name.

Press <PgDn> to confirm Household roster and continue.

PE_Q02 INTERVIEWER: Update the last name.

Press <PgDn> to confirm Household Roster and continue.

END_BLOCK

For each member:

If TRFLG58 <> 1 and RES_Q01 = 2 then set HHINFO.MEMTYP59 to "0"

If ((RES_Q01 = Yes and HHINFO.MEMTYP59 = 1) and (HHINFO.HMVFLG58 = 1 and MAM_Q01 = 1)), call **Reason Moved**

If RES_Q01 = Yes and HHINFO.HMVFLG58 <> 1, then
If there are household members with HHINFO.MEMTYP59 = 0, call
"Ghost" Roster
Otherwise, call **"Other" Roster 2**

If RES_Q01 = No or TRFLG58 = 1, call **Reason Left**

Reason Moved

RM_Q01 **Why does [respondent name] no longer reside at:
[Address]**

- 01 Change in marital status (got married/separated)
- 02 To follow a spouse or parent
- 03 Job-related reasons
- 04 Institutionalized for less than 6 months
- 05 Institutionalized for 6 months or more
- 06 Deceased
- 07 Moved to a new residence
- 08 Joint custody to live with other parent
- 09 Personal study-related reason
- 10 In foster care
- 11 Other

END_BLOCK

IF RM_Q01 = 05 "Institutionalized for 6 months or more", set HHINFO.MEMTYP59 to 7
A labour component will not be generated for this respondent

Reason Left

RL_Q01 **Why is [respondent name] no longer in this household?**

- 01 Change in marital status (got married/separated)
- 02 To follow a spouse or parent
- 03 Job related reasons
- 04 Institutionalized for less than 6 months
- 05 Institutionalized for 6 months or more
- 06 Deceased
- 07 Moved to a new residence
- 08 Joint custody to live with other parent
- 09 Personal study/related reason
- 10 In foster care
- 11 Other

END_BLOCK

When a response has been given for Reason Left and RL_Q01 <> 04, call **Date Moved**

Date Moved

MOV_C01 If reason left = "Deceased" (RL_Q01 = 06), use the word "die" in the question. If reason left = "Institutionalized for 6 months or more" (RL_Q01 = 05), use the words "enter the institution" in the question. Otherwise, use the word "leave" in the question.

MOV_Q01 **When did [he/she] [die / enter the institution / leave]?**
INTERVIEWER: Date must be January 1, [reference year] or after.

Call the Date block (see Appendix I).

END_BLOCK

IF RL_Q01 = 06 "Deceased", Set HHINFO.MEMTYP59 to 4
IF RL_Q01 = 05 "Institutionalized for 6 months or more", Call **Institution**
IF (RL_Q01 <> 04 "Institutionalized for less than 6 months, or RL_Q01 <> 06 "Deceased") and TRFLG58 <> 1, Call **Tracing Information**
IF TRFLG58 = 1 and if not last member, return to "**Previous**" **Roster 1**, once the Roster is complete, call **Thank you 1**, then invoke outcome code rules

Institution

INST_Q01 **What is the name of the institution?**

(80 spaces)

INST_Q02 **What is the address of the institution?**

Call the SLID Contact Address block (see Appendix I).

END_BLOCK

Set HHINFO.MEMTYP59 to 7

Tracing Information

TRA_Q01 **Can you give me an address for [respondent name]?**

- 1 Yes
- 2 No (Go to TRA_Q03)
- Refuse, Don't know (Go to TRA_Q03)

TRA_Q02 **What is the address for [respondent name]?**

Call the SLID Address block (see Appendix I).

TRA_Q03 **Can you give me a telephone number for [respondent name]?**

INTERVIEWER: If respondent provides an overseas telephone number, answer No to this question.

- 1 Yes
- 2 No (Go to TRA_Q05)
- Refuse, Don't know (Go to TRA_Q05)

TRA_Q04 **What is the telephone number for [respondent name], including the area code?**

Call the North American Telephone block (see Appendix I).

TRA_Q05 **Is there any other information that you can give me to help find [respondent name]?**

INTERVIEWER: Enter any other tracing information (such as employer name or phone number).
Press <Enter> to continue.

(147 spaces)

END_BLOCK.

***Set HHINFO.MEMTYP59 to 8

If there are household members with HHINFO.MEMTYP59 = 0, call "**Ghost**" Roster
Otherwise, call "**Other**" Roster 2

"Ghost" Roster

RS_Q03 **Does anyone else now live or stay here?**

- | | | |
|---|--------------------|-------------------|
| 1 | Yes | |
| 2 | No | (Go to END_BLOCK) |
| | Refuse, Don't know | (Go to END_BLOCK) |

Ghost **What are the names of the other people who live or stay here?**

RES_Q01 INTERVIEWER: Have any of these people returned?
This screen displays confidential information. DO NOT READ NAMES ALOUD. To do so is a breach of confidentiality. Let the respondent provide you with the names.
Does [respondent name] still live or stay in this household?
1 Yes
2 No
(Refuse, Don't know are not allowed)

PE_Q01 INTERVIEWER: Have any of these people returned?
This screen displays confidential information. DO NOT READ NAMES ALOUD. To do so is a breach of confidentiality. Let the respondent provide you with the names.

PE_Q02 Enter or update the first name.
INTERVIEWER: Have any of these people returned?
This screen displays confidential information. DO NOT READ NAMES ALOUD. To do so is a breach of confidentiality. Let the respondent provide you with the names.
Enter or update the last name.

A list of all ghost members for the household appears on the screen.

END_BLOCK

***If a ghost member has returned, Set HHINFO.MEMTYP59 to 5 for each "Returner".

Call "Other" Roster 2

"Other" Roster 2

RS_Q05 Does anyone else now live or stay here?

1	Yes	Set HHINFO.MEMTYP59 to 6
2	No	(Go to END_BLOCK)
	Refuse, Don't know	(Go to END_BLOCK)

Other

What are the names of the other people who live or stay here?

PE_Q01 INTERVIEWER: Add a person only if he/she has no other usual residence elsewhere.
Enter the first name.
To delete a name, replace the first name with *.
To continue, go to the blank line at the end of roster and press <Enter>.

PE_Q02 INTERVIEWER: Add a person only if he/she has no other usual residence elsewhere.
Enter the last name.
To delete a name, replace the first name with *.
To continue, go to the blank line at the end of roster and press <Enter>.

END_BLOCK

If MEMTYP59 = 5 "Returner" or 6 "Joiner", call **Joiners**

Joiners

JOI_C01 If Household Member Code = 5 "Returner", go to JOI_Q03.

JOI_C02 Initialize the temporary variable that contains the age filled in JOI_Q02 to 1.

JOI_Q02 **Is [respondent name] a child less than [age]?**

1	Yes	(Go to END_BLOCK)
2	No	(Go to JOI_Q03)

JOI_Q03 **Did [respondent name] live at this address at the beginning of [text month] [year]?**

1	Yes	(Go to END_BLOCK)
2	No	
	Refuse, Don't know	(Go to END_BLOCK)

JOI_Q04 **When did he/she move in?**

Call the Date block (see Appendix I).

Hard range: minimum: January 1 [reference year]

maximum: current system date

JOI_Q05 **In what province or territory was he/she living before moving to this address?**

10	Newfoundland and Labrador	48	Alberta
11	Prince Edward Island	59	British Columbia
12	Nova Scotia	60	Yukon
13	New Brunswick	61	Northwest Territories
24	Quebec	62	Nunavut
35	Ontario	76	U.S.A.
46	Manitoba	77	Outside of Canada and U.S.A.
47	Saskatchewan		

END_BLOCK

***If last member, return to **"Other" Roster 2** PE_Q01 to prompt for additional members.

Once the Roster (**"Previous" Roster 1**, **"Ghost Roster"**, **"Other" Roster 2**) is complete, If RL_Q01 = 04, Set HHINFO.MEMTYP59 to 1

6. Demographic module

Demographic information is collected/updated in both January and May. Only members with a MEMTYP59 of 1, 5 or 6 are asked demographic questions.

Throughout the Demographic questions, if there is only one person in the household, the questions will appear with the word "your" rather than the respondent's name.

Call Age With Confirmation

Age With Confirmation

AWC_C01 If day, month or year of birth is blank or DK/R, or age field is blank, go to AWC_Q02.

AWC_Q01 **We recorded [respondent name]'s date of birth as [text month of birth] [day of birth], [year of birth]. Is this correct?**

- 1 Yes (Go to END_BLOCK)
- 2 No
(Refuse, Don't know are not allowed)

AWC_Q02 **What is [respondent name]'s date of birth?**

Call the Date block (see Appendix I).

AWC_C02 If the year entered in AWC_Q02 is greater than the survey's reference year (refyear), go to END_BLOCK and set AWC_Q04 to 0.

AWC_C03A If DK/R is entered in either MONTH or YEAR for AWC_Q02, go to AWC_Q04. If DAY is DK/R and MONTH and YEAR contain valid information

and MONTH = [current month], go to AWC_Q04. If the entered date of birth is not different from the feedback date of birth, go to END_BLOCK.

AWC_Q03 **So [respondent name]’s age on [reference date] was [calculated age]. Is that correct?**
INTERVIEWER: Date of birth is [text month of birth] [day of birth], [year of birth].

- 1 Yes (Go to AWC_E05)
- 2 No, return and correct date of birth
- 3 No, collect age (Go to AWC_Q04)
(Refuse, Don't know are not allowed)

AWC_Q04 **What is [respondent name]’s age?**

[[[Age in years
(MIN: 0) (MAX: 130)
(Refuse, Don't know are not allowed)

AWC_E05 If the new age is different by more than three (3) years from the feedback age, pop up a soft edit with the following text: “The respondent’s age has been updated. Please confirm.” Otherwise, go to END_BLOCK

END_BLOCK

Call Sex

Sex

SEX_Q01 INTERVIEWER: Enter [respondent name]’s sex.
If necessary, ask: **(Is [respondent name] male or female?)**

- 1 Male
- 2 Female
(Refuse, Don't know are not allowed)

SEX_E02 If the new sex is different from the feedback sex, pop up a soft edit with the following text: “The respondent’s sex has been updated. Please confirm.” Otherwise, go to END_BLOCK.

END_BLOCK

If age > 15, call **Marital Status With Confirmation**
Otherwise, set MSWC_Q02 to 06 "single, never married" and go to END_BLOCK.

Marital Status With Confirmation

MSWC_C01 If marital status field is blank or DK/R, go to MSWC_Q02.

MSWC_Q01 **We recorded [respondent name]’s marital status as [marital status]. Is this correct?**

- 1 Yes (Go to END_BLOCK)
- 2 No
Refuse, Don't know (Go to END_BLOCK)

MSWC_Q02 **What is [respondent name]’s marital status? Is [he/she]:**
INTERVIEWER: Read categories to respondent.

- 01 ... married?
- 02 ... living common-law?
- 03 ... widowed?
- 04 ... separated?
- 05 ... divorced?
- 06 ... single, never married?

END_BLOCK

If MSWC_Q01 = No, set HHINFO.RELFLG58 to 1 and call **Marital Status Change**
Otherwise, if not last member, go to the next member
Once all members are confirmed, call **Relationship Without Confirmation**

Marital Status Change

MSC_Q01 **When did [respondent name]’s marital status change?**
INTERVIEWER: Date must be January 1, [reference year] or after.

Call the Date block (see Appendix I).

END_BLOCK

If not last member, go to next member until all members are complete.
If HHINFO.PHASEID = 1 and demographics are complete for all members:
If there is more than one person in the household and (TRFLG58 <>1 and
HHINFO.RELFLG58 = 1), call **Relationship Without Confirmation**
Otherwise, call **CAI Shut-Off**
If HHINFO.PHASEID = 2, call **CAI Shut-Off**

7. Relationship module

Relationship Without Confirmation

RNC_Q1	What is the relationship of:	[respondent name]	[(Age, sex)]
	to:	[respondent name]?	[(Age, sex)]
01	Husband/Wife		
02	Common-law partner		
03	Father/Mother	(Go to RNC_Q2A)	
04	Son/Daughter	(Go to RNC_Q2B)	
05	Brother/Sister	(Go to RNC_Q2C)	
06	Foster father/mother		
07	Foster son/daughter		
08	Grandfather/mother		
09	Grandson/daughter		
10	In-law	(Go to RNC_Q2D)	
11	Other related	(Go to RNC_Q2E)	
12	Unrelated	(Go to RNC_Q2F)	
RNC_Q2A	What is the relationship of:	[respondent name]	[(Age, sex)]
	to:	[respondent name]?	[(Age, sex)]

Once Relationships are completed for each member, call **CAI Shut-Off**

CAI Shut-Off

CAI_SO INTERVIEWER: This is the end of the component. Return to previously answered questions to make any necessary corrections, or select <Exit> to exit the component.

- 1 Exit
 (Refuse, Don't know are not allowed)

END_BLOCK

8. Exit Component

Outcome Code

OC_C01 If all components are complete, set a Final Outcome Code of 70 “Fully complete” and go to END_BLOCK.

OC_N01 INTERVIEWER: Is the case in-progress or final?

- 1 In-Progress codes
- 2 Final codes (Go to OC_N03)
 (Refuse, Don't know are not allowed)

OC_N02 INTERVIEWER: Assign the appropriate in-progress outcome code.

- 11 No one home / No answer
- 12 Regular busy signal
- 13 Answering machine or service - no message left
- 14 Answering machine or service - message left
- 15 Call screened/blocked/forwarded
- 18 Interview prevented due to weather conditions
- 20 Absent for duration of survey
- 21 Interview requested in other official language
- 22 Language barrier (not official language)
- 23 Interview suspended/interrupted
- 24 Soft appointment; call-back required
- 25 Hard appointment; call-back required
- 26 Verification of survey requested
- 28 Request for interview by another interviewer
- 29 Request for personal interview
- 30 Tracing required
- 38 Tracing source appointment
- 63 Already interviewed for this survey
- 71 Partially completed
- 80 Refusal
- 81 Refusal soft appointment; call back required
- 90 Unusual/Special circumstances
 (Refuse, Don't know are not allowed)

Go to END_BLOCK.

OC_N03 INTERVIEWER: Assign the appropriate final outcome code.

- 11 No one home / No answer
- 15 Call screened/blocked/forwarded
- 17 No phone
- 18 Interview prevented due to weather conditions
- 20 Absent for duration of survey
- 22 Language barrier (not official language)
- 29 Request for personal interview
- 36 Unable to trace
- 57 Moved outside Canada
- 60 Institutionalized
- 63 Already interviewed for this survey
- 64 Deceased
- 66 Sample overlap
- 71 Partially completed
- 80 Refusal
- 90 Unusual/Special circumstances
(Refuse, Don't know are not allowed)

OC_C04 If Final Outcome Code = 80 “Refusal”, go to OC_N04. If Final Outcome Code = 90 “Unusual/Special circumstances”, go to OC_N05. Otherwise, go to END_BLOCK.

OC_N04 INTERVIEWER: Record the reason for the refusal.

- 01 Dangerous / rude attitude
- 02 Won't answer the door
- 03 Not interested / doesn't want to participate
- 04 Doesn't want to be disturbed
- 05 Doesn't have the time
- 06 Against the government or Statistics Canada
- 07 Doesn't believe in or want to hear about statistics
- 08 Doesn't believe in or want to hear about surveys
- 09 Recently completed a survey (doesn't want to again)
- 10 Doesn't believe the info is secure (confidentiality)
- 11 Doesn't want to give personal information
- 12 Says not obligated / wants legal proof
- 13 Can get info somewhere else (e.g. Revenue Canada)
- 14 Adamant refusal (no reason, e.g., shuts the door or hangs up the phone)
- 15 Doesn't want to continue the survey (no more follow-ups)
- 16 Same household, refusal maintained (for follow-ups only)
- 17 Why me? Tells you to choose someone else
- 18 Other - Specify
(Refuse, Don't know are not allowed)

If not 18 “Other -Specify”, go to END_BLOCK.

OC_N04S INTERVIEWER: Specify.

(80 spaces)
(Refuse, Don't know and blank are not allowed)

Go to END_BLOCK.

EM_Q02 **What is the new address?**

Call the Address block (see Appendix I).

END_BLOCK

Call **Contact 1**

Contact 1

CON1_RINT **In case you move or change telephone numbers, it would be helpful if you could provide the name, telephone number and address of a relative or a friend who could help us to contact [you].**

INTERVIEWER: Press <Enter> to continue.

CON1_Q01 **I want to emphasize that Statistics Canada will contact this person only if there are difficulties in reaching [you].**

FNAME INTERVIEWER: Enter the first name.

If Refuse or Don't know is entered, ask:

CONFNAME INTERVIEWER: Do you wish to skip the remaining contact fields?

1 Yes (Fill contact fields with DK or R and go to END_BLOCK)

2 No
(Refuse, Don't know are not allowed)

LNAME INTERVIEWER: Enter the last name.

CON1_Q02 **What is the telephone number for [name of first contact], including the area code?**

Call the North American Telephone block (see Appendix I).

CON1_Q03 **What is the address for [name of first contact]?**

Call the SLID Contact Address block (see Appendix I).

END_BLOCK

IF Contact 1 <> Refuse/Don't know, call **Contact 2**

Contact 2

CON2_Q01 **Is there someone else we could call to help us contact [you]? Again, Statistics Canada will contact this person only if there are difficulties in reaching [you] and then only to obtain your new address and telephone number.**

FNAME INTERVIEWER: Enter the first name.

If DK or R is entered, ask:

CONFNAME INTERVIEWER: Do you wish to skip the remaining contact fields?

1 Yes (Fill contact fields with DK or R and go to END_BLOCK)

2 No
(Don't know/Refuse are not allowed)

LNAME INTERVIEWER: Enter the last name.

CON2_Q02 **What is the telephone number for [name of second contact], including the area code?**

Call the North American Telephone block (see Appendix I).

CON2_Q03 **What is the address for [name of second contact]?**

Call the SLID Contact Address block (see Appendix I).

END_BLOCK

Call **Thank You**

If household is in its final year of SLID (wave 6):

For all members where Age59 > 15 AND Memtype59 = 1, 5 or 6:

If ((HHINFO.PHASEID = 1 "Labour" and HHINFO.TAXPRM59 = 1 or 5) OR
(HHINFO.PHASEID = 1 "Labour" and EN_Q010 = 1 "gave tax permission"))
OR (HHINFO.PHASEID = 2 "Income"), Then go to TY_R02

Otherwise, go to TY_R01

Thank You

TY_R01 **Thank you for your participation in the Survey of Labour and Income Dynamics.
Have a nice day/evening.**
INTERVIEWER: Press <Enter> to continue.

Go to END_BLOCK

TY_R02 **This was your final interview for the Survey of Labour and Income Dynamics. Thank you for your participation.**
INTERVIEWER: Press <Enter> to continue.

END_BLOCK

Call **Cai Shut Off**

CAI Shut-Off

CAI_SO INTERVIEWER: This is the end of the component. Return to previously answered questions to make any necessary corrections, or select <Exit> to exit the component.

1 Exit
(Refuse, Don't know are not allowed)

END_BLOCK

If Final Outcome Code = 80 "Refusal" and level is Senior or PM, call **Action Code**

If Final Outcome Code = 80 "Refusal" and level is Interviewer, set Action Code to 0

Action Code

AC_N01 INTERVIEWER: Do you wish to assign an action code to this case?

1 Yes

2 No (Set Action Code to 0 "Proceed to interview" and go to END_BLOCK)
(Refuse, Don't know are not allowed)

AC_N02 INTERVIEWER: Select the action code to be assigned to the case.

0 Proceed to interview

1 Attempt to interview - letter sent

2 Attempt to interview - respondent contacted

3 Do not interview again unless complete change in household membership

4 Do not interview again under any circumstances

5 Retain in RO
(Refuse, Don't know are not allowed)

END_BLOCK

9. Tracing component

Cases will be sent to the Tracing group as a result of the answers given to certain questions in the Entry module.

Tracing required for household

A household will be sent to tracing if the interviewer is unable to make contact with the respondents after several tries or when someone tells them the household has moved.

If, after many attempts, the answer to CN_N02 (Have you made contact?) is 'No' and the interviewer assigns an in-progress code of 30 (tracing required), the case will be sent to the Tracing group with the original sample identification number.

If the answer to SL_Q01 (Do any of the following people still live or stay in this household?) is 'No', the system automatically assigns an in-progress code of 30 (tracing required) and the case is sent to the Tracing group with the original sample identification number.

Tracing required for mover(s)

Each time one or more, but not all, household members move from a household, a new household containing these movers is created.

If the answer to RES_Q01 (Do the following people still live or stay in this household?) is 'No' for one or more household members, the reason for the move, the date of the move, the telephone number and address of the mover, and any other pertinent information will be asked. Once the application has exited the Entry component (i.e. all demographic and relationship information for the

remaining members has been collected), a new household with a new sample identification number will be generated for the member(s) who have left and will automatically be sent to the Tracing group by the system.

All persons who have moved out of the household are moved together to form a case for tracing. During later contact with those members, it will be determined if they all live in one household or if additional households (cases) need to be created.

Each case will contain the following information

The original Case ID, phone number and address will appear at the top of the screen in the case of a household move. For movers in a newly created household, the new Case ID, previous address and previous phone number will appear.

A Members list will contain the name(s) of the new household member(s) with the old household members appearing as ghosts. Demographic information will also appear for all members (age, sex, marital status and member status).

Trace Sources are listed which contain the contact names and addresses collected during previous interviews, along with other trace sources which were added during tracing in previous years. The most recent source for movers, prev hhld, consists of the tracing information collected in the Entry module of the recent interview with the last household. Interviewers may also add new trace sources resulting from information obtained either through one of the other sources or through new research (i.e. local operator, post office, phone book, etc.).

A tracing interview is conducted with questions designed to lead the interviewer through an interview with the source or possibly the respondent. The results of the interview will be assigned automatically and will be one of five: Dead end; New lead; Appointment; Call back required; or Survey which will load the SLID application so that the interview can be completed.

10. Edits

RM_Q01:

If the feedback age of the longitudinal respondent is less than 16 and “Change in marital status (got married/separated)” is selected as the reason the respondent moved, pop up a soft edit with the following text: “The category ‘Change in marital status (got married/separated)’ has been selected for a household member less than 16 years old. Please confirm.”

If the feedback age of the longitudinal respondent is less than 15 and “Job-related reasons” is selected as the reason the respondent moved, pop up a soft edit with the following text: “The category ‘Job-related reasons’ has been selected for a household member less than 15 years old. Please confirm.”

If the feedback age of the longitudinal respondent is 19 or more and “Joint custody to live with other parent” is selected as the reason the respondent moved, pop up a soft edit with the following text: “The category ‘Joint custody to live with other parent’ has been selected for a household member 19 years of age or older. Please confirm.”

If the feedback age of the longitudinal respondent is less than 15 and “Personal study-related reason” is selected as the reason the respondent moved, pop up a soft edit with the following text: “The category ‘Personal study-related reason’ has been selected for a household member less than 15 years old. Please confirm.”

If the feedback age of the longitudinal respondent is 18 or more and “In foster care” is selected as the reason the respondent moved, pop up a soft edit with the following text: “The category ‘In foster care’ has been selected for a household member 18 years of age or older. Please confirm.”

RL_Q01:

If the feedback age of the longitudinal respondent is less than 16 and “Change in marital status (got married/separated)” is selected as the reason the respondent moved, pop up a soft edit with the following text: “The category ‘Change in marital status (got married/separated)’ has been selected for a household member less than 16 years old. Please confirm.”

If the feedback age of the longitudinal respondent is less than 15 and “Job-related reasons” is selected as the reason the respondent moved, pop up a soft edit with the following text: “The category ‘Job-related reasons’ has been selected for a household member less than 15 years old. Please confirm.”

If the feedback age of the longitudinal respondent is 19 or more and “Joint custody to live with other parent” is selected as the reason the respondent moved, pop up a soft edit with the following text: “The category ‘Joint custody to live with other parent’ has been selected for a household member 19 years of age or older. Please confirm.”

If the feedback age of the longitudinal respondent is less than 15 and “Personal study-related reason” is selected as the reason the respondent moved, pop up a soft edit with the following text: “The category ‘Personal study-related reason’ has been selected for a household member less than 15 years old. Please confirm.”

If the feedback age of the longitudinal respondent is 18 or more and “In foster care” is selected as the reason the respondent moved, pop up a soft edit with the following text: “The category ‘In foster care’ has been selected for a household member 18 years of age or older. Please confirm.”

MOV_Q01:

If a date for the last response interview is available from the survey's sample file and the date entered is before that date, pop up a hard edit with the following text: "Date cannot be before [last response interview date]. Please return and correct."

If a reference date is available from the survey's sample file (or the current/system date is the reference date) and the date entered is after that date, pop up a hard edit with the following text: "Date cannot be after [reference date]. Please return and correct."

"Ghost" roster PE_Q01 and PE_Q02:

If the first name is updated in PE_Q01, pop up a soft edit with the following text: "This is a ghost member. Are you sure you want to change the first name? If adding a new member, go back and enter the name on the next blank line."

If the last name is updated in PE_Q02, pop up a soft edit with the following text: "This is a ghost member. Are you sure you want to change the last name? If adding a new member, go back and enter the name on the next blank line."

If both first name and last name is updated in PE_Q01 & PE_Q02, pop up a hard edit with the following text: "Both the first and last name of a ghost member cannot be changed. If adding a new member, go back and enter the name on the next blank line."

"Other" roster PE_Q01 and PE_Q02 :

If no names are entered, pop up a hard edit with the following text: "No names were entered. Return to the roster and enter at least one name, or return to RS_Q05 and change the answer to 'No'."

JOI_Q04:

If the date entered is after the current system date, pop up a hard edit with the following text: "Date cannot be after [current system date]. Please return and correct."

AWC_Q02:

If the entered year is more than 130 years before the current year, pop up a hard edit with the following text: "Year cannot be before [current year - 130]. Please return and correct."

If the date entered is after the current system date, pop up a hard edit with the following text: "Date cannot be after [current system date]. Please return and correct."

AWC_Q03:

If the response is 2 "No, return and correct date of birth", pop up a hard edit with the following text: "Return to AWC_Q02 and correct the date of birth."

MSC Q01:

If the date entered is before January 1, [reference year], pop up a hard edit with the following text: "Date cannot be before January 1, [reference year]. Please return and correct."

If the date entered is after the current system date, pop up a hard edit with the following text: "Date cannot be after [current system date]. Please return and correct."

RNC Q01:

If the age of one or both of the respondents is less than 16 and "Husband/Wife" is selected as the relationship, pop up a soft edit with the following text: "The category "Husband/Wife" has been selected for a household member less than 16 years old. Please confirm."

If the sex of the two respondents is the same and "Husband/Wife" is selected as the relationship, pop up a hard edit with the following text: "The category "Husband/Wife" cannot be selected for household members with the same sex. Please return and correct."

If the marital status of one or both of the respondents is not "Married" and "Husband/Wife" is selected as the relationship, pop up a soft edit with the following text: "The category "Husband/Wife" has been selected for household members who are not married. Please confirm."

If the age of one or both of the respondents is less than 16 and "Common-law partner" is selected as the relationship, pop up a soft edit with the following text: "The category "Common-law partner" has been selected for a household member less than 16 years old. Please confirm."

If the sex of the two respondents is the same and "Common-law partner" is selected as the relationship, pop up a soft edit with the following text: "The category "Common-law partner" has been selected for household members with the same sex. Please confirm."

If the marital status of one or both of the respondents is not "Living common-law" and "Common-law partner" is selected as the relationship, pop up a soft edit with the following text: "The category "Common-law partner" has been selected for household members who are not living common-law. Please confirm."

If the age of the primary respondent (i.e. the first person in the question) is less than 12 and "Father/Mother" is selected as the relationship, pop up a soft edit with the following text: "The category "Father/Mother" has been selected. [Primary respondent name] is less than 12 years old. Please confirm."

If the age of the secondary respondent (i.e. the second person in the question) is less than 12 and “Son/Daughter” is selected as the relationship, pop up a soft edit with the following text: “The category “Son/Daughter” has been selected. [Secondary respondent name] is less than 12 years old. Please confirm.”

If the age of the primary respondent (i.e. the first person in the question) and the age of the secondary respondent (i.e. the second person in the question) are different by more than 34 years and “Brother/Sister” is selected as the relationship, pop up a soft edit with the following text: “The category “Brother/Sister” has been selected for household members different in age by more than 34 years. Please confirm.”

If the age of the primary respondent (i.e. the first person in the question) is less than 18 and “Foster father/mother” is selected as the relationship, pop up a hard edit with the following text: “The category “Foster father/mother” cannot be selected. [Primary respondent name] is less than 18 years old. Please return and correct.”

If the age of the secondary respondent (i.e. the second person in the question) is more than 17 and “Foster father/mother” is selected as the relationship, pop up a hard edit with the following text: “The category “Foster father/mother” cannot be selected. [Secondary respondent name] is more than 17 years old. Please return and correct.”

If the age of the primary respondent (i.e. the first person in the question) is more than 17 and “Foster son/daughter” is selected as the relationship, pop up a hard edit with the following text: “The category “Foster son/daughter” cannot be selected. [Primary respondent name] is more than 17 years old. Please return and correct.”

If the age of the secondary respondent (i.e. the second person in the question) is less than 18 and “Foster son/daughter” is selected as the relationship, pop up a hard edit with the following text: “The category “Foster son/daughter” cannot be selected. [Secondary respondent name] is less than 18 years old. Please return and correct.”

If the age of the primary respondent (i.e. the first person in the question) is less than 24 and “Grand father/mother” is selected as the relationship, pop up a soft edit with the following text: “The category “Grandfather/mother” has been selected. [Primary respondent name] is less than 24 years old. Please confirm.”

If the age of the primary respondent (i.e. the first person in the question) is less than the age of the secondary respondent (i.e. the second person in the question) and “Grand father/mother” is selected as the relationship, pop up a soft edit with the following text: “The category “Grandfather/mother” has been selected.

[Primary respondent name] is younger than [secondary respondent name]. Please confirm.”

If the age of the primary respondent (i.e. the first person in the question) and the age of the secondary respondent (i.e. the second person in the question) are different by less than 25 years and “Grand father/mother” is selected as the relationship, pop up a soft edit with the following text: “The category “Grand[father/mother” has been selected for household members different in age by less than 25 years. Please confirm.”

If the age of the secondary respondent (i.e. the second person in the question) is less than 24 and “Grand son/daughter” is selected as the relationship, pop up a soft edit with the following text: “The category “Grandson/daughter” has been selected. [Secondary respondent name] is less than 24 years old. Please confirm.”

If the age of the secondary respondent (i.e. the second person in the question) is less than the age of the primary respondent (i.e. the first person in the question) and “Grand son/daughter” is selected as the relationship, pop up a soft edit with the following text: “The category “Grandson/daughter” has been selected. [Secondary respondent name] is younger than [primary respondent name]. Please confirm.”

If the age of the primary respondent (i.e. the first person in the question) and the age of the secondary respondent (i.e. the second person in the question) are different by less than 25 years and “Grand son/daughter” is selected as the relationship, pop up a soft edit with the following text: “The category “Grandson/daughter” has been selected for household members different in age by less than 25 years. Please confirm.”

RNC Q2A:

If the age of the primary respondent (i.e. the first person in the question) is less than the age of the secondary respondent (i.e. the second person in the question) and “Birth father/mother” is selected as the relationship, pop up a hard edit with the following text: “The category “Birthfather/mother” has been selected. [Primary respondent name] is younger than [secondary respondent name]. Please return and correct.”

If the age of the primary respondent (i.e. the first person in the question) is less than 15 years more than the age of the secondary respondent (i.e., the second person in the question) and “Birth father/mother” is selected as the relationship, pop up a soft edit with the following text: “The category “Birth father/mother” has been selected for household members different in age by less than 15 years. Please confirm.”

If the sex of the primary respondent (i.e. the first person in the question) is “Female” and the age of the primary respondent is more than 50 years more than

the age of the secondary respondent (i.e. the second person in the question) and “Birth father/mother” is selected as the relationship, pop up a soft edit with the following text: “The category “Birth father/mother” has been selected for household members different in age by more than 50 years. Please confirm.”

If the age of the primary respondent (i.e. the first person in the question) is less than 15 and “Step father/mother” is selected as the relationship, pop up a soft edit with the following text: “The category “Step father/mother” has been selected. [Primary respondent name] is less than 15 years old. Please confirm.”

If the age of the primary respondent (i.e. the first person in the question) is less than 18 and “Adoptive father/mother” is selected as the relationship, pop up a hard edit with the following text: “The category “Adoptive father/mother” cannot be selected. [Primary respondent name] is less than 18 years old. Please return and correct.”

RNC Q2B:

If the age of the secondary respondent (i.e. the second person in the question) is less than the age of the primary respondent (i.e. the first person in the question) and “Birth son/daughter” is selected as the relationship, pop up a hard edit with the following text: “The category “Birth son/daughter” has been selected. [Secondary respondent name] is younger than [primary respondent name]. Please return and correct.”

If the age of the secondary respondent (i.e. the second person in the question) is less than 15 years more than the age of the primary respondent (i.e., the first person in the question) and “Birth son/daughter” is selected as the relationship, pop up a soft edit with the following text: “The category “Birth son/daughter” has been selected for household members different in age by less than 15 years. Please confirm.”

If the sex of the secondary respondent (i.e. the second person in the question) is “Female” and the age of the secondary respondent is more than 50 years more than the age of the primary respondent (i.e. the first person in the question) and “Birth son/daughter” is selected as the relationship, pop up a soft edit with the following text: “The category “Birth son/daughter” has been selected for household members different in age by more than 50 years. Please confirm.”

If the age of the secondary respondent (i.e. the second person in the question) is less than 15 and “Step son/daughter” is selected as the relationship, pop up a soft edit with the following text: “The category “Step son/daughter” has been selected. [Secondary respondent name] is less than 15 years old. Please confirm.”

If the age of the secondary respondent (i.e. the second person in the question) is less than 18 and “Adopted son/daughter” is selected as the relationship, pop up a hard edit with the following text: “The category “Adopted son/daughter” cannot be

selected. [Secondary respondent name] is less than 18 years old. Please return and correct.”

RNC_Q2C:

If the age of the primary respondent (i.e. the first person in the question) and the age of the secondary respondent (i.e. the second person in the question) are more than 17 and “Foster brother/sister” is selected as the relationship, pop up a hard edit with the following text: “The category “Foster brother/sister” cannot be selected for household members more than 17 years old. Please return and correct.”

Appendix 1

Invoked question blocks

Address Block

NUM INTERVIEWER: Enter the civic number.
If necessary, ask: **(What is the civic number?)**

(10 spaces)

If DK or R is entered, ask:

CONFNUM INTERVIEWER: Do you wish to skip the remaining address fields?

1 Yes (Fill address fields with DK or R based on NUM and go to END_BLOCK)

2 No
(Refuse, Don't know are not allowed)

STREET INTERVIEWER: Enter the street name.
If necessary, ask: **(What is the street name?)**

(50 spaces)
(Refuse, Don't know are not allowed)

This is a mandatory field; something must be entered here before the interviewer can continue.

APT INTERVIEWER: Enter the apartment number.
If necessary, ask: **(What is the apartment number?)**

(10 spaces)

CITY INTERVIEWER: Enter the city, town, village or municipality.
If necessary, ask: **(What is the city, town, village or municipality?)**

(30 spaces)
(Refuse, Don't know are not allowed)

This is a mandatory field; something must be entered here before the interviewer can continue.

PC INTERVIEWER: Enter only a Canadian postal code.
If necessary, ask: **(What is the postal code?)**

(6 spaces)

If null, Refuse, Don't know, go to PROV

CONFPROV INTERVIEWER: Confirm that the [province/territory] is [province or territory based on postal code].
 If necessary, ask: **(So the [province/territory] is [province or territory based on postal code]?)**
 1 Yes (Go to END_BLOCK)
 2 No
 (Refuse, Don't know are not allowed)

Assignment of province/territory based on first letter of postal code:
 A Newfoundland and Labrador R Manitoba
 C Prince Edward Island S Saskatchewan
 B Nova Scotia T Alberta
 E New Brunswick V British Columbia
 G, H, J Quebec
 K, L, M, N, P Ontario Y Yukon

PROV INTERVIEWER: Select the province or territory.
 If necessary, ask: **(What is the province or territory?)**
 10 Newfoundland and Labrador 48 Alberta
 11 Prince Edward Island 59 British Columbia
 12 Nova Scotia 60 Yukon
 13 New Brunswick 61 Northwest Territories
 24 Quebec 62 Nunavut
 35 Ontario 76 U.S.A.
 46 Manitoba 77 Outside of Canada and
 47 Saskatchewan U.S.A.
 (Refuse, Don't know are not allowed)

This is a mandatory field; something must be entered here before the interviewer can continue.

If 76 "U.S.A.", ask:
 STATE INTERVIEWER: Select the state.
 If necessary, ask: **(What is the state?)**
 01 Alabama 27 Montana
 02 Alaska 28 Nebraska
 03 Arizona 29 Nevada
 04 Arkansas 30 New Hampshire
 05 California 31 New Jersey
 06 Colorado 32 New Mexico
 07 Connecticut 33 New York
 08 Delaware 34 North Carolina
 09 District of Columbia 35 North Dakota
 10 Florida 36 Ohio
 11 Georgia 37 Oklahoma
 12 Hawaii 38 Oregon
 13 Idaho 39 Pennsylvania
 14 Illinois 40 Rhode Island
 15 Indiana 41 South Carolina
 16 Iowa 42 South Dakota
 17 Kansas 43 Tennessee
 18 Kentucky 44 Texas
 19 Louisiana 45 Utah
 20 Maine 46 Vermont
 21 Maryland 47 Virginia
 22 Massachusetts 48 Washington

23	Michigan	49	West Virginia
24	Minnesota	50	Wisconsin
25	Mississippi	51	Wyoming
26	Missouri		

(Refuse, Don't know are not allowed)

This is a mandatory field; something must be entered here before the interviewer can continue.

ZIP

INTERVIEWER: Enter only a US zip code.
If necessary, ask: **(What is the zip code?)**

_____ (12 spaces?)

END_BLOCK

Edits for Address Block

PC

If the first character of the postal code is not valid, pop up a hard edit with the following text: "Invalid first letter for postal code. Please return and correct."

If fewer than three characters are entered for the postal code, pop up a hard edit with the following text: "Postal code must be 6 characters long. Please return and correct."

If the format of the first three characters of the postal code is not valid, pop up a hard edit with the following text: "Invalid format for postal code. Format must be X9X9X9. Please return and correct."

If fewer than six characters are entered for the postal code, pop up a soft edit with the following text: "Postal code must be 6 characters long. Please return and correct."

If the format of the postal code is not valid, pop up a soft edit with the following text: "Invalid format for postal code. Format must be X9X9X9. Please return and correct."

If the first digit of the postal code is "X", go to PROV (i.e. do NOT ask CONFPROV).

PROV

If the province selected in PROV does not agree with the first digit of the postal code, pop up a soft edit with the following text: "The postal code is not consistent with the province or territory. Please confirm."

If either "U.S.A." or "Outside Canada and U.S.A." is selected in PROV and a postal code has been entered, pop up a soft edit with the following text: "You have selected a location outside Canada. Remove postal code or select correct province or territory."

ZIP

If the zip code is not completely numeric, pop up a hard edit with the following text: "Invalid format for zip code. Format must be numeric. Please return and correct."

Date Block

DAY INTERVIEWER: Enter the day.
If necessary, ask: **(What is the day?)**

□□
(MIN: 1) (MAX: 31)

MONTH INTERVIEWER: Select the month.
If necessary, ask: **(What is the month?)**

01	January	07	July
02	February	08	August
03	March	09	September
04	April	10	October
05	May	11	November
06	June	12	December

YEAR INTERVIEWER: Enter a four-digit year.
If necessary, ask: **(What is the year?)**

□□□□

END_BLOCK

Edits for Date Block

MONTH

If an invalid day/month combination is entered (e.g., DAY = 30 and MONTH = 02), pop up a hard edit with the following text: “An impossible day/month combination has been entered. Please return and correct.”

YEAR

If an invalid day/month/year combination is entered (e.g., DAY = 29 and MONTH = 02 and YEAR = 1999), pop up a hard edit with the following text: “An impossible day/month/year combination has been entered. Please return and correct.”

North American Telephone Block

CODE INTERVIEWER: Enter the area code.
If necessary, ask: **(What is the area code?)**
Enter “000” if no telephone.

□□□

Valid area codes for Canada by province:

10	Newfoundland	709
11	Prince Edward Island	902
12	Nova Scotia	902
13	New Brunswick	506
24	Quebec	418, 450, 514, 613, 819
35	Ontario	289, 416, 519, 613, 647, 705, 807, 905
46	Manitoba	204

47	Saskatchewan	306
48	Alberta	403, 780
59	British Columbia	250, 604, 778
60	Yukon	867
61	Northwest Territories	867
62	Nunavut	867

Valid area codes for US by state:

01	Alabama	205, 256, 334
02	Alaska	907
03	Arizona	480, 520, 602, 623
04	Arkansas	501, 870
05	California	209, 213, 310, 323, 341, 408, 415, 510, 530, 559, 562, 619, 626, 628, 650, 661, 669, 707, 714, 760, 764, 805, 818, 831, 858, 909, 916, 925, 949
06	Colorado	303, 435, 719, 720, 970
07	Connecticut	203, 475, 860, 959
08	Delaware	302
09	District of Columbia	202
10	Florida	305, 321, 352, 407, 561, 727, 786, 813, 850, 863, 904, 941, 954
11	Georgia	229, 404, 478, 678, 706, 770, 912
12	Hawaii	808
13	Idaho	208, 435
14	Illinois	217, 224, 309, 312, 618, 630, 708, 773, 815, 847
15	Indiana	219, 317, 765, 812
16	Iowa	319, 515, 641, 712
17	Kansas	316, 620, 785, 913
18	Kentucky	270, 502, 606, 859
19	Louisiana	225, 318, 337, 504, 985
20	Maine	207
21	Maryland	240, 301, 410, 443
22	Massachusetts	339, 351, 413, 508, 617, 774, 781, 857, 978
23	Michigan	231, 248, 313, 517, 586, 616, 734, 810, 906, 989
24	Minnesota	218, 320, 507, 612, 651, 763, 952
25	Mississippi	228, 601, 662
26	Missouri	314, 417, 573, 636, 660, 816
27	Montana	406
28	Nebraska	308, 402
29	Nevada	702, 775
30	New Hampshire	603
31	New Jersey	201, 609, 732, 856, 908, 973
32	New Mexico	505
33	New York	212, 315, 347, 516, 518, 607, 631, 646, 716, 718, 845, 914, 917
34	North Carolina	252, 336, 704, 828, 910, 919, 980

35	North Dakota	701
36	Ohio	216, 234, 330, 419, 440, 513, 614, 740, 937
37	Oklahoma	405, 580, 918
38	Oregon	503, 541, 971
39	Pennsylvania	215, 267, 412, 445, 484, 570, 610, 717, 724, 814, 835, 878
40	Rhode Island	401
41	South Carolina	803, 843, 864
42	South Dakota	605
43	Tennessee	423, 615, 731, 865, 901, 931
44	Texas	210, 214, 254, 281, 361, 409, 469, 512, 682, 713, 806, 817, 830, 832, 903, 915, 936, 940, 956, 972, 979
45	Utah	435, 801
46	Vermont	802
47	Virginia	540, 571, 703, 757, 804
48	Washington	206, 253, 360, 425, 509, 564
49	West Virginia	304
50	Wisconsin	262, 414, 608, 715, 920
51	Wyoming	307

TEL INTERVIEWER: Enter the telephone number.
If necessary, ask: **(What is the telephone number?)**

□□□□□□□□

END_BLOCK

Edits for North American Telephone Block

CODE

If Don't know/Refuse is entered, go to TEL. If "000" is entered, fill TEL with "0000000" and go to END_BLOCK.

If fewer than three characters are entered for the area code, pop-up a hard edit with the following text: "Area code must be 3 characters long. Please return and correct."

If the area code is not valid for Canada or the United States (and is not "000"), pop up a soft edit with the following text: "An invalid area code has been entered. Please confirm."

TEL

If fewer than seven characters are entered for the telephone number, pop-up a hard edit with the following text: "Telephone number must be 7 characters long. Please return and correct."

Thank You 1

TY1_R01 **Thank you for your time.**
INTERVIEWER: Press <Enter> to continue.

END_BLOCK

Appendix 2

Flow charts

FIGURE 1: Flow of the SLID Labour Interview

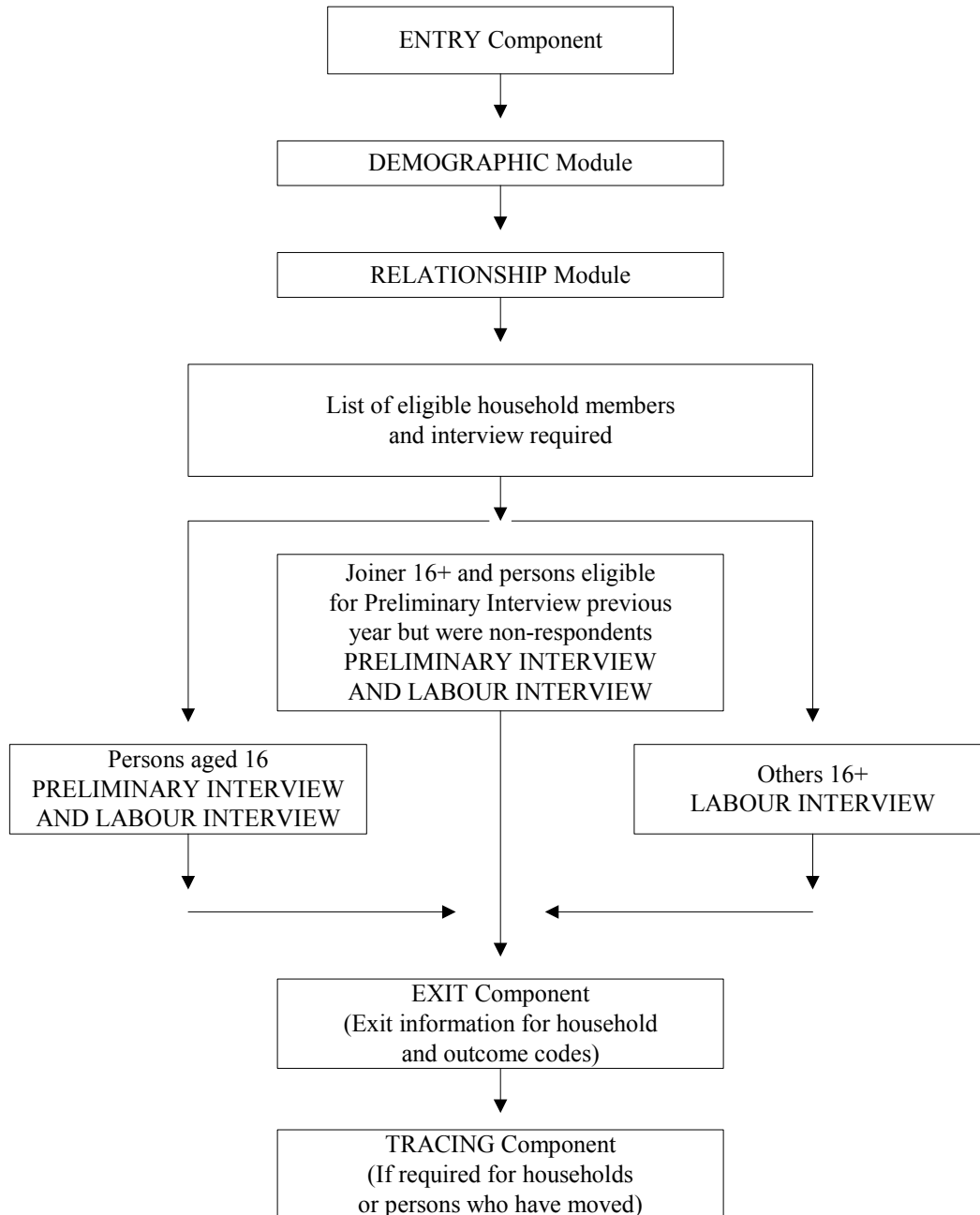


FIGURE 2: Flow of the Entry Exit Component for Labour once contact has been made

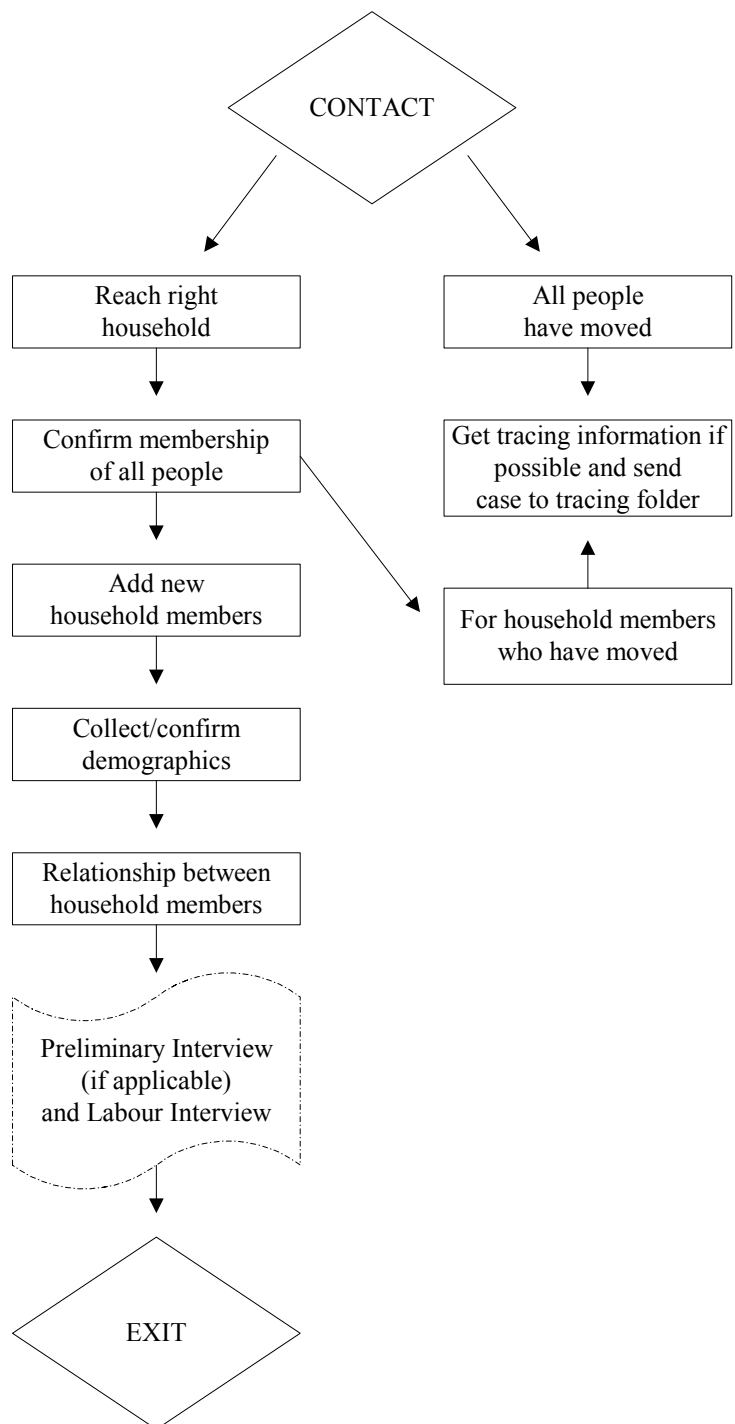


FIGURE 3: Flow of the SLID Income Interview

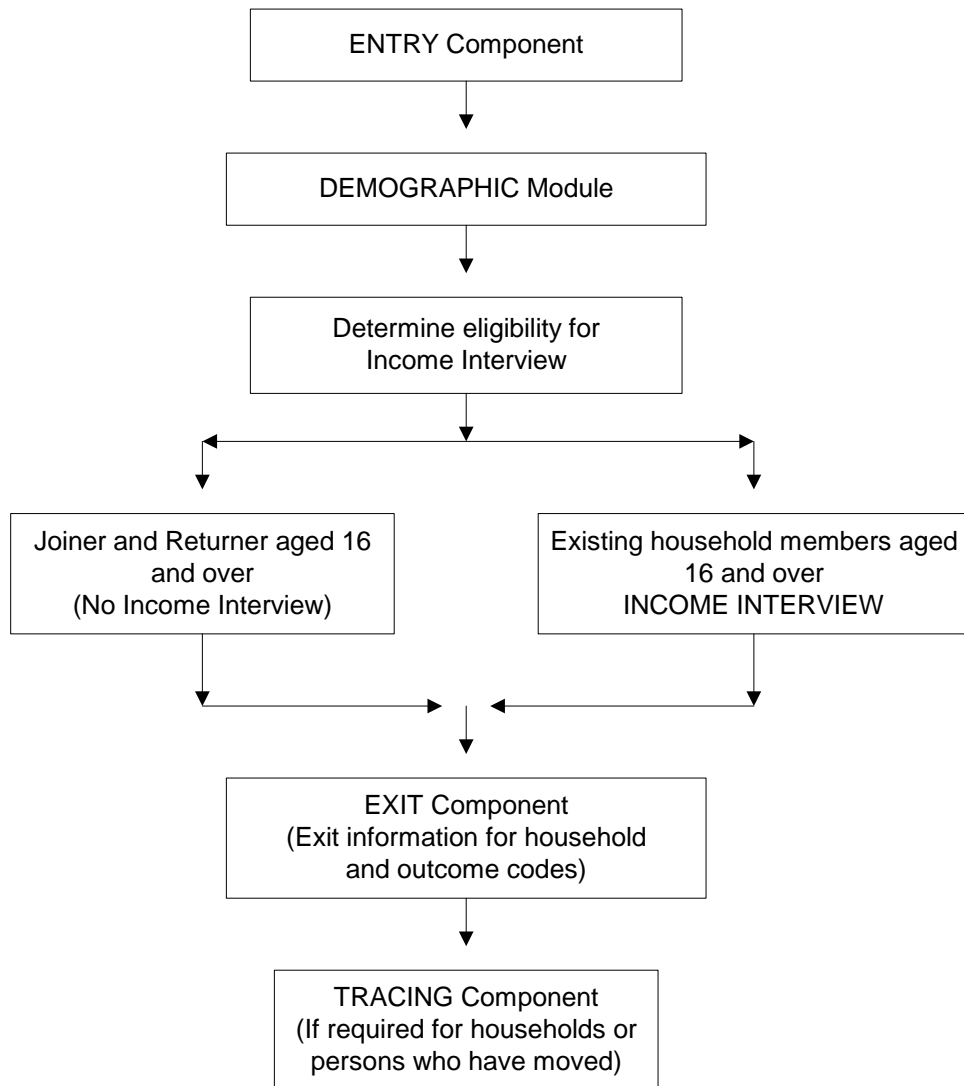


FIGURE 4: Flow of the Entry Exit Component for Income once contact has been made

