



Catalogue no. 75F0002MIE — No. 007

ISSN: 1707-2840

ISBN: 0-662-40530-7

## Research Paper

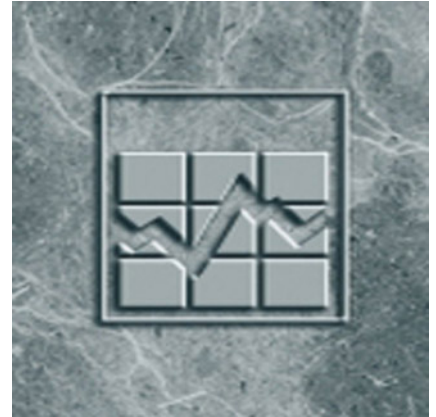
### Income Research Paper Series

# Survey of Labour and Income Dynamics (SLID), 2003 reference year: January 2004 labour interview questionnaire

by Andrea Hiltz

Income Statistics Division  
Jean Talon Building, Ottawa, K1A 0T6

Telephone: 613 951-7355



Statistics  
Canada

Statistique  
Canada

Canada

## How to obtain more information

Specific inquiries about this product and related statistics or services should be directed to: Income Statistics Division, Statistics Canada, Ottawa, Ontario, K1A 0T6 (telephone: (613) 951-7355; (888) 297-7355; [income@statcan.ca](mailto:income@statcan.ca)).

For information on the wide range of data available from Statistics Canada, you can contact us by calling one of our toll-free numbers. You can also contact us by e-mail or by visiting our website.

National inquiries line	1 800 263-1136
National telecommunications device for the hearing impaired	1 800 363-7629
Depository Services Program inquiries	1 800 700-1033
Fax line for Depository Services Program	1 800 889-9734
E-mail inquiries	<a href="mailto:infostats@statcan.ca">infostats@statcan.ca</a>
Website	<a href="http://www.statcan.ca">www.statcan.ca</a>

## Information to access the product

This product, catalogue no. 75F0002MIE, is available for free. To obtain a single issue, visit our website at [www.statcan.ca](http://www.statcan.ca) and select Our Products and Services.

## Standards of service to the public

Statistics Canada is committed to serving its clients in a prompt, reliable and courteous manner and in the official language of their choice. To this end, the Agency has developed standards of service that its employees observe in serving its clients. To obtain a copy of these service standards, please contact Statistics Canada toll free at 1 800 263-1136. The service standards are also published on [www.statcan.ca](http://www.statcan.ca) under About Statistics Canada > Providing services to Canadians.



Statistics Canada  
Income Statistics Division

Income research paper series

## **Survey of Labour and Income Dynamics (SLID), 2003 reference year: January 2004 labour interview questionnaire**

Published by authority of the Minister responsible for Statistics Canada

© Minister of Industry, 2005

All rights reserved. The content of this publication may be reproduced, in whole or in part, and by any means, without further permission from Statistics Canada, subject to the following conditions: that it is done solely for the purposes of private study, research, criticism, review, newspaper summary, and/or for non-commercial purposes; and that Statistics Canada be fully acknowledged as follows: Source (or "Adapted from", if appropriate): Statistics Canada, name of product, catalogue, volume and issue numbers, reference period and page(s). Otherwise, no part of this publication may be reproduced, stored in a retrieval system or transmitted in any form or by any means, electronic, mechanical, photocopy, for any purposes, without the prior written permission of Licensing Services, Marketing Division, Statistics Canada, Ottawa, Ontario, Canada K1A 0T6.

June 2005

Catalogue no. 75F0002MIE, Vol. 7

Frequency: Irregular

ISSN: 1707-2840

ISBN: 0-662-40530-7

Ottawa

La version française de cette publication est disponible sur demande (n° 75F0002MIF au catalogue).

---

### **Note of appreciation**

*Canada owes the success of its statistical system to a long-standing partnership between Statistics Canada, the citizens of Canada, its businesses, governments and other institutions. Accurate and timely statistical information could not be produced without their continued cooperation and goodwill.*

## **Executive Summary**

Every January, the Survey of Labour and Income Dynamics (SLID) Labour interview is conducted using computer-assisted interviewing (CAI). CAI is paperless interviewing. This document is therefore a written approximation of the CAI interview, or the questionnaire.

A labour interview is collected for all respondents 16 years of age and over. In January, 2004 data was collected for reference year 2003 from panels 3 and 4. Panel 3, in its fifth year, consisted of approximately 17,000 households and panel 4, in its second year, also consisted of approximately 17,000 households.

This document outlines the structure of the January 2004 Labour interview (for the 2003 reference year) including question wording, possible responses, and flows of questions.

## Table of contents

1. Introduction.....	6
2. What is new: .....	6
3. How to read this document .....	9
4. Content.....	13
5. Labour interview.....	17
5.1 DA Module.....	17
5.2 CH Module.....	32
5.3 SE Module.....	73
5.5 SP Module.....	80
5.6 ED Module.....	85
5.7 DI Module.....	120
5.8 EN Module.....	126

## **1. Introduction**

Every January, the Survey of Labour and Income Dynamics (SLID) Labour interview is conducted using computer-assisted interviewing (CAI). CAI is paperless interviewing. This document is therefore a written approximation of the CAI interview, or the questionnaire. The CAI process is as follows:

- (a) A question appearing on the computer screen is read aloud to the respondent.
- (b) The respondent's answer is directly entered by the interviewer.
- (c) Based on the answer given, and/or age or other flow criterion, the computer determines the next question to be asked and displays it on the screen.

This research paper presents the content of the 2004 Labour interview<sup>1</sup> (for the 2003 reference year) including question wording, possible responses, and flows of questions.

## **2. What is new:**

### **Modified questions:**

#### DA\_Q01

A text change was made to response category 01 in English to include 'self employed'. This term was already included in the French version.

#### DA\_E005

A clarification was added to the edit message so that the employer is not deleted if the company has only changed its name.

#### DA\_Q100

A new response category for "Contract ended" has been added in the place of response category 11. As a result, "Other (specify)" has been shifted to response category 12.

---

1. The household composition and demographic questions are presented in a separate document.

#### DA\_Q120

Text change only. The phrase 'including working for yourself' has been added to the question as it is possible that a respondent may not consider self employment as working for any other employer.

#### CH\_Q040

This question now uses a pre-fill to change the verb tense so that it reads properly for both current and past jobs.

#### CH\_Q105

A text change was made to the question in English only to clarify that a self employed person without employees may supervise as part of their tasks (as a contractor).

#### CH\_Q170

Slight text changes were made to response categories 06, 08 and 09.

A new response category for "Semi-retired or pre-retired" was added in the place of response category 10. As a result "Other (specify)" has been shifted to response category 11.

#### CH\_Q175

Slight text changes were made to the English question text by adding the phrase 'At this job' to make it consistent with the rephrasing of the question in French. The question was previously confusing in French as respondents thought they were being asked if they did any housework during their regular work schedule.

#### CH\_Q210

A flow change was made for "Yes", "Don't Know" and "Refuse" responses, for a paid worker with same job as last year and a wage > 0. The application will now flow to new logic in CH\_C240.

#### CH\_C240

New logic has been added, to verify if the interview is a proxy or non-proxy interview, to determine whether question CH\_Q240 should be asked.

#### CH\_Q240

This question is now only asked of the actual respondent (i.e. in a non-proxy interview).

#### CH\_Q245

Text changes were made to the question to clarify the meaning of 'wage'.

#### CH\_Q248

A flow change was made for a No response to the question when the old wage unit is 'daily'.

#### CH\_Q270

The reference to a 'group RRSP' was removed from the question as many respondents were confused because they did not know what a group RRSP was.

#### CH\_Q272

A change was made to the question text to clarify the concept of a 'group RRSP'.

#### CH\_Q275 and CH\_Q277

The response category "None of the above" is no longer read out loud to the respondent.

#### CH\_Q280

A change was made to the question text to clarify that only absences which occurred during the reference year should be reported.

An interviewer note was added to explain the concept of an absence.

#### CH\_Q330

A new interviewer note and two new edit messages were added to this question so that a year which is less than or greater than the reference year, may not be entered as the start date of the absence.

#### CH\_Q335

A new interviewer note and two new edit messages were added to this question so that a year which is greater than or less than the reference year, may not be entered as the end date of the absence.



CH\_Q345, CH\_Q390

A text change was made to category 10 to conform with LFS (Labour Force Survey) wording.

CH\_Q380

A new edit was added to the question so that a year which is greater than the reference year, may not be entered.

SP\_Q040

A text change was made to the question as respondents did not understand the difference between SP\_Q020 and SP\_Q040. SP\_Q040 was rephrased so that "During school holidays" appears first.

ED\_Q021A, Q032, Q057, Q082, Q107, Q132, Q325

A new edit was added to these questions which will be activated if the number of weeks reported exceeds the maximum number of weeks possible, based on the number of months reported in the previous question.

### **Deleted questions:**

CH\_Q253

This question was deleted to decrease respondent burden as respondents found the question intrusive and offensive. A new variable called MINWAG28 has been introduced which is the minimum wage per province. We will use this variable to determine whether or not the wage reported is the minimum wage.

## **3. How to read this document**

**Question numbers:** For each section, the question numbers refer to the actual numbers used in the software and which appear on an interviewer's computer screen. **Bold** text is read, as worded, by the interviewer. Instructions for the interviewer are preceded by the word, "INTERVIEWER" and are not read out loud to the respondent.

**Naming conventions:** Naming conventions conform to the standards for Statistics Canada social surveys.

Questions with:        Q (e.g. DA\_Q065) = question  
                              C (e.g. ED\_C001) = internal check  
                              N (e.g. ED\_N045) = interviewer instructions  
                              E (e.g. DA\_E080) = interviewer instruction edit

**Pre-fill items:** Shown in square brackets [ ] are items specific to each respondent's interview. The software adds the relevant information into the question, making it simply a matter of reading for the interviewer. Pre-fill items include:

[respondent] - This is the first and last name of the household member to whom the questions refer. This is not necessarily the person who is talking to the interviewer.

[fname] - This is the first name of the household member to whom the questions refer. This is not necessarily the person who is talking to the interviewer

[reference year] - This is the year **for which** the information is collected (2003).

[previous reference year] – This is the year prior to the reference year (2002).

[current year] - This is the year **during which** the information is collected (2004).

[employer] - This is the employer referred to in the question. Questions may be asked for a maximum of six employers. In each case, the specific employer's name is placed in the pre-fill item.

[class of worker] - Indicates whether the respondent is a paid worker, self-employed or working in a family business without pay.

[type of work] - This is a short description of the respondent's occupation or type of work performed, at last contact.

[industry] - This is a description of the industry of the employer as provided by the respondent.

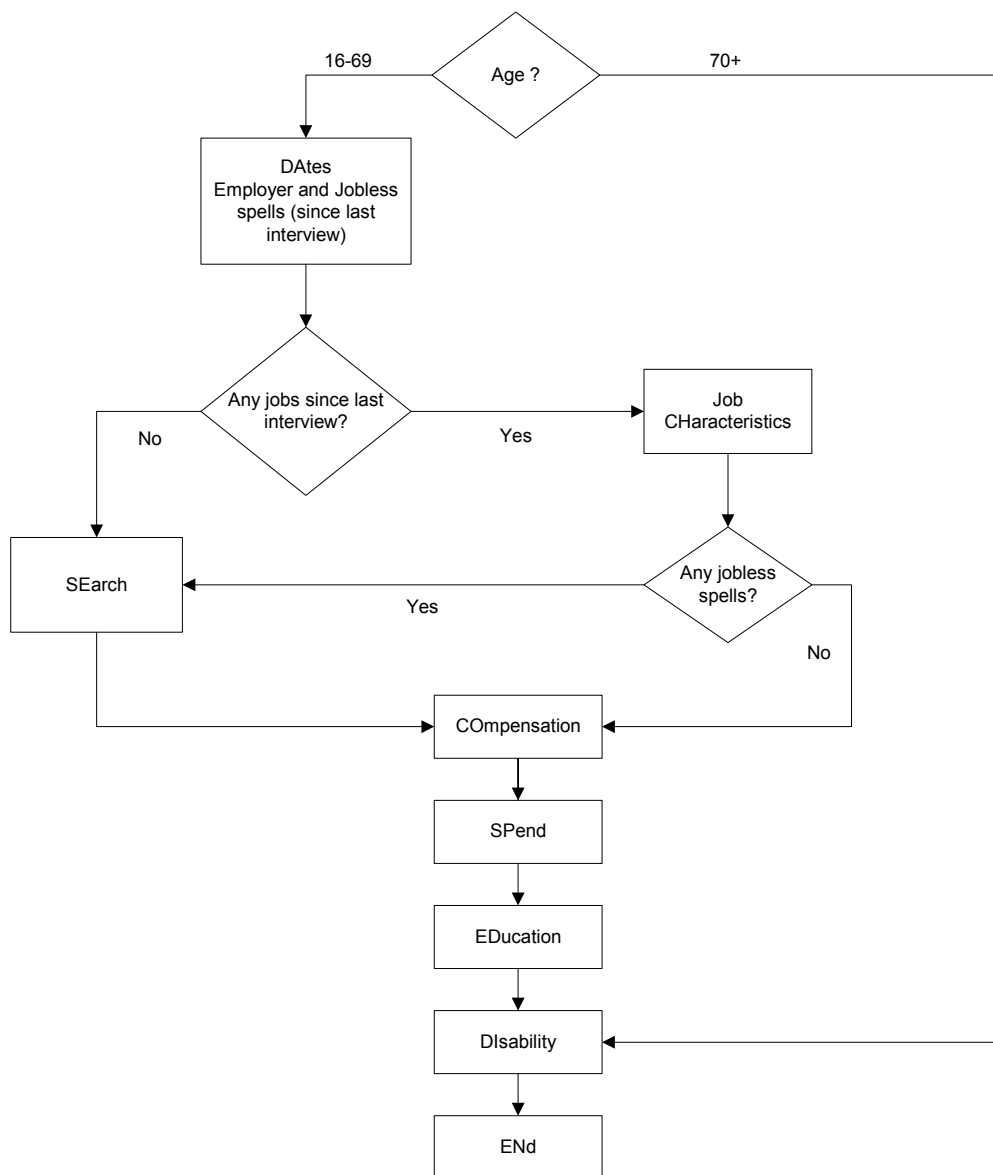
[start date] and [end date] - Depending on the question, these refer to either the start and end dates of a specific job, of an unpaid absence, or a jobless spell.

[prefill from Empl.oldwage and Empl.oldwageu] - Wage reported previous year for respondent.

**Ranges:** Hard and soft ranges are specified for some of the questions. The hard range gives the highest and lowest acceptable response values. For example, in CH\_Q110 (number of employees supervised directly) a hard range of 1 - 995 exists. If the interviewer tries to enter a number greater than 995, the system will not accept this.

The soft range specifies an upper limit which, if exceeded, will result in a probe to confirm that the amount entered is correct. If it is correct, the interviewer can enter it as long as it does not exceed the hard range. For example, if the respondent states that the number of people supervised was 65, this exceeds the soft range of > 60. If confirmed as correct, the interviewer can enter this amount as it does not exceed the 995 upper limit of the hard range.

**Dates:** All dates are in DD/MM/YYYY format unless otherwise specified.



## 4. Content

The general flow of the Labour interview is given in the flowchart on the previous page.

An initial divergence based on age can be seen. Those aged 16-69 are asked the labour series of questions, while those 70 years and over flow to DA\_Q001 (main activity) and then to the Disability (DI) module. For the former, if the respondent worked since the last interview, the characteristics of up to six jobs are asked, followed by identification of jobless spells. If a jobless spell occurred, the respondent is asked the Search (SE) series of questions. These are also asked for respondents who have not worked since the last Labour interview. The Compensation (CO) questions are then asked of all respondents, as are subsequent modules on Spend (SP), Education (ED), Disability (DI) and End-contact(EN).

The Labour interview is comprised of eight main modules as outlined in the following table.

The general flow of the Labour interview is given in the flowchart on the previous page.

An initial divergence based on age can be seen. Those aged 16-69 are asked the labour series of questions, while those 70 years and over flow to DA\_Q001 (main activity) and then to the Disability (DI) module. For the former, if the respondent worked since the last interview, the characteristics of up to six jobs are asked, followed by identification of jobless spells. If a jobless spell occurred, the respondent is asked the Search (SE) series of questions. These are also asked for respondents who have not worked since the last Labour interview. The Compensation (CO) questions are then asked of all respondents, as are subsequent modules on Spend (SP), Education (ED), Disability (DI) and End-contact(EN).

The Labour interview is comprised of eight main modules as outlined in the following table.

### Modules of the Labour survey and major components

DA	CH	SE	CO	SP	ED	DI	EN
Job Tenure	General Job Characteristics	Jobless Spells	Receipt of Employment Insurance	Receipt of Support Payments	Type of Educational Establishment	Identifies Disabilities/Activity Limitations	Permission to Link to Income Tax
Reasons for Leaving Job	Supervisory/Managerial Responsibilities	Job Search Activities	Receipt of Workers' Compensation	Payment of Support	Months/Weeks/Hours Attended School	Impact of Condition on Amount and/or the Ability to Work	
	Work Schedule		Receipt of Social Assistance or Welfare	Payments for Child Care	Information on Any Diplomas, Certificates or Degrees Earned		
	Wages & Fringe Benefits				Information on the Most Important Work-related Course Taken		
	Absences from Work for 1 or More Weeks						

DA: Dates -- Employer start and end dates are collected for up to six employers during the year. This module has an employer roster (a list of all employers the person worked for during the year), and a ghost employer roster (a list of former employers reported in previous interviews). Feeding back of employer names from the previous January also occurs in this module. For a person on unpaid absence at the beginning of last January, the absence as well as the employer name is fed back.

Regarding “Don’t know’s” in employer dates: To collect information on an employer, the interviewer must be able to establish the date the person started working for that employer. If the interviewer is able to establish the month the job began, but not the day, the computer will set the day to 01 and the employer will be accepted. Similarly, if the interviewer can establish the month the job ended, but not the day, the computer will set the day to 28. However, if the interviewer cannot get an estimate of the month in which the job started or ended, it is impossible to proceed with that employer, and it is deleted from the roster. If the respondent reports no employers during the past year, the respondent skips to SE.

The following classification of jobs is used in DA:

**Job Type 1** - a job at which the respondent was working on December 31<sup>st</sup> of the previous reference year.

**Job Type 2** - a job at which the respondent was not working on December 31<sup>st</sup> of the previous reference year but to which he/she was attached (i.e. on temporary lay-off or away on an absence of more than a week).

**Job Type 3** - a job not previously identified in the survey, generally one at which the respondent started working during the reference year.

Jobless spells are derived from the dates of employment.

Employment with each employer is characterized as ended or un-ended, referring to whether the respondent was working for the employer at the end of the reference year. If a job type 1 is denied, the job is deleted

without an array of probing questions. For job type 2, one probing question is asked if the job is denied.

- CH: Characteristics – This will be collected for up to six employers per respondent. For job type 1 and 2, information on employer name, and type of work performed is fed back to the respondent. A change in occupation and wages can be recorded, as can one change in work schedule for job types 1 and 2. This allows greater precision in deriving implicit hourly wage rates or total annual earnings from an employer (total annual earnings from all employers will also be collected in May in the income interview). The number of absences of one week or more (except paid vacation), and details on the first and last absences with each employer are also recorded.
- SE: Search -- If there was a jobless spell identified in 'DA' or if the respondent did not work at any time in the year, the flow will be directed to this module. For each jobless spell, there are a series of questions on job search, and the desire for employment. For people who begin the year with a jobless spell, the search status in January is fed back to the respondent only if they were looking for work.
- CO: Compensation – This module asks questions regarding receipt of Employment Insurance, Social Assistance, or Workers' Compensation. This information is collected for everyone, independently of any reported job absences and jobless spells. The information which is collected includes:
- receipt of Employment Insurance, Workers Compensation, and Social Assistance during reference year;
  - months received.
- SP: Spend – This module requests information on support payments, both paid and received. Also, there are questions on child care expenses. The first time SLID collected this type of information was for reference year 1999.
- ED: Education – This module on formal education includes educational activity during the year, and degrees, certificates or diplomas obtained. If



respondents attended more than one type of educational institution, several flows will result providing information also on field of study, program length, and time attended (months, weeks, hours). By asking question ED\_Q150 about other degrees, certificates or diplomas received during the reference year, this identifies situations where a respondent received a degree in the reference year although the program finished the previous year. In this section we have added a few questions on the most important work-related course taken by the respondent.

- DI: Disability – This module contains questions concerning disability, which have been modified in conjunction with questions that were asked in the 2001 Census. These disability questions are asked of all respondents. The basic structure of the questions concern disability at home, at work and in other activities, but a distinction is made in the questions asked for those who worked versus those who didn't work in the reference year. No questions are asked about disability at work for respondents aged 70+.
- EN: End – This module asks the tax permission question of each respondent in preparation for the May Income survey. If permission is given, then the next contact will be January of the next year, not in May.

## 5. Labour interview

### 5.1 DA Module

If respondent < 16 years old: No Labour interview, interview is complete and appstat = 61.  
Return to component screen.

If Hhinfo.prelflag = 1 go to DA\_Q001 (member is a joiner, a new panel or a member who turned 16), the proxy question will be asked in the Preliminary interview.

If Hhinfo.prelflag = 2 go to PR\_N001 (previously interviewed respondent), the proxy question will be asked in the Labour interview.

PR\_N001: INTERVIEWER: Select the name of the person who is providing the information. If the person is not on the list select 'Non-household member'.

go to DA\_Q001

Header: first and last name of respondent, industry and class of worker

DA\_Q001: **I'd like to ask you a few questions about his main activity at the end of [reference year]. Was [fname]'s main activity . . .**

**I'd like to ask you a few questions about her main activity at the end [reference year]. Was [fname]'s main activity . . .**

**I'd like to ask you a few questions about your main activity at the end of [reference year]. Was your main activity . . .**

01. **Working at a job or business or self employed?**
02. **Looking for work?**
03. **Going to school?**
04. **Keeping house?**
05. **Caring for other family members including young children?**
06. **Retired?**
07. **Long term illness or disability?**
08. **Doing volunteer work?**
09. **No main activity?**
10. Other (specify)
98. Refuse
99. Don't know

If answered "Other"  
Otherwise

go to DA\_Q001S  
go to DA\_C005

DA\_Q001S: INTERVIEWER: Specify

Maximum: 80 bytes

go to DA\_C005

If DA\_Q01 = 01 "Working" and compinfo.emtyp69 <> 1 and compinfo.emtyp69 <> 2, then set job type to 3 (new job)

DA\_C005: If age > 69 go to DI\_C001  
Otherwise,  
If EX\_Q001 = No set jobless spell to all year and go to SE\_C001  
  
Otherwise,  
If age is 16 - 69 if job type = 1, go to DA\_Q005  
if job type = 2, go to DA\_Q010  
otherwise, go to DA\_Q015

DA\_Q005: **Based on our interview of a year ago, he was working for [employer] around the beginning of January [reference year]. Is this correct?**

**Based on our interview of a year ago, she was working for [employer] around the beginning of January [reference year]. Is this correct?**

**Based on our interview of a year ago, you were working for [employer] around the beginning of January [reference year]. Is this correct?**

INTERVIEWER: Any spelling errors or clarifications can be made later in CH\_Q010

1. Yes
2. No
8. Refuse
9. Don't know

If Yes if Compinfo.prlflg59 = 1 go to DA\_C045  
if Compinfo.prlflg59 = 2 go to DA\_Q085 and set start date to 1/01/[reference year]

If No/Refuse/Don't know go to DA\_E005

DA\_E005: If the name has changed but the employer is the same, this is NOT a new employer. Return to DA\_Q005 and change the response to 'Yes'.  
Otherwise, respondent is denying working for this employer in [reference year]. Press 'D' to delete from the Employer Roster.  
  
go to DA\_C001

DA\_C001: If more job type 1 or 2 to be confirmed go to DA\_C120  
unless all employers have been denied then go to DA\_Q015.

Header information: Industry, class of worker

DA\_Q010: **Based on our interview of a year ago, he had a job with [employer], but he was not at work around the beginning of January [reference year]. Is this correct?** (any spelling errors or clarifications can be made later)

**Based on our interview of a year ago, she had a job with [employer], but she was not at work around the beginning of January [reference year]. Is this correct?** (any spelling errors or clarifications can be made later)

**Based on our interview of a year ago, you had a job with [employer], but you were not at work around the beginning of January [reference year]. Is this correct?** (any spelling errors or clarifications can be made later)

[Screen shows date absence began and reason for absence]

1. Yes
2. No
8. Refuse
9. Don't know

If Yes go to DA\_Q070  
If No/Refuse/Don't know go to DA\_Q025

DA\_Q015: **Did he work at a job or business in [reference year]?**

**Did she work at a job or business in [reference year]?**

**Did you work at a job or business in [reference year]?**

1. Yes
2. No
8. Refuse
9. Don't know

If Yes if there is a ghost employer on  
Compinfo.dbf, go to DA\_Q030;  
if no ghost employer, go to DA\_Q040



If Yes                                    set job type to 1;  
if Compinfo.prlflg59 = 1 go to DA\_C045  
if Compinfo.prlflg59 = 2 go to DA\_Q085

If No/Refuse/Don't know            go to DA\_E025

DA\_E025:    Respondent is denying working for this employer in [reference year]. Press 'D' to delete from the Employer Roster.

go to DA\_C120

DA\_Q030:    **For whom did he work?** (name of business, government department or person)

**For whom did she work?** (name of business, government department or person)

**For whom did you work?** (name of business, government department or person)

INTERVIEWER:    To select a ghost employer enter the number next to the employer name. To add a new employer, select 'New employer'.

go to DA\_C030

DA\_C030:    If ghost employer reported, set ghost job type to 3 and go to DA\_Q055.

If new employer reported, set job type to 3 and go to DA\_N035.

DA\_N035:    INTERVIEWER:    Enter name of employer (name of business, government department or person).

Maximum: 50 bytes

go to DA\_C035

DA\_C035:    If valid answer, set employer name.

If Refuse/Don't know set employer name to "this employer".

go to DA\_C045

DA\_Q040:    **For whom did he work?**

**For whom did she work?**

**For whom did you work?**

INTERVIEWER: Probe for name of business, government department or person.

Maximum: 50 bytes

go to DA\_C040

DA\_C040: Set job type to 3.  
If valid answer, set employer name.  
If Refuse/Don't know, set employer name to 'this employer'.

go to DA\_C045

DA\_C045: If Compinfo.prlflg59 = 1 go to DA\_Q045 (new panel, joiner  
January or May)  
If Compinfo.prlflg59 = 2 go to DA\_Q050 (previously  
interviewed respondent)

DA\_Q045: **When did he start working for [employer]?**

**When did she start working for [employer]?**

**When did you start working for [employer]?**

Interviewer enters day/month/year

Hard range: minimum: [reference year] minus ([age] minus 10)  
(10 years old)  
maximum: 31/12/[reference year]

If Refuse/Don't know in day or month set to 01  
If Refuse/Don't know in year go to DA\_E045  
Otherwise go to DA\_C046

DA\_E045: A value must be entered in year. Go back and enter a value.

DA\_C046: If the date reported in DA\_Q045 is prior to the reference year, then set the start date on the Employer Roster to January 1<sup>st</sup> of reference year;

Otherwise set start date to entry in DA\_Q045. This date is used to calculate jobless spells.

go to DA\_Q060





DA\_N055: INTERVIEWER: Dates are critical to continue the interview. Go back to DA\_Q055 and enter a month or year otherwise press 'D' to delete employer from Employer Roster.

go to DA\_C120

DA\_Q060: **Did he work for this employer before [year from DA\_Q045 or DA\_Q050]?**

**Did she work for this employer before [year from DA\_Q045 or DA\_Q050]?**

**Did you work for this employer before [year from DA\_Q045 or DA\_Q050]?**

1. Yes
2. No
8. Refuse
9. Don't know

If Yes go to DA\_Q065

If No/Refuse/Don't know go to DA\_Q085

DA\_Q065: **When did he first start working for [employer]?**

**When did she first start working for [employer]?**

**When did you first start working for [employer]?**

Interviewer enters month/year

Hard range: minimum: [reference year] minus ([age] minus 10)  
(10 yrs old)

maximum: answer in DA\_Q045/DA\_Q050

If Refuse/Don't know in month set to 01

If Refuse/Don't know in year go to DA\_E065

Otherwise go to DA\_Q085

DA\_E065: A value must be entered in year. Go back and enter a value.

DA\_Q070: **Did he return to work for [employer] in [reference year]?**

**Did she return to work for [employer] in [reference year]?**

**Did you return to work for [employer] in [reference year]?**

- 1. Yes
- 2. No
- 8. Refuse
- 9. Don't know

Yes go to DA\_Q075  
No if jobtype = 2 and DA\_Q005 = Yes,  
fill startdate with 01/01/[Refyear]  
and go to DA\_Q076;  
otherwise, go to DA\_Q076  
If Refuse/Don't know go to DA\_C120

DA\_Q075: **When did he return to work for [employer]?**

**When did she return to work for [employer]?**

**When did you return to work for [employer]?**

Interviewer enters day/month/year

Hard range: minimum: 01/01/[reference year]  
maximum: 31/12/[reference year]

If Refuse/Don't know in day or month set to 01  
If Refuse/Don't know in year go to DA\_E075  
If Compinfo.prlflg59 = 1 go to DA\_C045  
Otherwise go to DA\_Q085

DA\_E075: A value must be entered in year. Go back and enter a value.

DA\_Q076: **Does he expect to return to work for [employer]?**

**Does she expect to return to work for [employer]?**

**Do you expect to return to work for [employer]?**

- 1. Yes
- 2. No
- 8. Refuse
- 9. Don't know

If Yes go to DA\_C120 and set end date to  
31/12/[reference year]  
If No go to DA\_Q080

Otherwise go to DA\_C120

DA\_Q080: **When did he realize that he would not be returning to [employer]?**

**When did she realize that she would not be returning to [employer]?**

**When did you realize that you would not be returning to [employer]?**

Interviewer enters day/month/year

Hard range: minimum: 01/01/[reference year]  
maximum: 31/12/[reference year]

If Refuse/Don't know in day or month set to 01  
If Refuse/Don't know in year go to DA\_E080  
Otherwise go to DA\_E081

DA\_E080: A value must be entered in year. Go back and enter a value.

DA\_E081: Respondent did not work for this employer in [reference year].  
Press 'D' to delete from the Employer Roster.

go to DA\_Q100

DA\_Q085: **Did he still have a job with [employer] at the beginning of [current year]?**

**Did she still have a job with [employer] at the beginning of [current year]?**

**Did you still have a job with [employer] at the beginning of [current year]?**

1. Yes
2. No
8. Refuse
9. Don't know

If Yes go to DA\_C120 and set end date to 31/12/[reference year]  
If No/Refuse/Don't know go to DA\_Q090

DA\_Q090: **When did his job with [employer] end?**

**When did her job with [employer] end?**

**When did your job with [employer] end?**

Interviewer enters day/month/year

Hard range: minimum: if date in DA\_Q050 or date in DA\_Q045  
< [reference year] set minimum to  
01/01/[reference year];  
otherwise minimum = DA\_Q045 or  
DA\_Q050  
maximum: 31/12/[reference year]

If date entered is < date in DA\_Q045 or DA\_Q050, the following  
message pops up: Date job ended is before date job started.

If (date entered is < 01/01/[reference year]) and (DA\_Q005 = Yes),  
the following hard edit message pops up: Confirm date. Date job  
ended cannot be before January 1, [reference year]. If date is  
correct, go back to DA\_Q005 and change response to "No".

If Refuse/Don't know in day	set to 01
If Refuse/Don't know in month or year	go to DA_N095
Otherwise	go to DA_Q095

DA\_N095: Check dates. Month and year when job ended is necessary to  
continue this interview. Probe for dates; if not available press 'D'  
to delete employer from Employer Roster.  
Press Up arrow to go back.

go to DA\_C120

DA\_Q095: **Did he leave this job or did the job come to an end?**

**Did she leave this job or did the job come to an end?**

**Did you leave this job or did the job come to an end?**

1.	Left job	go to DA_Q100
2.	Job came to an end	go to DA_Q115
3.	Both	go to DA_Q100
8.	Refuse	go to DA_C120
9.	Don't know	go to DA_C120

DA\_Q100: **What was his main reason for leaving this job?**

**What was her main reason for leaving this job?**

**What was your main reason for leaving this job?**

01. Own illness or disability
02. Caring for own children
03. Caring for elder relative(s)
04. Other personal or family responsibilities
05. School
06. Found new job
07. Moved to a new residence
08. Dissatisfied with job
09. Retirement
10. To concentrate on other job
11. Contract ended
12. Other (specify)
98. Refuse
99. Don't know

If answered "Own illness or disability"	go to DA_Q105
If answered "Dissatisfied with job"	go to DA_Q110
If answered "Other"	go to DA_Q100S
Otherwise	go to DA_C120

DA\_Q100S: INTERVIEWER: Specify

Maximum: 80 bytes

go to DA\_C120

DA\_Q105: **Was this due to a work related illness or injury?**

1. Yes
2. No
8. Refuse
9. Don't know

go to DA\_C120

DA\_Q110: INTERVIEWER: If necessary ask:

**Can you be more specific about why he was not satisfied with this job?**

**Can you be more specific about why she was not satisfied with this job?**

**Can you be more specific about why you were not satisfied with this job?**

01. Poor pay
02. Not enough hours of work
03. Too many hours of work
04. Poor physical conditions (bad ventilation, too noisy, etc.)
05. Sexual harassment
06. Personal conflict with employer / other employees
07. Work too stressful
08. Other (specify)
98. Refuse
99. Don't know

If answered "Other"                      go to DA\_Q110S  
Otherwise                                      go to DA\_C120

DA\_Q110S    INTERVIEWER:    Specify

Maximum: 80 bytes

go to DA\_C120

DA\_Q115:    **What was the main reason why this job came to an end?**

01. Company moved
02. Company went out of business
03. Seasonal nature of work
04. Layoff / business slowdown (not caused by seasonal conditions)
05. Labour dispute
06. Dismissal by employer
07. Temporary job / contract ended
08. Other (specify)
98. Refuse
99. Don't know

If answered "Other"                      go to DA\_Q115S  
Otherwise                                      go to DA\_C120

DA\_Q115S    INTERVIEWER:    Specify

Maximum: 80 bytes

go to DA\_C120

DA\_C120: If there is another job type 1 to  
be confirmed go to DA\_Q005

If there is another job type 2 to  
be confirmed go to DA\_Q010

If DA\_Q010 = Yes and DA\_Q070 = Refuse  
or Don't know and there are no more  
employers go to SE\_C001

If 6 employers go to DA\_N120

Otherwise go to DA\_Q120

DA\_Q120: **Did he work for any other employers, including working for  
himself, in [reference year]?**

**Did she work for any other employers, including working for  
herself, in [reference year]?**

**Did you work for any other employers, including working for  
yourself, in [reference year]?**

1. Yes
2. No
8. Refuse
9. Don't know

If Yes go to DA\_Q040 and repeat for next  
employer.

If there is a ghost employer go to  
DA\_Q030 and repeat for next  
employer.

If No/Refuse/Don't know go to DA\_N120

DA\_N120: INTERVIEWER: Review the information. If changes are  
necessary use <PgUp> to go back. No  
further information is needed for deleted  
employers marked with an 'X'. Press  
<Enter> to continue.

Employer Name            Start Date            End Date

If respondent did not work in [reference year] go to SE\_C001

If respondent worked in [reference year] go to CH\_C001

## 5.2 CH Module

CH\_C001:    If DA\_Q076[employer] = Yes    go to CH\_R001  
                  Otherwise                           if job type = 3, go to CH\_Q001;  
  if job type = 1 or 2, go to  
  CH\_Q005

Header:            Employer name, start date and end date

CH\_R001:    **You told us that [respondent] was absent from his job with [employer] for all of [reference year]. I would now like to ask you some questions about this absence.**

**You told us that [respondent] was absent from her job with [employer] for all of [reference year]. I would now like to ask you some questions about this absence.**

**You told us that you were absent from your job with [employer] for all of [reference year]. I would now like to ask you some questions about this absence.**

INTERVIEWER:    Press <Enter> to continue  
                                  If respondent denies being absent for all of [reference year], enter Don't know or Refuse

If response is <Enter>            go to CH\_Q345  
If response is Don't know  
or Refuse                           if more employers, go to CH\_C001;  
  if no more employers, go to  
  SE\_C001

CH\_Q001:    **I would like to ask you a few questions about [respondent's] work with [employer]. What kind of business, industry or service was this?** (e.g. federal government, canning industry, forestry services)

**I would like to ask you a few questions about your work with [employer]. What kind of business, industry or service was this?** (e.g. federal government, canning industry, forestry services)



Maximum: 50 bytes

go to CH\_Q015

CH\_Q005: **I would like to ask you some questions about [respondent's] work with [employer]. Is this still the correct employer name?**

**I would like to ask you some questions about your work with [employer]. Is this still the correct employer name?**

1. Yes
2. No
8. Refuse
9. Don't know

If Yes/Refuse/Don't know      If paid worker go to CH\_Q040;  
If self employed or working  
in a family business without  
pay, go to CH\_Q011

If No      go to CH\_Q010

CH\_Q010: **What is the employer name?**

If paid worker      go to CH\_Q040  
If self-employed or working in a  
family business without pay      go to CH\_Q011  
If Refuse/Don't know      go to CH\_E010

Maximum: 50 bytes

CH\_E010: **If you don't know the name, can you give me a brief description of the employer?** (e.g. restaurant, hospital, etc.)

If paid worker      go to CH\_Q040  
If self-employed or working in a  
family business without pay      go to CH\_Q011

CH\_Q011: **Is he still [class of worker]?**

**Is she still [class of worker]?**

**Are you still [class of worker]?**

1. Confirmed
2. Not confirmed

- 8. Refuse
- 9. Don't know

If confirmed and self employed, go to CH\_Q050;  
and not self employed, go to  
CH\_Q040  
If not confirmed go to CH\_N015  
If Refuse/Don't know go to CH\_E015

CH\_Q015: **In this job, was he . . .**

**In this job, was she . . .**

**In this job, were you . . .**

- 1. **A paid worker?**
- 2. **Self employed?**
- 3. **Working in a family business without pay?**
- 8. Refuse
- 9. Don't know

If Paid worker go to CH\_Q030  
If Self employed go to CH\_Q020  
If Working in a family business  
without pay go to CH\_Q050  
Refuse/Don't know go to CH\_E015

CH\_N015: INTERVIEWER: Select correct class of worker

- 1. **Paid worker**
- 2. **Self employed**
- 3. **Working in a family business without pay**
- 8. Refuse
- 9. Don't know

If Paid worker go to CH\_Q030  
If Self employed go to CH\_Q020  
If Working in a family business  
without pay go to CH\_Q050  
Refuse/Don't know go to CH\_E015

CH\_E015: INTERVIEWER: Class of worker is required for question flow. Go back to previous questions and enter the class of worker.

CH\_Q020: **Did he have an incorporated business?**

**Did she have an incorporated business?**

**Did you have an incorporated business?**

1. Yes
2. No
8. Refuse
9. Don't know

go to CH\_Q025

CH\_Q025: **Did he have any employees?**

**Did she have any employees?**

**Did you have any employees?**

- |               |               |
|---------------|---------------|
| 1. Yes        | go to CH_C040 |
| 2. No         | go to CH_C040 |
| 8. Refuse     | go to CH_Q050 |
| 9. Don't know | go to CH_Q050 |

CH\_Q030: **How did he get his job with [employer]?**

**How did she get her job with [employer]?**

**How did you get your job with [employer]?**

01. Contacted employer directly
02. Friend or relative
03. Searched the Internet
04. Placed or answered newspaper ad
05. Employment agency (including Canada Employment Centres)
06. Referral from another employer
07. Contacted directly by employer
08. Union
09. Required for Social Assistance/Welfare-Workfare
10. Other (specify)
98. Refuse
99. Don't know

If answered "Other"	go to CH_Q030S
Otherwise	go to CH_C035

CH\_Q030S: INTERVIEWER: Specify

Maximum: 80 bytes

go to CH\_C035

CH\_C035: If Compinfo.prlflg59 = 1 go to CH\_Q038 (new panel, joiners  
Jan. or May)  
If Compinfo.prlflg59 = 2 go to CH\_Q035 (previously  
interviewed respondent)

CH\_Q035: **When was he offered this job?**

**When was she offered this job?**

**When were you offered this job?**

Hard range: minimum: [reference year] minus ([age] minus 10)  
(10 years old)  
maximum: start date of job  
(DA\_Q045/\_Q050/\_Q055) or  
12/[reference year]

Soft range: minimum: 01/[reference year]  
maximum: 12/[reference year]

go to CH\_C040

Soft edit for CH\_Q035:

If respondent gives minimum date prior to January 1 of [reference  
year] the following message will pop up:

CH\_E035: **We are considering only jobs that started between January  
and December of [reference year]. Are you sure about the date  
you were offered this job?**

CH\_Q038: **When was he offered this job?**

**When was she offered this job?**

**When were you offered this job?**

Hard range: minimum: [reference year] minus ([age] minus 10)  
(10 years old)

maximum: start date of job  
(DA\_Q045/\_Q050/\_Q055) or  
12/[reference year]

go to CH\_C040

CH\_C040: If self employed go to CH\_Q050  
Otherwise go to CH\_Q040

CH\_Q040: **[Is/Was] his job permanent, or is there some way that it [is/was] not permanent?** (e.g. seasonal, temporary, term, casual, etc.)

**[Is/Was] her job permanent, or is there some way that it [is/was] not permanent?** (e.g. seasonal, temporary, term, casual, etc.)

**[Is/Was] your job permanent, or is there some way that it [is/was] not permanent?** (e.g. seasonal, temporary, term, casual, etc.)

If DA\_Q085 = No, use the words "Was" and "was" in the question text. Otherwise, use the words "Is" and "is" in the question text.

1. Permanent
2. Not permanent
8. Refuse
9. Don't know

If Permanent/Refuse/Don't know go to CH\_Q050  
If Not permanent go to CH\_Q045

CH\_Q045: **In what way is his job not permanent?**

**In what way is her job not permanent?**

**In what way is your job not permanent?**

1. **Seasonal job**
2. **Temporary, term or contract job (non-seasonal)**
3. **Casual job**
4. **Work done through a temporary help agency**
5. Other (specify)
8. Refuse
9. Don't know

If answered "Other"            go to CH\_Q045S  
Otherwise                        go to CH\_Q050

CH\_Q045S: INTERVIEWER:    Specify

Maximum: 80 bytes

go to CH\_Q050

CH\_Q050:    **How many persons were employed at the location where he worked for [employer]? Was it . . .**

**How many persons were employed at the location where she worked for [employer]? Was it . . .**

**How many persons were employed at the location where you worked for [employer]? Was it . . .**

1.    **Less than 20**
2.    **20 to 99**
3.    **100 to 499**
4.    **500 to 999**
5.    **1000 and over**
8.    Refuse
9.    Don't know

go to CH\_Q055

CH\_Q055:    **Did this employer operate at more than one location?**

1.    Yes
2.    No
8.    Refuse
9.    Don't know

Yes                                    if CH\_Q050 = 5 and job type = 1 or 2, go to CH\_Q065;  
if CH\_Q050 = 5 and job type = 3, go to CH\_Q080;  
otherwise, go to CH\_Q060

No/Refuse/Don't know            if job type = 1 or 2 go to CH\_Q065;  
if job type = 3 go to CH\_Q080

CH\_Q060: **About how many persons were employed at all these locations?  
Was it . . .**

INTERVIEWER: Probe for an estimate

1. **Less than 20**
2. **20 to 99**
3. **100 to 499**
4. **500 to 999**
5. **1000 and over**
8. Refuse
9. Don't know

If job type = 1 or 2 go to CH\_Q065

If job type = 3 go to CH\_Q080

Soft edit on CH\_Q060:

If CH\_Q060 < CH\_Q050 go to CH\_E060

CH\_E060: **You reported less people working at all locations than the  
location where you are working.**

CH\_Q065: **Our records show that in January [reference year], the kind of  
work he was doing was [type of work]. Is this correct?**

**Our records show that in January [reference year], the kind of  
work she was doing was [type of work]. Is this correct?**

**Our records show that in January [reference year], the kind of  
work you were doing was [type of work]. Is this correct?**

1. Yes go to CH\_Q090
2. No go to CH\_Q070
8. Refuse go to CH\_Q090
9. Don't know go to CH\_Q090

CH\_Q070: **What kind of work was he doing with [employer] in January  
[reference year]? (e.g. office clerk, factory worker, forestry  
technician)**

**What kind of work was she doing with [employer] in January  
[reference year]? (e.g. office clerk, factory worker, forestry  
technician)**

**What kind of work were you doing with [employer] in January [reference year]?** (e.g. office clerk, factory worker, forestry technician)

Maximum: 50 bytes

go to CH\_Q075

CH\_Q075: **What were his most important activities or duties in January [reference year]?** (e.g. filing documents, drying vegetables, forest examiner)

**What were her most important activities or duties in January [reference year]?** (e.g. filing documents, drying vegetables, forest examiner)

**What were your most important activities or duties in January [reference year]?** (e.g. filing documents, drying vegetables, forest examiner)

Maximum: 50 bytes

Go to CH\_Q090

CH\_Q080: **What kind of work was he doing with [employer]?** (e.g. office clerk, factory worker, forestry technician)

**What kind of work was she doing with [employer]?** (e.g. office clerk, factory worker, forestry technician)

**What kind of work were you doing with [employer]?** (e.g. office clerk, factory worker, forestry technician)

Maximum: 50 bytes

go to CH\_Q085

CH\_Q085: **What were his most important activities or duties?** (e.g. filing documents, drying vegetables, forest examiner)

**What were her most important activities or duties?** (e.g. filing documents, drying vegetables, forest examiner)

**What were your most important activities or duties?** (e.g. filing documents, drying vegetables, forest examine)



Maximum: 50 bytes

go to CH\_Q102

Header for CH\_Q090, \_Q095, Q\_100 and Q\_102: type of work

CH\_Q090: **Did the kind of work he was doing with [employer] change during [reference year]?**

**Did the kind of work she was doing with [employer] change during [reference year]?**

**Did the kind of work you were doing with [employer] change during [reference year]?**

- |    |            |               |
|----|------------|---------------|
| 1. | Yes        | go to CH_Q095 |
| 2. | No         | go to CH_Q102 |
| 8. | Refuse     | go to CH_Q102 |
| 9. | Don't know | go to CH_Q102 |

CH\_Q095: **What kind of work was he doing [when this job ended] [at the end of reference year]?** (e.g. office clerk, factory worker, forestry technician)

**What kind of work was she doing [when this job ended] [at the end of reference year]?** (e.g. office clerk, factory worker, forestry technician)

**What kind of work were you doing [when this job ended] [at the end of reference year]?** (e.g. office clerk, factory worker, forestry technician)

Maximum: 50 bytes

go to CH\_Q100

CH\_Q100: **What were his most important activities or duties [when this job ended] [at the end of reference year]?** (e.g. filing documents, drying vegetables, forest examiner)

**What were her most important activities or duties [when this job ended] [at the end of reference year]?** (e.g. filing documents, drying vegetables, forest examiner)

**What were your most important activities or duties [when this job ended] [at the end of reference year]? (e.g. filing documents, drying vegetables, forest examiner)**

Maximum: 50 bytes

go to CH\_Q102

CH\_Q102: **How closely was this job related to [his] education?**

**How closely was this job related to [her] education?**

**How closely was this job related to [your] education?**

1. **Closely related**
2. **Somewhat related**
3. **Not related at all**
8. Refuse
9. Don't know

go to CH\_Q105

Header: employer name, start date and end date

CH\_Q105: **In the past year at this job, as part of his duties, did he supervise the work of other employees on a day-to-day basis?**

**In the past year at this job, as part of her duties, did she supervise the work of other employees on a day-to-day basis?**

**In the past year at this job, as part of your duties, did you supervise the work of other employees on a day-to-day basis?**

1. Yes
2. No
8. Refuse
9. Don't know

If Yes go to CH\_Q110

If No/Refuse/Don't know  
and paid worker go to CH\_Q125

Otherwise go to CH\_Q150

CH\_Q110: **About how many people did he supervise directly?**

**About how many people did she supervise directly?**

**About how many people did you supervise directly?**

INTERVIEWER: Probe for an estimate

Hard range: minimum: 1  
maximum: 995

Soft range: > 60

go to CH\_Q115

CH\_Q115: **Did he have an influence on whether a person he supervised received a pay raise or promotion?**

**Did she have an influence on whether a person she supervised received a pay raise or promotion?**

**Did you have an influence on whether a person you supervised received a pay raise or promotion?**

1. Yes
2. No
8. Refuse
9. Don't know

go to CH\_Q120

CH\_Q120: **Was he directly responsible for deciding the work to be done by the people he supervised?**

**Was she directly responsible for deciding the work to be done by the people she supervised?**

**Were you directly responsible for deciding the work to be done by the people you supervised?**

1. Yes
2. No
8. Refuse
9. Don't know

If paid worker go to CH\_Q125  
Otherwise go to CH\_Q150

CH\_Q125: **In the past year at this job, did he make decisions about budgets or staffing?**

**In the past year at this job, did she make decisions about budgets or staffing?**

**In the past year at this job, did you make decisions about budgets or staffing?**

1. Yes
2. No
8. Refuse
9. Don't know

go to CH\_Q130

CH\_Q130: **Was his work with [employer] managerial?**

**Was her work with [employer] managerial?**

**Was your work with [employer] managerial?**

1. Yes
2. No
8. Refuse
9. Don't know

If Yes

go to CH\_Q135

If No/Refuse/Don't know

go to CH\_Q140

CH\_Q135: **Would his work be best described as top, upper, middle or lower management?**

**Would her work be best described as top, upper, middle or lower management?**

**Would your work be best described as top, upper, middle or lower management?**

1. Top management
2. Upper management
3. Middle management
4. Lower management
8. Refuse
9. Don't know

go to CH\_Q140

CH\_Q140: **Which of the following best describes his work schedule with [employer] [when this job ended] [at the end of reference year]?**

**Which of the following best describes her work schedule with [employer] [when this job ended] [at the end of reference year]?**

**Which of the following best describes your work schedule with [employer] [when this job ended] [at the end of reference year]?**

- |     |   |                |
|-----|---|----------------|
| 01. | <b>A regular daytime schedule</b>                                 | go to CH_Q150  |
| 02. | <b>A regular evening shift</b>                                    | go to CH_Q150  |
| 03. | <b>A regular night or graveyard shift</b>                         | go to CH_Q150  |
| 04. | <b>A rotating shift (changes from days to evenings to nights)</b> | go to CH_Q150  |
| 05. | <b>A split shift (two distinct periods each day)</b>              | go to CH_Q150  |
| 06. | <b>On call</b>  | go to CH_Q145  |
| 07. | <b>An irregular schedule</b>                                      | go to CH_Q145  |
| 08. | Other (specify)   | go to CH_Q140S |
| 98. | Refuse  | go to CH_Q150  |
| 99. | Don't know  | go to CH_Q150  |

CH\_Q140S: INTERVIEWER: Specify

Maximum: 80 bytes

go to CH\_Q150

CH\_Q145: **What was the main reason that he worked this schedule?**

**What was the main reason that she worked this schedule?**

**What was the main reason that you worked this schedule?**

01. Own illness or disability
02. Caring for own children
03. Caring for elder relatives(s)
04. Other personal or family responsibilities
05. Going to school
06. Could only find this type of work
07. Did not want a regular schedule
08. Requirement of the job/no choice
09. Earn more money

- 10. Other (specify)
- 98. Refuse
- 99. Don't know

If answered "Other" go to CH\_Q145S  
Otherwise go to CH\_Q150

CH\_Q145S: INTERVIEWER: Specify

Maximum: 80 bytes

go to CH\_Q150

CH\_Q150: **At this job, did he usually work every week of the month?**

**At this job, did she usually work every week of the month?**

**At this job, did you usually work every week of the month?**

- 1. Yes
- 2. No
- 8. Refuse
- 9. Don't know

If Yes/Refuse/Don't know If paid worker, go to  
CH\_Q160;  
If self employed or working in  
a family business without pay,  
go to CH\_Q165

If No go to CH\_Q155

CH\_Q155: **At this job, how many weeks did he usually work each month?**

**At this job, how many weeks did she usually work each month?**

**At this job, how many weeks did you usually work each month?**

Hard range: minimum: 1  
maximum: 3

If paid worker go to CH\_Q160  
If self employed or working in  
a family business without pay go to CH\_Q165

CH\_Q160: **At this job, how many hours per week did he usually get paid?**

**At this job, how many hours per week did she usually get paid?**

**At this job, how many hours per week did you usually get paid?**

INTERVIEWER: If the hours/week vary, ask for the average over the last 4 weeks worked

Hard range: minimum: 1.00  
maximum: 168.00

Soft range: < 5 and > 60

If total is < than 30 hours go to CH\_Q170

If total is \$ than 30 hours/Refuse/Don't know go to CH\_Q175

CH\_Q165: **At this job, how many hours per week did he usually work?**

**At this job, how many hours per week did she usually work?**

**At this job, how many hours per week did you usually work?**

INTERVIEWER: If the hours/week vary, ask for the average over the last 4 weeks worked

Hard range: minimum: 1.00  
maximum: 168.00

Soft range: < 5 and > 60

If total is < than 30 hours go to CH\_Q169

If total is > than 29 hours/Refuse/Don't know go to CH\_Q175

CH\_Q169: **Did he want to work 30 or more hours per week at this job?**

**Did she want to work 30 or more hours per week at this job?**

**Did you want to work 30 or more hours per week at this job?**

1. Yes
2. No
8. Refuse
9. Don't know

go to CH\_Q170

CH\_Q170: **At this job, what was the main reason he usually worked less than 30 hours per week?**

**At this job, what was the main reason she usually worked less than 30 hours per week?**

**At this job, what was the main reason you usually worked less than 30 hours per week?**

01. Own illness or disability
02. Caring for own children
03. Caring for elder relative(s)
04. Other personal or family responsibilities
05. Going to school
06. Could not find work with 30 or more hours
07. Personal preference
08. Full-time work under 30 hours per week (nature of the job)
09. Business conditions
10. Semi-retired or pre-retired
11. Other (specify)
98. Refuse
99. Don't know

If answered "Other"                      go to CH\_Q170S  
Otherwise                                      go to CH\_Q175

CH\_Q170S: INTERVIEWER:    Specify

Maximum: 80 bytes

go to CH\_Q175

CH\_Q175: **At this job, did he regularly work any of his scheduled hours at home?**

**At this job, did she regularly work any of her scheduled hours at home?**

**At this job, did you regularly work any of your scheduled hours at home?**

1. Yes
2. No
8. Refuse
9. Don't know



Yes go to CH\_Q180

No If self employed or working in a family business without pay, go to CH\_Q210;  
If a paid worker and CH\_Q140 = On call, go to CH\_Q210;  
If a paid worker and CH\_Q140 = Irregular schedule, go to CH\_Q251;  
Otherwise, go to CH\_Q185

Refuse/Don't know go to CH\_Q185

CH\_Q180: **How many hours per week did he usually work at home?**

**How many hours per week did she usually work at home?**

**How many hours per week did you usually work at home?**

Hard range: minimum: 1.00  
maximum: 168.00

Soft range: > 60

If self employed or working in a family business without pay go to CH\_Q210  
If a paid worker and CH\_Q140 = On call go to CH\_Q210  
If a paid worker and CH\_Q140 = Irregular schedule go to CH\_Q251  
Refuse/Don't know go to CH\_Q185  
Otherwise go to CH\_Q185

CH\_Q185: **Did the number of hours usually worked per week for this employer change in [reference year]?**

1. Yes
2. No
8. Refuse
9. Don't know

If Yes go to CH\_Q190  
Otherwise go to CH\_Q251

CH\_Q190: **In what month was this?**

INTERVIEWER: If the number of hours changed more than once, select month of last change.

If months not equal to dates worked          go to CH\_E190  
Otherwise    go to CH\_Q195

CH\_E190: Check dates. Month in which hours changed is not within start and end dates of job.

CH\_Q195: **Before this change, did he usually work every week of the month?**

**Before this change, did she usually work every week of the month?**

**Before this change, did you usually work every week of the month?**

1. Yes
2. No
8. Refuse
9. Don't know

If Yes    go to CH\_Q205  
Otherwise    go to CH\_Q200

CH\_Q200: **How many weeks did he usually work per month?** (before this change)

**How many weeks did she usually work per month?** (before this change)

**How many weeks did you usually work per month?** (before this change)

INTERVIEWER: Probe for an estimate

Hard range: minimum: 1  
                  maximum: 3

go to CH\_Q205

CH\_Q205: **How many hours per week did he usually get paid?** (before this change)

**How many hours per week did she usually get paid?** (before this change)

**How many hours per week did you usually get paid? (before this change)**

INTERVIEWER: Probe for an estimate

Hard range: minimum: 1.00  
maximum: 168.00

Soft range: < 5 and > 60

go to CH\_Q251

CH\_Q210: **Last year, when did he work for [employer]?**

**Last year, when did she work for [employer]?**

**Last year, when did you work for [employer]?**

1. **All months of the year**

Edit on all months of the year:

To select this answer, respondent must have worked from 01/01/[reference year] to 31/12/[reference year]; otherwise go to CH\_E210

If paid worker and not the same employer as last year (CH\_Q005 = No) go to CH\_Q251

If paid worker and same employer as last year (CH\_Q005 = Yes) and if Compinfo.oldwge69 and Compinfo.oldwgu69 > 0 go to CH\_C240

If paid worker and same employer as last year (CH\_Q005 = Yes) and Compinfo.oldwge69 = \$0.00 and Compinfo.oldwgu69 = 0 go to CH\_Q245

Otherwise if more employers, go to CH\_C001;  
if no more employers, go to SE\_C001

2. **Some of the months** go to CH\_Q215

3. **None of the months** if more employers, go to CH\_C001;  
if no more employers, go to SE\_C001

8./9. Refuse/Don't know

If paid worker and not the same employer as last year  
(CH\_Q005 = No), go to CH\_Q251

If paid worker and same employer as last year (CH\_Q005 =  
Yes) and if Compinfo.oldwge69 and Compinfo.oldwgu69  
> 0, go to CH\_C240

If paid worker and same employer as last year (CH\_Q005 =  
Yes) and Compinfo.oldwge69 = \$0.00 and  
Compinfo.oldwgu69 = 0, go to CH\_Q245

Otherwise            if more employers, go to CH\_C001;  
                          if no more employers, go to SE\_C001

CH\_E210:    Dates worked for this employer are [start date] and [end date],  
                  therefore you cannot select 'All months of the year'.

CH\_Q215:    **In which months did you work for [employer]?**

INTERVIEWER:    Select all months that apply

- |                 |                  |
|-----------------|------------------|
| 01.    January  | 07.    July      |
| 02.    February | 08.    August    |
| 03.    March    | 09.    September |
| 04.    April    | 10.    October   |
| 05.    May      | 11.    November  |
| 06.    June     | 12.    December  |

If paid worker and not the same employer  
as last year (CH\_Q005 = No)                            go to CH\_Q251

If paid worker and a new employer  
reported    go to CH\_Q251

If paid worker and same employer  
as last year (CH\_Q005 = Yes)                            go to CH\_Q254

Otherwise                            if more employers, go to CH\_C001;  
  if no more employers, go to  
  SE\_C001

Edit:    Must be within dates worked for this employer;  
          If dates inconsistent with job dates go to CH\_E215

CH\_E215: Check dates. Months specified are not within start and end dates of job.

CH\_C240: If PersonProxy = Proxy go to CH\_Q251  
If PersonProxy = NonProxy go to CH\_Q240

CH\_Q240: **Based on our interview of a year ago, your wage at this job in [reference year – 1] was \$ [prefill from Compinfo.oldwge69 and Compinfo.oldwgu69]. Is this correct?**

1. Yes go to CH\_Q248
2. No go to CH\_Q245
8. Refuse go to CH\_Q255
9. Don't know go to CH\_Q255

CH\_Q245: **What was his wage at this job at the beginning of [reference year]? This includes tips and commissions but not paid overtime.**

**What was her wage at this job at the beginning of [reference year]? This includes tips and commissions but not paid overtime.**

**What was your wage at this job at the beginning of [reference year]? This includes tips and commissions but not paid overtime.**

INTERVIEWER: If wage is greater than \$999,995.00, enter 999,995.00

Hard range: minimum: \$ 0.01  
maximum: \$ 999,995.00

Soft range: > \$99,995

Refuse/Don't know go to CH\_Q248  
Otherwise go to CH\_Q246

CH\_Q246: **Is this wage . . .**

01. **Hourly?**
02. **Daily?**
03. **Weekly?**
04. **Bi-weekly?**
05. **Semi-monthly?**

- 06. **Monthly?**
- 07. **Yearly?**
- 08. Other (specify)

Refuse/Don't know                      not permitted for this question

If answered "Other"                      go to CH\_Q246S  
 Otherwise                                      go to CH\_Q248

CH\_Q246S: INTERVIEWER:      Specify

Maximum: 80 bytes

go to CH\_Q255

CH\_Q248: **Did his wage at this job change during [reference year]?**

**Did her wage at this job change during [reference year]?**

**Did your wage at this job change during [reference year]?**

- 1. Yes
- 2. No
- 8. Refuse
- 9. Don't know

If Yes    go to CH\_Q249  
 If No and compinfo.oldwgu69 = 02 "daily"      go to CH\_Q255  
 Otherwise    go to CH\_Q260

CH\_Q249: **In which month did this wage change occur?**

INTERVIEWER:      Select month. If more than one wage  
 change, select month of last change.

- |              |                |
|--------------|----------------|
| 01. January  | 08. August     |
| 02. February | 09. September  |
| 03. March    | 10. October    |
| 04. April    | 11. November   |
| 05. May      | 12. December   |
| 06. June     | 98. Refuse     |
| 07. July     | 99. Don't know |

go to CH\_Q251

CH\_Q251: **What is the easiest way for you to tell us his [new] wage or salary at this job? Would it be:**

**What is the easiest way for you to tell us her [new] wage or salary at this job? Would it be:**

**What is the easiest way for you to tell us your [new] wage or salary at this job? Would it be:**

01. **Hourly ?**
02. **Daily ?**
03. **Weekly ?**
04. **Bi-weekly ?**
05. **Semi-monthly ?**
06. **Monthly ?**
07. **Yearly ?**
08. **Other (specify)**

If CH\_Q248 = Yes, prefill the question text with “new”

Refuse/Don't know                      not permitted for this question

If answered "Other"                      go to CH\_Q251S  
Otherwise                                      go to CH\_Q252

CH\_Q251S: INTERVIEWER:      Specify

Maximum: 80 bytes

go to CH\_Q255

CH\_Q252: **What was his [prefill of answer from CH\_Q251] wage or salary, before taxes and deductions, [when this job ended] [at the end of reference year]? This includes tips and commissions but not paid overtime.**

**What was her [prefill of answer from CH\_Q251] wage or salary, before taxes and deductions, [when this job ended] [at the end of reference year]? This includes tips and commissions but not paid overtime.**

**What was your [prefill of answer from CH\_Q251] wage or salary, before taxes and deductions, [when this job ended] [at the end of reference year]? This includes tips and commissions but not paid overtime.**

INTERVIEWER: If wage or salary is greater than  
\$999,995.00, enter \$999,995.00

Hard range: minimum: \$ 0.01  
maximum: \$ 999995.00

If CH\_Q251 = Hourly and < \$5 go to CH\_E252  
If CH\_Q251 = Hourly and > \$500 go to CH\_E252  
If CH\_Q251 = Daily and > \$4,000 go to CH\_E252  
If CH\_Q251 = Weekly and > \$20,000 go to CH\_E252  
If CH\_Q251 = Bi-weekly and > \$40,000 go to CH\_E252  
If CH\_Q251 = Semi-monthly and > \$40,000 go to CH\_E252  
If CH\_Q251 = Monthly and > \$50,000 go to CH\_E252  
If CH\_Q251 = Yearly and > \$600,000 go to CH\_E252

Refuse/Don't know go to CH\_Q260

Otherwise go to CH\_Q254

CH\_E252: **So his [prefill of answer from CH\_Q251] wage or salary,  
before taxes and deductions, was [prefill of answer from  
CH\_Q252]. Is that correct?**

**So her [prefill of answer from CH\_Q251] wage or salary,  
before taxes and deductions, was [prefill of answer from  
CH\_Q252]. Is that correct?**

**So your [prefill of answer from CH\_Q251] wage or salary,  
before taxes and deductions, was [prefill of answer from  
CH\_Q252]. Is that correct?**

If No, return to CH\_Q251 or CH\_Q252 and change response  
If Yes, go to CH\_Q254

CH\_Q254: **Does he usually receive tips and commissions?**

**Does she usually receive tips and commissions?**

**Do you usually receive tips and commissions?**

1. Yes
2. No
8. Refuse
9. Don't know





CH\_Q270: **I would now like to ask you about job benefits that some employers offer. In his job with [employer], did he have an employer pension plan?**

**I would now like to ask you about job benefits that some employers offer. In her job with [employer], did she have an employer pension plan?**

**I would now like to ask you about job benefits that some employers offer. In your job with [employer], did you have an employer pension plan?**

INTERVIEWER: Also called a Registered Pension Plan. Exclude CPP or QPP (Canada/Quebec Pension Plan).

1. Yes
2. No
8. Refuse
9. Don't know

If Yes go to CH\_Q271  
Otherwise go to CH\_Q272

CH\_Q271: **Did he contribute to this pension plan, for example, through pay deductions?**

**Did she contribute to this pension plan, for example, through pay deductions?**

**Did you contribute to this pension plan, for example, through pay deductions?**

1. Yes
2. No
8. Refuse
9. Don't know

go to CH\_Q272

CH\_Q272: **In this job, did he contribute, through payroll deductions, to a registered retirement savings plan, also called a group RRSP?**

**In this job, did she contribute, through payroll deductions, to a registered retirement savings plan, also called a group RRSP?**

**In this job, did you contribute, through payroll deductions, to a registered retirement savings plan, also called a group RRSP?**

1. Yes
2. No
8. Refuse
9. Don't know

If Yes                                      go to CH\_Q273  
Otherwise                                  go to CH\_Q275

CH\_Q273: **Did his employer contribute to this group RRSP?**

**Did her employer contribute to this group RRSP?**

**Did your employer contribute to this group RRSP?**

1. Yes
2. No
8. Refuse
9. Don't know

go to CH\_Q275

CH\_Q275: **In this job, did his employer offer him any of the following benefits even if he chose not to take them?**

**In this job, did her employer offer her any of the following benefits even if she chose not to take them?**

**In this job, did your employer offer you any of the following benefits even if you chose not to take them?**

INTERVIEWER:      Mark all that apply

1. **Medical insurance or health plan in addition to public health insurance coverage**
2. **Dental plan or dental coverage with the health plan**
3. **Life and/or disability insurance plan**
4. None of the above
8. Refuse
9. Don't know

go to CH\_Q277

CH\_Q277: **Did his employer give him the option of a:**

**Did her employer give her the option of a:**

**Did your employer give you the option of a:**

INTERVIEWER: Mark all that apply

1. **Low-interest loan**
2. **Profit sharing plan**
3. **Stock purchase or Stock option plan**
4. None of the above
8. Refuse
9. Don't know

go to CH\_Q279

CH\_Q279: **In this job, were there other important benefits available to him as an employee?**

**In this job, were there other important benefits available to her as an employee?**

**In this job, were there other important benefits available to you as an employee?**

1. Yes (specify)
2. No
8. Refuse
9. Don't know

If answered "Yes" go to CH\_Q279S  
Otherwise go to CH\_C280

CH\_Q279S: INTERVIEWER: Specify

Maximum: 80 bytes  
go to CH\_C280

### **Absences**

CH\_C280: If job type = 1 or 3 go to CH\_Q280  
If job type = 2 go to CH\_Q285  
On call workers: if more employers, go to CH\_C001;  
if no more employers, go to SE\_C001

CH\_Q280: **Not counting fully paid vacation, was he absent from this job for a period of one week or longer, during [refyear]?**

**Not counting fully paid vacation, was she absent from this job for a period of one week or longer, during [refyear]?**

**Not counting fully paid vacation, were you absent from this job for a period of one week or longer, during [refyear]?**

INTERVIEWER: An absence is a period of at least seven consecutive days during which the respondent was away from the job, but expected to return to the job. Examples of absences are: temporary lay-offs (seasonal or economic), strikes, maternity or paternity leave, paid or unpaid sick leave and unpaid educational leave.

1. Yes
2. No
8. Refuse
9. Don't know

If yes                              go to CH\_Q320  
Otherwise                          if more employers, go to CH\_C001;  
    if no more employers go to SE\_C001

CH\_Q285: **Before returning to work for [employer] did he receive any pay from this employer?**

**Before returning to work for [employer] did she receive any pay from this employer?**

**Before returning to work for [employer] did you receive any pay from this employer?**

1. Yes
2. No
8. Refuse
9. Don't know

If Yes                                  go to CH\_Q290  
Otherwise                              go to CH\_C290

CH\_Q290: **Was that full or partial pay?**

1. Full pay

- 2. Partial pay
- 8. Refuse
- 9. Don't know

go to CH\_C290

CH\_C290: If Compinfo.absrsn69 = 09  
 (reason for absence is seasonal layoff) go to CH\_Q295  
 Otherwise go to CH\_Q305

CH\_Q295: **In [reference year], did he look for another job before returning to work?**

**In [reference year], did she look for another job before returning to work?**

**In [reference year], did you look for another job before returning to work?**

- 1. Yes
- 2. No
- 8. Refuse
- 9. Don't know

If Yes go to CH\_Q300  
 Otherwise go to CH\_Q305

CH\_Q300: **In which months did he look for another job?**

**In which months did she look for another job?**

**In which months did you look for another job?**

INTERVIEWER: Mark all that apply.

- |              |               |
|--------------|---------------|
| 01. January  | 07. July      |
| 02. February | 08. August    |
| 03. March    | 09. September |
| 04. April    | 10. October   |
| 05. May      | 11. November  |
| 06. June     | 12. December  |

Edit: Months should be within start date of job and return date in DA\_Q075;  
 If not go to CH\_E300  
 Otherwise go to CH\_Q305

CH\_E300: Check dates. Months in CH\_Q300 should be before date returned to work in DA\_Q075

Start: date of absence

End: date of absence

CH\_Q305: **After returning to work for [employer], was he absent from this job for a period of one week or longer, not counting fully paid vacations?**

**After returning to work for [employer], was she absent from this job for a period of one week or longer, not counting fully paid vacations?**

**After returning to work for [employer], were you absent from this job for a period of one week or longer, not counting fully paid vacations?**

1. Yes
2. No
8. Refuse
9. Don't know

If Yes go to CH\_Q310

If No/Refuse/Don't know and more employers go to CH\_C001

If no more employers go to SE\_C001

CH\_Q310: **How many times was he absent after returning to work on [return date from DA\_Q075]?**

**How many times was she absent after returning to work on [return date from DA\_Q075]?**

**How many times were you absent after returning to work on [return date from DA\_Q075]?**

Hard range: minimum: 1  
maximum: 52

Soft range: = 1 and > 20

If only once make [last] = blank then go to CH\_Q375

If more than once make [last] = last then go to CH\_Q375

Refuse/Don't know go to CH\_Q315

CH\_Q315: **Would you say it was more than once?**

- |    |            |                     |
|----|------------|---------------------|
| 1. | Yes        | make [last] = last  |
| 2. | No         | make [last] = blank |
| 8. | Refuse     |                     |
| 9. | Don't know |                     |

If Yes/No go to CH\_Q375

If Refuse/Don't know and  
more employers go to CH\_C001

If no more employers go to SE\_C001

CH\_Q320: **How many times was he absent?**

**How many times was she absent?**

**How many times were you absent?**

Hard range: minimum: 1  
maximum: 52

Soft range: > 20

If only once, make [first] = a blank go to CH\_Q330

Otherwise [first] = first and [last] = last go to CH\_Q330

If Refuse and more employers go to CH\_C001

If Refuse and no more employers go to SE\_C001

If Don't know go to CH\_Q325

CH\_Q325: **Would you say it was more than once?**

- |    |            |                                     |
|----|------------|-------------------------------------|
| 1. | Yes        | make [first] = first, [last] = last |
| 2. | No         | make [first] = blank                |
| 8. | Refuse     |                                     |
| 9. | Don't know |                                     |

If Yes/No go to CH\_Q330

If Refuse/Don't know  
and more employers, go to  
CH\_C001;  
and no more employers, go to  
SE\_C001

CH\_Q330: **When did his [first] absence begin?**



**When did her [first] absence begin?**

**When did your [first] absence begin?**

INTERVIEWER: If date absence started is before January 1, [refyear], enter 01/01/[refyear].

Hard range: must be within dates worked for this employer

Interviewer enters day/month/ year go to CH\_Q335

Refuse/Don't know go to CH\_Q335

If a year < refyear is entered the following hard edit will pop: "If date absence started is before January 1, [refyear], enter 01/01/[refyear]."

If a year > refyear is entered the following hard edit will pop: "Date absence started must be within dates worked for this employer in [refyear]."

CH\_Q335: **When did this absence end?**

INTERVIEWER: If date absence ended is after December 31, [refyear], enter 31/12/[refyear].

Hard range: minimum: [date from CH\_Q330]  
maximum: end date of job or  
31/12/[reference year] if job not ended

Interviewer enters day/month/year

If a year > refyear is entered the following hard edit will pop: "If date absence ended is after December 31, [refyear], enter 31/12/[refyear]." (Note: Edit will not pop if DK/R is entered in day or month so date will be cleaned up in processing.)

If a year < refyear is entered the following hard edit will pop: "Date absence ended must be within dates worked for this employer in [refyear]."

If start date from CH\_Q330 or end date from CH\_Q335 are Refuse/Don't know go to CH\_Q340  
Otherwise go to CH\_Q345

Edit: CH\_Q335 > CH\_Q330; if not go to CH\_E335  
CH\_Q335 < DA\_Q090; if not go to CH\_E336  
CH\_Q335 - CH\_Q330 > 4; if not go to CH\_E337

CH\_E335: Interviewer, check dates. Date absence ended in CH\_Q335 should be later than date absence began [date in CH\_Q330].

CH\_E336: Interviewer, check dates. Date absence ended in CH\_Q335 should be before date job ended [date in DA\_Q090].

CH\_E337: Check dates. Absence spell should be at least 5 working days.

CH\_Q340: **About how many weeks would you say this absence lasted?**

Interviewer enters estimate

Hard range: minimum: 1  
maximum: 52

go to CH\_Q345

CH\_Q345: **What was the main reason for this absence?**

01. Own illness or disability
02. Maternity leave (females only)
03. Paternity leave (males only)
04. Caring for own children
05. Caring for elder relative(s)
06. Other personal or family responsibilities
07. School or educational leave
08. Labour dispute (strike or lockout)
09. Seasonal layoff
10. Temporary layoff due to business conditions
11. Unpaid or partially paid vacation
12. Other (specify)
98. Refuse
99. Don't know

If answered "Own illness or disability" go to CH\_Q350  
If answered "Other" go to CH\_Q345S  
Otherwise go to CH\_Q355

CH\_Q345S: INTERVIEWER: Specify

Maximum: 80 bytes

go to CH\_Q355

CH\_Q350: **Was this due to a work related illness or injury?**

1. Yes
2. No
8. Refuse
9. Don't know

If DA\_Q076 = Yes                      go to CH\_Q357  
Otherwise                                  go to CH\_Q355

CH\_Q355: **Did he receive any pay from [employer] for this absence?**

**Did she receive any pay from [employer] for this absence?**

**Did you receive any pay from [employer] for this absence?**

1. Yes
2. No
8. Refuse
9. Don't know

If Yes    go to CH\_Q360

If No/Refuse/Don't know                      if CH\_Q345 = 09 (seasonal  
layoff) go to CH\_Q365;  
if more than one absence, go  
to CH\_Q375;  
if one absence and more  
employers, go to CH\_C001;  
if no more employers, go to  
SE\_C001

CH\_Q357: **Did he receive any pay from [employer] for this absence during [reference year]?**

**Did she receive any pay from [employer] for this absence during [reference year]?**

**Did you receive any pay from [employer] for this absence during [reference year]?**

1. Yes
2. No
8. Refuse
9. Don't know

If Yes                      go to CH\_Q360  
Otherwise                  go to CH\_Q365

CH\_Q360:    **Was that full or partial pay?**

1.     Full pay
2.     Partial pay
8.     Refuse
9.     Don't know

If CH\_Q345 = 09 (seasonal layoff)                  go to CH\_Q365  
If more than one absence                              go to CH\_Q375  
If one absence and more employers                go to CH\_C001  
If no more employers                                  go to SE\_C001

CH\_Q365:    **Did he look for another job during this absence?**

**Did she look for another job during this absence?**

**Did you look for another job during this absence?**

1.     Yes
2.     No
8.     Refuse
9.     Don't know

If Yes, and    absence start and end dates  
complete, go to CH\_Q370;  
absence start and end dates  
not complete and more  
employers go to CH\_C001;  
no more employers go to  
SE\_C001

If No/Refuse/Don't know, and                    more than one absence go to  
CH\_Q375;  
one absence and more  
employers go to CH\_C001;  
no more employers go to  
SE\_C001

CH\_Q370:    **In which months did he look for another job?**

**In which months did she look for another job?**

**In which months did you look for another job?**

INTERVIEWER: Mark all that apply. Months marked should be within dates shown below.

- |              |               |
|--------------|---------------|
| 01. January  | 07. July      |
| 02. February | 08. August    |
| 03. March    | 09. September |
| 04. April    | 10. October   |
| 05. May      | 11. November  |
| 06. June     | 12. December  |

If dates inconsistent with dates of absence go to CH\_E370  
If more than one absence go to CH\_Q375  
If one absence and more employers go to CH\_C001  
If no more employers go to SE\_C001

Edit: Months in CH\_Q370 must be within months in CH\_Q330 and CH\_Q335;  
If not go to CH\_E370

CH\_E370: Check dates. Months looked for work in CH\_Q370 should be within dates of absence. Go back to CH\_Q330, CH\_Q335 or CH\_Q370 to correct.

Start: date of absence      End: date of absence

CH\_Q375: **When did his [last] absence from this job in [reference year] begin?**

**When did her [last] absence from this job in [reference year] begin?**

**When did your [last] absence from this job in [reference year] begin?**

Interviewer enters day/month/year

Hard range:    minimum:    if job type = 2 then date must be > date returned to work (DA\_Q075);  
if job type = 1 or 3 then the date must >= date in CH\_Q335  
maximum:    end date of job from employer roster or 31/12/[reference year]

go to CH\_Q380

CH\_Q380: **When did this absence end?**

INTERVIEWER: If absence continued into [current year]  
enter 31/12/[reference year]

Hard range: minimum: start date of last absence  
maximum: end date of job or 31/12/[reference  
year] if job not ended

Interviewer enters day/month/ year

If a year > refyear is entered the following hard edit will pop: "If  
absence continued into [current year] enter 31/12/[reference year]."

If start or end date is Refuse/Don't know go to CH\_Q385  
Otherwise go to CH\_Q390

Edit: CH\_Q380 – CH\_Q375 > 4; if not, go to CH\_E380

CH\_E380: Check dates. Absence spell should be at least 5 working days.

CH\_Q385: **About how many weeks would you say this absence lasted?**

Hard range: minimum: 1  
maximum: 52

Interviewer enters estimate

Refuse/Don't know

go to CH\_Q390

CH\_Q390: **What was the main reason for this [last] absence?**

01. Own illness or disability
02. Maternity leave (females only)
03. Paternity leave (males only)
04. Caring for own children
05. Caring for elder relative(s)
06. Other personal or family responsibilities
07. School or educational leave
08. Labour dispute (strike or lockout)
09. Seasonal layoff
10. Temporary layoff due to business conditions
11. Unpaid or partially paid vacation
12. Other (specify)

- 98. Refuse
- 99. Don't know

If answered "Own illness or disability" go to CH\_Q395  
If answered "Other" go to CH\_Q390S  
Otherwise go to CH\_Q400

CH\_Q390S: INTERVIEWER: Specify

Maximum: 80 bytes

go to CH\_Q400

CH\_Q395: **Was this due to a work related illness or injury?**

- 1. Yes
- 2. No
- 8. Refuse
- 9. Don't know

go to CH\_Q400

CH\_Q400: **Did he receive any pay from [employer] for this absence?**

**Did she receive any pay from [employer] for this absence?**

**Did you receive any pay from [employer] for this absence?**

- 1. Yes
- 2. No
- 8. Refuse
- 9. Don't know

If Yes go to CH\_Q405

If No and CH\_Q390 = 09, go to CH\_Q410

Otherwise if more employers, go to CH\_C001;  
if no more employers, go to SE\_C001

CH\_Q405: **Was that full or partial pay?**

- 1. Full pay
- 2. Partial pay
- 8. Refuse

9. Don't know

If CH\_Q390 = 09 go to CH\_Q410

Otherwise if more employers, go to CH\_C001;  
if no more employers, go to SE\_C001

CH\_Q410: **Did he look for another job during this absence?**

**Did she look for another job during this absence?**

**Did you look for another job during this absence?**

- 1. Yes
- 2. No
- 8. Refuse
- 9. Don't know

If Yes if absence start and end dates complete, go to CH\_Q415;  
if not complete and more employers, go to CH\_C001;  
if not complete and no more employers, go to SE\_C001

If No/Refuse/Don't know if more employers, go to CH\_C001;  
if no more employers, go to SE\_C001

CH\_Q415: **In which months did he look for another job?**

**In which months did she look for another job?**

**In which months did you look for another job?**

INTERVIEWER: Mark all that apply.

- |              |               |
|--------------|---------------|
| 01. January  | 07. July      |
| 02. February | 08. August    |
| 03. March    | 09. September |
| 04. April    | 10. October   |
| 05. May      | 11. November  |
| 06. June     | 12. December  |



Edit: Months in CH\_Q415 must be within months in CH\_Q375 and CH\_Q380;  
If not go to CH\_E415  
Otherwise, if more employers go to CH\_C001;  
if no more employers go to SE\_C001

CH\_E415: Check dates. Months looked for work in CH\_Q415 should be within dates of absence. Go back to CH\_Q375, CH\_Q380 or CH\_Q415 to correct.

Start: date of absence

End: date of absence

To correct

go to CH\_Q375 or CH\_Q415

Otherwise

if more employers go to CH\_C001;

if no more employers go to SE\_C001

### 5.3 SE Module

SE\_C001: If there are jobless spells and if  
Compinfo.lookwk59 =1 (was  
jobless Jan. 1/[reference year]) and  
gap started <= Jan 6 of [reference year] go to SE\_Q001  
If a jobless spell identified during current  
interview go to SE\_Q005  
If there are no jobless spells go to CO\_C001  
If start date or end date of jobless spell = R/DK go to CO\_C001

Header for SE Module: Non working period from \_\_\_\_\_ to \_\_\_\_\_

SE\_Q001: **Based on our interview of a year ago, [respondent] was looking for work around the beginning of January [reference year]. Is this correct?**

**Based on our interview of a year ago, you were looking for work around the beginning of January [reference year]. Is this correct?**

1. Yes
2. No
8. Refuse
9. Don't know

If Yes

go to SE\_Q010

If No/Refuse/Don't know

go to SE\_Q005

SE\_Q005: **Did [respondent] look for work at any time between [start date of jobless spell] and [end date of jobless spell]?**

**Did you look for work at any time between [start date of jobless spell] and [end date of jobless spell]?**

1. Yes
2. No
8. Refuse
9. Don't know

If Yes go to SE\_Q010  
If No/Refuse/Don't know go to SE\_Q015

SE\_Q010: **In which months did he look?**

**In which months did she look?**

**In which months did you look?**

1. In all months of jobless spell
2. Specify months
8. Refuse
9. Don't know

If answered 'In all months of jobless spell'/Refuse/Don't know if another jobless spell, go to SE\_Q005;  
if no more jobless spells, go to CO\_C001  
Otherwise go to SE\_N010

SE\_N010: INTERVIEWER: Indicate months looked for work. Months must be between [start of jobless spell] and [end of jobless spell]. Select from list of months; mark all that apply

- |              |               |
|--------------|---------------|
| 01. January  | 07. July      |
| 02. February | 08. August    |
| 03. March    | 09. September |
| 04. April    | 10. October   |
| 05. May      | 11. November  |
| 06. June     | 12. December  |

If another jobless spell go to SE\_Q005  
If no more jobless spells go to CO\_C001

Edit: Months looked for work must be between start and end dates of jobless spell.  
If not go SE\_E010

SE\_E010: Check dates. Months looked for work in SE\_Q010 should be within jobless dates in SE\_Q005.

If another jobless spell go to SE\_Q005  
If no more jobless spells go to CO\_C001

SE\_Q015: **Did he want a job during this period?**

**Did she want a job during this period?**

**Did you want a job during this period?**

1. Yes
2. No
8. Refuse
9. Don't know

If Yes go to SE\_Q020  
If No/Refuse/Don't know if more jobless spells, go to SE\_Q005;  
if no more jobless spells, go to CO\_C001

SE\_Q020: **What was the main reason he did not look for work during this period?**

**What was the main reason she did not look for work during this period?**

**What was the main reason you did not look for work during this period?**

01. Own illness or disability
02. Caring for own children
03. Caring for elder relative(s)
04. Other personal or family responsibilities
05. Going to school
06. Waiting for recall (to former job)
07. Waiting for replies from employers
08. Believes no work available
09. No reason given

- 10. Other (specify)
- 98. Refuse
- 99. Don't know

If answered "Other" go to SE\_Q020S  
 Otherwise if another jobless spell, go to SE\_Q005;  
 if no more jobless spells, go to CO\_C001

SE\_Q020S: INTERVIEWER: Specify

Maximum: 80 bytes

If another jobless spell go to SE\_Q005  
 If no more jobless spells go to CO\_C001

#### 5.4 CO Module

CO\_C001: If Hhinfo.ui\_flg59 = 1 (received Employment Insurance benefits in December [previous reference year]) go to CO\_Q005  
 If Hhinfo.ui\_flg59 = 2 go to CO\_Q010

CO\_Q005: **Based on our interview of a year ago, [respondent] received Employment Insurance benefits in December [previous year]. Is this correct?**

**Based on our interview of a year ago, you received Employment Insurance benefits in December [previous year]. Is this correct?**

- 1. Yes
- 2. No
- 8. Refuse
- 9. Don't know

go to CO\_Q010

CO\_Q010: **Did [respondent] receive any income from Employment Insurance benefits in [reference year]?**

**Did you receive any income from Employment Insurance benefits in [reference year]?**

- 1. Yes

- 2. No
- 8. Refuse
- 9. Don't know

If Yes go to CO\_Q015  
 Otherwise go to CO\_C020

CO\_Q015: **In which months?**

- 1. All months of the year go to CO\_C020
- 2. Specify months go to CO\_N015
- 8. Refuse go to CO\_C020
- 9. Don't know go to CO\_C020

CO\_N015: INTERVIEWER: Indicate months Employment Insurance benefits received

- |              |               |
|--------------|---------------|
| 01. January  | 07. July      |
| 02. February | 08. August    |
| 03. March    | 09. September |
| 04. April    | 10. October   |
| 05. May      | 11. November  |
| 06. June     | 12. December  |

If response = Refuse or Don't know go to CO\_C015  
 Otherwise go to CO\_C020

CO\_C015: If CO\_N015 = Refuse/Don't know, then set CO\_Q015 to Refuse/Don't know  
 Go to CO\_C020

CO\_C020: If Hhinfo.wrkcmp59 = 1 (received Workers' Compensation benefits in December [previous reference year]) go to CO\_Q020  
 If Hhinfo.wrkcmp59 = 2 go to CO\_Q025

CO\_Q020: **Based on our interview of a year ago, he received Workers' Compensation benefits in December [previous year]. Is this correct?**

**Based on our interview of a year ago, she received Workers' Compensation benefits in December [previous year]. Is this correct?**

**Based on our interview of a year ago, you received Workers' Compensation benefits in December [previous year]. Is this correct?**

1. Yes
2. No
8. Refuse
9. Don't know

go to CO\_Q025

**CO\_Q025: Did he receive any income from Workers' Compensation benefits in [reference year]?**

**Did she receive any income from Workers' Compensation benefits in [reference year]?**

**Did you receive any income from Workers' Compensation benefits in [reference year]?**

1. Yes
2. No
8. Refuse
9. Don't know

If Yes go to CO\_Q030  
Otherwise go to CO\_C035

**CO\_Q030: In which months?**

1. All months of the year go to CO\_C035
2. Specify months go to CO\_N030
8. Refuse go to CO\_C035
9. Don't know go to CO\_C035

**CO\_N030: INTERVIEWER: Indicate months Workers' Compensation benefits received**

- |              |               |
|--------------|---------------|
| 01. January  | 07. July      |
| 02. February | 08. August    |
| 03. March    | 09. September |
| 04. April    | 10. October   |
| 05. May      | 11. November  |
| 06. June     | 12. December  |

If response = Refuse or Don't know go to CO\_C030

Otherwise go to CO\_C035

CO\_C030: If CO\_N030 = Refuse/Don't know, then set CO\_Q030 to Refuse/Don't know  
Go to CO\_C035

CO\_C035: If Hhinfo.socass = 1 (received Social Assistance in December [previous reference year] go to CO\_Q035  
If Hhinfo.socass = 2 go to CO\_Q040

CO\_Q035: **Based on our interview of a year ago, he received Social Assistance or welfare in December [previous year]. Is this correct?**

**Based on our interview of a year ago, she received Social Assistance or welfare in December [previous year]. Is this correct?**

**Based on our interview of a year ago, you received Social Assistance or welfare in December [previous year]. Is this correct?**

1. Yes
2. No
8. Refuse
9. Don't know

go to CO\_Q040

CO\_Q040: **Did he receive any income from Social Assistance or welfare in [reference year]?**

**Did she receive any income from Social Assistance or welfare in [reference year]?**

**Did you receive any income from Social Assistance or welfare in [reference year]?**

1. Yes
2. No
8. Refuse
9. Don't know

If Yes go to CO\_Q045  
Otherwise go to SP\_Q001

CO\_Q045: **In which months?**

1. All months of the year
2. Specify months
8. Refuse
9. Don't know

If "Specify months" go to CO\_N045  
Otherwise go to SP\_Q001

CO\_N045: INTERVIEWER: Indicate months Social assistance received

- |              |               |
|--------------|---------------|
| 01. January  | 07. July      |
| 02. February | 08. August    |
| 03. March    | 09. September |
| 04. April    | 10. October   |
| 05. May      | 11. November  |
| 06. June     | 12. December  |

If response = Refuse or Don't know go to CO\_C045  
Otherwise go to SP\_Q001

CO\_C045: If CO\_N045 = Refuse/Don't know, then set CO\_Q045 to Refuse/Don't know  
Go to SP\_Q001

## 5.5 SP Module

SP\_Q001: **In [reference year], did he RECEIVE any support payments from a former spouse or partner? By support payments we mean alimony, separation allowance, or child support.**

**In [reference year], did she RECEIVE any support payments from a former spouse or partner? By support payments we mean alimony, separation allowance, or child support.**

**In [reference year], did you RECEIVE any support payments from a former spouse or partner? By support payments we mean alimony, separation allowance, or child support.**

INTERVIEWER: "Support payments" are covered by an agreement to pay a fixed amount on a regular basis. Exclude all other gifts or transfers of money. Include only support payments actually received.



- 1. Yes
- 2. No
- 8. Refuse
- 9. Don't know

If Yes    go to SP\_Q005  
 Otherwise                                        go to SP\_Q010

SP\_Q001 to SP\_Q015 Notes:

- Report the total amount: child and spousal
- Exclude payments tied to one specific type of expenditure, such as child care services, medical expenses or education expenses, including trust funds.
- May be paid/received by direct payment to/by the recipient OR through a government agency that garnishees the funds from the payor's paycheck. Include either type.
- If support payments were paid to, or received by, two or more former spouses or partners, add the two together, i.e., treat them as one total set of payments.
- Exclude divorce settlements.

SP\_Q005:     **What was the total amount he RECEIVED in support payments in [reference year]?**

**What was the total amount she RECEIVED in support payments in [reference year]?**

**What was the total amount you RECEIVED in support payments in [reference year]?**

Hard range:    minimum: \$            1  
                       maximum: \$ 99999995

Soft range:     = \$1 and < \$99996

go to SP\_Q010

SP\_Q010:     **In [reference year], did he PAY any support payments to a former spouse or partner?**

**In [reference year], did she PAY any support payments to a former spouse or partner?**

**In [reference year], did you PAY any support payments to a former spouse or partner?**

**INTERVIEWER:** “Support payments” are covered by an agreement to pay a fixed amount on a regular basis. Exclude all other gifts or transfers of money. Include only support payments actually paid.

- 1. Yes
- 2. No
- 8. Refuse
- 9. Don't know

If Yes go to SP\_Q015  
Otherwise go to SP\_C005

**SP\_Q015: What was the total amount he PAID in support payments in [reference year]?**

**What was the total amount she PAID in support payments in [reference year]?**

**What was the total amount you PAID in support payments in [reference year]?**

Hard range: minimum: \$ 1  
maximum: \$ 99999995

Soft range: = \$1 and < \$99996

go to SP\_C005

**SP\_C005: Person had at least one job during the [reference year]:**  
(DateCntr > 0)

Yes go to SP\_C010  
No go to ED\_C001

**SP\_C010: At least one child aged 15 or younger present in household:**  
(Kids15Flg = 1)

Yes go to SP\_Q020  
No go to ED\_C001

**SP\_Q020: In [reference year], did he pay for child care, such as day care or babysitting, so that he could work at his paid job(s)?**

**In [reference year], did she pay for child care, such as day care or babysitting, so that she could work at her paid job(s)?**

**In [reference year], did you pay for child care, such as day care or babysitting, so that you could work at your paid job(s)?**

INTERVIEWER: Do not double-count any expenses paid by the household that were already reported for (or by) another household member. Exclude payments to family members living with you.

1. Yes
2. No
8. Refuse
9. Don't know

If Yes go to SP\_Q025  
Otherwise go to SP\_Q040

SP\_Q020 to SP\_Q045 Notes:

- Include day care, other care outside the home, in-home care, and before-or-after-school programs.
- Include children's camps.
- Include hours closely connected with being available for work, such as travel time.
- Exclude periods when you were looking for a job but not working at one.
- Include days when school was closed.

SP\_Q025: **What was the total amount he paid for child care in [reference year] so that he could work at his paid job(s)?**

**What was the total amount she paid for child care in [reference year] so that she could work at her paid job(s)?**

**What was the total amount you paid for child care in [reference year] so that you could work at your paid job(s)?**

INTERVIEWER: Do not double-count any expenses paid by the household that were already reported for (or by) another member.

Hard range: minimum: \$ 1  
maximum: \$ 99999995

Soft range: = \$1 and < \$99996

go to SP\_Q030

SP\_Q030: **Does this include amounts he paid for child care or programs for children so he could continue to work at his job(s) during school holidays?**

**Does this include amounts she paid for child care or programs for children so she could continue to work at her job(s) during school holidays?**

**Does this include amounts you paid for child care or programs for children so you could continue to work at your job(s) during school holidays?**

INTERVIEWER: Do not double-count any expenses paid by the household that were already reported for (or by) another household member.

1. Yes
2. No
8. Refuse
9. Don't know

If No go to SP\_Q035  
Otherwise go to ED\_C001

SP\_Q035: **What was the additional amount for school holidays?**

INTERVIEWER: Do not double-count any expenses paid by the household that were already reported for (or by) another member.

Hard range: minimum: \$ 1  
maximum: \$ 99999995

Soft range: = \$1 and < \$99996

go to ED\_C001

SP\_Q040: **During school holidays in [reference year], did he pay for babysitting or programs for children so that he could work at his paid job(s)?**

**During school holidays in [reference year], did she pay for babysitting or programs for children so that she could work at her paid job(s)?**

**During school holidays in [reference year], did you pay for babysitting or programs for children so that you could work at your paid job(s)?**

INTERVIEWER: Do not double-count any expenses paid by the household that were already reported for (or by) another member. Exclude payments to family members living with you.

- 1. Yes
- 2. No
- 8. Refuse
- 9. Don't know

If Yes go to SP\_Q045  
Otherwise go to ED\_C001

SP\_Q045: **How much were those expenses?**

Hard range: minimum: \$ 1  
maximum: \$ 9999995

Soft range: = \$1 and < \$99996

go to ED\_C001

## **5.6 ED Module**

The EDUC module basically covers two types of training activities. The first series of questions (ED\_Q021 to ED\_Q190) deals with "training programs". A program is a series of courses offered by, through or under the auspices of an educational institution (private or public) that are used as credits towards a degree, diploma or certificate.

The education module captures all institutions attended by the respondent during the reference year and all degrees, certificates or diplomas completed. This results in a series of flows for each type of institution attended (ED\_Q020). For example: if a respondent attended high school and university, we would ask ED\_Q021 to ED\_Q026 and ED\_Q130 to ED\_Q175. If another attended community college and then a business or commercial school we would ask ED\_Q030 to ED\_Q070.

If ED\_Q005 = “Yes” (attended an educational institution in the reference year), and flows for attending all institutions have been completed, ED\_Q150 asks about any other degrees, certificates or diplomas received during the reference year. This identifies situations where a respondent received a degree in the reference year although the program finished the previous year.

Without ED\_Q150, these "degrees" would not be recorded. Similarly, if ED\_Q005 = “No” then ED\_Q185 will also pick up these hidden "degrees", that is degrees or certificates awarded after the year that the respondent attended the institution.

The second series of questions (ED\_Q300 to ED\_Q350) deals with job-related “training courses”. For the purpose of the questionnaire, training activities such as courses, seminars, workshops, conferences and forums are covered by these questions.

ED\_C001:     If Hhinfo.studnt59 = 1                                 go to ED\_Q001  
              If Hhinfo.studnt59 = 2                                 go to ED\_Q005

ED\_Q001:     **Based on our interview of a year ago, [respondent] was attending a school, college or university in December [previous year]. Is this correct?**

**Based on our interview of a year ago, you were attending a school, college or university in December [previous year]. Is this correct?**

1.     Yes
2.     No
8.     Refuse
9.     Don't know

go to ED\_Q005

ED\_Q005:     **Did [respondent] attend a school, college or university in [reference year]? Only include attendance in programs taken to obtain a certificate, diploma or degree from a recognized institution.**

**Did you attend a school, college or university in [reference year]? Only include attendance in programs taken to obtain a certificate, diploma or degree from a recognized institution.**

INTERVIEWER:     Do not include courses taken for leisure, recreation or personal interest.

1. Yes
2. No
8. Refuse
9. Don't know

If Yes go to ED\_Q020  
 Otherwise go to ED\_Q185

ED\_Q020: **What type of school did he attend? Was it a(n)**

**What type of school did she attend? Was it a(n)**

**What type of school did you attend? Was it a(n)**

INTERVIEWER: Mark all that apply but select only one response per school, i.e. a place should not be listed twice because it is a trade school, but could also be called a community college.

1. **High school**
2. **Community college or institute of applied arts and technology**
3. **Business or commercial school**
4. **Trade or vocational school**
5. **CEGEP**
6. **University**
8. Refuse
9. Don't know

If answered "High school" go to ED\_Q021  
 Otherwise go to ED\_N027

ED\_Q021: **In [reference year], during which months did he attend high school?**

**In [reference year], during which months did she attend high school?**

**In [reference year], during which months did you attend high school?**

INTERVIEWER: Select all months that apply

- |              |               |
|--------------|---------------|
| 01. January  | 07. July      |
| 02. February | 08. August    |
| 03. March    | 09. September |

- |           |              |
|-----------|--------------|
| 04. April | 10. October  |
| 05. May   | 11. November |
| 06. June  | 12. December |

go to ED\_Q021A

ED\_Q021A: **In [reference year], how many weeks did he attend high school?**

**In [reference year], how many weeks did she attend high school?**

**In [reference year], how many weeks did you attend high school?**

INTERVIEWER: If respondent not sure, probe for best estimate

Hard range: minimum: 1.00  
maximum: 52.00

If amount entered is >  
(no. of months from ED\_Q021 X 5 weeks) go to ED\_E021A  
otherwise go to ED\_Q022

ED\_E021A: **Based on the months reported in the previous question, the computer has calculated the maximum number of weeks possible as [calculation]. Should we review the months reported?**

ED\_Q022: **On average, how many hours per week was that?**

INTERVIEWER: If respondent not sure, probe for best estimate

Hard range: minimum: 1.00  
maximum: 168.00

Soft range: maximum: 50.00

go to ED\_C023

ED\_C023: If age >19, go to ED\_Q023  
Otherwise, go to ED\_Q025



ED\_Q023: **When he enrolled in this high school program, did he have objectives related to a current or future job?**

**When she enrolled in this high school program, did she have objectives related to a current or future job?**

**When you enrolled in this high school program, did you have objectives related to a current or future job?**

1. Yes
2. No
8. Refuse
9. Don't know

go to ED\_C024

ED\_C024: If DA\_Q005 = Yes or DA\_Q010 = Yes or DA\_Q015 = Yes or DA\_Q025 = Yes, go to ED\_Q024  
Otherwise, go to ED\_Q025

ED\_Q024: **Did an employer provide any support while he was attending high school? For example by providing or paying for the training, allowing a flexible work schedule, providing transportation or any other type of support?**

**Did an employer provide any support while she was attending high school? For example by providing or paying for the training, allowing a flexible work schedule, providing transportation or any other type of support?**

**Did an employer provide any support while you were attending high school? For example by providing or paying for the training, allowing a flexible work schedule, providing transportation or any other type of support?**

1. Yes
2. No
8. Refuse
9. Don't know

go to ED\_Q025

ED\_Q025: **Did he complete high school in [reference year]?**

**Did she complete high school in [reference year]?**

**Did you complete high school in [reference year]?**

1. Yes
2. No
8. Refuse
9. Don't know

If No                      go to ED\_Q026  
Otherwise                go to ED\_N027

ED\_Q026:    **What is the main reason he did not complete high school?**

**What is the main reason she did not complete high school?**

**What is the main reason you did not complete high school?**

01. Still attending school
02. No main reason
03. Bored with school
04. Problems with school work
05. Teacher problems
06. Bad results at school
07. Expelled from school
08. Skipped classes
09. Pregnancy/take care of children
10. Marriage
11. Lack of time
12. Problems at home
13. Drug and alcohol problems
14. To help at home
15. Own illness, disability or accident
16. Had to work/financial reasons
17. Preferred work to school
18. Other reasons
98. Refuse
99. Don't know

go to ED\_N027

ED\_N027:    INTERVIEWER:    The following series of questions relate to education programs taken during [reference year]. Only include programs taken to obtain a certificate, diploma or degree from a recognized institution.

Press <Enter> to continue

go to next of ED\_Q030, Q055, Q080, Q105, Q130 or Q150  
depending on answers(s) marked in ED\_Q020;  
or if ED\_Q020 = R, DK go to ED\_Q185

ED\_Q030: **In [reference year], during which months did he attend the community college or institute?**

**In [reference year], during which months did she attend the community college or institute?**

**In [reference year], during which months did you attend the community college or institute?**

INTERVIEWER: Select all months that apply

- |              |               |
|--------------|---------------|
| 01. January  | 07. July      |
| 02. February | 08. August    |
| 03. March    | 09. September |
| 04. April    | 10. October   |
| 05. May      | 11. November  |
| 06. June     | 12. December  |

go to ED\_Q032

ED\_Q032: **In [reference year], how many weeks did he attend this community college or institute?**

**In [reference year], how many weeks did she attend this community college or institute?**

**In [reference year], how many weeks did you attend this community college or institute?**

INTERVIEWER: If respondent not sure, probe for best estimate

Hard range: minimum: 1.00  
maximum: 52.00

If amount entered is >  
(no. of months from ED\_Q030 X 5 weeks) go to ED\_E032  
otherwise go to ED\_Q033

ED\_E032: **Based on the months reported in the previous question, the computer has calculated the maximum number of weeks possible as [calculation]. Should we review the months reported?**

ED\_Q033: **On average, how many hours per week was that?**

INTERVIEWER: If respondent not sure, probe for best estimate

Hard range: minimum: 1.00  
maximum: 168.00

Soft range: maximum: 50.00

go to ED\_Q034

ED\_Q034: **When he enrolled in this community college or institute program, did he have objectives related to a current or future job?**

**When she enrolled in this community college or institute program, did she have objectives related to a current or future job?**

**When you enrolled in this community college or institute program, did you have objectives related to a current or future job?**

1. Yes
2. No
8. Refuse
9. Don't know

go to ED\_Q035

ED\_Q035: **What was the major field of study or specialization?**

Maximum: 48 bytes

go to ED\_Q040

ED\_Q040: **What was the main reason for choosing this field of study or specialization?**

1. **To prepare for first career**
2. **To change career**
3. **To improve career**
4. **To improve earnings**
5. **To improve knowledge**
6. **Because of interest in the subject**

7. Other (specify)
8. Refuse
9. Don't know

If answered "Other"                    go to ED\_Q040S  
Otherwise                                go to ED\_C042

ED\_Q040S: INTERVIEWER:    Specify

Maximum: 80 bytes

go to ED\_C042

ED\_C042:    If DA\_Q005 = Yes or DA\_Q010 = Yes or DA\_Q015 = Yes or  
              DA\_Q025 = Yes, go to ED\_Q042  
              Otherwise, go to ED\_Q043

ED\_Q042:    **Did an employer provide any support while he was attending  
this community college or institute? For example by providing  
or paying for the training, allowing a flexible work schedule,  
providing transportation or any other type of support?**

**Did an employer provide any support while she was attending  
this community college or institute? For example by providing  
or paying for the training, allowing a flexible work schedule,  
providing transportation or any other type of support?**

**Did an employer provide any support while you were attending  
this community college or institute? For example by providing  
or paying for the training, allowing a flexible work schedule,  
providing transportation or any other type of support?**

1. Yes
2. No
8. Refuse
9. Don't know

go to ED\_Q043

ED\_Q043:    **Did he receive any certificates or diplomas from this  
community college or institute of applied arts and technology  
in [reference year]?**

**Did she receive any certificates or diplomas from this  
community college or institute of applied arts and technology  
in [reference year]?**

**Did you receive any certificates or diplomas from this community college or institute of applied arts and technology in [reference year]?**

INTERVIEWER: Only include certificates, diplomas or degrees from a recognized institution that resulted in graduation from a program. Do not include certificates, diplomas from single courses.

1. Yes
2. No
8. Refuse
9. Don't know

If Yes go to ED\_Q045  
Otherwise go to next of ED\_Q055, Q080, Q105, Q130 or Q150 depending on answer(s) marked in ED\_Q020

ED\_Q045: **Overall, how long did it take him to complete this program?**

**Overall, how long did it take her to complete this program?**

**Overall, how long did it take you to complete this program?**

1. Answer given in months
2. Answer given in years
8. Refuse
9. Don't know

If Answer given in months go to ED\_N045  
If Answer given in years go to ED\_N050  
Otherwise go to next of ED\_Q055, Q080, Q105, Q130 or Q150 depending on answers(s) marked in ED\_Q020

ED\_N045: INTERVIEWER: Enter the number of months it took to complete this program

Hard range: minimum: 1  
maximum: 95

go to next of ED\_Q055, Q080, Q105, Q130 or Q150 depending on answers(s) marked in ED\_Q020

ED\_N050: INTERVIEWER: Enter the number of years it took to complete this program

Hard range: minimum: 1  
maximum: 7

go to next of ED\_Q055, Q080, Q105, Q130 or Q150 depending on answers(s) marked in ED\_Q020

ED\_Q055: **In [reference year], during which months did he attend the business or commercial school?**

**In [reference year], during which months did she attend the business or commercial school?**

**In [reference year], during which months did you attend the business or commercial school?**

INTERVIEWER: Select all months that apply

- |              |               |
|--------------|---------------|
| 01. January  | 07. July      |
| 02. February | 08. August    |
| 03. March    | 09. September |
| 04. April    | 10. October   |
| 05. May      | 11. November  |
| 06. June     | 12. December  |

go to ED\_Q057

ED\_Q057: **In [reference year], how many weeks did he attend this business or commercial school?**

**In [reference year], how many weeks did she attend this business or commercial school?**

**In [reference year], how many weeks did you attend this business or commercial school?**

INTERVIEWER: If respondent not sure, probe for best estimate

Hard range: minimum: 1.00  
maximum: 52.00

If amount entered >  
(no. of months from ED\_Q055) X 5 weeks go to ED\_E057

Otherwise

go to ED\_Q058

ED\_E057: **Based on the months reported in the previous question, the computer has calculated the maximum number of weeks possible as [calculation]. Should we review the months reported?**

ED\_Q058: **On average, how many hours per week was that?**

INTERVIEWER: If respondent not sure, probe for best estimate

Hard range:   minimum:       1.00  
                  maximum:      168.00

Soft range:    maximum:       50.00

go to ED\_Q059

ED\_Q059: **When he enrolled in this business or commercial school program, did he have objectives related to a current or future job?**

**When she enrolled in this business or commercial school program, did she have objectives related to a current or future job?**

**When you enrolled in this business or commercial school program, did you have objectives related to a current or future job?**

1.    Yes
2.    No
8.    Refuse
9.    Don't know

go to ED\_Q060

ED\_Q060: **What was the major field of study or specialization?**

Maximum: 48 bytes

go to ED\_Q065

ED\_Q065: **What was the main reason for choosing this field of study or specialization?**



1. **To prepare for first career**
2. **To change career**
3. **To improve career**
4. **To improve earnings**
5. **To improve knowledge**
6. **Because of interest in the subject**
7. Other (specify)
8. Refuse
9. Don't know

If answered "Other"                    go to ED\_Q065S  
 Otherwise                                go to ED\_C067

ED\_Q065S: INTERVIEWER:    Specify

Maximum: 80 bytes

go to ED\_C067

ED\_C067:    If DA\_Q005 = Yes or DA\_Q010 = Yes or DA\_Q015 = Yes or  
 DA\_Q025 = Yes, go to ED\_Q067  
 Otherwise, go to ED\_Q068

ED\_Q067:    **Did an employer provide any support while he was attending  
 this business or commercial school? For example by providing  
 or paying for the training, allowing a flexible work schedule,  
 providing transportation or any other type of support?**

**Did an employer provide any support while she was this  
 business or commercial school? For example by providing or  
 paying for the training, allowing a flexible work schedule,  
 providing transportation or any other type of support?**

**Did an employer provide any support while you were attending  
 this business or commercial school? For example by providing  
 or paying for the training, allowing a flexible work schedule,  
 providing transportation or any other type of support?**

1. Yes
2. No
8. Refuse
9. Don't know

go to ED\_Q068

ED\_Q068: **Did he receive any certificates or diplomas from this business or commercial school in [reference year]?**

**Did she receive any certificates or diplomas from this business or commercial school in [reference year]?**

**Did you receive any certificates or diplomas from this business or commercial school in [reference year]?**

INTERVIEWER: Only include certificates, diplomas or degrees from a recognized institution that resulted in graduation from a program. Do not include certificates, diplomas from single courses.

1. Yes
2. No
8. Refuse
9. Don't know

If Yes go to ED\_Q070  
Otherwise go to next of ED\_Q080, Q105, Q130 or Q150 depending on answer(s) marked in ED\_Q020

ED\_Q070: **Overall, how long did it take him to complete this program?**

**Overall, how long did it take her to complete this program?**

**Overall, how long did it take you to complete this program?**

1. Answer given in months
2. Answer given in years
8. Refuse
9. Don't know

If Answer given in months go to ED\_N070  
If Answer given in years go to ED\_N075  
Otherwise go to next of ED\_Q080, Q105, Q130 or Q150 depending on answers(s) marked in ED\_Q020

ED\_N070: INTERVIEWER: Enter the number of months it took to complete this program

Hard range: minimum: 1  
maximum: 95

go to next of ED\_Q080, Q105, Q130 or Q150 depending on answers(s) marked in ED\_Q020

ED\_N075: INTERVIEWER: Enter the number of years it took to complete this program

Hard range: minimum: 1  
maximum: 7

go to next of ED\_Q080, Q105, Q130 or Q150 depending on answers(s) marked in ED\_Q020

ED\_Q080: **In [reference year], during which months did he attend the trade or vocational school ?**

**In [reference year], during which months did she attend the trade or vocational school?**

**In [reference year], during which months did you attend the trade or vocational school?**

INTERVIEWER: Select all months that apply

- |              |               |
|--------------|---------------|
| 01. January  | 07. July      |
| 02. February | 08. August    |
| 03. March    | 09. September |
| 04. April    | 10. October   |
| 05. May      | 11. November  |
| 06. June     | 12. December  |

go to ED\_Q082

ED\_Q082: **In [reference year], how many weeks did he attend this trade or vocational school?**

**In [reference year], how many weeks did she attend this trade or vocational school?**

**In [reference year], how many weeks did you attend this trade or vocational school?**

INTERVIEWER: If respondent not sure, probe for best estimate

Hard range: minimum: 1.00  
maximum: 52.00

If amount entered > (no. of months  
from ED\_Q080) X 5 weeks go to ED\_E082  
Otherwise go to ED\_Q083

ED\_E082: **Based on the months reported in the previous question, the computer has calculated the maximum number of weeks possible as [calculation]. Should we review the months reported?**

ED\_Q083: **On average, how many hours per week was that?**

INTERVIEWER: If respondent not sure, probe for best estimate

Hard range: minimum: 1.00  
maximum: 168.00

Soft range: maximum: 50.00

go to ED\_Q084

ED\_Q084: **When he enrolled in this trade or vocational school program, did he have objectives related to a current or future job?**

**When she enrolled in this trade or vocational school program, did she have objectives related to a current or future job?**

**When you enrolled in this trade or vocational school program, did you have objectives related to a current or future job?**

1. Yes
2. No
8. Refuse
9. Don't know

go to ED\_Q085

ED\_Q085: **What was the major field of study or specialization?**

Maximum: 48 bytes

go to ED\_Q090

ED\_Q090: **What was the main reason for choosing this field of study or specialization?**

1. **To prepare for first career**
2. **To change career**
3. **To improve career**
4. **To improve earnings**
5. **To improve knowledge**
6. **Because of interest in the subject**
7. Other (specify)
8. Refuse
9. Don't know

If answered "Other"                    go to ED\_Q090S  
Otherwise                                go to ED\_C092

ED\_Q090S: INTERVIEWER:    Specify

Maximum: 80 bytes

go to ED\_C092

ED\_C092: If DA\_Q005 = Yes or DA\_Q010 = Yes or DA\_Q015 = Yes or  
DA\_Q025 = Yes, go to ED\_Q092  
Otherwise, go to ED\_Q093

ED\_Q092: **Did an employer provide any support while he was attending this trade or vocational school? For example by providing or paying for the training, allowing a flexible work schedule, providing transportation or any other type of support?**

**Did an employer provide any support while she was attending this trade or vocational school? For example by providing or paying for the training, allowing a flexible work schedule, providing transportation or any other type of support?**

**Did an employer provide any support while you were attending this trade or vocational school? For example by providing or paying for the training, allowing a flexible work schedule, providing transportation or any other type of support?**

1. Yes
2. No
8. Refuse
9. Don't know

go to ED\_Q093

ED\_Q093: **Did he receive any certificates or diplomas from this trade or vocational school in [reference year]?**

**Did she receive any certificates or diplomas from this trade or vocational school in [reference year]?**

**Did you receive any certificates or diplomas from this trade or vocational school in [reference year]?**

INTERVIEWER: Only include certificates, diplomas or degrees from a recognized institution that resulted in graduation from a program. Do not include certificates, diplomas from single courses.

1. Yes
2. No
8. Refuse
9. Don't know

If Yes go to ED\_Q095  
Otherwise go to next of ED\_Q105, Q130 or Q150 depending on answer(s) marked in ED\_Q020

ED\_Q095: **Overall, how long did it take him to complete this program?**

**Overall, how long did it take her to complete this program?**

**Overall, how long did it take you to complete this program?**

1. Answer given in months
2. Answer given in years
8. Refuse
9. Don't know

If Answer given in months go to ED\_N095  
If Answer given in years go to ED\_N100  
Otherwise go to next of ED\_Q105, Q130 or Q150 depending on answers(s) marked in ED\_Q020

ED\_N095: INTERVIEWER: Enter the number of months it took to complete this program

Hard range: minimum: 1  
maximum: 95

go to next of ED\_Q105, Q130 or Q150 depending on answers(s) marked in ED\_Q020

ED\_N100: INTERVIEWER: Enter the number of years it took to complete this program

Hard range: minimum: 1  
maximum: 7

go to next of ED\_Q105, Q130 or Q150 depending on answers(s) marked in ED\_Q020

ED\_Q105: **In [reference year], during which months did he attend the CEGEP?**

**In [reference year], during which months did she attend the CEGEP?**

**In [reference year], during which months did you attend the CEGEP?**

INTERVIEWER: Select all months that apply

- |              |               |
|--------------|---------------|
| 01. January  | 07. July      |
| 02. February | 08. August    |
| 03. March    | 09. September |
| 04. April    | 10. October   |
| 05. May      | 11. November  |
| 06. June     | 12. December  |

go to ED\_Q107

ED\_Q107: **In [reference year], how many weeks did he attend this CEGEP?**

**In [reference year], how many weeks did she attend this CEGEP?**

**In [reference year], how many weeks did you attend this CEGEP?**

INTERVIEWER: If respondent not sure, probe for best estimate

Hard range: minimum: 1.00  
maximum: 52.00

If amount entered > (no. of months  
from ED\_Q105) X 5 weeks go to ED\_E107  
Otherwise go to ED\_Q108

ED\_E107: **Based on the months reported in the previous question, the computer has calculated the maximum number of weeks possible as [calculation]. Should we review the months reported?**

ED\_Q108: **On average, how many hours per week was that?**

INTERVIEWER: If respondent not sure, probe for best estimate

Hard range: minimum: 1.00  
maximum: 168.00

Soft range: maximum: 50.00

go to ED\_Q109

ED\_Q109: **When he enrolled in this CEGEP program, did he have objectives related to a current or future job?**

**When she enrolled in this CEGEP program, did she have objectives related to a current or future job?**

**When you enrolled in this CEGEP program, did you have objectives related to a current or future job?**

1. Yes
2. No
8. Refuse
9. Don't know

go to ED\_Q110



ED\_Q110: **What was the major field of study or specialization?**

Maximum: 48 bytes

go to ED\_Q115

ED\_Q115: **What was the main reason for choosing this field of study or specialization?**

1. **To prepare for first career**
2. **To change career**
3. **To improve career**
4. **To improve earnings**
5. **To improve knowledge**
6. **Because of interest in the subject**
7. Other (specify)
8. Refuse
9. Don't know

If answered "Other"                      go to ED\_Q115S  
Otherwise                                      go to ED\_C117

ED\_Q115S: INTERVIEWER:      Specify

Maximum: 80 bytes

go to ED\_C117

ED\_C117: If DA\_Q005 = Yes or DA\_Q010 = Yes or DA\_Q015 = Yes or  
DA\_Q025 = Yes, go to ED\_Q117  
Otherwise, go to ED\_Q118

ED\_Q117: **Did an employer provide any support while he was attending this CEGEP? For example by providing or paying for the training, allowing a flexible work schedule, providing transportation or any other type of support?**

**Did an employer provide any support while she was attending this CEGEP? For example by providing or paying for the training, allowing a flexible work schedule, providing transportation or any other type of support?**

**Did an employer provide any support while you were attending this CEGEP? For example by providing or paying for the training, allowing a flexible work schedule, providing transportation or any other type of support?**

1. Yes
2. No
8. Refuse
9. Don't know

go to ED\_Q118

ED\_Q118: **Did he receive any certificates or diplomas from this CEGEP in [reference year]?**

**Did she receive any certificates or diplomas from this CEGEP in [reference year]?**

**Did you receive any certificates or diplomas from this CEGEP in [reference year]?**

INTERVIEWER: Only include certificates, diplomas or degrees from a recognized institution that resulted in graduation from a program. Do not include certificates, diplomas from single courses.

1. Yes
2. No
8. Refuse
9. Don't know

If Yes go to ED\_Q120  
 Otherwise go to next of ED\_Q130 or Q150 depending on answer(s) marked in ED\_Q020

ED\_Q120: **Overall, how long did it take him to complete this program?**

**Overall, how long did it take her to complete this program?**

**Overall, how long did it take you to complete this program?**

1. Answer given in months
2. Answer given in years
8. Refuse
9. Don't know

If Answer given in months go to ED\_N120  
 If Answer given in years go to ED\_N125

Otherwise go to next of ED\_Q130 or Q150 depending on answers(s) marked in ED\_Q020

ED\_N120: INTERVIEWER: Enter the number of months it took to complete this program

Hard range: minimum: 1  
maximum: 95

go to next of ED\_Q130 or Q150 depending on answers(s) marked in ED\_Q020

ED\_N125: INTERVIEWER: Enter the number of years it took to complete this program

Hard range: minimum: 1  
maximum: 7

go to next of ED\_Q130 or Q150 depending on answers(s) marked in ED\_Q020

ED\_Q130: **In [reference year], during which months did he attend university?**

**In [reference year], during which months did she attend university?**

**In [reference year], during which months did you attend university?**

INTERVIEWER: Select all months that apply

- |              |               |
|--------------|---------------|
| 01. January  | 07. July      |
| 02. February | 08. August    |
| 03. March    | 09. September |
| 04. April    | 10. October   |
| 05. May      | 11. November  |
| 06. June     | 12. December  |

go to ED\_Q132

ED\_Q132: **In [reference year], how many weeks did he attend university?**

**In [reference year], how many weeks did she attend university?**

**In [reference year], how many weeks did you attend university?**

INTERVIEWER: If respondent not sure, probe for best estimate

Hard range: minimum: 1.00  
maximum: 52.00

If amount entered > (no. of months from ED\_Q130) X 5 weeks go to ED\_E132  
Otherwise go to ED\_Q133

ED\_E132: **Based on the months reported in the previous question, the computer has calculated the maximum number of weeks possible as [calculation]. Should we review the months reported?**

ED\_Q133: **On average, how many hours per week was that?**

INTERVIEWER: If respondent not sure, probe for best estimate

Hard range: minimum: 1.00  
maximum: 168.00

Soft range: maximum: 50.00

go to ED\_Q135

ED\_Q135: **During [reference year], what was the highest university level he was enrolled in?**

**During [reference year], what was the highest university level she was enrolled in?**

**During [reference year], what was the highest university level you were enrolled in?**

1. University certificate/diploma below bachelor degree
2. Bachelor's degree(s) (e.g. B.A., B.Sc., B.Ed., B.Eng.)
3. University certificate/diploma above bachelor level but below master level
4. First professional degree in law, dentistry, veterinary medicine, optometry

5. Master's degree(s) (e.g. M.A., M.Sc., M.Ed., M.B.A., M.Eng.)
6. Ph.D. degree (e.g. Doctorate, D.Sc., D.Ed.)
8. Refuse
9. Don't know

go to ED\_Q138

ED\_Q138: **When he enrolled in this university program, did he have objectives related to a current or future job?**

**When she enrolled in this university program, did she have objectives related to a current or future job?**

**When you enrolled in this university program, did you have objectives related to a current or future job?**

1. Yes
2. No
8. Refuse
9. Don't know

go to ED\_Q140

ED\_Q140: **What was the major field of study or specialization?**

Maximum: 48 bytes

go to ED\_Q145

ED\_Q145: **What was the main reason for choosing this field of study or specialization?**

1. **To prepare for first career**
2. **To change career**
3. **To improve career**
4. **To improve earnings**
5. **To improve knowledge**
6. **Because of interest in the subject**
7. Other (specify)
8. Refuse
9. Don't know

If answered "Other"  
Otherwise

go to ED\_Q145S  
go to ED\_C146

ED\_Q145S: INTERVIEWER: Specify

Maximum: 80 bytes

go to ED\_C146

ED\_C146: If DA\_Q005 = Yes or DA\_Q010 = Yes or DA\_Q015 = Yes or DA\_Q025 = Yes, go to ED\_Q146  
Otherwise, go to ED\_Q147

ED\_Q146: **Did an employer provide any support while he was attending university? For example by providing or paying for the training, allowing a flexible work schedule, providing transportation or any other type of support?**

**Did an employer provide any support while she was attending university? For example by providing or paying for the training, allowing a flexible work schedule, providing transportation or any other type of support?**

**Did an employer provide any support while you were attending university? For example by providing or paying for the training, allowing a flexible work schedule, providing transportation or any other type of support?**

1. Yes
2. No
8. Refuse
9. Don't know

go to ED\_Q147

ED\_Q147: **Did he graduate from this university program in [reference year]?**

**Did she graduate from this university program in [reference year]?**

**Did you graduate from this university program in [reference year]?**

INTERVIEWER: Only include certificates, diplomas or degrees from a recognized institution that resulted in graduation from a program. Do not include certificates, diplomas from single courses.

- 1. Yes
- 2. No
- 8. Refuse
- 9. Don't know

If Yes go to ED\_Q148  
 Otherwise go to ED\_Q150

ED\_Q148: **Overall, how long did it take him to complete this program?**

**Overall, how long did it take her to complete this program?**

**Overall, how long did it take you to complete this program?**

- 1. Answer given in months
- 2. Answer given in years
- 8. Refuse
- 9. Don't know

If Answer given in months go to ED\_N149  
 If Answer given in years go to ED\_N149A  
 Otherwise go to ED\_Q150

ED\_N149: INTERVIEWER: Enter the number of months it took to complete this program

Hard range: minimum: 1  
 maximum: 95

go to ED\_Q150

ED\_N149A: INTERVIEWER: Enter the number of years it took to complete this program

Hard range: minimum: 1  
 maximum: 15

go to ED\_Q150

ED\_Q150: **Did he receive any other degrees, certificates or diplomas in [reference year]?**

**Did she receive any other degrees, certificates or diplomas in [reference year]?**

**Did you receive any other degrees, certificates or diplomas in [reference year]?**

INTERVIEWER: Only include certificates, diplomas or degrees from a recognized institution that resulted in graduation from a program. Do not include certificates, diplomas from single courses.

1. Yes
2. No
8. Refuse
9. Don't know

If Yes go to ED\_Q155  
Otherwise go to ED\_C300

ED\_Q155: **From what kind of institution did he receive this diploma?  
Was it a . . .**

**From what kind of institution did she receive this diploma?  
Was it a . . .**

**From what kind of institution did you receive this diploma?  
Was it a . . .**

1. **High school** go to ED\_C163
2. **Community college or institute of applied arts and technology** go to ED\_Q163
3. **Business or commercial school** go to ED\_Q163
4. **Trade or vocational school** go to ED\_Q163
5. **CEGEP** go to ED\_Q163
6. **University** go to ED\_Q160
8. Refuse go to ED\_C300
9. Don't know go to ED\_C300

ED\_Q160: **What degree, certificate or diploma did he receive?**

**What degree, certificate or diploma did she receive?**

**What degree, certificate or diploma did you receive?**

1. University certificate/diploma below bachelor degree
2. Bachelor's degree(s) (e.g. B.A., B.Sc., B.Ed., B.Eng.)
3. University certificate/diploma above bachelor level but below master level



4. First professional degree in law, dentistry, veterinary medicine, optometry
5. Master's degree(s) (e.g. M.A., M.Sc., M.Ed., M.B.A., M.Eng.)
6. Ph.D. degree (e.g. Doctorate, D.Sc., D.Ed.)
8. Refuse
9. Don't know

go to ED\_Q163

ED\_C163: If age > 19, go to ED\_Q163  
Otherwise, go to ED\_C300

ED\_Q163: **When he enrolled in this program, did he have objectives related to a current or future job?**

**When she enrolled in this program, did she have objectives related to a current or future job?**

**When you enrolled in this program, did you have objectives related to a current or future job?**

1. Yes
2. No
8. Refuse
9. Don't know

If ED\_Q155 = 1 "High school" or  
if ED\_Q190 = 1 "High school" go to ED\_C172  
Otherwise go to ED\_Q165

ED\_Q165: **What was the major field of study or specialization?**

Maximum: 48 bytes

go to ED\_Q170

ED\_Q170: **What was the main reason for choosing this field of study or specialization?**

1. **To prepare for first career**
2. **To change career**
3. **To improve career**
4. **To improve earnings**
5. **To improve knowledge**
6. **Because of interest in the subject**

7. Other (specify)
8. Refuse
9. Don't know

If answered "Other"                    go to ED\_Q170S  
 Otherwise                                    go to ED\_C172

ED\_Q170S: INTERVIEWER:    Specify

Maximum: 80 bytes

go to ED\_C172

ED\_C172:    If DA\_Q005 = Yes or DA\_Q010 = Yes or DA\_Q015 = Yes or  
 DA\_Q025 = Yes, go to ED\_Q172  
 Otherwise, go to ED\_Q175

ED\_Q172:    **Did an employer provide any support while he was attending  
 this program? For example by providing or paying for the  
 training, allowing a flexible work schedule, providing  
 transportation or any other type of support?**

**Did an employer provide any support while she was attending  
 this program? For example by providing or paying for the  
 training, allowing a flexible work schedule, providing  
 transportation or any other type of support?**

**Did an employer provide any support while you were attending  
 this program? For example by providing or paying for the  
 training, allowing a flexible work schedule, providing  
 transportation or any other type of support?**

1. Yes
2. No
8. Refuse
9. Don't know

If ED\_Q155 = 1 "High school" or  
 if ED\_Q190 = 1 "High school"                    go to ED\_C300  
 Otherwise    go to ED\_Q175

ED\_Q175:    **Overall, how long did it take him to complete this program?**

**Overall, how long did it take her to complete this program?**

**Overall, how long did it take you to complete this program?**

1. Answer given in months
2. Answer given in years
8. Refuse
9. Don't know

If Answer given in months go to ED\_N175  
 If Answer given in years go to ED\_N180  
 Otherwise go to ED\_C300

ED\_N175: INTERVIEWER: Enter the number of months it took to complete this program

Hard range: minimum: 1  
 maximum: 95

go to ED\_C300

ED\_N180: INTERVIEWER: Enter the number of years it took to complete this program

Hard range: minimum: 1  
 maximum: 7

go to ED\_C300

ED\_Q185: **Did he receive a degree, certificate or diploma in [reference year]?**

**Did she receive a degree, certificate or diploma in [reference year]?**

**Did you receive a degree, certificate or diploma in [reference year]?**

INTERVIEWER: Only include certificates, diplomas or degrees from a recognized institution that resulted in graduation from a program. Do not include certificates, diplomas from single courses.

1. Yes
2. No
8. Refuse
9. Don't know

If Yes                      go to ED\_Q190  
Otherwise                    go to ED\_C300

ED\_Q190:    **From what kind of institution did he receive this diploma?  
Was it a . . .**

**From what kind of institution did she receive this diploma?  
Was it a . . .**

**From what kind of institution did you receive this diploma?  
Was it a . . .**

- |    |  |               |
|----|--|---------------|
| 1. | <b>High school</b>   | go to ED_C163 |
| 2. | <b>Community college or institute<br/>of applied arts and technology</b> | go to ED_Q163 |
| 3. | <b>Business or commercial school</b>                                     | go to ED_Q163 |
| 4. | <b>Trade or vocational school</b>  | go to ED_Q163 |
| 5. | <b>CEGEP</b>   | go to ED_Q163 |
| 6. | <b>University</b>  | go to ED_Q160 |
| 8. | Refuse   | go to ED_C300 |
| 9. | Don't know   | go to ED_C300 |

ED\_C300:    If (ED\_Q020 = 1, 2, 3, 4, 5 or 6) or (ED\_Q150 = 1) or (ED\_Q185 = 1), then invoke the second prefill in ED\_Q300 [other than program(s) you have already mentioned];  
Otherwise, do not invoke the second prefill

go to ED\_Q300

ED\_Q300:    **In [reference year], [ other than the program(s) you have  
already mentioned,] did he take any courses, workshops,  
seminars or training related to a current or future job?**

**In [reference year], [ other than the program(s) you have  
already mentioned,] did she take any courses, workshops,  
seminars or training related to a current or future job?**

**In [reference year], [ other than the program(s) you have  
already mentioned,] did you take any courses, workshops,  
seminars or training related to a current or future job?**

1. Yes
2. No
8. Refuse
9. Don't know

If Yes                      go to ED\_Q305  
Otherwise                  go to DI\_C001

ED\_Q305:    **What was the name or subject of the most important course he took in [reference year]?**

**What was the name or subject of the most important course she took in [reference year]?**

**What was the name or subject of the most important course you took in [reference year]?**

INTERVIEWER:    If the respondent has a problem selecting the most important course, ask them to select the one that he or she remembers the most.

Maximum: 80 bytes

go to ED\_Q310

ED\_Q310:    **What was the main reason for choosing this subject?**

1.    **To prepare for first career**
2.    **To change career**
3.    **To improve career**
4.    **To improve earnings**
5.    **To improve knowledge**
6.    **Because of interest in the subject**
7.    Other (specify)
8.    Refuse
9.    Don't know

If answered "Other (specify)"              go to ED\_Q310S  
Otherwise    go to ED\_Q315

ED\_Q310S: INTERVIEWER:    Specify

Maximum: 80 bytes

go to ED\_Q315

ED\_Q315:    **During which months in [reference year] did he attend this course?**

**During which months in [reference year] did she attend this course?**

**During which months in [reference year] did you attend this course?**

INTERVIEWER: Select all months that apply

- |              |               |
|--------------|---------------|
| 01. January  | 07. July      |
| 02. February | 08. August    |
| 03. March    | 09. September |
| 04. April    | 10. October   |
| 05. May      | 11. November  |
| 06. June     | 12. December  |

go to ED\_Q320

ED\_Q320: **Would it be best to describe the total time he spent in this course in terms of weeks, days or hours?**

**Would it be best to describe the total time she spent in this course in terms of weeks, days or hours?**

**Would it be best to describe the total time you spent in this course in terms of weeks, days or hours?**

- |               |               |
|---------------|---------------|
| 1. Weeks      | go to ED_Q325 |
| 2. Days       | go to ED_Q335 |
| 3. Hours      | go to ED_Q345 |
| 8. Refuse     | go to ED_C350 |
| 9. Don't know | go to ED_C350 |

ED\_Q325: **In total, how many weeks did he spend in this course in [reference year]?**

**In total, how many weeks did she spend in this course in [reference year]?**

**In total, how many weeks did you spend in this course in [reference year]?**

INTERVIEWER: If respondent not sure, probe for best estimate

Hard range: minimum: 1.00  
maximum: 52.00

If amount entered > (no. of months from ED\_Q320) X 5 weeks go to ED\_E325

Otherwise

go to ED\_Q330

ED\_E325: **Based on the months reported in the previous question, the computer has calculated the maximum number of weeks possible as [calculation]. Should we review the months reported?**

ED\_Q330: **On average, how many hours per week was that?**

INTERVIEWER: If respondent not sure, probe for best estimate

Hard range: minimum: 1.00  
maximum: 168.00

Soft range: maximum: 50.00

go to ED\_C350

ED\_Q335: **In total, how many days did he spend in this course in [reference year]?**

**In total, how many days did she spend in this course in [reference year]?**

**In total, how many days did you spend in this course in [reference year]?**

INTERVIEWER: If respondent not sure, probe for best estimate

Hard range: minimum: 1.00  
maximum: 366.00

go to ED\_Q340

ED\_Q340: **On average, how many hours per day was that?**

INTERVIEWER: If respondent not sure, probe for best estimate

Hard range: minimum: 1.00  
maximum: 24.00

go to ED\_C350

ED\_Q345: **In total, how many hours did he spend in this course in [reference year]?**

**In total, how many hours did she spend in this course in [reference year]?**

**In total, how many hours did you spend in this course in [reference year]?**

INTERVIEWER: If respondent not sure, probe for best estimate

Hard range: minimum: 1.00  
maximum: 8760.00

go to ED\_C350

ED\_C350: If DA\_Q005 = Yes or DA\_Q010 = Yes or DA\_Q015 = Yes or DA\_Q025 = Yes, go to ED\_Q350  
Otherwise, go to DI\_C001

ED\_Q350: **Did an employer provide any support during this course? For example by providing or paying for the training, allowing a flexible work schedule, providing transportation or any other type of support?**

1. Yes
2. No
8. Refuse
9. Don't know

go to DI\_C001

## 5.7 DI Module

DI\_C001: all respondents go to DI\_Q005

DI\_Q005: **In general, how would you describe [respondent's] state of health? Would you say it is . . .**

**In general, how would you describe, [respondent's] state of health? Would you say it is . . .**

**In general, how would you describe your state of health? Would you say it is . . .**



1. **Excellent ?**
2. **Very good ?**
3. **Good ?**
4. **Fair ?**
5. **Poor ?**
8. Refuse
9. Don't know

go to DI\_Q010

DI\_Q010: **Would you describe his life as . . .**

**Would you describe her life as . . .**

**Would you describe your life as . . .**

1. **Very stressful ?**
2. **Moderately stressful ?**
3. **Rarely stressful ?**
4. **Not at all stressful ?**
5. **No opinion**
8. Refuse
9. Don't know

go to DI\_Q015

DI\_Q015: **Does he have any difficulty hearing, seeing, communicating, walking, climbing stairs, bending, learning or doing any similar activities ?**

**Does she have any difficulty hearing, seeing, communicating, walking, climbing stairs, bending, learning or doing any similar activities ?**

**Do you have any difficulty hearing, seeing, communicating, walking, climbing stairs, bending, learning or doing any similar activities ?**

- |    |                       |                  |
|----|-----------------------|------------------|
| 1. | <b>Yes, sometimes</b> | set flgdisab = 1 |
| 2. | <b>Yes, often</b>     | set flgdisab = 1 |
| 3. | <b>No</b>             |                  |
| 8. | Refuse                |                  |
| 9. | Don't know            |                  |

go to DI\_Q020

DI\_Q020: **Does a physical condition or mental condition or health problem reduce the amount or the kind of activity he can do at home?**

**Does a physical condition or mental condition or health problem reduce the amount or the kind of activity she can do at home?**

**Does a physical condition or mental condition or health problem reduce the amount or the kind of activity you can do at home?**

- |    |                       |                  |
|----|-----------------------|------------------|
| 1. | <b>Yes, sometimes</b> | set flgdisab = 1 |
| 2. | <b>Yes, often</b>     | set flgdisab = 1 |
| 3. | <b>No</b>             |                  |
| 8. | Refuse                |                  |
| 9. | Don't know            |                  |

go to DI\_C020

DI\_C020: If respondent is 70+ go to DI\_Q033  
If respondent is < 70 and respondent worked  
in [reference year] (flag: datescntr > 0) go to DI\_Q025  
Otherwise go to DI\_Q030

DI\_Q025: **Does a physical condition or mental condition or health problem reduce the amount or the kind of activity he can do at work?**

**Does a physical condition or mental condition or health problem reduce the amount or the kind of activity she can do at work?**

**Does a physical condition or mental condition or health problem reduce the amount or the kind of activity you can do at work?**

- |    |                       |                  |
|----|-----------------------|------------------|
| 1. | <b>Yes, sometimes</b> | set flgdisab = 1 |
| 2. | <b>Yes, often</b>     | set flgdisab = 1 |
| 3. | <b>No</b>             |                  |
| 8. | Refuse                |                  |
| 9. | Don't know            |                  |

go to DI\_Q033

DI\_Q030: **Does a physical condition or mental condition or health problem reduce the amount or the kind of activity he can do at a job or business or at school?**

**Does a physical condition or mental condition or health problem reduce the amount or the kind of activity she can do at a job or business or at school?**

**Does a physical condition or mental condition or health problem reduce the amount or the kind of activity you can do at a job or business or at school?**

- |    |                       |                  |
|----|-----------------------|------------------|
| 1. | <b>Yes, sometimes</b> | set flgdisab = 1 |
| 2. | <b>Yes, often</b>     | set flgdisab = 1 |
| 3. | <b>No</b>             |                  |
| 8. | Refuse                |                  |
| 9. | Don't know            |                  |

go to DI\_Q033

DI\_Q033: **Does a physical condition or mental condition or health problem reduce the amount or the kind of activity he can do in other activities, for example, transportation or leisure?**

**Does a physical condition or mental condition or health problem reduce the amount or the kind of activity she can do in other activities, for example, transportation or leisure?**

**Does a physical condition or mental condition or health problem reduce the amount or the kind of activity you can do in other activities, for example, transportation or leisure?**

- |    |                       |                  |
|----|-----------------------|------------------|
| 1. | <b>Yes, sometimes</b> | set flgdisab = 1 |
| 2. | <b>Yes, often</b>     | set flgdisab = 1 |
| 3. | <b>No</b>             |                  |
| 8. | Refuse                |                  |
| 9. | Don't know            |                  |

go to DI\_C015

DI_C015:	If flgdisab = 1	go to DI_Q035
	Otherwise	go to EN_C001

DI\_Q035: **In what year did his condition begin?**

**In what year did her condition begin?**

**In what year did your condition begin?**

INTERVIEWER: Answer should be year the condition started

Hard range: minimum: dob of respondent (refyear – age)  
maximum: current year

If respondent is < 70 and respondent worked  
in [reference year] (flag: datescntr > 0) go to DI\_Q040  
If respondent is 70+ go to EN\_C001  
Otherwise go to DI\_Q065

DI\_Q040: **Does his condition make it difficult for him to change jobs or to get a better job?**

**Does her condition make it difficult for her to change jobs or to get a better job?**

**Does your condition make it difficult for you to change jobs or to get a better job?**

1. Yes
2. No
8. Refuse
9. Don't know

go to DI\_Q045

DI\_Q045: **Was he satisfied with the number of weeks he worked in [reference year]?**

**Was she satisfied with the number of weeks she worked in [reference year]?**

**Were you satisfied with the number of weeks you worked in [reference year]?**

1. Yes go to EN\_C001
2. No go to DI\_Q050
8. Refuse go to DI\_Q050
9. Don't know go to DI\_Q050

DI\_Q050: **In [reference year], would he have preferred to work more or less than he did?**

**In [reference year], would she have preferred to work more or less than she did?**

**In [reference year], would you have preferred to work more or less than you did?**

- |    |            |               |
|----|------------|---------------|
| 1. | More       | go to DI_Q055 |
| 2. | Less       | go to DI_Q060 |
| 8. | Refuse     | go to EN_C001 |
| 9. | Don't know | go to EN_C001 |

DI\_Q055: **Was it his condition that prevented him from working more?**

**Was it her condition that prevented her from working more?**

**Was it your condition that prevented you from working more?**

1. Yes
2. No
8. Refuse
9. Don't know

go to EN\_C001

DI\_Q060: **Was it because of his condition that he wanted to work less?**

**Was it because of her condition that she wanted to work less?**

**Was it because of your condition that you wanted to work less?**

1. Yes
2. No
8. Refuse
9. Don't know

go to EN\_C001

DI\_Q065: **Does his condition completely prevent him from working at a job or business or from looking for work?**

**Does her condition completely prevent her from working at a job or business or from looking for work?**

**Does your condition completely prevent you from working at a job or business or from looking for work?**

1. Yes
2. No
8. Refuse
9. Don't know

go to EN\_C001

## 5.8 EN Module

EN\_C001:

If Hhinfo.taxperm = 1, 4 or 5

go to CAI\_SO

If Hhinfo.taxperm = 2 or 0

go to EN\_R001

If Hhinfo.taxperm = 3 and Proxysex = nonproxy

go to EN\_Q005

Otherwise

go to EN\_R001

Taxperm = 0 wasn't asked permission

Taxperm = 1 has given permission

Taxperm = 2 has refused permission

Taxperm = 3 does not file a tax return

Taxperm = 4 withdrew permission

Taxperm = 5 refused Income but will do Labour

EN\_R001: **This survey also collects income information in May. [Respondent] can give us permission to use his tax records or we can interview him in May. If he gives permission he will be contacted only once a year in January.**

**This survey also collects income information in May. [Respondent] can give us permission to use her tax records or we can interview her in May. If she gives permission she will be contacted only once a year in January.**

**This survey also collects income information in May. You can give us permission to use your tax records or we can interview you in May. If you give permission you will be contacted only once a year in January.**

INTERVIEWER: Press <Enter> to continue.

go to EN\_Q010

EN\_Q005: **Based on the information recorded last year you didn't file a tax return for [reference year - 1]. Do you expect to file one for [reference year]?**

1. Yes
2. No
3. Error last year
8. Refuse
9. Don't know

If answered "Yes" or "Error last year" go to EN\_Q010  
If answered "No" set EN\_Q010 to 3  
"Does not file a tax return" and go to CAI\_SO  
Otherwise go to CAI\_SO

EN\_Q010: **Does he give Statistics Canada permission to use his tax records for this survey?**

**Does she give Statistics Canada permission to use her tax records for this survey?**

**Do you give Statistics Canada permission to use your tax records for this survey?**

1. Yes
2. No
3. Does not file a tax return
8. Refuse
9. Don't know

go to CAI\_SO

CAI\_SO: INTERVIEWER: This is the end of the component. Return to previously answered questions to make any necessary corrections or select <Exit> to exit the component.

1. Exit  
(Refuse or Don't know are not possible answers)