



# Programmer's Guide

This guide describes how to use the SPSM in glass box mode. Glass box mode allows users to add new variables and parameters to the SPSM as well as the ability to alter the SPSM algorithms or implement new algorithms. The Microsoft C++ compiler from Microsoft Visual Studio.net 2008 is required for using the glass box mode.



Statistics  
Canada      Statistique  
Canada

Canada

## Table of Contents

Introduction.....	1
Purpose of the Glass box Mode .....	1
Hardware and Software Requirements for the Glass box Mode.....	3
Programming Knowledge Required .....	4
Operating System Knowledge Required.....	4
Fundamental Programming Concepts (Not Language Specific) .....	4
Knowledge of the C Programming Language .....	4
Quick Start Example.....	5
Preliminaries .....	6
Changing the project environment.....	7
Adding Files to the Project .....	7
Changing the Alternative Driver Function (Adrv .cpp).....	10
Adding the new Earned Income Tax Credit (Agai .cpp).....	11
Testing the Resulting Alternative SPSM Model.....	14
Summary .....	17
SPSD/M and Glass Box Directory Structure .....	17
The SPSD Household/Individual Structure .....	19
The SPSD/M's Data Structure.....	19
Introduction to Pointers in the SPSD/M .....	20
The Bestiary .....	21
Examples of Looping:.....	21
References With Respect to an Individual:.....	23
Summary .....	24
SPSM Function Calling Structure.....	24
Glass Box Development: Adding Typical Scalar Parameters .....	26
General Procedure for Making Glass box Changes: A Recapitulation.....	26
Create Task Sub-directory .....	26
Identify Files to be Changed .....	27
Copy Relevant Files to Task Sub-directory .....	27
Edit Those Relevant Files .....	27
Compile the new version .....	27
Test the New Version of the Model.....	27
Carry Out the Intended Analysis.....	28
Introduction to Parameter Addition .....	28
Copy Files Adrv .cpp, Mpu .h, Ampd .cpp, Agai .cpp, SPSMGL .vcproj, SPSMGL .sln.....	29
Update the project.....	30
Update the Algorithm Description in Adrv .cpp .....	30
Modify Mpu .h to Define the new Parameters.....	30
Modify Ampd .cpp to Make the Parameters Available to the SPSM .....	31
Modify the Functions that Use the New Parameter(s).....	33
Validate and Make Black-Box Production Runs .....	35
Summary/Conclusion.....	36
Glass Box Development: Adding Less Typical Parameters .....	37

pmaddent: The Function and its Arguments .....	37
Characterizing Scalar Parameters .....	41
REAL/float/NUMBER Parameters .....	41
INTEGER/int Parameters .....	42
FLAG Parameters .....	42
FRACTION Parameters .....	42
OPTION Parameters .....	42
EDIT-FRACTION Parameters .....	42
DUMMY Parameters .....	43
Vectors of User-defined Parameters .....	43
Additions to Mpu.h, Cpu.h or Apu.h.....	43
Additions to Ampd.cpp .....	44
User-Defined Parameter Vector References in the Source Code .....	45
Specification of Parameter Vector Values .....	45
Summary .....	46
User-defined Schedules for Lookups.....	47
Schedule Types and Lookup Functions .....	47
Appearance in SPSM Header Files.....	48
Appearance in pmaddent Calls in Ampd.cpp.....	49
Employing Schedule References in User Code .....	49
Appearance in Parameter Files .....	50
Key Points for Adding Schedule Parameters.....	51
Adding Matrices of Parameters .....	51
Appearance in Mpu.h .....	52
Appearance in Ampd.cpp .....	53
Referencing Matrix Elements in Source Code.....	53
Appearance in Parameter Files .....	53
Summary/Conclusion.....	54
Glass Box Development: Adding New Variables .....	55
Overview for Adding Variables.....	56
Dependent Variable Types and Characteristics .....	56
The vardef and stradd Functions and their Arguments.....	57
Vardef "Name" Argument (and Definition of Variable "Stem" Name): .....	57
Vardef "Home Structure" Argument: .....	58
Vardef "Variable Location" Argument: .....	58
Vardef "C-Type" Argument (C_NUM & C_INT): .....	58
Vardef "Usage" (Type) Argument (V_ANAL & V_CLAS): .....	58
Stradd Calls for Numeric Analysis Variables:.....	59
Stradd Calls for Integer Analysis Variables: .....	59
Stradd Calls for Integer Classification Variables: .....	59
The Earned Income Tax Credit Example Extended .....	60
Changes to project files and Adrv.cpp .....	61
Changes to vsu.h .....	62
Changes to vsdu.cpp .....	62
Changes to Agai.cpp (Or, more generally, any new substantive source code).....	63

Identifying String .....	63
Local Variables .....	63
Calculate and Assign the New Model Variables .....	63
Changes to Amemo1 .cpp.....	65
Compilation.....	66
Validation.....	66
Summary/Conclusions .....	70
Changing Base and Variant Data Variables.....	71
Making Changes That Affect All Tax/Transfer Systems in a Model .....	71
Typical Income and Population Growth Changes Via API Files .....	72
Changes Involving New Logic For adju .cpp.....	73
Adding New Database Adjustment Parameters .....	73
A Worked Example.....	74
Checklist for Changing Database Variables "Globally" .....	78
Making Changes That Affect Only the Base or Only the Variant .....	79
Implementing Changes in Acall .cpp.....	80
A Worked Example.....	82
Checklist for System-Specific Database Changes .....	88

## Introduction

The *Programmer's Guide* describes how users can alter the SPSM in order to model tax/transfer systems or policy options not directly addressable by the SPSD/M as distributed; e.g. they might make an alteration to the logic of the tax/transfer system in order to assess the static distributional impacts that would result from a policy proposal.

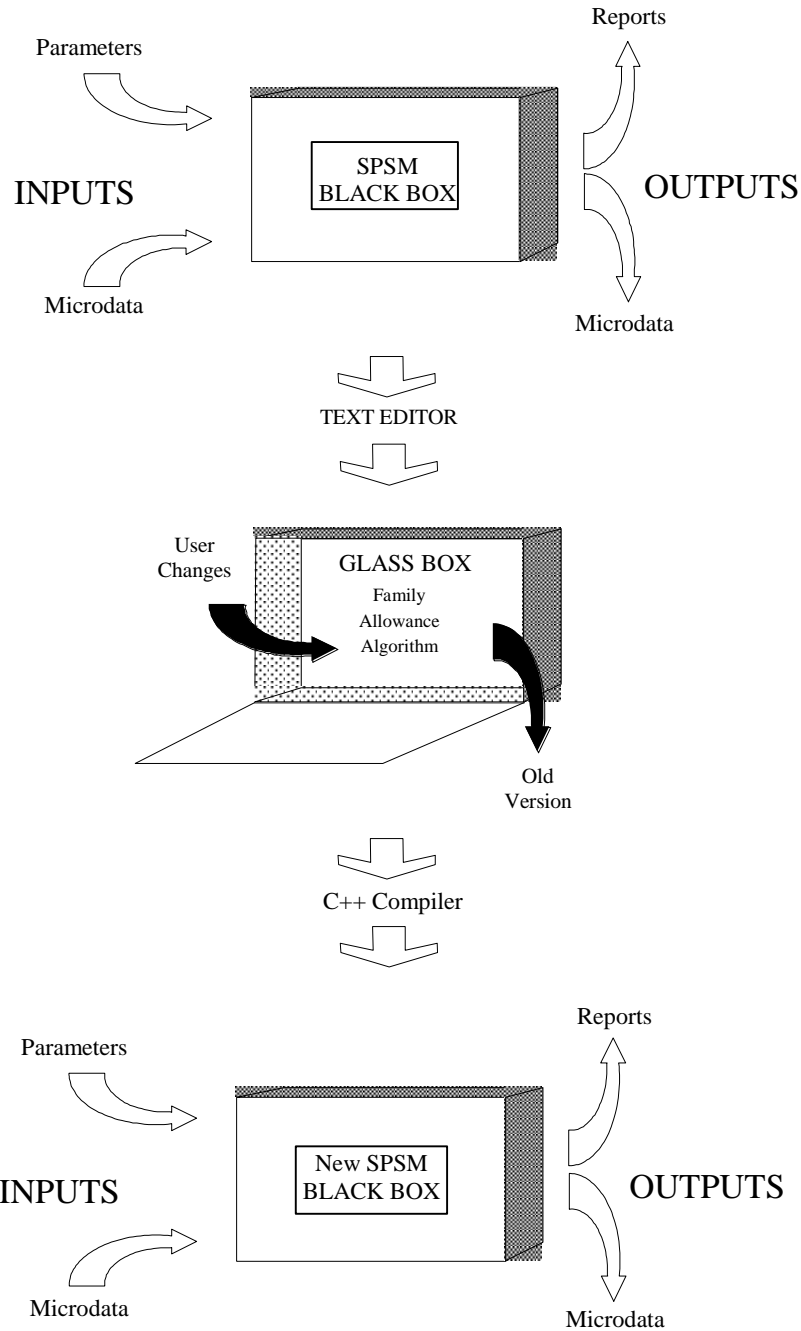
This chapter introduces a variety of preliminary topics critical for understanding the use of the SPSM in its glass box mode. Specific chapter topics include:

- (1) a description of the glass box mode, especially in contrast to the black box mode,
- (2) the hardware and software requirements for using the glass box mode,
- (3) the degree of programming knowledge required.

Subsequent sections in the guide then take up the details of actually developing glass box applications. Thus, the following section describes a "*Quick Start*" procedure that tests the success of the SPSM installation by effecting a simple glass box modification to the SPSM as distributed. The Section entitled *SPSD/M and Glass Box Directory Structure* characterizes the subdirectory structure relevant to the various aspects of glass box operations. The *SPSD Household/Individual Structure* provides critical details on the key SPSD data structures used by the SPSM. *SPSM Calling Structure* describes the calling structure of the SPSM modules that make up a specific model. *Glass Box Development: Adding Typical Scalar Parameters* addresses the mechanism for adding user-defined model parameters to an SPSM model, treating the most common forms of scalar parameters. *Glass Box Development: Adding Less Typical Parameters* then takes up the addition of less typical kinds of scalar parameters, as well as the addition of vectors and matrices of new model parameters. *Glass Box Development: Adding New Variables* describes the addition of new variables to a model. *Changing Base and Variant Data Variables* provides the definitive statement on managing standard and alternate algorithms within the context of glass box operations.

### **PURPOSE OF THE GLASS BOX MODE**

A simplified systems view of the process of simulating taxes and transfers may be as follows:



A user specifies a series of inputs (parameters and data) which are then processed through a system of algorithms (the Black Box) which in turn produces a system outputs (tables and microdata). The user may create many different simulations by varying the inputs and then analyzing the outputs. He may even deduce some of the contents of the black box through repeated testing. However, the simulations possible are limited by the contents of the black box. If, for example, the rules of the Goods and Services Tax are not included in the system of algorithms (with provisions for appropriate input data and parameters) then this program can not be simulated without actually opening up and changing the black box. This ability to look inside the black box and alter its contents is like turning the black box into a glass

box.

This guide explains how to use the SPSM in its glass box mode. Specifically, the term "glass box mode" refers to a method of modifying versions of the executable SPSM program to accomplish analyses that are not possible with the original, unmodified SPSM. Glass box mode may be used to add or modify parameters, variables, and algorithms. Using the "glass box" mode always entails altering the C++ Language source code and recompiling an executable version of the program. The "black box mode" refers to the subsequent execution of an executable version, either as shipped by Statistics Canada or as modified by user's in "glass box" mode. It is always through the black box mode that a user carries out a variety of policy relevant simulations via parameter changes, user variables, and tabulation expressions.

Because of the extra steps involved, users should attempt to avoid the glass box mode wherever possible. The SPSM provides a number of devices that enable analysts to achieve many desired results without re-programming. The most common technique is to alter the default sets of program parameters that drive the SPSM. The analyst could simulate the impact of an increase or abolition of Family Allowances by changing the numeric values of the relevant parameters. In a second example, the analyst can define their own variables in the control parameter file, and can use the resulting variables in a whole range of SPSM outputs. The *Introductory Guide* provides an extensive detailed example in which an analyst uses the user-defined variables to simulate an earned income tax credit. Similarly, the analyst can create variables "on-the-fly" as expressions and export or tabulate them just as if they had been full-fledged variables, and can conveniently represent differences between a given variable in the base and variant tax/transfer systems. The *XTab User's Guide* provides several examples of this type of on-the-fly definition.

The Glass box mode must be used under the following conditions:

- (1) Adding any new parameters.
- (2) Adding new variables that require reference to other specific family members.
- (3) New proposals which are designed to interact with the tax/transfer system. For example, a taxable newborn allowance.
- (4) New proposals that alter the logic of existing programs in ways that have not yet been parameterized.

When users need to make such changes in the SPSM to reflect alternative tax/transfers systems, they need to be familiar with the techniques described in this guide.

## **HARDWARE AND SOFTWARE REQUIREMENTS FOR THE GLASS BOX MODE**

The *Introduction and Overview* provides the definitive statement on hardware and software requirements.

The key aspects of software requirements are as follows:

1. Use of the SPSD/M in the glass box mode requires the availability of Visual C++ that serves to compile the user's C language source code statements into the machine language format required by the SPSM. For this version of the SPSM, you need Microsoft Visual

Studio .net 2008.

2. The SPSM itself requires an operating system compatible with the version of Visual C++.

## **PROGRAMMING KNOWLEDGE REQUIRED**

Because use of the SPSM in the glass box mode requires the user to do some programming, glass box user will have to be somewhat more knowledgeable than the typical black box user. This section characterizes the kinds of things that a glass box user will either have to know or be prepared to learn.

### **Operating System Knowledge Required**

Using a glass box model with classic SPSM requires that the user be fairly comfortable with a number of areas relating to the operating system. The user should be familiar with the concept of the DOS environment and with environment variables such as the PATH variable. Effective operation in the SPSM's glass box mode also requires that users be proficient with a number of DOS commands.

The Visual SPSD/M interface is capable of running glass box models. Users must indicate that an alternative code base is required in the Scenario Selection box and browse to the path of the executable glass box file. Once loaded, any new glass box parameters can be accessed on the hierarchy lists, the new user parameters will be in the final section in the hierarchy.

Refer to the *How to Run the SPSM* Guide for references to both Classic and Visual SPSM usage.

### **Fundamental Programming Concepts (Not Language Specific)**

The SPSM glass box is not the place to learn your first programming language. Users should be familiar with at least one high-level computer language prior to using the Glass-Box (e.g. JAVA, VB, SPSS, and SAS). Because glass box applications involve programming in a compiled language, it is desirable that glass box users come to the task already familiar with the key concepts. A user should be comfortable with the idea of using a text editor to write or revise source code, and with the idea of using a compiler to produce the desired executable file. The user will benefit from a familiarity with the notions of libraries, macros, modular programming and program validation.

More critically, a user's experience with these concepts should be applied. Preferably, before tackling SPSM glass box applications, a user should already have written and debugged several non-trivial computer programs, not necessarily using the C++ language. Although it may be possible for a user to learn to program by using the SPSM, we recommend against the attempt. For prospective SPSM users needing to build or reinforce basic programming skills, a wide variety of programming texts are available.

### **Knowledge of the C Programming Language**

The SPSM code base was originally written in C language and has since been ported to C++. References to programming language in this guide use C and C++ interchangeably. Current



glass box users must program in C++. Although the structure of the SPSM means that certain things like input/output are done for the user, the prospective user will be most efficient if the basics are previously understood. Users have to understand the purpose of defining constants and declaring variables, and must appreciate the scopes of these declarations. They must understand variables and variable types, specifically including pointer variables and structured variables, and how the C language uses them. They must understand the nature and structure of functions and the variety of statements that comprise them. They must be familiar with C's major flow of control statements (if-else, switch, while, for, do-while), as well as C's table of assignments and operators, including the increment operator. For users who have worked in other programming languages and are capable of absorbing this information in a concentrated form, Kernighan and Ritchie's book, "The C Programming Language" is the standard reference. Similarly, the C++ language manual that comes as part of the Microsoft C++ Optimizing Compiler is a very useful and authoritative source for information about C++ and its implementation.

Finally, of course, SPSM users must understand the basics of the Microsoft C++ Compiler. It is also necessary to understand the thrust of what is going on, and the various error messages that the compiler may give in response to the user's code. The authority on these topics is, of course, Microsoft's set of manuals for the C++ compiler.

## Quick Start Example

As its title suggests, this chapter provides the user with a quick start at using the SPSM in its glass box mode. The chapter serves three main functions. First, it allows the user to check the installation of the compiler and SPSD/M. If the user can carry out the chapter's simple example successfully, then all of the major portions of the installations were performed properly. Second, the example introduces key glass box concepts and terminology. Third, the example illustrates, in an integrated manner, the general flow of glass box applications.

The chapter's approach is primarily narrative. Taking the reader through all the steps of a simplified glass box application, it concentrates on the general approach. It describes the key details of the exercise, but does not attempt to be exhaustive. The particular illustration used here was selected for its simplicity; it addresses the most critical aspects of glass box applications, but doesn't get bogged down in the additional requirements associated with more ambitious applications.

To illustrate a relatively straightforward glass box application, we revisit an earlier example simulation used in black box mode, the introduction of a new Earned Income Tax Credit, originally outlined in Session 3 of the Example Simulations in the *Introduction and Overview* Guide. The basic design of the benefit is repeated below.

Eligibility:	Individuals aged 21 years or over are individually eligible if they reside in census families in which children under the age of 21 years are present.
Maximum Benefit:	Maximum benefits are \$1,200 for each eligible person.

- Income Test: Income testing will be based on the employment income of an individual plus the employment income of their spouse if present.
- Turning Points: Benefits begin with the first dollar of earned income. At \$8,000 dollars of employment income the benefits reach the maximum and continue at that level until \$12,000 of earned income where they begin to be reduced.
- Reduction Rates: 15% of earned income is payable as a benefit up to a maximum of \$1,200. After \$12,000 of earned family income maximum benefits are reduced by 10¢ for each additional dollar of earned income.

As regards the narrative, readers should not worry about the "whys" of the implementation. Subsequent sections in this *Programmer's Guide* will address all of them more fully. However, it is highly desirable that the user work through the example to the point of actually carrying out all of the tasks described. Only in this way can the first purpose, confirmation of the installation processes, be realized.

## PRELIMINARIES

The user should begin by selecting a subdirectory in which to work. This is the hard disk subdirectory in which the user will edit copies of the relevant C++ language source code files and describe the nature of the alternative system. **We strongly recommend that the user employ a directory other than those that the SPSD/M installation establishes for the SPSD/M itself.** The user can make a new subdirectory if necessary. For purposes of this narrative, we'll assume that a subdirectory named GLASSEX1 is available as the working subdirectory.

The user begins the process by copying, from the SPSD/M's GLASS subdirectory, to the GLASSEX1 work subdirectory, all of the relevant template files. Template files are files that already contain most of the necessary information for a glass box application, and which the user will modify to create the final versions necessary for the application. For this example, the relevant template files are as follows:

1. `Drv.cpp`, the alternate "driver" template that invokes all of the SPSM's tax/transfer functions in the correct order. This template, distributed as part of the SPSM, is effectively a duplicate of the base driver function (**the user should copy it in its working subdirectory**).
2. `Agai.cpp`, the alternate template that effects the computation of the new guarantees and refundable credits. This template, distributed as part of the SPSM, is a stub function for use by glass-box users who wish to incorporate a new program that does not affect current programs in the tax system (i.e. a new refundable tax credit). (**the user should copy it in its working subdirectory**).
3. `SPSMGL.sln` and `SPSMGL.vcproj` carry out the compilation and linking of the user's new model (**copy these files from /spsm/glass to your working subdirectory**).

For other glass box applications the user may also need to copy other tax/transfer templates and/or C language header files. In this example, however, the user does not need to alter

any of the header files because the new model creates no new variables and uses no new formal parameters.

The general procedure for our illustrative glass box application is straightforward.

Working on writable COPIES of `Adrv.cpp` and `Agai.cpp` we make the small number of changes as described below.

1. Then we open the solution `SPSMGL.sln` utility in Visual Studio.net.

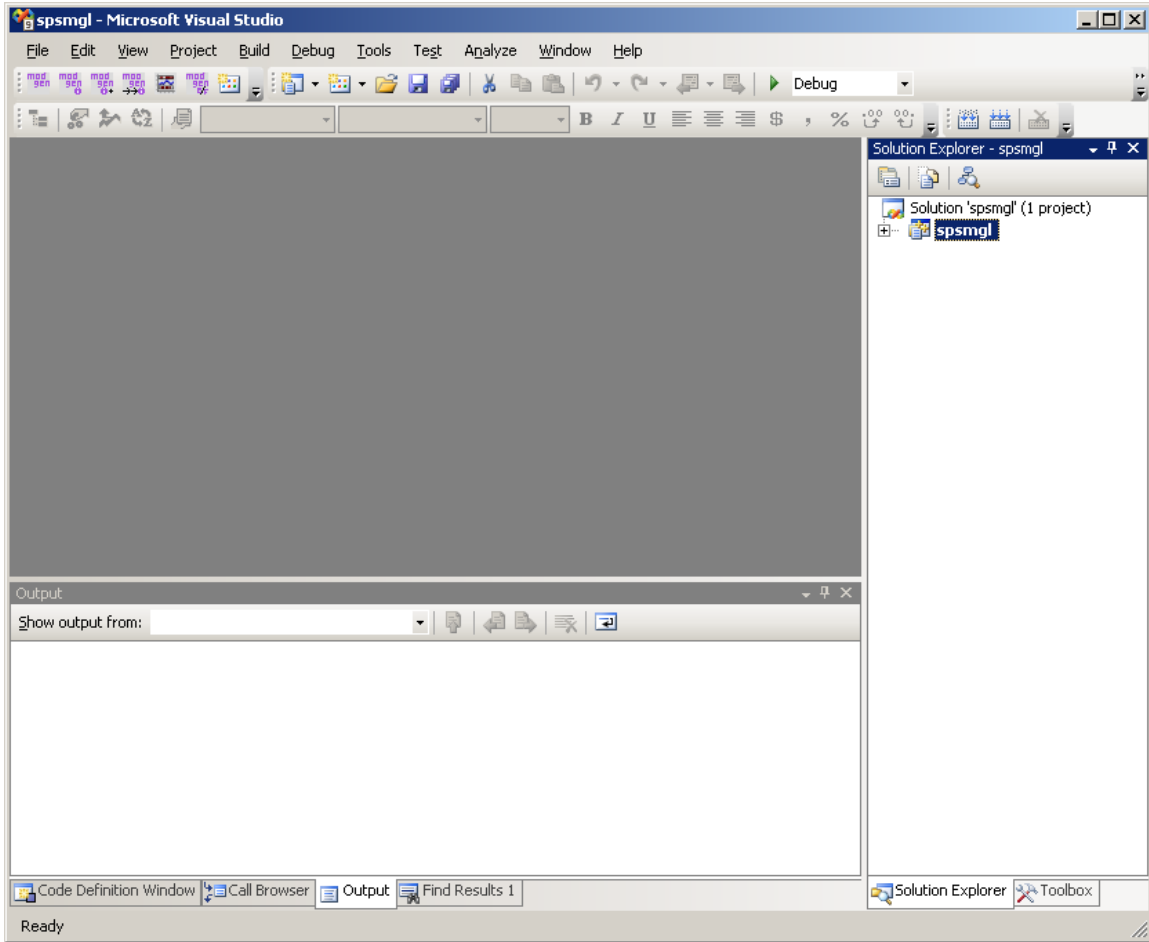
### **CHANGING THE PROJECT ENVIRONMENT**

The key subdirectory `\SPSM\DEFS` should all be added in **Tools: Options: Projects: VC++ Directories: Include files**, since definitions relevant to glass box applications reside there.

The key subdirectory `\SPSM\WIN32` should all be added in **Tools: Options: Projects: VC++ Directories: Library files**, since libraries relevant to glass box applications reside there.

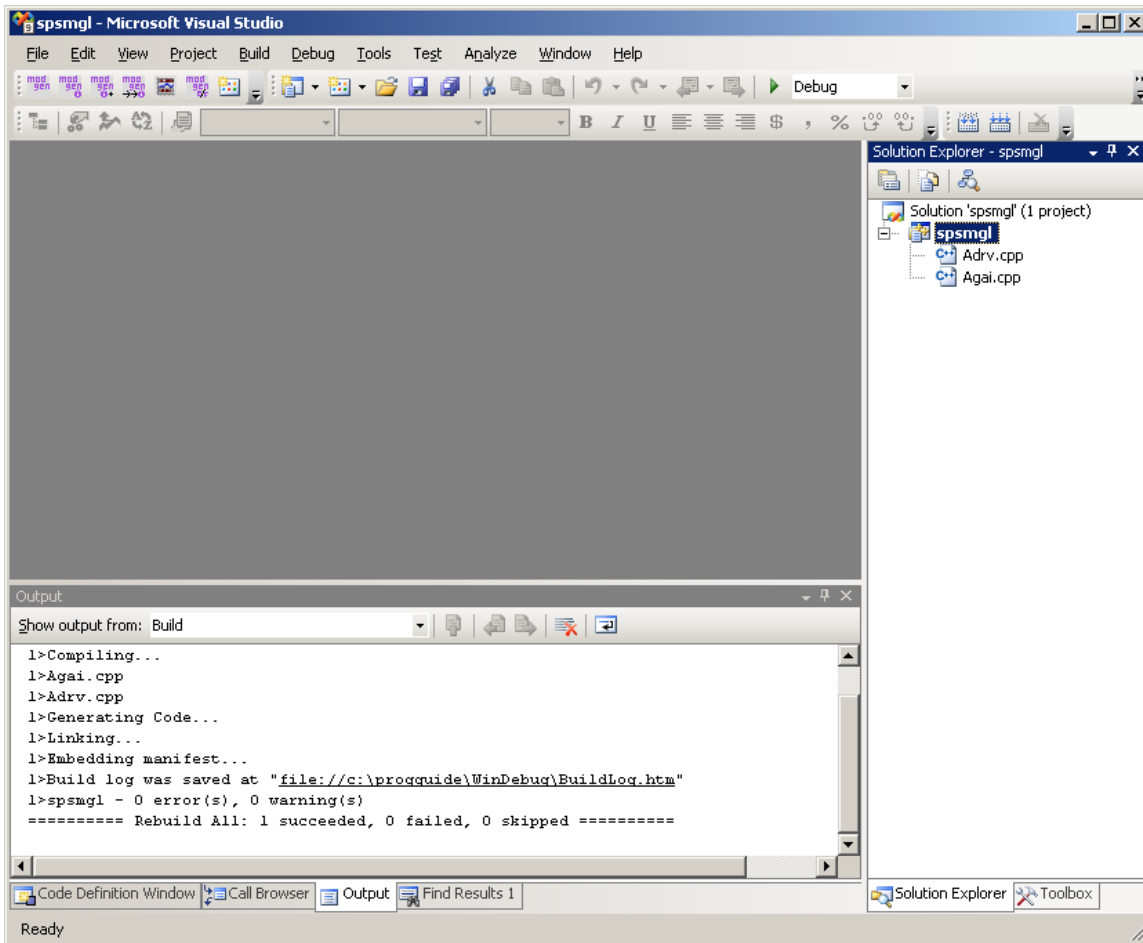
### **ADDING FILES TO THE PROJECT**

The first step in adding files to the project involves opening the solution file `spsmgl.exe` from the working directory. Doubling clicking on this file should result in the following screen display.



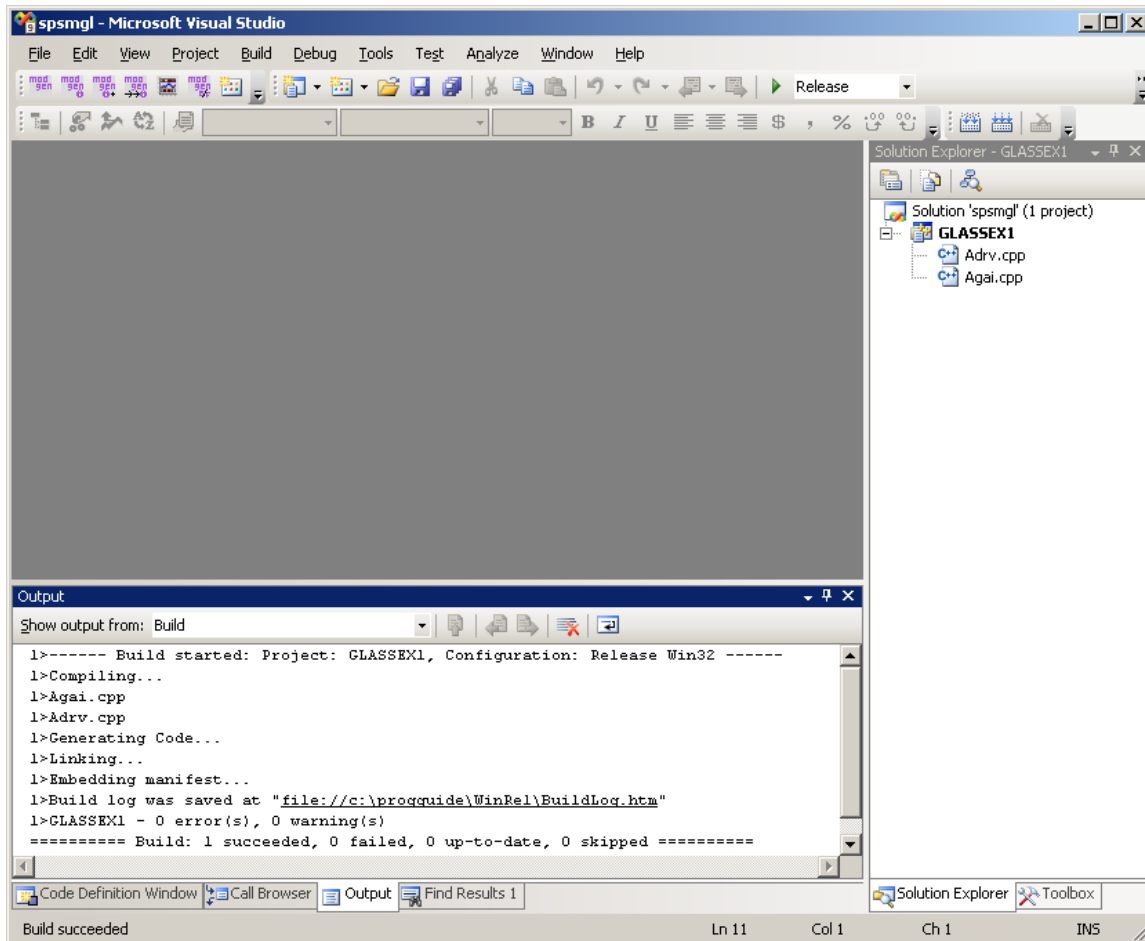
Before adding the selected files, make sure that the solution spsmg1 is highlighted (see the right hand panel in the above snapshot), and that the solution tab is selected on the bottom of the solution panel.

To add the files Adrv.cpp and Agai.cpp, select Project: Add Existing Item and navigate to the working directory and select the 2 files, then select Open.



If the files are added correctly, they should appear under the solution spsmg1 as per above. At this point users should build the model to ensure everything is working. This can be done using the drop down menu Build: Build spsmg1.

In this quick example, the name of the compiled model is modified from the default executable name of spsmg1 to glassex1. This can be accomplished by changing the solution properties found under the solution panel on the right hand side of the screen. Users should also ensure that the spsmg1 solution is highlighted. Then in the properties panel, next to the (Name) field, type in the new executable name, in this case GLASSEX1 and save the changes. Following this step, the build steps should represent the new executable name. Selection of the drop down Build menu item should represent the name change as per the next illustration.



## CHANGING THE ALTERNATIVE DRIVER FUNCTION (ADRV.CPP)

Adrv.cpp contains two kinds of information that the glass box user will want to alter. The first kind consists of labelling information that the SPSM uses in its reports and error messages. When the user makes appropriate changes here, the resulting output becomes more informative. The second kind consists of the function calls that effect the substance of the model's tax/transfer calculations.

The user makes the labelling changes in the portion of the code, starting at about line 79, that looks as follows:

```

===== GLOBAL VARIABLE DEFINITIONS ===== */
/*global*/ char ALTNAME[IDSIZE+1] = "Unnamed";
/* Give global string describing version of this module */
/*global*/ char FAR Tdrv[] = "Untitled"

```

**The ALTNAME[IDSIZE+1] string provides an identifying name for the alternative driver;** the user replaces the placeholder "Unnamed" with the more informative name "EITC Quick Start". The new name must not exceed 20 characters in length. This alternative name will then appear in the greeting screen. The Tdrv[] string provides a title for the alternative driver; the user replaces the placeholder "Untitled" with the more informative title "EITC Quick Start". The new title may not exceed 20 characters in length. TDRV's contents appear as information in the control parameter file as an algorithm description.

Upon completion of these substitutions, the revised "labelling section" appears as follows:

```
/* ===== GLOBAL VARIABLE DEFINITIONS ===== */
/*global*/ char ALTNAME[IDSIZE+1] = "EITC Quick Start";
/* Give global string describing version of this module */
/*global*/ char FAR Tdrv[] = "EITC Quick Start"
```

**In the substantive portion of the code, the user needs to make only a single change to indicate that the calculation of benefits for the variant system should use an alternate credit calculation.**

The relevant portion of the code, a single line appearing at about line 164, appears as follows:

```
gai(hh); /* compute new guarantees, refundable credits */
```

Unmodified, it invokes a function that simply assigns 0 to the variable `imiosa` for all members of the household. The user changes the line to invoke, instead, the alternative new credit calculation that we shall describe shortly. The modification consists solely in the substitution of the new function name, and the revised source code appears as follows:

```
Agai(hh); /* compute new guarantees, refundable credits */
```

For this quick start example, these three simple changes constitute the entire set of modifications for the `Adrv.cpp` function.

### **ADDING THE NEW EARNED INCOME TAX CREDIT (AGAI.CPP)**

The `Agai.cpp` function is designed for glass box users to add new programs that do not effect other programs in the current tax system for the alternative model. In a manner analogous to the `Adrv.cpp` changes, the user's changes fall into two categories, labelling changes and substantive changes.

The labelling change is very straightforward. At about line 48, the function provides for a title, `Tgai[]`, for the module, with the title being used in the report in which the SPSM indicates the functions used to calculate the taxes and transfers. As with the title for the driver, this title appears as an algorithm description in the control parameter file. The relevant portion of the code appears as follows:

```
===== GLOBAL VARIABLE DEFINITIONS ===== */
/* Give global string describing version of this module */
/*global*/ char FAR Tgai[] = "Untitled"
```

The user changes the "Untitled" string to something rather more informative. The resulting section then appears as follows:

```
===== GLOBAL VARIABLE DEFINITIONS ===== */
/* Give global string describing version of this module */
/*global*/ char FAR Tgai[] = "EITC Quick Start"
```

The substantive portion of the `Agai.cpp` changes is a bit more complicated, but not extremely so. This function contains a variable (`imiosa` – Other SA or guarantees) that is always 'zero' in black box mode, but can be used in 'glass box' algorithms to model new programs. The value of 'imiosa' is included in federal transfer programs (`imfran`) which is also included in disposable income (`immdisp`). This setup is handy for glass box users to model new programs for which the impacts on disposable income could be measured.

The `Agai.cpp` file contains a small household loop that initializes the value of `imiosa` to 0 for everyone.

```

register P_in in;
register int ini;

DEBUG_ON("Agai");

/* process persons in household */
for (ini=0, in=&hh->in[0]; ini<hh->hhnin; ini++, in++) {
    in->im.imiosa = ZERO;
}
DEBUG_OFF("Agai");

```

This block of code can be removed (or commented out) and replaced with the following.

```

register P_in in;
register int ini;
register P_in ineld;
register P_in inspo;
register P_cf cf;
register int cfi;
int nceitc;
NUMBER cfempinc;
NUMBER eitc;

DEBUG_ON("Agai");
/* process persons in household - currently commented out*/
/* for (ini=0, in=&hh->in[0]; ini<hh->hhnin; ini++, in++) {
    in->im.imiosa = ZERO;
}
*/

/* process each census family in household */
for (cfi=0, cf=&hh->cf[0]; cfi<hh->hhncf; cfi++, cf++) {
    /* initialise elder's pointer */
    ineld = cf->cfineld;

    /* calculate elder's contribution to family net income */
    cfempinc = ineld->id.idiemp;

    if (cf->cfspoflg) {
        DEBUG1("%s spouse present\n");
        inspo = cf->cfinspo;    /* spouse's in pointer */

        /* add spouse's net income to family net income */
        cfempinc += inspo->id.idiemp;
    }

    nceitc= 0;

    /* process children in census family */
    for (ini=0, in=cf->cfinch; ini<cf->cfnchild; ini++, in++) {

        if (in->id.idage >= 21) {

```



```

        DEBUG2("%s discarding old child, aged %d\n",
in->id.idage);
        continue;
    }

    /* Count up remaining children */
    nceitc++;
}

eitc = 0;
if (nceitc > 0 ) {
    if ( cfempinc < 8000 ) {
        eitc = .15 * cfempinc;
    }
    else if ( cfempinc <= 12000 ) {
        eitc = 1200;
    }
    else if ( cfempinc < 24000) {
        eitc = 1200 - ((cfempinc - 12000) * .10);
    }
    else {
        eitc = 0;
    }
}

/* process persons in census family */
for (ini=0, in=cf->cfin; ini<cf->cfnpers; ini++, in++) {

    if (in->id.idage > 20) {
        in->im.imiosa = eitc;
    }
}
}

DEBUG_OFF("Agai");

```

The basic logic of the code is to process each census family separately. First, the head of the census family is identified and the head's earned income is added to the temporary variable cfempinc (census family earned income). Next, it is determined if a spouse exists and if so, the spouse's earned income is added to cfempinc. Then a loop is necessary to go through the children in the census family and count up the number of children aged 0 to 20. Then for families where there is at least one child under the age of 21, the amount of the earned income benefit is calculated. For families with earned incomes of less than \$8000, the benefit would be equal to 15% of their earned incomes. Families with incomes greater than \$8000 but less than or equal to \$12,000 are assigned a maximum benefit amount of \$1200. Families with earned incomes greater than \$12,000 and less than \$24,000 get a reduced benefit equal to the maximum amount of \$1200 less 10% of their earned income in excess of \$12,000. Finally families with earned incomes in excess of \$24,000 are not entitled to the earned income tax credit and are thus assigned a value of 0. One more final loop through persons in a census family is performed to assign the family's value for the earned income tax credit to every person aged 21 or over in families with children under the age of 20.

With the completion of the changes to `Agai.cpp`, the user's real work in implementing the changes is now essentially done. All of the relevant substance and labelling changes are complete and, assuming there have been no errors during their entry, all that remains is the compilation of the new model and then its validation. Most important, though, it is the resulting executable file from C++ compile, in this example `GLASSEX1.EXE`, that the user runs to analyze the impacts of the change that was modeled.

## TESTING THE RESULTING ALTERNATIVE SPSM MODEL

Users have 2 options of running the glass box model.

1. Visual SPSM - The Visual interface is designed to read alternative model code – once the visual interface is opened and the user selects to run a new simulation, the user can then select the glass box option and browse to the subdirectory containing the glass box executable file. They can then also select to run a base and/or variant scenario using either the standard SPSM modules and/or the glass box model.
2. Classic SPSM – Users who are comfortable in classic SPSM use may run glass box models in much the same manner with a simple substitution of the executable model's name (and the directory path if necessary) in the batch file.

Users should refer to the [\*How to Run the SPSM Guide\*](#) for further details.

With all of the changes made, and the resulting files compiled and linked to create the new executable file, we are ready to test the new model. The two related goals of this step are:

1. to seek evidence about whether we have successfully made the desired change, and
2. to generate outputs that will help us diagnose errors should we have made any.

A very natural form of evidence takes the form of crosstabulations from a comparative run that uses the unmodified tax/transfer system as its base system and the modified form as its variant system. Later in this section we offer examples of two such crosstabulations.

In order to make the desired comparative run of the new model and get the output we need, we must alter the control parameters for the model. The [\*Parameter Guide\*](#) provides the authoritative description of SPSM control parameters; here we simply list the key parameter values for our purposes: (The "glassx1a" portion of the two file names is an acronym for "Glass box example 1, version a".)

```
OUTCPR glassx1a.cpr # Name of control parameter file (out)
VARALG EITC Quick Start # Name of variant algorithm
VARMETH 3 # Method of creating variant variables
BASMETH 2 # Method of creating base variables
OUTTBL glassx1a.tbl # Name of report file (out)
```

Note that it is extremely important to supply the control parameter to run the alternative algorithm by setting `VARMETH` to 3 if using classic SPSM.

A few tables will suffice for validation in this example:

1. tabulate the amount of EITC benefit, the number of gainers as defined as a positive change in disposable income between the base and variant scenarios, the number of individuals unaffected by the new benefit (no difference in base and variant disposable incomes) by age groupings to illustrate that the benefit is going to the right individuals, and
2. tabulate the average EITC benefit for gainers by employment income group to show that we are giving the new tax credit to only the right kinds of units, and
3. provide a similar tabulation as the first two by base disposable income grouping.

Using the analysis from the Session 3 Example, with a slight change as the variable imiosa is already included in disposable income, the UVAR statements for this validation will look as follows:

```

gainer = @immdisp > 0;
label(gainer) = "Received EITC Flag (Gainer)";
nochange = (@immdisp==0);
label(nochange)="Unaffected by EITC Flag";
agegrp=split(idage,20,64);
label(agegrp)="Age";
empigrp=split(idiemp,0,8000,12000,24000);
dispgrp=split(_immdisp,5000,10000,15000,20000,25000,
              30000,35000,40000,45000);
label(dispgrp)="Base disposable income group";

```

Note that the glass box results were produced using a previous version of the SPSM model.

The XTSPEC parameter to generate these tables will look as follows:

```

XTSPEC
IN:{imiosa, gainer:S=3, nochange:S=3} * agegrp+;
IN:empigrp+ * {imiosa, imiosa/gainer:L="Average Benefits",
              gainer:S=3, nochange:S=3};
IN:dispgrp+ * {imiosa, gainer:S=3, nochange:S=3, scfrecs};

```

The highlights of this request are as follows:

(Note that since the validation of results will be similar to the Session 3 Example in the [Introduction and Overview](#) Guide, the explanation of the tables here will be brief.)

1. The first table demonstrates that the program has been correctly implemented in the sense that no benefits are being paid to children aged 20 and under.
2. Table 2U illustrates that the tax credit is not paid out to persons with over \$24,000 in employment income as designed and that some individuals with no earned income do receive the credit as they are in an eligible census family (based on the presence of children) and that the head/spouse earned income is less than \$24,000.
3. The third table simply tabulates the distribution of EITC benefits over individuals by

disposable income group. Those individuals with high disposable incomes who receive the EITC amount have income from other sources than employment..

The tables that result when one executes the new GLASSEX1 model appear as follows:

Table 1U: Selected Quantities for Individuals by Age

Quantity	Min-20	21-64	65-Max	All
Other SA or guarantees (M)	0.0	804.1	3.7	807.9
Received EITC Flag (Gainer) (000)	0.0	1226.7	7.4	1234.0
Unaffected by EITC Flag (000)	8146.0	17946.5	4184.0	30276.6

Table 2U: Selected Quantities for Individuals by Wages & salaries Group

Wages & salaries Group	Other SA or guarantees (M)	Average Benefits	Received EITC Flag (Gainer) (000)	Unaffected by EITC Flag (000)
Min-0	201.0	641.2102	313.4	14751.3
1-8000	246.1	594.5951	413.9	3191.6
8001-12000	143.0	1006.2308	142.1	1073.4
12001-24000	214.6	597.1696	359.3	2556.5
24001-Max	3.2	608.0466	5.2	8703.8
All	807.9	654.6415	1234.0	30276.6

Table 3U: Selected Quantities for Individuals by Base disposable income group

Base disposable income group	Other SA or guarantees (M)	Received EITC Flag (Gainer) (000)	Unaffected by EITC Flag (000)	SLID Records
Min-5000	73.7	139.3	9226.9	19744
5001-10000	94.3	151.2	2547.6	5722
10001-15000	136.1	202.1	2987.8	7607
15001-20000	173.8	237.2	2987.4	8349
20001-25000	163.0	241.8	2440.6	6443
25001-30000	72.7	118.2	2309.0	5650
30001-35000	39.2	59.9	1888.1	4544
35001-40000	17.5	27.8	1421.2	3378
40001-45000	9.5	12.0	1041.9	2378
45001-Max	28.2	44.5	3426.1	7311
All	807.9	1234.0	30276.6	71126

We conclude from the values appearing in these tables that the changes made above have quite probably been successful in implementing our intentions.

The testing just described completes our quick start example. Because of the example's focus we have perhaps not been quite as careful and methodical as would be warranted in the case of a real application. Thus, we mention briefly here a number of things that we might have chosen to do in implementing our hypothetical change.

We might have added "revision history" comments to the files `Adrv.cpp` and `Agai.cpp` to document the nature of the changes and our reasons for implementing them as we did. This form of documentation is an element of sound professional practice for software development and maintenance.

We might have made a parameter out of the maximum earned income tax credit amount (\$1200) value, in case we wanted to repeat the analysis later for a different value of the Earned Income Tax Credit. Similarly, we might have made a parameter for the age restriction on children in the census family that determines the eligibility for the EITC amount. Also parameters for the rates and income turning points could have been made.

In general, the style of alteration and the degree of testing conducted here are appropriate for the limited goals of this introductory example. However, for a more serious glass box application the user will probably wish to be more methodical in making the necessary changes, devoting more attention to issues of documentation, labelling, validation and possibly to efficiency of computation.

## SUMMARY

This chapter has provided a first-pass description of glass box applications in the SPSM, illustrating them with a specific example. Section topics included changing the substantive calculations for a new Earned Income Tax Credit, altering the SPSM driver function that coordinates the calculation of taxes and transfers, and using the C++ compiler to create a new version of the model. A short section on validation illustrated the generation of tables to assess the success of the change.

## SPSD/M and Glass Box Directory Structure

An initial, general-level comment is in order -- **THE USER SHOULD NOT CHANGE ANYTHING IN ANY OF THESE SPSM SUBDIRECTORIES.** (1) Glass box applications will always involve working with **COPIES** of some of the files in these subdirectories. (2) All of the user's glass box work will be done in one of the **SEPARATE SUBDIRECTORIES** that the user has created to contain the working files for glass box applications.

**DEFS** This subdirectory contains a number of header files that define structures and constants used throughout the SPSM. Of greatest interest to the glass box user will be the `vs.h` file that defines the hierarchical data structure that

holds the SPSD/M's information about households and individuals. Recall, however, that the user will never have occasion to modify this structure. The user's addition of user-defined variables is accomplished via a COPY of the `vsu.h` file.

**EXAMPLE** This subdirectory contains various "INCLUDE" files that serve to specify parameters for the sample runs described in the tutorial portion of the *Introduction and Overview Guide*. Although they are potentially very useful in testing for the successful installation of the SPSM and in learning how to use models that have already been developed, these files are not directly relevant to the development of glass box models, and can be ignored for purposes of this glass box oriented discussion.

**GLASS** This subdirectory contains templates that the user will use as starting points for the code that s/he writes to create variant tax/transfer systems and models. (1) It contains the source code for all of the SPSM's tax and benefit functions; the user will probably find it most efficient to create any new functions by modifying COPIES of these elements. (2) It contains functions that make the user defined parameters and variables accessible to the broader SPSM, together with associated header files that define the relevant structures to hold the user-defined variables and parameters.

**MODEL** This subdirectory contains examples of the definitions of model variables and parameters. The elements in the subdirectory are intended ONLY to serve as concrete examples for the user when s/he begins to define new parameters and variables for glass box applications. The user will never have occasion to modify the contents of these files, nor even to use or alter copies of the files.

**WIN32** This subdirectory contains a small number of WINDOWS 32 bits "controlling object files" that govern the form of the overlay structure that the SPSM uses. At a very general level, these items are similar to those in LIB in the sense that `SPSMGL.sln` needs them and knows how to use them in the compilation of a new version of the model. It also contains some executable files used in the modification of SDS in a project.

For the Quick Start example, `ADRV.CPP` and `AGAI.CPP` are the C++ source code files copied from the `GLASS` subdirectory and then modified to reflect the desired new program logic; their `OBJ` counterparts are the object files produced as outputs when the ".CPP" files are compiled in `WINDEBUG` and `WINREL`. `GLASSEX1.EXE` and `GLASSEX1.ncb` were created by the compile command.

The critical information in this chapter can then be summarized as follows:

1. **No SPSM user should change ANYTHING in the SPSM subdirectory or in any of its subdirectories created during the SPSM installation.**
2. The glass box user will establish separate "task" subdirectories for glass box applications. Preferably these will not be subdirectories under SPSM.

3. **The glass box user will copy the relevant elements from the SPSM\GLASS directory, using them as templates for the changes to be made.** The changes themselves are then made to these COPIES. Subsequent sections in this *Programmer's Guide* indicate in considerable detail what the user must change and where the relevant templates are located.
4. The key subdirectories \SPSM\DEFS should all be added in **Tools: Options: Directory**, since definitions relevant to glass box applications reside there.

## The SPSD Household/Individual Structure

This chapter has three major goals, each of them developed in a separate section, but all of them relating to the general topic of the SPSD/M's data structures and their usage.

This following section provides a snapshot overview of the SPSM's framework for storing data about the household, its families, and their component individuals. An appreciation of this structure is crucial to the glass box user as he/she seeks to refer to or alter the values of existing data variables and modeled variables, and to create such new variables as would be necessary for a customized version of the SPSM.

The second section develops the use of pointer variables as a major tool by which the user accesses individual elements of the data. It also describes the major naming conventions relevant for glass box applications. These topics are relevant both for users building their own glass box applications, and those seeking to understand the standard SPSM algorithms. The underlying "philosophy" for this development is consistent with the rest of this guide -- in many respects it is considerably more important for the glass box user to know how, mechanically, to do something in a standardized, robust fashion, than to understand all of the design-oriented reasons behind the structures and techniques. In other words, the section's focus is determinedly practical; it concentrates much more on the mechanics of "how-to" than the niceties of "why".

The third section provides a "bestiary" of code fragments for performing common glass box tasks, particularly as regards to data structures. The idea is not only that the user should be able to copy an existing wheel rather than re-inventing it, but that the copied wheel should further exist in a standardized format, and not require debugging. The section's code fragments include (a) processing relevant individuals/families via "for" statements, (b) referring to other family members, (c) accessing existing database and modeled variables, and (d) assigning new values to variables.

### THE SPSD/M'S DATA STRUCTURE

The SPSD is a file whose order is fixed. It cannot be sorted by the user. The sort order of the database is critical to understand when attempting to loop through households. The database is clustered into households that are randomly sorted in a stratified way. Each individual household is then sorted as follows:

Household

## Economic Families

### Census Families

#### Nuclear Families

##### Head of Family

##### Spouse if present

##### Youngest Child to Oldest Child

Within a household, individuals are grouped into economic families. Within an economic family, individuals are grouped into census families. Within the census family, individuals are grouped into nuclear families. Within the nuclear family, the head is always first followed by the spouse if present. Children then follow sorted according to their age.

An entire household is loaded into the data structure specified above. Loops may then be established to process any of the units of analysis within a household.

Detailed descriptions of the substance of individual SPSP/M variables themselves appear in the *Variable Guide*. Much of the detail with respect to the content of the several structures can be found in `vs.h`. The key items required to define variables can be found in `spsm.h`. Some of the macros allow the user to do things symbolically to make their meanings clearer, or for consistency in numerical precision:

```
#define LOGICAL int      /* type used to store true or false values      */
#define TRUE 1          /* manifest constants to make code more readable */
#define FALSE 0
#define NUMBER float
#define ZERO (float) 0.0
#define HALF (float) 0.5
#define ONE (float) 1.0
#define THOUSAND (float) 1000.0
#define MILLION (float) 1000000.0
```

## **INTRODUCTION TO POINTERS IN THE SPSP/M**

The `uv` structure is one whose contents are defined by the user, in terms of both substance and variable names. A chapter describes how the user creates new variables, e.g. defining a new tax or transfer program. The user controls the substance of "uv" via the `vsu.h` header file, and the `vsdu.cpp` file, but can alter the values of the defined elements themselves anywhere inside `Adrv.cpp`. These definitional and assignment capacities are the essence of glass box applications when the user needs to add new variables. Of course the user must be careful to give any new variable/tax to the right individual(s) so that roll-ups will work properly throughout the remainder of the SPSM.

The C++ language makes heavy use of pointer variables, i.e. variables that point to a particular area of memory, and especially to a specific data structure. Although the portions of the SPSM's source code dealing with tax/transfer algorithms make less use of pointers and pointer arithmetic than those portions closed to the user, the glass box user will still have to



employ pointers. Even though the usage of pointers is essential, the design of the SPSM has made it as simple as the designers could manage. A variety of macros and code fragments are provided to make the pointer usage as simple and often as mechanical as was feasible. The Bestiary section briefly shows how these pointers are applied for typical glass box tasks such as looping and referencing. Note, however, that this section is in no way intended to provide a comprehensive course in pointer usage more generally outside the SPSM.

## THE BESTIARY

A bestiary is a "collection of descriptions of real or imaginary animals". The particular "animals" collected and described here are real. They are fragments of C++ language source code likely to be useful to the glass box user as s/he reads and writes the code for tax/transfer programs. The code fragments described here are all included in the code base for the SPSM algorithms (found in the GLASS directory) so that the user can copy the segments without having to retype them.

The elements of the bestiary are provided in support of a philosophy emphasized throughout this guide. More precisely, users should not have to reinvent the wheel, but should be given every assistance in taking advantage of things that already exist within the SPSM. Being able to copy existing code, perhaps modifying it in the process, provides four major advantages.

1. The existing source code is known to be correct, and thus doesn't have to be debugged.
2. There will be greater consistency between the user's code and that of the distributed SPSM.
3. Copying is much faster than re-entry.
4. The user can often get the needed job done, safely, without having to understand all of the underlying detail. The general format used is that of a heading, followed by the code itself, and, sometimes, a short comment or explanation.

### Examples of Looping:

One of the most common tasks in reading, modifying or writing code is looping through the relevant units in a household or one of its substructures. The following set of code segments probably come close to being exhaustive as regards the looping required by the user. Note that the source code segments include the relevant definitions required. E.g. in the first example below, the user must declare the pointer 'in' of type 'P\_in,' and the integer, 'ini' so that they can be used in the operation of the loop. In practice, the definitions will appear in the source code prior to the loop itself.

```
/** * PROCESS ALL INDIVIDUALS IN HOUSEHOLD hh */  
  
register P_in in;  
int ini;  
  
for (ini=0, in=&hh->in[0]; ini<hh->hhnin; ini++, in++) {  
    DEBUG2("%s processing individual %d in household\n", ini);  
    /* code here, using pointer 'in' */  
}
```

In the preceding loop, and the others that follow, the C++ 'for' statement is used. Items before the initial semicolon initialize variables for the looping. The condition between the two semicolons specifies when the loop is to continue. The items still within the parentheses, but after the second semicolon specify the incrementing necessary for the next iteration. Also included in the code fragment is a 'code here' comment. It indicates where the SPSM's code, or the user's code, should go to act on the unit through which the loop cycles. The 'code here' comment also identifies that unit in terms of the pointer that the loop controls.

```

/** PROCESS ALL INDIVIDUALS IN ECONOMIC FAMILY ef    */

register P_in in;
int ini;      for (ini=0, in=ef->efin; ini<ef->efnpers; ini++, in++) {
DEBUG2("%s processing individual %d in economic family\n", ini);
/* code here, using pointer 'in' */
}

/** PROCESS ALL INDIVIDUALS IN CENSUS FAMILY cf      */

register P_in in;
int ini;
for (ini=0, in=cf->cfin; ini<cf->cfnpers; ini++, in++) {
DEBUG2("%s processing individual %d in census family\n", ini);
/* code here, using pointer 'in' */
}

/** PROCESS ALL CHILDREN (including 18+) IN CENSUS FAMILY cf    */

register P_in in;
int ini;
for (ini=0, in=cf->cfinch; ini<cf->cfnchild; ini++, in++) {
DEBUG2("%s processing child (including 18+) %d in census family\n", ini);
/* code here, using pointer 'in' */
}

/** PROCESS YOUNG CHILDREN IN CENSUS FAMILY cf      */

register P_in in;
int ini;
for (ini=0, in=cf->cfinch; ini<cf->cfnkids; ini++, in++) {
DEBUG2("%s processing child (<18) %d in census family\n", ini);
/* code here, using pointer 'in' */
}

/** PROCESS ALL INDIVIDUALS IN NUCLEAR FAMILY nf    */

register P_in in;
int ini;
for (ini=0, in=nf->nfin; ini<nf->nfnpers; ini++, in++) {
DEBUG2("%s processing individual %d in nuclear family\n", ini);
/* code here, using pointer 'in' */
}

/** PROCESS CHILDREN IN NUCLEAR FAMILY nf          */

register P_in in;
int ini;
for (ini=0, in=nf->nfinch; ini<nf->nfnkids; ini++, in++) {
DEBUG2("%s processing child %d in nuclear family\n", ini);
/* code here, using pointer 'in' */
}

```

```

}

/** PROCESS ALL ECONOMIC FAMILIES IN HOUSEHOLD hh    **/

P_ef ef;
int efi;
for (efi=0, ef=&hh->ef[0]; efi<hh->hhnef; efi++, ef++) {
DEBUG2("%s processing economic family %d\n", efi);
/* code here, using pointer 'ef' */
}

/** PROCESS ALL CENSUS FAMILIES IN HOUSEHOLD hh    **/

P_cf cf;
int cfi;
for (cfi=0, cf=&hh->cf[0]; cfi<hh->hhncf; cfi++, cf++) {
DEBUG2("%s processing census family %d\n", cfi);
/* code here, using pointer 'cf' */
}

/** PROCESS ALL NUCLEAR FAMILIES IN HOUSEHOLD hh    **/

P_nf nf;
int nfi;
for (nfi=0, nf=&hh->nf[0]; nfi<hh->hhnnf; nfi++, nf++) {
DEBUG2("%s processing nuclear family %d\n", nfi);
/* code here, using pointer 'nf' */
}

```

### References With Respect to an Individual:

Another common glass box task involves referring to other individuals in a structure or substructure, or to units of analysis "higher up" in the structure. It is via such references that the user can refer to characteristics such as the province of residence for an individual, the income of the spouse of the eldest member of a census family (if that spouse exists), or the age of the second oldest child living in any of the census families within a common economic family.

```

/** REFERENCE SPOUSE OF INDIVIDUAL in    **/

if (in->id.idspoflg) {
P_in inspo;
inspo = in->id.idinspo;
/* code here, using pointer 'inspo' */
}

```

Notice here that there will not always exist a spouse.

```

/** REFERENCE HOUSEHOLD OF INDIVIDUAL in    **/

P_hh hh;
hh = in->id.idhh;
/* code here, using pointer 'hh' */

```

With the pointer to the household retrieved, the user then has access to household

characteristics such as province of residence. In contrast to the situation with the spouse of an individual, the household will always exist.

```
/** REFERENCE ECONOMIC FAMILY OF INDIVIDUAL in **/  
P_ef ef;  
ef = in->id.idef;  
/* code here, using pointer 'ef' */
```

Similarly, the individual's economic family will always exist, and will be relevant for ascertaining whether the individual lives in a below - LICO unit.

```
/** REFERENCE CENSUS FAMILY OF INDIVIDUAL in **/  
P_cf cf;  
cf = in->id.idcf;  
/* code here, using pointer 'cf' */  
/** REFERENCE NUCLEAR FAMILY OF INDIVIDUAL in **/  
P_nf nf;  
nf = in->id.idnf;  
/* code here, using pointer 'nf' */
```

These key references, coupled with the looping fragments of the previous section, permit the user to do, relatively conveniently, almost anything likely to be needed for tax/transfer simulation.

## SUMMARY

The first part of this chapter described the data structure used for SPSD/M. That part also identified the most important manifest constants and function macros the user will encounter in the SPSM's source code. The later portions described the role of pointer variables in the SPSM and characterized the major pointer types used. They concluded with a bestiary of code fragments for common glass box tasks, looping through individuals and family units, and referring to an individual's spouse or to the units of analysis that contain him/her.

The next chapter builds on this foundation by describing how the SPSM processes households in terms of calculating taxes and transfers. That description is in turn a foundation for the later chapters that indicate how to add user-defined parameters and variables in the course of modifying the logic of the tax/transfer system.

## SPSM Function Calling Structure

The calculation of taxes and cash transfers for a household is controlled by a function whose only task is to call all other individual tax/transfer algorithm functions. The sequence of calls is critical to the simulation due to the informational requirements of the tax/transfer functions. For example, net income must be known before GIS can be calculated. The following list gives the functions called by `drv` and `adrv` in the order in which they are called.

Function	Description
<code>ui(hh)</code>	Compute Employment Insurance benefit
<code>famod(hh)</code>	Compute family allowances
<code>oas(hh)</code>	Compute old age security

dem(hh)	Compute new demogrants
txinet(hh)	Compute net income
gis(hh)	Compute guaranteed income supplement for elderly
gist(hh)	Compute provincial elderly top-ups
samod(hh)	Compute social assistance
txitax(hh)	Compute taxable income
txhstr(hh)	Compute child & spouse deductions
txcalc(hh)	Compute federal tax
txctc(hh)	Compute child tax credit
txfstc(hh)	Compute federal sales tax credit
txprov(hh)	Compute provincial taxes and credits
gai(hh)	Compute new guarantees, refundable credits
memo1(hh)	Compute disposable income, etc.
ctmod(hh)	Compute commodity taxes and allocate to persons
memo2(hh)	Compute consumable income, etc.
cceopt(hh, drv)	Zero CCE for young kids if optimal
classu(hh)	Compute user-defined reporting variables

The calling order of the component functions of `drv` reflects the logical precedence between them.

- The first functions, `ui`, `famod` and `oas`, simulate programs whose benefits are determined by factors other than income and as such are called first.
- `dem` is a stub routine for glass box applications that require calculations to occur before entering the tax system routines.
- `txinet` calculates net income prior to certain transfers.
- `gis` calculates transfers to the elderly.
- `samod` calculates social assistance or guaranteed income transfers.
- Federal and provincial taxes are calculated next in the next four functions with the `tx` prefix (`txitax`, `txhstr`, `txcalc`, and `txprov`).
- `gist`, `txctc`, and `txfstc` calculate income tested transfer programs.
- `gai` is another stub routine that is intended for use by glass box users who wish to simulate options requiring information on all personal income taxes and cash transfers. For example, users may use this function to simulate an income supplementation program.
- The `memo1` and `memo2` functions create aggregate variables for reporting.
- In the `ctmod` function, sales and excise taxes are calculated by applying Input/Output based effective sales tax rates to observed family expenditures.
- `cceopt` optimizes income by maximizing the childcare expense credit and the child tax credit.
- `classu` is a stub routine that allows the glass box user to compute and assign values to new or re-defined variables.

The functions called by `drv` call other functions and sub-functions in order to complete their calculations. Please refer to the specific function in the [Algorithm Guide](#) for a more detailed description. Sub-functions can be found listed under the function that calls them. Thus for a complete understanding of the calculation of net income one would have to consult both the

txinet and txceca functions.

Sub-functions are defined within the function (file) that calls them. The following example is a call of a sub-function uiclm() in ui.cpp where uiclm is defined in a section of ui.cpp.

```
valid_claim = uiclm(in, &in->id.ucl, in->id.ucl.ucyl, &in->im.ubl,  
                  hh->hd.hdprov, hh->hd.hdurb, wctb, in->id.ucl.ucstart);
```

## Glass Box Development: Adding Typical Scalar Parameters

As its title suggests, this chapter explains to the glass box user the mechanics of the programming tasks associated with adding typical scalar parameters during the development of glass box applications. Structurally, the chapter communicates this information via a detailed worked example. The first section reviews the general procedure for developing glass box applications, describing the steps that are fundamental to any model alteration, be it changing code, adding parameters or adding variables. The second section takes up several preliminaries to parameter addition. It also describes the nature of the example to be used, an introduction of a Earned Income Tax Credit example used in this Guide's Quick Start Chapter. The remaining sections then use the example to explain in detail the steps involved in adding the most common kinds of scalar parameters to a model. Finally, the last section summarizes the key points regarding the addition to a model of these common forms of parameters.

### **GENERAL PROCEDURE FOR MAKING GLASS BOX CHANGES: A RECAPITULATION**

The previous section has already described the general procedure for developing glass box applications, including the reasoning behind the steps. We summarize the key points here in capsule form.

- Create Task Sub-directory
- Identify Files to be Changed
- Copy relevant Files to Task Sub-directory and remove the 'read only' properties
- Edit Relevant Files
- Compile the new version
- Test the New Version of the Model
- Carry Out the Intended Analysis

#### **Create Task Sub-directory**

The user creates a new "task subdirectory" to hold the files relevant for the new glass box application. She/he will edit files in the task subdirectory, leaving all of the other SPSD/M files alone.

## Identify Files to be Changed

The user identifies those files in `c:\spsm\glass` for which variants will have to be created. For example, in the Quick Start example, we identified `Agai.cpp`, `Adrv.cpp`, `SPSMGL.vcproj` and `SPSMGL.sln`. The example appearing in this chapter indicates how other files, e.g. `Mpu.h` and `Ampd.cpp`, are relevant to adding new parameters to a glass box application. A section will explain how still other files, `Vsu.h` and `Vsdu.cpp`, are relevant when the user wishes to add new variables to a model. Clearly, the tax/transfer function files that use the new parameters must also be changed. At times, the user may find it more efficient to use files already developed in a previous application as templates, rather than going all the way back to the glass subdirectory's template files.

## Copy Relevant Files to Task Sub-directory

The user copies all of the identified-relevant files across to the task subdirectory. The user will work only with these copies, leaving the originals unchanged. The user will have to remove the 'read only' property from the files in the working sub-directory to allow them to be edited.

## Edit Those Relevant Files

The user makes appropriate changes in each of the files identified as relevant. We recommend that the changes be made in the following order:

1. Include all relevant files into the project and change the output file name in Project: Setting: Link.
2. Edit the `Adrv.cpp` file, as necessary.
3. Edit the `Mpu.h` and `Ampd.cpp` files, when appropriate, to add any new parameters to the model.
4. Edit the `Vsu.h` and `Vsdu.cpp` files, when appropriate, to add any new output variables to the model.
5. Edit the source code files to add the desired new substantive logic to the tax/transfer system.

We shall follow this prescribed order in the examples we present in this and subsequent sections.

## Compile the new version

The user should activate the Debugging setting in Build: Set Active Configuration and then run a debug execution of the project. When the program changes are properly implemented then the new model should be compiled.

## Test the New Version of the Model

The user tests the new version via a set of validation analyses designed to reveal any

problems with the logic that has been added or modified. This step may require going back to some of the earlier ones to remedy any deficiencies that are discovered.

### **Carry Out the Intended Analysis**

Finally, once the validation is complete, the user can proceed with "production runs" of the new executable code to simulate the consequences of the change that was modeled.

## **INTRODUCTION TO PARAMETER ADDITION**

This section takes up a few critical preliminaries to the procedure for adding typical scalar parameters. First, it illustrates why a user might wish to add one or more parameters to a model. In addition, it describes the substance of the new parameters we use to illustrate the addition of typical parameters.

As noted at the end of the Quick Start example, our hypothetical analyst there took a few shortcuts that might be done differently in a real-world policy development exercise, especially if the new model was intended to be used repeatedly or by multiple analysts. One of these shortcuts was to "hardwire" the tax credit and income levels for the Earned Income Tax Credit in `Agai.cpp` function. Although this might be acceptable if the user would never want to try another value for the benefit amount, it is not particularly efficient should there be any interest in examining the impacts of other values. The user would need to re-edit the code and then to recompile the model for each separate value to be examined; the user might, for example, seek to confirm a belief that the impacts are generally proportional to the amount of the benefit, and wish to try multiple values by way of investigation. With appropriate parameters added to the model, no additional editing is required, and the user can investigate multiple values without re-compilation by simply supplying new parameter values to the modified model.

Consequently, several sections in this chapter describe the steps necessary to add new parameters to the model, cleaning up the Quick Start example by way of a specific illustration. This chapter restricts itself to the most commonly used forms of scalar parameters. We believe that the kinds of additions described here will meet perhaps 80% of the parameter addition needs of glass box users. We leave the definition of more esoteric scalar parameters, and of vectors and matrices of parameters, to the last sections. Whatever the type of new parameters, once added to a model, they are available to all functions called by `Adrv.cpp`; they are not restricted to the function for any single transfer program.

Substantively, we shall add seven parameters to a variant of the Quick Start model. These additions correspond to the three most common forms of parameters that glass box users will have occasion to use.

1. The first type of parameters, scalar "float" or "real" value, will provide the value of the maximum Earned Income Tax Credit amount, the income thresholds that define the design of the credit and the phase-in and phase-out rates used in the calculation of the credit. We'll call these:

EITCMAX – Earned Income Tax Credit Maximum Amount



EITCPIR – Earned Income Tax Credit Phase In Rate

EITCPOR – Earned Income Tax Credit Phase Out Rate

EITCTPMX – EITC Income Turning Point for Maximum Credit

EITCTPRC – EITC Income Turning Point for Reduced Credit

2. The second parameter, a scalar integer value, will indicate the age eligibility of children in the census family and will eliminate the hardwired '20' used in the Quick Start example. We'll call this parameter `EITCAGE` (Earned Income Tax Credit Child Age for Census Family Eligibility).
3. The third parameter, a "flag" variable that is effectively a boolean switch, will indicate whether any attention is to be paid to the first two parameters. In this, its function parallels that of the many "flag" variables used throughout the SPSM. When turned "on" it will enable the computation of the tax credit; when turned "off" the model will ignore any calculations related to the new EITC. We'll call this parameter `EITCFLAG` (Earned Income Tax Credit Activation Flag).

Our description assumes that the user has chosen to use `\glassex2` as the task directory, creating it if necessary.

**COPY FILES `ADRV.CPP`, `MPU.H`, `AMPD.CPP`, `AGAI.CPP`, `SPSMGL.VCPROJ`,  
`SPSMGL.SLN`**

The user copies to the new task subdirectory all of the files for which changes are required. Similarly, the user will wish to modify `Adrv.cpp` to update the description used for the substantive files (here only `Agai.cpp`) being changed. Thus, `Adrv.cpp` needs to be copied.

Two other files, `Mpu.h` and `Ampd.cpp`, are always relevant when the user wishes to add a new model parameter. `Mpu.h` (Model Parameters, User) is a C language header file that defines the nature of the new parameter. `Ampd.cpp` (Alternate Model Parameter Definitions) contains the function invocations that make the user's parameters known throughout the rest of the SPSM, e.g. so that they can be referenced by name for purposes of changing values "on the fly" when the user executes an SPSM executable file.

The user must copy these `Mpu.h` and `Ampd.cpp` files across from the glass subdirectory. If, for example, the user has already, elsewhere, modified these files to define other parameters, and wishes to retain those previous modifications, s/he can copy templates for `Mpu.h` and `Ampd.cpp` from the subdirectory in which they exist. By the term "templates" we refer to existing files, or pieces of text or code, that serve as a convenient starting point for making any desired modifications. For example, it would make no sense at all for the user to enter, from scratch, completely new versions of the relevant files. In this example,

we'll assume that these are the first parameters being added, and will copy the templates from glass.

Finally of course, the user must copy the substantive tax/transfer function or functions that will use the new parameter. For our purposes the only relevant substantive function is the `Agai.cpp` function. Rather than copying it from glass and then having to start from scratch, we'll copy it from `glassex1` so that some of our work is already done, e.g. locating where the assignment of the increment should be made.

**The user will have to copy `SPSMGL.vcproj` and `SPSMGL.sln` that describes the project environment.**

## UPDATE THE PROJECT

All the required files should be included in the project and the name of the output executable changed in Project: Properties: Configuration Properties: Linker: General: Output File to `glassex2.exe`.

## UPDATE THE ALGORITHM DESCRIPTION IN `ADRV.CPP`

Recall from the Quick Start example that the `altname[]` and `Tdrv[]` global variables received new values to reflect and document the nature of the changes to be made. Here, with a new version of the model being created, a corresponding substitution is in order. The two substitutions, consisting exclusively of the contents of the two strings, result in the following code:

```
===== GLOBAL VARIABLE DEFINITIONS ===== */
/*global*/ char ALTNAME[IDSIZE+1] = "Parameterized EITC";
/* Give global string describing version of this module */
/*global*/ char FAR Tdrv[] = "Parameterized EITC"
```

## MODIFY `MPU.H` TO DEFINE THE NEW PARAMETERS

The user next needs to change the file `Mpu.h` to define the type of the new parameters. When the change is made in the glass version of `Mpu.h`, the line containing the string "UMDUMMY" is replaced with definitions of the new parameter(s). The name "UMDUMMY" refers to "User Model Dummy parameter." We're calling the first new parameter `EITCMAX` to indicate that it is the maximum amount of the Earned Income Tax Credit. Before the change the indicated line (about line 77) reads:

```
int UMDUMMY;          /* dummy entry      */
```

Because, as the label indicates, this entry is only a placeholder, dummy, entry so that the SPSM will have something to work with if the user has not yet defined any user parameters, we delete this line completely. We replace it with the lines:

```
NUMBER EITCMAX;      /* Earned Income Tax Credit Maximum Amount */
NUMBER EITCPIR;      /* Earned Income Tax Credit Phase In Rate   */
NUMBER EITCPOR;      /* Earned Income Tax Credit Phase Out Rate  */
NUMBER EITCTPMX;     /* EITC Turning Point for Maximum Credit */
NUMBER EITCTPRC;     /* EITC Turning Point for Reduced Credit */
int EITCAGE;         /* Earned Income Tax Credit Child Age for Census Family Eligibility */
*/
int EITCFLAG;        /* Earned Income Tax Credit Activation Flag   */
```

In the first line, "NUMBER" is a macro used by the SPSM to ensure portability across machines; it corresponds to the type "float". EITCMAX is the name of the new parameter. The SPSM convention is such that parameter names are capitalized. The other "NUMBER" parameters define the phase in and phase out rates as well as the earned income turning points that determine the level of the credit. The other two parameters are naturally integers. For readability, we have also added comments on the right to indicate the nature of the parameter values.

These simple additions complete our changes to `Mpu.h`. Typically, if we were adding new parameters to a non-empty set of user parameters already in place, we would simply add the new definitions to the bottom of the existing list in `Mpu.h`.

The SPSM allocates space for up to 500 such new parameters, easily enough for typical glass box user applications. Even more parameter additions are possible when some of them are of the smaller "int" type. **Any attempt to exceed this limit will result in a compile-time error message that will make the problem apparent.**

#### **MODIFY `AMPD.CPP` TO MAKE THE PARAMETERS AVAILABLE TO THE SPSM**

The user also needs to change the `Ampd.cpp` file to make the new parameter "visible" throughout the portions of the SPSM that may need to reference it. The SPSM provides a function "pmaddent" (Parameter Module, Add Entry) to carry out this task. The user calls the function once for each new parameter, just before the "DEBUG\_OFF (Ampd)" statement near the end of `Ampd.cpp`, at about line 190.

If the user is working on a copy of `Ampd.cpp` that already contains invocations of `pmaddent` for other parameters, those other calls can be used as templates. In our example though, since there are, as yet, no other parameters added, we copy a `pmaddent` template from the file `C:\SPSM\MODEL\Mpd1.cpp` (Model Parameter Definition File 1). For our first parameter, EITCMAX, we recognize that this NUMBER type parameter should be very similar to the BOAS parameter appearing at about line 530. We simply copy that `pmaddent` invocation and make appropriate substitutions. This, practice, copying something generally similar that already exists and works, and then modifying it, is standard practice in glass box development. The invocation, as copied, looks like:

```
pmaddent(pcp, "BOAS", (char *)&MP.BOAS, NULL, P_SCL, C_NUM, 0, 0, NULL, 0);
```

We modify it for our purposes by changing the two references to BOAS to correspond to our new parameter. Replacing "BOAS" by "EITCMAX" and "(char \*)&MP.BOAS" by "(char \*)&MP.UM.EITCMAX", because the new parameter is an element of the substructure UM (User Model) that lies within the MP (Model Parameters) structure, we obtain the result:

```
pmaddent(pcp, "EITCMAX", (char *)&MP.UM.EITCMAX, NULL, P_SCL, C_NUM, 0, 0, NULL, 0);
```

For the moment we simply retain all of the other arguments to the function without having to worry about what they represent. As long as we have chosen an appropriate template to steal from, there is no problem. Later, we'll look at the meaning of each of the arguments to `pmaddent` so as to facilitate more informed judgements about appropriate sources for `pmaddent` templates, and more effective recovery from any incorrect choices.

This template may also be used for the 2 income turning point parameters, EITCTPMX and EITCTPRC, where the revised pmaddent would be as follows:

```
pmaddent(pcp, "EITCTPMX", (char *)&MP.UM.EITCTPMX, NULL, P_SCL, C_NUM, 0, 0, NULL, 0);
pmaddent(pcp, "EITCTPRC", (char *)&MP.UM.EITCTPRC, NULL, P_SCL, C_NUM, 0, 0, NULL, 0);
```

The other NUMBER type parameters are rates for the phase in and phase out calculations for the EITC. Taking an example from mpd1.cpp, we see that OASRR can be used as it represents a reduction rate. The invocation, as copied, looks like:

```
pmaddent(pcp, "OASRR", (char *)&MP.OASRR, F_FRACT, P_SCL, C_NUM, 0, 0, NULL, 0);
```

We modify it for our purposes by changing the two references to OASRR to correspond to our new parameter. Replacing “OASRR” by “EITCPIR” and “(char \*)&MP.OASRR” by “(char \*)&MP.UM.EITCPIR”, we obtain the result:

```
pmaddent(pcp, "EITCPIR", (char *)&MP.UM.EITCPIR, F_FRACT, P_SCL, C_NUM, 0, 0, NULL, 0);
```

We can then copy this line and edit it for the phase out rate parameter to obtain the result:

```
pmaddent(pcp, "EITCPOR", (char *)&MP.UM.EITCPOR, F_FRACT, P_SCL, C_NUM, 0, 0, NULL, 0);
```

We choose UIWAITWKS (the integer number of weeks in the Employment Insurance waiting period) as our template for our integer parameter specifying the age of children in the census family that determines census family eligibility for the credit. The invocation, as copied, looks like:

```
pmaddent(pcp, "UIWAITWKS", (char *)&MP.UIWAITWKS, NULL, P_SCL, C_INT, 0, 0, NULL, 0);
```

As with the parameters above, we modify the template in two places, substituting the name of the parameter with the new parameter and its relation to the MP structure, that is, with the inclusion of the UM indicator. The modified pmaddent invocation would appear as follows:

```
pmaddent(pcp, "EITCAGE", (char *)&MP.UM.EITCAGE, NULL, P_SCL, C_INT, 0, 0, NULL, 0);
```

Similarly, we choose an existing flag parameter to serve as the template for our new Earned Income Tax Credit flag; OASFLAG, which controls whether Old Age Security benefits are computed at all, seems a good choice. Before our modifications, this last invocation appears as follows:

```
pmaddent(pcp, "OASFLAG", (char *)&MP.OASFLAG, NULL, P_SCL, C_INT, E_FLAG, 0, NULL, 0);
```

As with the previous examples, we modify the templates in two places. The modified pmaddent invocation appears as follows:

```
pmaddent(pcp, "EITCFLAG", (char *)&MP.UM.EITCFLAG, NULL, P_SCL, C_INT, E_FLAG, 0, NULL, 0);
```

These simple additions complete the modification of Ampd.cpp as regards making the VALUES of the new parameters available throughout the SPSM, once we have somehow assigned those values. Later in this section we address some of the mechanisms by which the user can make the assignments. However, we still need to provide clear labels for the parameters so that the SPSM can use them to give meaningful documentation of the model parameters as appropriate.

Once again, the design of the SPSM renders our job easy. There is a ready-made function.

`stradd`, to implement the labelling. Just after the `pmaddent` statements we insert these lines to invoke this function, `stradd` --

```
stradd("EITCMAX", "Earned Income Tax Credit Maximum Amount");
stradd("EITCPIR", "Earned Income Tax Credit Phase In Rate");
stradd("EITCPOR", "Earned Income Tax Credit Phase Out Rate");
stradd("EITCTPMX", "EITC Income Turning Point for Maximum Credit");
stradd("EITCTPRC", "EITC Income Turning Point for Reduced Credit");
stradd("EITCAGE", "EITC Child Age for Census Family Eligibility");
stradd("EITCFLAG", "Earned Income Tax Credit Activation Flag");
```

The `stradd` (String Add) function, when executed, "attaches" the descriptor string to the parameter so that the descriptor will automatically appear in all relevant SPSM documentation and labelling. With the (**`stradd`**) function's arguments this simple, i.e. one string identifying the name of a new parameter, with a second string providing the associated description, we do not even need to resort to a template.

The final item within this step, partial compilation of the `Ampd.cpp` function, is optional, but we recommend it as conducive to the orderly development of glass box applications. This type of partial compilation enables the user to have the compiler check for syntax errors while the nature of the modifications are still fresh in one's mind. It does not ensure that the modified source code meshes with the rest of the SPSM. Note that one has to have modified any relevant header files, here the `Mpu.h` header file, first in order for the Debug compilation to work.

### **MODIFY THE FUNCTIONS THAT USE THE NEW PARAMETER(S)**

To complete the programming changes involved in adding the parameter, we next need to alter the `Agai.cpp` function so that it makes use of the new symbolic parameters rather than the "hardwired" values that appeared in the Quick Start example. We begin by adjusting the label defined for the function; more specifically we modify the code defining the label so that it reads --

```
/*global*/ char FAR Tgai[] = "Agai.cpp Parameterized"
```

With this label supplied, the SPSM can use it whenever it has occasion to use the function's description in its documentation.

The substantive changes to the `Agai.cpp` function are simple to implement.

Where the Quick Start example used "1200.0", we substitute the symbolic representation "MP.UM.EITCMAX". This naming convention, exactly identical to the one used in the "pmaddent" function invocation in the `Ampd.cpp` change above, reflects EITCMAX's location within the UM (User Model) substructure of the MP (Model Parameter) structure that the SPSM uses to store all of the model parameters.

Where the Quick Start example used 20 to represent the age of children required in the family for the family to be deemed eligible for the tax credit, we substitute MP.UM.EITCAGE. All relevant formulae are adjusted accordingly. We can also use this parameter to denote the age limit for those individuals who may receive the credit once the family's eligibility has been determined.

Thus, the key Quick Start example source code block will be revised to the following:

```

void Agai(
    P_hh hh
)
{
    register P_in in;
    register int ini;
    register P_in ineld;
    register P_in inspo;
    register P_cf cf;
    register int cfi;
    int nceitc;
    NUMBER cfempinc;
    NUMBER eitc;

    DEBUG_ON("Agai");

    /* process persons in household - currently commented out*/
    /* for (ini=0, in=&hh->in[0]; ini<hh->hhnin; ini++, in++) {
        in->im.imiosa = ZERO;
    }
*/
    if (MP.UM.EITCFLAG) {
        /* process census family in household */
        for (cfi=0, cf=&hh->cf[0]; cfi<hh->hhncf; cfi++, cf++) {
            /* initialise elder's pointer */
            ineld = cf->cfineld;

            /* calculate elder's contribution to family net income */
            cfempinc = ineld->id.idiemp;

            if (cf->cfspoflg) {
                DEBUG1("%s spouse present\n");
                inspo = cf->cfinspo;    /* spouse's in pointer */

                /* add spouse's net income to family net income */
                cfempinc += inspo->id.idiemp;
            }

            nceitc = 0;

            /* process children in census family */
            for (ini=0, in=cf->cfinch; ini<cf->cfnchild; ini++, in++) {

                if (in->id.idage > MP.UM.EITCAGE) {
                    DEBUG2("%s discarding old child, aged %d\n",
in->id.idage);
                    continue;
                }

                /* Count up remaining children */
                nceitc++;
            }

            eitc = 0;
        }
    }
}

```

```

        if (nceitc > 0 ) {
            if ( cfempinc < MP.UM.EITCTPMX ) {
                eitc = MP.UM.EITCPIR * cfempinc;
            }
            else if ( cfempinc <= MP.UM.EITCTPRC ) {
                eitc = MP.UM.EITCMAX;
            }
            else {
                eitc = nneg(MP.UM.EITCMAX - ((cfempinc -
MP.UM.EITCTPRC) * MP.UM.EITCPOR));
            }
        }
        /* process persons in census family */
        for (ini=0, in=cf->cfin; ini<cf->cfnpers; ini++, in++) {

            if (in->id.idage > MP.UM.EITCAGE) {
                in->im.imiosa = eitc;
            }
        }
    }
}

DEBUG_OFF("Agai");
}

```

The underlying logic remains unchanged, but now it is specified parametrically. In writing the source code in this fashion, we have trusted that users of the model will supply only reasonable values of the parameters. For example, we trust here that no user will inadvertently supply a value of zero (0) for MP.UM.EITCAGE and unintentionally create a tax credit for those families with only children aged 0, and then assign the credit to all members of the eligible family who are over the age of 0. Later, we'll show how the user can use the SPSM's edit-check facilities to guarantee that the parameters values are reasonable.

Once again we perform a Debug compilation to catch any syntactic errors before compiling the new model.

## VALIDATE AND MAKE BLACK-BOX PRODUCTION RUNS

As with the Quick Start example, we still need to test the new variant of the model to ensure that it gives reasonable results. With SPSM runs being essentially free, and not terribly time consuming, two particular validation runs immediately suggest themselves.

Users can either read in a model parameter include file (.mpi) if running in classic SPSM, or input values for glass box parameters on the fly if using Visual SPSM. In Visual SPSM, glass box parameters are found in the Tax/transfer tab in last section – User defined tax/transfer parameters (if any) for base/variant scenario, depending on the user's selection of standard/alternative models in the scenario set up box for Visual SPSM usage.

1. The first is a run with the EITCMAX and EITCPIR parameters set to zero, using a base/variant run and checking the results on disposable income. For this run we set the EITCMAX parameter to 0, EITCPIR to 0 and the EITCFLAG parameter to 1. We

expect that there will turn out to be no differences between the base and variant systems because the zero value for the tax credit amount parameter renders the change nil.

2. We modify the first test to supply a value of 1200 for the `EITCMAX` parameter, leaving the `EITCFLAG` parameter at 1, and setting `EITCPIR` to 0.15, `EITCPOR` to 0.10, `EITCTPMX` to 8000 and finally `EITCTPRC` to 12000. Again we request the base/variant tables from the previous test as output, expecting to observe the same results we obtained from the original Quick Start example with its hardwired values.
3. We modify the `EITCMAX` to take on a value of 2400, expecting that this will considerably increase the cost of the hypothetical option, since the maximum credit amount is doubled. The specific tables allow us to ascertain easily, at least for the gross amount of the credit, whether the right amounts of tax credit have been calculated for each of the eligible families based on their earned income.
4. Finally, we add a fourth test to turn the tax credit off via the `EITCFLAG` parameter. In making this validation test, we leave all the other parameters at their set values so that we can be sure that any effect is caused by resetting the flag parameter to zero. As with the first validation run described above, we expect that there will be no differences between the base and variant disposable income, as the computation of the tax credit has been suppressed.

For carrying out the validation tests, it remains only to assign the desired values to the new parameters. The design of the SPSM makes this easy. If we simply run the new model without having bothered to specify a needed parameter value, the SPSM notes the omission, allowing us to provide the value via the "on-the-fly" parameter editing facility. Similarly, the new parameter file could have been specified in an `MPI` (Model Parameter Include) file. Authoritative descriptions of these latter two methods may be found in *User's Guide*.

Upon making the tests described above, we are encouraged that our change, the addition of the new parameters, has been properly implemented because all of the sets of outputs appear as anticipated. The results of the third test, where we double the `EITCMAX` (EITC maximum amount) parameter, are especially important. There we can check to see if appropriate amounts of supplement benefits are added to the same families and that they are at the benefit amounts expected. Now, with the model changes validated, we are ready to make the relevant set of production runs. For example, a client might ask us to use a `EITCAGE` parameter value of 18 to confirm our his expectation that there will be fewer families eligible for the tax credit than at the age setting for 20, and that the costs, in aggregate would be slightly less. Similarly, we might substitute a much larger value, say 5000.0 for `EITCMAX`, to confirm our expectation that, with such a large transfer, the change in disposable income would be much more dramatic for the individuals affected.

## **SUMMARY/CONCLUSION**

It is useful to conclude by highlighting, but without any redevelopment, the key points relevant for adding typical scalar parameters to a model. In noting these points, it is taken as given that the analyst is working with COPIES of the relevant files, and is performing all of



the modifications in a task subdirectory dedicated to the analysis at hand. We also assume that the user has updated the project to include all of the relevant source code files. In terms of technique, we assume that the user will most often be grabbing a chunk of similar existing code as a template, and then modifying it as required.

1. Modify the `Mpu.h` header file, adding one statement for each new parameter. The statement indicates the name of the parameter and its type, with `NUMBER` used for float values.
2. Modify `Ampd.cpp` source code file, adding two statements for each new parameter.
  - Add one "pmaddent" invocation for each parameter so that the SPSM can make its value available to all functions called by `Adrv.cpp`. Normal practice is to copy the invocation from an existing invocation and then modify it in two places -- the name of the parameter and its address.
  - Add one `stradd` invocation for each parameter so that the SPSM attaches the parameter's label to that new parameter.
3. Modify the relevant substantive function(s) to make use of the new parameter(s), changing the labelling as well as the internal logic of the function.
4. Debug and Compile the new model. Make the necessary "production runs" of the model and then interpret the results.

## Glass Box Development: Adding Less Typical Parameters

This chapter describes in greater detail the arguments for the `pmaddent` function and that function's use when the user adds scalar, vector and matrix parameters to glass box applications. To do this, it builds on the foundation established in the previous section (Adding typical scalar parameters), developing the new considerations for less typical scalar parameters, for vectors and lookup schedules, and for matrices. Finally, the last section summarizes the key points for regarding the addition, to a model, of these less common forms of parameters.

The first section of this chapter presents the set of arguments for the key `pmaddent` function, describing the key features of each of them. The following section then presents a list of the types of scalar parameters the user might wish to add. For each type, it indicates briefly the purpose of that specific type, describes the key `pmaddent` arguments for the type, and identifies an appropriate `pmaddent` template to use when creating a parameter of that type. Also included are sections that take up the special considerations involved in adding vectors of parameters, following with schedule "lookup" parameters, and matrices of parameters.

### **PMADDENT: THE FUNCTION AND ITS ARGUMENTS**

Recall from section on description of adding typical parameters that the most complicated aspect of making a new parameter available to a model lies with the changes to `Ampd.cpp`, the changes to `Mpu.h` being very straightforward definitions of the parameters' types.

Within the `Ampd.cpp` changes, the only significant challenge, and not by any means a particularly onerous one, comes from the invocation of the `pmaddent` function. We noted that the glass box user can usually sidestep the complexities of that function simply by choosing an "appropriate" template invocation, one copied from an "appropriately similar" parameter already defined. In this section we explain more fully the sense of the various `pmaddent` arguments, so that the glass box user will be able to use the `pmaddent` function confidently, even when there is no obvious template to be copied and modified.

Our starting point for the description of the `pmaddent` arguments is the explanatory comment that appears in `Ampd.cpp` itself (at about line 150 of the GLASS version). We'll take up each of the ten arguments in sequence. We emphasize, however, that the user should have relatively little occasion to require this information. Most of the time, the parameter to be added will be well understood, and an appropriately similar template parameter readily identifiable. In all those cases the user should simply modify the relevant templates and get on with the modeling, leaving the intricacies of `pmaddent` to those doing non-standard tasks.

`Ampd.cpp`'s summary of the `pmaddent` arguments is as follows:

```
/**
 * pmaddent(
 *   pcp,                <= parameter chain being extended (leave as is)
 *   "XXXXX",           <= name by which the parameter will be known
 *   (char *)&MP.UM.XXXXX, <= address of the parameter
 *   Format,            <= printing information for the parameter
 *   Agg_Type,         <= Aggregate type (scalar, vector, etc.)
 *   C_Type,           <= C-type (integer, number, string)
 *   Edit,             <= Edits to be performed
 *   Row_max,         <= Maximum number of rows, or option edit limit.
 *   Rows_addr,       <= Address of int holding current number of rows
 *   Limit,           <= Number of columns);
 */
```

The first argument (`pcp`) is particularly straightforward; the user ALWAYS enters the variable `pcp`. The argument identifies the specific parameter chain that the user is extending. Although the SPSM employs other parameter chains in its operations, the user may add parameters ONLY to the `pcp` chain.

The second argument, characterized by the "XXXXX" placeholder in the comment, is the user's name for the parameter. The name here will be the same one that the user employed in the `Mpu.h` definition. Users should be careful to choose reasonable mnemonics for these names, e.g. the EITCFLAG name we used previously. The SPSM convention is that these names should start with an upper-case letter and should contain only upper-case letters and digits.

The third argument, characterized by the `(char *)&MP.UM.XXXXX` placeholder, is the address for the parameter. The initial (C language "cast") portion of the argument, `(char *)` is invariant. Similarly, the `'MP.UM'` portion is invariant because the user's parameters are always added to the "Model Parameter, User Model" structure. The `'XXXXX'` portion represents the name of the user's parameter; it is set to the string used as the second argument, but without the delimiting quotes. Finally, reflecting C's treatment of variable's addresses, the ampersand (&) is present if the parameter is a scalar, and typically absent if it

is not (i.e. absent if the parameter is a vector, lookup parameter or a matrix). The common C-language device of specifically referring to the first element of an array is taken up later as a special topic. For the special case of a 'DUMMY' parameter, described below, this third argument takes on the value of 'NULL'.

The fourth argument, characterized in the description above as 'Format', is a string. It contains information about how the SPSM should display the value of the parameter when documenting it. Typically, the user will use the predefined format 'NULL', indicating that the SPSM is to print the parameter as it sees fit. Another predefined format, "F\_FRACT", contains the string "8.5" and is particularly suited for printing out the value of a fraction. The user can also enter an explicit string for the argument; e.g. using "8.0" specifies that the value should occupy 8 characters, and that it should not include a fractional part. An argument of "7.2" would specify a string occupying 7 characters, with two digits beyond the decimal point. When appropriate, e.g. for the lookup style parameters, the argument can include multiple format indicators, e.g. "8.0 8.2 8.2". The predefined format F\_LKTUR, used for P\_LKPXY type parameters provides a concrete example of this usage.

The fifth argument, characterized in the description above by 'Agg\_Type', indicates the type of the parameter. This argument reflects a forced choice among the six integer values 0 through 5. Each of the six values has a mnemonic counterpart that the user can employ, for clarity, in place of the numeric value itself. The six values, their mnemonic counterparts, and their interpretations are as follows:

The value 0, represented mnemonically by P\_SCL, is the most common value. It is used for a parameter that is a scalar value (integer, float, fraction, etc.).

The value 1, represented mnemonically by P\_VCT, is used when the parameter is a vector. Other key information about the vector, e.g. the number of elements it contains, is given by other pmaddent arguments.

The values 2 and 3, represented by the mnemonics P\_LKPXY and P\_LKPSL, are used within the SPSM for two special kinds of schedules in which lookups are performed, one with an X-Y format and the other with a range-slope format. In the event that the user wishes to create parameters of these types, the GISST and FTX parameters provide operational examples. These two parameter types define schedules that correspond to functions LKUP1 and LKUP2 respectively; the LKUP1 and LKUP2 functions themselves are documented in the *Algorithm Guide*. The use of schedules in the SPSM is documented more fully in this chapter. The value 4, represented by the mnemonic P\_TBL, is used when the parameter is a two dimensional matrix (table). Other key information about the matrix, e.g. the numbers of rows and columns, is given by other pmaddent arguments. The commodity tax matrix CTTXRM provides a good example.

The value 5, represented by the mnemonic P\_DUMMY, will not generally be used by glass box users. This parameter type corresponds to a dummy entry used to hold the name of a header string for documentation purposes.

The sixth argument, characterized in the description above by 'C\_Type', indicates the type of

the parameter. There are three possible entries for this argument. The value `C_INT` is appropriate when the parameter value is inherently an integer, i.e. consists of a number with no fractional part, and has a value within the C language's bounds for integer values. The user will employ a value of `C_INT` for this argument when the `Mpu.h` entry for the parameter used an 'int' declaration. Parameters that are "flags" or "options" will naturally be integers.

The value `C_NUM` is appropriate when the parameter value may have a fractional part, or when it is too large to be stored as an integer. The user will employ a value of `C_NUM` for this argument when the `Mpu.h` entry for the parameter used a 'NUMBER' declaration.

The value `C_STR` is used when the parameter value is a dummy entry used for a header string. Glass box users will not generally have occasion to use `C_STR`.

The seventh argument, characterized in the description above by 'Edit', indicates the edit checks to be imposed on the value of the parameter. The activation of these edit checks will force the value of the parameter to obey various constraints that may be appropriate. In addition, they may constrain a user's ability to modify the parameters' values at execution time via the SPSM's parameter editing facilities. The `pmaddent` argument governing such edit checks is an integer value. Typically, the user will choose a value by entering an element from a set of predefined mnemonic values (described below).

The codes and their interpretations are as follows:

`E_NONE` (value 0) indicates that no edit checks are to be performed on this parameter.

`E_FIXL` (value 1) applies only when the parameter is a vector, lookup table or array (and thus has a known maximum number of rows). This edit code prevents the user from attempting to change the actual number of rows from the maximum value. The mnemonic here indicates that the row limit is regarded as fixed.

`E_FLAG` (value 2) indicates that the parameter is a flag. Under SPSM conventions, this means that the parameter is treated as a binary variable (defined as an integer) that must take on either the value 0 (zero) or the value 1 (one).

`E_FRCT` (value 4) indicates that the parameter is a fractional value that must fall in the domain 0.0 and 1.0, inclusive.

`E_NOCH` (value 8) indicates that the user is not allowed to make any changes to the value of the parameter via the SPSM's built-in parameter editor. This edit check can apply to any of the types of parameters, `C_INT`, `C_NUM` or `C_STR`.

`E_OPT` (value 16) indicates that the parameter is of a special "option" type, corresponding to a forced (integer) choice of values from 1 to the maximum option number permitted. The maximum number itself is provided, for option parameters, by the eighth `pmaddent` argument.

Should multiple codes be relevant, the user can simply add the relevant component values

together. E.g. a value of 12 indicates a parameter that must be a fraction, and that the user is not permitted to edit dynamically at run time.

The eighth argument, characterized in the description above by 'Row\_max', indicates the maximum number of rows for certain types of parameters (P\_VEC, P\_LKPXY, P\_LKPSL, or P\_TBL). (Note however, the SPSM's flexibility, in that the actual number of rows used in a specific application may be less than this maximum.) For the other parameter types (P\_SCL and P\_DUMMY) this argument should take on a value of 0 (zero), except for OPTION parameters, where it indicates the number of legitimate option values. (A value of N for an OPTION parameter indicates that the legitimate values range from 1 to N inclusive.) Since scalar parameters (P\_SCL) are the norm, this argument will most often take on the value 0.

The ninth argument, characterized in the description above by 'Rows\_addr', contains the address of the integer variable corresponding to the current (actual) number of rows for certain kinds of parameters, P\_VEC, P\_LKPXY, P\_LKPSL, and P\_TBL. When the number of rows is irrelevant, e.g. for a scalar or DUMMY parameter, the user enters a value of 'NULL' for this argument; thus, this argument will typically take on the 'NULL' value.

The tenth pmaddent argument, characterized in the description above by 'Limit', indicates, for parameters of type P\_TBL, the number of columns in the table. In contrast to the flexibility provided for rows, where the actual number of rows may be smaller than the maximum number, the SPSM requires that the actual number of columns be fixed beforehand. For all other parameter types, this argument takes on the value of 0 (zero).

There are two more optional arguments which may be added to the list. They do not currently have a use in glass box code. The eleventh argument is a label for the rows of table and vector parameters. The twelfth is a label for the columns of table parameters. These labels control the display of the parameters in Visual SPSM.

## **CHARACTERIZING SCALAR PARAMETERS**

With the description of pmaddent's arguments complete, we turn first to the kinds of scalar parameters that the user may wish to add. The discussion here treats them in roughly descending order as regards expected frequency of use. For each of the types the description indicates (1) the general nature of the parameter, (2) the key pmaddent arguments, and (3) an appropriate pmaddent template. Even though this chapter deals primarily with more specialized types of parameters, we have, for completeness, included in this scalar parameters section instances of the more common parameter types already described in previous section of this *Programmer's Guide*.

### **REAL/float/NUMBER Parameters**

The analyst uses this type of parameter when needing to supply a real value, e.g. some program guarantee expressed in dollars and cents. The `Mpu.h` definition will use the NUMBER specification. In the pmaddent call, the key argument is the C\_NUM entry for C\_Type. An appropriate template is --

```
pmaddent(pcp, "FCBBAS", (char *)&MP.FCBBAS, NULL, P_SCL, C_NUM, 0, 0, NULL, 0);
```

## **INTEGER/int Parameters**

The analyst uses this type of parameter when needing to supply a value that is inherently an integer, e.g. the typical number of weeks in the waiting period for employment insurance. The `Mpu.h` definition will use the `int` specification. In the `pmaddent` call, the key argument is the `C_INT` entry for `C_Type`. An appropriate template is --

```
pmaddent(pcp, "UIWAITWKS", (char *)&MP.UIWAITWKS, NULL, P_SCL, C_INT, 0, 0, NULL, 0);
```

## **FLAG Parameters**

The analyst uses this type of parameter when wishing to supply a "switch" value, e.g. an indicator that will specify whether certain other calculations are to be performed or not. The `Mpu.h` definition will use the `int` specification for such a parameter. In the `pmaddent` call, the key arguments are the `C_INT` entry for `C_Type` and the `E_FLAG` entry for `Edit`. An appropriate template is --

```
pmaddent(pcp, "FAFLAG", (char *)&MP.FAFLAG, NULL, P_SCL, C_INT, E_FLAG, 0, NULL, 0);
```

## **FRACTION Parameters**

The analyst uses this type of parameter when wishing to supply a value that is inherently a fraction, and thus more constrained in value than a float. Tax rates and contribution rates are good examples of this type of parameter. The `Mpu.h` definition will use the `NUMBER` specification for such a parameter. In the `pmaddent` call, the key arguments are the `C_NUM` entry for `C_Type` and the `F_FRACT` entry for `Format`. In the template call we suggest for this type of parameter, the user has chosen **NOT** to require an `Edit` check that will constrain the value between zero and unity; the template itself is --

```
pmaddent(pcp, "UIPF", (char *)&MP.UIPF, F_FRACT, P_SCL, C_NUM, 0, 0, NULL, 0);
```

## **OPTION Parameters**

The analyst uses this type of parameter when the parameter reflects a forced choice among a small fixed number of alternatives; a numerical value is used to indicate a nominal or qualitative selection. As an example of such a qualitative distinction, one might consider a parameter that indicates whether the Caregivers Tax Credit amount is to be determined by (1) providing the maximum value of the credit, or (2) apply the greenbook value for the credit, or (3) to model the caregivers amount with the appropriate income test. In the `pmaddent` call, the key arguments are the `C_INT` entry for `C_TYPE`, the `E_OPT` entry for `Edit`, and the numeric entry giving the number of legitimate categories for the `Row-max` argument. An appropriate template is --

```
pmaddent(pcp, "CGTCOPT", (char *)&MP.CGTCOPT, NULL, P_SCL, C_INT, E_OPT, 3, NULL, 0);
```

## **EDIT-FRACTION Parameters**

The analyst uses this type of parameter when it is desirable to constrain any user-supplied value to fall in the interval from zero to unity. For example, the parameter might represent a taxback rate that would be considered unreasonable if it corresponded to a rate of less than zero percent or greater than one hundred percent. The `Mpu.h` definition for an editable fraction parameter will use a `NUMBER` specification. In the `pmaddent` call, the key arguments are the `C_NUM` entry for `C_Type` and the `E_FRCT` entry for `Edit`. The user might wish also to specify a `Format` specification of `F_FRACT`. An appropriate template is --

--

```
pmaddent(pcp, "CHATR1", (char *)&MP.CHATR1, NULL, P_SCL, C_NUM, E_FRCT, 0, NULL, 0);
```

## **DUMMY Parameters**

The user will not typically specify **DUMMY** parameters, which are intended for conveying labelling and sectioning information when parameter configurations are being documented. An illustrative template is -

```
pmaddent(pcp, "2.3.1", NULL, NULL, P_DUMMY, C_STR, 0, 0, NULL, 0);
```

For all types of scalar parameters, the user has the choice among mechanisms for supplying values to them:

1. specification via presence in a supplementary inclusion parameter file (MPI, CPI and API), and
2. specification via the Visual SPSM parameter editing facility. Note that user specified parameters can be found in the last section in the tree hierarchy under the specific control/adjustment/model parameter tabs.

## **VECTORS OF USER-DEFINED PARAMETERS**

The preceding portions of this chapter have focused primarily on scalar parameters, in part because they are the most common types, and in part because they are easiest to describe. However, the SPSM also offers the user the capacity to create vectors of parameters. Such vectors will be most relevant when the user wants to create a set of related parameters with the members of the set occurring in a natural "indexable" order along a single dimension.

As an example, consider the case of an analyst modeling some proposed housing supplement program. For each family size up to ten this hypothetical program has an income limit beyond which a family becomes categorically ineligible to receive benefits. Unfortunately, these limits, though increasing with family size, are not related to that family size in any smooth or readily calculated manner. Instead, the user wants to have ten different parameters, corresponding to families of size one to ten-plus, to represent the benefit cutoff levels. It makes much more sense to have a vector of parameters, indexed on family size, than to develop code that treats each of the ten possibilities as a separate, independently developed case.

In this section then, we characterize the key points the user must understand to define vectors of user parameters for SPSM models. Our earlier comments about parameter addition in general continue to hold (order of changes to files, use of mnemonic values, validation, etc.), but we focus on those aspects specific to the effective use of vectors of user-defined parameters.

### **Additions to `Mpu.h`, `Cpu.h` or `Apu.h`**

Just as the user declares scalar parameters in `Mpu.h` (or `Cpu.h` or `Apu.h`), s/he must also declare any user-defined parameter vectors in these files. The scalar and vector declarations look very similar, except that the vector declaration indicates, via an expression in square brackets, the length of the vector. The SPSM treats parameter vectors as column vectors; thus the length of the vector is its number of rows.

For our housing program example, suppose that the user has declared a (manifest) constant HHPYCOMAX (Hypothetical Housing Program, Income Cutoff Maximum Rows). The user has assigned it the value 10 because there will be a distinct cutoff for each family size up to ten-plus. The definition would be accomplished via a statement of the form --

```
#define HHPYCOMAX 10 /* maximum # of number of rows in the HHPYCO vector */
```

See the `Mp.h` file in the `SPSM\DEFS` subdirectory (starting at about line 400) for illustrations using parameter vectors that are part of the black box SPSM, rather than being user-defined.

The vector itself is to be named HHPYCO, with the value of the *i*'th entry corresponding to the cutoff for a family of size *i*+1. (Recall that the C language starts all vectors with the zero'th entry.) The `Mpu.h` entry for the new vector will then look something like --

```
NUMBER HHPYCO[HHPYCOMAX]; /* Hypothetical Housing Program Income Cutoffs */
```

Although it is possible to "hardwire" the length directly into the declaration, e.g. using something like `HHPYCO[10]`, we strongly discourage it. We recommend instead the manifest constant approach described above. The reason behind this recommendation stems from the need, in the corresponding `Ampd.cpp`'s `pmaddent` invocation, of an entry for the maximum number of rows. Using a given manifest constant in both locations precludes the possibility of a later revision leading to one value being used in `Mpu.h` while another is used in `Ampd.cpp`. If the user should create a discrepancy between the `Mpu.h` (or `Apu.h` or `Cpu.h`) and `Ampd.cpp` values, the errors that result could be infuriatingly difficult to track down.

Recall that the actual number of rows present in the (column) vector for a given SPSM execution may be different from (less than) the maximum number possible for that parameter. Thus, the user must also declare, in the same header file, a variable in which the SPSM will store the actual number of rows being used (a value that may vary from run to run of a given executable version of a glass box model). The user provides a variable for the SPSM to store the actual number of rows via an additional declaration in the header file. Following the SPSM convention that these length variables are named as the parameter name with a suffix of "rows", the `Mpu.h` file should also contain a declaration of the form --

```
int HPPYCOrows; /* number of rows in HPPYCO */
```

The `mp.h` file in the `SPSM\DEFS` subdirectory provides many examples in its section on array limits (about line 2500). Later on, `Ampd.cpp`'s `pmaddent` call for HHPYCO will refer to the address of the HPPYCOrows variable.

### **Additions to `Ampd.cpp`**

So that the SPSM can make the values in the new parameter vector available to the user's substantive code, the user must set up the appropriate linkages via an invocation of `pmaddent`, just as with scalar parameters. The invocation would look like one of the following:

```
pmaddent(pcp, "HHPYCO", (char *)MP.UM.HHPYCO, NULL, P_VCT, C_NUM, E_NONE, HHPYCOMAX, &MP.UM.HHPYCOrows, 0);
```

or



```
pmaddent(pcp, "HHPYCO", (char *)&MP.UM.HHPYCO[0], NULL, P_VCT, C_NUM, E_NONE,
HHPYCOMAX, &MP.UM.HHPYCOrows, 0);
```

In the first illustrative invocation the third argument uses no ampersand because the reference is to the new parameter vector; C treats such a reference as the address of the first element. In the second illustrative invocation the user has elected to refer more explicitly to the address of the first element by including the ampersand and the [0] index. The `MpdX.cpp` files in the `SPSM\MODEL` subdirectory contain examples of both types of references.

Three other `pmaddent` arguments deserve special comment for our description of the highlights for user-defined parameter vectors. The `Agg_Type` argument (#5) necessarily takes on the value `P_VCT`. The Row-max argument (#8) is the manifest constant created in `Mpu.h` to specify the maximum number of rows; in our housing program example this corresponds to the `HHPYCOMAX` entry. Finally, the Rows-addr entry (#9) corresponds to the name of the variable declared to store the actual number of rows, preceded by an ampersand; in our housing program example this corresponds to the `&MP.UM.HHPYCOrows` entry.

Note that other capacities activated by `pmaddent`'s arguments remain available to the user. Thus, `C_Type` is used to indicate whether the variable is a float value or an integer. The user can use the `Format` argument to specify, if desired, a format for each of the individual values in the vector. And the user employs the `Edit` argument to impose any relevant edit checks.

Just as with scalar parameters, the user will also wish to modify the `Ampd.cpp` file to add an invocation of `stradd` for each new user-defined parameter vector. This addition will ensure that when the SPSM documents the new user-defined parameter, the user's textual description of the parameter will form part of that documentation.

### **User-Defined Parameter Vector References in the Source Code**

Once the user has completed the header file and `Ampd.cpp` changes necessary to make the parameter vector available to the substantive functions, it remains to refer to the relevant parameter values in those substantive functions. To continue with the hypothetical housing program example, suppose that the user has available an integer variable, `HHPFS`, (Hypothetical Housing Program Family Size) that gives the family size as defined by the anticipated regulations governing the program. Suppose too, that the user is absolutely confident that `HHPFS`'s value will lie in the domain 1 through 9 inclusive. To refer to the relevant income cutoff for benefits from the hypothetical program, the user, recognizing that the C language always numbers a vector's elements starting with 0, would employ an expression of the following form:

```
MP.UM.HHPYCO[HHPFS-1]
```

### **Specification of Parameter Vector Values**

In order for the user's new code to accomplish anything, the values of the vector's elements must be made available to the SPSM so that it, in turn, can make them available to the user's code. Typically, the user will specify these values in an ".MPI" file (or their ".CPI", or ".API" counterparts). The `FLVCRT` vector, specifying the percent of labour sponsored

funds cost allowed as a credit by province, provides a good example.

```
FLVCRT      10      # Percent of labour sponsored funds costs allowed as a credit
0.15
0.15
0.15
0.15
0.15
0.15
0.15
0.15
0.15
0.15
0.15
```

The format is clear. The first line contains the name of the parameter, followed by the number of ACTUAL elements to be used; an optional documentary comment should be added to make the nature of the parameter obvious to any reader of the file. Successive lines specify, one value per line, the values for the vector. It is important that the number of elements entry not exceed the maximum rows value specified in the pmaddent entry, and that the number of additional lines in the parameter file be equal to the number on the parameters first line; the SPSM will check to ensure that these requirements are met.

To continue with our hypothetical housing program example, the user might enter, in an ".MPI" file, something like the following:

```
HHPYCO      10      # Income cutoffs for housing program, by family size
5000.0
6120.0
7250.0
8400.0
9500.0
10600.0
11600.0
12500.0
13300.0
13900.0
```

## Summary

The key factors in adding vectors of user parameters to an SPSM glass box model can be summarized in the following checklist:

1. Make appropriate changes in the header file (e.g. Mpu.h).
  - Use a manifest constant for the maximum length of the vector, e.g.
  - `#define HHPYCOMAX 10 /* maximum # of rows for HHPYCO */`
  - Declare the vector itself,
  - `NUMBER HHPYCO[HHPYCOMAX]; /* comment */`
  - Declare a variable to hold the actual length of the vector, e.g.
  - `int HPPYCOrows; /* actual number of rows in HPPYCO */`
2. Make appropriate changes in the Ampd.cpp file.
  - Insert an appropriate pmaddent invocation, usually by modifying a copy of an existing one.
  - Enter an invocation of stradd so that the SPSM can label the new parameters

when appropriate.

3. Write the C-language source code that uses the parameters. Remember C's convention that vectors begin with the zero elements. Debugging compilation is often useful here too.
4. Supply values for the elements of the vector via a multi-line entry in an appropriate parameter file.
5. Don't forget the need for validation and testing to make sure that the new code is doing what is intended of it.

### **USER-DEFINED SCHEDULES FOR LOOKUPS**

Parameters in the form of schedules are useful primarily when one needs to perform some sort of a lookup, i.e. given an x-value, find the corresponding y-value. This section employs as examples two schedules already present in the SPSM, and one hypothetical new user-defined schedule to be added as a parameter. Together, the three examples cover the major forms of schedule parameters that a glass box user might normally need.

The first of the existing schedule examples involves federal taxes -- given taxable income, calculate the corresponding tax from the tax table/schedule.

The second existing schedule example addresses program take-up rates -- assuming that the decision of whether to apply for benefits in a program is believed to depend on the benefit that could be claimed (the higher the benefit that would be received, the more likely a unit is to file to claim that benefit), given a unit's potential benefit, look up its probability of applying for (taking up) those benefits.

The third, new parameter, example involves a totally hypothetical earnings supplement based very loosely on the U.S. Earned Income Tax Credit, but applied to individual earnings. In it, a hypothetical earnings supplementation program subsidizes initial earnings, up to \$10,000 annually, at a rate of 15%, does not further subsidize any earnings from \$10,000 to \$15,000, and then, beyond \$15,000, reduces the subsidy previously given at the rate of 10% of earnings above \$15,000, so that there is no subsidy payable to individuals earning \$30,000 or more. The new parameter will describe the subsidy payable as a function of the individual's earnings. The relevant coordinate pairs are thus ( 0, 0 ), ( 10000, 1500 ), ( 15000, 1500 ), and ( 30000, 0 ).

In terms of their specification as SPSM parameters, schedules are very similar to vectors. The main exception is that schedules have a fixed number of columns, three, rather than the single column for a vector. (In use, the schedules employ the SPSM's lkup1 and lkup2 functions.) Thus, with the relatively minor exceptions highlighted in this section, one adds a schedule to a glass box application very much as one would add a vector of parameters. Consequently, the vector-oriented prescriptions about mnemonic names, stradd labelling, partial compilation, validation etc. are not repeated here.

### **Schedule Types and Lookup Functions**

An appreciation of two separate dichotomies is absolutely critical for the effective use of schedules in the SPSM.

The first dichotomy involves the type of schedule. The user makes the choice as to type via the fifth argument of the `pmaddent` call.

If the argument is `P_LKPXY`, then lookups in the schedule are done in X-Y format, using the first (x-values) column of the schedule and the second (y-values) column; the slope values of the third column (the slopes across the successive segments of the schedule) are present, but ignored (that information being redundant because it could be calculated from the X-Y pairs). If the fifth `pmaddent` argument is `P_LKPSL`, then lookups in the schedule are done in slope format, using the information in the first (x-values) column and the third (slopes) column, plus the first value in the second (y-values) column. The remaining values in the second column are ignored in the sense that they are redundant because they could be calculated using the rest of the information in the schedule.

The second dichotomy reflects whether or not the user wishes to apply interpolation in the calculation when performing the associated lookup with the schedule. When interpolation is desired (when the desired value might lie BETWEEN entries in the y-values column), the user invokes the `lkup1` function from the SPSM algorithm library. When no interpolation is desired, the user invokes the `lkup2` sister function. The [Algorithm Guide](#) provides the authoritative description of these two algorithms.

### Appearance in SPSM Header Files

Exactly as with vectors of parameters, user-defined parameters that are schedules require certain entries in an appropriate header file (`Mpu.h`, `Cpu.h`, or `Apu.h`).

One of these is (usually) a manifest constant to define the maximum length of the schedule. The federal tax schedule (FTX) uses the maximum length `FTXMAX`. The GIS single pensioner take-up schedule (GISST) uses `GISSTMAX`. For our earnings supplement schedule, ESS, we'll use `ESSMAX`. The corresponding definitions (in `Mp.h` for `FTXMAX` and `GISSTMAX`, and in `Mpu.h` for `ESSMAX`) are as follows:

```
#define FTXMAX    15    /* maximum of number of rows in FTX table      */
#define GISSTMAX  8     /* maximum of number of elements in GISST table */
```

and

```
#define ESSMAX    5     /* maximum number of rows in ESS schedule      */
```

The second of these is a variable in which the SPSM stores the actual number of rows used by the schedule in a given run; it must, of course, be less than or equal to the maximum number. Following SPSM conventions, the `Mp.h` definitions for variables to contain the actual numbers of elements are as follows:

```
int  GISSTrows;      /* number of rows in GISST table */
int  FTXrows;        /* number of rows in FTX         */
```

In `mpu.h`, we'll follow this convention and define a variable `ESSrows` for the actual number of rows in ESS --

```
int  ESSrows;        /* number of rows in ESS schedule */
```

Mp.h (for the FTX and GISST schedules) and Mpu.h (for the ESS schedule) also need to contain the definitions for the schedules proper. Typically, these are carried out using the manifest constants defined earlier. The SPSM provides a constant, LKP\_COLS, that indicates clearly its role as defining the number of columns for lookup schedules. The definitions themselves are straightforward:

```
NUMBER FTX[FTXMAX][LKP_COLS]; /* Federal tax table [taxable income,basic federal tax]
*/
NUMBER GISST[GISSTMAX][LKP_COLS]; /* GIS take-up rate: single pensioner by benefit level
[benefit,rate] */
NUMBER ESS[ESSMAX][LKP_COLS]; /* Earnings supplement schedule [earnings, benefit level]
*/
```

### **Appearance in pmaddent Calls in Ampd.cpp**

The user defining schedule parameters will need to modify the Ampd.cpp file, adding invocations of pmaddent, to enable the SPSM to make the parameter available to the substantive source code. We begin by looking at the relevant pmaddent entries for the SPSM's existing FTX and GISST schedules.

The FTX example, drawn from the Mpd2.cpp file, appears as follows:

```
pmaddent(pcp, "FTX", (char *)&MP.FTX[0][0], NULL, P_LKPSL, C_NUM, 0, FTXMAX,
&MP.FTXrows, 0);
```

Note that the third argument indicates clearly that the schedule has both rows and columns, and that the fifth argument denotes this as a slope-oriented schedule; the eighth and ninth arguments make use of the manifest constant and actual-number-of-rows entries defined in Mp.h.

The GISST example, drawn from the Mpd1.cpp file, appears as follows:

```
pmaddent(pcp, "GISST", (char *)&MP.GISST[0][0],F_LKTUR, P_LKPXY, C_NUM, E_FRCT,
GISSTMAX, &MP.GISSTrows, 0);
```

Here the fifth argument indicates that this is an X-Y type schedule. Again, the eighth and ninth arguments make use of the elements defined for the schedule in the mp.h file.

For the hypothetical earnings supplementation program, we would add to the Ampd.cpp file an invocation of pmaddent (probably copied from an existing call and then modified as appropriate) that appears as follows:

```
pmaddent(pcp, "ESS", (char *)&MP.UM.ESS[0][0], NULL, P_LKPXY, C_NUM, 0, ESSMAX,
&MP.UM.ESSrows, 0);
```

The strong parallels with the existing GISST schedule should be apparent. Note, however, the key differences that mark a user-defined parameter schedule: the UM qualifier in the third and ninth arguments, and the user-defined (maximum rows) constant and (actual rows) variable address for the eighth and ninth pmaddent arguments.

### **Employing Schedule References in User Code**

Glass box applications that use schedules will reference them almost exclusively via the SPSM's two lookup functions, lkup1 and lkup2. This makes source code expressions using

the parameters very straightforward. Illustrations using our three examples indicate the nature of these references.

The GLASS subdirectory's ATXCALC.CPP function serves to calculate federal income taxes. This computation involves looking-up, for an individual, that individual's tax as a function of his/her taxable income. The user chooses whether or not to apply interpolation (via the choice between lkup1 and lkup2), supplies the schedule, the actual number of rows, and the relevant x-value, and the lookup function does all the rest automatically. Here, the user does want interpolation, applied in a schedule. The relevant source code appears as follows:

```
if (isnzzero(in->im.imitax)) {
/* calculate federal tax */
in->im.imfedtax = (NUMBER) lkup1(MP.FTX, MP.FTXrows, in->im.imitax);
DEBUG2("%s fedtax =%.2f\n", in->im.imfedtax);
}
```

The GLASS subdirectory's AGIS.CPP function calculates GIS benefits. This computation involves looking-up, as a function of the potential benefit that would be payable, the probability that the unit will take-up (i.e. apply for) the benefit. Here the user chooses not to invoke interpolation -- the desired take-up rate is the one in the last row in which the potential benefit is at least as great as the row's x-value. The user provides the schedule, the actual number of rows, and the potential GIS benefit, and the lookup function returns the take-up probability. (Once again, the schedule itself appears in the next sub-section.) The expression to ascertain the take-up probability appears as

```
lkup2(MP.GISST, MP.GISSTrows, (double) gis)
```

For the earnings supplement illustration, assume that the user has assigned the appropriate definition of earnings for an individual to a (double) variable named iearn. Then the expression for looking up the individual's corresponding earnings supplement would be --

```
lkup1(MP.UM.ESS, MP.UM.ESSrows, iearn)
```

Note the necessity for the UM qualifier indicating that ESS is a user-defined schedule.

### Appearance in Parameter Files

As with any other parameter, the user is responsible for defining schedule parameters in the appropriate parameter file (.MPI, .CPI, .API or on the fly). In parallel with the specification of a parameter vector, the first line provides the parameter name and number of rows, along with a comment identifying the parameter. The remaining rows for the schedule are the x-value, y-value, slope triplets. Probably the only non-obvious characteristic is that the redundant items (those that will not be used for the computations) are enclosed in parentheses.

The slope-oriented FTX schedule describes tax payable as a function of taxable income --

FTX	10		# Federal
			tax table
	0	0	0.150
	40726	(6109)	0.220
	81452	(15069)	0.260

126264 (26720) 0.290

The X-Y type GISST schedule describes take-up probabilities as a function of amount of GIS benefit available. The use of the lkup2 function with this schedule means that these take-up rates are modeled as jumping sharply at the key benefit levels.

GISST	5	# GIS take-up rate: single pensioner by benefit level	
	0	0.365	(0.0009)
	169	0.510	(0.0006)
	419	0.660	(0.0003)
	919	0.820	(0.0001)
	3169	1.000	(0.0001)

The X-Y type ESS schedule describes the earnings supplement benefit as a function of an individual's earnings; it is used with the lkup1 function because interpolation is desired.

ESS	4	# Hypothetical earnings supplement schedule	
	0	0	(0.15)
	10000	1500	(0.00)
	15000	1500	(-0.10)
	30000	0	(0.00)

### Key Points for Adding Schedule Parameters

Most of the key points for schedule parameters are identical to those for vector parameters.

1. Modify the relevant header file to include a manifest constant for the maximum number of rows, an integer variable to store the actual number of rows, and the definition for the schedule itself.
2. Modify the Ampd.cpp file to include appropriate pmaddent and stradd invocations, generally ones copied from elsewhere and then modified.
3. Provide the schedule via an appropriate parameter file or parameter inclusion file, and don't forget to validate the addition.

Two other key points are specific to schedule parameters.

1. Be absolutely sure, in the parameter include file, that the x-value column of the schedule contains values that are in strictly ascending order.
2. Don't forget to "mark" the redundant values in the schedule by enclosing them in parentheses.

### ADDING MATRICES OF PARAMETERS

For some specialized purposes involving groups of parameters, even vectors or schedules of parameters are not sufficiently convenient. For example, rather than managing several equal-length vectors in parallel, it may be much more efficient to perform lookups in a matrix of values. The design of the SPSM permits the definition and utilization of such matrices,

though it limits the number of dimensions to 2 (rows and columns). This section will describe the use of matrices of parameters via two examples, one drawn from the black box version of the SPSM, and a second involving the specification of a new user-defined matrix of parameters. Given the close relationship between parameter vectors and parameter matrices, there is no special highlights division for this section.

The black box illustration uses the CTPRST matrix specific to the commodity tax capacities of the SPSM. This parameter provides a large (48 commodities (rows) by 10 provinces (columns)) matrix of factors relevant for the calculation of the provincial sales tax.

The second example, in which the user adds a new matrix of parameters to the SPSM, involves a matrix of income cutoffs levels for an (hypothetical) experimental poverty measure. To facilitate the classification of families as in or out of poverty, the user wants to have a matrix that provides the relevant cutoffs as a function of integer variables specifying the families' structures (rows) and the sizes of place of residence (columns). Thus, the matrix's (3,2) entry will contain the poverty line for a family whose structure index is 3 and whose size of place of residence index is 2. The user has elected to name this matrix EPMCO (experimental poverty measure cutoffs). For the sake of this example, we'll assume that the user has chosen a measure defined in terms of 18 family structures (involving, say, combinations of the numbers and ages of family members) and four categories of size of place of residence.

### Appearance in `Mp.u.h`

Taking the black box matrix example first, we are not surprised to find the relevant header information for CTPRST in file `Mp.h` of the `DEFS` subdirectory. Thus, there is an integer definition, to define the actual number of rows (commodities) `CTNUMCOM`, as follows:

```
int CTNUMCOM; /* number of rows for commodity dimension parms */
```

In addition, there is a definition for the matrix itself --

```
NUMBER CTPRST[NUMCOM][NUMREG]; /* Provincial retail sales tax [com x prov] */
```

However, `Mp.h` does not contain manifest constants for the dimensions of the matrix (`NUMCOM` and `NUMREG`) since these are so closely related to the design of the commodity tax facility in the SPSM that they have been defined elsewhere so that the commodity tax module can more conveniently use the constants.

Turning to our experimental poverty measure cutoff matrix, we appreciate that we shall have to provide the relevant "defining" information to the SPSM via entries in the `Mp.u.h` file. The specific needs are (1) manifest constants for the dimensions, (2) a variable for the actual number of rows, and (3) the matrix itself. The `Mp.u.h` lines for these items might appear as follows:

```
#define EPMFAMMAX 18 /* maximum of number of family structures (rows) for EPMCO matrix */
```

```
#define EPMSIZE 4 /* number of size of place of residence categories for EPMCO matrix */
```



```
int EPMCOrows; /* number of rows for EPMCO matrix */
NUMBER EPMCO[EPMFAMMAX][EPMSIZMAX]; /* experimental poverty measure cutoffs [fam x size] */
```

### Appearance in Ampd.cpp

In parallel with the requirements for vectors of parameters, the SPSM requires for each parameter matrix a call to `pmaddent` so that the parameter values can be made available to the user's source code.

For our black box example, this call, found in file `Mpd4.cpp`, appears as follows: (There is, of course a corresponding `stradd` call.)

```
pmaddent(pcp, "CTPRST", (char *)MP.CTPRST, NULL, P_TBL, C_NUM,
E_FIXL, NUMCOM, &MP.CTNUMCOM, NUMREG);
```

The only arguments of any special interest at this point are the `P_TBL` entry for the fifth (`Agg_Type`) argument, and the `NUMREG` entry for the final (number of columns) argument. The eighth and ninth entries (maximum and address of actual numbers of rows) are just as we would expect them given the preceding descriptions for vectors and schedules.

Turning to our poverty measure glass box example, we recognize that it is necessary to add a `pmaddent` call to the `Ampd.cpp` file to permit the SPSM to give the user's source code access to the parameter matrix. That call might well appear as follows:

```
pmaddent(pcp, "EPMCO", (char *)MP.UM.EPMCO, NULL, P_TBL, C_NUM, E_NONE, EPMFAMMAX, &MP.UM.EPMCOrows,
EPMSSIZE);
```

Presumably, the user would also add to the `Ampd.cpp` file a call to `stradd` to permit the SPSM to produce appropriate documentary information.

### Referencing Matrix Elements in Source Code

Referencing the elements of a parameter matrix is easy. Assuming the variable `i` holds the (integer) commodity category and variable `j` the (integer) province code, then the associated removal factor for that combination is --

```
MP.CTPRST[i][j]
```

Similarly, if the integer variable `fstruct` holds the family structure code, and the integer variable `sizecode` provides the category for the size of place of residence, then the experimental poverty measure cutoff for that structure/size combination is given by --

```
MP.UM.EPMCO[fstruct][sizecode]
```

The primary factor to consider in such references is the C-language's convention that each dimension begins with the zero element; e.g. our 18 by 4 array uses indices that run from 0 through 17, and 0 through 3, respectively. A user must make the decision about the appropriate trade-off between using "natural, positive" integers as indices into the matrices, and economizing on the fixed block of memory available for user parameters (including any necessary row address variables).

### Appearance in Parameter Files

Just as with all other forms of parameters, the user must provide values for the parameters. Normally this will occur via entries in the appropriate parameter inclusion files (i.e. .MPI, .CPI, or .API) or on-the-fly for Visual SPSM users. For parameter matrices a parameter file entry consists of a first line that specifies the name of the parameter and the actual number of rows, plus typically a documentary comment. The succeeding lines for the parameter then supply the rows of the matrix. In our illustrations here, we provide only the first, identifying, line and then the first of the lines of numeric values.

For the black box example –

```
CTPRST      40          # Provincial retail sales tax
 0.01326 0.01326 0.01326 0.01326 0.01316 0.01406 0.02242 0.00626 0.00010 0.00550
 0.15257 0.15257 0.15257 0.15257 0.13057 0.24354 0.15684 0.13914 0.00013 0.29100
 0.17538 0.17538 0.17538 0.17538 0.16338 0.22635 0.13837 0.08953 0.00010 0.00605
 0.08125 0.08125 0.08125 0.08125 0.08424 0.07750 0.06300 0.08521 0.00009 0.07406
 0.08029 0.08029 0.08029 0.08029 0.07239 0.06953 0.05715 0.07306 0.00010 0.06512
 0.08293 0.08293 0.08293 0.08293 0.06684 0.05282 0.05581 0.00305 0.00008 0.06866
 0.00296 0.00296 0.00296 0.00296 0.00359 0.00197 0.00130 0.00171 0.00001 0.00141
 0.00997 0.00997 0.00997 0.00997 0.00934 0.00753 0.01018 0.01073 0.00024 0.01057
 0.00886 0.00886 0.00886 0.00886 0.01140 0.01421 0.00969 0.00879 0.00022 0.01017
 0.08363 0.08363 0.08363 0.08363 0.06777 0.00206 0.02368 0.04331 0.00004 0.00662
 0.08283 0.08283 0.08283 0.08283 0.35376 0.00201 0.02646 0.00544 0.00004 0.02263
 0.09406 0.09406 0.09406 0.09406 0.06143 0.00733 0.01685 0.01645 0.00064 0.02582
 0.08515 0.08515 0.08515 0.08515 0.07698 0.09175 0.07097 0.06762 0.00011 0.08368
 0.08160 0.08160 0.08160 0.08160 0.09371 0.08702 0.06739 0.06646 0.00008 0.07739
 0.08086 0.08086 0.08086 0.08086 0.08141 0.08654 0.06925 0.06538 0.00009 0.07740
 0.08238 0.08238 0.08238 0.08238 0.08320 0.08203 0.06751 0.05395 0.00011 0.07746
 0.08331 0.08331 0.08331 0.08331 0.09420 0.01711 0.07477 0.01461 0.00009 0.01935
 0.00067 0.00067 0.00067 0.00067 0.00054 0.00464 0.00740 0.00678 0.00006 0.00690
 0.05967 0.05967 0.05967 0.05967 0.05408 0.04822 0.02270 0.01925 0.00017 0.01865
 0.00821 0.00821 0.00821 0.00821 0.01031 0.00618 0.00623 0.00397 0.00011 0.00738
 0.00043 0.00043 0.00043 0.00043 0.00034 0.00124 0.00145 0.00173 0.00002 0.00059
 0.01581 0.01581 0.01581 0.01581 0.00875 0.10256 0.01323 0.00799 0.00025 0.01145
 0.02112 0.02112 0.02112 0.02112 0.02389 0.04246 0.03516 0.00786 0.00013 0.01465
 0.07207 0.07207 0.07207 0.07207 0.06970 0.08270 0.07019 0.04924 0.00005 0.10050
 0.07667 0.07667 0.07667 0.07667 0.07584 0.08081 0.06841 0.03319 0.00014 0.04053
 0.14145 0.14145 0.14145 0.14145 0.14506 0.01002 0.00841 0.00897 0.00012 0.01248
 0.04574 0.04574 0.04574 0.04574 0.04843 0.08112 0.03185 0.02851 0.00021 0.02790
 0.03739 0.03739 0.03739 0.03739 0.04921 0.01000 0.02035 0.01185 0.00019 0.01653
 0.08336 0.08336 0.08336 0.08336 0.08897 0.07353 0.06346 0.06354 0.00003 0.04449
 0.07581 0.07581 0.07581 0.07581 0.08182 0.07966 0.05424 0.06289 0.00007 0.07054
 0.07746 0.07746 0.07746 0.07746 0.08965 0.04561 0.05949 0.03563 0.00009 0.04247
 0.04765 0.04765 0.04765 0.04765 0.04967 0.02692 0.02058 0.02111 0.00016 0.01419
 0.00489 0.00489 0.00489 0.00489 0.00411 0.00745 0.00795 0.00733 0.00017 0.00929
 0.08402 0.08402 0.08402 0.08402 0.11465 0.08444 0.06428 0.06551 0.00008 0.07433
 0.07875 0.07875 0.07875 0.07875 0.07826 0.08018 0.07052 0.06623 0.00015 0.07777
 0.04826 0.04826 0.04826 0.04826 0.04245 0.00867 0.00918 0.00758 0.00008 0.01028
 0.06598 0.06598 0.06598 0.06598 0.07010 0.05898 0.07703 0.01556 0.00707 0.02343
 0.02430 0.02430 0.02430 0.02430 0.02547 0.02539 0.00705 0.00708 0.00018 0.01004
 0.01002 0.01002 0.01002 0.01002 0.01255 0.00805 0.00822 0.00735 0.00029 0.01300
 0.00000 0.00000 0.00000 0.00000 0.00000 0.00000 0.00000 0.00000 0.00000 0.00000
```

For our postulated poverty measure example --

```
EPMCO      18          # Experimental poverty measure cutoffs
 5600.0
 6210.0
 6530.0
 7050.0
```

## SUMMARY/CONCLUSION

It is useful to conclude by highlighting, but without redeveloping them in any detail, the general level key points relevant for adding less typical scalar parameters and non-scalar parameters to a model. In noting these points, we are assuming that the analyst is following

the general procedures outlined for scalar parameters. For example, it is taken as given that the analyst is working with COPIES of all the relevant files, and is performing all of the modifications in a task subdirectory dedicated to the analysis at hand. We also assume that the user has updated the project environment, and is following the appropriate "checklists" provided for the less typical parameters.

1. We recommend the "copycat" approach as a general way to proceed. Throughout this chapter we've provided concrete illustrations of the items a user might want to use as templates. Users should rarely need to employ the detailed material on `Mpu.h/Cpu.h/Apu.h` (definitions, manifest constants for max rows, and actual rows) and `Ampd.cpp` (`pmaddent` and `stradd`).
2. Advanced users may want to be aware of the special "services" available via the `pmaddent` arguments: the ability to specify printing formats, edit checks, and the maximum number of allowable rows or options.
3. Vectors can sometimes be much more efficient than a number of individually named scalar parameters. The SPSM provides for this capacity, though the user must supply additional information in the `pmaddent` call and be sure to provide another variable for the number of relevant rows, as well as a constant for dimensioning. We've offered several potential templates to facilitate the copycat approach.
4. In many respects, schedules are like a special case of vectors, applicable when one needs to look up a y-value, as a function of an x-value, from a fixed relationship.
5. Matrices (2-dimensional) are also possible. Some additional information, the number of columns, becomes necessary, but the matrix approach can be considerably more efficient than juggling multiple parallel vectors. Once again, the copy and modify approach is recommended.

## Glass Box Development: Adding New Variables

This chapter describes how to add new user-defined dependent variables to an SPSM glass box application. Thus, it shows how to address challenges such as those raised in the Quick Start example, where the user would like to have had a separate variable for the hypothetical Earned Income Tax Credit. The availability of user-defined dependent variables is even more important if the user is modeling some new program, e.g. an earnings supplement that could not be conveniently combined into any existing model dependent variable.

Structurally, this chapter covers all of the major issues and steps involved in adding new dependent variables to a model. Included in this chapter is an introductory overview of the process, and also a section that characterizes the major types of variables that the user may wish to add. An explanation follows of the critical `vardef` function that establishes the linkages between the user's source code and the rest of the SPSM and also describes how to use the `stradd` function to make the new variables' labelling available throughout the SPSM. We then introduce an illustrative extension of the Earned Income Tax Credit example used in the Quick Start example, which defines a new variable that will be available to the SPSM's

several output facilities. Following this are examples of the source code changes that the user has to make, and the descriptions of the compilation and validation of the resulting model.

## **OVERVIEW FOR ADDING VARIABLES**

In broadest outline, the key steps involved in adding new variables can be characterized as follows.

1. Decide what new dependent variables are needed, choose appropriate names and descriptions for them, and copy all of the relevant header and source code files over to the subdirectory in which the new model will be built.
2. Make the relevant changes to the project environment (identifying all of the appropriate source code files associated with the new dependent variables), and update `Adrv.cpp` (providing documentary text strings).
3. Make the necessary changes to `vsu.h` and `vsdu.cpp` to render the new dependent variables accessible throughout the SPSM model that will be created.
4. Supply new source code (in new or existing modules) to calculate the values for the new dependent variables.
5. Compile the new model and validate it for correctness.

The preceding points are, of course, only an overview. Section on adding parameters and the recapitulation section provide a much fuller description of the model creation process as a whole. This chapter, however, concentrates on those details especially relevant for the addition of new dependent variables.

## **DEPENDENT VARIABLE TYPES AND CHARACTERISTICS**

The SPSM provides users with the capacity to create three different types of user-defined dependent variables. All three types are scalars. The SPSM does not provide for vectors or matrices of dependent variables. The specific types are as follows:

1. Numeric analysis -- This is the most common type of user-defined dependent variable. It consists of a numeric (float) value that will be used as an analysis variable, e.g. tabulated as a cell entry in the control parameter XTSPEC. A good example of this type of dependent variable is the value of some new income-tested benefit that will be payable to a family.
2. Integer analysis -- Less frequently used, this type of dependent variable consists of an integer (int) value that will be used as an analysis variable. The primary use of this type of variable is export in SAS format, where an integer variable takes up fewer characters than a numeric analysis variable. Examples of this type of variable might be the minimum and maximum numbers of weeks that a family could be without earnings income during the year (as deduced from the labour-force variables for the family members, e.g. weeks without work and looking for work).

- Integer class -- this type of dependent variable consists of an integer (int) value that will be used as a classificatory variable, e.g. to define the categories for a classificatory variable in the XTSPEC parameter. This type of variable is particularly relevant when its values represent purely nominal categories, e.g. a classification of families by types.

A few other characteristics of user-defined dependent variables, individually and collectively, will be of considerable importance to the glass box user --

First, all user-defined dependent variables are defined at the level of the individual. Thus, the user must take care to assign values to "appropriate" individuals so that when the unit of analysis is at a higher level, say the census family level, the SPSM's roll-up algorithms will yield the desired results.

Second, the space allocated for such variables can handle approximately 50 variables. Violation of this limit can result in obscure errors that are difficult to track down.

### THE VARDEF AND STRADD FUNCTIONS AND THEIR ARGUMENTS

The vardef and stradd functions are absolutely critical to the capacity to create new user-defined variables and have them used properly throughout the rest of the SPSM. It is only via the information communicated via calls to these functions that the rest of the SPSM learns about the nature of the new variables and the documentary text that goes with them. This section documents first the vardef function, and then the stradd function.

The vardef function plays the same general role for user-defined variables that pmaddent does for user-defined parameters. There will be one vardef call for each variable that the user defines. Vardef defines the characteristics of the new variable so that the SPSM can link it into the same variables framework used by the SPSD/M's own database, analytic and classificatory variables. The vardef calls are always made in the vsdu.cpp function. The following short description of the function's arguments appears at about line 100 of that function --

```
*   vardef("_uvew",          <= the name of the variable, quoted, with '_'
*       IN,                 <= home structure (leave at 'IN')
*       im.uv.ew,          <= variable location (always in im.uv)
*       C_INT,             <= C-type (C_INT or C_NUM)
*       V_CLAS             <= type of variable (V_CLAS or V_ANAL)
*       );
```

We'll describe the nature of the vardef arguments one at a time, in order. Subsequent sections in this chapter provide specific illustrations for the use of both the vardef and stradd functions.

#### Vardef "Name" Argument (and Definition of Variable "Stem" Name):

The first argument gives the variable's name as a double-quoted text string. The user should always include an underscore as the first character after the initial double quote, and then the characters "uv" as the second and third characters to indicate the "user variable" status. The remainder of the name, i.e. everything after the "\_uv" prefix, is known as the variable's stem name. Generally speaking, this stem portion should be as informative and mnemonic as is feasible.

### **Vardef "Home Structure" Argument:**

The second argument indicates the structure in which the new variable resides. Because user-defined variables are ALWAYS defined at the individual level, the user should always enter this argument as an (unquoted) 'IN'.

### **Vardef "Variable Location" Argument:**

The third argument indicates the location of the variable (as regards the SPSM's data structures). The location is specified via three components, two of which are invariant. Specifically, the first portion of the location is ALWAYS equal to "im.uv" (but unquoted). This information tells the SPSM that the new variable is inside the user variable (uv) portion of the im structure (individual level model variables). The final portion of the location specification is the new variable's stem name, as defined above for the first argument.

### **Vardef "C-Type" Argument (C\_NUM & C\_INT):**

The fourth argument specifies the C language type of the variable. It will take on one of two values. Numerical analysis variables will use the entry "C\_NUM" (unquoted). Integer analysis and integer classification variables will use the value "C\_INT" (unquoted).

### **Vardef "Usage" (Type) Argument (V\_ANAL & V\_CLAS):**

The fifth and last argument specifies whether the SPSM is to treat the variable as an analysis variable (tabulatable) or a classificatory variable (categorical). It will take on one of two values. Both numerical and integer analysis variables will use the entry "V\_ANAL" (unquoted). Integer classification variables will use the "V\_CLAS" (unquoted).

The combination of the fourth and fifth entries tells the SPSM how many bytes of memory it needs to allocate for the variables. As noted above, the requirements are six bytes for a numerical analysis variable, three bytes for an integer analysis variable, and one byte for an integer classification variable.

We have already seen simple applications of the stradd function when we discussed the documentation of user parameters. The same function serves a similar purpose here, but in a more sophisticated fashion, since it is used to define both a short description of the user variables themselves, but also, in the special case of integer analysis and integer classification variables, the range of values and the textual labels associated with particular values of the variables. The vsdu.cpp file contains, at about line 110, capsule documentation for both the variable description and value label uses.

```
*   stradd("uvew",          <= the name of the variable, quoted
*           "Region"        <= a printing label for the variable
*           );
**  stradd("ew",           <= the stem name of the variable, quoted
*         "\tEast\tWest" <= string containing a label for each valid
*         );               level, preceded by a tab '\t' character.
```

As with the vardef function above, we shall take up the arguments in sequence. A complicating factor here is that the NUMBER OF stradd INVOCATIONS and structure of the stradd arguments depends on the type of variable for which stradd is being used. However, the number of stradd arguments is always constant at two. Favouring clarity over

brevity, we shall describe each of the three types (numeric analysis, integer analysis, and integer classification) individually.

### **Stradd Calls for Numeric Analysis Variables:**

Numerical analysis variables require only a single invocation of the stradd function. The first argument specifies the variable name. It is identical to that used for the first vardef argument, EXCEPT THAT THE LEADING UNDERSCORE PRESENT THERE IS OMITTED HERE.

The second argument for a numerical analysis variable is the (quoted) string that the SPSM will use when it needs to print a description of the variable.

For example --

```
stradd("uvnewben", "New Hypothetical Benefit");
```

### **Stradd Calls for Integer Analysis Variables:**

Integer analysis variable additions require two separate stradd invocations. The first invocation defines the label for the variable as a whole. The second invocation defines, via a set of labels for the individual integer values, the range of values for the variable.

In the first (variable label) invocation, the first argument specifies the variable name. It is identical to that used for the first vardef argument, EXCEPT THAT THE LEADING UNDERSCORE PRESENT THERE IS OMITTED HERE.

In the first (variable label) invocation, the second argument is the (quoted) string that the SPSM will use when it requires a description of the variable as a whole, e.g. in documenting a table.

In the second (value labels) invocation, the first argument is the STEM NAME for the variable; neither the underscore nor the leading "uv" string should be present.

In the second (value labels) invocation, the second argument is a quoted string that tells the SPSM how many categories are relevant. The string consists of the repeated pattern 'tx' where x always varies from zero to "one minus the total number of categories". Thus, for a variable having four categories, the second argument would take the form -- "t0\t1\t2\t3". The slash-t notation is the C language's standard way of denoting a tab character.

For example --

```
stradd("uvnputpp", "Number persons unemployed 2+ periods");  
stradd("nputpp", "\t0\t1\t2\t3\t4");
```

### **Stradd Calls for Integer Classification Variables:**

The stradd invocations for integer classification variables are identical to those for integer analysis variables WITH ONE CRITICAL EXCEPTION. In the second (value labels) invocation, the second argument is a quoted string that provides the textual labels for the several categories of the variable. In essence, the several, user-supplied, labels correspond to the integers 0 .. "categories minus 1" entries of the second stradd invocation for an

integer analysis variable. Thus, for example, the labels for “region” documentation might look as follows:

```
\tAtlantic\tQuebec\tOntario\tPrairies\tBritish Columbia
```

These labels, which may contain embedded blanks (since the tab characters serve as delimiters) would appear as labels when the user employed the SPSM's crosstabulation capacity or exported the new variable to a SAS file.

For example --

```
stradd("uvfamcat", "Nominal Family Income Category");
stradd("famcat", "\tVery Poor\tPoor\tNear Poor\tNon-Poor\tRich");
```

Beyond the descriptive definitions of vardef and stradd arguments, appearing about lines 100-115 of the vsdu.cpp function, vsdu.cpp also contains template combinations of the vardef and stradd calls for all three types of new variables. In typical SPSM fashion, users will normally find it convenient to modify copies of these templates when defining new variables. These templates appear at about lines 125-145 of vsdu.cpp.

```
* -----
* A numeric variable:
* -----
vardef("_xxxxxxx", IN, im.uv.xxxxxxxx, C_NUM, V_ANAL);
stradd("xxxxxxx", "Variable label");

* -----
* An integer analysis variable, with values 0 through 4:
* -----
vardef("_yyxxxxxx", IN, im.uv.yyxxxxxx, C_INT, V_ANAL);
stradd("yyxxxxxx", "Variable label");
stradd("xxxxxx", "\t0\t1\t2\t3\t4");
* -----
* An integer class variable, with values 0 through 4:
* -----
vardef("_yyxxxxxx", IN, im.uv.yyxxxxxx, C_INT, V_CLAS);
stradd("yyxxxxxx", "Variable label");
stradd("xxxxxx", "\tLABEL0\tLABEL1\tLABEL2\tLABEL3\tLABEL4");
```

## **THE EARNED INCOME TAX CREDIT EXAMPLE EXTENDED**

Although the preceding characterization of adding user-defined variables is complete from a definitional perspective, it is useful to see how the several steps look in practice. In this section we summarize the concrete example that the remaining sections will flesh out. In essence the example is a further extension of the Earned Income Tax Credit exploration introduced in Quick Start and subsequently enhanced with the addition of user-defined parameters.

Our explicit objective here is to provide a worked example that gives concrete illustrations of all three types of user-defined variables, and to do so without burdening the reader with the overhead that would inevitably be associated with a completely new example. In the service of this objective we have not hesitated to sacrifice some realism (as to institutional motivation and practice) in favour of a clean, specific example.

We extend the Earned Income Tax Credit example by adding the following three user-defined variables:



1. A numeric analysis variable: the new variable is the gross amount of Earned Income Tax Credit received; we'll name it "uveitc" (user variable, Earned Income tax credit). We shall assign this variable to the appropriate members of the eligible census families.
2. An integer analysis variable: the new variable is the number of children in the census family who fall under the prescribed age for census family eligibility for the Earned Income Tax Credit. We'll name the variable "uvnceitc" (user variable, number of children for Earned Income Tax Credit eligibility). We shall assign this variable to the head of the census family.
3. An integer class variable: the new variable categorizes the level of Earned Income Tax Credit received by eligible family members; we'll name the variable "uveitclvl" (user variable, Earned Income Tax Credit level). We shall use it primarily as a categorical variable for tables designed to validate our extensions to the Earned Income Tax Credit code. We shall assign this variable to eligible family members, based on the age cutoff.

As we proceed to the actual changes and coding needed to implement these new user-defined variables, we assume that the relevant files (`Adrv.cpp`, `vsu.h`, `vsdu.cpp`, `Agai.cpp`, `SPSMGL.vcproj`, `SPSMGL.sln`, etc) have been **COPIED** over to an appropriate new subdirectory; here we'll assume that it is named `GLASSEX3`, this being our third worked glass box example. Note that one more file will be required, based on the nature of this example, and that is the `Amemo1.cpp` file, which should be copied over from the `GLASS` subdirectory. The changes necessary to this file will be outlined later.

### **CHANGES TO PROJECT FILES AND `ADRV.CPP`**

We begin by including all the relevant files into the project and by changing the name of the executable file in Project: Setting: Links to `glassex3.exe`.

The changes to `Adrv.cpp` are simple, consisting entirely of (a) updating the short textual descriptions for the model and (b) indicating that `Agai` (rather than `gai`) is to be used for Earned Income Tax Credit calculations. Also the user should redirect `Adrv.cpp` to use `Amemo1` (rather than `memo1`), the changes to `Amemo1` will be discussed later.

Of the two descriptions, the `SPSM` displays the first on its opening screen, to tell the user about the nature of the alternative system. The `SPSM` outputs the second description as part of the `'.CPR'` (control parameter) documentation that it produces when it runs the model. Recall that the positioning of this text (in the screen and in the output file) prevents the use of descriptions longer than 20 characters. After adding the new descriptions, the relevant portion of `Adrv.cpp` (about line 80) appears as follows:

```

===== GLOBAL VARIABLE DEFINITIONS ===== */
/*global*/ char ALTNAME[IDSIZE+1] = "EITC New Vars Ex";
/* Give global string describing version of this module */
/*global*/ char FAR Tdrv[] = "EITC New Vars Ex"
#ifdef MSC
" [" __TIMESTAMP__ "]"
#endif
;

```

The altered line (about line 165) to indicate that the alternate driver uses Agai.cpp, rather than gai.cpp, appears as --

```
Agai(hh);          /* compute new guarantees, refundable credits */
```

The user must also alter the following line to redirect to the driver to the alternative memo1 function, the new line appears as –

```
Amemo1(hh);       /* compute disposable income, etc. */
```

Finally, compile a Debug version in Build:Start:Debug. The required links and compilations will be identified.

## CHANGES TO VSU.H

The file vsu.h serves to define the C language structure that holds the user-defined variables. The relevant portion of this file, copied from the SPSM\GLASS subdirectory, appears as follows:

```
typedef struct uv_ {
    NUMBER    uvdummy;          /* dummy variable */
} uv_;
```

We replace the uvdummy line by three lines that define our new variables, uveitc, uvnceitc & uveitclvl. These new lines indicate the types of the new variables. After the changes, the new portion of vsu.h appears as follows:

```
typedef struct uv_ {
    NUMBER    uveitc;          /* Earned Income Tax Credit amount */
    int       uvnceitc;       /* Number Children for EITC eligibility */
    int       uveitclvl;     /* Earned Income Tax Credit level */
} uv_;
```

Note the naming conventions used here. The typedef statement requires that the variables be prefaced with the uv prefix, but does NOT employ the leading underscore used in the vardef statements that appear later in the changes to vsdu.cpp.

One need not always modify, as we have done here, the GLASS version of vsu.h. If an already existing (user-defined) version of vsu.h contains user-defined variables that are to be retained, simply make a copy of that existing file and modify it as appropriate. Recall, however, that there is an overall limit of 200 bytes per individual for the user-defined variables.

## CHANGES TO VSDU.CPP

The necessary changes to the copy of vsdu.cpp consist of the vardef and stradd invocations that allow the SPSM to access the new variables and their documentation. Given the simplicity of these invocations, we use the example templates from the beginning of the file. We shall make these invocations as the end of the vsdu.cpp file, just before the final 'DEBUG\_OFF("vsdu");' statement. The additions appear as follows:

```
/* uveitc: (Analysis) Earned Income Tax Credit amount */
vardef("_uveitc", IN, im.uv.uveitc, C_NUM, V_ANAL);
stradd("uveitc", "Earned Income Tax Credit amount");
```

```

/* uvnceitc: (Analysis) number of children for EITC eligibility */
vardef("_uvnceitc", IN, im.uv.uvnceitc, C_INT, V_ANAL);
stradd("uvnceitc", "# Children for EITC eligibility");
stradd("nceitc", "\t0\t1\t2\t3\t4\t5\t6\t7");
/* uveitclvl: (Class) Earned Income Tax Credit level */
vardef("_uveitclvl", IN, im.uv.uveitclvl, C_INT, V_CLAS);
stradd("uveitclvl", "Earned Income Tax Credit level");
stradd("eitclvl", "\t0 EITC\tReduced EITC\tFull EITC");

```

Notice the second stradd call for each of the two integer variables, and the omission of the uv prefix in that (second) call that defines the number of cases (integer analysis variable) or the category labels (integer classification variable).

## **CHANGES TO AGAI.CPP (OR, MORE GENERALLY, ANY NEW SUBSTANTIVE SOURCE CODE)**

The preceding tasks have been preliminary to our central task, revision of `Agai.cpp` to reflect the new calculation of the Earned Income Tax Credit. We are using `Agai.cpp` here, but, more generally, at this stage, the user is ready to write/modify the source code necessary to make the desired changes to the calculation of SPSM variables, whatever modules those changes may involve. We'll illustrate the changes for our Earned Income Tax Credit example one portion at a time, showing for each portion what the unmodified `Agai.cpp` file looks like, and then how we have changed it to add our desired variables.

### **Identifying String**

Documentation is important. As we proceed through the `Agai.cpp` file for our changes, we first update the description. Where the GLASS version of `Agai.cpp` provides (at about line 48) the placeholder description --

```
/*global*/ char FAR Tgai[] = "Untitled"
```

we substitute a more informative description:

```
/*global*/ char FAR Tgai[] = "EITC Vars Version"
```

### **Local Variables**

Intermediate (local) variables can be very useful. Where the original GLASS version of `Agai.cpp` does not use any local variables, we will add some local variables in the Extended Quick Start Example, as illustrated below. The initialization of NUMBER/float variables with ZERO is recommended.

```

/* user-defined intermediate (local) variables in support of glass box example 3
(user-defined SPSM variables) */
NUMBER eitc = ZERO; /* amount of earned income tax credit */
int nceitc; /* number of children for EITC eligibility */

```

### **Calculate and Assign the New Model Variables**

We are now ready to calculate the new variables, and to assign them to the appropriate user-defined SPSM variables. For our `Agai.cpp` example, we seek to calculate the amount of the possible refundable tax credit. We do so immediately after all federal and provincial taxes have been defined in the SPSM, but before disposable income been assigned as outputs from the `Amemo1` routine.

We will also keep the initial loop that assigns a 0 value to everyone in the household for the

variable `imiosa`. We no longer will need `imiosa` as a dedicated variable `uveitc` has been created to represent the Earned Income Tax Credit amount. If the user has simply commented out the initial loop in the earlier phases of this example for `Agai.cpp`, then one simply revives the code. If the user removed the loop in the earlier versions, then simply copy the loop from the GLASS version of `Agai.cpp`.

```

void Agai(
    P_hh hh
)
{
    register P_in in;
    register int ini;
    register P_in ineld;
    register P_in inspo;
    register P_cf cf;
    register int cfi;
    int nceitc;
    NUMBER cfempinc;
    NUMBER eitc;

    DEBUG_ON("Agai");

    /* process persons in household */
    for (ini=0, in=&hh->in[0]; ini<hh->hhnin; ini++, in++) {
        in->im.imiosa = ZERO;
    }

    if (MP.UM.EITCFLAG) {
        /* process each census family in household */
        for (cfi=0, cf=&hh->cf[0]; cfi<hh->hhncf; cfi++, cf++) {
            /* initialise elder's pointer */
            ineld = cf->cfineld;

            /* calculate elder's contribution to family net income */
            cfempinc = ineld->id.idiemp;

            if (cf->cfspoflg) {
                DEBUG1("%s spouse present\n");
                inspo = cf->cfinspo;    /* spouse's in pointer */

                /* add spouse's net income to family net income */
                cfempinc += inspo->id.idiemp;
            }

            nceitc = 0;

            /* process children in census family */
            for (ini=0, in=cf->cfinch; ini<cf->cfnchild; ini++, in++) {

                if (in->id.idage > MP.UM.EITCAGE) {
                    DEBUG2("%s discarding old child, aged %d\n",
in->id.idage);
                    continue;
                }
            }
        }
    }
}

```

```

    }

    /* Count up remaining children */
    nceitc++;
}

eitc = 0;
if (nceitc > 0 ) {
    if ( cfempinc < MP.UM.EITCTPMX ) {
        eitc = MP.UM.EITCPIR * cfempinc;
    }
    else if ( cfempinc <= MP.UM.EITCTPRC ) {
        eitc = MP.UM.EITCMAX;
    }
    else {
        eitc = nneg(MP.UM.EITCMAX - ((cfempinc -
MP.UM.EITCTPRC) * MP.UM.EITCPOR));
    }
}

/* process persons in census family */
for (ini=0, in=cf->cfin; ini<cf->cfnpers; ini++, in++) {

    if (in->id.idage > MP.UM.EITCAGE) {
        in->im.uv.uveitc = eitc;
        if (eitc > 0) {
            if (eitc == MP.UM.EITCMAX) {
                // individual assigned a maximum EITC amount
                in->im.uv.uveitclvl = 2;
            }
            else {
                // individual assigned a reduced EITC amount
                in->im.uv.uveitclvl = 1;
            }
        }
        else {
            // individual did not receive any EITC amount
            in->im.uv.uveitclvl = 0;
        }
    }
    // assign the number of children under the age cutoff
that determines family eligibility
    // to the head of the census family
    if (in->id.idcfrh == 0) {
        in->im.uv.uvnceitc = nceitc;
    }
}
}

    }

    DEBUG_OFF("Agai");
}

```

### Changes to Amemo1.cpp

One addition has to be made to Amemo1 . cpp to include the Earned Income Tax Credit in the value of federal transfers – imftran, which is in turn included in disposable income. From the code assignment in Amemo1 . cpp, the original assignment of imftran is as follows:

```
in->im.imftran = in->im.imioas + in->im.imiotg
                + in->im.imigis + in->im.imispa
                + in->im.imfcben + in->im.imicqp
                + in->im.imiuib + in->im.imfstc
                + in->im.imqtar + in->im.imiosa
                + in->im.imfortc + in->im.imiuccbr
                + in->im.imheatrl + in->im.imfecb ;
```

One addition needs to be made to imftran, that is to add the value of the new user variable ‘uveitc’ since the Earned Income tax credit program now has it’s own dedicated variable in the glass box code. It was not necessary to edit Amemo1 . cpp in the beginning stages of this example, since we used the built-in variable imiosa, which is already included in imftran. So for this purpose, the new variable is added just after ‘imiosa’ and ‘imiosa’ is reset to 0 for everyone.

```
in->im.imftran = in->im.imioas + in->im.imiotg
                + in->im.imigis + in->im.imispa
                + in->im.imfcben + in->im.imicqp
                + in->im.imiuib + in->im.imfstc
                + in->im.imqtar + in->im.imiosa
                + in->im.imfortc + in->im.imiuccbr
                + in->im.imheatrl + in->im.imfecb
                + in->im.uv.uveitc ;
```

## Compilation

We should debug the model and test if it work properly and then compile the new model GLASSEX3 . EXE.

## VALIDATION

Once the compilation is complete and the GLASSEX3 . EXE file exists, the user can validate it to check whether the logic is performing as was intended. Since validation was illustrated in some length in the earlier stages of this example, we include here only one illustrative set of crosstabulation outputs. In everyday operation, the user will want to ensure the correctness of the model before proceeding on to make production runs of the desired tables.

The mini-validation here consists of a new set of tables to test the glass box variables. For this validation, we’ll test the credit as per its original design, that is an income tested tax credit of \$1200 for individuals in eligible census families, which is determined by the presence of children under the prescribed age limit. The relevant XTSPEC appears as follows:

```
XTSPEC
IN:{uveitc, gainer:S=3, nochange:S=3} * agegrp+;
IN:empigrp+ * {uveitc, uveitc/gainer:L="Average Benefits",
```

```

                gainer:S=3, nochange:S=3};
IN:dispgrp+ * {uveitc, gainer:S=3, nochange:S=3, scfrecs};
CF:uvnceitc+ * {uveitc};
IN:uveitclvl+ * {uveitc, gainer:S=3, nochange:S=3} * agegrp+;

```

The first 3 tables are similar to the earlier table specifications from `glassex1`, along with the UVAR statements, with the replacement of `uveitc` for `imiosa` to illustrate the use of a user-defined variable as an analysis variable. Note that the usage is just the same as if the variables had been part of the original SPSM, even to the ability to use the "+" qualifier to indicate the aggregation across a categorical variable's dimension. The table results should be identical to that from `glassex1`.

Note that the glass box results were produced using a previous version of the SPSM model.

Table 1U: Selected Quantities for Individuals by Age

Quantity	Min-20	21-64	65-Max	All
Earned Income Tax Credit amount (M)	0.0	804.1	3.7	807.9
Received EITC Flag (Gainer) (000)	0.0	1226.7	7.4	1234.0
Unaffected by EITC Flag (000)	8146.0	17946.5	4184.0	30276.6

Table 2U: Selected Quantities for Individuals by Wages & salaries Group

Wages & salaries Group	Earned Income Tax Credit amount (M)	Average Benefits	Received EITC Flag (Gainer) (000)	Unaffected by EITC Flag (000)
Min-0	201.0	641.2102	313.4	14751.3
1-8000	246.1	594.5951	413.9	3191.6
8001-12000	143.0	1006.2308	142.1	1073.4
12001-24000	214.6	597.1696	359.3	2556.5
24001-Max	3.2	608.0466	5.2	8703.8
All	807.9	654.6415	1234.0	30276.6

Table 3U: Selected Quantities for Individuals by Base disposable income group

Base disposable income group	Earned Income Tax Credit amount (M)	Received EITC Flag (Gainer) (000)	Unaffected by EITC Flag (000)	SLID Records
Min-5000	73.7	139.3	9226.9	19744
5001-10000	94.3	151.2	2547.6	5722
10001-15000	136.1	202.1	2987.8	7607
15001-20000	173.8	237.2	2987.4	8349
20001-25000	163.0	241.8	2440.6	6443
25001-30000	72.7	118.2	2309.0	5650
30001-35000	39.2	59.9	1888.1	4544

35001-40000	17.5	27.8	1421.2	3378
40001-45000	9.5	12.0	1041.9	2378
45001-Max	28.2	44.5	3426.1	7311
+-----+-----+-----+-----+-----+				
All	807.9	1234.0	30276.6	71126
+-----+-----+-----+-----+-----+				

The fourth table demonstrates the use of a user-defined variable as a classification variable. Here we use the CF: qualifier to output the amounts of EITC to census families by the number of children that were used to determine the family's eligibility. In the Agai.cpp module, we assigned the uvnceitc to the head of the census family, thus that table would make more sense to be reported at the census family level. This table provides one more layer of confidence in the code structure as no Earned Income Tax Credits are being paid to census families without any eligible children.

Table 4U: Earned Income Tax Credit amount (M) for Census Families by # Children for EITC eligibility

# Children for EITC eligibility	Earned Income Tax Credit amount (M)
0	0.0
1	340.4
2	296.3
3	116.9
4	37.8
5	13.1
6	3.4
7	0.0
+-----+-----+	
All	807.9
+-----+-----+	

The final table provides an example of the use of a user-defined variable as a classification variable with defined levels. Here we output the level of Earned Income Tax Credit by the level of the credit (0, reduced credit, full credit) at the individual level. Here we repeated the structure of the first table and used the user-defined classification variable as an extra dimension. It confirms further that the code is working as intended as. The first table in the series confirms that no EITC benefits are paid out to individuals with the classification variable 'uveitc lvl' set to '0 EITC'. The second table in the series outputs the number of individuals who have received a reduced EITC benefit, and there are no individuals in this table slice that are unaffected as they have all received at least some amount of Earned Income Tax Credit. The third table in this series includes only those individuals who received the full EITC amount. We can see that the majority of benefit recipients qualified



for a reduced EITC amount and not the maximum benefit of \$1200. The final table slice in this series is identical to the Table 1U, which is a rollup of the 3 levels of EITC benefit amounts.

Table 5U: Selected Quantities for Individuals by Earned Income Tax Credit level and Age

Quantity	Earned Income Tax Credit level = 0 EITC			
	Age			
	Min-20	21-64	65-Max	All
Earned Income Tax Credit amount (M)	0.0	0.0	0.0	0.0
Received EITC Flag (Gainer) (000)	0.0	0.0	0.0	0.0
Unaffected by EITC Flag (000)	8146.0	17946.5	4184.0	30276.6

Table 5U (cont.): Selected Quantities for Individuals by Earned Income Tax Credit level and Age

Quantity	Earned Income Tax Credit level = Reduced EITC			
	Age			
	Min-20	21-64	65-Max	All
Earned Income Tax Credit amount (M)	0.0	608.7	2.7	611.4
Received EITC Flag (Gainer) (000)	0.0	1063.8	6.6	1070.4
Unaffected by EITC Flag (000)	0.0	0.0	0.0	0.0

Table 5U (cont.): Selected Quantities for Individuals by Earned Income Tax Credit level and Age

Quantity	Earned Income Tax Credit level = Full EITC			
	Age			
	Min-20	21-64	65-Max	All
Earned Income Tax Credit amount (M)	0.0	195.4	1.0	196.4
Received EITC Flag (Gainer) (000)	0.0	162.8	0.8	163.7
Unaffected by EITC Flag (000)	0.0	0.0	0.0	0.0

Table 5U (cont.): Selected Quantities for Individuals by Earned Income Tax Credit level and Age

Quantity	Earned Income Tax Credit level = All			
	Age			
	Min-20	21-64	65-Max	All
Earned Income Tax Credit amount (M)	0.0	804.1	3.7	807.9
Received EITC Flag (Gainer) (000)	0.0	1226.7	7.4	1234.0
Unaffected by EITC Flag (000)	8146.0	17946.5	4184.0	30276.6

+-----+-----+-----+-----+-----+

Once the validation is complete, the user will proceed to the production of the desired tables and other outputs.

## **SUMMARY/CONCLUSIONS**

We summarize this chapter's key points by providing a checklist of the main items required to add new user-defined variables to an SPSM model.

1. Plan the desired changes "on paper". Choose the new variable names and lay out the logic by which they will be derived. Ascertain which specific substantive source code files will be affected (e.g. `Agai.cpp`, `Amemol.cpp`). Choose a subdirectory for the new model, creating it if necessary.
2. Copy over the relevant files to the subdirectory where the work will be done.
  - The files `SPSMGL.sln`, `SPSMGL.vcproj`, `Adrv.cpp`, `vsu.h`, and `vsdu.cpp` will always be needed, along with the relevant substantive files, e.g. the `Agai.cpp` and `Amemol.cpp` file of our example.
  - The files `mpu.h` and `Ampd.cpp` may also be needed depending on whether parameters are to be added at the same time.
3. Update project and change the name of the output file.
4. Update `Adrv.cpp`.
  - Insert appropriate short descriptions for the two documentary string arguments (`ALTNAME` and `Tdrv`).
  - Change the function calls to refer to the alternate versions of the tax/transfer calculation functions, e.g. `Agai(hh)` rather than `gai(hh)`.
5. Update `vsu.h`. Inside the 'uv\_' structure, indicate the types and names of the new user-defined variables. Remember to use the 'uv' prefix, but to omit any leading underscore.
6. Update `vsdu.cpp`.
  - For each new variable, provide a `vardef` function call to define the nature of the variable to the SPSM.
  - Also for each new user-defined variable, invoke `stradd` to provide a variable description (text string) for the variable.
  - For each integer variable, analysis or classificatory, invoke `stradd` a second time (using just the stem name) to provide a list of labels for the integer values of the variable. Remember that for the analysis variables these only indicate the number of categories (from 0 to n), while for integer classification user-defined variables, the labels are text of the user's choosing.

7. Make the necessary changes to the substantive tax/transfer routines. Consider using intermediate variables to simplify things. Be careful to perform appropriate initializations and to assign the derived values to an appropriate individual.
8. Compile the new model. Don't forget to validate it before using it for any serious production work.

## Changing Base and Variant Data Variables

This chapter describes how users can, when appropriate, change values in the SPSD/M database for the analysis of policy options. Such changes stand in contrast to the changes in model logic, parameters and dependent variables described in previous chapters. Here, we are looking at changes to the data used as input by the tax/transfer algorithms rather than to the logic of those algorithms. The kinds of changes discussed here are temporary. They affect the values "seen" by the user's model in a particular run, but they do not affect the values actually stored in the SPSD itself.

Typically, but not exclusively, the user's database changes will involve dollar-denominated amounts -- income or deduction items. The user might wish to grow or shrink income from a particular source, e.g. shrinking interest income to reflect an assumption about falling interest rates. However, the user might also want to alter a non-income variable, e.g. the school attendance variable for older children in selected families.

For SPSM models that simulate two (base and variant) tax/transfer systems, an important distinction is whether the changes affect the values as "seen" by the user's entire model, or by just one of the (base or variant) systems within the model. This distinction is so important that we have organized the structure of this chapter around it. Note, however, that the distinction is irrelevant for models that simulate only a single tax/transfer system. The procedures recommended here encourage the user to apply the single system approach whenever it is feasible.

The following section describes how to make alterations to the data right after the SPSM has read it for a model run. The changes discussed there will naturally affect ALL of the tax/transfer systems appearing in the model. The section describes two sub-cases -- In the first sub-case, the user makes the data adjustments via the SPSM's built-in data-aging facilities. In the second, more demanding, sub-case, the user crafts his/her own adjustment logic. This second sub-case may involve the definition of new data-adjustment parameters for the model. The first section indicates where and how to make "single system" changes, and provides a detailed worked example.

The subsequent section, in contrast, describes changes that affect only a single system (base or variant) within an SPSM run. It explains how the use of the SPSM's "results file" facility can often turn this case into the simpler "single system" as described earlier on. However, for instances in which the results file approach is impossible or inconvenient, this section also includes a description of where and how to make the necessary changes. It concludes with a worked example of how to implement system-specific database adjustments.

### **MAKING CHANGES THAT AFFECT ALL TAX/TRANSFER SYSTEMS IN A MODEL**

This section describes how to make data changes that affect all of the tax/transfer systems in an SPSM model. It is appropriate both when the model has only a single tax/transfer system and when the model has two systems, but the user wants the data changes to affect both of them.

This section first examines the SPSM's built-in data-adjustment facilities. Under this method, the user assigns values to existing adjustment parameters via API (Database Adjustment Parameter Include) files.

This is followed by adding new data adjustment algorithms. For this type of adjustment, the user will define the new logic in the `adju.cpp` file, and will probably define new parameters via changes in the `apu.h` and `apdu.cpp` files. The user may also wish to define new dependent variables to assist in model validation.

Lastly a detailed worked example for this second sub-case is presented followed by a checklist for making this "global" data adjustment type of change.

### **Typical Income and Population Growth Changes Via API Files**

The design of the SPSD/M already anticipates the user's typical data-aging needs. The `\SPSD` subdirectory includes a number of files with names of the form `BAxx_yy.APR` that instruct the SPSM to age the data, other than the underlying demographic structure, from year `XX` to year `YY`. Thus, file `BA09_10.APR` contains the aging parameters to age the SPSD's non-demographic variables from 2009 to 2010.

If the substance of the parameters in these files is acceptable to the user's needs, then the data aging is straightforward. The user enters the name of the "most nearly correct" file as the control parameter file's `INPAPR` parameter. Any necessary changes to these parameter values are then implemented via an ".API" (Database Adjustment Parameter Include) file or on the fly if using Visual SPSM .

The *Parameter Guide* provides the authoritative description of these parameters. However, it is useful here to characterize broadly the extensive control they provide.

Some parameters specify how imputed/converted incomes are to be treated (i.e. ignored or either of two synthesis methods adopted). A large block of parameters governs the "removal" of commodity taxes from family expenditures.

Another parameter block provides the low-income cutoffs for families. It permits the user to specify a set of "poverty thresholds" for economic families, with the particular thresholds varying by family size and the size of place of residence. Probably of most value to a typical user, though, is the large set of growth factors for the SPSD's dollar-denominated data variables: incomes, deductions, and expenditures. Virtually every such variable has its own growth factor.

The SPSD/M also provides for convenient demographic aging of its underlying population. The SPSD directory's ".WGT" files provide the user with the capacity to adjust the population base throughout the interval of the years modelled.

## Changes Involving New Logic For `adju.cpp`

The flexibility provided by the aging parameter ("`.APR`" & "`.API`") and population aging ("`.WGT`") files will often be sufficient for the user's needs. However, in some circumstances, the user will wish or need to exercise more direct control over the data to be used for a simulation. A few examples will indicate the scope of what is possible. The reader should appreciate that the focus of these examples lies more in quickly conveying that scope than in maintaining a strict, policy-oriented realism.

1. The user could increase the average education level by adjusting the "idedlev" variable for selected individuals, perhaps resulting in a distribution of educational attainments that falls in line with some exogenous forecast.
2. The user might wish to grow some income or transfer amount by a factor that is a function of the unit's characteristics. E.g., based on the assumption that investors' portfolios differ as a function of investor age and income, a user might be unwilling to model the effect of an increase in interest rates by growing everyone's interest income using the same proportion. Instead, a smaller factor might be applied to those individuals felt likely to be conservative and/or to have portfolios that turn over more slowly. This type of assumption would treat such families as being unable to benefit as quickly from the higher interest rates.
3. A user might wish to model greater labour force participation by changing the array of labour force variables relevant for individuals in the SPSD (weeks worked, paid-employment earnings, employment insurance variables, etc.). Changes in such a wide variety of related variables would only be done after considerable, comprehensive planning.
4. At the extreme, a highly experienced, knowledgeable SPSM user could even alter the household/family structure of the SPSD, modeling a baby boom by adding "synthetic children" to appropriate families in the database.

The `adju.cpp` function, found in the `\SPSM\GLASS` subdirectory, is the means by which the user can add new data aging logic to SPSM models. That `adju.cpp` function is called immediately after the SPSM has read in each household, and before any transfers or memo variables have been computed. The user can insert the logic for his/her own changes immediately after the "adj(hh)" invocation that the SPSM uses to carry out its own data aging, i.e. its built-in application of the income growth parameters specified in the relevant "`.APR`" and "`.API`" files.

For the implementation of new data aging logic, users may need to define new intermediate variables (including counters, pointer variables, etc.) and/or to define new, custom, data adjustment parameters. The next subsection describes the general procedure for adding such new data adjustment parameters, with the attendant specific changes developed in the worked example that follows it.

### Adding New Database Adjustment Parameters

The addition of new user-defined database parameters closely parallels that of new model parameters as described in previous chapters. However, some minor differences are relevant.

(1) SPSM models have only a single database adjustment parameter file (extension ".APR"); they may have either one or two model parameter (extension ".MPR") files, depending on whether they model one or two transfer systems. (2) Correspondingly, users supply the values of user-defined adjustment parameters in ".API" (Database Adjustment Parameter Include) files that amend standard ".APR" files, rather than via ".MPI" (Model Parameter Include) files that amends standard ".MPR" files. (3) New adjustment parameters are defined in the `apu.h` (header) file rather than the `mpu.h` header file used for model parameters. (4) Similarly, the function calls that make the parameters available to the rest of the model occur in `apdu.cpp`, rather than the `ampd.cpp` file used for model parameters. However, the structures of the relevant `pmaddent` and `stradd` calls are exactly identical. Note, though, that certain arguments to these functions differ between adjustment and model parameters. The worked example highlights these differences. (5) Finally, the logic changes proper are defined in `adju.cpp`, rather than (typically) the individual tax/transfer functions, such as `Atxcalc.cpp`, that are relevant for changes to the tax/transfer calculation logic of a model.

We note in passing that the SPSM's control parameters follow a similar parallel structure, but, even in glass box applications, users do not need to `DEFINE` new control parameters. Instead, they simply alter the values of existing control parameters.

### **A Worked Example**

Our hypothetical user, seeking to reflect a response to some change in federal income tax treatment, wants to grow RRSP contributions in a model. S/he wants the growth to apply either for a single system to be analyzed, or for both the base and variant systems in a comparative model. However, this user is not willing to assume that everyone's contributions grow by the same rate, and wants to simulate disproportionate growth as a function of income. The main focus of the model is assumed to lie elsewhere in the tax/transfer system. That is, the user has no special interest in the impacts of the RRSP increases themselves. Rather, the user just wants "better" representations of the deduction amounts to be used in all of the calculations for the relevant transfer system(s).

To make the example more precise, assume that the user wishes to grow existing contributions by  $x\%$  for each (whole or partial) slice of \$10,000 of paid employment earnings and self employment earnings over an initial base amount of \$20,000. Thus, an individual with \$45,000 in earnings would see his/her RRSP contribution grown by a factor of  $(1.0 + 3x)$ , where  $x$  is a new user-defined parameter. This growth will be **IN ADDITION TO, AND COMPOUNDED WITH**, any growth induced via the standard SPSM growth parameter for RRSP contributions, `GFRRSP`.

In a possibility **NOT** developed here, the user might also have induced the presence of RRSP contributions for individuals who reported zero such contributions. The example developed later provides an illustration of this sort of synthesis of dollar-denominated amounts.

In the remainder of this subsection, we track the individual steps involved in implementing this conditional growth (beyond the growth implemented via the adjustment parameter GFRRSP). We assume that the user has created the subdirectory GLASSEX4 for the purpose, and "COPIED IN" all of the relevant files. (For example, SPSMGL.sln, SPSMGL.vcproj, apu.h, apdu.cpp, and adju.cpp, plus the SPSM parameter files relevant for running the new model.) In this directory the user will create an ".API" file to provide a value for the new user-defined parameter.

Because the parameter addition process for adjustment parameters so closely parallels the procedure described in previous chapters, and for model parameters, our commentary on these changes is kept to a minimum. The user is assumed to have modified the project to include all the relevant files and changed the output name of the compilation to GLASSEX4.EXE

We include the adjustment documentation in the relevant string defined in adju.cpp as described below.

#### (A) Changes to apu.h

We begin by defining a user-defined parameter for the user-defined RRSP contributions growth factor, the "x" factor in the description above. As a mnemonic, UDGFRASP (User-Defined Growth Factor, RRSP contributions) seems appropriate.

The additions to apu.h indicate the kind of parameter being defined. They go just before the function prototype specifications, replacing the dummy user adjustment parameter UADUMMY in the apu.h code.

```
typedef struct UA_ {
int UADUMMY;          /* dummy entry */
}
UA_;
```

In our example, we replace the single UADUMMY line with --

```
NUMBER UDGFRASP;     /* User-defined growth factor for RRSP Contr. */
```

#### (B) Changes to apdu.cpp

In the apdu.cpp function we add invocations to the pmaddent and stradd functions to give the broader SPSM access to the value of the new parameter. The details of these functions appear in previous chapters. We make the additions at the end of the apdu.cpp function, right before the statement --

```
DEBUG_OFF("apdu");
```

Our two invocations look as follows:

```
pmaddent(pap, "UDGFRASP", (char *)&AP.UA.UDGFRASP, NULL, P_SCL, C_NUM, 0, 0,
NULL, 0);
```

and

```
stradd("UDGFRASP", "User-defined growth factor for RRSP Contr.");
```

The explanatory text at the beginning of `apdu.cpp` function describes the AGING-ORIENTED arguments for `pmaddent` and `stradd`. It also provides the templates for our utilization here (a scalar parameter).

There are two critical differences in the `pmaddent` utilization as compared with the definition of new model parameters. (1) The first argument is `pap` rather than `pcp`. (2) The third argument differs in that the new parameter resides in the UA (User Adjustment) structure within the SPSM's AP (Adjustment Parameter) structure. This stands in contrast to the "&MP.UM" reference used for user-defined model parameters (User Model within Model Parameters).

### (C) Changes to `adju.cpp`

The first change updates the documentary text string relating to data aging. The original SPSM\GLASS function defines this string at about line 53 as

```
/*global*/ char AGENAME[IDSIZE+1] = "Unnamed";
```

We modify it here to read --

```
/*global*/ char AGENAME[IDSIZE+1] = "RRSP Contr(Earnings)";
```

With the parameter value available throughout the SPSM, we make the source code additions to implement the RRSP contribution growth. The first thing we need is some local variables to aid us in stepping through the individuals in the household being analyzed and possibly assigning modified RRSP contributions. Thus, we add the following four declarations to the `adju.cpp` function, inserting them just after the function's opening brace.

```
NUMBER earn;          /* total paid and self-employment earnings */
int group;            /* number of UDGFRSP multiples to use */
register P_in in;     /* pointer to data for current person */
int ini;              /* persons processed */
```

For the adjustment assignments themselves, the relevant location is near the very end of the `adju.cpp` function, inside the code segment --

```
    DEBUG_ON("adju");
    /* Just call the standard adjustment algorithm */
    adj(hh);
    DEBUG_OFF("adju");
```

**Our addition goes between the `adj(hh);` and `DEBUG_OFF("adju");` statements.**

```
/* Grow RRSP contributions as a function of total earnings */

for (ini=0, in=&hh->in[0]; ini<hh->hhnin; in++, ini++) {
    if (in->id.idrrsp == (NUMBER)0.0) {
        continue;
    }
    earn = in->id.idiemp + in->id.idise;
    if (earn <= (NUMBER)20000.0) {
        continue;
    }
    group = (int) (ONE+(earn-(NUMBER)20000.0)/(NUMBER)10000.0);
    in->id.idrrsp*=(ONE+AP.UA.UDGFRSP*(float)group);
}
```

The new code, headed by an explanatory comment, breaks out into components that are



relatively straightforward.

- (1) The control portion of the "for" statement has been copied, in its entirety, from the `memo1.cpp` function (computing totals for individuals) in the `SPSM\GLASS` subdirectory. It steps across the individuals in the household. The local variables defined earlier are used in this stepping.
- (2) Growing RRSP contributions multiplicatively is not meaningful if there are none to begin with. Thus, the "if-continue" statement of the next three lines skips the remainder of the four statements if the individual has no RRSP contributions. The typecast "NUMBER," here and later, indicates the user's intentions as regards variable types; it prevents compiler warnings.
- (3) If RRSP contributions are positive, the next line calculates the individual's earnings from paid employment and from self-employment. If the total does not exceed \$20,000, then the remainder of the for statement is skipped; Another "if-continue" statement performs this function.
- (4) The assignment to the "group" variable computes the number of multiples of UDGFRRSP relevant for the growth. The final statement in the body of the loop applies the growth via a multiplicative assignment. These two statements will only be executed if some growth is appropriate. The (int) and (NUMBER) casts they contain indicate the user's explicit intentions as to variable type conversions; they serve to prevent meaningless warnings during the compilation stage.

#### (D) Compiling the model enhancement

The model should be debugged before the compilation of `GLASSEX4.EXE` executable file. Only then can the model be run for validation testing and production work.

#### (E) Providing a parameter value

For any particular run of the model, the user must provide a value for the new parameter, e.g. a value of 0.01. Normally the user will do this "on the fly" during the run of the new model, or via an ".API" (Database Adjustment Parameter Include) file that will modify the contents of the APR file specified in the model's control file ("`.CPR`"). In our example, the ".API" file would consist of the single line --

```
UDGFRRSP      0.01
```

if no existing adjustment parameters were to be modified.

#### (F) Validating the model

Before using the model at all seriously, the user would want to validate the model to be sure it is performing as intended. Though we shall not carry out such a validation in detail here for reasons of space, normally one would generate a few selected tables for different runs, checking to ensure that the model produces the expected results. For example, inputting a UDGFRRSP factor of zero should leave the total amount of the RRSP unchanged.

Similarly, a small value, say 0.01, should have a small or zero effect on low-income units, but should have a larger effect on higher income units. A table, defined at the level of the individual, that showed the increase in the RRSP contributions variable as a function of individual earnings would go a long way toward deciding whether the algorithm yields the right amount of RRSP increase. It could be generated by using a results file based on the unmodified database, and comparing numbers of individuals and amounts of RRSP contributions to the counterparts of these variables after the new RRSP contribution aging.

An example of the results, using the adjustment parameter UDGFRSP set to 0.01 would be as follows:

	Before Growth	After Growth	Difference
RRSP Contributions (M\$)	11,134.3	11,329.2	194.9
Federal Income Tax (M\$)	41,173.3	41,118.0	55.3
Prov. Income Tax (M\$)	24,190.6	24,160.5	30.1

Total RRSP contributions have risen by about 1.75%, and federal and provincial income taxes have correspondingly dropped by somewhat less than the amount of new RRSP contributions.

### **Checklist for Changing Database Variables "Globally"**

(A) Check to see whether the SPSM's existing facilities are sufficient to implement the desired data adjustment, so that no new logic is required.

Can the desired population aging be implemented via a selection among existing case weight files? If so, then specify the relevant case weight file (".WGT" extension) via the INPWGT (Input Weight) control parameter. Use a ".CPI" file to provide the desired INPWGT value, or enter it on the fly.

Can the adjustment of the data values be accomplished via changes to the values of the SPSM's data adjustment parameters, in conjunction with the SPSM's normal database adjustment algorithm (adj(hh))? If so, then provide the relevant adjustment parameter values to the SPSM via an ".API" file, or on the fly. Specify it to the SPSM either interactively or via a batch file being used to coordinate execution of the model.

(B) If the desired adjustments to the data cannot be handled via the built-in data adjustment procedures, then some new logic will be required. The steps for adding this new data adjustment logic are as follows:

1. Copy all of the relevant files to a new directory established for the analysis. The files \SPSM\GLASS\adju.cpp, SPSMGL.vcproj, SPSMGL.sln are always relevant. The files \SPSM\GLASS\apu.h and \SPSM\GLASS\apdu.cpp will be relevant when new adjustment parameters are required.
2. Alter the project environment to include all the relevant files and change the name of the compiled model. Alter apu.h if new database adjustment parameters are being defined.

3. Alter `apdu.cpp` if new database adjustment parameters are being defined. The changes will consist of adding new `pmaddent` and `stradd` invocations so that the substance of the new parameters is available throughout the SPSM. Debug the model.
4. Alter `adju.cpp`. First change the function's documentary text string, `AGENAME[IDSIZE+1]`. Then implement the new database adjustment logic. This step will often involve declaring useful local variables and stepping through individuals or families in the household.
5. Compile and validate the model before using it for production runs. Parallel tabulations of relevant individuals and amounts before and after the database adjustment alterations are recommended.
6. Carry out production runs using the new, validated logic.

### **MAKING CHANGES THAT AFFECT ONLY THE BASE OR ONLY THE VARIANT**

Building a model in which database adjustment differs between a base system and a variant system is inherently more complicated than building one in which the two systems are treated identically. When it is possible, the user should avoid such complication. The SPSM's capacity for using "results files" (extension ".MRS") provides the major mechanism for avoiding database adjustment that is system-conditioned.

The basic approach is to divide the problem into two parts, one for each system. Then, within each such system, a single database adjustment algorithm applies, using the methods described earlier in this chapter. The user first creates a results file for one of the two systems, choosing the variables necessary for any system specific tabulations and for any comparisons to be made. In creating this first system, the user applies the database adjustment assumptions relevant to that system. Subsequently, the second system is simulated, with the appropriate, alternative, database adjustments applied to it. The results file is read-in, in parallel with the processing of the second system, so that the two systems, with their different database adjustment assumptions, are available simultaneously for all required comparisons. *Introduction and Overview Guide* provides an illustration of the use of results files.

The remainder of this section is relevant when the results file approach is somehow judged inappropriate or inadequate to the task at hand. A few examples will illustrate such circumstances.

1. The user may place a high premium on having a model that is self-contained, and, once it has been validated, relatively easy to use interactively.
2. The intended application of the model may involve sensitivity analysis that would require several MRS files, with an inherent possibility that confusion might arise. It might require, for example, investigation of the impact of altering the adjustment of one specific variable, with a variety of other variables repeatedly changed in parallel between the base and variant systems.

3. The intended application might involve complicated comparisons requiring large .MRS files.

We believe, however, that these kinds of situations, while occurring occasionally, will be the exception rather than the rule. We encourage users to seek to avoid parallel system models in which database adjustments differs across the two systems.

In broadest outline, the method for making system-specific data changes is similar to that used to make changes to the TAX/TRANSFER LOGIC of a system. Any new system-specific database adjustment parameters are added, via the `mpu.h` and `mpdu.cpp` files, as MODEL parameters, and NOT as data adjustment parameters per se. As described below, the user may wish to add new MODEL dependent variables to track the changes being made. Although, if new parameters and dependent variables are not required, the procedure applies equally to SPSM base and variant models, we shall explain the procedure in terms of the more common situation of variant models.

The MODEL-oriented approach just summarized is mandated by the design of the SPSM. Since there is only a single ".APR" file, its parameters inevitably affect the data adjustment for all systems within a model. In contrast, changes made via ".MPI" files, and via the system-specific `Adrv.cpp` and `drv.cpp` functions, apply only to a single designated tax/transfer system. The user can take advantage of this system-specificity to implement system-specific data adjustments.

The key to the system-specific data adjustment changes lies with alterations made to the `Acall.cpp` file. In essence, the user "intercepts" a household's data record just before it is used by the functions in that procedure, makes the desired changes, and later restores the data record to its original state just before execution leaves that procedure. The next section explores these `Acall.cpp`-oriented steps in greater depth.

### **Implementing Changes in `Acall.cpp`**

The focus in this section rests almost exclusively with the details of changes made within `Acall.cpp`. Because of the similarity of system-specific data adjustments to the kinds of tax/transfer system revisions described earlier in this *Programmer's Guide*, certain topics are not repeated here. Specifically, users are expected to add any new parameters, and any necessary new dependent variables using the methods documented in previous sections. For example, a user might wish to add a new model variable to indicate whether the original database value for a variable has been changed by the system-specific adjustments.

We'll take up the required changes in the order in which a reader would encounter them when reading `Acall.cpp`'s source code. Later, a worked example provides a concrete application of the changes.

#### **(A) Declare New Local (to `Acall.cpp`) Variables**

Recall that the general procedure requires the user to save the values of the variables to be adjusted. The storage permits the values to be restored again before leaving `Acall.cpp`.

Thus, the user must include in `Acall.cpp` appropriate local declarations to provide the needed storage. Typically, the variables to be adjusted will be defined at the level of the individual. Thus, the new variables should typically be defined as vectors of length `MAXPERS`. (`MAXPERS` is the maximum number of individuals in a household.) The user may also wish to define other local, working, variables. Normally, the user will declare these variables just before the opening brace for the function, at about line 90 of the unmodified version of `Acall.cpp`.

#### (B) Save the Values to Be Changed

As the very first thing within the executable portion of `Acall.cpp`, the user should store away the original values of the variables that will be changed. If this is done, none of the other functions invoked inside `Acall.cpp` can alter the value first or use the unaltered value. Typically, the storage is accomplished via a "for" statement that steps across the individuals in a household and copies them, one at a time, into the elements of a vector declared in step (A). One of the elements in the bestiary provides the relevant stepping control. The user will do this at about line 90 of the unmodified code, just after the statement -

```
DEBUG_ON("Acall");
```

#### (C) Change the Database Values

Immediately after the values have been stored, and still before the household's pointer has been passed to any of the tax/transfer or roll-up functions, the user should make the desired changes to the values of the relevant variables. These changes will constitute the bulk of the "real programming", i.e. logic that cannot necessarily be conveniently adapted from elsewhere in the SPSM.

#### (D) Use the Now Adjusted Values

This step is the easiest of all, since it requires no special effort on the part of the user. It consists of **RETAINING** the calls to the several tax/transfer and memo functions. Since the values of the relevant variables have already been adjusted at this point, all of those functions will perform their calculations using the adjusted household.

#### (E) Replace the Original Values

The final step consists of restoring the original values to the variables that were adjusted. It will typically be done at about line 99 of the unmodified version of `Acall.cpp`, just before control passes out of the function, i.e. just before the statement --

```
DEBUG_OFF("Acall");
```

Execution of the replacement is important from the perspective of the code's generality, maintainability, and reusability. The user programs the changes without knowing whether the system programmed will be a base or variant system. By putting things back the way they were, the user can minimize the possibility of unwanted side effects elsewhere in the model. Equally important, this procedure minimizes the potential for unwanted side effects should the new adjustments be used again in another model.

## A Worked Example

### (A) The Substance to be Modelled

We begin with a description of the substantive logic used in the example. It will be obvious that the same data-adjustment goals could have been achieved using the "avoidance" techniques described above; however, since our documentary objective here is the illustration of system-specific data adjustment techniques, we arbitrarily deem those avoidance techniques to be "inappropriate" for our immediate purposes.

Suppose that some exogenous analysis relating to new income tax reporting requirements suggests that individuals will be reporting more self-employment income. More specifically, suppose that 5% of those individuals (1) not reporting more than \$100.00 of self-employment income (farm and non-farm combined) and (2) who are aged both over 25 and under 60 and (3) who further have half a year or more without work and looking for work, really have self-employment income that has not previously been reported, but now will be reported. Moreover, suppose the amounts of "new" self-employment income for these persons is believed to be distributed uniformly between zero and \$4000 per year.

The user seeks to estimate the additional income taxes collectible from these persons and also to assess the impact of this "discovered" income on reducing the poverty rate as measured against the LICOs. To carry out this investigation the user plans, in the variant tax/transfer system, to impute appropriate amounts of these new incomes to randomly selected persons who satisfy the three conditions.

### (B) Relevant New Parameters and Variables

Following recommended SPSM practices for avoiding hard-wired values in a model, the user establishes the following new user-defined adjustment parameters:

Parameter	Description:	Value:
NSEFLAG	"New Self-Employment Income Flag"	1
NSEAMT	"New Self-Employment Trivial Amount"	100.0
NSEFRC	"New Self-Employment Fraction"	0.05
NSEWKS	"New Self-Employment Weeks Requirement"	26
NSEMINAGE	"New Self-Employment Minimum Age"	25
NSEMAXAGE	"New Self-Employment Maximum Age"	60
NSEMAXINC	"New Self-Employment Maximum New Income"	4000.0

Similarly, the user defines new variables that will permit convenient counts of the numbers of eligible persons and of the number for whom new incomes are synthesized. It will also be useful to have an additional new variable for the amounts of synthesized income.

Variable: Description:

uvnseef	"Eligible New Self-Empl"
uvnsesf	"Received New Self-Empl"
uvnseamt	"New Self-Empl Amount"

### (C) Setting Up for the Analysis

The user begins by creating a new subdirectory for the analysis, GLASSEX5. S/he copies in the required template files: SPSMGL.vcproj, SPSMGL.sln (to control the compilation), mpu.h and Ampd.cpp (to make the new parameters available), vsu.h and vsdu.cpp (to make the new variables available), and Acall.cpp (to implement the new system-specific database adjustments).

We look at the changes in the order in which the user would be encouraged to make them.

#### (D) Changes to project

All the relevant files should be included in the project and the name of the output model changed to GLASSEX5.EXE.

#### (E) Changes to mpu.h

The user provides declarations for all of the new parameters described above.

```
int     NSEFLAG;      /* New Self-Employment Income Flag */
NUMBER NSEAMT;      /* New Self-Employment 'Trivial Amount' */
NUMBER NSEFRC;      /* New Self-Employment Fraction */
NUMBER NSEWKS;      /* New Self-Employment Weeks Requirement */
NUMBER NSEMINAGE;   /* New Self-Employment Minimum Age */
NUMBER NSEMAXAGE;   /* New Self-Employment Maximum Age */
NUMBER NSEMAXINC;   /* New Self-Employment Maximum New Income */
```

#### (F) Changes to Ampd.cpp

The user alters the Ampd.cpp file by providing pmaddent and stradd invocations for all of the new parameters. Appropriate new pmaddent calls would be as follows:

```
pmaddent(pcp, "NSEFLAG", (char *)&MP.UM.NSEFLAG, NULL, P_SCL, C_INT, E_FLAG, 0, NULL, 0);
pmaddent(pcp, "NSEAMT", (char *)&MP.UM.NSEAMT, NULL, P_SCL, C_NUM, 0, 0, NULL, 0);
pmaddent(pcp, "NSEFRC", (char *)&MP.UM.NSEFRC, NULL, P_SCL, C_NUM, E_FRCT, 0, NULL, 0);
pmaddent(pcp, "NSEWKS", (char *)&MP.UM.NSEWKS, NULL, P_SCL, C_NUM, 0, 0, NULL, 0);
pmaddent(pcp, "NSEMINAGE", (char *)&MP.UM.NSEMINAGE, NULL, P_SCL, C_NUM, 0, 0, NULL, 0);
pmaddent(pcp, "NSEMAXAGE", (char *)&MP.UM.NSEMAXAGE, NULL, P_SCL, C_NUM, 0, 0, NULL, 0);
pmaddent(pcp, "NSEMAXINC", (char *)&MP.UM.NSEMAXINC, NULL, P_SCL, C_NUM, 0, 0, NULL, 0);
```

The associated stradd invocations would appear as follows:

```
stradd("NSEFLAG", "New Self-Employment Income Flag");
stradd("NSEAMT", "New Self-Employment 'Trivial Amount'");
stradd("NSEFRC", "New Self-Employment Fraction");
stradd("NSEWKS", "New Self-Employment Weeks Requirement");
stradd("NSEMINAGE", "New Self-Employment Minimum Age");
stradd("NSEMAXAGE", "New Self-Employment Maximum Age");
stradd("NSEMAXINC", "New Self-Employment Maximum New Income");
```

#### (G) Changes to vsu.h

In this file the user declares the new variables that will contribute to more convenient validation and tabulation of the individuals for whom new income is considered or actually synthesized.

```
int     uvnseef;     /* Eligible for New Self-Empl Synthesis */
int     uvnseef;     /* Received New Self-Empl Income */
NUMBER uvnseamt;    /* New Self-Empl Amount */
```

## (H) Changes to vsdu.cpp

In vsdu.cpp the user invokes vardef and stradd to make the new variables available throughout the new model. As indicated above, there are two classificatory variables to be used for crosstabulation outputs, and a NUMBER float value for the amount of synthesized self-employment income.

```
/* uvnseef: (Class) Flag: Individual eligible for NSE synthesis? */
vardef("_uvnseef", IN, im.uv.uvnseef, C_INT, V_CLAS);
stradd("uvnseef", "Eligibility for Synth Self-Empl");
stradd("nseef", "\tNot Eligible\tEligible");

/* uvnsesf: (Class) Flag: Individual Got Synth. NSE? */
vardef("_uvnsesf", IN, im.uv.uvnsesf, C_INT, V_CLAS);
stradd("uvnsesf", "Synth Self-Empl Receipt");
stradd("nsesf", "\tNo Receipt\tReceipt");

/* uvnseamt: (Analysis) NUMBER: Amount of synthesized NSE */
vardef("_uvnseamt", IN, im.uv.uvnseamt, C_NUM, V_ANAL);
stradd("uvnseamt", "Synth Self-Empl Amount");
```

## (I) Changes to Acall.cpp

i) The changes begin with the declaration of new variables critical to the data adjustment process. We use standard SPSM notation for the pointer to an individual, and for the number of persons processed (for the stopping rule within households). In addition, there is a vector declared to hold the original values of the individuals' self-employment income.

```
register P_in in;          /* pointer to data for current person */
int ini;                  /* persons processed */
NUMBER orignfse[20];     /* original self-empl income */
```

ii) The changes continue with the code to store the existing self-employment income so that it can later be restored to its original state. We use one of the standard elements of the bestiary, stepping across individuals in the household, to implement this archival.

```
/* Archive original database values for self-employment */
for (ini=0, in=&hh->in[0]; ini<hh->hhnin; in++, ini++) {
    orignfse[ini]=in->id.idise;
}
```

A slightly more efficient version of this code would make the execution of the storage instructions conditional upon the NSEFLAG parameter being set to a value of 1 to activate the synthesis facility. The version here is simpler and slightly safer.

### iii) Implement the conditionally augmented self-employment income

Users are encouraged to use the built-in random number generators in SPSM (idrand) to ensure replicability of results. The use of C++ random numbers may generate different results with each run.

```
/* Selectively synthesize self-employment income */
for (ini=0, in=&hh->in[0]; ini<hh->hhnin; in++, ini++) {
    in->im.uv.uvnseef=0; /* assign values to new vars */
    in->im.uv.uvnsesf=0;
    in->im.uv.uvnseamt=(NUMBER)0.0;
```



```

    if (MP.UM.NSEFLAG==0) {
        continue; /* don't synthesize if facility is off */
    }

    if ( (in->id.idise>MP.UM.NSEAMT) ||
        (in->id.idnage<MP.UM.NSEMINAGE) ||
        (in->id.idnage>MP.UM.NSEMAXAGE) ||
        (in->id.idlyun<(int)MP.UM.NSEWKS) ) {
        continue; /* ignore ineligible individuals */
    }

    in->im.uv.uvnseef=1; /* mark indiv. as potentially eligible */

    if (in->id.idrand[2]>MP.UM.NSEFRC) {
        continue; /* individual was not selected to get income */
    }

    in->im.uv.uvnseef=1; /* mark indiv. as recipient */
    in->im.uv.uvnseamt=in->id.idrand[3]*MP.UM.NSEMAXINC; /*synthesize amt */
    in->id.idise+=in->im.uv.uvnseamt; /* add syn amt to self-empl*/
}

```

The preceding code, though a bit lengthy, is straightforward. Inside the loop through individuals, one performs the following actions:

- Assign default values to the new user-defined variables.

- Skip the rest of the loop if the facility was not activated.

- Skip the rest of the loop if the individual doesn't meet the qualifying conditions for synthesis of new self-employment income.

- Mark the individual as potentially eligible for synthesis; then skip the rest of the loop if the individual is not "chosen" to receive income.

- If execution reaches this stage, mark the individual as a recipient of synthesized income and impute the amount, adding the new amount to the person's self-employment variable.

Once the loop has been executed, the synthesis of new self-employment income is complete for all members of the household. At this point the "regular" statements of `Adrv.cpp` follow, calculating the tax/transfer amounts and the several memo items.

iv) Finally, after the adjusted household has been processed through all of the tax/transfer and memo functions, the new code restores the original self-employment income values.

```

    /* Restore original database values for self-employment */

    for (ini=0, in=&hh->in[0]; ini<hh->hhnin; in++, ini++) {

in->id.idise=orignfse[ini]; }

```

A slightly more efficient version of this code would make the execution of the restoration instructions conditional upon the `NSEFLAG` parameter being set to the value of 1 that activates the synthesis facility. The version here is simpler and slightly safer.

## (J) The new MPI and CPI files

It still remains to provide values to the several parameters so that the SPSM, during a particular run, can implement the desired adjustments. A parameter "include file" (extension ".MPI") with the following entries performs this function. Alternatively, users can edit parameters on the fly from the hierarchy if using Visual SPSM.

NSEFLAG	1
NSEAMT	100.0
NSEFRC	0.05
NSEWKS	26.0
NSEMINAGE	25.0
NSEMAXAGE	60.0
NSEMAXINC	4000.0

Similarly, it is necessary to make sure that the relevant independent streams of pseudo-random variates are generated to serve as inputs to the "random" choices of synthetic income recipients and the associated amounts of synthesized income.

## (K) Compiling and Validating the Model

With all of the source code changes complete, the user should first debug the model and then compile the desired executable file, GLASSEX5. We conclude this worked example by characterizing a very quick and dirty set of validation tables. For a serious application, the user would normally undertake a much more rigorous validation of the changes. Recall too, that this kind of system-specific data adjustment could more easily have been accomplished using results files (".MRS"). Under that mechanism, an equivalent income assignment logic would have been applied via the `adju.cpp` file, and the relevant parameters would have been supplied via an `API` file or entered on the fly.

Assume, for purposes of this quick and dirty illustrative validation, that the user's exogenous source has already indicated roughly how many individuals should display new self-employment income, perhaps as a function of some relevant policy variable.

The user will first want to tabulate the numbers of individuals according to the values of the two user-defined classificatory variables, `uvnseef`, and `uvnsesf`. Then the entries in this table can be compared to the exogenous source to confirm (1) that the numbers of eligible individuals agrees with those specified in the "exogenous source," (2) that an appropriate proportion of these individuals have had new self-employment income imputed.

Next, the user would want to confirm that the average amount of new imputed self-employment income is appropriate (i.e. half of the \$4,000 `NSEMAXINC` parameter value). It would also make sense to tabulate the total amount of new income imputed, so that this amount can be compared to the increases in federal and provincial income taxes. Thus the user can confirm whether an appropriate proportion of the new income is flowing to the government sector as income taxes.

Even for the validation runs, it makes sense to look at the degree of change in the

incidence of units below the relevant LICOs. Given the relatively tight conditions for the eligibility to receive the synthesized income, and the relatively small portion of the eligible population selected to receive new self-employment income, the user should expect only a small change in that incidence.

Here we show the first part of this validation, verifying the amounts of new self-employment income. The changes in "poverty rate," not shown here, would be derived using the SPSM's "efpovthr" (poverty threshold) and "impovinc" (income for comparison against the relevant poverty threshold) variables. The validation is most conveniently performed via crosstabulations. The relevant control parameters, input via a ".CPI" file, are as follows:

```
XTFLAG      1
XTSPEC
IN: { units }
  * uvkseef
  * uvksesf;
IN: { uvkseamt,
      uvkseamt/units }
  * uvksesf;
IN: { uvkseamt,
      imtxf-_imtxf,
      imtxp-_imtxp }
  * uvksesf;
```

Note that the glass box results were produced using a previous version of the SPSM model.

The resulting tables then appear as –

Table 1U: Unit Count (000) for Individuals by Eligibility for Synth Self-Empl and Synth Self-Empl Receipt

Synth Self-Empl Receipt		
Eligibility for Synth Self-Empl	No Receipt	Receipt
Not Eligible	23351.7	0.0
Eligible	809.6	47.2

Table 2U: Selected Quantities for Individuals by Synth Self-Empl Receipt

Synth Self-Empl Receipt		
Quantity	No Receipt	Receipt
Synth Self-Empl Amount (M)	0.0	92.5
uvkseamt/units	0	1962

Table 3U: Selected Quantities for Individuals by Synth Self-Empl Receipt

Synth Self-Empl Receipt		
Quantity	No Receipt	Receipt

Synth Self-Empl Amount (M)	0.0	92.5
imtxf-_imtxf (M)	1.0	12.9
imtxp-_imtxp (M)	0.5	9.5

As regards the substance of these tables, we'll assume that the 809.6 thousand persons in table 1U agrees reasonably well with the hypothesized "exogenous data source." Since 47.2 thousand of these persons received some new self-employment income, the 5% objective has been roughly met.

Table 2U confirms that our new algorithm assigns new self-employment income only to those eligible to receive it. The total amount of new income, and the associated average amount, confirms that the expected amounts of the new income are being synthesized (roughly \$2000 per selected individual).

Table 3U then indicates how much of the new income, a bit more than a quarter of it, is being captured by the tax system. As expected, most of the capture is directly from the recipient individuals. There is some from non-recipients - primarily because they can no longer claim the spousal tax credit as their spouses receive the new income. Clearly, with income of less than \$100M being distributed across the whole personal sector, we do not expect any major impacts on the proportion of the population below the LICOs.

Finally, once the user is satisfied as to the correctness of the adjustment procedures, s/he would run the full SPSD through the model in one or more production runs. To meet the illustrative goals described at the start of this section, outputs would have to include the federal and provincial income tax totals, and the numbers of families above and below the LICOs, with these outputs being produced both with and without the synthesis of new self-employment income. Normally, the user would also include breakouts of these variables by relevant classificatory variables such as family type.

### **Checklist for System-Specific Database Changes**

- (A) Create a new subdirectory for the analysis. Copy into it templates for all of the files that will be needed for the analysis. Items that are likely to be required include `SPSMGL.sln`, `SPSMGL.vcproj`, `mpu.h`, `Ampd.cpp`, `vsu.h`, `vsdu.cpp`, `Acall.cpp`, and a control (".CPR") file. The user will also create, in this same subdirectory, other files required for the analysis for which there are no obvious templates, e.g. the ".MPI" file that will provide values for the system-specific database adjustment parameters, or a batch file to control the SPSM session.
- (B) Change the project environment to include all the relevant files and change the name of the executable output file.
- (C) Change `mpu.h` and `Ampd.cpp` to declare any new system-specific data adjustment parameters, and to make them available, via invocations of `pmaddent` and `stradd`, to the

rest of the SPSM.

- (D) Change `vsu.h` and `vsdu.cpp` as required to declare any new system-specific model variables, and to make them available, via invocations of `vardef` and `stradd`, to the rest of the SPSM.
- (E) Change `Acall.cpp` to save the original values of the variables to be adjusted, to effect the adjustments, and then, after the household has been processed, to restore the original values before leaving the procedure. These steps will typically require the definition of local `VECTORS` of values dimensioned for the numbers of possible individuals in a household.
- (F) Compile the new model and correct any problems identified by the compiler.
- (G) Supply values for the new system-specific data adjustment parameters via an `".MPI"` file or enter on the fly. When the adjustment depends on the use of random variables, provide a `".CPI"` file (or edit the parameter on the fly if using Visual SPSM) with appropriate changes to the `SEED` parameter. The model will gain access to these control and model parameter values at model execution time either interactively or via an SPSM batch file.
- (H) Validate the model carefully, and then make production runs.