



Catalogue no. 92-196-X

Geography Catalogue

Census year 2006

Final edition



Statistics
Canada

Statistique
Canada

Canada

How to obtain more information

For information about this product or the wide range of services and data available from Statistics Canada, visit our website at www.statcan.ca, e-mail us at infostats@statcan.ca, or telephone us, Monday to Friday from 8:30 a.m. to 4:30 p.m., at the following numbers:

Statistics Canada's National Contact Centre

Toll-free telephone (Canada and United States):

Inquiries line	1-800-263-1136
National telecommunications device for the hearing impaired	1-800-363-7629
Fax line	1-877-287-4369

Local or international calls:

Inquiries line	1-613-951-8116
Fax line	1-613-951-0581

Depository Services Program

Inquiries line	1-800-635-7943
Fax line	1-800-565-7757

To access this product

This product, Catalogue no. 92-196-X, is available free in electronic format. To obtain a single issue, visit our website at www.statcan.ca and select "Publications" > "Free Internet publications."

Standards of service to the public

Statistics Canada is committed to serving its clients in a prompt, reliable and courteous manner. To this end, Statistics Canada has developed standards of service that its employees observe. To obtain a copy of these service standards, please contact Statistics Canada toll-free at 1-800-263-1136. The service standards are also published on www.statcan.ca under "About us" > "Providing services to Canadians."



Statistics Canada

Geography Catalogue

Census year 2006

Published by authority of the Minister responsible for Statistics Canada

© Minister of Industry, 2008

All rights reserved. The content of this electronic publication may be reproduced, in whole or in part, and by any means, without further permission from Statistics Canada, subject to the following conditions: that it be done solely for the purposes of private study, research, criticism, review or newspaper summary, and/or for non-commercial purposes; and that Statistics Canada be fully acknowledged as follows: Source (or "Adapted from", if appropriate): Statistics Canada, year of publication, name of product, catalogue number, volume and issue numbers, reference period and page(s). Otherwise, no part of this publication may be reproduced, stored in a retrieval system or transmitted in any form, by any means—electronic, mechanical or photocopy—or for any purposes without prior written permission of Licensing Services, Client Services Division, Statistics Canada, Ottawa, Ontario, Canada K1A 0T6.

April 2008

Catalogue no. 92-196-XIE

ISBN 978-0-662-44995-9

Frequency: occasional

Ottawa

Cette publication est disponible en français sur demande (n° 92-196-XIF au catalogue).

Note of appreciation

Canada owes the success of its statistical system to a long-standing partnership between Statistics Canada, the citizens of Canada, its businesses, governments and other institutions. Accurate and timely statistical information could not be produced without their continued cooperation and goodwill.

Table of contents

	Page
General information	7
1. Geographic reference products	9
Illustrated Glossary.....	9
GeoSearch2006	10
Geography Catalogue	12
Geography definitions (2006 Census Dictionary)	12
Reference guides	13
Reference maps – 2006 Census.....	14
Reference maps – complete set, 2006 Census	14
National reference maps	14
Federal Electoral Districts (2003 Representation Order) Reference Map	15
Census Division and Census Subdivision Reference Maps	15
Census Tract Reference Maps, by Census Metropolitan Areas or Census Agglomerations	18
Dissemination Area Reference Maps, by Census Tracts, for Census Metropolitan Areas and Census Agglomerations	22
Dissemination Area Reference Maps, by Non-tracted Census Agglomerations	26
Dissemination Area Reference Maps, by Census Subdivisions, for areas outside Census Metropolitan Areas and Census Agglomerations.....	29
Thematic maps – 2006 Census	31
Geography Working Paper Series	32
Interim List of Changes to Municipal Boundaries, Status and Names.....	32
Standard Geographical Classification (SGC).....	33
Standard Geographical Classification (SGC). Volume I. The Classification	33
Standard Geographical Classification (SGC). Volume II. Reference Maps	33
2. Geographic data products	34
Population and dwelling counts, 2006 Census	34
GeoSuite	35
Geographic Attribute File	36
Correspondence Files	36
GeoSearch2006	37
3. Spatial information products	39
Boundary Files, 2006 Census	40
Province and Territory Boundary Files	42
Census Division Boundary Files.....	42
Census Consolidated Subdivision Boundary Files.....	42
Census Subdivision Boundary Files.....	43
Economic Region Boundary Files	43
Census Metropolitan Area and Census Agglomeration Boundary Files	44
Federal Electoral District Boundary Files (2003 Representation Order).....	44
Census Tract Boundary Files	45
Designated Place Boundary Files	45
Urban Area Boundary Files	46
Dissemination Area Boundary Files	46
Dissemination Block Boundary Files.....	47
Census Forward Sortation Area Boundary File.....	48
Population Ecumene Census Division Cartographic Boundary File	49
Road Network File.....	50
Road Network and Geographic Attribute File	50

4. Attribute information products	54
Postal Code Conversion File (PCCF)	54
Postal Code Conversion File (PCCF) – Update.....	55
Postal Codes by Federal Ridings (2003 Representation Order) File (PCFRF)	58
Postal Codes by Federal Ridings (2003 Representation Order) File (PCFRF) – Update	58
5. Geographic services	60
Custom Area Creation Service.....	60
Geography Custom Service	60
Geography Custom Mapping	61
Print-on-demand, reference maps	61
6. Other Statistics Canada related geographic products and services.....	62
Agriculture products and services	62
Agricultural Ecumene of Canada, 2006	62
Cartographic Boundary File for census agricultural regions (CARs)	62
Remote Sensing and Geospatial Analysis (RSGA) Section	63
Appendix A Glossary	64
Appendix B Hierarchy of standard geographic units for dissemination, 2006 Census	71
Appendix C Geographic units by province and territory, 2006 Census.....	72
Example of end-use licence agreement for Statistics Canada's for fee products	73
Example of unrestricted use licence agreement for free Statistics Canada products	75
Geography products feedback	80

ELECTRONIC PUBLICATIONS AVAILABLE AT
www.statcan.ca



General information

Statistics Canada maintains a spatially referenced geographic database in support of the Censuses of Population and Agriculture, the Standard Geographical Classification (SGC) and other Statistics Canada programs. Statistics Canada also develops geographical concepts, delineates geographic areas, publishes maps and other reference materials, produces files on CD-ROM (DVD), posts online products through the Statistics Canada website (www.statcan.ca) and offers a variety of services.

Overview

The 2006 Census geography product line (www12.statcan.ca/english/census06/geo/index.cfm) includes new and modified geography concepts, enhancements and improvements to existing products, the introduction of new products, and a greater presence on the website. For 2006, Digital Boundary Files are once again available. Reference maps and other geographic products are available in a variety of media. Tools are provided for users to find and view their geographic area of interest on the Statistics Canada website.

This edition of the Geography Catalogue includes all of the information found in the Statistics Canada online catalogue, but has the following additional information. It provides highlights of what's new about geographic products for the 2006 Census, as well as illustrations of several products. It includes a glossary of geographic terms, the geographic hierarchy diagram and tables showing the number of geographic units by province and territory for the 2006 Census. Also included are examples of the Statistics Canada's licence agreements for free products and for fee products.

The catalogue is organised according to the following categories of products and services:

1. Geographic reference products

A full range of geographic reference products and tools are available free on the Statistics Canada website.

2. Geographic data products

Population and dwelling counts from the 2006 Census are available free on the Statistics Canada website for all levels of geography using GeoSearch2006. Individual tables or groups of tables showing population and dwelling counts may be purchased. For more information, contact the National inquiries line at 1-800-263-1136.

GeoSuite and the Geographic Attribute File are geographic reference tools that also provide 2006 Census Population and Dwelling counts. GeoSuite is available for purchase as a download and/or on CD-ROM. The Geographic Attribute File is available for purchase as an ASCII file.

3. Spatial information products

Spatial information products provide the shape and location of geographic features for use with computer mapping and geographic information system applications.

The road network, boundaries and other features of standard geographic areas are available.

The Road Network File and selected boundary files are available free of charge, while other boundary files are available for a fee.

4. Attribute information products

Attribute information products include the Postal Code Conversion File (PCCF) and the Postal Codes by Federal Ridings File (PCFRF). These products were released with attributes for the 2006 Census on October 19, 2007.

5. Geographic services

Custom services, including the preparation of custom boundaries for custom data retrievals (geocoding), custom mapping and other custom packaging of standard products, are available. Contact us through the National inquiries line at 1-800-263-1136 or through the Custom services web page (www12.statcan.ca/english/census06/Services/custom.cfm) on the Statistics Canada website (www.statcan.ca).

6. Other Statistics Canada related geographic products and services

Products and services available from the Agriculture Division are briefly described.

Prices and shipping charges

Prices quoted in this catalogue exclude sales tax. There are no shipping charges for delivery in Canada. For shipments to the United States, shipping charges are CAN\$6 per issue or item ordered. For shipments to other countries, shipping charges are CAN\$10 per issue or item ordered. Contact us by calling the National inquiries line at 1-800-263-1136. You can also contact us by e-mailing infostats@statcan.ca or through the Contact us web page (www.statcan.ca/english/reference/refcentre/index.htm) on the Statistics Canada website (www.statcan.ca).

1. Geographic reference products

Geographic reference products help users gain a better understanding of geographic concepts and locate the geographic areas appropriate to their census and other data needs.

What's new?

- Redesigned 2006 Census website (www.statcan.ca) provides improved access to all the geography products and services (www12.statcan.ca/english/census06/geo/index.cfm).
- The complete set of all reference maps for 2006 is available for purchase for \$275 (as PDF files on DVD).
- The *Interim List of Changes to Municipal Boundaries, Status and Names* (www.statcan.ca/bsolc/english/bsolc?catno=92F0009X) is now available on the Statistics Canada website (www.statcan.ca).

Illustrated Glossary

The Illustrated Glossary is a tool that can help users take full advantage of census data by providing an understanding of the terms related to geographic concepts, infrastructure, products and services. Geography is important to the national statistical system. Well-defined geographic areas provide the framework for the collection, presentation and analysis of data. Visitors to the Geography site can access the Illustrated Glossary which presents geographic concepts, products and services, as well as links to online tutorials and detailed definitions. To view the glossary, visit www.statcan.ca/bsolc/english/bsolc?catno=92-195-X on the Statistics Canada website (www.statcan.ca).

Catalogue no.	Medium	Language	Price	Release date
92-195-XWE	Internet	English	Free	13 March 2007
92-195-XWF	Internet	French	Free	13 March 2007

GeoSearch2006

Redesigned for 2006, this interactive mapping application makes it easy to find many places in Canada, see them on a map, and get basic geographic and demographic data for those places. To find a specific place of interest, users can click and zoom in on a map of Canada or they can search by place name, street name, street intersection or postal code. GeoSearch2006 displays the appropriate map showing boundaries and other features. GeoSearch2006 automatically displays population and dwelling counts for the selected places, and shows what kind of census geographic area it is and its relationship to other census geographic areas.

New functionality for 2006 includes links to 2006 Census reference maps and community profile tables, and a thematic mapping option for selected census topics (for selected levels of geography).

Thematic variables available in GeoSearch2006 include:

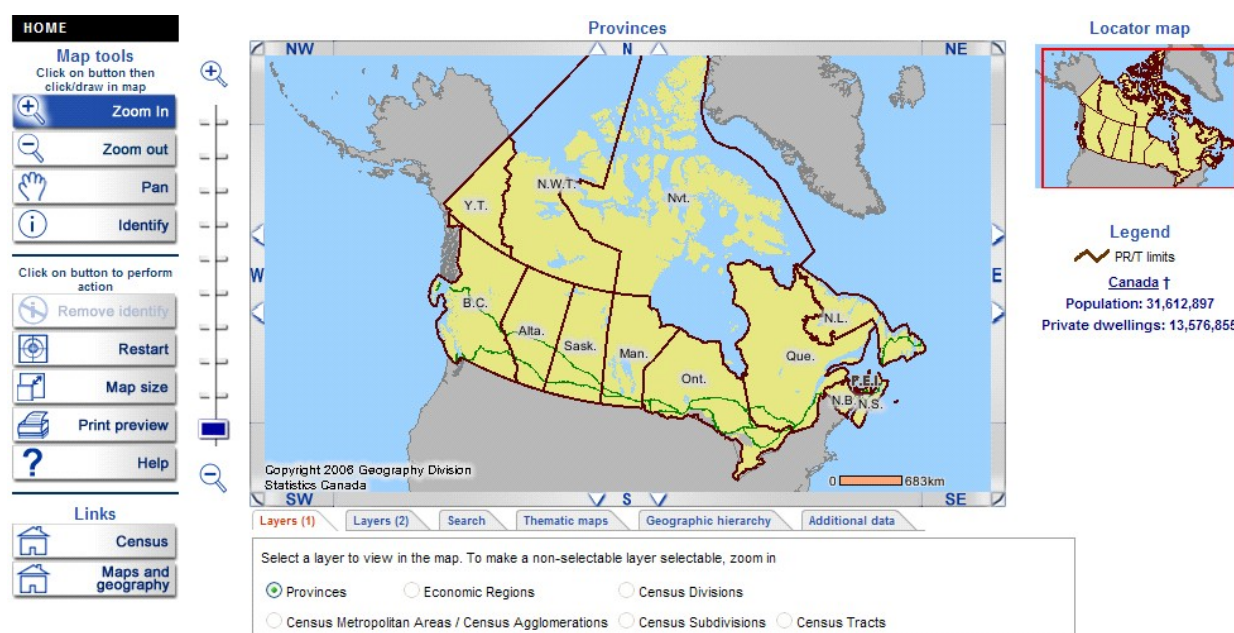
- **Population and Dwelling Counts** – March 13, 2007
 - Population density persons per square kilometre, 2006
 - Population change, 2001 - 2006 (Percentage change)
- **Age and Sex** – July 17, 2007
 - Median age
 - Percentage of population aged 14 years and under
 - Percentage of population aged 65 years and over
- **Families and Households** – September 12, 2007
 - Percentage of census families who are lone parent
 - Percentage of private households containing couples with children under age 25 at home
- **Language, Immigration and Citizenship** – December 4, 2007
 - Percentage of anglophones (Population with English as mother tongue)
 - Percentage of francophones (Population with French as mother tongue)
 - Percentage of allophones (Population with a mother tongue other than English or French)
 - Percentage of population speaking English most often at home
 - Percentage of population speaking French most often at home
 - Immigrants as a percentage of total population
- **Aboriginal peoples** – January 15, 2008
 - Percentage of population with an Aboriginal Identity
 - Percentage of population with a North American Indian Identity
 - Percentage of population with a Métis Identity
 - Percentage of population with an Inuit Identity
- **Labour and Education** – March 4, 2008
 - Unemployment Rate, for the Population 15 years and Older
 - Employment Rate, for the Population 15 years and Older
 - Average Annual Employment Growth 2001 to 2006, for the Population 15 years and Older
 - Educational Attainment - Percentage University Certificate, Diploma or Degree
 - Educational Attainment - Percentage College, CEGEP or Other Non-university Certificate or Diploma
 - Educational Attainment - Percentage Apprenticeship or Trades Certificate or Diploma
 - Educational Attainment - Percentage High School Certificate or Equivalent
 - Educational Attainment - Percentage Less than High School

- **Ethnic Origin, Visible Minorities and Place of Work** – April 2, 2008
 - Median Commuting Distance by Place of Residence
 - Percentage employed labour force using a sustainable mode of transportation to get to work (place of work)
 - Percentage of visible minorities
- **Income and Earnings** – May 1, 2008
- **Shelter Costs** – June 4, 2008

To view GeoSearch2006, visit [on the Statistics Canada website \(\[www.statcan.ca\]\(http://www.statcan.ca\)\).](http://www.statcan.ca/bsolc/english/bsolc?catno=92-197-X)

Catalogue no.	Medium	Language	Price	Release date
92-197-XWE	Internet	English	Free	13 March 2007
92-197-XWF	Internet	French	Free	13 March 2007

Figure 1.1 View of GeoSearch2006 on the Statistics Canada website



Geography Catalogue

The *Geography Catalogue* includes all information found in the Statistics Canada online catalogue, but has the following additional information. It provides highlights of what's new about geographic products, as well as illustrations of several products. It includes a glossary of geographic terms, the geographic hierarchy diagram, and a table showing the number of geographic units by province and territory for the 2006 Census. Also included are examples of the Statistics Canada's licence agreements for free products and for fee products.

To view the *Geography Catalogue*, visit www.statcan.ca/bsolc/english/bsolc?catno=92-196-X on the Statistics Canada website (www.statcan.ca).

Catalogue no.	Medium	Language	Price	Release date
92-196-XWE	Internet	English	Free	10 April 2008
92-196-XWF	Internet	French	Free	10 April 2008
92-196-XIE	PDF	English	Free	10 April 2008
92-196-XIF	PDF	French	Free	10 April 2008

Geography definitions (2006 Census Dictionary)

The Geography section of the *2006 Census Dictionary* provides an overview of what's new for 2006 and the definitions for geographic concepts, products and other terms. The definitions include a detailed description of each term, delineation rules, special notes, data quality information or applications relevant to the term. Some historical information is also provided. The dictionary also includes a comprehensive subject index. The geography portion of the online dictionary was available February 14, 2007.

The Internet version of the complete *2006 Census Dictionary* is available at www.statcan.ca/bsolc/english/bsolc?catno=92-566-X on the Statistics Canada website (www.statcan.ca). A print publication of the complete 2006 Census Dictionary is scheduled for release on October 7, 2008.

Catalogue no.	Medium	Language	Price	Release date
92-566-XWE	Internet	English	Free	14 February 2007
92-566-XWF	Internet	French	Free	14 February 2007
92-566-XPE	Print	English	\$25	7 October 2008
92-566-XPf	Print	French	\$25	7 October 2008

Reference guides

Most geography products come with free reference guides that describe the content, applications, data quality and record layouts. The following reference guides are available as PDF and/or HTML documents.

Table 1.1 Reference guides for geography products available in PDF and/or HTML

Catalogue no.	Title	Medium	Price	Release date
92-145-GWE	Dissemination Area Reference Maps, Reference Guide	Internet	Free	16 January 2007
92-145-GIE	Dissemination Area Reference Maps, Reference Guide	PDF	Free	16 January 2007
92-146-GWE	Census Tract Reference Maps by Census Metropolitan Area or Census Agglomeration, Reference Guide	Internet	Free	16 January 2007
92-146-GIE	Census Tract Reference Maps by Census Metropolitan Area or Census Agglomeration, Reference Guide	PDF	Free	16 January 2007
92-149-GWE	National, Census Divisions and Census Subdivisions Reference Maps, Reference Guide	Internet	Free	18 October 2006
92-149-GIE	National, Census Divisions and Census Subdivisions Reference Maps, Reference Guide	PDF	Free	18 October 2006
92-150-GIE	GeoSuite, Reference Guide	PDF	Free	13 March 2007
92-151-GIE	Geographic Attribute File, Reference Guide	PDF	Free	13 March 2007
92-153-GWE	Postal Code Conversion File (PCCF), Reference Guide	Internet	Free	30 January 2008
92-153-GIE	Postal Code Conversion File (PCCF), Reference Guide	PDF	Free	30 January 2008
92-155-GWE	Road Network and Geographic Attribute File, Reference Guide	Internet	Free	13 March 2007
92-155-GIE	Road Network and Geographic Attribute File, Reference Guide	PDF	Free	13 March 2007
92-156-GWE	Correspondence Files, Reference Guide	Internet	Free	14 February 2007
92-156-GIE	Correspondence Files, Reference Guide	PDF	Free	14 February 2007
92-159-GWE	Population Ecumene Census Division Cartographic Boundary File, Reference Guide	Internet	Free	13 March 2007
92-159-GIE	Population Ecumene Census Division Cartographic Boundary File, Reference Guide	PDF	Free	13 March 2007
92-160-GWE	Boundary Files, Reference Guide	Internet	Free	13 March 2007
92-160-GIE	Boundary Files, Reference Guide	PDF	Free	13 March 2007
92-170-GWE	Census Forward Sortation Area Boundary File, Reference Guide	Internet	Free	17 July 2007
92-170-GIE	Census Forward Sortation Area Boundary File, Reference Guide	PDF	Free	17 July 2007
92F0193GWE	Postal Codes by Federal Ridings File (PCFRF), Reference Guide	Internet	Free	30 January 2008
92F0193GIE	Postal Codes by Federal Ridings File (PCFRF), Reference Guide	PDF	Free	30 January 2008
92-500-GWE	Road Network File Reference Guide	Internet	Free	22 November 2007
92-500-GIE	Road Network File Reference Guide	PDF	Free	22 November 2007

Reference maps – 2006 Census

Reference maps show the location of the geographic areas for which census data are tabulated and disseminated. The maps display the boundaries, names and codes of standard geographic areas, as well as major cultural and physical features, such as roads, railroads, coastlines, rivers and lakes.

What's new?

- The Dissemination Area Reference Maps, by Census Division, for areas outside Census Metropolitan Areas and Census Agglomerations, 2001 Census are discontinued and replaced by the Dissemination Area Reference Maps, by Census Subdivision, for areas outside Census Metropolitan Areas and Census Agglomerations, 2006 Census.
- The complete set of reference maps for 2006 is available for purchase for \$275 (as PDF files on DVD). The minimum charge for custom orders is \$128. Paper copies of the reference maps can also be purchased. The minimum charge is \$128. Contact us through the National inquiries line at 1-800-263-1136 or order on-line through infostats@statcan.ca.

Over 10,000 reference maps are available for the 2006 Census. Given the diversity in size of these geographic areas, different map scales and map coverages are required to show the appropriate level of detail. Descriptions of each series are provided with the individual catalogue entries below.

Individual reference maps can be viewed and downloaded for free (as PDF files) at www.statcan.ca/english/mapsgeo/geographic.htm on the Statistics Canada website (www.statcan.ca).

Reference maps – complete set, 2006 Census

The complete set of reference maps for the 2006 Census are available for purchase as PDF files on DVD at www.statcan.ca/bsolc/english/bsolc?catno=92-172-X on the Statistics Canada website (www.statcan.ca).

Catalogue no.	Medium	Language	Price	Release date
92-172-XVB	DVD	Bilingual	\$275	13 March 2007

National reference maps

For the 2006 Census, four national maps produced by Statistics Canada show the location of census metropolitan areas and census agglomerations, census divisions, economic regions and census divisions and the Statistical Area Classification. The maps are produced as part of the *Standard Geographic Classification (SGC), Volume II, Reference Maps* (Catalogue no. 12-572-XWE), available at www.statcan.ca/bsolc/english/bsolc?catno=12-572-X on the Statistics Canada website (www.statcan.ca).

Census Metropolitan Areas and Census Agglomerations, 2006

This map shows the general location of census metropolitan areas and census agglomerations within each province and territory, with large dots designating census metropolitan areas and small dots designating census agglomerations. The map also lists the census metropolitan area and census agglomeration names in census metropolitan area and census agglomeration code order, by province and territory. The scale of this map is 1:7,500,000 (with an inset showing southern Quebec and southern Ontario at 1:4,000,000) and its approximate dimensions are 107 cm by 87 cm (42 inches by 34 inches). The approximate size of the PDF file is 5.6 MB.

Census Divisions, 2006

This map shows the census division boundaries and codes within each province and territory, on a background of major lakes and rivers. The map also lists the census division names in census division code order, by province and territory. The scale of this map is 1:7,500,000 (with an inset showing southern Quebec and southern Ontario at 1:4,000,000) and its approximate dimensions are 107 cm by 87 cm (42 inches by 34 inches). The approximate size of the PDF file is 6.5 MB.

Economic Regions and Census Divisions, 2006

This map shows the economic region and census division boundaries and codes within each province and territory. The map also lists, by province and territory, the economic region names in economic region code order, within which their component census division codes and names are numerically listed. The scale of this map is 1:7,500,000 (with an inset showing southern Quebec and southern Ontario at 1:4,000,000) and its approximate dimensions are 107 cm by 87 cm (42 inches by 34 inches). The approximate size of the PDF file is 6.6 MB.

Statistical Area Classification, 2006 Census Subdivisions

This map shows census subdivisions classified by colour according to the category of the Statistical Area Classification they are assigned to. The categories include: component of a census metropolitan area/census agglomeration, component of a census metropolitan area and census agglomeration influenced zone (strongly influenced, moderately influenced, weakly influenced or not influenced), or component of the territories (Yukon Territory, Northwest Territories and Nunavut). The scale of this map is 1:7,500,000 (with an inset showing southern Quebec and southern Ontario at 1:4,000,000) and its approximate dimensions are 107 cm by 87 cm (42 inches by 34 inches). The approximate size of the PDF file is 10.8 MB.

Federal Electoral Districts (2003 Representation Order) Reference Map

This national map shows the boundaries, names and codes of federal electoral districts according to the 2003 Representation Order, on a background of major lakes and rivers. Insets show more detail for the congested areas on the map. The federal electoral district map was produced by Natural Resources Canada for Elections Canada. The dimensions of this map are approximately 74 cm by 25 cm (29 inches by 10 inches). The approximate size of the PDF file is 3.3 MB.

Census Division and Census Subdivision Reference Maps

The set of Census Division and Census Subdivision Reference Maps covers all of Canada, by province and territory. The maps show the boundaries, names and codes of census divisions (such as counties and regional districts) and census subdivisions (such as cities, towns, villages, other local municipal entities, townships and Indian reserves). The maps also show the boundaries of census metropolitan areas and census agglomerations. There are 23 maps that vary in scale (ranging from 1:275,000 to 1:4,500,000) and size, the maximum dimensions being approximately 91 cm by 112 cm (36 inches by 44 inches); see Figure 1.2 and Table 1.2. A reference guide is available (Catalogue no. 92-149-GIE, GWE).

Note: The complete set of Census Division and Census Subdivision Reference Maps is available in the *Standard Geographical Classification (SGC), Volume II, Reference Maps* (Catalogue no. 12-572-XWE, XWF, XPB). This publication also includes four maps of Canada at the 1:7,500,000 scale, one showing census divisions, one showing economic regions and census divisions, one showing Statistical Area Classification and one showing point locations of census metropolitan areas and census agglomerations. An index map is also included that shows the areas covered by each provincial or territorial map.

View the *Standard Geographical Classification (SGC), Volume II, Reference Maps* publication online at www.statcan.ca/bsolc/english/bsolc?catno=12-572-X on the Statistics Canada website (www.statcan.ca).

Catalogue no.	Medium	Language	Price	Release date
12-572-XWE	Internet	English	Free	18 October 2006
12-572-XWF	Internet	French	Free	18 October 2006
12-572-XPB	Print	Bilingual	\$135	16 January 2007

Figure 1.2 Index map for Census Division and Census Subdivision Reference Maps

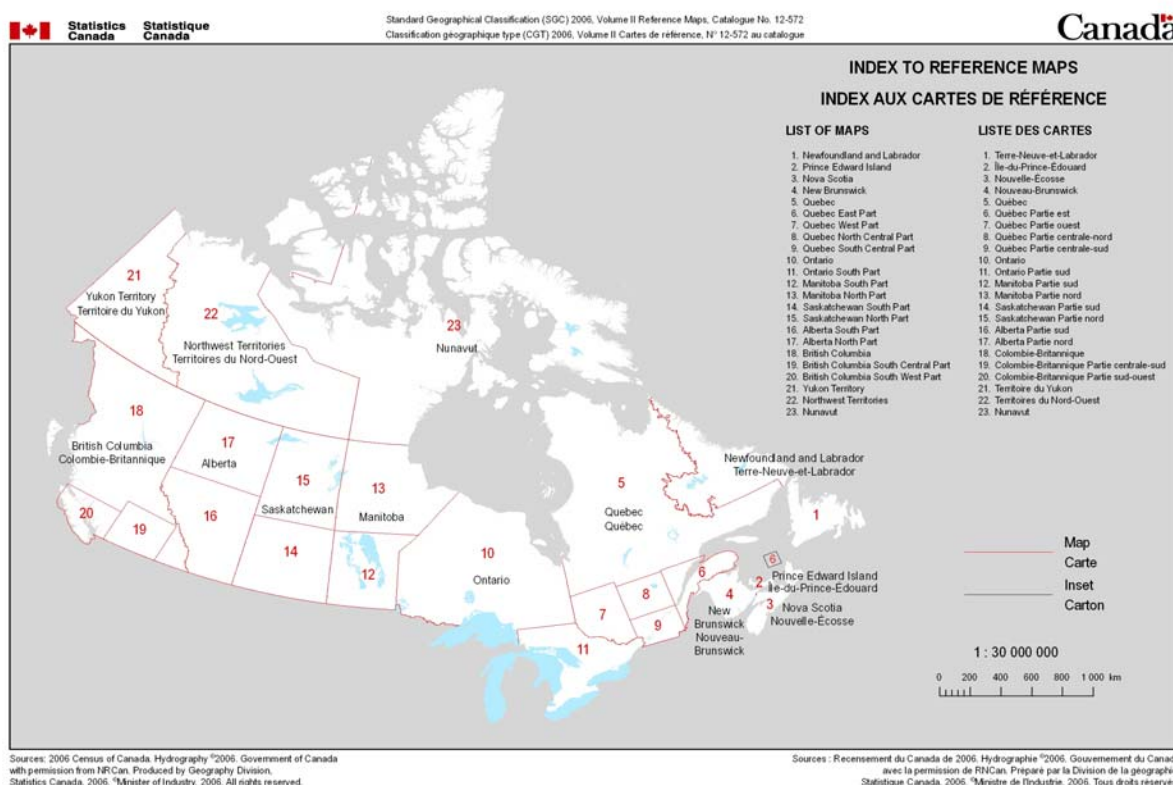


Table 1.2 Summary of National, census division and census subdivision reference maps by province and territory

Map no.	Map title	Map scale	Map dimensions (approximate)				Approximate size of PDF file (MB)
			inches		centimetres		
			width	height	width	height	
	Index to maps	1: 30,000,000	8.50	11.00	22.0	28.0	1.4
A	Canada Census Divisions	1: 7,500,000	42.00	34.00	107.0	87.0	6.5
B	Canada Census Metropolitan Area/Census Agglomeration	1: 7,500 000	42.00	34.00	107.0	87.0	5.6
C	Canada Statistical Area Classification	1: 7,500,000	42.00	34.00	107.0	87.0	10.8
D	Canada Economic Regions	1: 7,500,000	42.00	34.00	107.0	87.0	6.6
1	Newfoundland and Labrador	1: 700,000	36.00	40.00	92.0	102.0	3.6
2	Prince Edward Island	1: 275,000	34.00	26.00	87.0	67.0	0.7
3	Nova Scotia	1: 800,000	34.00	28.00	87.0	72.0	2.5
4	New Brunswick	1: 700,000	34.00	28.00	87.0	72.0	2.5
5	Quebec	1: 2,500,000	34.00	36.00	87.0	92.0	4.9
6	Quebec East Part	1: 600,000	38.00	35.00	97.0	89.0	3.5
7	Quebec West Part	1: 450,000	34.00	44.00	87.0	112.0	3.3
8	Quebec North Central Part	1: 450,000	36.38	26.88	93.0	69.0	2.0
9	Quebec South Central Part	1: 350,000	39.00	34.00	100.0	87.0	3.4
10	Ontario	1: 2,000,000	36.00	40.00	92.0	102.0	5.0
11	Ontario South Part	1: 800,000	44.00	36.00	112.0	92.0	6.4
12	Manitoba South Part	1: 850,000	34.00	30.00	87.0	77.0	2.9
13	Manitoba North Part	1: 850,000	43.00	36.00	110.0	92.0	1.4
14	Saskatchewan South Part	1: 850,000	40.00	30.00	102.0	77.0	2.4
15	Saskatchewan North Part	1: 850,000	36.00	36.00	92.0	92.0	1.3
16	Alberta South Part	1: 850,000	37.00	36.00	94.0	92.0	2.4
17	Alberta North Part	1: 850,000	42.00	30.00	107.0	77.0	0.8
18	British Columbia	1: 2,000,000	36.00	33.00	92.0	84.0	2.9
19	British Columbia South Central Part	1: 400,000	44.00	36.00	112.0	92.0	1.3
20	British Columbia South West Part	1: 400,000	44.00	36.00	112.0	92.0	1.8
21	Yukon Territory	1: 2,000,000	23.00	28.00	59.0	72.0	1.9
22	Northwest Territories	1: 4,000,000	23.00	28.00	59.0	72.0	5.8
23	Nunavut	1: 4,500,000	30.00	38.00	77.0	97.0	9.9

Census Tract Reference Maps, by Census Metropolitan Areas or Census Agglomerations

The Census Tract Reference Maps, by Census Metropolitan Areas or Census Agglomerations cover all 33 census metropolitan areas and the 15 census agglomerations in the census tract program. The maps show the boundaries and names of census tracts and census subdivisions, designated places and their names, as well as urban core, secondary urban core, urban fringe and rural fringe within the census metropolitan areas or census agglomerations, with one to 10 maps covering each area. There are 131 maps in the series and inset maps were created to show detail for the more concentrated areas.

The maps also display census subdivision boundaries with detailed street network and other visible features such as railroads, rivers and lakes. The maps vary in scale and size; the maximum dimensions are 86 cm by 61 cm (34 inches by 24 inches). The PDF file sizes range from 0.15 MB to 6.5 MB.

The maps are in colour. A reference guide is available (Catalogue no. 92-146-GIE, GWE).

View the Census Tract Reference Maps, by Census Metropolitan Areas or Census Agglomerations online at www.statcan.ca/bsolc/english/bsolc?catno=92-146-U on the Statistics Canada website (www.statcan.ca).

Catalogue no.	Medium	Language	Price	Release date
92-146-UIB	PDF	Bilingual	Free	13 March 2007

Table 1.3 Summary of Census tract reference maps, by census metropolitan areas or census agglomerations

Census metropolitan area (CMA)/ Census agglomeration (CA) name	Number of maps	Census metropolitan area (CMA)/ Census agglomeration (CA) name	Number of maps
Abbotsford, B.C. (CMA)	1	North Bay, Ont. (CA)	1
Barrie, Ont. (CMA)	1	Oshawa, Ont. (CMA)	2
Belleville, Ont. (CA)	2	Ottawa - Gatineau, Ont./Que. (CMA)	4
Brantford, Ont. (CMA)	2	Peterborough, Ont. (CMA)	2
Calgary, Alta. (CMA)	5	Prince George, B.C. (CA)	2
Chilliwack, B.C. (CA)	3	Québec, Que. (CMA)	3
Drummondville, Que. (CA)	1	Red Deer, Alta. (CA)	1
Edmonton, Alta. (CMA)	4	Regina, Sask. (CMA)	2
Fredericton, N.B. (CA)	2	Saguenay, Que. (CMA)	2
Granby, Que. (CA)	1	Saint John, N.B. (CMA)	2
Greater Sudbury/Grand Sudbury, Ont. (CMA)	2	Saint-Jean-sur-Richelieu, Que. (CA)	1
Guelph, Ont. (CMA)	1	Sarnia, Ont. (CA)	2
Halifax, N.S. (CMA)	3	Saskatoon, Sask. (CMA)	2
Hamilton, Ont. (CMA)	4	Sault Ste. Marie, Ont. (CA)	3
Kamloops, B.C. (CA)	4	Sherbrooke, Que. (CMA)	2
Kelowna, B.C. (CMA)	3	St. Catharines - Niagara, Ont. (CMA)	4
Kingston, Ont. (CMA)	2	St. John's, N.L. (CMA)	2
Kitchener, Ont. (CMA)	3	Thunder Bay, Ont. (CMA)	2
Lethbridge, Alta. (CA)	2	Toronto, Ont. (CMA)	10
London, Ont. (CMA)	3	Trois-Rivières, Que. (CMA)	2
Medicine Hat, Alta. (CA)	3	Vancouver, B.C. (CMA)	8
Moncton, N.B. (CMA)	2	Victoria, B.C. (CMA)	2
Montréal, Que. (CMA)	10	Windsor, Ont. (CMA)	2
Nanaimo, B.C. (CA)	2	Winnipeg, Man. (CMA)	2

Dissemination Area Reference Maps, by Census Tracts, for Census Metropolitan Areas and Census Agglomerations

The Dissemination Areas Reference Maps, by Census Tracts, for Census Metropolitan Areas and Census Agglomerations, cover all 33 census metropolitan areas and the 15 census agglomerations that are part of the census tract program. Each map in the series covers one census tract and displays the boundaries and codes of dissemination areas within that tracted area. There are 5,269 maps in the series. Inset maps were created to show detail for the more concentrated areas.

The maps display census tract, census subdivision, and census metropolitan area or census agglomeration boundaries with street network and other visible features such as railroads, rivers and lakes. The dimensions of each map are 27 cm by 43 cm (11 inches by 17 inches). Map scales vary according to the size of the census tract; thus the maps cannot be cut and pasted together. The PDF file sizes range from 0.15 MB to 2.3 MB.

Dissemination area reference maps are also available for non-tracted census agglomerations (Catalogue no. 92-148-UIB), and by census subdivision for areas outside census metropolitan areas and census agglomerations (Catalogue no. 92-145-UIB). Together, the three sets of dissemination area maps cover all of Canada.

A reference guide is available (Catalogue no. 92-145-GIE, GWE).

View the Dissemination Area Reference Maps, by Census Tracts, for Census Metropolitan Areas and Census Agglomerations online at www.statcan.ca/bsolc/english/bsolc?catno=92-147-X on the Statistics Canada website (www.statcan.ca).

Catalogue no.	Medium	Language	Price	Release date
92-147-XIB	PDF	Bilingual	Free	16 January 2007

Figure 1.5 Example of a Dissemination area reference map, by census tracts, for census metropolitan areas and census agglomerations

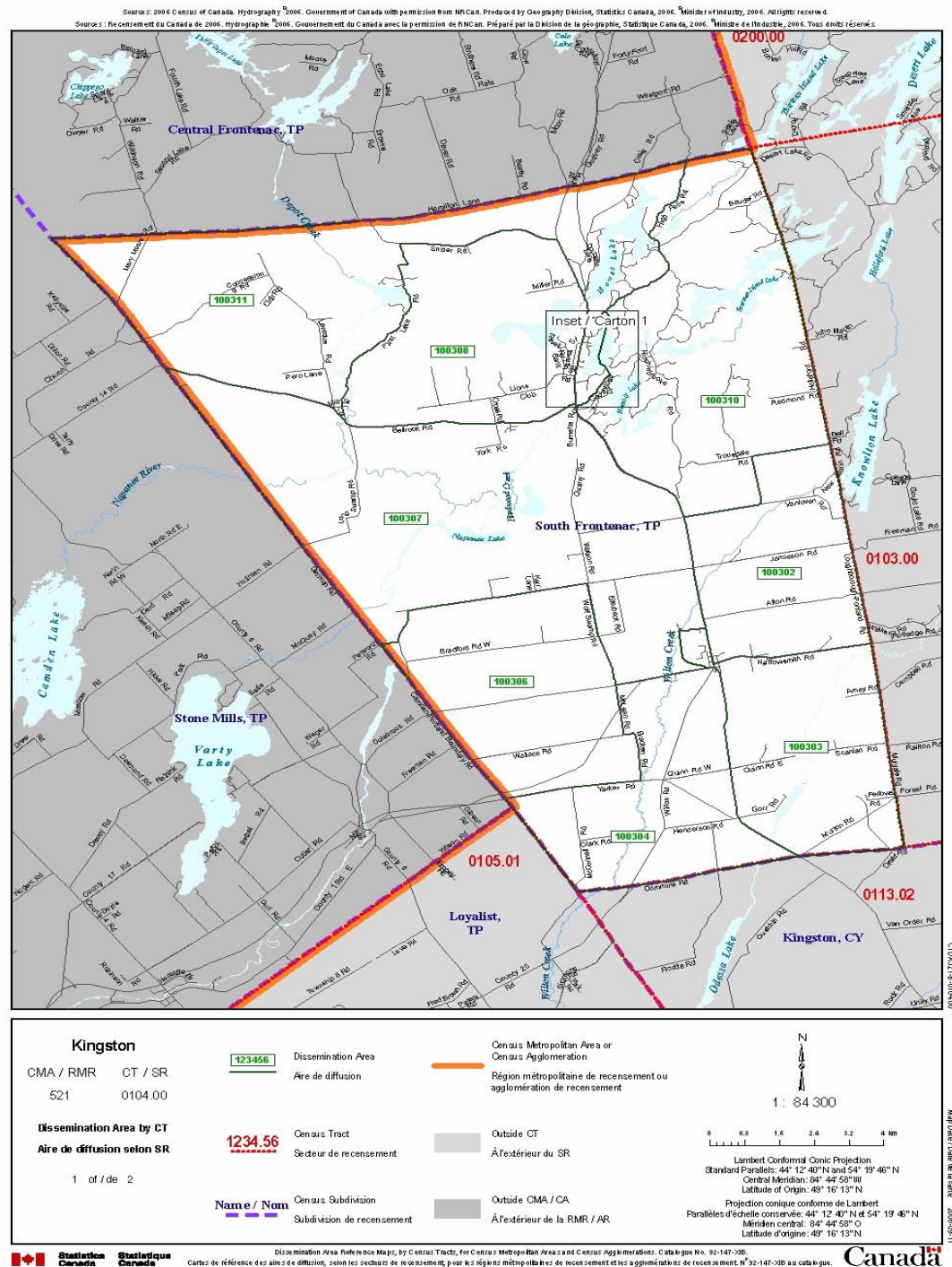
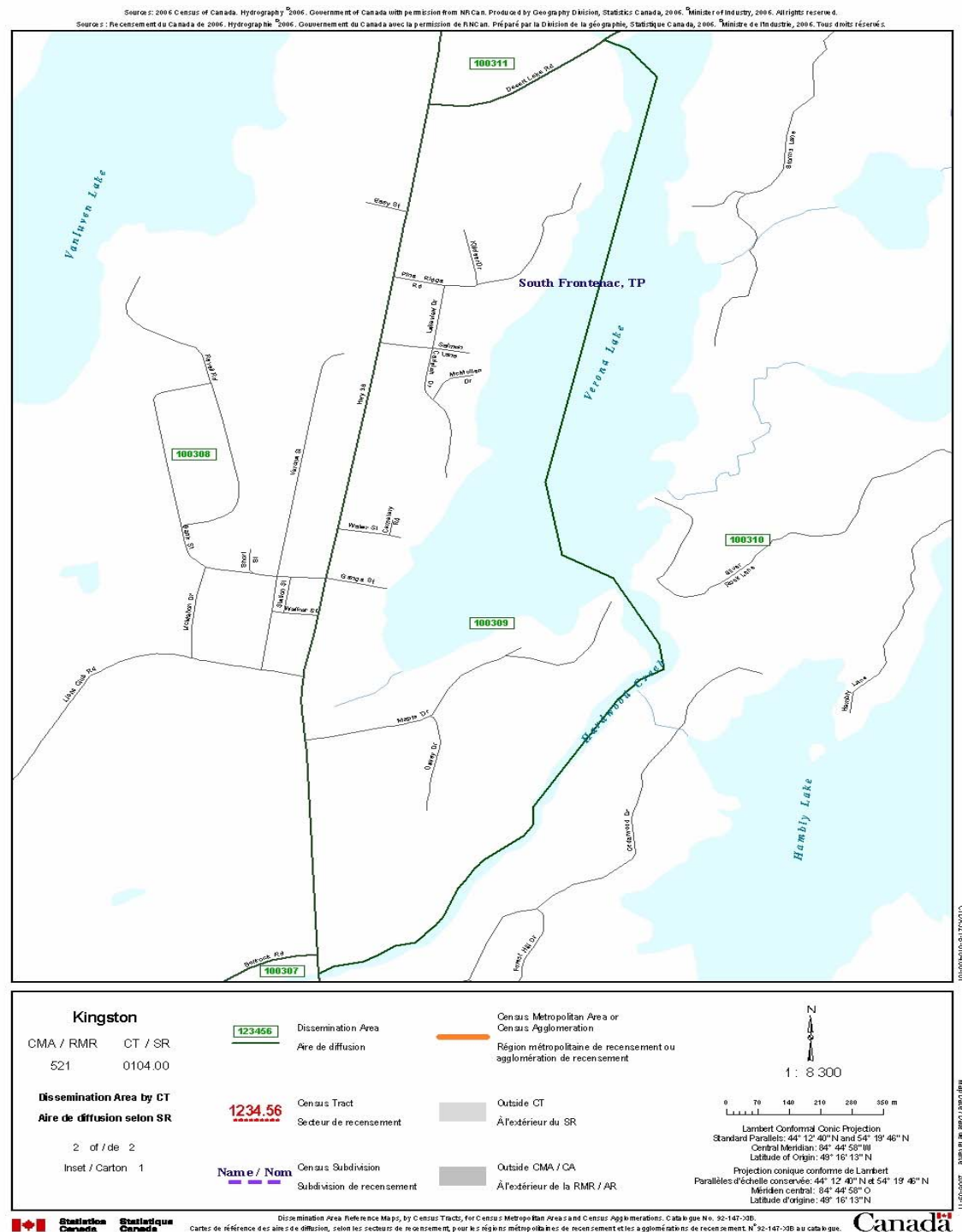


Figure 1.6 Example of an inset from a Dissemination area reference map, by census tracts, for census metropolitan areas and census agglomerations



**Table 1.4 Summary of Dissemination area reference maps, by census tracts,
for census metropolitan areas and census agglomerations**

Census metropolitan area (CMA) or census agglomeration (CA)		Number of census tracts	Number of PDFs
Code	Name		
932	Abbotsford, B.C. (CMA)	35	37
568	Barrie, Ont. (CMA)	32	34
522	Belleville, Ont. (CA)	33	34
543	Brantford, Ont. (CMA)	28	31
825	Calgary, Alta. (CMA)	203	214
930	Chilliwack, B.C. (CA)	30	33
447	Drummondville, Que. (CA)	17	19
835	Edmonton, Alta. (CMA)	229	242
320	Fredericton, N.B. (CA)	26	30
450	Granby, Que. (CA)	18	18
580	Greater Sudbury / Grand Sudbury, Ont. (CMA)	42	45
550	Guelph, Ont. (CMA)	29	30
205	Halifax, N.S. (CMA)	88	93
537	Hamilton, Ont. (CMA)	178	178
925	Kamloops, B.C. (CA)	27	30
915	Kelowna, B.C. (CMA)	36	40
521	Kingston, Ont. (CMA)	40	42
541	Kitchener, Ont. (CMA)	93	95
810	Lethbridge, Alta. (CA)	27	27
555	London, Ont. (CMA)	104	108
805	Medicine Hat, Alta. (CA)	16	17
305	Moncton, N.B. (CMA)	27	30
462	Montréal, Que. (CMA)	878	905
938	Nanaimo, B.C. (CA)	20	22
575	North Bay, Ont. (CA)	20	21
532	Oshawa, Ont. (CMA)	73	78
505	Ottawa - Gatineau, Ont./Que. (CMA)	251	261
529	Peterborough, Ont. (CMA)	27	28
970	Prince George, B.C. (CA)	27	27
421	Québec, Que. (CMA)	166	178
830	Red Deer, Alta. (CA)	16	16
705	Regina, Sask. (CMA)	52	56
408	Saguenay, Que. (CMA)	37	43
310	Saint John, N.B. (CMA)	46	49
459	Saint-Jean-sur-Richelieu, Que. (CA)	35	35
562	Sarnia, Ont. (CA)	24	25
725	Saskatoon, Sask. (CMA)	53	60

Table 1.4 Summary of Dissemination area reference maps, by census tracts, for census metropolitan areas and census agglomerations (continued)

Census metropolitan area (CMA) or census agglomeration (CA)		Number of census tracts	Number of PDFs
Code	Name		
590	Sault Ste. Marie, Ont. (CA)	23	24
433	Sherbrooke, Que. (CMA)	41	44
539	St. Catharines - Niagara, Ont. (CMA)	93	93
001	St. John's, N.L. (CMA)	46	50
595	Thunder Bay, Ont. (CMA)	33	34
535	Toronto, Ont. (CMA)	1,003	1,018
442	Trois-Rivières, Que. (CMA)	37	40
933	Vancouver, B.C. (CMA)	410	421
935	Victoria, B.C. (CMA)	69	69
559	Windsor, Ont. (CMA)	70	70
602	Winnipeg, Man. (CMA)	168	175
Total		5,076	5,269

Dissemination Area Reference Maps, by Non-tracted Census Agglomerations

The Dissemination Area Reference Maps, by Non-tracted Census Agglomerations cover smaller census agglomerations that are not part of the census tract program. Each map in the series covers one census agglomeration and displays the boundaries and codes of dissemination areas, designated places and their names, urban core, urban fringe and rural fringe, within that census agglomeration. There are 271 maps in this series and inset maps were created to show detail for the more concentrated areas.

The maps also display census subdivision boundaries with detailed street network and other visible features such as railroads, rivers and lakes. The maps vary in scale and size, the maximum dimensions being 86 cm by 61 cm (34 inches by 24 inches). The PDF file sizes range from 0.17 MB to 2.4 MB.

Dissemination area reference maps are also available by census tracts for census metropolitan areas and census agglomerations (Catalogue no. 92-147-XIB) and by census subdivisions for areas outside census metropolitan areas and census agglomerations (Catalogue no. 92-145-UIB). Together, the three sets of dissemination area maps cover all of Canada.

The maps are in colour. A reference guide is available (Catalogue no. 92-145-GIE, GWE).

View the Dissemination Area Reference Maps, by Non-tracted Census Agglomerations online at www.statcan.ca/bsolc/english/bsolc?catno=92-148-U on the Statistics Canada website (www.statcan.ca).

Catalogue no.	Medium	Language	Price	Release date
92-148-UIB	PDF	Bilingual	Free	13 March 2007

Figure 1.7 Example of a Dissemination area reference map, by non-tracted census agglomerations

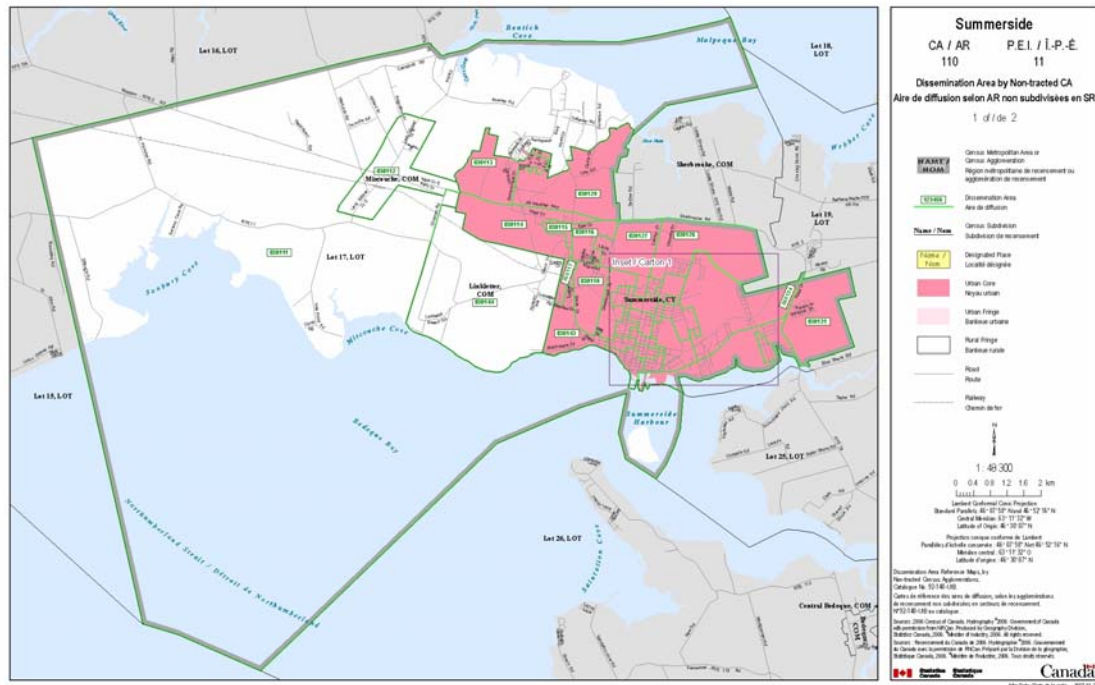


Figure 1.8 Example of an inset from a Dissemination area reference map, by non-tracted census agglomerations

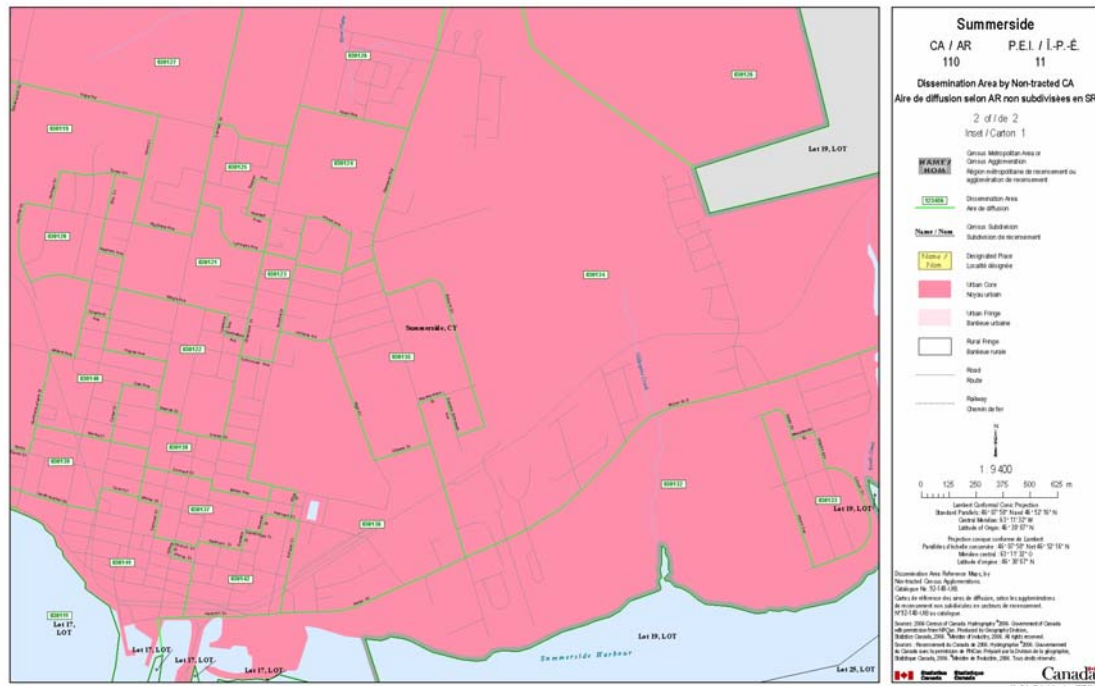


Table 1.5 Summary of Dissemination area reference maps, by non-tracted census agglomerations

Census agglomeration		Number of PDFs	Census agglomeration		Number of PDFs
Code	Name		Code	Name	
410	Alma, Que.	3	446	La Tuque, Que.	5
481	Amos, Que.	2	468	Lachute, Que.	1
406	Baie-Comeau, Que.	4	557	Leamington, Ont.	3
328	Bathurst, N.B.	3	840	Lloydminster, Alta./Sask.	3
005	Bay Roberts, N.L.	1	403	Matane, Que.	2
610	Brandon, Man.	3	571	Midland, Ont.	2
512	Brockville, Ont.	2	329	Miramichi, N.B.	4
806	Brooks, Alta.	5	715	Moose Jaw, Sask.	2
944	Campbell River, B.C.	3	220	New Glasgow, N.S.	4
330	Campbellton, N.B./Que.	3	547	Norfolk, Ont.	6
833	Camrose, Alta.	1	735	North Battleford, Sask.	2
828	Canmore, Alta.	2	820	Okotoks, Alta.	1
225	Cape Breton, N.S.	8	569	Orillia, Ont.	4
531	Centre Wellington, Ont.	2	566	Owen Sound, Ont.	2
105	Charlottetown, P.E.I.	4	939	Parksville, B.C.	3
556	Chatham-Kent, Ont.	9	515	Pembroke, Ont.	2
527	Cobourg, Ont.	1	913	Penticton, B.C.	3
845	Cold Lake, Alta.	1	516	Petawawa, Ont.	1
567	Collingwood, Ont.	2	940	Port Alberni, B.C.	3
015	Corner Brook, N.L.	3	528	Port Hope, Ont.	2
501	Cornwall, Ont.	2	607	Portage la Prairie, Man.	2
943	Courtenay, B.C.	3	945	Powell River, B.C.	2
437	Cowansville, Que.	2	745	Prince Albert, Sask.	2
905	Cranbrook, B.C.	3	955	Prince Rupert, B.C.	2
975	Dawson Creek, B.C.	1	952	Quesnel, B.C.	9
411	Dolbeau-Mistassini, Que.	2	404	Rimouski, Que.	2
937	Duncan, B.C.	5	405	Rivière-du-Loup, Que.	2
335	Edmundston, N.B.	3	485	Rouyn-Noranda, Que.	3
582	Elliot Lake, Ont.	2	428	Saint-Georges, Que.	2
750	Estevan, Sask.	2	452	Saint-Hyacinthe, Que.	2
977	Fort St. John, B.C.	2	465	Salaberry-de-Valleyfield, Que.	2
010	Grand Falls-Windsor, N.L.	1	920	Salmon Arm, B.C.	2
850	Grande Prairie, Alta.	6	412	Sept-Îles, Que.	3
502	Hawkesbury, Ont./Que.	1	444	Shawinigan, Que.	5
533	Ingersoll, Ont.	1	454	Sorel-Tracy, Que.	3
456	Joliette, Que.	2	934	Squamish, B.C.	3
530	Kawartha Lakes, Ont.	3	553	Stratford, Ont.	1
598	Kenora, Ont.	1	110	Summerside, P.E.I.	2
210	Kentville, N.S.	2	720	Swift Current, Sask.	2
960	Kitimat, B.C.	2	584	Temiskaming Shores, Ont.	3

Table 1.5 Summary of Dissemination area reference maps, by non-tracted census agglomerations
(continued)

Census agglomeration		Number of PDFs	Census agglomeration		Number of PDFs
Code	Name		Code	Name	
965	Terrace, B.C.	2	440	Victoriaville, Que.	3
430	Thetford Mines, Que.	3	865	Wetaskiwin, Alta.	1
640	Thompson, Man.	3	990	Whitehorse, Y.T.	4
546	Tillsonburg, Ont.	1	950	Williams Lake, B.C.	2
586	Timmins, Ont.	3	860	Wood Buffalo, Alta.	19
215	Truro, N.S.	2	544	Woodstock, Ont.	1
480	Val-d'Or, Que.	4	995	Yellowknife, N.W.T.	2
918	Vernon, B.C.	2	710	Yorkton, Sask.	2

Dissemination Area Reference Maps, by Census Subdivisions, for areas outside Census Metropolitan Areas and Census Agglomerations

The Dissemination Area Reference Maps, by Census Subdivisions, for areas outside Census Metropolitan Areas and Census Agglomerations cover areas outside census metropolitan areas and census agglomerations. Each map in this series covers one census subdivision and displays the boundaries and codes of dissemination areas, designated places and their names, as well as urban and rural areas within that census subdivision. There are 4,470 maps in this series.

The maps also display census subdivision boundaries with detailed street network and other visible features such as railroads, rivers and lakes. The maps vary in scale and size; the maximum dimensions are 86 cm by 61 cm (34 inches by 24 inches). The PDF file sizes range from 0.17 MB to 6.0 MB.

Dissemination areas reference maps are also available by census tracts for census metropolitan areas and census agglomerations (Catalogue no. 92-147-XIB), and by non-tracted census agglomerations (Catalogue no. 92-148-UIB). Together, the three sets of dissemination area maps cover all of Canada.

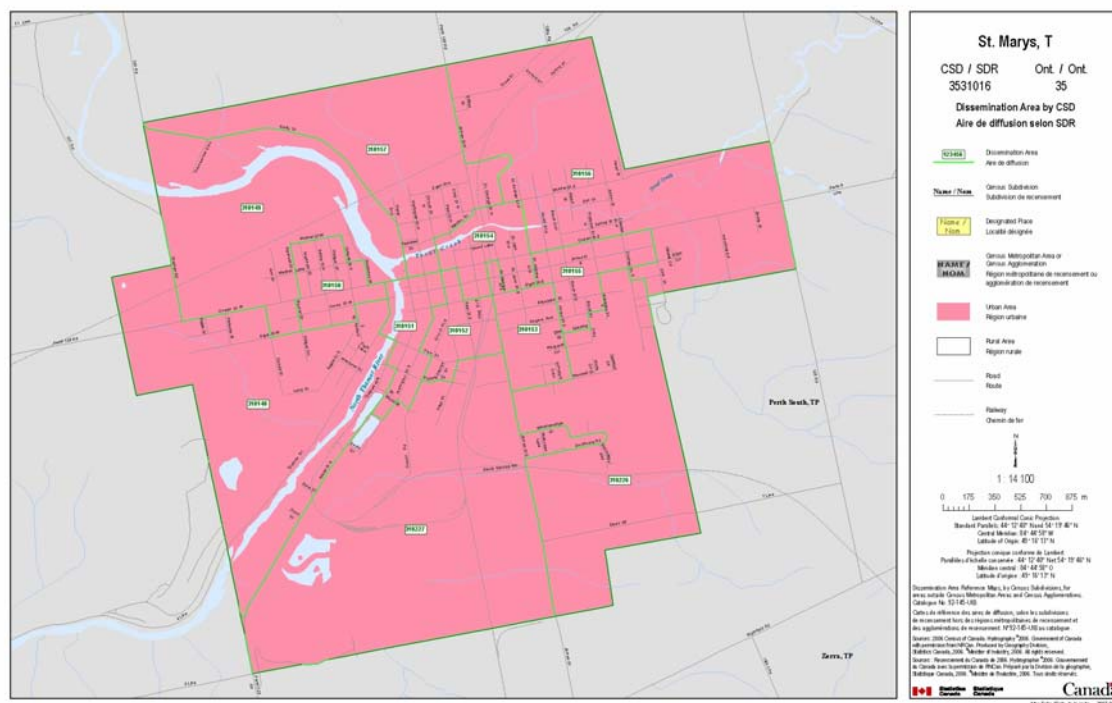
The maps are in colour. A reference guide is available (Catalogue no. 92-145-GIE, GWE).

View the Dissemination Area Reference Maps, by Census Subdivisions, for areas outside Census Metropolitan Areas and Census Agglomerations online at www.statcan.ca/bsolc/english/bsolc?catno=92-145-U on the Statistics Canada website (www.statcan.ca).

Catalogue no.	Medium	Language	Price	Release date
92-145-UIB	PDF	Bilingual	Free	13 March 2007

Province/territory name	Number of Dissemination area reference maps, by census subdivisions, for areas outside census metropolitan areas and census agglomerations
Newfoundland and Labrador	350
Prince Edward Island	90
Nova Scotia	77
New Brunswick	207
Quebec	1,066
Ontario	440
Manitoba	274
Saskatchewan	919
Alberta	353
British Columbia	597
Yukon Territory	30
Northwest Territories	36
Nunavut	31
Total	4,470

Figure 1.9 Example of a Dissemination area reference map, by census subdivision, for areas outside census metropolitan areas and census agglomerations



Thematic maps – 2006 Census

A thematic map shows the spatial distribution of one or more specific data themes. These maps may be qualitative in nature (e.g., showing different types of farms) or quantitative (e.g., percentage population change).

Thematic maps showing 2006 Census data are in colour. Map dimensions are 21.6 cm by 27.9 cm (8.5 inches by 11 inches). Thematic maps can be viewed and downloaded for free as PDF files at www.statcan.ca/bsolc/english/bsolc?catno=92-173-X on the Statistics Canada website (www.statcan.ca). A number of thematic map animations can be viewed throughout the Statistics Canada website.

Maps covering the following areas are available:

- World
- Canada
- Provinces
- Regions
- Census metropolitan areas
- Census subdivisions.

Thematic maps are available for the following Census topics:

Release topic	Release date
Population and dwelling counts	13 March 2007
Age and sex	17 July 2007
Marital status (including common-law status) Families and households	12 September 2007
Language Immigration and citizenship	4 December 2007
Aboriginal peoples	15 January 2008
Labour (including labour market activity, industry and occupation) Education	4 March 2008
Place of work and commuting to work (including mode of transportation) Visible minorities	2 April 2008
Income Earnings	1 May 2008
Shelter costs	4 June 2008
Mobility	26 June 2008

Catalogue no.	Title	Medium	Language	Price	Release date
92-173-XIE	Thematic maps, 2006 Census	PDF	English	Free	13 March 2007
92-173-XIF	Thematic maps, 2006 Census	PDF	French	Free	13 March 2007

Geography Working Paper Series

The Geography Working Paper Series is intended to stimulate discussion on a variety of topics covering conceptual, methodological or technical work to support the development and dissemination of the division's data, products and services. Readers of the series are encouraged to contact the Geography Division with comments and suggestions at GEO-Help at 613-951-3889.

The working papers are available for free at www.statcan.ca/bsolc/english/bsolc?catno=92F0138M on the Statistics Canada website (www.statcan.ca). A print version is also available for a nominal charge.

Catalogue no.	Title	Medium	Language	Price
92F0138MWE	Geography Working Paper Series	Internet	English	Free
92F0138MWF	Geography Working Paper Series	Internet	French	Free
92F0138MIE	Geography Working Paper Series	PDF	English	Free
92F0138MIF	Geography Working Paper Series	PDF	French	Free
92F0138MPE	Geography Working Paper Series	Print	English	Fee
92F0138MPF	Geography Working Paper Series	Print	French	Fee

Table 1.7 Titles in the Geography working paper series

Catalogue numbers	Working paper title
92F0138MWE2008003 92F0138MIE2008003	The Population Ecumene of Canada: Exploring the Past and Present
92F0138MWE2008002 92F0138MIE2008002	Defining and Measuring Metropolitan Areas: A Comparison between Canada and the United States
92F0138MWE2008001 92F0138MIE2008001	Delineation of 2006 Urban Areas: Challenges and Achievements
92F0138MWE2007001 92F0138MIE2007001	How Postal Codes Map to Geographic Areas
92F0138MIE2003002	Preliminary 2006 Census Metropolitan Area and Census Agglomerations Delineation
92F0138MIE2003001	Reviewing Census Metropolitan Areas (CMA) and Census Agglomerations (CA) in Canada According to Metropolitan Functionality

Interim List of Changes to Municipal Boundaries, Status and Names

The *Interim List of Changes to Municipal Boundaries, Status, and Names* is a report that provides a summary of changes to municipal boundaries, status and names. The list is produced on an annual basis for changes that occurred during the previous year. The Geography Division of Statistics Canada processes the municipal changes based on information received through provincial/territorial gazettes, letters patent, and orders-in-council. The Interim List may or may not include all changes occurring within the given time period.

The Interim List is available at www.statcan.ca/bsolc/english/bsolc?catno=92F0009XWE#formatdisp on the Statistics Canada website (www.statcan.ca).

Catalogue no.	Medium	Language	Price	Release date
92F0009XWE	Internet	English	Free	Annual
92F0009XWF	Internet	French	Free	Annual
92F0009XIB	PDF	Bilingual	Free	Annual

Standard Geographical Classification (SGC)

The Standard Geographical Classification (SGC) is a system of names and codes representing areas of Canada. It consists of a three-tiered hierarchy: province or territory, census division and census subdivision. This relationship is reflected in the seven-digit code. The SGC is used to identify information for particular geographical areas and to tabulate statistics.

Information about the 2006 Standard Geographical Classification is organized into two volumes.

Standard Geographical Classification (SGC). Volume I. The Classification

Volume I, The Classification, is designed as a reference and coding manual. The classification volume contains tables of Standard Geographical Classification units with their names and codes, related areas based upon the SGC and an alphabetical index of place names. It summarizes all changes occurring between 2001 and 2006 that impact directly upon the SGC.

The *Standard Geographic Classification (SGC), Volume I. The Classification* is available at www.statcan.ca/bsolc/english/bsolc?catno=12-571-X on the Statistics Canada website (www.statcan.ca).

Catalogue no.	Medium	Language	Price	Release date
12-571-XWE	Internet	English	Free	16 January 2007
12-571-XWF	Internet	French	Free	16 January 2007
12-571-XIE	PDF	English	Free	16 January 2007
12-571-XIF	PDF	French	Free	16 January 2007

Standard Geographical Classification (SGC). Volume II. Reference Maps

Volume II, Reference Maps, shows the boundaries, names and Standard Geographical Classification codes of all census divisions and census subdivisions in Canada, in effect on January 1, 2006. It also provides the names, codes and areal extent of census metropolitan areas and census agglomerations. National maps show the boundaries, names and codes of census divisions and economic regions and also the Statistical Area Classification by census subdivision. For information on ordering individual map sheets, see *Census Division and Census Subdivision Reference Maps* in this catalogue.

The *Standard Geographic Classification (SGC), Volume II, Reference Maps* are available at www.statcan.ca/bsolc/english/bsolc?catno=12-572-X on the Statistics Canada website (www.statcan.ca).

Catalogue no.	Medium	Language	Price	Release date
12-572-XWE	Internet	English	Free	18 October 2006
12-572-XWF	Internet	French	Free	18 October 2006
12-572-XPB	Print	Bilingual	\$135	16 January 2007

2. Geographic data products

Geographic data products are those that contain 2006 Census Population and Dwelling counts.

What's new?

- Population and dwelling counts for all standard geographic areas are available free on the Statistics Canada website beginning March 13, 2007 through GeoSearch2006 and the Population and Dwelling Highlights tables.
- The GeoSuite CD-ROM includes the '2001 Dissemination Area to 2006 Dissemination Area' and '2001 Dissemination Block to 2006 Dissemination Block' correspondence lists as separate flat ASCII files.
- GeoSearch2006 displays population and dwelling counts for selected places. For the first time, GeoSearch2006 will serve as a point of entry for the community profiles.
- Geographic Attribute File is once again available for the 2006 Census. It was last disseminated in 1991.

Population and dwelling counts, 2006 Census

These tables provide population and dwelling counts established by the 2006 Census of Population. The levels of geography covered are Canada, provinces and territories, and other geographic areas including census subdivisions (municipalities), census metropolitan areas and census agglomerations. For selected geographies, the tables provide percentage change in the population counts between 2001 and 2006. Data are also provided for land area and population density. Geographic boundaries are those in effect on January 1, 2006.

A few options are available for accessing these tables:

- Free on the Statistics Canada website (www.statcan.ca) under the census module (www12.statcan.ca/english/census06/data/highlights/index.cfm).
- A *National Overview* print publication available at www.statcan.ca/bsolc/english/bsolc?catno=92-200-XPB on the Statistics Canada website (www.statcan.ca).

Catalogue no.	Title	Medium	Language	Price	Release date
97-550-XWE2006002	Population and Dwelling Count Highlight Tables	Internet	English	Free	13 March 2007
97-550-XWF2006002	Population and Dwelling Count Highlight Tables	Internet	French	Free	13 March 2007
92-200-XPB	A National Overview	Print	Bilingual	\$40	28 June 2007

GeoSuite

GeoSuite is a tool for data retrieval, query and tabular output, with software and data on a CD-ROM. GeoSuite allows users to explore the links between all standard levels of geography and to determine geographic codes, names, and population and dwelling counts. GeoSuite includes a dissemination area reference map listing that facilitates identification of appropriate dissemination area reference maps.

Note: The GeoSuite CD-ROM includes the '2001 Dissemination Area to 2006 Dissemination Area' and '2001 Dissemination Block to 2006 Dissemination Block' correspondence lists as separate flat ASCII files. The GeoSuite CD-ROM also includes the reference guide as a PDF file or RTF. The reference guide describes the content and provides explanations of the various functions of the product, as well as installation instructions and other information.

Computer requirements:

- IBM-compatible microcomputer with a Pentium Class processor
- 32 MB RAM required, 64 MB RAM recommended
- Hard disk with 20 MB for the application only; 150 MB for full installation, including data
- SVGA monitor and graphics card (800 x 600, 256 colours, or better)
- CD-ROM drive
- Mouse or compatible pointing device

GeoSuite can be purchased at www.statcan.ca/bsolc/english/bsolc?catno=92-150-X on the Statistics Canada website (www.statcan.ca).

Catalogue no.	Medium	Language	Price	Release date
92-150-XCB	CD-ROM	Bilingual	\$65	13 March 2007
92-150-XBB	Downloadable database	Bilingual	\$65	13 March 2007

Figure 2.1 View of GeoSuite 2006, step 1: name search

Step 1 of 4: Name Search

Name: Level:

Name	Code
Gibson Heights	044390
Gibson Township	044391
Gibson Woods	004845
Gibsons	037615

2006 Census Info | Geographic Levels | 2001 Census Info

LOC: Prov/Terr:

UID:

CD:

CSD:

DA:

Block:

Latitude:

Longitude:

Locator Source:

Dissolved GA:

Lambert X:

Lambert Y:

Geographic Attribute File

The Geographic Attribute File is an ASCII file which assigns each dissemination block (the basic geographical unit of census data dissemination) the codes and names of all higher geographic levels. The population and private dwelling counts (presented as total private dwellings and private dwellings occupied by usual residents) for all dissemination blocks are also represented.

The Geographic Attribute File is available for purchase at www.statcan.ca/bsolc/english/bsolc?catno=92-151-X on the Statistics Canada website (www.statcan.ca).

Catalogue no.	Medium	Language	Price	Release date
92-151-XBB	Downloadable database	Bilingual	\$65	13 March 2007

Correspondence Files

Three correspondence files are available. The Dissemination Area Correspondence File is a tabular product that describes the relationship between the 2006 dissemination area and the 2001 dissemination area. The Dissemination Area and Land Area Correspondence File describes the percentage of the 2006 dissemination area's land area within the boundaries of the 2001 dissemination area. The Dissemination Block Correspondence File describes the relationship between the 2006 dissemination block and the 2001 dissemination block.

Each file contains a unique identifier for the current census geographic area and the corresponding unique identifier for the previous census geographic area. In addition, a relationship flag is included which indicates the degree of correspondence between the geographic areas, facilitating the comparison between census years.

A reference guide is available for the 2006 Correspondence Files (Catalogue no. 92-156-GIE, GWE).

Correspondence files are available at www.statcan.ca/bsolc/english/bsolc?catno=92-156-X on the Statistics Canada website (www.statcan.ca).

Catalogue no.	Medium	Language	Price	Release date
92-156-XBB	Downloadable database	Bilingual	Free	14 February 2007

GeoSearch2006

Redesigned for 2006, this interactive mapping application makes it easy to find many places in Canada, see them on a map, and get basic geographic and demographic data for those places. To find a specific place of interest, users can click and zoom in on a map of Canada or they can search by place name, street name, street intersection or postal code. GeoSearch2006 will display the appropriate map showing boundaries and other features. GeoSearch2006 automatically displays population and dwelling counts for the selected places, and shows what kind of census geographic area it is and its relationship to other census geographic areas.

New functionality for 2006 includes links to 2006 Census reference maps and community profile tables, and a thematic mapping option for selected census topics (for selected levels of geography).

Thematic variables available in GeoSearch2006 include:

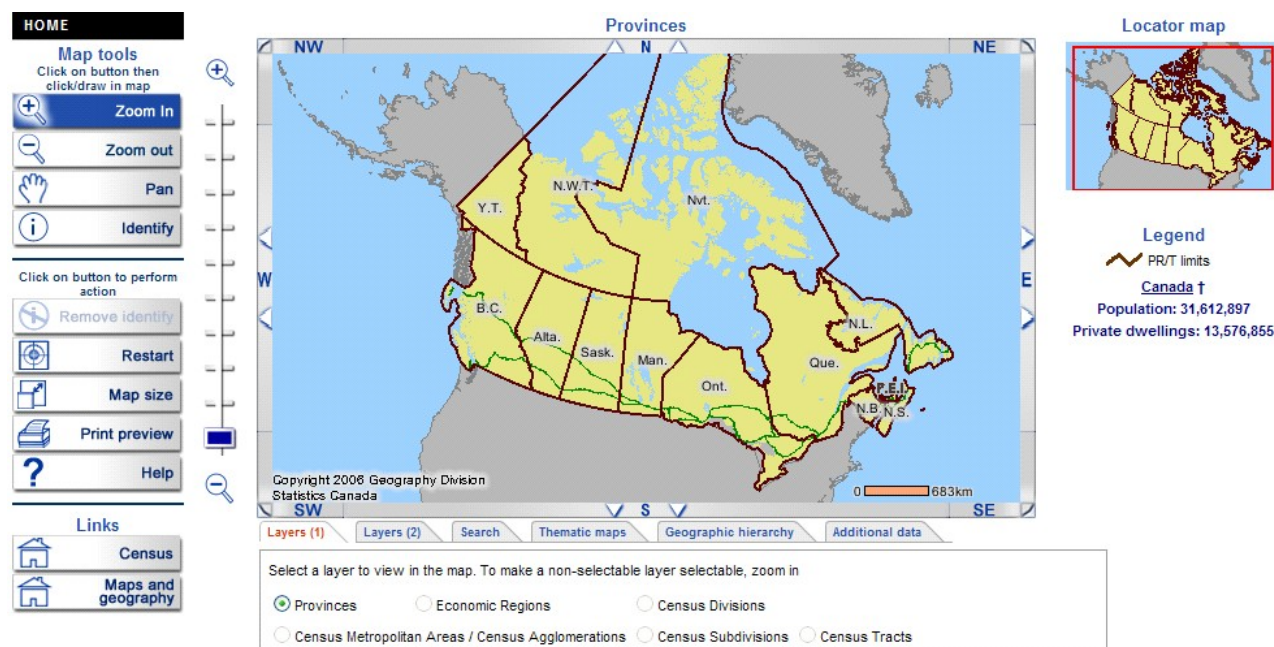
- **Population and Dwelling Counts** – March 13, 2007
 - Population density persons per square kilometre, 2006
 - Population change, 2001 - 2006 (Percentage change)
- **Age and Sex** – July 17, 2007
 - Median age
 - Percentage of population aged 14 years and under
 - Percentage of population aged 65 years and over
- **Families and Households** – September 12, 2007
 - Percentage of census families who are lone parent
 - Percentage of private households containing couples with children under age 25 at home
- **Language, Immigration and Citizenship** – December 4, 2007
 - Percentage of anglophones (Population with English as mother tongue)
 - Percentage of francophones (Population with French as mother tongue)
 - Percentage of allophones (Population with a mother tongue other than English or French)
 - Percentage of population speaking English most often at home
 - Percentage of population speaking French most often at home
 - Immigrants as a percentage of total population
- **Aboriginal peoples** – January 15, 2008
 - Percentage of population with an Aboriginal Identity
 - Percentage of population with a North American Indian Identity
 - Percentage of population with a Métis Identity
 - Percentage of population with an Inuit Identity
- **Labour and Education** – March 4, 2008
 - Unemployment Rate, for the Population 15 years and Older
 - Employment Rate, for the Population 15 years and Older
 - Average Annual Employment Growth 2001 to 2006, for the Population 15 years and Older
 - Educational Attainment - Percentage University Certificate, Diploma or Degree
 - Educational Attainment - Percentage College, CEGEP or Other Non-university Certificate or Diploma
 - Educational Attainment - Percentage Apprenticeship or Trades Certificate or Diploma
 - Educational Attainment - Percentage High School Certificate or Equivalent
 - Educational Attainment - Percentage Less than High School

- **Ethnic Origin, Visible Minorities and Place of Work** – April 2, 2008
 - Median Commuting Distance by Place of Residence
 - Percentage employed labour force using a sustainable mode of transportation to get to work (place of work)
 - Percentage of visible minorities
- **Income and Earnings** – May 1, 2008
- **Shelter Costs** – June 4, 2008

To view GeoSearch2006, visit www.statcan.ca/bsolc/english/bsolc?catno=92-197-X on the Statistics Canada website (www.statcan.ca).

Catalogue no.	Medium	Language	Price	Release date
92-197-XWE	Internet	English	Free	13 March 2007
92-197-XWF	Internet	French	Free	13 March 2007

Figure 2.2 View of GeoSearch2006 on the Statistics Canada website



3. Spatial information products

Spatial information provides the shape and location of geographic features. The boundaries, road network and other features of standard geographic areas are available in digital form for mapping and geographic information system applications. These products include Digital Boundary Files, Cartographic Boundary Files, Road Network Files, and Road Network and Geographic Attribute Files.

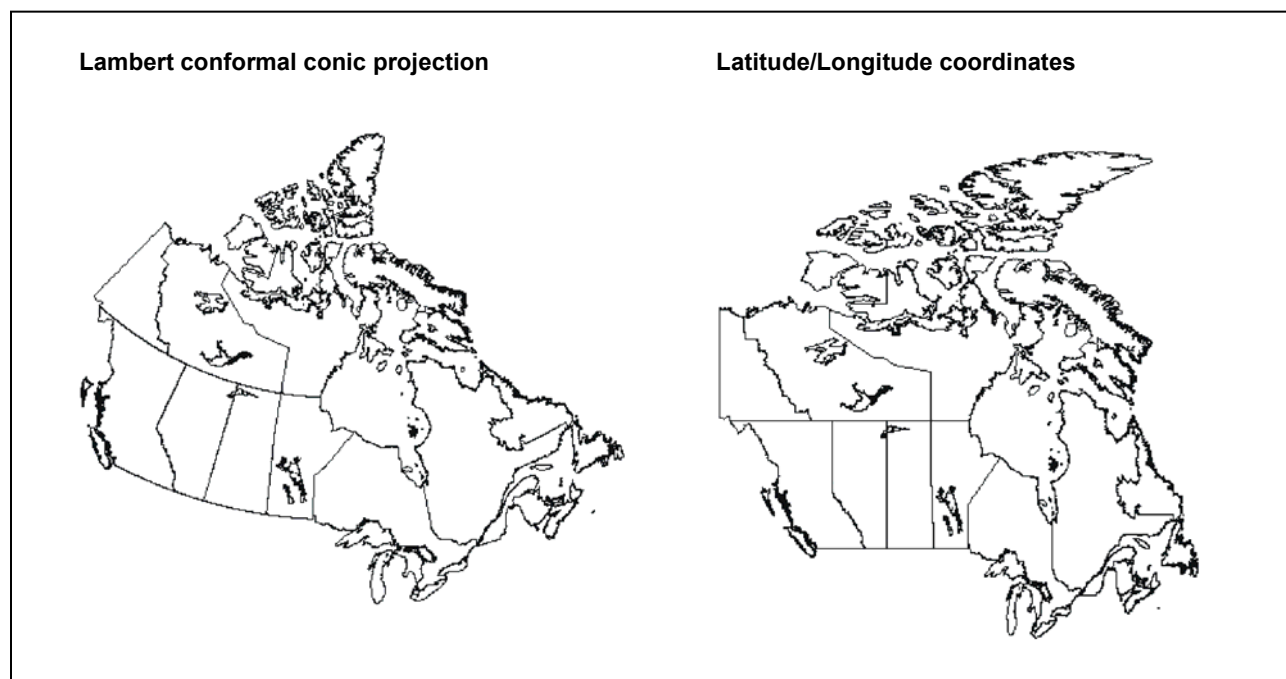
What's new?

- Digital Boundary Files are once again available.
- Boundary Files for provinces/territories, census divisions, census consolidated subdivisions, census subdivisions, economic regions and census metropolitan areas/census agglomerations are available free of charge, downloadable on the Statistics Canada website (www.statcan.ca) at www.statcan.ca/bsolc/english/bsolc?catno=92-160-X.
- The Road Network File is available on an annual basis, free of charge, downloadable on the Statistics Canada website (www.statcan.ca) at www.statcan.ca/bsolc/english/bsolc?catno=92-500-X.
- The Road Network and Geographic Attribute File covers all of Canada. Roads are assigned a rank according to four levels of detail. Roads arcs also include geographic attribute information such as left-side and right-side province and territory, census subdivision, census metropolitan area and census agglomeration and census tract names and codes.
- Boundary Files and Road Network Files are now available in Geography Markup Language (GML).
- Spatial Information Products can be purchased through e-commerce on the Statistics Canada website (www.statcan.ca) at www12.statcan.ca/english/census06/geo/index.cfm.

Spatial data quality elements provide information on the fitness-for-use of a spatial database by describing why, when and how the data are created, and the accuracy of the data. The elements include an overview describing the purpose and usage, as well as specific quality elements reporting on the lineage, positional accuracy, attribute accuracy, logical consistency and completeness. This information is provided to users for all spatial data products.

Note: Although the spatial information products are disseminated in latitude/longitude coordinates (as a convenient way of transferring geographic data), maps should not be generated using these spherical coordinates as they are unprojected, resulting in a map that is distorted (see Figure 3.1). Users can convert the latitude/longitude coordinates to the desired map projection(s) using their geographic information system software. Users should also be aware that different spatial datasets can be in the same coordinate system or projection but not in the same datum, in which case the data will not be spatially coincident. Data overlay discrepancies will occur if spatial data from the 2006 Census, which are based on NAD83, are overlaid with data based on NAD27.

Figure 3.1 Example of a map projection and unprojected coordinates



Boundary Files, 2006 Census

There are two types of boundary files: digital and cartographic. Digital files depict the full extent of the geographical areas, including the coastal water area. Cartographic files depict the geographical areas using only the major land mass of Canada and its coastal islands. Figure 3.2 shows an example of Digital and Cartographic Boundary Files. The files provide a framework for mapping and spatial analysis using commercially available geographic information systems or other mapping software. They are positionally consistent with the 2006 Road Network File and 2006 Road Network and Geographic Attribute File, which can provide additional geographic context for mapping applications.

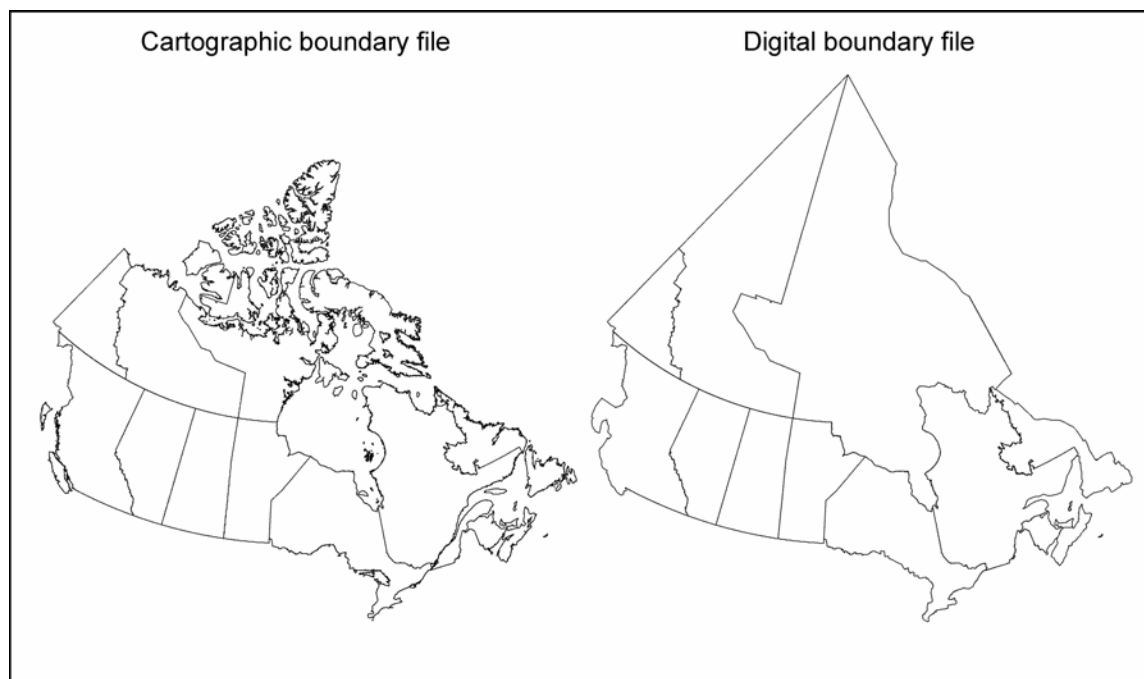
A reference guide is available (Catalogue no. 92-160-GIE, GWE).

Boundary files are available at www.statcan.ca/bsolc/english/bsolc?catno=92-160-X on the Statistics Canada website (www.statcan.ca).

Coordinates: Latitude/longitude and are based on the North American Datum of 1983 (NAD83).

Format: ArcInfo® (.SHP), Geography Markup Language (.GML), and MapInfo® (.TAB) (software not included).

Figure 3.2 Example of a cartographic boundary file and a digital boundary file (provinces and territories), 2006 Census



Note: The Geography Markup Language (GML) is an XML encoding for the modelling, transport and storage of geographic information including both the spatial and non-spatial properties of geographic features. This specification defines the XML Schema syntax, mechanisms, and conventions that:

- Provide an open, vendor-neutral framework for the definition of geospatial application schemas and objects
- Allow profiles that support proper subsets of GML framework descriptive capabilities
- Support the description of geospatial application schemas for specialized domains and information communities
- Enable the creation and maintenance of linked geographic application schemas and datasets
- Support the storage and transport of application schemas and datasets
- Increase the ability of organizations to share geographic application schemas and the information they describe.

Price note: Prices and catalogue numbers vary by type of geographic boundary. Custom orders are available on request. Contact us through the National inquiries line at 1-800-263-1136, by e-mail at infostats@statcan.ca or visit our website at www.statcan.ca.

Province and Territory Boundary Files

The Province and Territory Boundary Files portray the boundaries of the 10 provinces and three territories that make up Canada. Provinces and territories are the major political units of Canada. The Province and Territory Boundary Files are available as a standard package for Canada.

Type of file	Catalogue no.	Medium	Language	Price	Release date
Digital Boundary File	92-160-XWE	Internet	English	Free	18 October 2006
Digital Boundary File	92-160-XWF	Internet	French	Free	18 October 2006
Cartographic Boundary File	92-160-XWE	Internet	English	Free	18 October 2006
Cartographic Boundary File	92-160-XWF	Internet	French	Free	18 October 2006

Census Division Boundary Files

The Census Division Boundary Files portray the census division boundaries for which 2006 Census data are disseminated. A census division is a unit of regional government (such as a county or regional district) or an area treated as equivalent for statistical purposes. A census division is usually made up of a number of adjacent municipalities. The files contain the boundaries of all 288 census divisions which combined cover all of Canada. The Census Division Boundary Files are available as a standard package for Canada.

Type of file	Catalogue no.	Medium	Language	Price	Release date
Digital Boundary File	92-160-XWE	Internet	English	Free	18 October 2006
Digital Boundary File	92-160-XWF	Internet	French	Free	18 October 2006
Cartographic Boundary File	92-160-XWE	Internet	English	Free	18 October 2006
Cartographic Boundary File	92-160-XWF	Internet	French	Free	18 October 2006

Census Consolidated Subdivision Boundary Files

The Census Consolidated Subdivision Boundary Files portray the census consolidated subdivision boundaries for which 2006 Census data are disseminated. A census consolidated subdivision is a grouping of adjacent census subdivisions (municipalities) used primarily for disseminating Census of Agriculture data. The files contain the boundaries of all 2,341 census consolidated subdivisions which combined cover all of Canada. The Census Consolidated Subdivision Boundary Files are available as a standard package for Canada.

Type of file	Catalogue no.	Medium	Language	Price	Release date
Digital Boundary File	92-160-XWE	Internet	English	Free	18 October 2006
Digital Boundary File	92-160-XWF	Internet	French	Free	18 October 2006
Cartographic Boundary File	92-160-XWE	Internet	English	Free	18 October 2006
Cartographic Boundary File	92-160-XWF	Internet	French	Free	18 October 2006

Census Subdivision Boundary Files

The Census Subdivision Boundary Files portray the census subdivision boundaries for which 2006 Census data are disseminated. A census subdivision is a municipality or an area treated as equivalent to a municipality for statistical purposes (for example, Indian reserves and unorganized territories). The files contain the boundaries of all 5,418 census subdivisions which combined cover all of Canada. The Census Subdivision Boundary Files are available as a standard package for Canada.

Type of file	Catalogue no.	Medium	Language	Price	Release date
Digital Boundary File	92-160-XWE	Internet	English	Free	18 October 2006
Digital Boundary File	92-160-XWF	Internet	French	Free	18 October 2006
Cartographic Boundary File	92-160-XWE	Internet	English	Free	18 October 2006
Cartographic Boundary File	92-160-XWF	Internet	French	Free	18 October 2006

The 2008 Census Subdivision Boundary File contains the boundaries of all 5,405 census subdivisions which combined cover all of Canada. The 2008 Census Subdivision Boundary File does not replace the 2006 Census Subdivision Boundary File, which is a similar product available as part of the 2006 suite of Geography products, and used in conjunction with products and services from the 2006 Census. The 2008 Census Subdivision Boundary File is available as a standard package for Canada.

Type of file	Catalogue no.	Medium	Language	Price	Release date
Digital Boundary File	92-162-XWE	Internet	English	Free	22 May 2008
Digital Boundary File	92-162-XWF	Internet	French	Free	22 May 2008

Economic Region Boundary Files

The Economic Region Boundary Files portray the economic region boundaries for which 2006 Census data are disseminated. An economic region is a grouping of complete census divisions (with one exception in Ontario) created as a standard geographic unit for analysis of regional economic activity. The files contain the boundaries of all 76 economic regions which combined cover all of Canada. The Economic Region Boundary Files are available as a standard package for Canada.

Type of file	Catalogue no.	Medium	Language	Price	Release date
Digital Boundary File	92-160-XWE	Internet	English	Free	18 October 2006
Digital Boundary File	92-160-XWF	Internet	French	Free	18 October 2006
Cartographic Boundary File	92-160-XWE	Internet	English	Free	18 October 2006
Cartographic Boundary File	92-160-XWF	Internet	French	Free	18 October 2006

Census Metropolitan Area and Census Agglomeration Boundary Files

The Census Metropolitan Area and Census Agglomeration Boundary Files portray the boundaries of the 33 census metropolitan areas and 111 census agglomerations for which 2006 Census data are disseminated. Census metropolitan areas and census agglomerations consist of one or more adjacent municipalities (census subdivisions) around an urban core. To form a census metropolitan area, the urban core must have a population of at least 50,000 and the entire census metropolitan area must have a total population of at least 100,000. To form a census agglomeration, the urban core must have a population of at least 10,000. The files contain the boundaries of all 144 census metropolitan areas and census agglomerations defined for the 2006 Census. The Census Metropolitan Area and Census Agglomeration Boundary Files are available as a standard package for Canada.

Type of file	Catalogue no.	Medium	Language	Price	Release date
Digital Boundary File	92-160-XWE	Internet	English	Free	18 October 2006
Digital Boundary File	92-160-XWF	Internet	French	Free	18 October 2006
Cartographic Boundary File	92-160-XWE	Internet	English	Free	18 October 2006
Cartographic Boundary File	92-160-XWF	Internet	French	Free	18 October 2006

Federal Electoral District Boundary Files (2003 Representation Order)

The Federal Electoral District Boundary Files portray the federal electoral district boundaries for which 2006 Census data are disseminated. A federal electoral district is an area represented by a Member of the House of Commons. The federal electoral district boundaries used for the 2006 Census are based on the 2003 Representation Order. The files contain the boundaries of all 308 federal electoral districts which combined cover all of Canada. The Federal Electoral District Boundary Files are available as a standard package for Canada.

The Federal Electoral District Boundary Files can be purchased on the Statistics Canada website (www.statcan.ca) at www.statcan.ca/bsolc/english/bsolc?catno=92-171-X.

Type of boundary file	Catalogue no.	Medium	Language	Price	Release date
Digital Boundary File	92-171-XWE	Internet	English	\$110	14 February 2007
Digital Boundary File	92-171-XWF	Internet	French	\$110	14 February 2007
Cartographic Boundary File	92-171-XWE	Internet	English	\$110	14 February 2007
Cartographic Boundary File	92-171-XWF	Internet	French	\$110	14 February 2007
Digital Boundary File	92-171-XCE	CD-ROM	English	\$110	14 February 2007
Digital Boundary File	92-171-XCF	CD-ROM	French	\$110	14 February 2007
Cartographic Boundary File	92-171-XCE	CD-ROM	English	\$110	14 February 2007
Cartographic Boundary File	92-171-XCF	CD-ROM	French	\$110	14 February 2007

Census Tract Boundary Files

The Census Tract Boundary Files portray the census tract boundaries for which 2006 Census data are disseminated. Census tracts are small, relatively stable geographic areas that usually have a population of 2,500 to 8,000. They are located in census metropolitan areas and in census agglomerations with an urban core population of 50,000 or more in the previous census. The files contain the boundaries of all 5,076 census tracts located within the 33 census metropolitan areas and 15 census agglomerations for which census tracts are delineated. The Census Tract Boundary Files are available as a standard package for Canada.

The Census Tract Boundary Files can be purchased on the Statistics Canada website (www.statcan.ca) at www.statcan.ca/bsolc/english/bsolc?catno=92-168-X.

Type of boundary file	Catalogue no.	Medium	Language	Price	Release date
Digital Boundary File	92-168-XWE	Internet	English	\$1,000	14 February 2007
Digital Boundary File	92-168-XWF	Internet	French	\$1,000	14 February 2007
Cartographic Boundary File	92-168-XWE	Internet	English	\$1,000	14 February 2007
Cartographic Boundary File	92-168-XWF	Internet	French	\$1,000	14 February 2007
Digital Boundary File	92-168-XCE	CD-ROM	English	\$1,000	14 February 2007
Digital Boundary File	92-168-XCF	CD-ROM	French	\$1,000	14 February 2007
Cartographic Boundary File	92-168-XCE	CD-ROM	English	\$1,000	14 February 2007
Cartographic Boundary File	92-168-XCF	CD-ROM	French	\$1,000	14 February 2007

Designated Place Boundary Files

The Designated Place Boundary Files portray the designated place boundaries for which 2006 Census data are disseminated. A designated place is normally a small community or settlement that does not meet the criteria established by Statistics Canada to be a census subdivision (an area with municipal status) or an urban area. Designated places are created by provinces and territories, in cooperation with Statistics Canada, to provide data for sub-municipal areas. The files contain the boundaries of all 1,289 designated places defined for the 2006 Census. The Designated Place Boundary Files are available as a standard package for Canada.

The Designated Place Boundary Files can be purchased on the Statistics Canada website (www.statcan.ca) at www.statcan.ca/bsolc/english/bsolc?catno=92-165-X.

Type of file	Catalogue no.	Medium	Language	Price	Release date
Digital Boundary File	92-165-XWE	Internet	English	\$110	13 March 2007
Digital Boundary File	92-165-XWF	Internet	French	\$110	13 March 2007
Cartographic Boundary File	92-165-XWE	Internet	English	\$110	13 March 2007
Cartographic Boundary File	92-165-XWF	Internet	French	\$110	13 March 2007
Digital Boundary File	92-165-XCE	CD-ROM	English	\$110	13 March 2007
Digital Boundary File	92-165-XCF	CD-ROM	French	\$110	13 March 2007
Cartographic Boundary File	92-165-XCE	CD-ROM	English	\$110	13 March 2007
Cartographic Boundary File	92-165-XCF	CD-ROM	French	\$110	13 March 2007

Urban Area Boundary Files

The Urban Area Boundary Files portray the urban area boundaries for which 2006 Census data are disseminated. An urban area has a minimum population concentration of 1,000 persons and a population density of at least 400 persons per square kilometre, based on the current census population count. The files contain the boundaries of all 895 urban areas defined for the 2006 Census. The Urban Area Boundary Files are available as a standard package for Canada.

The Urban Area Boundary Files can be purchased on the Statistics Canada website (www.statcan.ca) at www.statcan.ca/bsolc/english/bsolc?catno=92-164-X.

Type of file	Catalogue no.	Medium	Language	Price	Release date
Digital Boundary File	92-164-XWE	Internet	English	\$110	13 March 2007
Digital Boundary File	92-164-XWF	Internet	French	\$110	13 March 2007
Cartographic Boundary File	92-164-XWE	Internet	English	\$110	13 March 2007
Cartographic Boundary File	92-164-XWF	Internet	French	\$110	13 March 2007
Digital Boundary File	92-164-XCE	CD-ROM	English	\$110	13 March 2007
Digital Boundary File	92-164-XCF	CD-ROM	French	\$110	13 March 2007
Cartographic Boundary File	92-164-XCE	CD-ROM	English	\$110	13 March 2007
Cartographic Boundary File	92-164-XCF	CD-ROM	French	\$110	13 March 2007

Dissemination Area Boundary Files

The Dissemination Area Boundary Files portray the dissemination area boundaries for which 2006 Census data are disseminated. A dissemination area is a small area composed of one or more neighbouring blocks and is the smallest standard geographic area for which all census data are disseminated. The files contain the boundaries of all 54,626 dissemination areas which combined cover all of Canada. The Dissemination Area Boundary Files are available as a standard package for Canada.

The Dissemination Area Boundary Files can be purchased on the Statistics Canada website (www.statcan.ca) at www.statcan.ca/bsolc/english/bsolc?catno=92-169-X.

Type of file	Catalogue no.	Medium	Language	Price	Release date
Digital Boundary File	92-169-XWE	Internet	English	\$110 - \$10,900	14 February 2007
Digital Boundary File	92-169-XWF	Internet	French	\$110 - \$10,900	14 February 2007
Cartographic Boundary File	92-169-XWE	Internet	English	\$110 - \$10,900	14 February 2007
Cartographic Boundary File	92-169-XWF	Internet	French	\$110 - \$10,900	14 February 2007
Digital Boundary File	92-169-XCE	CD-ROM	English	\$110 - \$10,900	14 February 2007
Digital Boundary File	92-169-XCF	CD-ROM	French	\$110 - \$10,900	14 February 2007
Cartographic Boundary File	92-169-XCE	CD-ROM	English	\$110 - \$10,900	14 February 2007
Cartographic Boundary File	92-169-XCF	CD-ROM	French	\$110 - \$10,900	14 February 2007

Table 3.1 Prices for Dissemination area boundary files available for Canada, provinces and territories

Coverage	Prices for Dissemination area boundary files	Catalogue no.
Canada	\$10,900	92-169-XCE2006001
Newfoundland and Labrador	\$335	92-169-XCE2006002
Prince Edward Island	\$110	92-169-XCE2006003
Nova Scotia	\$335	92-169-XCE2006004
New Brunswick	\$335	92-169-XCE2006005
Quebec	\$2,565	92-169-XCE2006006
Ontario	\$3,900	92-169-XCE2006007
Manitoba	\$555	92-169-XCE2006008
Saskatchewan	\$665	92-169-XCE2006009
Alberta	\$1,170	92-169-XCE2006010
British Columbia	\$1,615	92-169-XCE2006011
Yukon Territory	\$110	92-169-XCE2006012
Northwest Territories	\$110	92-169-XCE2006013
Nunavut	\$110	92-169-XCE2006014

Dissemination Block Boundary Files

The Dissemination Block Boundary Files portray the dissemination block boundaries for which 2006 Census data are disseminated. A dissemination block is an area bounded on all sides by roads and/or boundaries of standard geographic areas and is the smallest geographic area for which population and dwelling count data are disseminated. The files contain the boundaries of all 478,831 dissemination blocks which combined cover all of Canada. The Dissemination Block Boundary Files are available as a standard package for Canada.

The Dissemination Block Boundary Files can be purchased on the Statistics Canada website (www.statcan.ca) at www.statcan.ca/bsolc/english/bsolc?catno=92-163-X.

Type of file	Catalogue no.	Medium	Language	Price	Release date
Digital Boundary File	92-163-XWE	Internet	English	\$120 - \$12,000	14 February 2007
Digital Boundary File	92-163-XWF	Internet	French	\$120 - \$12,000	14 February 2007
Cartographic Boundary File	92-163-XWE	Internet	English	\$120 - \$12,000	14 February 2007
Cartographic Boundary File	92-163-XWF	Internet	French	\$120 - \$12,000	14 February 2007
Digital Boundary File	92-163-XCE	CD-ROM	English	\$120 - \$12,000	14 February 2007
Digital Boundary File	92-163-XCF	CD-ROM	French	\$120 - \$12,000	14 February 2007
Cartographic Boundary File	92-163-XCE	CD-ROM	English	\$120 - \$12,000	14 February 2007
Cartographic Boundary File	92-163-XCF	CD-ROM	French	\$120 - \$12,000	14 February 2007

Table 3.2 Prices for Dissemination block boundary files available for Canada, provinces and territories

Coverage	Price of Dissemination block boundary files	Catalogue no.
Canada	\$12,000	92-163-XCE2006001
Newfoundland and Labrador	\$365	92-163-XCE2006002
Prince Edward Island	\$120	92-163-XCE2006003
Nova Scotia	\$365	92-163-XCE2006004
New Brunswick	\$365	92-163-XCE2006005
Quebec	\$2,820	92-163-XCE2006006
Ontario	\$4,290	92-163-XCE2006007
Manitoba	\$610	92-163-XCE2006008
Saskatchewan	\$735	92-163-XCE2006009
Alberta	\$1,285	92-163-XCE2006010
British Columbia	\$1,775	92-163-XCE2006011
Yukon Territory	\$120	92-163-XCE2006012
Northwest Territories	\$120	92-163-XCE2006013
Nunavut	\$120	92-163-XCE2006014

Census Forward Sortation Area Boundary File

The 2006 Census Forward Sortation Area Boundary File is available as a standard package for Canada. They depict forward sortation area boundaries used for 2006 Census dissemination, which are derived from postal codes captured from the 2006 Census questionnaires. Through analysis of the postal codes reported by census households, a single forward sortation area is assigned to each dissemination block (most often the forward sortation area reported by the largest number of census households). Forward sortation area polygons are formed by grouping dissemination blocks. Therefore, the census-based forward sortation area boundaries are not equivalent to forward sortation area boundaries in use by Canada Post, but are representations created from dissemination blocks.

The Census Forward Sortation Area Boundary File can be purchased on the Statistics Canada website (www.statcan.ca) at www.statcan.ca/bsolc/english/bsolc?catno=92-170-X.

Type of file	Catalogue no.	Medium	Language	Price	Release date
Digital Boundary File	92-170-XWE	Internet	English	\$445	12 July 2007
Digital Boundary File	92-170-XWF	Internet	French	\$445	12 July 2007
Cartographic Boundary File	92-170-XWE	Internet	English	\$445	12 July 2007
Cartographic Boundary File	92-170-XWF	Internet	French	\$445	12 July 2007
Digital Boundary File	92-170-XCE	CD-ROM	English	\$445	12 July 2007
Digital Boundary File	92-170-XCF	CD-ROM	French	\$445	12 July 2007
Cartographic Boundary File	92-170-XCE	CD-ROM	English	\$445	12 July 2007
Cartographic Boundary File	92-170-XCF	CD-ROM	French	\$445	12 July 2007

Population Ecumene Census Division Cartographic Boundary File

This file contains a generalised population ecumene based on census population density data with at least one ecumene polygon for every census division. It can be used to produce small-scale thematic maps of statistical data.

A reference guide is available for the Population Ecumene Census Division Cartographic Boundary File (Catalogue no. 92-159-GIE, GWE).

A working paper titled *The Population Ecumene of Canada: Exploring the Past and Present* (Catalogue no. 92F0138MWE2008003, 92F0138MIE2008003) is available in spring 2008.

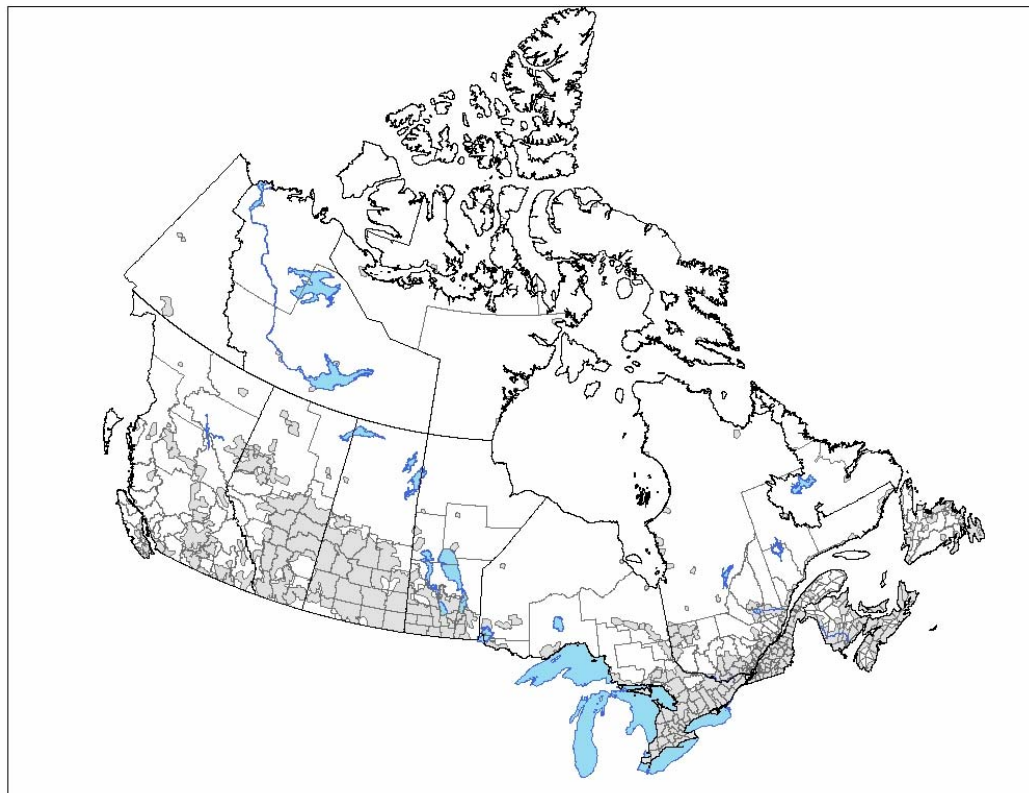
The Population Ecumene Census Division Cartographic Boundary File is available on the Statistics Canada website (www.statcan.ca) at www.statcan.ca/bsolc/english/bsolc?catno=92-159-X.

Coordinates: Latitude/longitude (NAD83)

Format: ArcInfo® (.SHP), Geography Markup Language (.GML) and MapInfo® (.TAB)

Catalogue no.	Medium	Language	Price	Release date
92-159-XWE	Internet	English	Free	13 March 2007
92-159-XWF	Internet	French	Free	13 March 2007

Figure 3.3 Population Ecumene Census Division Cartographic Boundary File, 2006 Census



Road Network File

The Road Network File is a digital representation of Canada's national road network, containing information such as street names, type, direction and address ranges. This unrestricted-use file is available as a free download.

User applications of this file may include mapping, geocoding, geographic searching, area delineation, and database maintenance as a source for street names and locations. Since statistical activities do not require absolute positional accuracy, relative positional accuracy takes precedence in the Road Network File. As a result, this file is not suitable for engineering applications, emergency dispatching services, surveying or legal applications.

A reference guide is included (Catalogue no. 92-500-GIE, GWE).

The Road Network File is available on the Statistics Canada website (www.statcan.ca) at www.statcan.ca/bsolc/english/bsolc?catno=92-500-X.

Coordinates: Latitude/longitude (NAD83)

Format: The Road Network File is available for Canada and individual provinces and territories in three formats: ArcInfo® (.SHP), Geography Markup Language (.GML) and MapInfo® (.TAB).

Catalogue no.	Medium	Language	Price	Release date
92-500-XWE2008001	Internet	English	Free	26 May 2008
92-500-XWF2008001	Internet	French	Free	26 May 2008
92-500-XWE2007001	Internet	English	Free	22 November 2007
92-500-XWF2007001	Internet	French	Free	22 November 2007

Road Network and Geographic Attribute File

The Road Network and Geographic Attribute File is a digital representation of Canada's national road network, containing information such as street name, type, direction, address range and road rank. Address ranges are largely dwelling-based and occur mainly in urban centres of Canada. Also included on each side of every road arc are identification names and codes for the following levels of geography:

- province/territory
- census subdivision
- census metropolitan area
- census agglomeration
- census tract.

Roads are ranked according to four levels of detail, suitable for mapping at small to medium scales. The Road Network and Geographic Attribute File provides cartographic reference features in the production of thematic maps using the 2006 Census Boundary Files. The positional accuracy of the Road Network and Geographic Attribute File does not support cadastral, surveying, digitizing or engineering applications.

The Road Network and Geographic Attribute File is in latitude/longitude coordinates based upon the North American Datum of 1983 (NAD83). A reference guide is available (Catalogue no. 92-155-GIE, GWE).

The Road Network and Geographic Attribute File can be purchased on the Statistics Canada website (www.statcan.ca) at www.statcan.ca/bsolc/english/bsolc?catno=92-155-X.

Coordinates: Latitude/longitude (NAD83)

Format: ArcInfo® (.SHP), Geography Markup Language (.GML) and MapInfo® (.TAB) (software not included)

Catalogue no.	Medium	Language	Price	Release date
92-155-XWE	Internet	English	\$110 - \$2,500	13 March 2007
92-155-XWF	Internet	French	\$110 - \$2,500	13 March 2007
92-155-XCE	CD-ROM	English	\$110 - \$2,500	13 March 2007
92-155-XCF	CD-ROM	French	\$110 - \$2,500	13 March 2007

Figure 3.4 Part of the Road Network and Geographic Attribute File, showing southern Alberta road ranks 1, 2 and 3 only

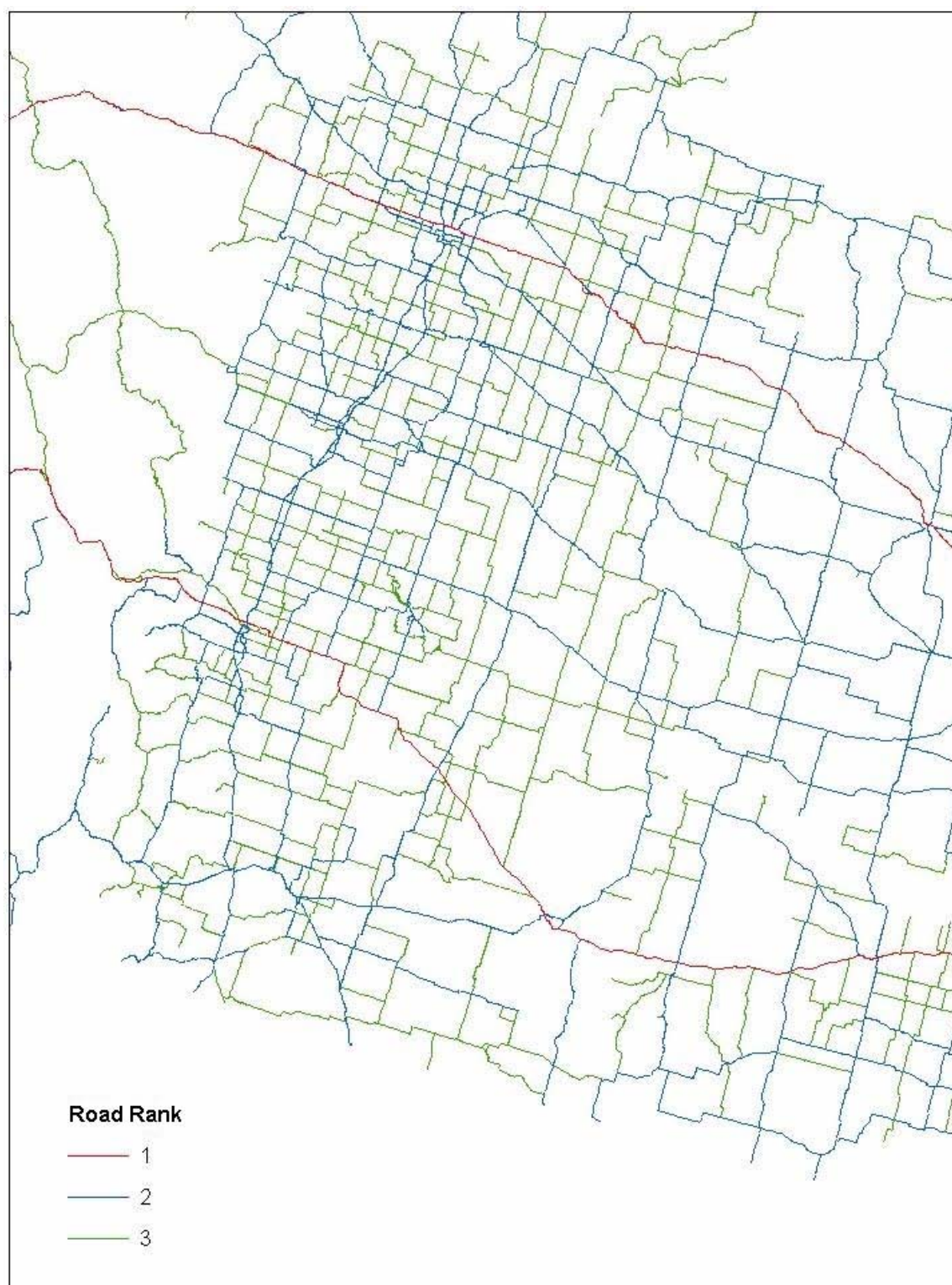


Table 3.3 Prices for Road Network and Geographic Attribute Files available for Canada, provinces and territories

Coverage	Prices for Road Network and Geographic Attribute Files	Catalogue no.
Canada	\$2,500	92-155-XCE2006001
Newfoundland and Labrador	\$110	92-155-XCE2006002
Prince Edward Island	\$110	92-155-XCE2006003
Nova Scotia	\$125	92-155-XCE2006004
New Brunswick	\$125	92-155-XCE2006005
Quebec	\$500	92-155-XCE2006006
Ontario	\$670	92-155-XCE2006007
Manitoba	\$165	92-155-XCE2006008
Saskatchewan	\$165	92-155-XCE2006009
Alberta	\$290	92-155-XCE2006010
British Columbia	\$290	92-155-XCE2006011
Yukon Territory	\$110	92-155-XCE2006012
Northwest Territories	\$110	92-155-XCE2006013
Nunavut	\$110	92-155-XCE2006014

4. Attribute information products

Attribute information products include the Postal Code Conversion File and the Postal Codes by Federal Ridings File.

What's new?

- The Postal Code Conversion File (PCCF) and the Postal Codes by Federal Ridings File (PCFRF) for the 2006 Census were released on October 19, 2007. Postal code products containing 2001 Census data will continue to be available; refer to the *2001 Geography Catalogue* for details (Catalogue no. 92-405-XIE, XWE).
- New record level metadata are included in the PCCF indicating the source, quality and type of linkage made between the postal code and the geographic area.
- A Postal Code working paper is now available (see Table 1.7, catalogue no. 92F0138MWE2007001, 92F0138MIE2007001).
- Attribute Information Products can be purchased through e-commerce on the Statistics Canada website (www.statcan.ca) at www12.statcan.ca/english/census06/geo/index.cfm.
- The Postal Codes by Federal Ridings File now includes the variable 'weight'. The 'weight' estimates the proportion of the population of a postal code that resides within each federal electoral district.

Postal Code Conversion File (PCCF)

The Postal Code Conversion File (PCCF) provides a link between the six-character postal code and standard 2006 Census geographic areas (such as dissemination areas, census subdivisions, census tracts). It also provides the x,y (latitude/longitude) coordinates for a geographic area point representing the approximate location of the postal code to support mapping.

The PCCF can be purchased as standard packages for Canada, the provinces and territories, census metropolitan areas and some census agglomerations at www.statcan.ca/bsolc/english/bsolc?catno=92-153-X on the Statistics Canada website (www.statcan.ca). A reference guide is included (Catalogue no. 92-153-GIE, GWE).

Coordinates: Latitude/longitude (NAD83)

Format: ASCII file

Catalogue no.	Medium	Language	Coverage	Price	Release date
92-153-XCB	CD-ROM	Bilingual	Canada	\$10,000	19 October 2007
92-153-XCB	CD-ROM	Bilingual	Provinces or territories	\$220 - \$3,955	19 October 2007
92-153-XCB	CD-ROM	Bilingual	Census metropolitan areas or census agglomerations	\$220 - \$1,615	19 October 2007

Price notes: For prices of individual provinces or territories and individual census metropolitan areas or census agglomerations, see Table 4.1.

Clients who purchase the PCCF at the initial price may purchase updates at a reduced flat rate or a subscription rate. For details, see Postal Code Conversion File – Update (Catalogue no. 92-153-UCB).

Postal Code Conversion File (PCCF) – Update

The Postal Code Conversion File (PCCF) is updated with new postal codes on a semi-annual basis. Clients must purchase the PCCF at the initial price; then subsequent updated files (Catalogue no. 92-153-UCB) may be purchased at the update or subscription rate. The update rate is a flat rate that in most cases is much lower than the initial purchase price. An additional 25% discount on updates is given to Postal Code Conversion File – Update subscribers. The subscription requires clients to pay in advance for at least one updated file per year until the PCCF reflecting the geography of the 2011 Census is released.

The Postal Code Conversion File – Updates can be purchased as standard packages for Canada and the provinces and territories at www.statcan.ca/bsolc/english/bsolc?catno=92-153-U on the Statistics Canada website (www.statcan.ca). A reference guide is included.

Coordinates: Latitude/longitude (NAD83)

Format: ASCII file

Catalogue no.	Medium	Language	Coverage	Single update price	Subscription update price	Release date
92-153-UCB	CD-ROM	Bilingual	Canada	\$1,670	\$1,250	30 January 2008
92-153-UCB	CD-ROM	Bilingual	Individual provinces and territories	\$110 - \$665	\$80 - \$500	30 January 2008

Price notes: For the single update price for individual provinces or territories and the subscription update price for individual provinces or territories, see Table 4.1.

Table 4.1 Summary of prices for 2006 Census Postal Code Conversion File, Postal Code Conversion File updates and Postal Code Conversion File subscription rates

Coverage	Postal Code Conversion File (92-153-XCB)	Postal Code Conversion File updates (92-153-UCB)	Postal Code Conversion File subscription rates
Minimum	\$220	\$110	\$80
Canada	\$10,000	\$1,670	\$1,250
Newfoundland and Labrador	\$220	\$110	\$80
St. John's (CMA)	\$220
Prince Edward Island	\$220	\$110	\$80
Nova Scotia	\$500	\$110	\$80
Halifax (CMA)	\$220
New Brunswick	\$390	\$110	\$80
Fredericton (CA)	\$220
Moncton (CMA)	\$220
Saint John (CMA)	\$220
Quebec	\$2,785	\$445	\$335
Montréal (CMA)	\$1,445
Québec (CMA)	\$555
Saguenay (CMA)	\$220
Saint-Jean-sur-Richelieu (CA)	\$220
Sherbrooke (CMA)	\$220
Trois-Rivières (CMA)	\$220
Ontario	\$3,955	\$665	\$500
Barrie (CMA)	\$220
Belleville (CA)	\$220
Brantford (CMA)	\$220
Greater Sudbury/Grand Sudbury (CMA)	\$220
Guelph (CMA)	\$220
Hamilton (CMA)	\$445
Kingston (CA)	\$220
Kitchener (CMA)	\$275
London (CMA)	\$275
North Bay (CA)	\$220
Oshawa (CMA)	\$220
Ottawa – Gatineau (CMA)	\$665
Peterborough (CMA)	\$220
Sarnia (CA)	\$220
Sault Ste. Marie (CA)	\$220
St. Catharines – Niagara (CMA)	\$335
Stratford (CA)	\$220
Thunder Bay (CMA)	\$220
Toronto (CMA)	\$1,615

Table 4.1 Summary of prices for 2006 Census Postal Code Conversion File, Postal Code Conversion File updates and Postal Code Conversion File subscription rates
(continued)

Coverage	Postal Code Conversion File (92-153-XCB)	Postal Code Conversion File updates (92-153-UCB)	Postal Code Conversion File subscription rates
Windsor (CMA)	\$220
Woodstock (CA)	\$220
Manitoba	\$555	\$110	\$80
Winnipeg (CMA)	\$445
Saskatchewan	\$555	\$110	\$80
Regina (CMA)	\$220
Saskatoon (CMA)	\$220
Alberta	\$1,225	\$220	\$165
Calgary (CMA)	\$555
Edmonton (CMA)	\$610
Lethbridge (CA)	\$275
Red Deer (CA)	\$220
British Columbia	\$1,835	\$305	\$220
Abbotsford (CA)	\$220
Kamloops (CA)	\$220
Kelowna (CMA)	\$220
Nanaimo (CA)	\$220
Prince George (CA)	\$220
Vancouver (CMA)	\$1,115
Victoria (CMA)	\$275
Yukon Territory	\$220	\$110	\$80
Northwest Territories	\$220	\$110	\$80
Nunavut	\$220	\$110	\$80

... not applicable

Note: Six CAs from the previous census became CMAs: Moncton, N.B., Barrie, Ont., Brantford, Ont., Guelph, Ont., Peterborough, Ont. and Kelowna, B.C.

Seven new CAs were created: Bay Roberts, N.L., Miramichi, N.B., Centre Wellington, Ont., Ingersoll, Ont., Okotoks, Alta., Canmore, Alta. and Salmon Arm, B.C.

Postal Codes by Federal Ridings (2003 Representation Order) File (PCFRF)

The Postal Codes by Federal Ridings File (PCFRF) provides a link between the six-character postal codes and the federal electoral districts (2003 Representation Order). A federal electoral district, commonly referred to as a federal riding, is an area represented by a Member of Parliament in the House of Commons.

The PCFRF is intended as a tool for use with administrative files containing postal codes. By using the postal code as a link, data from administrative files may be organised and/or tabulated by federal riding. This PCFRF links more than 800,000 postal codes to the 308 federal electoral districts.

The Postal Codes by Federal Ridings Files can be purchased as standard packages for Canada and five regions at www.statcan.ca/bsolc/english/bsolc?catno=92F0193X on the Statistics Canada website (www.statcan.ca). A reference guide is included (Catalogue no. 92F0193GIE, GWE).

Format: ASCII file

Catalogue no.	Medium	Language	Initial price	Release date
92F0193XCB	CD-ROM	Bilingual	\$2,500	4 March 2004

Price notes: See Table 4.2 for prices for the five regions. Clients who purchase the Postal Codes by Federal Ridings (2003 Representation Order) File at the initial price may purchase subsequent update files at the update rate. For details, see Postal Codes by Federal Ridings File (PCFRF) – Update (Catalogue no. 92F0193UCB).

Postal Codes by Federal Ridings (2003 Representation Order) File (PCFRF) – Update

The Postal Codes by Federal Ridings File (PCFRF) is updated with new postal codes on a semi-annual basis. Clients who purchase the PCFRF (catalogue no. 92F0193XCB) at the initial price may then purchase subsequent updated files (catalogue no. 92F0193UCB) at the update rate (see Table 4.2 for details).

The Postal Codes by Federal Ridings File Updates can be purchased as standard packages for Canada and five regions at www.statcan.ca/bsolc/english/bsolc?catno=92F0193U on the Statistics Canada website (www.statcan.ca).

Format: ASCII file

Catalogue no.	Medium	Language	Update price	Release date
92F0193UCB	CD-ROM	Bilingual	\$200 - \$500	30 January 2008

Table 4.2 Summary of prices for Postal Codes by Federal Ridings File and Postal Codes by Federal Ridings File updates, for Canada and regions

Coverage	Postal Codes by Federal Ridings File (92F0193XCB)	Postal Codes by Federal Ridings File updates (92F0193UCB)
Canada	\$2,500	\$500
Atlantic provinces	\$330	\$200
Quebec	\$695	\$200
Ontario	\$985	\$200
Prairie provinces and Northwest Territories	\$690	\$200
British Columbia and Yukon Territory	\$510	\$200

5. Geographic services

A variety of services are available, including custom mapping, custom data extraction (geocoding) and the development of custom geography products.

Custom Area Creation Service

The Custom Area Creation Service allows users to define their own geographic areas of study (user-defined areas or aggregations of standard census geographic areas) for census data tabulations. This custom geography is produced from the aggregation of dissemination blocks, or where necessary, block-faces within the road network file coverage. The custom area files are then used for data tabulation. Contact us through the National inquiries line at 1-800-263-1136, by e-mail at infostats@statcan.ca or visit www.statcan.ca/bsolc/english/bsolc?catno=97C0005 on the Statistics Canada website (www.statcan.ca).

Catalogue no.	Price	Availability
97C0005	The minimum cost for this service is \$128. Cost estimates will be provided based on client's specifications, and on the complexity of the request.	15 October 2007

Geography Custom Service

If standard geography products do not satisfy a client's needs, the Geography Custom Service is available to produce non-standard geographic products. For example, it is possible to produce a different set of geographic files, retrieve special data, as well as manipulate or merge any of the geography computer files (postal code files, boundary files, road network file, and road network and geographic attribute files). Contact us through the National inquiries line at 1-800-263-1136, by e-mail at infostats@statcan.ca or visit www.statcan.ca/bsolc/english/bsolc?catno=97C0006 on the Statistics Canada website (www.statcan.ca).

Catalogue no.	Price	Availability
97C0006	The minimum cost for this service is \$128. Cost estimates will be provided based on client's specifications, and on the complexity of the request.	13 March 2007

Geography Custom Mapping

Thematic maps and other maps, specially designed to meet customer needs, can be produced. Contact us through the National inquiries line at 1-800-263-1136, by e-mail at infostats@statcan.ca or visit www.statcan.ca/bsolc/english/bsolc?catno=97C0007 on the Statistics Canada website (www.statcan.ca).

Catalogue no.	Price	Availability
97C0007	The minimum cost for this service is \$128. Cost estimates will be provided based on client's specifications, and on the complexity of the request.	13 March 2007

Print-on-demand, reference maps

A print-on-demand service for reference maps is available. For more information please contact us through the National inquiries line at 1-800-263-1136, by e-mail at infostats@statcan.ca or visit www.statcan.ca/bsolc/english/bsolc?catno=97C0010 on the Statistics Canada website (www.statcan.ca).

Catalogue no.	Price	Availability
97C0010	The minimum cost for this service is \$128. Cost estimates will be provided based on client's specifications, and on the complexity of the request.	14 February 2007

6. Other Statistics Canada related geographic products and services

Agriculture products and services

The Agriculture Division provides Digital Products and Special Services.

Agricultural Ecumene of Canada, 2006

This boundary file delineates areas of significant agricultural activity in Canada as indicated by the 2006 Census of Agriculture. It is available at the Canada level, except for the territories, and is generalized for small-scale mapping. This agricultural ecumene enables users to thematically map data aggregated to the census division level and limits the data display to those areas where agricultural activity is concentrated in Canada. When used in dot and choropleth maps, the ecumene concept provides a more accurate depiction of the spatial distribution of data within standard geographic areas such as census divisions. Agricultural indicators including the ratios of total agricultural land to total land area, and total agricultural receipts to total land area were used in generating the agricultural ecumene.

Coverage: All Canada except Yukon Territory, Northwest Territories and Nunavut
Price: Free
Media: Internet
Release: 11 June 2008

Cartographic Boundary File for census agricultural regions (CARs)

This Cartographic Boundary File for Canada contains the boundaries of all 82 census agricultural regions delineated for the 2006 Census of Agriculture together with the shoreline around Canada and the larger inland lakes, all integrated in a single layer. The boundary file coordinates are latitude/longitude and are based on the North American Datum of 1983 (NAD83). The file is available in both ArcInfo® Interchange and MapInfo® Interchange formats and a reference guide is also provided.

Catalogue no. 92-174-XWE
Price: Free
Media: Internet
Release: 16 May 2007

Remote Sensing and Geospatial Analysis (RSGA) Section

RSGA provides a variety of products and services using the tools and methodologies of digital image analysis and geographic information systems. The RSGA section has evolved from a remote sensing research and development emphasis to a much broader program that includes operational agricultural and environmental applications and custom mapping, image analysis, and geomatics services.

RSGA offers remote sensing and geostatistical services on a fee-for-services basis. In addition to the custom mapping and image analysis capabilities, other applications could include:

- Estimation of crop and vegetation area, and crop yields by user-defined statistical units, such as risk areas, management districts
- Remote sensing/geographic information system integration and custom mapping
- Analysis and mapping of land-use classification and change monitoring
- Statistical sample frame construction for agriculture surveys
- Remote sensing consulting and training
- Spatial and statistical data integration

For further information on Agriculture Products and Services, please refer to *People, Products and Services - Agriculture Division, 2006* (Catalogue number 21F0003GPB, on the Internet 21F0003GIE).

Appendix A Glossary

Adjusted counts

'Adjusted counts' refer to previous census population and dwelling counts that were adjusted (i.e., recompiled) to reflect current census boundaries, when a boundary change occurs between the two censuses.

Block-face

A block-face is one side of a street between two consecutive features intersecting that street. The features can be other streets or boundaries of standard geographic areas.

Block-faces are used for generating block-face representative points, which in turn are used for geocoding and census data extraction when the street and address information are available.

Cartographic boundary files

Cartographic boundary files (CBFs) contain the boundaries of standard geographic areas together with the shoreline around Canada. Selected inland lakes and rivers are available as a supplementary layer.

Census agricultural region

Census agricultural regions (CARs) are composed of groups of adjacent census divisions. In Saskatchewan, census agricultural regions are made up of groups of adjacent census consolidated subdivisions, but these groups do not necessarily respect census division boundaries.

Census consolidated subdivision

A census consolidated subdivision (CCS) is a group of adjacent census subdivisions. Generally, the smaller, more urban census subdivisions (towns, villages, etc.) are combined with the surrounding, larger, more rural census subdivision, in order to create a geographic level between the census subdivision and the census division.

Census division

Census division (CD) is the general term for provincially legislated areas (such as county, *municipalité régionale de comté* and regional district) or their equivalents. Census divisions are intermediate geographic areas between the province/territory level and the municipality (census subdivision).

Census metropolitan area and census agglomeration

A census metropolitan area (CMA) or a census agglomeration (CA) is formed by one or more adjacent municipalities centred on a large urban area (known as the urban core). A CMA must have a total population of at least 100,000 of which 50,000 or more must live in the urban core.

A CA must have an urban core population of at least 10,000. To be included in the CMA or CA, other adjacent municipalities must have a high degree of integration with the central urban area, as measured by commuting flows derived from census place of work data.

If the population of the urban core of a CA declines below 10,000, the CA is retired. However, once an area becomes a CMA, it is retained as a CMA even if its total population declines below 100,000 or the population of its urban core falls below 50,000. The urban areas in the CMA or CA that are not contiguous to the urban core are called the urban fringe. Rural areas in the CMA or CA are called the rural fringe.

When a CA has an urban core of at least 50,000, it is subdivided into census tracts. Census tracts are maintained for the CA even if the population of the urban core subsequently falls below 50,000. All CMAs are subdivided into census tracts.

Census metropolitan area and census agglomeration influenced zone

The census metropolitan area and census agglomeration influenced zone (MIZ) is a concept that geographically differentiates the area of Canada outside census metropolitan areas (CMAs) and census agglomerations (CAs). Census subdivisions outside CMAs and CAs are assigned to one of four categories according to the degree of influence (strong, moderate, weak or no influence) that the CMAs and/or CAs have on them.

Census subdivisions (CSDs) are assigned to a MIZ category based on the percentage of their resident employed labour force that has a place of work in the urban core(s) of CMAs or CAs. CSDs with the same degree of influence tend to be clustered. They form zones around CMAs and CAs that progress through the categories from 'strong' to 'no' influence as distance from the CMAs and CAs increases.

Census subdivision

Census subdivision (CSD) is the general term for municipalities (as determined by provincial/territorial legislation) or areas treated as municipal equivalents for statistical purposes (e.g., Indian reserves, Indian settlements and unorganized territories).

Census tract

Census tracts (CTs) are small, relatively stable geographic areas that usually have a population of 2,500 to 8,000. They are located in census metropolitan areas and in census agglomerations with an urban core population of 50,000 or more in the previous census.

A committee of local specialists (for example, planners, health and social workers, and educators) initially delineates census tracts in conjunction with Statistics Canada. Once a census metropolitan area (CMA) or census agglomeration (CA) has been subdivided into census tracts, the census tracts are maintained even if the urban core population subsequently declines below 50,000.

Coordinate system

A coordinate system is a reference system based on mathematical rules for specifying positions (locations) on the surface of the earth. The coordinate values can be spherical (latitude and longitude) or planar (such as Universal Transverse Mercator).

Cartographic boundary files, digital boundary files, representative points and road network files are disseminated in latitude/longitude coordinates.

Datum

A datum is a geodetic reference system that specifies the size and shape of the earth, and the base point from which the latitude and longitude of all other points on the earth's surface are referenced.

Designated place

A designated place (DPL) is normally a small community or settlement that does not meet the criteria established by Statistics Canada to be a census subdivision (an area with municipal status) or an urban area.

Designated places are created by provinces and territories, in cooperation with Statistics Canada, to provide data for submunicipal areas.

Digital boundary files

Digital boundary files (DBFs) portray the boundaries used for 2006 Census collection and, therefore, often extend as straight lines into bodies of water.

Dissemination area

A dissemination area (DA) is a small, relatively stable geographic unit composed of one or more adjacent dissemination blocks. It is the smallest standard geographic area for which all census data are disseminated. DAs cover all the territory of Canada.

Dissemination block

A dissemination block (DB) is an area bounded on all sides by roads and/or boundaries of standard geographic areas. The dissemination block is the smallest geographic area for which population and dwelling counts are disseminated. Dissemination blocks cover all the territory of Canada.

Economic region

An economic region (ER) is a grouping of complete census divisions (CDs) (with one exception in Ontario) created as a standard geographic unit for analysis of regional economic activity.

Ecumene

Ecumene is a term used by geographers to mean inhabited land. It generally refers to land where people have made their permanent home, and to all work areas that are considered occupied and used for agricultural or any other economic purpose. Thus, there can be various types of ecumenes, each having their own unique characteristics (population ecumene, agricultural ecumene, industrial ecumene, etc.).

Federal electoral district

A federal electoral district (FED) is an area represented by a member of the House of Commons. The federal electoral district boundaries used for the 2006 Census are based on the 2003 Representation Order.

Geocoding

Geocoding is the process of assigning geographic identifiers (codes) to map features and data records. The resulting geocodes permit data to be linked geographically.

Households, postal codes and place of work data are linked to block-face representative points when the street and address information is available; otherwise, they are linked to dissemination block (DB) representative points. In some cases, postal codes and place of work data are linked to dissemination area (DA) representative points when they cannot be linked to DBs. As well, place of work data are linked to census subdivision representative points when the data cannot be linked to DAs.

Geographic code

A geographic code is a numerical identifier assigned to a geographic area. The code is used to identify and access standard geographic areas for the purposes of data storage, retrieval and display.

Geographic reference date

The geographic reference date is a date determined by Statistics Canada for the purpose of finalizing the geographic framework for which census data will be collected, tabulated and reported. For the 2006 Census, the geographic reference date is January 1, 2006.

Land area

Land area is the area in square kilometres of the land-based portions of standard geographic areas.

Land area data are unofficial, and are provided for the sole purpose of calculating population density.

Locality

'Locality' (LOC) refers to the historical place names of former census subdivisions (municipalities), former designated places and former urban areas, as well as to the names of other entities, such as neighbourhoods, post offices, communities and unincorporated places.

Map projection

A map projection is the process of transforming and representing positions from the earth's three-dimensional curved surface to a two-dimensional (flat) surface. The process is accomplished by a direct geometric projection or by a mathematically derived transformation.

The Lambert conformal conic map projection is widely used for general maps of Canada at small scales and is the most common map projection used at Statistics Canada.

National Geographic Database

The National Geographic Database (NGD) is a shared database between Statistics Canada and Elections Canada. The database contains roads, road names and address ranges. It also includes separate reference layers containing physical and cultural features, such as hydrography and hydrographic names, railroads and power transmission lines.

The NGD was created in 1997 as a joint Statistics Canada/Elections Canada initiative to develop and maintain a national road network file serving the needs of both organizations. The active building of the NGD – that is, integrating the files from Statistics Canada, Elections Canada and Natural Resources Canada – occurred from 1998 to 2000. Thereafter, Statistics Canada and Elections Canada reconciled their digital boundary holdings to the new database's road network geometry so that operational products could be derived.

Since 2001, the focus of the NGD has been on intensive data quality improvements, especially regarding the quality and currency of its road network coverage. There has been considerable expansion of road names and civic addresses ranges, as well as the addition of hydrographic names. Priorities were determined by Statistics Canada and Elections Canada, enabling the NGD to meet the joint operational needs of both agencies in support of census and electoral activities.

Place name

'Place name' refers to the set of names that includes current census subdivisions (municipalities), current designated places and current urban areas, as well as the names of localities.

Population density

Population density is the number of persons per square kilometre.

Postal code

The postal code is a six-character code defined and maintained by Canada Post Corporation for the purpose of sorting and delivering mail.

Province or territory

Province and territory refer to the major political units of Canada. From a statistical point of view, province and territory are basic areas for which data are tabulated. Canada is divided into 10 provinces and three territories.

Reference map

A reference map shows the location of the geographic areas for which census data are tabulated and disseminated. The maps display the boundaries, names and codes of standard geographic areas, as well as major cultural and physical features, such as roads, railroads, coastlines, rivers and lakes.

Representative point

A representative point is a point that represents a line or a polygon. The point is centrally located along the line, and centrally located or population weighted in the polygon.

Representative points are generated for block-faces, dissemination blocks, dissemination areas, census subdivisions, urban areas and designated places.

Households, postal codes and place of work data are linked to block-face representative points when the street and address information is available; otherwise, they are linked to dissemination block (DB) representative points. In some cases, postal codes and place of work data are linked to dissemination area (DA) representative points when they cannot be linked to DBs. As well, place of work data are linked to census subdivision representative points when the data cannot be linked to DAs.

Road network file

The road network file (RNF) contains roads, road names, address ranges and road ranks for the entire country. Most commonly, address ranges are dwelling-based and are mainly available in the large urban centres of Canada.

Rural area

Rural areas include all territory lying outside urban areas. Taken together, urban and rural areas cover all of Canada.

Rural population includes all population living in the rural fringes of census metropolitan areas (CMAs) and census agglomerations (CAs), as well as population living in rural areas outside CMAs and CAs.

Spatial Data Infrastructure

The Spatial Data Infrastructure (SDI), formerly known as the National Geographic Base (NGB), is an internal, maintenance database that is not disseminated outside of Statistics Canada. It contains roads, road names and address ranges from the National Geographic Database (NGD), as well as boundary arcs of standard geographic areas that do not follow roads, all in one integrated line layer. The database also includes a related polygon layer consisting of basic blocks (BB) (basic blocks are the smallest polygon units in the database, and are formed by the intersection of all roads and the arcs of geographic areas that do not follow roads), boundary layers of standard geographic areas, and derived attribute tables, as well as reference layers containing physical and cultural features (such as hydrography, railroads and power transmission lines) from the NGD.

The SDI supports a wide range of census operations, such as the maintenance and delineation of the boundaries of standard geographic areas (including the automated delineation of dissemination blocks, dissemination areas and urban areas), and geocoding. The SDI is also the source for generating many geography products for the 2006 Census, such as cartographic boundary files and road network files.

Spatial data quality elements

Spatial data quality elements provide information on the fitness for use of a spatial database by describing why, when and how the data are created, and how accurate the data are. The elements include an overview describing the purpose and usage, as well as specific quality elements reporting on the lineage, positional accuracy, attribute accuracy, logical consistency and completeness. This information is provided to users for all spatial data products disseminated for the census.

Standard Geographical Classification

The Standard Geographical Classification (SGC) is Statistics Canada's official classification for three types of geographic areas: provinces and territories, census divisions (CDs) and census subdivisions (CSDs). The SGC provides unique numeric identification (codes) for these hierarchically related geographic areas.

Statistical Area Classification

The Statistical Area Classification (SAC) groups census subdivisions according to whether they are a component of a census metropolitan area, a census agglomeration, a census metropolitan area and census agglomeration influenced zone (strong MIZ, moderate MIZ, weak MIZ or no MIZ), or the territories (Yukon Territory, Northwest Territories and Nunavut). The SAC is used for data dissemination purposes.

Thematic map

A thematic map shows the spatial distribution of one or more specific data themes for standard geographic areas. The map may be qualitative in nature (e.g., predominant farm types) or quantitative (e.g., percentage population change).

Urban area

An urban area has a minimum population concentration of 1,000 persons and a population density of at least 400 persons per square kilometre, based on the current census population count. All territory outside urban areas is classified as rural. Taken together, urban and rural areas cover all of Canada.

Urban population includes all population living in the urban cores, secondary urban cores and urban fringes of census metropolitan areas (CMAs) and census agglomerations (CAs), as well as the population living in urban areas outside CMAs and CAs.

Urban core, urban fringe and rural fringe

'Urban core, urban fringe and rural fringe' distinguish between central and peripheral urban and rural areas within a census metropolitan area (CMA) or census agglomeration (CA).

'Urban core' is a large urban area around which a CMA or a CA is delineated. The urban core must have a population (based on the previous census) of at least 50,000 persons in the case of a CMA, or at least 10,000 persons in the case of a CA.

The urban core of a CA that has been merged with an adjacent CMA or larger CA is called the 'secondary urban core'.

'Urban fringe' includes all small urban areas within a CMA or CA that are not contiguous with the urban core of the CMA or CA.

'Rural fringe' is all territory within a CMA or CA not classified as an urban core or an urban fringe.

Urban population size group

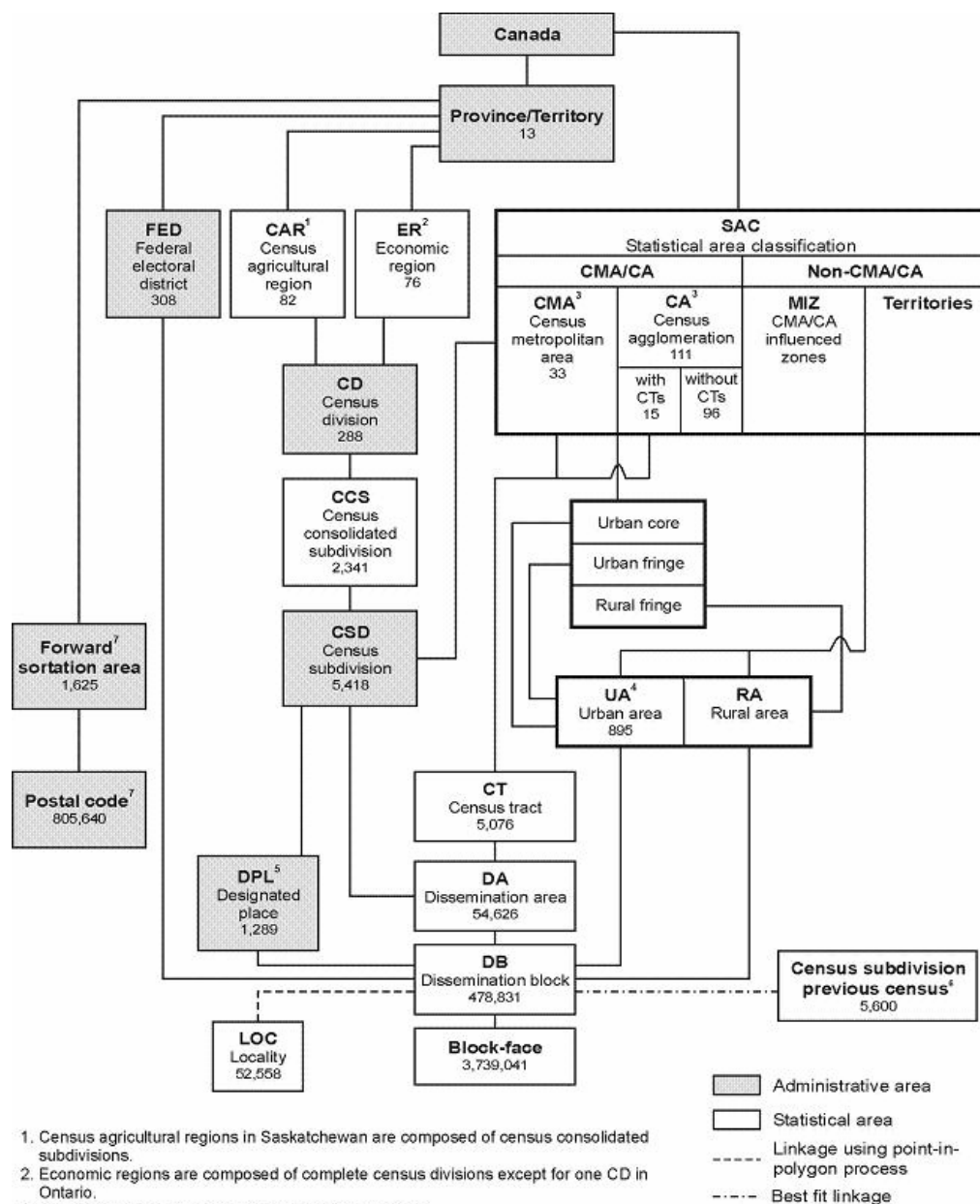
The term 'urban population size group' refers to the classification used in standard tabulations where urban areas are distributed according to the following predetermined size groups, based on the current census population.

1,000	to	2,499
2,500	to	4,999
5,000	to	9,999
10,000	to	24,999
25,000	to	49,999
50,000	to	99,999
100,000	to	499,999
500,000	and over	

Tabulations are not limited to these predetermined population size groups; the census database has the capability of tabulating data according to any user-defined population size group.

Appendix B Hierarchy of standard geographic units for dissemination, 2006 Census

Figure B.1 Hierarchy of standard geographic units for dissemination, 2006 Census



1. Census agricultural regions in Saskatchewan are composed of census consolidated subdivisions.
2. Economic regions are composed of complete census divisions except for one CD in Ontario.
3. One CMA and three CAs cross provincial boundaries.
4. Five UAs cross provincial boundaries.
5. Designated places respect CSD boundaries, but do not cover the total area of CSDs.
6. For the 2006 Census, a best fit linkage is created between the 2001 CSDs and 2006 DBs to facilitate historical data retrieval.
7. Postal codes and forward sortation areas valid as of May 2006 (Canada Post Corporation).

Sources: Statistics Canada, 2006 Census of Population; Canada Post Corporation, May 2006.

Appendix C Geographic units by province and territory, 2006 Census

Table C.1 Geographic units by province and territory, 2006 Census

Geographic unit	Canada 2001	Canada 2006	N.L.	P.E.I.	N.S.	N.B.	Que.	Ont.	Man.	Sask.	Alta.	B.C.	Y.T.	N.W.T.	Nvt.
Federal electoral district (2003 Representation Order)	301 ¹	308	7	4	11	10	75	106	14	14	28	36	1	1	1
Economic region	76	76	4	1	5	5	17	11	8	6	8	8	1	1	1
Census agricultural region	82	82	3	3	5	4	14	5	12	20	8	8	0	0	0
Census division	288	288	11	3	18	15	98	49	23	18	19	28	1	2	3
Census consolidated subdivision	2,446	2,341	89	68	43	151	1,008	316	127	300	77	156	1	2	3
Census subdivision (CSD)	5,600	5,418	377	113	100	276	1,294	585	297	984	453	836	35	37	31
CSD dissolutions (January 2, 2001 to January 1, 2006)	340	...	9	0	0	0	282	5	7	29	4	4	0	0	0
CSD incorporations (January 2, 2001 to January 1, 2006)	...	158	5	0	2	1	100	4	6	11	5	24	0	0	0
Designated place	1,261	1,289	182	0	49	167	83	88	58	159	262	240	1	0	0
Census metropolitan area	27	33	1	0	1	2	6 ²	15 ²	1	2	2	4	0	0	0
Census agglomeration (CA)	113	111	3	2	4	5 ²	26 ²	28 ²	3	7 ²	12 ²	22	1	1	0
CA with census tracts	16	15	0	0	0	1	3	4	0	0	3	4	0	0	0
CA without census tracts	94	96	3	2	4	4 ²	23 ²	24 ²	3	7 ²	9 ²	18	1	1	0
Census tract	4,798	5,076	46	0	88	99	1,289	2,136	168	105	491	654	0	0	0
Urban area	913	895	32	7	36	32 ²	226 ²	260 ²	38 ²	58 ²	107 ²	95	1	3	5
Locality	52,291	52,558	2,445	964	3,924	3,450	12,617	10,905	2,349	3,898	3,472	7,708	363	173	290
Dissemination area	52,993	54,626	1,062	292	1,633	1,439	13,408	19,177	2,152	2,431	5,357	7,471	78	84	42
Dissemination block	478,707	478,831	8,199	3,251	14,656	14,864	108,751	126,244	30,421	51,729	65,071	52,808	1,261	967	609
Block-face	3,764,232	3,739,041	78,376	26,190	154,564	132,873	835,458	942,567	198,063	361,069	507,859	473,418	11,888	11,620	5,096
Forward sortation area	1,595	1,625	35	7	76	110	415	522	64	48	150	189	3	3	3
Postal code	758,658	805,640	10,378	3,157	25,313	57,355	202,972	269,676	23,943	21,541	76,924	112,904	942	506	29

... not applicable

1. Federal electoral districts (1996 Representation Order).

2. Census metropolitan areas, census agglomerations and urban areas crossing provincial boundaries are counted in both provinces, and, therefore, do not add up to the national total.

Sources: Statistics Canada, 2006 Census of Population; Canada Post Corporation, May 2006.

Example of end-use licence agreement for Statistics Canada's for fee products

End-use licence agreement for Statistics Canada's *insert product name here*, 2006 Census

Copyright

The Government of Canada (Statistics Canada) is the owner or a licensee of all intellectual property rights (including copyright) in this data product. With your payment of the requisite fee, you (hereinafter referred to as 'the Licensee') are granted a non-exclusive, non-assignable and non-transferable licence to use this data product subject to the terms below. This licence is not a sale of any or all of the rights of the owner(s).

Terms of use

1. All copyright and proprietary notices, as well as all conditions of use associated with the data product, must be communicated to all users of the data product.
2. The Licensee shall not transfer this data product to, or store the data product in, any electronic network for use by more than three (3) regular users unless the Licensee obtains prior written permission from Statistics Canada and pays any additional fees.
3. The Licensee shall not lend, rent, lease, sublicense, transfer or sell any part of the data product nor any right granted under this agreement to any person outside the licensed organization or to any other organization.
4. The Licensee shall not disassemble, decompile or in any way attempt to reverse engineer any software provided as part of the data product.
5. The Licensee shall not use any part of the data product to develop or derive any other data product or data service for external distribution or commercial sale.
6. The Licensee is granted reasonable rights of use of the content of this data product only for personal, corporate or public policy research, as well as for educational purposes. This permission includes the use of the content in analyses and in the reporting of results and conclusions, including the citation of limited amounts of supporting data, extracted from the data product, in such documents. In such cases, the source of the data must be acknowledged in all such documents and communications by providing the following source citation at the bottom of each table and graph:

Source (or 'Adapted from,' if appropriate): ***Division name***, Statistics Canada, ***product name***, ***catalogue number***, 2006 Census.

7. The Licensee shall obtain approval from Statistics Canada before publishing any significant volume of material, in any medium, that is extracted from the data product.
8. The Licensee agrees not to merge or link the data product with any other databases in such a fashion that gives the appearance that the Licensee may have received, or had access to, information held by Statistics Canada about any identifiable individual, family, household, organization or business.

9. Any violation of this licence renders it void and of no effect. This agreement will terminate automatically without notice if the Licensee fails to comply with any of the terms of this agreement. In the event of termination, the Licensee must immediately return the data product to Statistics Canada or destroy it and certify this destruction in writing to Statistics Canada.

Warranties and disclaimers

This data product is provided 'as-is,' and Statistics Canada makes no warranty, either express or implied, including but not limited to, warranties of merchantability and fitness for a particular purpose. In no event will Statistics Canada be liable for any direct, special, indirect, consequential or other damages, however caused.

Acceptance of terms

It is **your responsibility** to ensure that your use of this data product complies with these terms and to seek prior written permission from Statistics Canada for any uses not permitted or not specified in this agreement. Any infringement of Statistics Canada's rights may result in legal action.

Any use whatsoever of this data product shall constitute your acceptance of the terms of this agreement. Any violation of these terms may result in termination of this licence.

For further information please contact:

Licensing Services
Client Services Division, Statistics Canada
9th Floor, R.H. Coats Building
Ottawa, Ontario K1A 0T6
Canada
E-mail: licensing@statcan.ca
Telephone: 613-951-1122
Fax: 613-951-1134

© Statistics Canada, 2008

Example of unrestricted use licence agreement for free Statistics Canada products

Unrestricted use licence agreement for Statistics Canada's free *insert product name here*, 2006 Census

This is a legal agreement between you, hereinafter referred to as the "Licensee," and Her Majesty the Queen in Right of Canada (Canada) as represented by the Minister of Industry (Statistics Canada), hereinafter referred to as the "Licensor." BY ACCESSING, DOWNLOADING, PRINTING OR USING THE DATA, INFORMATION AND MATERIALS BEING PROVIDED WITH, OR ACCESSIBLE PURSUANT TO THIS AGREEMENT, YOU ARE AGREEING TO BE BOUND BY THE TERMS OF THIS AGREEMENT. IF YOU DO NOT AGREE TO THE TERMS OF THIS AGREEMENT, YOU MUST IMMEDIATELY DISPOSE OF ANY SUCH DATA, INFORMATION, MATERIALS AND ANY DERIVED PRODUCTS.

- I WHEREAS the Licensor is the owner or licensee of intellectual property rights in and to digital data contained in the database known as Statistics Canada's free *insert product name here*, 2006 Census;
- II AND WHEREAS the Licensee wishes to obtain certain rights to the Data, in accordance with the terms and conditions herein contained;
- III AND WHEREAS the Licensor wishes to grant to the Licensee certain rights to the Data, in accordance with the terms and conditions herein contained;
- IV AND WHEREAS the Licensor represents that it has full authority to grant the rights desired by the Licensee on the terms and conditions herein contained;
- V AND WHEREAS the parties hereto are desirous of entering into a licence agreement on the basis herein set forth,
NOW THEREFORE, in consideration of the covenants contained in this Agreement, the parties agree as follows:

1.0 Definitions

- 1.1 "Agreement" means this Unrestricted Use Licence Agreement and all schedules annexed to this agreement, as the same may be amended from time to time in accordance with the provisions hereof.
- 1.2 "Data" means any original and fixed digital data (i.e. that is transmitted electronically), metadata, software or documentation licensed pursuant to the terms and conditions of this Agreement.
- 1.3 "Derived Products" means any product or service created from, or made functional through, the use of all or part of the Data.
- 1.4 "Intellectual Property Rights" means any and all intellectual property rights recognized by the law, including any intellectual property right protected through legislation.
- 1.5 "Licensor's Data" means that Data, the Intellectual Property Rights of which vest with the Licensor
- 1.6 "Licensor's Licensed Rights" means those rights conferred upon the Licensor by third parties over the use of Data which is not the Licensor's Data.

- 1.7 “Modifications” means any modification, enhancement, translation, update or upgrade of all or any part of the Data, in any medium.

2.0 Intellectual property rights

- 2.1 All title and Intellectual Property Rights in and to the Licensor’s Data shall at all times remain the property of the Licensor. All title and Intellectual Property Rights in and to the Data that is not the Licensor’s Data are the property of the respective content owners and may be protected by copyright, other intellectual property laws, common law or international treaties.

3.0 Licence grant

- 3.1 Subject to this Agreement, the Licensor hereby grants to the Licensee a non-exclusive, world-wide, non-assignable, royalty-free right and licence to exercise such of the Licensor’s Licensed Rights and such of the Licensor’s Intellectual Property Rights in the Data as is necessary to use, reproduce, extract, modify, translate, further develop, distribute the Data, manufacture or cause to be manufactured and sell or license or cause to be sold or licensed Derived Products, and to sub-licence any or all of such rights, PROVIDED:
- (i) all reproductions of the Data shall carry the notices and metadata information set out in section 4 hereof and the provisions contained in sections 5, to be amended in such circumstances by replacing the term “Licensor” as found in the aforementioned provisions with the Licensor’s applied title or any such designation as the Licensor may indicate; and
 - (ii) all distribution of the Data or licensing by the Licensee of Derived Products containing the Data, and any sub-licence by the Licensee of its rights hereunder, shall be evidenced in writing, shall be on the same terms and conditions as contained herein and shall specifically include the provisions contained in sections 4, 5 and 6.2 hereof, to be amended in the circumstances by replacing in such agreements the term “Licensor” as found in the aforementioned provisions with the Licensor’s applied title or any such designation as the Licensor may indicate.
- 3.2 The Intellectual Property Rights arising from any Modifications or from the manufacture of Derived Products, effected by or for the Licensee, shall vest in the Licensee or in such person as the Licensee shall decide.

4.0 Acknowledgement of source and incorporation of metadata

- 4.1 The Licensee shall include the following notice where any of the Data is contained within Derived Products,
Source: Division name, Statistics Canada, product name, catalogue number
The incorporation of data sourced from Statistics Canada within this product shall not be construed as constituting an endorsement by Statistics Canada of such product
 or any other notice deemed appropriate by the Licensor.
- 4.2 The Licensee shall reproduce, include and maintain the following notice on all reproductions of the Licensor’s Data produced pursuant to Section 3 above:
- Reproduced with the permission of Statistics Canada
- 4.3 The Licensee shall incorporate in all reproduction and downstream distribution of the Data all metadata included by the Licensor in the provision of the Data.

5.0 Representations, warranties, indemnities

- 5.1 The Licensor makes no representation or warranty of any kind with respect to the accuracy, usefulness, novelty, validity, scope, completeness or currency of the Data, at any time and from time to time, and expressly disclaims any implied warranty of merchantability or fitness for a particular purpose of the Data. The Licensor does not ensure or warrant compatibility with past, current or future versions of computer software to access the Data.
- 5.2 The Licensee acknowledges having received notice of the disclaimer set out above and accepts the Data on an "as is" basis, without representations or warranties of any kind. No oral or written information or advice given by the Licensor, at any time or from time to time, shall create or evidence, or be deemed to create or evidence, a contractual representation, warranty or guarantee of any kind.
- 5.3 The Licensee shall have no recourse against the Licensor, its officers, directors, employees, authorized agents and contractors, whether by way of any suit or action or other, for any loss, liability, damage or cost that the Licensee may suffer or incur at any time, by reason of the Licensee's possession or use of the Data or arising out of the exercise by the Licensee of its rights hereunder.
- 5.4 The Licensee shall indemnify the Licensor, its officers, directors, employees, authorized agents and contractors from all claims whatsoever alleging loss, costs, expenses, damages or injuries (including injuries resulting in death) arising out of the Licensee's possession or use of the Data or the exercise by the Licensee of its rights hereunder.
- 5.5 The Licensee's obligation to indemnify the Licensor, its officers, directors, employees, authorized agents and contractors, under this Agreement shall not affect or prejudice the Licensor from exercising any other rights under law.
- 5.6 The provisions of this Article shall survive termination of this Agreement.

6.0 Termination

- 6.1 This Agreement may be terminated
- (i) automatically and without notice, if the Licensee commits or permits a breach of any of its covenants or obligations under this Agreement;
 - (ii) upon written notice of termination by the Licensee at any time, and such termination shall take effect thirty (30) days after the receipt by the Licensor of such notice; or
 - (iii) upon mutual agreement of the parties.
- 6.2 Upon termination of this Agreement, for whatever reason, the Licensee's rights under section 3 shall immediately cease; and all obligations of the Parties which expressly or by their nature survive termination shall continue in full force and effect subsequent to and notwithstanding such termination, until they are fully satisfied or by their nature expire. For greater clarity, but without restricting the generality of the foregoing, the following provisions survive termination of this Agreement:
- section 5 (representations, warranties, indemnities)
- 6.3 Notwithstanding subsections 6.1 and 6.2 above, the Licensee may continue to use the Data for the purpose of completing orders of Derived Products made before the termination date of this Agreement

- 6.4 Notwithstanding the termination of this Agreement, all agreements entered into by the Licensee in the exercise of its rights under section 3 thereof prior to such termination and all obligations imposed therein shall continue in full force and effect subject to their terms.

7.0 Generalities

7.1 Applicable Law

This Agreement shall be construed and enforced in accordance with, and the rights of the parties shall be governed by, the laws of Ontario and Canada, as applicable.

7.2 Entirety of Agreement

This Agreement hereto constitute the entire agreement between the parties with respect to its subject matter. This Agreement may only be amended in writing, signed by both parties, which expressly states the intention to amend this Agreement.

7.3 Alternate Dispute Resolution

If a dispute arises concerning this Agreement, or if a proposed modification of any term of this Agreement cannot be agreed between the parties, the parties shall attempt to resolve the matter first by negotiation.

If the parties have not succeeded in negotiating a resolution, then they shall jointly submit the dispute to a mutually accepted mediator. If the parties cannot agree on an acceptable mediator, then either party may submit the dispute to binding arbitration.

The arbitral tribunal shall be governed by the UN Commercial Arbitration Code (the "Code"), referred to in the Commercial Arbitration Act, R.S.C 1985, c. C-4.6, and judgment upon the award rendered by the arbitral tribunal may be entered in any court having jurisdiction over the matter.

The arbitral tribunal shall consist of one arbitrator chosen by the parties.

Subject to the Code, the parties agree that the award and determination of the arbitral tribunal shall be final and binding on both parties, shall be without right of appeal and shall be the exclusive remedy between the parties regarding any claims, counterclaims, issues or disputes presented to the arbitral tribunal.

Costs

The Parties shall bear the costs of the mediation equally, except that each party shall bear its own personal costs of the mediation.

The costs of the arbitral tribunal's fees and expenses shall be shared equally by the parties. The parties shall bear their own personal costs except that the losing party shall pay all costs, fees, levies and taxes arising from and necessitated by the enforcement of the arbitral tribunal's award, including, without limitation, registration, enforcement charges or other judicial levies or costs.

7.4 No Joint Venture

The Parties expressly disclaim any intention to create a partnership, joint venture or joint enterprise. The Parties acknowledge and agree that nothing contained in this Agreement nor any acts of any party shall constitute or be deemed to constitute the parties as partners, joint ventures or principal and agent in any way or for any purpose. No Party has the authority to act for, or to assume any obligation or responsibility on behalf of the other Party. The relationship between the Parties is intended to be, and shall at all times be construed as that of licensor and licensee.

- 7.5 **No Waiver**
No condoning, excusing or overlooking by the Licensor of any default by the Licensee, at any time or times, in performing or observing any of the Licensee's obligations hereunder, will operate as a waiver, renunciation, surrender of or otherwise affect the rights of the Licensor in respect of any continuing or subsequent default. No waiver of these rights will be inferred from anything done or omitted by the Licensor, except by an express waiver in writing.
- 7.6 **Order of Precedence**
If there is a conflict or ambiguity between this Agreement proper and any schedules thereto, the interpretation consistent with this Agreement proper (taking into consideration the statements in the recitals and headings) shall prevail and apply, notwithstanding any wording to the contrary in the applicable schedule.
- 7.7 **Notices**
The Licensor assumes no obligation or liability whatsoever for the provision of updates to the Data or the provision of notices in relation thereto to the Licensee.

Any use whatsoever of this data product shall constitute your acceptance of the terms of this agreement.

For further information please contact:

Licensing Services
Client Services Division, Statistics Canada
R.H. Coats Building, 9th floor, section A
100 Tunney's Pasture Driveway
Ottawa, Ontario K1A 0T6, Canada
E-mail: licensing@statcan.ca
Telephone: 613-951-1122
Fax: 613-951-1134

© Statistics Canada, 2008

Geography products feedback

Please tell us what you think of our products. Send your written comments or suggestions to:

GEO-Help
Geography Division
Statistics Canada
3rd Floor, Jean Talon Building
Tunney's Pasture
Ottawa, Ontario
K1A 0T6

Telephone: 613-951-3889

Fax: 613-951-0569

E-mail: geohelp@statcan.ca

To order, or for further information, contact us through the National inquiries line at 1-800-263-1136 or by e-mailing infostats@statcan.ca