



ENHANCED POINTS OF INTEREST (EPOI) User Manual

Version 2007.3

Published Date: August 15, 2007



**really
smart
spatial
solutions™**

DMTI Spatial Inc.
625 Cochrane Drive,
3rd Floor
Markham, Ontario
L3R 9R9 • Canada

P. 905-948-2000
1-877-477-3684
F. 905-948-9404

Table of Contents

ABOUT DMTI SPATIAL™	1
Really Smart Spatial Solutions™	2
DMTI Spatial™ Product & Service Portfolio	2
Technical Support, Error Reporting & Product Enhancement Services	Error! Bookmark not defined.
Contact Information	Error! Bookmark not defined.
Trademarks and Notices	Error! Bookmark not defined.
ABOUT EPOI V2007.3	4
File Properties	4
File Naming Conventions	4
<i>File Names by Region</i>	4
<i>File Names by 1996 Census Subdivision (CSD)</i>	4
<i>File Names by Standard Industrial Classification (SIC)</i>	4
<i>File Names of EPOI Look Up Tables</i>	5
EPOI File Structure	5
<i>Common Address Flag (CAF)</i>	6
<i>Precision Code (PREC_CODE)</i>	6
<i>Attribution Code (ATTRIBCODE)</i>	7
EPOI LOOK UP TABLE SPECIFICATIONS	7
<i>SIC Division Descriptions (sic_div_desc)</i>	8
<i>SIC Major Group Descriptions (sic_mjgrp_desc)</i>	8
DATA DICTIONARY	9
<i>Accommodation (acc)</i>	9
<i>Aerodromes (aer)</i>	9
<i>Building Names (bld)</i>	10
<i>Border Crossings & Customs Offices (bor)</i>	10
<i>Car Rental Agencies (car)</i>	11
<i>Cinemas (cin)</i>	11
<i>Car Pool Parking Lots (cpl)</i>	11
<i>Education (edu)</i>	12
<i>Financial Institutions (fin)</i>	13
<i>Fire Stations (fre)</i>	13
<i>Gasoline Service Stations (gas)</i>	13
<i>Golf Courses (glf)</i>	14
<i>Health Care (hcr)</i>	14
<i>Police Services (pol)</i>	14
<i>Retail Postal Outlets (rpo)</i>	15
<i>Shopping Centers (shp)</i>	15
<i>Ski Centers (ski)</i>	15
<i>Toll Booths (tol)</i>	15
<i>Tourist (tou)</i>	16
<i>Transit Stops (trs)</i>	16
<i>Weigh Stations (wgh)</i>	17
APPENDIX A: IMPORTING EPOI DATA IN GIS SOFTWARE	18
MapInfo	18
ArcView 3.x	19
ArcGIS 8.3	20
APPENDIX B: PROVINCIAL AND TERRITORIAL ABBREVIATIONS AND CODES	21
APPENDIX C: CANADIAN URBAN AREAS AND ABBREVIATIONS	22
APPENDIX D: STANDARD INDUSTRIAL CLASSIFICATION CODES	23

SIC Division	23
SIC Major Group.....	23
SIC Code	25
APPENDIX E: BORDER CROSSINGS AND CUSTOMS OFFICES	43
APPENDIX F: CANADIAN PAYMENTS ASSOCIATION CLASSIFICATION	46
APPENDIX G: CPIC NATIONAL DIRECTORY	48
English Abbreviations and Definitions	48
French Abréviations et Équivalents.....	52
APPENDIX H: ISO 19115:2003 COMPLIANT METADATA.....	57
<i>Metadata Notification</i>	57

About DMTI Spatial™

DMTI Spatial Inc. is Canada's leading spatial solutions provider. We enable users to understand their customers, optimize resources, realize opportunities, maximize profitability and make more informed decisions through accurate products and innovative thinking.

DMTI Spatial publishes precision built street map, rail and routing data (CanMap®), a detailed water layer, and innovative geocoding and address management software (GeoPinpoint™). In addition, DMTI Spatial publishes a full range of positionally accurate geospatial data products including: enhanced points of interest (EPOI), census data and boundaries, postal geography, topographic maps, and US mapping data. As part of a complete business geographic solution, DMTI Spatial offers a wide range of GIS services, consulting, and software training.

Established in 1994, DMTI Spatial is committed to setting the standard within the GIS industry for precision built spatial data and geocoding software products.

At DMTI Spatial, we believe that our true strength comes from working closely with our customers and providing innovative solutions to meet their strategic business objectives. As Canada's premier spatial solutions provider we pride ourselves with having worked with North America's leading organizations to support their mission critical applications.

DMTI Spatial works with large and small organizations representative of a wide variety of industries:

- Agriculture
- Banking/Finance
- Consulting
- Education
- Emergency Services
- Engineering
- Environmental
- Forestry
- Government
- Health
- High Technology
- Insurance
- Manufacturing
- Media
- Mining
- Real Estate
- Retail
- Telecommunications
- Transportation
- Utilities

We are a member of the ESRI Canada Business Partner Program, and winner of the 2001 ESRI Worldwide New Business Partner of the Year Award and the 2005 ESRI Foundation Partner of the Year Award. We are a strategic business partner of MapInfo and winner of the Markham Board of Trade 2000 Award for Entrepreneurship and Innovation. Recipient of The Association of Canadian Map Libraries and Archives (ACMLA) 2002 Certificate of Appreciation.



Really Smart Spatial Solutions™

Through the application of its products and services, DMTI Spatial has been involved with projects such as: location-based services, logistics planning, emergency dispatch, facilities management, data management, customer care, address management, land base development in support of network planning, and marketing/demographic analysis applications.

DMTI Spatial can provide all of the components necessary for the acquisition, implementation, operation and maintenance of a successful GIS system within companies of all sizes. Through its product and service offering, DMTI Spatial can provide users with 5 key components:

1. Accurate, detailed, and compatible data
2. Comprehensive maintenance program
3. GIS software
4. Consulting and services
5. Software training

DMTI Spatial™ Product & Service Portfolio

DMTI Spatial's product & service offering includes:

CanMap® - Digital Map Data for Canada

- CanMap® Streetfiles
- CanMap® RouteLogistics
- CanMap® Rail
- CanMap® Major Roads and Highways
- CanMap® Parks & Recreation
- CanMap® Water

Satellite Imagery

- Satellite StreetView™

Municipal Amalgamations

- CanMap® Municipality Amalgamation File (MAF)

Business & Recreational Points of Interest

- Enhanced Points Of Interest (EPOI)

GeoPinpoint™ Suite

- Canada's Geocoding Solution
- Modular Architecture
- Windows Standalone Desktop Version
- UNIX, Java Wrapper, ActiveX (DLL Version)

Topographic Data and Base Maps

- Canadian Atlas Map Bundle (CAMB)
- Populated Placenames
- National Topographic Data Base (NTDB)
- 30 & 90m Digital Elevation Models (DEM)
- Clutter Data

Postal Geography & Data

- Six-Digit Postal Code File (LDU)
- Enhanced Postal Code File (MEP)
- Forward Sortation Areas (FSA) Boundary File

1996 Census Boundaries & Demographic Data

- Enumeration Area (EA)
- Census Subdivision (CSD)
- Census Division (CD)
- Census Metropolitan Area/Census Agglomeration (CMA/CA)
- Census Tract (CT)
- Federal Electoral Districts (FED)

2001 Census Boundaries

- Dissemination Area (DA)
- Census Subdivision (CSD)
- Census Division (CD)
- Census Metropolitan Area/Census Agglomeration (CMA/CA)
- Census Tract (CT)
- Federal Electoral Districts (FED)

GIS Software

- Contour Modeling and Display
- Demographic Profiling and Lifestyle Targeting
- Geocoding and Mapping Software
- Routing and Logistics

Consulting and Services

- Application Development
- Database Marketing
- Data Conversion and Creation
- Database Scrubbing
- Geocoding Services
- GIS Consulting
- Technical Support

Technical Support, Error Reporting & Product Enhancement Services

DMTI Spatial is committed to building the best products possible for our customers. By using our data every day in your mission critical application you are our best source for product refinement. Please let us know if you have an enhancement request or found an error in any of our products so that we can make the correction for the next release.

This is your opportunity to provide feedback directly to the DMTI Spatial Product Development Team. Please be as specific as possible so that we can improve our products quickly and accurately. To submit an error or request technical assistance please visit: <http://www.dmtispatial.com/support/>

If you have an idea for a new product, or an enhancement request for an existing product, please visit our product manager's desk on the web at: <http://www.dmtispatial.com/pm/> or e-mail: pm@dmtdispatial.com

Contact Information

DMTI Spatial Inc.
625 Cochrane Drive, 3rd Floor
Markham, Ontario
L3R 9R9 Canada

Telephone: 905-948-2000
Toll Free: 1-877-477-DMTI (3684)
Fax: 905-948-9404

Web Site: www.dmtispatial.com
Error Reporting Service: fixme@dmtdispatial.com
Product Enhancement Requests: pm@dmtdispatial.com
Technical Support: support@dmtdispatial.com

Trademarks and Notices

© 2005 DMTI Spatial Inc. CanMap is a registered trademark of DMTI Spatial Inc. DMTI Spatial, Really Smart Spatial Solutions, Because Where Is What Matters and GeoPinpoint are trademarks of DMTI Spatial Inc. All rights reserved. Other products and company names mentioned herein may be trademarks of their respective companies. Mention of third-party products is for informational purposes only and constitutes neither a recommendation nor an endorsement.

DMTI Spatial is an Authorized User and Distributor of selected Statistics Canada Computer File(s) under Licensing Agreement 6228. No confidential information about an individual, family, household, organization or business has been obtained from Statistics Canada.

© Copyright, HER MAJESTY THE QUEEN IN RIGHT OF CANADA, as represented by the Minister of Industry, Statistics Canada 2003.

Digital Topographic Data produced under License from Her Majesty the Queen in Right of Canada, with permission of Natural Resources Canada and The Queen in Right of Manitoba.

About EPOI v2007.3

File Properties

Property	Description
Coverage	Nationwide
Currency	May 15, 2007
Format	ASCII text files (comma delimited) ¹

File Naming Conventions

Representing the data coverage, files are either named by a region, Statistics Canada census subdivision (CSD) number, or a Standard Industrial Classification.

File Names by Region

For example: \On.txt




Geographic Area Abbreviation ²
ON

File Names by 1996 Census Subdivision (CSD)

Census Subdivision is the general term applied to municipalities (as determined by provincial legislation) or their equivalent, for example Indian reserves, Indian settlements and unorganized territories.

All files are prefixed with the Census Subdivision Code. An additional text file (CSD.txt) containing a CSD and its associated municipality name is included in each order by CSD.

For example: \3520004_A.txt

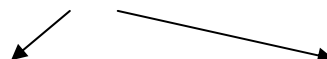


Census Subdivision	File Name
3520004 (Toronto)	A (Division A)

File Names by Standard Industrial Classification (SIC)

Orders by SIC will contain the SIC specification of the data purchased in the file name.³

For example: \OnA.txt



Geographic Area Abbreviation	File Name
ON	A (SIC Division A)

¹ See [Appendix A: Importing Data Into GIS Software](#) for information on how to import EPOI files into GIS software (including MapInfo, ArcView 3.x, and ArcGIS 8.1).

² See [Appendix B: Provincial and Territorial Abbreviations and Codes](#) and [Appendix C: Canadian Urban Areas and Abbreviations](#) for a list of region names and their abbreviations.

³ For a list of File Name abbreviations, refer to [Appendix D: Standard Classification \(SIC\) Codes](#).

File Names of EPOI Look Up Tables

Look up tables contain information such as; the number of beds in a hospital, the location code of an airport, and the grade range taught within a school. Look up tables are linked to the main table via the POI_ID field. For example, a record in the POI database that has an EPOI_TYPE = POL (Police Services) links via the POI_ID field to the “pol” (Police Services) look up table.

EPOI and EPOI Look Up Table Examples

EPOI File	EPOI Look Up Table	Description
OnJ.TXT	OnJ_POL.txt	Ontario by SIC Division “J” (Public Administration)
On92.txt	On92_POL.txt	Ontario by SIC Major Group “92” (Justice, Public Order, And Safety)
On9221.txt	On9221_POL.txt	Ontario by SIC Code “9221” (Police Protection)

Enhanced attribution can be found in the following look up tables.

EPOI_TYPE Classification	EPOI_TYPE Description
ACC	Accommodation
AER	Aerodromes
BLD	Building Names
BOR	Border Crossings & Customs Offices
CAR	Car Rental Agencies
CIN	Cinemas
CPL	Car Pool Parking Lots
EDU	Education
FIN	Financial Institutions
FRE	Fire Stations
GAS	Gasoline Service Stations
GLF	Golf Courses
HCR	Health Care
POL	Police Services
RPO	Retail Postal Outlets
SHP	Shopping Centres
SKI	Ski Centres
TOL	Toll Booths
TOU	Tourist
TRS	Transit Stops
WGH	Weigh Stations

EPOI File Structure

Field Name	Field Type	Field Size	Field Description
POI_ID	Character	15	Unique ID
NAME	Character	150	Name
UNIT_SUITE	Character	25	Unit or Suite #
ADDRESS	Character	45	Address
DELIV_MODE	Character	25	General Delivery Address (i.e. PO BOX)

CITY	Character	68	City or Municipality
PROV	Character	2	Province
POST_CODE	Character	7	Postal Code
LOCATION	Character	100	Description of location
PHONE	Character	15	Phone Number
FAX	Character	15	Fax Number
TOLL_FREE	Character	15	Toll Free Number
EPOI_TYPE	Character	3	Three letter abbreviation of EPOI type
CAF	Character	15	Common Address Flag
SIC_1	Character	8	Standard Industrial Classification - Primary
SIC_2	Character	8	Standard Industrial Classification
SIC_3	Character	8	Standard Industrial Classification
SIC_4	Character	8	Standard Industrial Classification
SIC_5	Character	8	Standard Industrial Classification
SIC_6	Character	8	Standard Industrial Classification
SIC_MJ_GRP	Character	2	Standard Industrial Classification Major Group
SIC_DIV	Character	1	Standard Industrial Classification Division Group
X	Number		Longitude
Y	Number		Latitude
PREC_CODE	Character	2	Precision code indicating accuracy of geocoded point
ATTRIBCODE	Character	2	Attribution code indicating the accuracy of attribute data

Common Address Flag (CAF)

It is common for businesses or other recreational facilities to share addresses, for example in skyscrapers or shopping centers. The EPOI product has a feature that allows users to identify records that have common addresses. A group by query on the CAF field will allow a user to extract a single record by address. The CAF is an alphanumeric code that is unique to a unique address.

NAME	ADDRESS	SIC	PHONE	CAF
Business 1	10 Main St.	A	1	ADD1
Business 2	10 Main St.	B	2	ADD1
Business 3	10 Main St.	C	3	ADD1
Business 4	1 King St.	D	4	ADD2
Business 5	1 King St.	E	5	ADD2

The CAF is only applied to records that have an address. Some DMTI-sourced records (AttribCode = "1") do not have an address and therefore the CAF field is blank.

Precision Code (PREC_CODE)

Value	Description
1	Centroid of 1:50 000 NTDB feature or placed via Orthorectified photo
2	Block-face representative point from CanMap streets - High precision
3	Block-face representative point from CanMap streets - Lower precision
4	Postal Code - Block-face representative point
5	Postal Code - EA Centroid / FSA Centroid
6	Municipal Centroid

Attribution Code (ATTRIBCODE)

Value	Description
1	DMTI Spatial sourcing
2	Other sourcing – High confidence (Validated by DMTI Spatial)

EPOI Look Up Table Specifications

Look Up Tables link to the main database via EPOI_TYPE and POI_ID for enhanced attribution. Enhanced attribution can be found in the following look up tables.

EPOI_TYPE Classification	EPOI_TYPE Description
ACC	Accommodation
AER	Aerodromes
BLD	Building Names
BOR	Border Crossings & Customs Offices
CAR	Car Rental Agencies
CIN	Cinemas
CPL	Car Pool Parking Lots
EDU	Education
FIN	Financial Institutions
FRE	Fire Stations
GAS	Gasoline Service Stations
GLF	Golf Courses
HCR	Health Care
POL	Police Services
TOL	Toll Booths
TOU	Tourist
TRS	Transit Stops
WGH	Weigh Stations

SIC Look Up Tables link to the main database via SIC Division or SIC Major Group.

Look Up Table	Look Up Table Description
sic_mjgrp_desc	SIC Major Group Descriptions
sic_div_desc	SIC Division Descriptions

SIC Division Descriptions (sic_div_desc)

The SIC Division Description table includes the description of all SIC Divisions that exist in the file.

File Structure

Field Name	Field Type	Field Size	Field Description
SIC_DIV	Character	1	SIC Division Group
DESCRIPTION	Character	150	Description of SIC Division

SIC Major Group Descriptions (sic_mjgrp_desc)

The SIC Major Group Description table includes the description of all SIC Major Groups that exist in the file.

File Structure

Field Name	Field Type	Field Size	Field Description
SIC_MJ_GRP	Character	2	SIC Major Group
DESCRIPTION	Character	150	Description of SIC Major Group

Data Dictionary

Accommodation (acc)

The accommodation layer includes hotels, motels, and inns.

File Structure

Field Name	Field Type	Field Size	Field Description
POI_ID	Character	15	Unique ID (link to main POI database)
EPOI_TYPE	Character	3	Point of Interest Classification
CHAIN	Character	100	Accommodation Chain

Aerodromes (aer)

The aerodromes layer includes airports, heliports, and water aerodromes.¹

File Structure

Field Name	Field Type	Field Size	Field Description
POI_ID	Character	15	Unique ID (link to main EPOI database)
EPOI_TYPE	Character	3	Point of Interest Classification
ICAO_CODE	Character	4	Location Indicator assigned by Transport Canada and the U.S. Federal Aviation Administration (4 character)
IATA_CODE	Character	3	Location indicator assigned by Transport Canada and the U.S. Federal Aviation Administration (3 character)
AER_TYPE	Character	10	Type of Aerodrome
STATUS	Character	10	Operational Status of Aerodrome. Indicates if the aerodrome is operational or abandoned.
NAME_ALIAS	Character	125	Alternate name of Aerodrome
X1	Number		Longitude of first or main entrance point (Terminal 1)
Y1	Number		Latitude of first or main entrance point (Terminal 1)
X2	Number		Longitude of second entrance point (Terminal 2)
Y2	Number		Latitude of second entrance point (Terminal 2)
X3	Number		Longitude of third entrance point (Terminal 3)
Y3	Number		Latitude of third entrance point (Terminal 3)

Contents

AER_TYPE	Description
LAND	Aerodromes that provide an advantage for the aviation community are included. This includes aerodromes that are open to the public, are used by more than one aircraft and have a telephone available for users of the aerodrome.
WATER	Water aerodromes that provide an advantage for the aviation community are included, typically this includes aerodromes that are open to the public, are used by more than one aircraft, have an area for docking or beaching with tie downs and have a telephone available for users of the aerodrome.
HELIPORT	Heliports that provide an advantage for the aviation community are included. This includes heliports that are open to the public, are used by more than one aircraft and

¹ Source: Geomatics Canada, Canada Flight Supplement and Canada Water Aerodrome Supplement (WAS), March 2003

	have a telephone available for users of the heliport.
--	---

Name and Name_Alias

The Name field contains the names of aerodromes and indicates what communities they may serve. The Name_Alias field provides an alias for the aerodrome. For example:

Name	City	Name Alias
Toronto/Lester B. Pearson Intl	Toronto	Lester B Pearson International Airport
Montréal/St-Hubert	Montréal	Aéroport de Saint-Hubert
Calgary/Springbank	Calgary	Calgary Springbank Airport

Building Names (bld)

The Building Names layer includes building names and building types.

File Structure

Field Name	Field Type	Field Size	Field Description
POI_ID	Character	15	Unique ID (link to main EPOI database)
EPOI_TYPE	Character	3	Point of Interest Classification
SUITE_FROM_NUM	Character	25	The lowest value in a range of suites or apartments
SUITE_TO_NUM	Character	25	The highest value in a range of suites or apartments
BUILD_TYPE	Character	11	Representation of whether the building is a business building or an apartment building

Border Crossings & Customs Offices (bor)

The Borders Crossings and Customs Offices layer includes independent offices, subordinate offices, service sites, and warehouses.

File Structure

Field Name	Field Type	Field Size	Field Description
POI_ID	Character	15	Unique ID (link to main EPOI database)
EPOI_TYPE	Character	3	Point of Interest Classification
BOR_TYPE	Character	10	Indicates if a port is an Independent, a Subordinate or a Service Site
PORT_NO	Character	5	The number of the Independent Port
REP_TO	Character	35	The name and number of the Independent Port that a Subordinate or Service site reports to
HUB	Character	1	Indicates if a port is a HUB or not. A HUB is an independent office to which a subordinate office would report.
SERVICES	Character	45	Types of services available at that port ¹
US_PORT	Character	30	Name of the US Customs Office opposite to the Canadian Customs Office

¹ Detailed information regarding customs operations, the hours and types of services available at custom offices, definitions of terms, and abbreviations used in the Services field, can be found in [Appendix E: Border Crossings and Customs Offices](#).

Contents

BOR_TYPE	Description
IND	Independent Offices
SER	Service Sites
SUB	Subordinate Offices

Car Rental Agencies (car)

The Car Rental Agencies layer includes the following Car Rental Agencies: Alamo, Avis, Budget, Discount, Enterprise, Hertz, National and Thrifty.

File Structure

Field Name	Field Type	Field Size	Field Description
POI_ID	Character	15	Unique ID (link to main EPOI database)
EPOI_TYPE	Character	3	Point of Interest Classification
CHAIN	Character	100	Car Rental Chain
LOC_CODE	Character	10	Unique Identifier for a branch within a chain

Cinemas (cin)

The cinema layer contains cinemas across Canada.

File Structure

Field Name	Field Type	Field Size	Field Description
POI_ID	Character	15	Unique ID (link to main EPOI database)
EPOI_TYPE	Character	3	Point of Interest Classification
SCREEN_NO	Character	5	Number of screens in given theatre
PHONE_2	Character	15	Second phone number

Car Pool Parking Lots (cpl)

The Car Pool Parking Lots layer indicates the name, exit number, and location of Car Pool Parking Lots on the Major Expressways. This layer provides data for Ontario only.

File Structure

Field Name	Field Type	Field Size	Field Description
POI_ID	Character	15	Unique ID (link to main EPOI database)
EPOI_TYPE	Character	3	Point of Interest Classification
EXIT_NUM	Character	5	Hwy exit number at location of Car Pool Lot
DIRECTION	Character	2	Direction of Hwy Car Pool Lot

Education (edu)

The Education layer includes Elementary Schools, High Schools, Colleges, Cégeps and Universities.

File Structure

Field Name	Field Type	Field Size	Field Description
POI_ID	Character	15	Unique ID (link to main EPOI database)
EPOI_TYPE	Character	3	Point of Interest Classification
EDU_TYPE	Character	10	Education Point of Interest Classification
DISTRICT	Character	100	District where the facility resides
LEVEL	Character	10	Teaching Level
LANGUAGE	Character	10	Predominate or language-only type Some educational facilities use two languages to teach, but one is usually predominant. The dominant language is represented first.
GRADES	Character	10	Grade range

Contents

EDU_TYPE	Description
CG	Cégep
CL	College
FN	First Nations
P	Public
PR	Private/Independent
S	Catholic (Separate)
SN	Special Needs
UV	University

LANGUAGE	Description
E	English
F	French
H	Hebrew
G	German
U	Ukrainian
C	Cree
F/E	French & English
E/F	English & French
E/H	English & Hebrew
E/G	English & German
E/U	English & Ukrainian

LEVEL	GRADES	Description
J	K-6	Junior
I	7-8	Intermediate
S	9-12	Senior
J/I	K-8	Junior/Intermediate
I/S	7-12	Intermediate/Senior

J/I/S	K-12	Junior/Intermediate/Senior
-------	------	----------------------------

Financial Institutions (fin)

The Financial Institutions layer includes financial institutions belonging to one of the following three groups: (1) Banks, (2) Credit Unions and Caisses Populaires, (3) Trust Companies, Loan Companies, and Other Deposit-Taking Institutions.

File Structure

Field Name	Field Type	Field Size	Field Description
POI_ID	Character	15	Unique ID (link to main EPOI database)
EPOI_TYPE	Character	3	Point of Interest Classification
FIN_TYPE	Character	70	Type of Payment Association ¹

Fire Stations (fre)

The Fire Stations layer includes fire stations in the provinces of Ontario, Quebec, British Columbia, Alberta and Saskatchewan.

File Structure

Field Name	Field Type	Field Size	Field Description
POI_ID	Character	15	Unique ID (link to main EPOI database)
EPOI_TYPE	Character	3	Point of Interest Classification
STATION	Character	68	Name of Fire Station
STN_TYPE	Character	3	Type of Fire Station

Gasoline Service Stations (gas)

The Gasoline Service Stations layer is comprised of six different gas companies: Husky, Irving, PetroCanada, Pioneer, Shell, and Sunoco. Pioneer and Sunoco gas stations are provided for Ontario only.

File Structure

Field Name	Field Type	Field Size	Field Description
POI_ID	Character	15	Unique ID (link to main EPOI database)
EPOI_TYPE	Character	3	Point of Interest Classification
CHAIN	Character	100	Gas Station Chain
PROPANE	Character	3	Propane Available
DIESEL	Character	3	Diesel Available

¹ A complete listing of financial institutions, and their corresponding FIN_TYPE classification is found in [Appendix F: Canadian Payments Association Classification](#).

Golf Courses (glf)

The Golf Courses layer contains Private and Public golf courses.

File Structure

Field Name	Field Size	Field Type	Field Description
POI_ID	Character	15	Unique ID (link to main EPOI database)
EPOI_TYPE	Character	3	Point of Interest Classification
NUM_HOLE	Character	5	Number of Holes at Golf Course
GLF_TYPE	Character	15	Golf Course Point of Interest Classification

Health Care (hcr)

The Health Care layer includes Hospitals, Long-Term Care Centers, Nursing Stations, Outpatient Clinics and Community Health Centers.

File Structure

Field Name	Field Type	Field Size	Field Description
POI_ID	Character	15	Unique ID (link to main EPOI database)
EPOI_TYPE	Character	3	Point of Interest Classification
TOTAL_BEDS	Character	5	Total number of beds
HCR_TYPE	Character	1	Health Care Point of Interest Classification

Contents

HCR_TYPE	Description
H	Acute Care Hospital
L	Long-Term Care Center
N	Nursing Station
O	Outpatient Clinic
C	Community Health Center

Police Services (pol)¹

The Police Services layer includes the Ontario Provincial Police (OPP), Royal Canadian Mounted Police (RCMP), Sûreté du Québec (SQ), the Royal Newfoundland Constabulary (RNC), and other municipal police services.²

File Structure

Field Name	Field Type	Field Size	Field Description
POI_ID	Character	15	Unique ID (link to main EPOI database)
EPOI_TYPE	Character	3	Point of Interest Classification

¹ Source: CPIC National Directory, Canadian Police Information Centre, 2002.

² A complete listing of abbreviations and definitions (English/ French) used in the Police Services layer is found in [Appendix G : CPIC National Directory](#).

STN_ADMIN	Character	70	Police Station or Administrator
POL_TYPE	Character	10	Police Service Point of Interest Classification

Contents

POL_TYPE	Description
MUN	Municipal Police Service
OPP	Ontario Provincial Police
RNC	Royal Newfoundland Constabulary
RCMP	Royal Canadian Mounted Police
SQ	Sûreté du Québec

Retail Postal Outlets (rpo)

The Retail Postal Outlets layer includes over 8500 postal outlets across Canada.

Note: There is no look up table for the RPO layer. All relevant information is found in the main table.

Shopping Centers (shp)

The Shopping Centers layer includes over 2000 shopping centers across Canada.

Note: There is no look up table for the SHP layer. All relevant information is found in the main table.

Ski Centers (ski)

The Ski Centers layer is comprised of over 200 skiing facilities across Canada.

Note: There is no look up table for the SKI layer. All relevant information is found in the main table.

Toll Booths (tol)

The Toll Booths layer indicates the name and location of Toll Booths.

File Structure

Field Name	Field Type	Field Size	Field Description
POI_ID	Character	15	Unique ID (link to main EPOI database)
EPOI_TYPE	Character	3	Point of Interest Classification
DIRECTION	Character	2	Direction of road that toll booth is located on

Contents

DIRECTION	Description
E	East
W	West
N	North
S	South

Tourist (tou)

The Tourist layer includes categories such as National, Provincial and Municipal parks, Art Galleries, Attractions, Fishing Resorts, Historic Sites, Museums, Science Centres, Tourist Information Booths, and Zoos.

File Structure

Field Name	Field Type	Field Size	Field Description
POI_ID	Character	15	Unique ID (link to main EPOI database)
EPOI_TYPE	Character	3	Point of Interest Classification
TOU_TYPE	Character	5	Tourist Point of Interest Classification
SEASON	Character	50	Season that Tourist POI is open

Content

TOU_TYPE

TOU_TYPE	Description
ACH	Archive
ADV	Outdoor Adventure Company/Tour
AQU	Aquarium
ATT	Attraction
BCH	Beach
CAS	Casino
CEC	Cultural or Environmental Education Center
CUL	Cultural Center
DFS	Duty-Free Shop
FSH	Fishing Lodge/Camp
GAL	Art Gallery
GDN	Garden
GSV	Government Services

TOU_TYPE	Description
HIS	Historic Site/Park/Location
LIB	Library
MUS	Museum
NAT	Nature Preserve/Conservatory
OBS	Observatory
ORG	Organization related to Arts and Culture
PNT	Planetarium
PRK	Park
RLG	Religious Institution
SCI	Science Centre
SCN	Scenic Site/Trail/Area
TIB	Tourist Information Board
WTS	Water Tour/Cruise
ZOO	Zoo

Transit Stops (trs)

The Transit Stops layer contains the Type, Owner, Route and Number (if applicable).

File Structure

Field Name	Field Size	Field Type	Field Description
POI_ID	Character	15	Unique ID (link to main EPOI database)
EPOI_TYPE	Character	3	Classification of the EPOI
TRS_TYPE	Character	25	Transit Stop points of interest classification
OWNER	Character	68	Transit Stop points of interest ownership
ROUTE	Character	68	Transit Stop points of interest transit route

TRS_NUM	Character	8	Transit Stop points of interest number
CODE	Number		Transit Stop points of interest NTDB code
FEATURE	Character	76	Transit Stop points of interest NTDB feature

Weigh Stations (wgh)

The weigh stations layer (at a minimum) contains the Name and Address (if applicable) of each weigh station as well as the site type (permanent or portable scale).

File Structure

Field Name	Field Size	Field Type	Field Description
POI_ID	Character	15	Unique ID (link to main EPOI database)
EPOI_TYPE	Character	3	Classification of the EPOI
DIRECTION	Character	2	Indicates the direction of road scale is on
HOURS	Character	20	Hours of operation
YEAR_ROUND	Logical		Year Round Operation
RESTROOM	Logical		Restrooms available
WGH_TYPE	Character	10	Weigh Station Point of Interest Classification
AVION401	Logical		Avion 401 automated clearance system

Contents

DIRECTION	Description
N	North
S	South
E	East
W	West
O	Ouest
NS	North & South (can be accessed from either direction)
EW	East & West (can be accessed from either direction)

WGH_Type

Value	Description
Perm	Permanent Scale
Port	Portable Scale

Appendix A: Importing EPOI Data in GIS Software

When importing the database please be sure to check that the X and Y fields are of the right type.

MapInfo

Creating a MapInfo (.tab) table

1. Open MapInfo.
2. File > Open Table > Select *EPOI.txt* file and double-click.
3. In dialog box, for "Delimited ASCII Information" choose 'Other' (comma), the 'File Character Set' should be "Windows US & W. Europe ("ANSI")", and check off the Use First Line for Column Titles. **See Figure 1.**
4. Click OK.
5. File > Save Copy As...choose folder to save file.
6. Open the new .tab file.

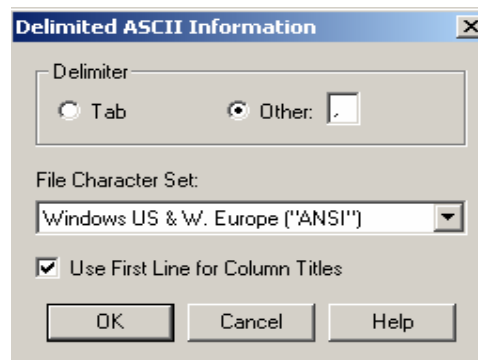


Figure 1: Delimited ASCII Information

Creating MapInfo Graphics from Coordinate Fields

7. Table > Create Points > Select *EPOI.tab* file
8. Adjust the symbol size, colour, and shape by selecting "Symbol Style".
9. Choose the "x" field in the 'Get X Coordinates from Column' in the drop down box.
10. Choose the "y" field in the 'Get Y Coordinates from Column' in the drop down box.
11. Click on Projection, select the Category (Longitude/Latitude) and the Category Member (Longitude/Latitude (NAD83))
12. Click OK.

Creating MapInfo Lookup tables

13. Repeat steps 1 to 6

Linking the EPOI table to the EPOI Lookup tables

14. Open the EPOI table and the EPOI look up tables in MapInfo
15. Select Query > SQL select.
16. Click on "from Tables" box and click "Tables", select the EPOI table and the look up table
17. Click on "where Condition" box, enter the condition so that the POI_ID from each table is equal.
18. Click on "into Table Named" box and name the new file. **See Figure 2.**

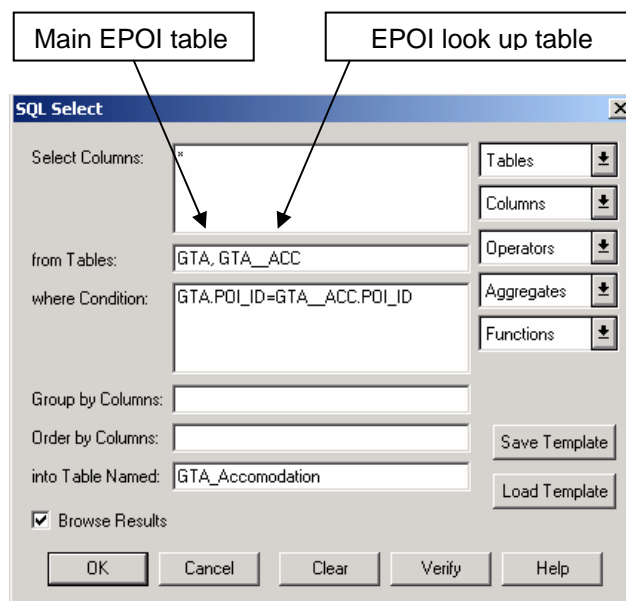


Figure 2: Linking the EPOI table to the EPOI Lookup tables

ArcView 3.x

Opening txt file(s) and making ArcView files (*.shp)

1. Open ArcView > New Project as a blank project.
2. From the Project Window, click on 'Tables'. Click "Add". Change the 'List Files of Type' to "Delimited Text (*.txt)", then navigate to the *EPOI.txt* file(s). Click OK.

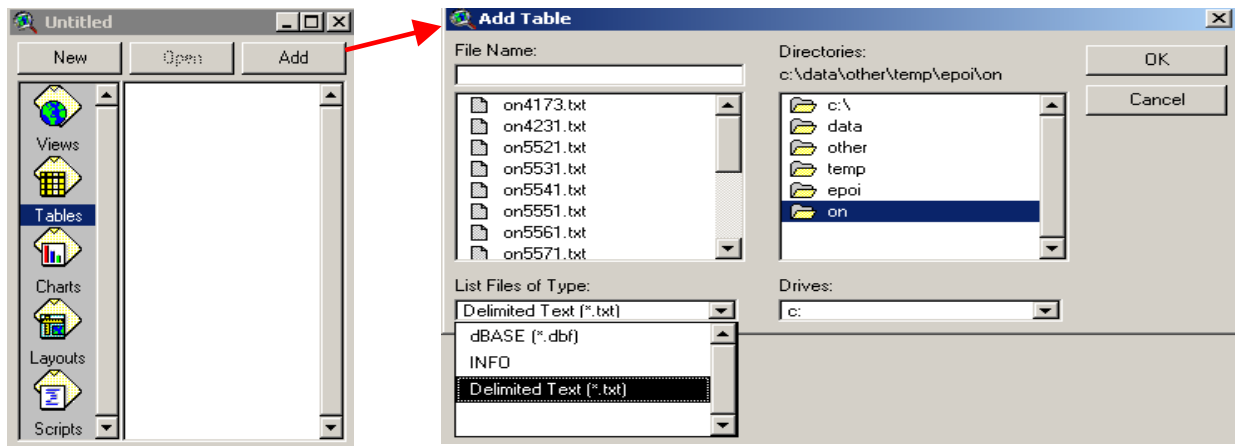


Figure 3: Creating ArcView files

Creating Graphics from Coordinate Fields

3. In Project Window, click 'Views'. Press "New" to add a view.
4. Select View > Add Event Theme. Select the correct table, and X/Y coordinate fields from the *EPOI.txt* file. Click OK.
5. In the View select the *EPOI.txt* layer to make the layer active.
6. Select Theme > Convert to Shapefile > Navigate to the location where the files will be saved. Name the file and Click OK. When ArcView asks to add the shapefile as a theme to the view, Press YES. The new theme with the .shp extension will appear in the view.

Creating Projection Datum Metadata (*.prj files):

7. In the same project, from the Menu > File > Extensions. Scroll down to Projection Utility Wizard, click on the checkbox and Click OK.
8. File > ArcView Projection Utility. In Step 1, select the shape file and press Next. In Step 2, the 'Coordinate System Type' should be "Geographic". From the 'Name' dropdown box, select "GCS_North_American_1983 [4269]", and the units in "Degree [9102]", then press Next. ArcView will ask to save the coordinate system information, press Yes and a Project file (*.prj) will be created with the shape files. Cancel out of the Utility. To continue would actually re-project the files.

Opening Lookup tables in ArcView:

9. In the same project, click from the Project Window – Tables. Press Add to bring in the lookup table. Click Open to see the database.
10. File – Export – this will convert the text file to a dBASE format for ArcView. Select the location to save and press OK.
11. The text version of the lookup table can be deleted from the project. Open the new dBASE file.
12. Repeat for each lookup table as required.

Linking Lookup tables to the main EPOI table

To view the main EPOI table linked to the Look up tables, the files should be manually joined. To join the files use the following directions:

13. View both the main EPOI table and the Look up table (attribute tables)
14. Click on the POI_ID fields from both the main EPOI table and the Look up table
15. Click on the Join button (or choose Join from the Table menu).
16. Additional Look up tables can be joined, so that many tables' attributes can be shown at one time.
To undo the joins between the tables, click on the attribute table, making it active, and from the 'Table' menu select 'Remove All Joins'.

ArcGIS 8.3

Opening txt file(s) and Creating ArcMap files:

1. Start with a new empty map. Click OK.
2. File > Add Data > navigate to the EPOI.txt files and Click Add.

Note: "ON" is an SQL statement in ArcGIS and therefore ON.txt cannot be opened and must be renamed as ONT.txt. The renaming of this file will not affect the link to the Ontario lookup table.

Creating Graphics from Coordinate Fields:

3. Tools > Add X, Y Data > choose the table and the X, Y fields.
4. Choose the coordinate system by clicking Edit. Then from 'Select Coordinate System', select Geographical Coordinate System, then North America, then North American Datum 1983. Click Add, then Apply, then OK. A project file (*.prj) is created containing the coordinate information.
5. Make the event theme active (ie. EPOI.txt Events).
6. Right click on the 'Events' theme, choose 'Data', then 'Export Data'. Export all features. Click on the 'Use the same Coordinate System as the data frame' button. Browse to specify where the theme will be stored. Click OK.
7. ArcMap will ask to add the layer to the view. Click Yes. Remove the 'Events' theme.

Opening Lookup Tables in ArcMap

8. Repeat the first two steps under "Opening txt files and creating ArcMap files" to open the Lookup tables. Right click on the Lookup table and select 'Open' to view.

Linking Lookup tables to the main EPOI table

To view the main EPOI table linked to the Look up tables, the files must be manually joined together.

9. Add both the main EPOI table and Lookup table to the Layers. Right click the Lookup table and select 'Joins and Relates' > 'Join'.
10. Choose the field the join will be based on (i.e. POI_ID), then select the table to join too, and Click OK.

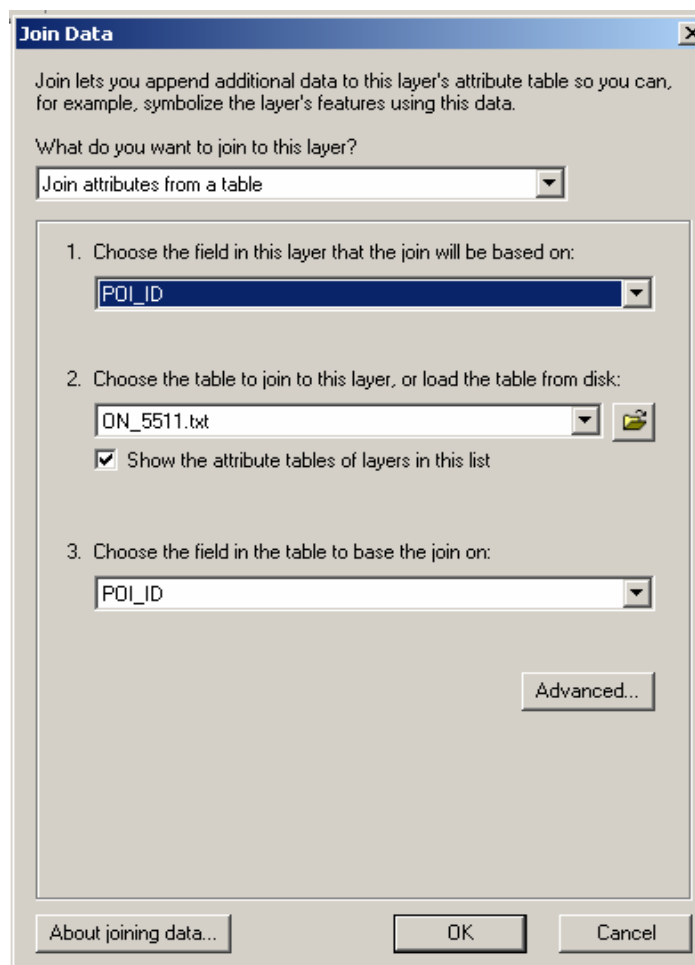


Figure 4: Creating graphics from coordinate fields

Appendix B: Provincial and Territorial Abbreviations and Codes¹

The provincial/territorial names, abbreviations and numeric codes reflect those in effect on January 1, 2001 with the exception of the name change of the province of Newfoundland and Labrador (previously Newfoundland), which came into effect on December 6, 2001. Newfoundland and Labrador was recognized by the alpha code NL (formerly NF). There were no changes to the numeric code (10) and abbreviations for Newfoundland and Labrador.

On April 1, 1999 the Northwest Territories was divided into two territories to create Nunavut Territory. The province/territory numeric code for Nunavut is 62 whereas the code for the Northwest Territories remained at 61. On December 18, 2000, Canada Post has introduced a new alpha code (NU) for Nunavut.

Province/Territory (English)	Province/Territory (French)	Abbreviation ²	Numeric Code
Alberta	Alberta	AB	48
British Columbia	Colombie-Britannique	BC	59
Manitoba	Manitoba	MB	46
New Brunswick	Nouveau-Brunswick	NB	13
Newfoundland and Labrador	Terre-Neuve-et-Labrador	NL	10
Nova Scotia	Nouvelle-Écosse	NS	12
Northwest Territories	Territoires du Nord-Ouest	NT	61
Nunavut	Nunavut	NU	62
Ontario	Ontario	ON	35
Prince Edward Island	Île-du-Prince-Édouard	PE	11
Québec	Québec	QC	24
Saskatchewan	Saskatchewan	SK	47
Yukon	Yukon	YT	60

¹ Source: Statistics Canada, Standard Geographical Classification (SGC) 2001

² Source: Canada Post Corporation, The Canadian Addressing Guide, October 2002

Appendix C: Canadian Urban Areas and Abbreviations

Canadian urban areas are based upon DMTI's topographic coverage areas. The following table is a partial list of urban areas and their abbreviations. For a complete listing of Canadian urban areas refer to the CANtop file located in the Canada Directory or for information regarding other areas contact DMTI Spatial.

Province	Topographic Coverage Area	Abbreviation
AB	Calgary	CLGRY
AB	Edmonton	EDMNT
BC	Vancouver	VNCVR
BC	Victoria	VCTRA
MB	Winnipeg	WINPG
NB	Fredericton	FRDTN
NB	Saint John	STJON
NL	Labrador City	LBDRG
NL	St. John's	STJHN
NS	Halifax	HALFX
NT	Yellowknife	YLKNF
NU	Iqaluit	IQALT
ON	Greater Toronto Area	GTA
ON	Hamilton Niagara	HAMNG
ON	Ottawa	OTAWA
PE	Charlottetown	CHLTN
QC	Hull	HULL
QC	Montreal	MNTRL
QC	Quebec City	QBCTY
SK	Regina	RGNA
YT	Whitehorse	WTHRS

Appendix D: Standard Industrial Classification Codes

What is an SIC Code?

Standard Industrial Classification (SIC) codes are four digit* numerical codes that were established in 1987 by the U.S. Government. The codes were assigned to businesses to group and identify their primary area of business activity and to facilitate the collection of economic data for statistical analysis by federal, state, and private organizations. The SIC code classifications cover all economic related activities including agriculture, forestry & fishing; mining; construction; manufacturing; transportation, communications, electric, gas, and sanitary services; wholesale trade; retail trade; finance, insurance, real estate; health, education, recreation and other services; and public administration.

* To accommodate for future changes to the SIC code DMTI has adopted a policy of representing the code with eight (8) characters. The four zeroes at the end of the code are a temporary space holder.

SIC Division

SIC Division is represented by a single letter, for example Division G refers to Retail Trade. Each Division represents a broad area of economic activity:

Division	Description	SIC Range
A	Agriculture, Forestry, And Fishing	01 to 09
B	Mining	10 to 14
C	Construction	15 to 17
D	Manufacturing	20 to 39
E	Transportation, Communications, Electric, Gas, And Sanitary Services	40 to 49
F	Wholesale Trade	50 to 51
G	Retail Trade	52 to 59
H	Finance, Insurance, And Real Estate	60 to 67
I	Services	70 to 88
J	Public Administration	90 to 99
K	Unclassified	00

SIC Major Group

SIC Major Group represents the first two digits of the code for example, Major Group 80 refers to Health Services. Each Major Group represents a sector or industry group:

Major Group	Description	SIC Range
01	Agricultural Production Crops	0111 to 0191
02	Agricultural Production Livestock And Animal Specialties	0211 to 0291
07	Agricultural Services	0711 to 0783
08	Forestry	0811 to 0851
09	Fishing, Hunting, And Trapping	0911 to 0971
10	Metal Mining	1011 to 1099
12	Coal Mining	1221 to 1241
13	Oil And Gas Extraction	1311 to 1389
14	Mining And Quarrying Of Nonmetallic Minerals, Except Fuels	1411 to 1499
15	Building Construction General Contractors And Operative Builders	1521 to 1542
16	Heavy Construction Other Than Building Construction Contractors	1611 to 1629

Major Group	Description	SIC Range
17	Construction Special Trade Contractors	1711 to 1799
20	Food And Kindred Products	2011 to 2099
21	Tobacco Products	2111 to 2141
22	Textile Mill Products	2211 to 2299
23	Apparel And Other Finished Products Made From Fabrics And Similar Materials	2311 to 2399
24	Lumber And Wood Products, Except Furniture	2411 to 2499
25	Furniture And Fixtures	2511 to 2599
26	Paper And Allied Products	2611 to 2679
27	Printing, Publishing, And Allied Industries	2711 to 2796
28	Chemicals And Allied Products	2812 to 2899
29	Petroleum Refining And Related Industries	2911 to 2999
30	Rubber And Miscellaneous Plastics Products	3011 to 3089
31	Leather And Leather Products	3111 to 3199
32	Stone, Clay, Glass, And Concrete Products	3211 to 3299
33	Primary Metal Industries	3312 to 3399
34	Fabricated Metal Products, Except Machinery And Transportation Equipment	3411 to 3499
35	Industrial And Commercial Machinery And Computer Equipment	3511 to 3599
36	Electronic And Other Electrical Equipment And Components, Except Computer Equipment	3612 to 3699
37	Transportation Equipment	3711 to 3799
38	Measuring, Analyzing, And Controlling Instruments; Photographic, Medical And Optical Goods; Watches And Clocks	3812 to 3873
39	Miscellaneous Manufacturing Industries	3911 to 3999
40	Major Group 40: Railroad Transportation	4011 to 4013
41	Local And Suburban Transit And Interurban Highway Passenger Transportation	4111 to 4173
42	Motor Freight Transportation And Warehousing	4212 to 4231
43	United States Postal Service	4311 to 4311
44	Water Transportation	4412 to 4499
45	Transportation By Air	4512 to 4581
46	Pipelines, Except Natural Gas	4612 to 4619
47	Transportation Services	4724 to 4789
48	Communications	4812 to 4899
49	Electric, Gas, And Sanitary Services	4911 to 4971
50	Wholesale Trade-durable Goods	5012 to 5099
51	Wholesale Trade-non-durable Goods	5111 to 5199
52	Building Materials, Hardware, Garden Supply, And Mobile Home Dealers	5211 to 5271
53	General Merchandise Stores	5311 to 5399
54	Food Stores	5411 to 5499
55	Automotive Dealers And Gasoline Service Stations	5511 to 5599
56	Apparel And Accessory Stores	5611 to 5699
57	Home Furniture, Furnishings, And Equipment Stores	5712 to 5736
58	Eating And Drinking Places	5812 to 5813
59	Miscellaneous Retail	5912 to 5999
60	Depository Institutions	6011 to 6099

Major Group	Description	SIC Range
61	Non-depository Credit Institutions	6111 to 6163
62	Security And Commodity Brokers, Dealers, Exchanges, And Services	6211 to 6289
63	Insurance Carriers	6311 to 6399
64	Insurance Agents, Brokers, And Service	6411 to 6411
65	Real Estate	6512 to 6553
67	Holding And Other Investment Offices	6712 to 6799
70	Hotels, Rooming Houses, Camps, And Other Lodging Places	7011 to 7041
72	Personal Services	7211 to 7299
73	Business Services	7311 to 7389
75	Automotive Repair, Services, And Parking	7513 to 7549
76	Miscellaneous Repair Services	7622 to 7699
78	Motion Pictures	7812 to 7841
79	Amusement And Recreation Services	7911 to 7999
80	Health Services	8011 to 8099
81	Legal Services	8111 to 8111
82	Educational Services	8211 to 8299
83	Social Services	8322 to 8399
84	Museums, Art Galleries, And Botanical And Zoological Gardens	8412 to 8422
86	Membership Organizations	8611 to 8699
87	Engineering, Accounting, Research, Management, And Related Services	8711 to 8748
88	Private Households	8811 to 8811
91	Executive, Legislative, And General Government, Except Finance	9111 to 9199
92	Justice, Public Order, And Safety	9111 to 9229
93	Public Finance, Taxation, And Monetary Policy	9311 to 9311
94	Administration Of Human Resource Programs	9411 to 9451
95	Administration Of Environmental Quality And Housing Programs	9511 to 9532
96	Administration Of Economic Programs	9611 to 9661
97	National Security And International Affairs	9711 to 9721
99	No classifiable Establishments	9999 to 9999
00	Unclassified	0000 to 0000

SIC Code

SIC Code represents the four digits of the code, for example SIC Code 5431 refers to Fruit and Vegetable Markets. Each SIC Code represents specific products or services for a business:

SIC Code	Description of SIC Code
0134	Irish Potatoes
0161	Vegetables And Melons
0171	Berry Crops
0175	Deciduous Tree Fruits
0181	Ornamental Floriculture And Nursery Products
0182	Food Crops Grown Under Cover
0191	General Farms Primarily Crop
0211	Beef Cattle Feedlots
0212	Beef Cattle Except Feedlots
0219	General Livestock Nec

SIC Code	Description of SIC Code
0254	Poultry Hatcheries
0259	Poultry And Eggs Nec
0271	Fur-bearing Animals And Rabbits
0272	Horses And Other Equines
0273	Animal Aquaculture
0279	Animal Specialties Nec
0721	Crop Planting And Protection
0723	Crop Preparation Services For Market
0742	Veterinary Services For Animal Specialties
0751	Livestock Services Exc. Veterinary
0752	Animal Specialty Services
0761	Farm Labor Contractors
0762	Farm Management Services
0781	Landscape Counseling And Planning
0782	Lawn And Garden Services
0783	Ornamental Shrub And Tree Services
0811	Timber Tracts
0831	Forest Nurseries And Gathering Of Forest Products
0851	Forestry Services
0912	Finfish
0913	Shellfish
0919	Miscellaneous Marine Products
0921	Fish Hatcheries And Preserves
0971	Hunting Trapping Game Propagation
1000	Mining
1011	Iron Ores
1041	Gold Ores
1081	Metal Mining Services
1221	Bituminous Coal And Lignite Surface Mining
1311	Crude Petroleum And Natural Gas
1381	Drilling Oil And Gas Wells
1382	Oil And Gas Exploration Services
1389	Oil And Gas Field Services Nec
1411	Dimension Stone
1422	Crushed And Broken Limestone
1423	Crushed And Broken Granite
1429	Crushed And Broken Stone Nec
1442	Construction Sand And Gravel
1499	Nonmetallic Minerals Nec
1521	Single-family Housing Construction
1541	Industrial Buildings And Warehouses
1542	Nonresidential Construction Nec
1611	Highway And Street Construction
1622	Bridge Tunnel And Elevated Highway
1623	Water Sewer And Utility Lines
1629	Heavy Construction Nec
1711	Plumbing Heating Air Conditioning

SIC Code	Description of SIC Code
1721	Painting And Paper Hanging
1731	Electrical Work
1741	Masonry And Other Stonework
1742	Plastering Dry Wall And Insulation
1743	Terrazzo Tile Marble Mosaic Work
1751	Carpentry Work
1752	Floor Laying And Floor Work Nec
1761	Roofing Siding And Sheet Metal Work
1771	Concrete Work
1781	Water Well Drilling
1791	Structural Steel Erection
1793	Glass And Glazing Work
1794	Excavation Work
1795	Wrecking And Demolition Work
1796	Installing Building Equipment Nec
1799	Special Trade Contractors Nec
2011	Meat Packing Plants
2013	Sausages And Other Prepared Meats
2021	Creamery Butter
2022	Cheese Natural And Processed
2023	Dry Condensed And Evaporated Milk
2024	Ice Cream And Frozen Desserts
2026	Fluid Milk
2032	Canned Specialties
2033	Canned Fruits Vegetables Preserves Jams And Jellies
2034	Dehydrated Fruits Vegetables Soups
2035	Pickles Sauces And Salad Dressings
2037	Frozen Fruits Juices And Vegetables
2041	Flour And Other Grain Mill Products
2043	Cereal Breakfast Foods
2044	Rice Milling
2045	Blended And Prepared Flour
2046	Wet Corn Milling
2047	Dog And Cat Food
2048	Prepared Feeds Nec
2051	Bread Cake And Related Products
2052	Cookies And Crackers
2062	Cane Sugar Refining
2064	Candy And Other Confectionery Products
2066	Chocolate And Cocoa Products
2067	Chewing Gum
2075	Soybean Oil Mills
2077	Animal And Marine Fats And Oils
2079	Shortening And Cooking Oils
2082	Malt Beverages
2083	Malt
2084	Wines Brandy And Brandy Spirits

SIC Code	Description of SIC Code
2085	Distilled And Blended Liquors
2086	Bottled And Canned Soft Drinks
2087	Flavoring Extracts And Syrups Nec
2091	Canned And Cured Fish And Seafoods
2092	Fresh Or Frozen Packaged Fish
2096	Potato Chips Corn Chips And Similar Snacks
2097	Manufactured Ice
2099	Food Preparations Nec
2111	Cigarettes
2211	Weaving Mills Cotton
2221	Weaving Mills Synthetic Fibres
2231	Weaving And Finishing Mills Wool
2241	Narrow Fabric Mills
2251	Women's Hosiery Except Socks
2253	Knit Outerwear Mills
2257	Circular Knit Fabric Mills
2258	Warp Knit Fabric Mills
2269	Finishing Plants Nec
2273	Carpets And Rugs
2281	Yarn Spinning Mills
2295	Coated Fabrics Not Rubberized
2297	Nonwoven Fabrics
2298	Cordage And Twine
2299	Textile Goods Nec
2311	Men's And Boys' Suits And Coats
2321	Men's And Boys' Shirts
2322	Men's And Boys' Underwear And Nightwear
2323	Men's And Boys' Neckwear
2325	Men's And Boys' Separate Trousers
2326	Men's And Boys' Work Clothing
2329	Men's And Boys' Clothing Nec
2331	Women's And Misses' Blouses And Waists
2335	Women's And Misses' Dresses
2337	Women's And Misses' Suits And Coats
2339	Women's And Misses' Outerwear Nec
2341	Women's And Children's Underwear And Nightwear
2342	Brassieres And Allied Garments
2353	Hats Caps And Millinery
2361	Girls' And Children's Dresses And Blouses
2371	Fur Goods
2381	Fabric Dress And Work Gloves
2385	Waterproof Outerwear
2386	Leather And Sheep Lined Clothing
2387	Apparel Belts
2389	Apparel And Accessories Nec
2391	Curtains And Draperies
2392	House Furnishings Nec

SIC Code	Description of SIC Code
2393	Textile Bags
2394	Canvas And Related Products
2395	Pleating And Stitching
2396	Automotive And Apparel Trimmings
2399	Fabricated Textile Products Nec
2411	Logging
2421	Sawmills And Planing Mills General
2426	Hardwood Dimension And Flooring
2429	Special Product Sawmills Nec
2431	Millwork
2435	Hardwood Veneer And Plywood
2439	Structural Wood Members Nec
2441	Nailed Wood Boxes And Shook
2448	Wood Pallets And Skids
2451	Mobile Homes
2452	Prefabricated Wood Buildings
2491	Wood Preserving
2493	Reconstituted Wood Products
2499	Wood Products Nec
2511	Wood Household Furniture
2515	Mattresses Foundations And Convertible Beds
2522	Metal Office Furniture
2531	Public Building And Related Furniture
2541	Wood Partitions And Fixtures
2542	Metal Partitions And Fixtures
2591	Drapery Hardware And Blinds And Shades
2599	Furniture And Fixtures Nec
2611	Pulp Mills
2621	Paper Mills
2631	Paperboard Mills
2652	Set-up Paperboard Boxes
2653	Corrugated And Solid Fiber Boxes
2655	Fiber Cans Drums And Similar Products
2657	Folding Paperboard Boxes
2672	Coated And Laminated Paper Nec
2673	Plastics Foil And Coated Paper Bags
2674	Uncoated Paper And Multiwall Bags
2676	Sanitary Paper Products
2677	Envelopes
2678	Stationery Tablets And Related Products
2679	Converted Paper And Paperboard Products Nec
2711	Newspapers
2721	Periodicals
2731	Book Publishing
2741	Miscellaneous Publishing
2752	Commercial Printing Lithographic
2754	Commercial Printing Gravure

SIC Code	Description of SIC Code
2759	Commercial Printing Nec
2761	Manifold Business Forms
2771	Greeting Cards
2782	Blankbooks And Looseleaf Binders
2789	Bookbinding And Related Work
2791	Typesetting
2796	Platemaking And Related Services
2812	Alkalies And Chlorine
2813	Industrial Gases
2816	Inorganic Pigments
2819	Industrial Inorganic Chemicals Nec
2821	Plastics Materials And Resins
2822	Synthetic Rubber
2833	Medicinal Chemicals And Botanical Products
2834	Pharmaceutical Preparations
2842	Polishes And Sanitation Goods
2844	Toilet Preparations
2851	Paints And Allied Products
2861	Gum And Wood Chemicals
2865	Cyclic Crudes And Intermediates
2869	Industrial Organic Chemicals Nec
2873	Nitrogenous Fertilizers
2879	Pesticides And Agricultural Chemicals Nec
2891	Adhesives And Sealants
2892	Explosives
2893	Printing Ink
2899	Chemical Preparations Nec
2911	Petroleum Refining
2951	Asphalt Paving Mixtures And Blocks
2992	Lubricating Oils And Greases
2999	Petroleum And Coal Products Nec
3011	Tires And Inner Tubes
3021	Rubber And Plastics Footwear
3052	Rubber And Plastic Hose And Belting
3053	Gaskets Packing And Sealing Devices
3061	Molded Extruded And Lathe-Cut Mechanical Rubber Products
3069	Fabricated Rubber Products Nec
3081	Unsupported Plastics Film And Sheet
3083	Laminated Plastics Plate Sheet And Profile Shapes
3084	Plastics Pipe
3086	Plastics Foam Products
3088	Plastics Plumbing Fixtures
3089	Plastics Products Nec
3111	Leather Tanning And Finishing
3131	Footwear Cut Stock
3161	Luggage
3171	Women's Handbags And Purses

SIC Code	Description of SIC Code
3172	Personal Leather Goods Nec
3199	Leather Goods Nec
3221	Glass Containers
3229	Pressed And Blown Glass Nec
3231	Products Of Purchased Glass
3241	Cement Hydraulic
3253	Ceramic Wall And Floor Tile
3255	Clay Refractories
3262	Vitreous China Table And Kitchen Articles
3269	Pottery Products Nec
3271	Concrete Block And Brick
3272	Concrete Products Nec
3273	Ready-mixed Concrete
3275	Gypsum Products
3281	Cut Stone And Stone Products
3291	Abrasive Products
3292	Asbestos Products
3296	Mineral Wool
3299	Nonmetallic Mineral Products Nec
3312	Blast Furnaces And Steel Mills
3315	Steel Wire And Related Products
3316	Cold Finishing Of Steel Shapes
3317	Steel Pipe And Tubes
3321	Gray Iron Foundries
3324	Steel Investment Foundries
3325	Steel Foundries Nec
3331	Primary Copper
3334	Primary Aluminum
3339	Primary Nonferrous Metals Nec
3341	Secondary Smelting And Refining Of Nonferrous Metals
3351	Copper Rolling And Drawing
3353	Aluminum Sheet Plate And Foil
3355	Aluminum Rolling And Drawing Nec
3356	Nonferrous Rolling And Drawing Nec
3364	Nonferrous Die-Castings Except Aluminum
3398	Metal Heat Treating
3399	Primary Metal Products Nec
3411	Metal Cans
3412	Metal Barrels Drums And Pails
3421	Cutlery
3423	Hand And Edge Tools Nec
3429	Hardware Nec
3431	Metal Sanitary Ware
3432	Plumbing Fittings And Brass Goods
3433	Heating Equipment Except Electric
3441	Fabricated Structural Metal
3442	Metal Doors Sash And Trim

SIC Code	Description of SIC Code
3443	Fabricated Plate Work (Boiler Shops)
3444	Sheet Metal Work
3446	Architectural Metal Work
3448	Prefabricated Metal Buildings
3449	Miscellaneous Metal Work
3451	Screw Machine Products
3452	Bolts Nuts Rivets And Washers
3462	Iron And Steel Forgings
3463	Nonferrous Forgings
3466	Crowns And Closures
3469	Metal Stampings Nec
3471	Plating And Polishing
3479	Coating Engraving And Allied Services
3484	Small Arms
3491	Industrial Valves
3492	Fluid Power Valves And Hose Fittings
3494	Valves And Pipe Fittings Nec
3495	Wire Springs
3496	Misc. Fabricated Wire Products
3498	Fabricated Pipe And Fittings
3499	Fabricated Metal Products Nec
3511	Turbines And Turbine Generator Sets
3519	Internal Combustion Engines Nec
3523	Farm Machinery And Equipment
3531	Construction Machinery
3533	Oil And Gas Field Machinery
3535	Conveyors And Conveying Equipment
3536	Hoists Cranes And Monorails
3537	Industrial Trucks And Tractors
3541	Machine Tools Metal Cutting Types
3542	Machine Tools Metal Forming Types
3543	Industrial Patterns
3544	Special Dies Tools Jigs And Fixtures
3545	Machine Tool Accessories
3546	Power Driven Hand Tools
3548	Welding Equipment
3549	Metalworking Machinery Nec
3552	Textile Machinery
3553	Woodworking Machinery
3554	Paper Industries Machinery
3555	Printing Trades Machinery
3556	Food Products Machinery
3559	Special Industry Machinery Nec
3564	Blowers And Fans
3565	Packaging Machinery
3566	Speed Changers Drives And Gears
3567	Industrial Furnaces And Ovens

SIC Code	Description of SIC Code
3568	Power Transmission Equipment Nec
3569	General Industrial Machinery Nec
3571	Electronic Computers
3577	Computer Peripheral Equipment Nec
3579	Office Machines Nec
3581	Automatic Vending Machines
3582	Commercial Laundry Equipment
3585	Refrigeration And Heating Equipment
3589	Service Industry Machinery Nec
3599	Machinery Except Electrical Nec
3612	Transformers
3613	Switchgear And Switchboard Apparatus
3621	Motors And Generators
3624	Carbon And Graphite Products
3625	Relays And Industrial Controls
3629	Electrical Industrial Apparatus Nec
3631	Household Cooking Equipment
3632	Household Refrigerators And Freezers
3633	Household Laundry Equipment
3634	Electric Housewares And Fans
3635	Household Vacuum Cleaners
3639	Household Appliances Nec
3641	Electric Lamps Bulbs And Tubes
3643	Current-carrying Wiring Devices
3644	Noncurrent-carrying Wiring Devices
3645	Residential Lighting Fixtures
3646	Commercial Lighting Fixtures
3648	Lighting Equipment Nec
3652	Phonograph Records And Prerecorded Audio Tapes And Disks
3661	Telephone And Telegraph Apparatus
3663	Radio And TV Broadcasting Equipment
3669	Communications Equipment Nec
3672	Printed Circuit Boards
3674	Semiconductors And Related Devices
3675	Electronic Capacitors
3676	Electronic Resistors
3679	Electronic Components Nec
3694	Engine Electrical Equipment
3695	Magnetic And Optical Recording Media
3699	Electrical Equipment And Supplies Nec
3711	Motor Vehicles And Car Bodies
3713	Truck And Bus Bodies
3714	Motor Vehicle Parts And Accessories
3715	Truck Trailers
3721	Aircraft
3724	Aircraft Engines And Engine Parts
3728	Aircraft Equipment Nec

SIC Code	Description of SIC Code
3731	Ship Building And Repairing
3732	Boat Building And Repairing
3743	Railroad Equipment
3751	Motorcycles Bicycles And Parts
3769	Space Vehicle Equipment Nec
3792	Travel Trailers And Campers
3799	Transportation Equipment Nec
3812	Search And Navigation Equipment
3822	Environmental Controls
3823	Process Control Instruments
3824	Fluid Meters And Counting Devices
3825	Instruments To Measure Electricity
3827	Optical Instruments And Lenses
3829	Measuring And Controlling Devices Nec
3842	Surgical Appliances And Supplies
3844	X-Ray Apparatus And Tubes
3845	Electromedical Apparatus
3851	Ophthalmic Goods
3861	Photographic Equipment And Supplies
3873	Watches Clocks And Watchcases
3911	Jewelry Precious Metal
3914	Silverware and Plated Ware
3915	Jewelers' Materials And Lapidary Work
3931	Musical Instruments
3944	Games Toys And Children's Vehicles
3949	Sporting And Athletic Goods Nec
3951	Pens And Mechanical Pencils
3953	Marking Devices
3961	Costume Jewelry
3965	Fasteners Buttons Needles And Pins
3991	Brooms And Brushes
3993	Signs And Advertising Displays
3995	Burial Caskets
3996	Hard Surface Floor Coverings
3999	Manufacturing Industries Nec
4011	Railroads Line-haul Operating
4111	Local And Suburban Transit
4119	Local Passenger Transportation Nec
4121	Taxicabs
4131	Intercity Highway Transportation
4142	Charter Service Except Local
4212	Local Trucking Without Storage
4213	Trucking Except Local
4214	Local Trucking And Storage
4215	Courier Services Except By Air
4221	Farm Product Warehousing And Storage
4222	Refrigerated Warehousing

SIC Code	Description of SIC Code
4225	General Warehousing And Storage
4226	Special Warehousing And Storage Nec
4311	Canadian Postal Service
4412	Deep Sea Foreign Transportation Of Freight
4449	Water Transportation Of Freight Nec
4482	Ferries
4489	Water Transportation Of Passengers Nec
4491	Marine Cargo Handling
4492	Towing and Tugboat Services
4493	Marinas
4499	Water Transportation Services Nec
4512	Air Transportation Scheduled
4513	Air Courier Services
4522	Air Transportation Nonscheduled
4581	Airports Flying Fields And Airport Terminal Services
4619	Pipelines Nec
4724	Travel Agencies
4725	Tour Operators
4729	Arrangement Of Passenger Transportation Nec
4731	Arrangement Of Transportation Of Freight And Cargo
4741	Rental Of Railroad Cars
4783	Packing And Crating
4785	Inspection And Weighing Services For Motor Vehicles
4812	Radiotelephone Communications
4813	Telephone Communications Except Radiotelephone
4822	Telegraph And Other Message Communications
4832	Radio Broadcasting
4833	Television Broadcasting
4841	Cable And Other Pay Television Services
4899	Communications Services Nec
4911	Electric Services
4925	Gas Production And/Or Distribution
4941	Water Supply
4953	Refuse Systems
4959	Sanitary Services Nec
4961	Steam Supply
5012	Automobiles And Other Motor Vehicles
5013	Automotive Parts And Supplies
5014	Tires And Tubes
5015	Motor Vehicles Parts Used
5021	Furniture
5023	Home Furnishings
5031	Lumber Plywood And Millwork
5032	Brick Stone And Related Construction Materials
5033	Roofing Siding And Insulation Materials
5039	Construction Materials Nec
5043	Photographic Equipment And Supplies

SIC Code	Description of SIC Code
5044	Office Equipment
5045	Computer Equipment And Software
5046	Commercial Equipment Nec
5047	Medical Dental And Hospital Equipment And Supplies
5048	Ophthalmic Goods
5049	Professional Equipment Nec
5051	Metals Service Centers And Offices
5052	Coal And Other Minerals And Ores
5063	Electrical Apparatus And Equipment
5064	Electrical Appliances TV And Radios
5065	Electronic Parts And Equipment
5072	Hardware
5074	Plumbing And Hydronic Heating Supplies
5075	Warm Air Heating And Air Conditioning
5078	Refrigeration Equipment And Supplies
5082	Construction And Mining Machinery
5083	Farm And Garden Machinery And Equipment
5084	Industrial Machinery And Equipment
5085	Industrial Supplies
5087	Service Establishment Equipment And Supplies
5088	Transportation Equipment And Supplies
5091	Sporting And Recreational Goods And Supplies
5092	Toys And Hobby Goods And Supplies
5093	Scrap And Waste Materials
5094	Jewelry Watches And Precious Stones
5099	Durable Goods Nec
5111	Printing And Writing Paper
5112	Stationery And Office Supplies
5113	Industrial And Personal Service Paper
5122	Drugs Proprietaries And Sundries
5131	Piece Goods Notions And Other Dry Goods
5137	Women's And Children's Clothing
5139	Footwear
5141	Groceries General Line
5142	Packaged Frozen Foods
5143	Dairy Products
5144	Poultry And Poultry Products
5145	Confectionery
5146	Fish And Seafoods
5147	Meats And Meat Products
5148	Fresh Fruits and Vegetables
5149	Groceries And Related Products Nec
5153	Grain And Field Beans
5154	Livestock
5159	Farm-product Raw Materials Nec
5162	Plastics Materials And Basic Forms And Shapes
5169	Chemicals And Allied Products Nec

SIC Code	Description of SIC Code
5172	Petroleum Products Nec
5182	Wines And Distilled Beverages
5191	Farm Supplies
5192	Books Periodicals And Newspapers
5193	Flowers Nursery Stock And Florists' Supplies
5194	Tobacco And Tobacco Products
5199	Nondurable Goods Nec
5211	Lumber And Other Building Materials
5231	Paint Glass And Wallpaper Stores
5251	Hardware Stores
5261	Retail Nurseries And Garden Stores
5271	Mobile Home Dealers
5311	Department Stores
5331	Variety Stores
5399	Misc. General Merchandise Stores
5411	Grocery Stores
5421	Meat And Fish Markets
5431	Fruit And Vegetable Markets
5441	Candy Nut And Confectionery Stores
5451	Dairy Products Stores
5461	Retail Bakeries
5499	Miscellaneous Food Stores
5511	New Car Dealers
5521	Used Car Dealers
5531	Auto And Home Supply Stores
5541	Gasoline Service Stations
5541	Gasoline Service Stations
5551	Boat Dealers
5561	Recreational Vehicles Dealers
5571	Motorcycle Dealers
5599	Automotive Dealers Nec
5611	Men's And Boys' Clothing And Furnishings
5621	Women's Clothing Stores
5632	Women's Accessory And Specialty Stores
5641	Children's And Infants' Wear Stores
5651	Family Clothing Stores
5661	Shoe Stores
5699	Miscellaneous Apparel And Accessories
5712	Furniture Stores
5713	Floor Covering Stores
5714	Draperies And Upholstery Stores
5719	Misc. Home Furnishings Stores
5722	Household Appliance Stores
5731	Radio Television And Consumer Electronics Stores
5734	Computer And Computer Software Stores
5735	Record And Pre Recorded Tape Stores
5736	Musical Instrument Stores

SIC Code	Description of SIC Code
5812	Eating Places
5813	Drinking Places
5912	Drug Stores And Proprietary Stores
5921	Liquor Stores
5932	Used Merchandise Stores
5941	Sporting Goods And Bicycle Shops
5942	Book Stores
5943	Stationery Stores
5944	Jewelry Stores
5945	Hobby Toy And Game Shops
5946	Camera And Photographic Supply Stores
5947	Gift Novelty And Souvenir Shops
5948	Luggage And Leather Goods Stores
5949	Sewing Needlework And Piece Goods
5961	Catalog And Mail Order Houses
5962	Automatic Merchandising Machine Operators
5963	Direct Selling Organizations
5984	Liquefied Petroleum Gas Dealers
5989	Fuel Dealers Nec
5992	Florists
5993	Tobacco Stores And Stands
5994	News Dealers And Newsstands
5995	Optical Goods Stores
5999	Miscellaneous Retail Stores Nec
6011	Federal Reserve Banks
6021	National Commercial Banks
6022	State Commercial Banks
6061	Credit Unions Federally Chartered
6062	Credit Unions Not Federally Chartered
6099	Functions Related To Depository Banking Nec
6141	Personal Credit Institutions
6153	Short-term Business Credit
6159	Misc. Business Credit Institutions
6162	Mortgage Bankers And Correspondents
6211	Security Brokers And Dealers
6221	Commodity Contracts Brokers Dealers
6231	Security And Commodity Exchanges
6282	Investment Advice
6289	Services Allied With The Exchange Of Securities Or Commodities Nec
6311	Life Insurance
6324	Hospital And Medical Service Plans
6331	Fire Marine And Casualty Insurance
6351	Surety Insurance
6371	Pension Health And Welfare Funds
6399	Insurance Carriers Nec
6411	Insurance Agents Brokers And Service
6512	Nonresidential Building Operators

SIC Code	Description of SIC Code
6513	Apartment Building Operators
6515	Mobile Home Site Operators
6531	Real Estate Agents And Managers
6541	Title Abstract Offices
6552	Land Subdividers And Developers Except Cemeteries
6553	Cemetery Subdividers And Developers
6719	Holding Companies Nec
6732	Educational Religious Etc. Trusts
6733	Trusts Nec
6792	Oil Royalty Traders
6794	Patent Owners And Lessors
6798	Real Estate Investment Trusts
6799	Investors Nec
7011	Hotels And Motels
7021	Rooming And Boarding Houses
7032	Sporting And Recreational Camps
7033	Recreational Vehicle Parks And Campsites
7200	Personal Services
7211	Power Laundries Family And Commercial
7212	Garment Pressing And Cleaners' Agents
7213	Linen Supply
7215	Coin-operated Laundries And Cleaning
7216	Dry Cleaning Plants Except Rug
7217	Carpet And Upholstery Cleaning
7219	Laundry And Garment Services Nec
7221	Photographic Studios Portrait
7231	Beauty Shops
7241	Barber Shops
7251	Shoe Repair Shops And Shoeshine Parlors
7261	Funeral Service And Crematories
7291	Tax Return Preparation Service
7299	Miscellaneous Personal Services Nec
7311	Advertising Agencies
7312	Outdoor Advertising Services
7313	Radio TV Publisher Representatives
7319	Advertising Nec
7322	Adjustment And Collection Services
7323	Credit Reporting Services
7331	Direct Mail Advertising Services
7334	Photocopying And Duplicating Service
7335	Commercial Photography
7336	Commercial Art And Graphic Design
7338	Secretarial And Court Reporting Services
7342	Disinfecting And Pest Control Services
7349	Building Maintenance Services Nec
7352	Medical Equipment Rental And Leasing
7353	Heavy Construction Equipment Rental And Leasing

SIC Code	Description of SIC Code
7359	Equipment Rental And Leasing Nec
7361	Employment Agencies
7363	Help Supply Services
7371	Computer Programming Services
7372	Computer Programming And Software
7373	Computer Integrated Systems Design
7374	Data Processing Services
7375	Information Retrieval Services
7376	Computer Facilities Management Services
7377	Computer Rental And Leasing
7378	Computer Maintenance And Repair
7379	Computer Related Services Nec
7381	Detective Guard And Armored Car Service
7382	Security Systems Services
7383	News Syndicates
7384	Photofinishing Laboratories
7389	Business Services Nec
7513	Truck Rental And Leasing Without Drivers
7514	Passenger Car Rental
7515	Passenger Car Leasing
7519	Recreation Vehicle And Trailer Rental
7521	Automobile Parking
7532	Top Body Upholstery Repair Shops And Paint Shops
7533	Automotive Exhaust System Repair Shops
7534	Tire Retreading And Repair Shops
7536	Automotive Glass Replacement Shops
7537	Automotive Transmission Repair Shops
7538	General Automotive Repair Shops
7539	Automotive Repair Shops Nec
7542	Car Washes
7549	Automotive Services Nec
7622	Radio And Television Repair
7623	Refrigeration Service And Repair
7629	Electrical Repair Shops Nec
7631	Watch Clock And Jewelry Repair
7641	Reupholstery And Furniture Repair
7692	Welding Repair
7694	Armature Rewinding Shops
7699	Repair Services Nec
7812	Motion Picture And Video Tape Production
7819	Services Allied To Motion Picture Production
7822	Motion Picture And Video Tape Distribution
7832	Motion Picture Theaters Ex Drive-in
7833	Drive-in Motion Picture Theaters
7841	Video Tape Rental
7911	Dance Studios Schools And Halls
7922	Theatrical Producers And Services

SIC Code	Description of SIC Code
7929	Entertainers And Entertainment Groups
7933	Bowling Centers
7941	Professional Sports Clubs And Promoters
7948	Racing Including Track Operation
7991	Physical Fitness Facilities
7992	Public Golf Courses
7993	Coin-operated Amusement Devices
7997	Membership Sports And Recreation Clubs
7999	Amusement And Recreation Nec
8011	Offices And Clinics Of Physicians
8021	Offices And Clinics Of Dentists
8031	Offices Of Osteopathic Physicians
8041	Offices Of Chiropractors
8042	Offices Of Optometrists
8043	Offices Of Podiatrists
8049	Offices Of Health Practitioners Nec
8059	Nursing And Personal Care Nec
8062	General Medical And Surgical Hospitals
8063	Psychiatric Hospitals
8069	Specialty Hospitals Exc Psychiatric
8071	Medical Laboratories
8072	Dental Laboratories
8082	Home Health Care Services
8093	Specialty Outpatient Facilities Nec
8099	Health And Allied Services Nec
8111	Legal Services
8211	Elementary And Secondary Schools
8221	Colleges And Universities
8231	Libraries
8243	Data Processing Schools
8244	Business And Secretarial Schools
8249	Vocational Schools Nec
8299	Schools And Educational Services Nec
8322	Individual And Family Social Services
8331	Job Training And Related Services
8331	Job Training and Vocational Rehabilitation Services
8351	Child Day Care Services
8361	Residential Care
8399	Social Services Nec
8412	Museums And Art Galleries
8422	Botanical And Zoological Gardens
8611	Business Associations
8621	Professional Organizations
8631	Labor Organizations
8641	Civic And Social Associations
8651	Political Organizations
8661	Religious Organizations

SIC Code	Description of SIC Code
8699	Membership Organizations Nec
8711	Engineering Services
8712	Architectural Services
8713	Surveying Services
8721	Accounting Auditing And Bookkeeping Services
8731	Commercial Physical And Biological Research
8732	Commercial Economic Sociological And Educational Research
8733	Non Commercial Research Organizations
8734	Testing Laboratories
8741	Management Services
8742	Management Consulting Services
8743	Public Relations Services
8748	Business Consulting Services Nec
8811	Private Households
8999	Services Nec
9111	Government Of Canada
9211	Government Of Newfoundland
9212	Government Of Prince Edward Island
9213	Government Of Nova Scotia
9214	Government Of New Brunswick
9221	Police Protection
9224	Government Of Québec
9235	Government Of Ontario
9246	Government Of Manitoba
9247	Government Of Saskatchewan
9248	Government Of Alberta
9259	Government Of British Columbia
9262	Government Of Northwest Territories
9263	Government Of Nunavut
9311	Municipalities And Urban Communities
9312	City Of Montréal
9721	International Affairs
9999	Unclassified

Appendix E: Border Crossings and Customs Offices

More information regarding border crossings can be obtained from the www.ccra-adrc.gc.ca (Memorandum D-1-1-1, Locator Code: 233B) from Canada Customs and Revenue Agency (CCRA).

The following information is sourced directly from the CCRA website and provides definitions and explanations of the data contained in the Border Crossings and Customs (bor) look up table:

Explanation of Columns

2. The detailed office information is presented in an eight-column table that follows a standardized pattern with some exceptions.

Port No. (Column 1)

3. The number in the first column of the table indicates the office number or port number as specified in the Accelerated Commercial Release Operations Support System (ACROSS). Offices that have a number in the first column and nothing in the second column are **independent offices**, and they do not report through any other office or location.

4. Locations that have a number in both the first and second column are **subordinate offices** that generally process their transactions through another office. An Inland Alternate Service (IAS) site reports to an independent office called a hub. Subordinate offices have their number in the first column and the number and name of the office they report to in the second column.

Note: Transactions may be processed using either number, depending on local preferences.

5. **Service sites** such as sufferance warehouses and marinas usually do not have a distinct number. They process all their transactions using an independent office number.

Reports to Office (Column 2)

6. This column presents the number and name of the independent office through which subordinate offices or service sites process their transactions.

Customs Office (Column 3)

7. The third column contains the name, and where applicable, the address and telephone numbers of the office or site. Customs offices and service sites include actual staffed customs offices, airports, vessel clearance terminals, offices that are serviced by staff from another location, sufferance warehouses, and CANPASS locations. Not all locations or facilities provide all services, and some facilities may be restricted to certain types of traffic or classes of goods. Offices names followed by "IAS" indicate that they have been designated as an area that is serviced through the Inland Alternate Service program.

Hierarchy of Offices and Sites

8. In general, each region is divided into an individual appendix and then sub-divided into districts within that appendix. (Note: Southern Ontario has recently been reorganized as one region with three separate divisions. For formatting purposes only, this document treats each division as if it were a separate region, resulting in a separate appendix for Southern Ontario (Inland), Southern Ontario (Niagara/Fort Erie), and Southern Ontario (Windsor/St. Clair)). Wherever possible, the primary or independent offices are listed in numerical order with their subordinate offices and service sites listed immediately after them. As a result of this, some subordinate offices may initially appear to be out of numerical order. However, they are actually in their appropriate place under the primary or the hub through which they process their transactions.

9. Finally, a third level of sorting has been applied to the information provided in column 3. Having been first grouped by the independent office number and then the subordinate office numbers in columns 1 and 2, the various offices and sites are prioritized according to the type of function or service they provide.

10. The general categories are, in descending order:

- (a) independent office and subordinate offices;
- (b) airports;
- (c) marine facilities;
- (d) rail stations and depots;
- (e) warehouses; and
- (f) CANPASS service sites.

Hours of Service (Columns 4 and 5)

11. The hours of service indicate the hours that have been officially designated as the times when the customs office is normally open for business. Locations that are listed as being open 24 hours per day, 7 days a week may not provide all services during the entire 24-hour period. For example, some offices may provide full release and accounting services during the day shift, Monday to Friday, but may not have full accounting services available during the evenings or weekends. Clients are encouraged to verify hours of operation with their local offices. Requests for new or expanded services, or services outside the normal business hours, may be subject to cost recovery or special service charges.

12. Further information about the authorized hours of service at customs offices may be obtained by referring to Memorandum D1-2-1, Special Services.

Services (Column 6)

13. The symbols shown in column 6 indicate the specific services or activities available at the customs office or service site. The definitions are not necessarily all-inclusive and should be used as a guide only.

HWY - Land and Inland Border Office - authorized port of entry at which passenger, general public, or commercial highway traffic is permitted to report. Land borders include both CANADA/U.S. border crossing points and inland border points.

EDI - Electronic Data Interchange - the transmission, transfer, interchange, or electronic release of accounting data.

IAS - Inland Alternate Service - the provision of release services to inland locations from a hub.

COMMERCIAL - Designated Commercial Office - offices that provide commercial service free from the imposition of any special service charges on a 7 day/24 hour basis.

IMM - Immigration - an immigration officer is on site.

NTO - Non-Terminal Office - office is not equipped with a computer communication system.

POST - International Mail Centre - office at which the processing of international mail or the control of outstanding postal accounts occurs.

AERO-INTL - International Airport - authorized customs airport of entry and exit for clearance of all classes of air traffic (Airport of Entry Designator Code AOE-A - see Memorandum D2-5-1, Charter Access to Airports).

AERO-REG - Regional Airport - authorized customs airport of entry and exit for clearance of commercial air traffic carrying freight or a passenger load not exceeding the capacity limits specified (Airport of Entry Designator Code AOE-R or AOE-RA - see Memorandum D2-5-1).

AERO-GEN - General Aviation Airport - authorized customs airport of entry and exit for general aviation air traffic, i.e., privately operated or small charter aircraft carrying no more than 15 passengers and their baggage (Airport of Entry Designator Code AOE-X or AOE-XA - see Memorandum D2-5-1).

SeaPI - Sea Plane Landing Site - authorized point of entry for sea planes.

C-Ves - Commercial Vessel Clearing Station - locations at which commercial vessels are permitted to report.

P-Ves - Private or Non-Commercial Vessel Reporting Station - locations at which non-commercial vessels (pleasure crafts) are permitted to report.

FERRY - Ferry Terminal - terminal where passengers and vehicles embark or disembark from a ferry.

CSO - Cruise Ship Operations - authorized debarkation site for cruise ship passengers and crew.

RAIL - Railway Depot - first point in Canada at which a passenger or freight train stops and discharges passengers or goods.

SWH - Warehouse - highway sufferance warehouses or special bonded warehouses for perishable goods.

Shop - Duty-Free Shop - a duty-free shop is located at the customs location. More specific duty-free shop details can be obtained from Memorandum D4-3-2, Duty Free Shop - Licensing.

ACEEO - locations at which acting Revenue Canada enforcement officers have been authorized.

CPO - Only the CANPASS programs are serviced at this location

CPA - CANPASS - Private and Corporate Aircraft

CPB - CANPASS - Private Boat

CPL - CANPASS - Voyageur

Note: All references to CANPASS programs, services, or sites refer to a CANPASS pilot project that was being tested at the time this document was released.

Airport or Vessel Code (Column 7)

14. This column identifies the airport designator code, the passenger capacity limits per flight for inspection services purposes, and the station responsible for flight plans. Further information regarding services provided at airports can be obtained from Memorandum D3-2-1, International Air Traffic, and Memorandum D2-5-1. Vessel registration office numbers are also included in this section.

Opposite U.S. Office (Column 8)

15. The U.S. customs office is opposite the Canadian customs office.

ADDITIONAL INFORMATION

16. All requests for revisions should be submitted to the following address:

Manager of Facilities and Services
Operational Policy and Coordination Directorate
Customs and Trade Administration Branch
Revenue Canada
15th floor
Sir Richard Scott Building
191 Laurier Avenue West
Ottawa ON K1A 0L5

Appendix F: Canadian Payments Association Classification

The Canadian Payments Association (CPA) developed a classification system, which divides the institutions belonging to the payments associations into three groups:

1. Banks
2. Credit Unions and Caisses Populaires
3. Trust Companies, Loan Companies, and Other Deposit-Taking Institutions.

In conjunction with this classification system, the Financial Institution layer includes a field called FIN_TYPE. The following is a listing of institution names, by their corresponding classification type, as they appear in the FIN_TYPE field:

Banks

AMEX Bank of Canada	Habib Canadian Bank
AMICUS Bank	HSBC Bank Canada
Bank of America Canada	ING Bank of Canada
Bank of Canada	International Commercial Bank of Cathay
Bank of China	Intesabci Canada
Bank of East Asia (Canada)	JP Morgan Bank Canada
Bank of Montreal	JP Morgan Chase Bank
Bank of Nova Scotia	Korea Exchange Bank of Canada
Bank of Tokyo Mitsubishi (Canada)	Manulife Bank of Canada
Bank One NA	MBNA Canada Bank
Banque Laurentienne du Canada	Mellon Bank Canada
Banque Nationale du Canada	Mizuho Bank (Canada)
BNP Paribas (Canada)	National Bank of Greece (Canada)
Canadian Imperial Bank of Commerce	Paribas Bank of Canada
Canadian Western Bank	Royal Bank of Canada
Capital One Bank (Canada Branch)	Sakura Bank (Canada)
Cho Hung Bank of Canada	Societe Generale (Canada)
Citibank Canada	Sottomayor Bank Canada
Citibank, NA	State Bank of India (Canada)
Citizens Bank of Canada	Sumitoma Mitsui Banking Corporation of Canada
Comerica Bank	Tokai Bank Canada
Credit Lyonnais Canada	Toronto-Dominion Bank, (The)
Credit Suisse First Boston Canada	UBS Bank Canada
CS Alterna Bank	UFJ Bank Canada
CTC Bank of Canada	United Overseas Bank (Canada)
Deutsche Bank (Canada)	
Dresdner Bank Canada	

Credit Unions and Caisses Populaires

Airline (Malton Credit Union)
 Alltrans Credit Union
 L'Alliance des caisses populaires de l'Ontario
 Brunswick Credit Union Federation Ltd.

CBC (Toronto) Credit Union Limited
 Civil Service Co-op Credit Society
 Co-operative Credit Society of Manitoba Limited
 Communication Technologies CR UN Ltd
 Confederation des caisses populaires et d'economie Desjardins du Quebec
 Credit Union Central Alberta Ltd
 Credit Union Central of British Columbia
 Credit Union Central of Nova Scotia
 Credit Union Central of Ontario Ltd
 Credit Union Central of Saskatchewan
 Duca Community Credit Union Ltd
 Dundalk District Credit Union Ltd
 Federation des Caisses Populaires Acadiennes Limitee, La
 Federation des Caisses Populaires de l'Ontario Inc, La
 Federation des Caisses Populaires du Manitoba Inc, La
 The Fire Department Employees Credit Union Ltd
 Goderich Community Credit Union Ltd
 Latvian Credit Union Limited
 North York Community Credit Union Limited
 Ontario Civil Services Credit Union Limited
 Polysar Lambton Credit Union Limited
 St Stanislaus-St Casimir's Polish Parishes Credit Union Limited

Trust Companies, Loan Companies, and Other Deposit-Taking Institutions

AGF Trust Company	Montreal Trust Company
Alberta Treasury Branches	Municipal Savings & Loan Corporation, The
B2B Trust	Municipal Trust Company, The
B.C. Community Financial Services Corporation	National Trust Company
Canada Trust Company, The	Peace Hills Trust Company
Citizens Trust Company	Promutuel Capital Trust Company Inc
Clarica Trust Company, The	Province of Ontario Savings Office
Effort Trust Company, The	Royal Trust Company, The
Evangeline Savings & Mortgage Co	Royal Trust Corporation of Canada
Family Trust Corporation	Settlers Savings and Mortgage Corp
Fuji Bank Canada	Sherbrooke Trust, Company
Granville Savings & Mortgage Corp	Societe D'Epargne St Bernard, La
Home Savings and Loan Corporation	Sun Life Financial Trust Inc
Household Trust Company	TD Trust Company
International Trust Company	Trimark Trust
Investors Group Trust Co. Ltd.	Trust General du Canada
MRS Trust Company	Trust General Inc
Mennonite Trust Ltd	Trust La Laurentienne

Appendix G: CPIC NATIONAL DIRECTORY

English Abbreviations and Definitions

A			
AB	ALBERTA	CIS	CRIME INDEX SECTION/CRIMINAL INVESTIGATION SECTION
ACC	ACCIDENT	CISA	CRIMINAL INTELLIGENCE SERVICE ALBERTA
ACC	ADMINISTRATION COMMUNICATIONS CENTRE	CISBC	CRIMINAL INTELLIGENCE SERVICE BRITISH COLUMBIA
ACIIS	AUTOMATED CRIMINAL INTELLIGENCE	CISC	CRIMINAL INTELLIGENCE SERVICE CANADA
	INFORMATION SYSTEM	CISM	CRIMINAL INTELLIGENCE SERVICE MANITOBA
ADMIN	ADMINISTRATION/ADMINISTRATIVE	CISN	CRIMINAL INTELLIGENCE SERVICE NEWFOUNDLAND
AE DIST	AVALON EAST DISTRICT	CISNB	CRIMINAL INTELLIGENCE SERVICE NEW BRUNSWICK
AIR	AIRPORT	CISNS	CRIMINAL INTELLIGENCE SERVICE NOVA SCOTIA
AMF	AIRPORT MAIL FACILITY	CISO	CRIMINAL INTELLIGENCE SERVICE ONTARIO
AMT	AREA MANAGEMENT TEAM	CISS	CRIMINAL INTELLIGENCE SERVICE SASKATCHEWAN
A&P	ADMINISTRATION & PERSONNEL		
ARU	ALTERNATE RESPONSE UNIT	CIU	CRIMINAL INTELLIGENCE UNIT
ATI	ACCESS TO INFORMATION	CIV	CIVIL/CIVILIAN
ATTF	AUTO THEFT TASK FORCE	CL	CIVIL LITIGATION
AVE	AVENUE	CLASS	CLASSIFICATION
B		CLEU	COORDINATED LAW ENFORCEMENT UNIT
BC	BRITISH COLUMBIA	C/M	CIVILIAN MEMBER
BLDG	BUILDING	CNI	CRIMINAL NAME INDEX
BLVD	BOULEVARD	CO	COMMANDING OFFICER
BNPP	BERESFORD/NIGADOO/PETIT-ROCHER/POINTE-VERTE	CO	COUNTY
BP DIST	BURIN PENINSULA DISTRICT	COB	CRIMINAL OPERATIONS BRANCH
BR	BRANCH	COMCENTRE	COMMUNICATIONS CENTRE
BSG DIST	BAY ST GEORGE DISTRICT	COMM	COMMUNICATIONS/COMMUNITY
BUR	BUREAU	COMP	COMPARTMENT
C		CON	CONTRACTS
CAL	CALGARY	CONST	CONSTABULARY
CAS	CRIMINAL ANALYSIS SECTION	CO-ORD	COORDINATOR/COORDINATION
C-B DIST	CLARENVILLE-BONAVISTA DISTRICT	CORRECT	CORRECTIONAL
CBS	CUSTOMS BORDER SERVICES	CORRES	CORRESPONDENCE
CCAPSD	COMMUNITY, CONTRACT & ABORIGINAL POLICING SERVICES	COS	CRIMINAL ORGANIZATION /OPERATIONS SECTION
CCB	COMMERCIAL CRIME BRANCH	CPC	CANADIAN POLICE COLLEGE/
CCIS	CALGARY CRIMINAL INTELLIGENCE SECTION		CASE PROCESSING CENTRE
CCRA	CANADA CUSTOMS & REVENUE AGENCY	CPIC	CANADIAN POLICE INFORMATION CENTRE
CCS	COMMERCIAL CRIME SECTION	CPO	CASE PRESENTATION OFFICER
CDIU	CENTRAL DRUG INFORMATION UNIT	CPR	CANADIAN PACIFIC RAILWAY
CDN	CANADIAN	CPSIC	CANADIAN POLICE SERVICES INFORMATION CENTRE
C&E	CUSTOMS & EXCISE		
CEF	CONTAINER EXAMINATION FACILITY	CR	CRESCENT
CE&T	CUSTOMS, EXCISE & TAXATION	CRS	CRIMINAL RECORDS SYNOPSIS
CFC	CANADIAN FIREARMS CENTRE	CSAB	CORRECTIONAL SERVICE ALBERTA
CFDU	COMBINED FORCES DRUG UNIT	CSBC	CORRECTIONAL SERVICE BRITISH COLUMBIA
CFSEU	COMBINED FORCES SPECIAL ENFORCEMENT UNIT		
CHARLT'N	CHARLOTTETOWN	CSC	CORRECTIONAL SERVICE CANADA
CIB	CRIMINAL INVESTIGATION BRANCH	CSIS	CANADIAN SECURITY INTELLIGENCE SERVICE
CIC	CITIZEN & IMMIGRATION CANADA		
CID	CRIMINAL INTELLIGENCE DIRECTORATE	CSMB	CORRECTIONAL SERVICE MANITOBA
CIIU	CALGARY INTEGRATED INTELLIGENCE UNIT	CSNB	CORRECTIONAL SERVICE NEW BRUNSWICK
CIR	CIRCLE	CSO	CORRECTIONAL SERVICE ONTARIO
		CSSK	CORRECTIONAL SERVICE SASKATCHEWAN

CST	CONSTABLE	FBI	FEDERAL BUREAU OF
CTR	CENTRE		INVESTIGATION
CTY	CITY	FED	FEDERAL
	D	FES	FEDERAL ENFORCEMENT SECTION
		FIC	FINANCIAL INSTITUTIONS
D5	DISTRICT		COMMISSION
DCAS	DIVISION CRIMINAL ANALYSIS	FINGERPRT	FINGERPRINT
	SECTION	FINTRAC	FINANCIAL TRANSACTIONS AND
DCAU	DIVISION CRIMINAL ANALYTICAL		REPORTS ANALYSIS CENTRE OF
	UNIT	FIS	CANADA
DCIAS	DIVISIONAL CRIMINAL INFORMATION		FORENSIC IDENTIFICATION
	ANALYTICAL SECTION/DIVISION	FIU	SECTION
	CRIME INTELLIGENCE ANALYTICAL	FLR	FEDERAL INVESTIGATION UNIT
	SERVICE	FLSD	FLOOR
DEB	DRUG ENFORCEMENT BRANCH		FORENSIC LAB SERVICES
DEPT	DEPARTMENT	FNCPS	DIRECTORATE
DES	DRUG ENFORCEMENT SECTION		FIRST NATIONS COMMUNITY
DET	DETACHMENT	FOSS	POLICE SERVICE
DEOC	DIVISION EMERGENCY OPS		FIELD OPERATIONS SUPPORT
	COMCENTRE	FOT	SYSTEM
DEU	DRUG ENFORCEMENT UNIT	FPS	FEDERAL OPERATIONS TEAM
DHQ	DISTRICT HEADQUARTERS	FREDT'N	FINGERPRINT SECTION
DIFO	DRUG INTELLIGENCE & FIELD	FRY	FREDERICTON
	OPERATIONS	FSD	FREEWAY
DIR	DIRECTOR/DIRECTORATE	F&SD	FEDERAL SERVICES DIRECTORATE
DIST	DISTRICT	FSSB	FINANCE & SUPPLY DIRECTORATE
DIV	DIVISION	BRANCH	FINANCIAL SERVICES & SUPPLY
DL DIST	DEER LAKE DISTRICT		
DND	DEPARTMENT OF NATIONAL		G
	DEFENCE		
DOAC	DANGEROUS OFFENDERS	GD	GENERAL DELIVERY
	APPLICATIONS CENTRE	GF-W DIST	GRAND FALLS-WINDSOR DISTRICT
D&R	DETENTION & REMOVALS	GHQ	GENERAL HEADQUARTERS
DR	DRIVE	GIS	GENERAL INVESTIGATION SECTION
DSC	DIRECTORATE OF SECURITY	GST	GOODS AND SERVICES TAX
	CLEARANCES	GTEC	GREATER TORONTO
DSRR	DIVISIONAL STAFF RELATIONS		ENFORCEMENT SECTION
	REPRESENTATIVE		
	E		H
E	EAST	HAL	HALIFAX
ECD	ECONOMIC CRIME DIRECTORATE	HP	HIGHWAY PATROL
ECON	ECONOMIC	HQ	HEADQUARTERS
EDT'N	EDMONTON	HRP	HALIFAX REGIONAL POLICE
EDPS	EXECUTIVE DIPLOMATIC	HTS	HEIGHTS
	PROTECTION	HV-GOOSE BAY	HAPPY VALLEY-GOOSE BAY
	SECTION/ELECTRONIC DATA	HWY	HIGHWAY
	PROCESSING SECTION		
EEOC	EAST EUROPEAN ORGANIZED		I
	CRIME	IAP	INTERNATIONAL AIRPORT
E&I	ENFORCEMENT & INVESTIGATIONS	IB	INFORMATICS BRANCH
EIIU	EDMONTON INTEGRATED	I/C, IC	IN CHARGE
	INTELLIGENCE UNIT	I&C	INTELLIGENCE & CONTRABAND
ENF/ENFORCE	ENFORCEMENT	ICBC	INSURANCE CORPORATION OF
ERM	ENVIRONMENT & RESOURCE		BRITISH COLUMBIA
	MANAGEMENT	ICES	INTERNATIONAL CUSTOMS
ERT	EMERGENCY RESPONSE TEAM		ENFORCEMENT SYSTEM
ESO	ENFORCEMENT SERVICES OFFICER	ICPB	INSURANCE CRIME PREVENTION
EST	ESTABLISHMENT		BUREAU
ESU	ENFORCEMENT SUPPORT UNIT	ID	INFORMATICS DIRECTORATE
EU	ENFORCEMENT UNIT	IDENT	IDENTIFICATION
EXEC	EXECUTIVE	IFB	IMMIGRATION & FEDERAL BRANCH
	F	IFSB	INFORMATICS FIELD SUPPORT
			BRANCH
FAC	FIREARMS ACQUISITION	IIEU	INTEGRATED INTELLIGENCE
	CERTIFICATE	IIS	ENFORCEMENT UNIT
			IMMIGRATION INVESTIGATIVE
			SERVICE

I&ISD	INFORMATION & IDENTIFICATION SERVICES DIRECTORATE	MTRL	MONTREAL
IJIS	INTEGRATED JUSTICE INFORMATION SYSTEM	MUN	MUNICIPAL
ILB	INTERNATIONAL LIAISON BRANCH	MVB	MOTOR VEHICLES BRANCH
IL&POD	INTERNATIONAL LIAISON & PROTECTIVE OPERATIONS DIRECTORATE		N
IMS	INFORMATION MANAGEMENT SECTION	N	NORTH
IMU	INFORMATION MANAGEMENT UNIT	NAT'L	NATIONAL
INFO	INFORMATION/INFORMATICS	NB	NEW BRUNSWICK
INSET	INTEGRATED NATIONAL SECURITY ENFORCEMENT TEAM	NCIB	NATIONAL CRIME INTELLIGENCE BRANCH
INST	INSTITUTES/ INSTITUTION / INSTITUTIONAL	NCIC	NATIONAL CRIME INFORMATION CENTER
INTELL	INTELLIGENCE	NCIS	NATIONAL CRIME INTELLIGENCE SECTION
INTERN	INTERNAL	NCM	NON-COMMISSIONED MEMBER
INTERPOL	INTERNATIONAL POLICE	NCO	NON-COMMISSIONED OFFICER
INT'L	INTERNATIONAL	NE	NORTH EAST
INVEST	INVESTIGATION/INVESTIGATIVE	NEN	NORTH EAST NOVA
IPOC	INTEGRATED PROCEEDS OF CRIME	NF	NEWFOUNDLAND
IP/I&P	IMMIGRATION & PASSPORT	NHQ	NATIONAL HEADQUARTERS
IPPC	INTEGRATED POLICE PLANNING COMMITTEE	NICB	NATIONAL INSURANCE CRIME BUREAU
IPS	IMMIGRATION & PASSPORT SECTION	NLETS	NATIONAL LAW ENFORCEMENT TELECOMMUNICATIONS SYSTEM
IPSO	INSTITUTIONAL PREVENTIVE SECURITY OFFICER	NP DIST	NORTHERN PENINSULA DISTRICT
ISTB	INFORMATION SYSTEM & TECHNOLOGY BRANCH	NS	NOVA SCOTIA
IU	INVESTIGATION UNIT	NSI	NATIONAL SECURITY INTELLIGENCE SERVICE
IWRC	IMMIGRATION WARRANT RESPONSE CENTRE	NSIS	NATIONAL SECURITY INTELLIGENCE SERVICE
	J	NSIU	NATIONAL SECURITY INVESTIGATIONS UNIT
		NSS	NETWORK SERVICES SECTION
		NW	NORTH WEST
		NT	NORTHWEST TERRITORIES
		NU	NUNAVUT
JCT	JUNCTION		O
JFO	JOINT FORCES OPERATIONS		
JPST	JOINT POLICE SECURITY TEAM		
JSFU	JOINT SECURITY FRAUD UNIT	OC	OFFICER COMMANDING
	L	OCC	OPERATIONAL COMMUNICATIONS CENTRE
L DIST	LABRADOR DISTRICT	OCS	ORGANIZED CRIME SECTION
LAB	LABORATORY	OIC,O I/C	OFFICER IN CHARGE
LB	LESTER B.	OIS	OPERATIONAL INFORMATION SYSTEMS
LBPIAP	LESTER B. PEARSON INTERNATIONAL AIRPORT	ON	ONTARIO
LIT	LITIGATION	OP	OPERATIONAL
LMD	LOWER MAINLAND DISTRICT	OPF	ONTARIO POLICE FORCES
	M	OPP	ONTARIO PROVINCIAL POLICE
		OPS	OPERATIONS
		OPS.OFF.	OFFSHORE SURV.
MB	MANITOBA		OPERATIONS OFFICER OFFSHORE SURVEILLANCE
MBG	MIGRATORY BIRD CONTROL	ORI:	ORIGINATOR NUMBER
MCU	MAJOR CRIMES UNIT	OSS	OPERATIONAL SUPPORT SECTION
METRO	METROPOLITAN	OTT	OTTAWA
MGR	MANAGER		P
MGT	MANAGEMENT		
MIIU	METRO INTEGRATED INTELLIGENCE UNIT	P.A.B.	PORT-AUX-BASQUES
M.LEG	MAIN LEGISLATIVE	PA&ID	PUBLIC AFFAIRS & INFORMATION DIRECTORATE
MO	MAIN OFFICE		
MPIC	MANITOBA PUBLIC INSURANCE CORPORATION	PB	PRIVACY BRANCH
MRU	MOBILE RESPONSE UNIT	PC	POSTAL CODE
MT	MOUNT	PCA	POLICE CAR ACCIDENTS
MTD	MOUNTED	PCI	PUBLIC COMPLAINTS INVESTIGATIONS
MTN	MOUNTAIN	PD	POLICE DEPARTMENT

PDRC	POST DETERMINATION REFUGEE CLASS	SECUR	SECURITY
PDS	POLICE DOG SERVICES	SERV	SERVICE(S)
PE	PRINCE EDWARD ISLAND	SEU	SPECIAL ENFORCEMENT UNIT
PEN	PENITENTIARY	SID	STATE IDENTIFICATION
PERS	PERSONNEL	SIS	SPECIAL INVESTIGATION SECTION
PEU	PARKING ENFORCEMENT UNIT	SIU	SPECIAL INVESTIGATION UNIT
PF	POLICE FORCE	SK	SASKATCHEWAN
PIRS	POLICE INFORMATION RETRIEVAL SYSTEM	S/O	SUB-OFFICE
PK	PARK	SP'L	SPECIAL
PI	PLACE	SQC	SECURITY & QUALITY CONTROL
PLID	PLAIN LANGUAGE IDENTIFIER	SQUAD	SQUADRON
PO	POST OFFICE	SR. RES OFFICER	SENIOR REGIONAL ENFORCEMENT SERVICES OFFICER
POC	PROCEEDS OF CRIME	SS	SECURITY SERVICE
POE	PORT OF ENTRY	ST	STREET
POL	POLICING	ST/STE	SAINT(E)
PORNO	PORNOGRAPHY/PORNOGRAPHIC	STN	STATION
PPD	PROTECTIVE POLICING	SUB-REG	SUB-REGISTRY
	DIRECTORATE	SW	SOUTH WEST
PROB	PROBATION	SYS	SYSTEM(S)
PROT	PROTECTION/PROTECTIVE		
PROV	PROVINCIAL		T
PPS	POLICE SERVICE(S)	TA	TEMPORARY ABSENCES
PSP	POLICE SUPPORT PROGRAMS	TC DIST	TRINITY CONCEPTION DISTRICT
PSU	PERSONNEL SECURITY UNIT	T&D	TRAINING & DEVELOPMENT
PVT	PRIVATE	TECH	TECHNICAL
P-W DIST	PLACENTIA-WHITBOURNE DISTRICT	TELECOM	TELECOMMUNICATIONS
		TEMP	TEMPORARY
	Q	TF	TASK FORCE
QC	QUEBEC (CITY/PROVINCE)	TLBPIA	TORONTO LESTER B. PEARSON INTERNATIONAL AIRPORT
		TOD	TECHNICAL OPERATIONS DIRECTORATE
	R	TOR	TORONTO
RCMP	ROYAL CANADIAN MOUNTED POLICE	TOSS	TECHNICAL OPERATIONS SUPPORT SYSTEM
RD	ROAD	TPOF	TECHNICAL AND PROTECTIVE OPERATIONS FACILITY
REC	RECORDS	TSO	TAXATION SERVICE OFFICE
RECNST	RECONSTRUCTION	TWP	TOWNSHIP
REG	REGION/REGIONAL		V
REGISTR	REGISTRATION/REGISTRY		
REL	RELATIONS		
RHQ	REGIONAL HEADQUARTERS		
RIIU	REGINA INTELLIGENCE INTEGRATED UNIT	VANC	VANCOUVER
RM	ROOM/RURAL MUNICIPALITY	VCAS	VIOLENT CRIME ANALYSIS SECTION
RMS	RECORDS MANAGEMENT SECTION	VICLAS	VIOLENT CRIME LINKAGE ANALYSIS SYSTEM
RPC	REGIONAL PSYCHIATRIC CENTRE	VIIU	VANCOUVER INTEGRATED INTELLIGENCE UNIT
RPO	POSTAL OUTLET	VIN	VEHICLE IDENTIFICATION NUMBER
RPU	REFUGEE PROCESSING UNIT	VIP	VERY IMPORTANT PERSONS
RR	RURAL ROUTE	VS	VICTIMS' SERVICES
RTE	ROUTE		
	S		W
S	SOUTH	W	WEST
SAS	SEXUAL ASSAULT SECTION	WARR	WARRANT(S)
SCQ	SECURITY & QUALITY CONTROL	WE&EI	WILDLIFE ENFORCEMENT AND ENVIRONMENT INTELLIGENCE
SCS	SERIOUS CRIME SECTION		WATER, LAND & AIR PROTECTION
SCU	SERIOUS CRIME UNIT/SECURITY CLEARANCE UNIT	WL&AP	WINNIPEG
S/D	SUB-DIVISION	WPG	
S/DET	SUB-DETACHMENT		Y
SE	SOUTH EAST		
SEC	SECTION	YT	YUKON TERRITORY

French Abréviations et Équivalents

A

AB	ALBERTA
AC	AGENT DE LIAISON
ACT	ACTIVITÉ
AD&I	ACCISE, DOUANES ET IMPÔT
ADM	ADMINISTRATION/ADMINISTRATIVE
ADRC	AGENCE DES DOUANES & DU REVENU DU CANADA
APPL	APPLICATION
AT	ABSENCES TEMPORARIES
AV	AVENUE

B

BC	COLOMBIE-BRITANNIQUE
BCS	BUREAU CONTRÔLE DES SOURCES
BL	BUREAU DE LIAISON
BDNC	BANQUE NATIONAL DES DONNEES CRIMINELLES
BOUL	BOULEVARD
BR	BUREAU REGIONAL
BRQCO	BUREAU DE RECHERCHES DU QUÉBEC SUR LE CRIME ORGANIZE
BST	BUREAU SERVIENCE DE TERRITOIRE
BUR	BUREAU

C

CAAF	CERTIFICATE D'ACQUISITION D'ARME À FEU
CAF	CONTROLEUR DES ARMES A FEU
CANT	CANTON
CDT S.-DIV.	COMMANDANT SOUS-DIVISIONNAIRE
CE	CONTRÔLE DES EFFETS
CH	CHEMIN
CIC	CITOYENNETÉ ET IMMIGRATION CANADA
CIPC	CENTRE D'INFORMATION DE LA POLICE CANADIENNE
CISCP	CENTRE D'INFORMATION DES SERVICES CANADIENS DE POLICE
CIV	CIVIL(E)
CJS	CASIERS JUDICIARIES SYNOPTIQUES
CO	CENTRED'OPERATION
COMM	COMMUNAUTE/ COMMUNICATIONS/COMMUTATION
CONTR	CONTROLE
CONURB	CONURBATION
COORD	COORDINATION/COORDONNATEUR
CP	CASIER POSTAL
CQ	CONTROLE QUALITE
CR	CRIMINEL(LES)
CRIM	CRIMINEL(LES)
CRPQ	CENTRE DE RENSEIGNEMENTS POLICIERS DU QUEBEC
CRU	CENTRE RENVOIS UNIFIE
CSSP	CENTRE SERVICE EN SECURITE PUBLIQUE
CTE	COMTE
CTR	CENTER

D

D-5	DISTRICT 5
DA	COUANES ET ACCISE
DC	DELITS COMMERCIAUX
DEC	DIVISION DES ENQUETES
DEV	DEVELOPPEMENT
DG	DIRECTION GENERALE
DIR	DIRECTION
DIST	DISTRICT
DIV	DIVISION(NAIRE)
DSTEC	DIVISION SOUTIEN TECHNIQUE ENQUETES CRIMINELLS

E

E	EST
EC	ENQUETES CRIMINEL (LES)
ECM	ESCOUADE CRIMINAL MAJEURS
EC/ST	ENQUETES CRIMINEL(LES) /SUPPORT TECHNIQUE
ECO	ESCOUADE CRIME ORGANISE
EF	ENQUETES FRONTALIERES
EG	ENQUETES GENERALES
ENQ	ENQUETES
ERAM	ESCOUDE REGIONALE ALCOOL ET MORALITE
ERM	ESCOUADE REGIONALE DES MOEURS
ES	ENQUETES SPECIALES /SPECIALISEES
ESS	ENQUETES SPECIAL SECURITE
ETAB	ETABLISSEMENT

F

FED	FEDERAL(ES)
FIN	FINANCIER/FINANCIERES
FJN	FICHIER JUDICIAIRE NOMINATIF

G

GCI	GROUPE DE CONTROLE ET DE L'INFORMATION
GEN	GENERAL (E)
GOUVERN	GOUVERNEMENT
GPC	GROUPE DES PRODUITS DE LA CRIMINALITE
GQG	GRAND QUARTIER GENERAL
GRC	GENDARMERIE ROYALE DU CANADA

H

HUM	HUMAINES
-----	----------

I

ICJ	INFORMATION DES CASIERS JUDICIAIRES
ID	IDENTITE
IND:	INDICATIF
INFO	INFORMATION/INFORMATIQUE/ INFORMATISES
INT'L	INTERNATIONALE
IP	IMMIGRATION ET PASSEPORT
IRC	INTERVENTION REGION CENTRE

J

JUD	JUDICIAIRE
-----	------------

L

LOC	LOCAL
-----	-------

M

M/MON	MONITEUR
MAT	MATERIEL
MB	MANITOBA
MDN	MINISTERE DE LA DEFENSE NATIONALE
MGR	MONSEIGNEUR
MIG	MIGRATION
MLLL	MONTREAL, LAVAL, LAURENTIDES & LANAUDIER
MRC	MUNICIPALITE REGIONALE DE COMPTE
MSI	MONITEUR SYSTEMES INFORMATISES
MT	MONT
MTRL	MONTREAL
MUN	MUNICIPAL

N

N	NORD
---	------

NAT'L	NATIONAL(E)
NB	NOUVEAU-BRUNSWICK
NE	NORD-EST
NF	TERRE-NEUVE
NIV	NUMEROS D'IDENTIFICATION DE VEHICULES
NOR	NORANDA
NOUV	NOUVEAU
NS	NOUVELLE-ECOSSE
NT	TERRITOIRES DU NORD-OUEST
NU	NUNAVUT

O

O	OUEST
OFF.	OFFICIER
OFF.DIV.	OFFICIER DIVISIONNAIRE
OFF. RESP.	OFFICIER RESPONSIBLE
OIX	OISEAUX
ON	ONTARIO
OP/OPER	OPERATIONNEL (LES)

P

PC	PRODUITS DE LA CRIMINALITE
PDQ	POSTE DE QUARTIER
PE	ILE-DU-PRINCE EDOUARD
POL	POLICERES
PR	PATROUILLE ROUTIERE
PROM	PROMENADE
PROT	PROTECTION

Q

QC	QUEBEC (VILLE OU PROVINCE)
QG	QUARTIER GENERAL
QGD/QG	QUARTIER GENERAL DE DISTRICT
DISTRICT	
QU/QUAL	QUALITE

R

RACJ	REGIE ALCOOL COURSES ET JEUX
RC	RENSEIGNEMENTS CRIMINALS
REG	REGION/REGIONAL(E)
REL	RELATIONS
RENS	RENSEIGNEMENT(S)
REPRESS	REPRESSION
RESP	RESPONSABLE
RESS	RESSOURCES
ROUT	ROUTIER/ROUTIERE
RS	RENSEIGNEMENTS SECURITE
RSO	RAPPORTS STATISTIQUES SUR LES OPERATIONS
RTE	ROUTE

S

S	SUD
SAAQ	SOCIETE ASSURANCE AUTOMOBILE QUEBEC
SARC	SYSTEME AUTOMATISE DES RENSEIGNEMENTS CRIMINELS
SAU	SERVICES AUX USAGERS
SCC	SERVICE CORRECTIONNEL CANADA
SCQ	SERVICE CORRECTIONAL DU QUEBEC
SCRS	SERVICE CANADIEN DU RENSEIGNEMENT+DE SECURITE
SD	SERVICE DIVISIONNAIRE
S-D	SOUS-DIVISION
SDAIC	SERVICE DIVISIONNAIRE DES ANALYSES DES INFORMATIONS CRIMINELLES
SDC	SECTION DES DELITS COMMERCIAUX
SDEC	SERVICE DIVISIONNAIRE DES ENQUETES CRIMINELLES

S-DIC	SOUS-DIRECTION DES INFRACTIONS COMMERCIALES
S.-DIV.	SOUS-DIVISION
S.-DON/	
S.-DIRECTION	SOUS DIRECTION
SDRC	SERVICE DIVISIONNAIRE RENSEIGNEMENTS CRIMINELS
SEC	SECURITE
SECT	SECTION
SEEA	SECTION ENQUETES ECONOMIQUES ANTIDROGUE
SEF	SECTION ENQUETES FRONTALIERES
SEG	SECTION ENQUETES GENERALES
SELF	SECTION ENQUETES LOIS FEDERALES
SEM	SEMAINE
SENS	SENSIBILISATION
SERV	SERVICE(S)
SESN	SECTION ENQUETES RELATIVES A LA SECURITE NATIONALE
SESS	SERVICE ENQUETES SPECIALE SECURITE
SFD	SERVICE FRONTALIER DES DOUANES
SFJ	SECTION DU FICHIER/JUDICIAIRE
SLAD	SECTION LUTTE ANTIDROGUE
SM	SURETE MUNICIPALE DU QUEBEC
S.OFF. RESP	SOUS-OFFICIER RESPONSABLE
SP	SERVICE DE POLICE
SPC	SECTION POLICE CRIMINELLE
SPCUM	SERVICE DE POLICE DE LA COMMUNAUTE URBAINE DE MONTREAL
SPEC	SPECIAL(E)
SPPCAD	SECTION DE LA PROTECTION DES PERSONNALITES CANADIEN ET AGENTS DIPLOMATIQUES
SPVM	SERVICE DE POLICE DE LA VILLE DE MONTREAL
SQ	SURETE DU QUEBEC
SRAC	SECTION RENSEIGNEMENTS ET ANALYSES CRIMINALS
SRC	SECTION/SERVICE DES RENSEIGNEMENTS CRIMINELLES
SRCMD	SECTION DES RENSEIGNEMENTS CRIMINELS MORALITE ET DROGUE
SRCQ	SERVICE DES RENSEIGNEMENTS CRIMINELLES DU QUEBEC
SRR	SYSTEME DE RAPPORTS DE POLICE
SR/TR	SECURITE ROUTIERE ET TRANSPORT ROUTIER
SS	SERVICE DE SECURITE
SSID	SECTION SECURITE INTEGRATION DES DONNEES
SSR	SECTION DES SERVICES DU RESEAU
ST/STE	SAINT(E)
STO	STATION DE TRANSMISSIONS OPERATIONNELLES
SUCC	SUCCURSALE
SUPP	SUPPORT
SUR	SURETE
SURV	SURVEILLANCE
SYST	SYSTEME(S)

T

TECHN	TECHNIQUE
TELECOMM	TELECOMMUNICATIONS
TEMIS	TEMISCAMINGUE
TERR	TERRITOIRE
TRAF	TRAFIQUANTS
TRANSM	TRANSMISSION
TRANSP	TRANSPORT

U

ULF	UNITE DES LOIS FEDERALES
URC	UNITE RENSEIGNEMENTS CRIMINELS
URCOMM	UNITE RELATIONS COMMUNATAIRE
URS	UNITE RENSEIGNEMENTS SECURITE
USR	UNITE SECURITE ROUTIERE
USRTR	UNITE SECURITE ROUTIERE ET TRANSPORT ROUTIER
USTEC	UNITE SOUTIEN TECHNIQUE ENQUETES CRIMINELS

V

VERIF.	VERIFICATION
--------	--------------

Y

YT	YUKON
----	-------

Appendix H: ISO 19115:2003 Compliant Metadata

Metadata Notification

As of May 15th 2005, DMTI Spatial data products have metadata that are ISO 19115:2003 compliant.

This product now includes structured metadata files as provided in XML and/or HTM format. These metadata files reside with the graphic or database files to which they are associated. It is recommended that users review and customize the metadata as per their specific needs.

This latest addition to the CanMap[®] line of products is another enhancement that will benefit our users and increase overall product satisfaction.