



## Table of Contents

<b>DOCUMENT UPDATES .....</b>	<b>3</b>
About DMTI Spatial .....	5
Technical Support, Error Reporting & Product Enhancement Services .....	5
Contact Information .....	5
Trademarks and Notices .....	6
<b>ABOUT EPOI.....</b>	<b>7</b>
File Properties .....	7
File Naming Conventions .....	7
EPOI File Structure.....	9
EPOI Look Up Table Specifications .....	11
<b>DATA DICTIONARY .....</b>	<b>12</b>
Accommodation (acc).....	12
Aerodromes (aer) .....	12
Building Names (bld) .....	13
Border Crossings & Customs Offices (bor) .....	13
Car Rental Agencies (car) .....	14
Cinemas (cin) .....	14
Car Pool Parking Lots (cpl).....	14
Education (edu) .....	14
Financial Institutions (fin).....	16
Fire Stations (fre).....	16
Gasoline Service Stations (gas) .....	16
Golf Courses (glf) .....	17
Health Care (hcr).....	17
Police Services (pol).....	17
Religion (rel) .....	18
Retail Postal Outlets (rpo) .....	18
Shopping Centers (shp).....	18
Ski Centers (ski) .....	19
Toll Booths (tol) .....	19
Tourist (tou) .....	19
Transit Stops (trs).....	20
Weigh Stations (wgh) .....	21
<b>APPENDIX A: IMPORTING EPOI DATA IN GIS SOFTWARE .....</b>	<b>22</b>
<b>APPENDIX B: PROVINCIAL AND TERRITORIAL ABBREVIATIONS AND CODES.....</b>	<b>25</b>
<b>APPENDIX C: CANADIAN URBAN AREAS AND ABBREVIATIONS .....</b>	<b>26</b>
<b>APPENDIX D: STANDARD INDUSTRIAL CLASSIFICATION CODES .....</b>	<b>27</b>
SIC Division .....	27
SIC Major Group.....	27
SIC Code .....	29
<b>APPENDIX E: NAICS CODES .....</b>	<b>47</b>
NAIC Major Group .....	47
NAICS Code .....	48
<b>APPENDIX F: BORDER CROSSINGS AND CUSTOMS OFFICES .....</b>	<b>71</b>
<b>APPENDIX G: CPIC NATIONAL DIRECTORY .....</b>	<b>73</b>
English Abbreviations and Definitions .....	73
French Abréviations et Équivalents.....	77

## **Document Updates**

---

Over the past release, the following additions have been made within the EPOI Product:

### **2012.1**

- Increased number of white pages business listings
- Better standardization of addresses
- Reduction of duplicated business records, these have been flagged in the file for deletion
- Unit\_Suite field has been increased from 25 to 150 characters
- Website field has been increased from 50 to 255

### **2011.4**

- Increased number of white pages business listings
- Updates to the AER (Airports), EDU (Schools), FRE (Fire Stations), POL (Police Stations) and TRS (Transit Stops) content

### **2011.3**

- Increased number of white pages business listings
- Updates to the EDU (Schools), FRE (Fire Stations), POL (Police Stations) content

### **2011.2**

- Added three new columns to the EPOI table schema
  - MAF – municipality amalgamation value to provide a standardized municipality value
  - Website – URL associated with business – will be added to over time to infill more records
  - NAICS – NAICS codes associated with records – will be added to over time to infill more records
- Appendix focused on NAICS values and definitions

### **2011.1**

#### **Added new SIC code category (8999 ~ Services)**

- Changes made to SIC\_Division and SIC Major Group text

#### **Additional notes are within the release notes**

### **2010.4**

#### **Renumbered duplicate POI\_ID values within the database**

- Duplicate POI\_IDs were in the May 2010.2 release. Duplicate records were found to exist for the following scenarios:
  - Record 1 and record 2 contained the same attribution and had the same POI\_ID value.
  - Record 1 and record 2 contained the different attribution and had the same POI\_ID value.
  - Record 1 and record 2 were flagged as ACTIVE and DELETED/RETIRED respectively.

The relationship between old to new POI\_ID values is captured within the lookup table  
OLD\_NEW\_POI\_ID\_LUT.txt

#### **Addition of new precision code levels in EPOI database**

- Two new precision codes have been added to the EPOI database. These represent high precision coordinates placed to building footprint or parcel by satellite imagery. The previous precision levels have now changed code values; see the user manual for v2010.1 to v2010.2 equivalency table.

## About DMTI Spatial

DMTI has been providing industry leading enterprise Location Intelligence solutions for more than a decade to Global 2000 companies and government agencies. DMTI's world-class Location Hub platform uniquely identifies, validates and maintains a universe of location-based data. DMTI is the creator of market leading Mapping Solutions and maintains the gold standard for GIS location-based data in Canada.

## Technical Support, Error Reporting & Product Enhancement Services

DMTI Spatial is committed to building the best products possible for our customers. By using our data every day in your mission critical application you are our best source for product refinement. Please let us know if you have an enhancement request or found an error in any of our products so that we can make the correction for the next release.

This is your opportunity to provide feedback directly to the DMTI Spatial Product Development Team. Please be as specific as possible so that we can improve our products quickly and accurately. To submit an error or request technical assistance please visit:

<http://www.dmtispatial.com/en/Resources/TechSupport.aspx>

If you have an idea for a new product, or an enhancement request for an existing product, please e-mail:

[pm@dmτισpatial.com](mailto:pm@dmτισpatial.com)

## Contact Information

DMTI Spatial Inc.  
15 Allstate Parkway, Suite 400  
Markham, Ontario  
L3R 5B4 Canada

Telephone: 905-948-2000  
Toll Free: 1-877-477-DMTI (3684)  
Fax: 905-948-9404

Web Site: [www.dmtispatial.com](http://www.dmtispatial.com)

Error Reporting Service: <http://www.dmtispatial.com/helpdesk/index.aspx>

Product Enhancement Requests: [pm@dmτισpatial.com](mailto:pm@dmτισpatial.com)

Technical Support: <http://www.dmtispatial.com/helpdesk/index.aspx>

## Trademarks and Notices

© 2013 DMTI Spatial Inc. CanMap is a registered trademark of DMTI Spatial Inc. DMTI Spatial, Really Smart Spatial Solutions, Because Where Is What Matters and GeoPinpoint are trademarks of DMTI Spatial Inc. All rights reserved. Other products and company names mentioned herein may be trademarks of their respective companies. Mention of third-party products is for informational purposes only and constitutes neither a recommendation nor an endorsement.

DMTI Spatial is an Authorized User and Distributor of selected Statistics Canada Computer File(s) under Licensing Agreement 6228. No confidential information about an individual, family, household, organization or business has been obtained from Statistics Canada.

© Copyright, HER MAJESTY THE QUEEN IN RIGHT OF CANADA, as represented by the Minister of Industry, Statistics Canada 2007.

Postal Code is an official mark of Canada Post Corporation.

Digital Topographic Data produced under License from Her Majesty the Queen in Right of Canada, with permission of Natural Resources Canada and The Queen in Right of Manitoba.

---

## About EPOI

### File Properties


Property	Description
Coverage	Nationwide
Currency	August 15, 2013
Format	ASCII text files (comma delimited) <sup>1</sup>
Projection	All coordinates are displayed as unprojected Longitude-Latitude
Datum	All coordinates are in WGS84 datum

### File Naming Conventions

Representing the data coverage, files are either named by a region, Statistics Canada census subdivision (CSD) number, or a Standard Industrial Classification.

#### File Names by Region

For example: \On.txt



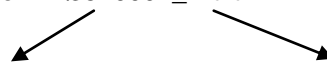
Geographic Area Abbreviation <sup>2</sup>
ON

#### File Names by 1996 Census Subdivision (CSD)

Census Subdivision is the general term applied to municipalities (as determined by provincial legislation) or their equivalent, for example Indian reserves, Indian settlements and unorganized territories.

All files are prefixed with the Census Subdivision Code. An additional text file (CSD.txt) containing a CSD and its associated municipality name is included in each order by CSD.

For example: \3520004\_A.txt

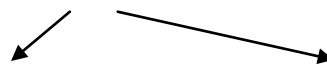


Census Subdivision	File Name
3520004 (Toronto)	A (Division A)

#### File Names by Standard Industrial Classification (SIC)

Orders by SIC will contain the SIC specification of the data purchased in the file name.<sup>3</sup>

For example: \OnA.txt



Geographic Area Abbreviation	File Name
ON	A (SIC Division A)

<sup>1</sup> See [Appendix A: Importing Data Into GIS Software](#) for information on how to import EPOI files into GIS software (including MapInfo, ArcView 3.x, and ArcGIS 8.1).

<sup>2</sup> See [Appendix B: Provincial and Territorial Abbreviations and Codes](#) and [Appendix C: Canadian Urban Areas and Abbreviations](#) for a list of region names and their abbreviations.

<sup>3</sup> For a list of File Name abbreviations, refer to [Appendix D: Standard Classification \(SIC\) Codes](#).

## File Names of EPOI Look Up Tables

Look up tables contain information such as; the number of beds in a hospital, the location code of an airport, and the grade range taught within a school. Look up tables are linked to the main table via the POI\_ID field. For example, a record in the POI database that has an EPOI\_TYPE = POL (Police Services) links via the POI\_ID field to the “pol” (Police Services) look up table.

## EPOI and EPOI Look Up Table Examples

EPOI File	EPOI Look Up Table	Description
OnJ.TXT	OnJ_POL.txt	Ontario by SIC Division “J” (Public Administration)
On92.txt	On92_POL.txt	Ontario by SIC Major Group “92” (Justice, Public Order, And Safety)
On9221.txt	On9221_POL.txt	Ontario by SIC Code “9221” (Police Protection)

Enhanced attribution can be found in the following look up tables.

EPOI_TYPE Classification	EPOI_TYPE Description
ACC	Accommodation
AER	Aerodromes
BLD	Building Names
BOR	Border Crossings & Customs Offices
CAR	Car Rental Agencies
CIN	Cinemas
CPL	Car Pool Parking Lots
EDU	Education
FIN	Financial Institutions
FRE	Fire Stations
GAS	Gasoline Service Stations
GLF	Golf Courses
HCR	Health Care
POL	Police Services
REL	Religion
RPO	Retail Postal Outlets
SHP	Shopping Centres
SKI	Ski Centres
TOL	Toll Booths
TOU	Tourist
TRS	Transit Stops
WGH	Weigh Stations



## EPOI File Structure

Field Name	Field Type	Field Size	Field Description
POI_ID	Character	15	Unique ID
NAME	Character	150	Name
UNIT_SUITE	Character	150	Unit or Suite #
ADDRESS	Character	45	Address
DELIV_MODE	Character	25	General Delivery Address (i.e. PO BOX)
CITY	Character	68	City or Municipality
MAF	Character	80	Standardized municipality value (populated by Municipal Amalgamation File)
PROV	Character	2	Province
POST_CODE	Character	7	Postal Code
LOCATION	Character	100	Description of location
PHONE	Character	15	Phone Number
FAX	Character	15	Fax Number
TOLL_FREE	Character	15	Toll Free Number
WEBSITE	Character	255	URL associated with business
EPOI_TYPE	Character	3	Three letter abbreviation of EPOI type
CAF	Character	15	Common Address Flag
SIC_1	Character	8	Standard Industrial Classification - Primary
SIC_2	Character	8	Standard Industrial Classification
SIC_3	Character	8	Standard Industrial Classification
SIC_4	Character	8	Standard Industrial Classification
SIC_5	Character	8	Standard Industrial Classification
SIC_6	Character	8	Standard Industrial Classification
NAICS_1	Character	6	NAICS code - Primary
NAICS_2	Character	6	NAICS code
NAICS_3	Character	6	NAICS code
NAICS_4	Character	6	NAICS code
NAICS_5	Character	6	NAICS code
SIC_MJ_GRP	Character	2	Standard Industrial Classification Major Group
SIC_DIV	Character	1	Standard Industrial Classification Division Group
X	Number		Longitude
Y	Number		Latitude
PREC_CODE	Character	2	Precision code indicating accuracy of geocoded point
ATTRIBCODE	Character	2	Attribution code indicating the accuracy of attribute data
STATUS	Character	15	Status of record from last quarter
COMM_NAME	Character	50	Common name of the main chains – the most usual in the public perception
GRP_IND	Character	15	Group Indicator – POI_ID of the dominant record for records sharing the same address

The EPOI files containing the retired records have the same structure. Such files are also named by a region:

For example:	\\ON_retired.txt
--------------	------------------

### Common Address Flag (CAF)

It is common for businesses or other recreational facilities to share addresses, for example in skyscrapers or shopping centers. The EPOI product has a feature that allows users to identify records that have common addresses. A group by query on the CAF field will allow a user to extract a single record by address. The CAF is an alphanumeric code that is unique to a unique address.

NAME	ADDRESS	SIC	PHONE	CAF
Business 1	10 Main St.	A	1	ADD1
Business 2	10 Main St.	B	2	ADD1
Business 3	10 Main St.	C	3	ADD1
Business 4	1 King St.	D	4	ADD2
Business 5	1 King St.	E	5	ADD2

The CAF is only applied to records that have an address. Some DMTI-sourced records (AttribCode = "1") do not have an address and therefore the CAF field is blank.

### Precision Code (PREC\_CODE)

2010.1 Value	2010.2 Value	Description
N/A	1	Point aligned to Building Footprint fabric via Orthorectified photo or satellite imagery
N/A	2	Point aligned to Parcel fabric via Orthorectified photo or satellite imagery
1	3	Centroid of 1:50 000 NTDB/CanVec feature or placed via Orthorectified photo
2	4	Block-face representative point from CanMap streets - High precision
3	5	Block-face representative point from CanMap streets - Lower precision
4	6	Postal Code - Block-face representative point/ Local Delivery Unit (LDU) centroid
5	7	Forward Sortation Area (FSA) centroid
6	8	Municipal Centroid

### Attribution Code (ATTRIBCODE)

Value	Description
1	DMTI Spatial sourcing
2	Other sourcing – High confidence (Validated by DMTI Spatial)

### Record Status (STATUS)

Value	Description
	No change since last quarter
ADD	New record
MODIFY	Changed since last quarter
RETIRED *	Retired record – out of business
DELETE *	Retired record – duplicate

\* These records are stored only in the files containing the retired records.

## EPOI Look Up Table Specifications

SIC Look Up Tables link to the main database via SIC Division or SIC Major Group.

Look Up Table	Look Up Table Description
sic_mjgrp_desc	SIC Major Group Descriptions
sic_div_desc	SIC Division Descriptions

### SIC Division Descriptions (sic\_div\_desc)

The SIC Division Description table includes the description of all SIC Divisions that exist in the file.

#### File Structure

Field Name	Field Type	Field Size	Field Description
SIC_DIV	Character	1	SIC Division Group
DESCRIPTION	Character	150	Description of SIC Division

### SIC Major Group Descriptions (sic\_mjgrp\_desc)

The SIC Major Group Description table includes the description of all SIC Major Groups that exist in the file.

#### File Structure

Field Name	Field Type	Field Size	Field Description
SIC_MJ_GRP	Character	2	SIC Major Group
DESCRIPTION	Character	150	Description of SIC Major Group

## Data Dictionary

### Accommodation (acc)

The accommodation layer includes hotels, motels, and inns.

#### File Structure

Field Name	Field Type	Field Size	Field Description
POI_ID	Character	15	Unique ID (link to main POI database)
EPOI_TYPE	Character	3	Point of Interest Classification
CHAIN	Character	100	Accommodation Chain

### Aerodromes (aer)

The aerodromes layer includes airports, heliports, and water aerodromes.<sup>4</sup>

#### File Structure

Field Name	Field Type	Field Size	Field Description
POI_ID	Character	15	Unique ID (link to main EPOI database)
EPOI_TYPE	Character	3	Point of Interest Classification
ICAO_CODE	Character	4	Location Indicator assigned by Transport Canada and the U.S. Federal Aviation Administration (4 character)
IATA_CODE	Character	3	Location indicator assigned by Transport Canada and the U.S. Federal Aviation Administration (3 character)
AER_TYPE	Character	10	Type of Aerodrome
AER_STATUS	Character	10	Operational Status of Aerodrome. Indicates if the aerodrome is operational or abandoned.
NAME_ALIAS	Character	125	Alternate name of Aerodrome
X1	Number		Longitude of first or main entrance point (Terminal 1)
Y1	Number		Latitude of first or main entrance point (Terminal 1)
X2	Number		Longitude of second entrance point (Terminal 2)
Y2	Number		Latitude of second entrance point (Terminal 2)
X3	Number		Longitude of third entrance point (Terminal 3)
Y3	Number		Latitude of third entrance point (Terminal 3)

#### Contents

AER_TYPE	Description
LAND	Aerodromes that provide an advantage for the aviation community are included. This includes aerodromes that are open to the public, are used by more than one aircraft and have a telephone available for users of the aerodrome.
WATER	Water aerodromes that provide an advantage for the aviation community are included, typically this includes aerodromes that are open to the public, are used by more than one aircraft, have an area for docking or beaching with tie downs and have a telephone available for users of the aerodrome.
HELIPORT	Heliports that provide an advantage for the aviation community are included. This includes heliports that are open to the public, are used by more than one aircraft and have a telephone available for users of the heliport.

<sup>4</sup> Source: Geomatics Canada, Canada Flight Supplement and Canada Water Aerodrome Supplement (WAS), March 2003

## Name and Name\_Alias

The Name field contains the names of aerodromes and indicates what communities they may serve. The Name\_Alias field provides an alias for the aerodrome. For example:

Name	City	Name Alias
Toronto/Lester B. Pearson Intl	Toronto	Lester B Pearson International Airport
Montréal/St-Hubert	Montréal	Aéroport de Saint-Hubert
Calgary/Springbank	Calgary	Calgary Springbank Airport

## Building Names (bld)

The Building Names layer includes building names and building types.

### File Structure

Field Name	Field Type	Field Size	Field Description
POI_ID	Character	15	Unique ID (link to main EPOI database)
EPOI_TYPE	Character	3	Point of Interest Classification
SUITE_FROM_NUM	Character	25	The lowest value in a range of suites or apartments
SUITE_TO_NUM	Character	25	The highest value in a range of suites or apartments
BUILD_TYPE	Character	11	Representation of whether the building is a business building or an apartment building

## Border Crossings & Customs Offices (bor)

The Borders Crossings and Customs Offices layer includes independent offices, subordinate offices, service sites, and warehouses.

### File Structure

Field Name	Field Type	Field Size	Field Description
POI_ID	Character	15	Unique ID (link to main EPOI database)
EPOI_TYPE	Character	3	Point of Interest Classification
BOR_TYPE	Character	10	Indicates if an office is an Independent, a Subordinate or a Service Site
PORT_NO	Character	5	The number of the Independent Office
REP_TO	Character	75	The name and number of the Independent Office that a Subordinate or Service site reports to
HUB	Character	1	Indicates if an office is a HUB or not. A HUB is an independent office to which a subordinate office would report.
SERVICES	Character	45	Types of services available at that office <sup>5</sup>
US_PORT	Character	30	Name of the US Customs Office opposite to the Canadian Customs Office

<sup>5</sup> Detailed information regarding customs operations, the hours and types of services available at custom offices, definitions of terms, and abbreviations used in the Services field, can be found in [Appendix E: Border Crossings and Customs Offices](#).

## Contents

BOR_TYPE	Description
IND	Independent Offices
SER	Service Sites
SUB	Subordinate Offices

## Car Rental Agencies (car)

The Car Rental Agencies layer includes the following Car Rental Agencies: Alamo, Avis, Budget, Discount, Enterprise, Hertz, National and Thrifty.

### File Structure

Field Name	Field Type	Field Size	Field Description
POI_ID	Character	15	Unique ID (link to main EPOI database)
EPOI_TYPE	Character	3	Point of Interest Classification
CHAIN	Character	100	Car Rental Chain
LOC_CODE	Character	10	Unique Identifier for a branch within a chain

## Cinemas (cin)

The cinema layer contains cinemas across Canada.

### File Structure

Field Name	Field Type	Field Size	Field Description
POI_ID	Character	15	Unique ID (link to main EPOI database)
EPOI_TYPE	Character	3	Point of Interest Classification
SCREEN_NO	Character	5	Number of screens in given theatre
PHONE_2	Character	15	Second phone number

## Car Pool Parking Lots (cpl)

The Car Pool Parking Lots layer indicates the name, exit number, and location of Car Pool Parking Lots on the Major Expressways. This layer provides data for Ontario only.

### File Structure

Field Name	Field Type	Field Size	Field Description
POI_ID	Character	15	Unique ID (link to main EPOI database)
EPOI_TYPE	Character	3	Point of Interest Classification
EXIT_NUM	Character	5	Hwy exit number at location of Car Pool Lot
DIRECTION	Character	2	Direction of Hwy Car Pool Lot

## Education (edu)

The Education layer includes Elementary Schools, High Schools, Colleges, Cégeps and Universities.

### File Structure

Field Name	Field Type	Field Size	Field Description
POI_ID	Character	15	Unique ID (link to main EPOI database)
EPOI_TYPE	Character	3	Point of Interest Classification
EDU_TYPE	Character	10	Education Point of Interest Classification
DISTRICT	Character	100	District where the facility resides
DISTRICT_ID	Character	50	District ID
LEVEL	Character	10	Teaching Level
LANGUAGE	Character	10	Predominate or language-only type Some educational facilities use two languages to teach, but one is usually predominant. The dominant language is represented first.
GRADES	Character	10	Grade range

### Contents

EDU_TYPE	Description
CG	Cégep
CL	College
FN	First Nations
P	Public
PR	Private/Independent
S	Catholic (Separate)
SN	Special Needs
UV	University
ES*	Educational Support Services

\* School boards represent records associated with this category or other establishments primarily engaged in providing non-instructional services that support educational processes or systems.

LANGUAGE	Description
E	English
F	French
H	Hebrew
G	German
U	Ukrainian
C	Cree
F/E	French & English
E/F	English & French
E/H	English & Hebrew
E/G	English & German
E/U	English & Ukrainian

LEVEL	GRADES	Description
J	K-6	Junior
I	7-8	Intermediate
S	9-12	Senior
J/I	K-8	Junior/Intermediate
I/S	7-12	Intermediate/Senior
J/I/S	K-12	Junior/Intermediate/Senior
	ADULT	Adult education

## Financial Institutions (fin)

The Financial Institutions layer includes financial institutions belonging to one of the following three groups: (1) Banks, (2) Credit Unions and Caisses Populaires, (3) Trust Companies, Loan Companies, and Other Deposit-Taking Institutions.

### File Structure

Field Name	Field Type	Field Size	Field Description
POI_ID	Character	15	Unique ID (link to main EPOI database)
EPOI_TYPE	Character	3	Point of Interest Classification
FIN_TYPE	Character	70	Type of Payment Association

## Fire Stations (fre)

The Fire Stations layer includes fire stations in the provinces of Ontario, Quebec, British Columbia, Alberta and Saskatchewan.

### File Structure

Field Name	Field Type	Field Size	Field Description
POI_ID	Character	15	Unique ID (link to main EPOI database)
EPOI_TYPE	Character	3	Point of Interest Classification
STATION	Character	68	Name of Fire Station

## Gasoline Service Stations (gas)

The Gasoline Service Stations layer is comprised of six different gas companies: Husky, Irving, PetroCanada, Pioneer, Shell, and Sunoco. Pioneer and Sunoco gas stations are provided for Ontario only.

### File Structure

Field Name	Field Type	Field Size	Field Description
POI_ID	Character	15	Unique ID (link to main EPOI database)
EPOI_TYPE	Character	3	Point of Interest Classification
CHAIN	Character	100	Gas Station Chain
PROPANE	Character	3	Propane Available
DIESEL	Character	3	Diesel Available



## Golf Courses (glf)

The Golf Courses layer contains Private and Public golf courses.

### File Structure

Field Name	Field Size	Field Type	Field Description
POI_ID	Character	15	Unique ID (link to main EPOI database)
EPOI_TYPE	Character	3	Point of Interest Classification
NUM_HOLE	Character	5	Number of Holes at Golf Course
GLF_TYPE	Character	15	Golf Course Point of Interest Classification

## Health Care (hcr)

The Health Care layer includes Hospitals, Long-Term Care Centers, Nursing Stations, Outpatient Clinics and Community Health Centers.

### File Structure

Field Name	Field Type	Field Size	Field Description
POI_ID	Character	15	Unique ID (link to main EPOI database)
EPOI_TYPE	Character	3	Point of Interest Classification
TOTAL_BEDS	Character	5	Total number of beds
HCR_TYPE	Character	1	Health Care Point of Interest Classification

### Contents

HCR_TYPE	Description
H	Acute Care Hospital
L	Long-Term Care Center
N	Nursing Station
O	Outpatient Clinic
C	Community Health Center

## Police Services (pol)<sup>6</sup>

The Police Services layer includes the Ontario Provincial Police (OPP), Royal Canadian Mounted Police (RCMP), Sûreté du Québec (SQ), the Royal Newfoundland Constabulary (RNC), and other municipal police services.<sup>7</sup>

### File Structure

Field Name	Field Type	Field Size	Field Description
POI_ID	Character	15	Unique ID (link to main EPOI database)
EPOI_TYPE	Character	3	Point of Interest Classification
STN_ADMIN	Character	70	Police Station or Administrator

<sup>6</sup> Source: CPIC National Directory, Canadian Police Information Centre, 2002.

<sup>7</sup> A complete listing of abbreviations and definitions (English/ French) used in the Police Services layer is found in [Appendix F : CPIC National Directory](#).

POL_TYPE	Character	30	Police Service Point of Interest Classification
----------	-----------	----	---

### Contents

POL_TYPE	Description
FEDERAL AGENCIES	Federal Agencies
OPP AGENCIES	Ontario Provincial Police Agencies
OPP HQ	Ontario Provincial Police Headquarter
POLICE SERVICES	Police Services
PROVINCIAL AGENCIES	Provincial Agencies
RCMP AGENCIES	Royal Canadian Mounted Police Agencies
RCMP HQ OTTAWA	Royal Canadian Mounted Police Headquarter Ottawa
SQ AGENCIES	Sûreté de Québec Agencies
TERRITORIAL AGENCIES	Territorial Agencies

## Religion (rel)

The Religion layer includes places of worship and religious organizations.

### File Structure

Field Name	Field Type	Field Size	Field Description
POI_ID	Character	15	Unique ID (link to main EPOI database)
EPOI_TYPE	Character	3	Point of Interest Classification
REL_CATEGORY	Character	35	The Religion Name
REL_TYPE	Character	50	Religious Location Classification

### Contents

REL_CATEGORY
BUDDHISM
CHRISTIAN
ISLAM
JUDAISM

REL_TYPE
PLACE OF WORSHIP
ORGANIZATION

## Retail Postal Outlets (rpo)

The Retail Postal Outlets layer includes over 8500 postal outlets across Canada.

*Note: There is no look up table for the RPO layer. All relevant information is found in the main table.*

## Shopping Centers (shp)

The Shopping Centers layer includes over 2000 shopping centers across Canada.

*Note: There is no look up table for the SHP layer. All relevant information is found in the main table.*

## Ski Centers (ski)

The Ski Centers layer is comprised of over 200 skiing facilities across Canada.

*Note: There is no look up table for the SKI layer. All relevant information is found in the main table.*

## Toll Booths (tol)

The Toll Booths layer indicates the name and location of Toll Booths.

### File Structure

Field Name	Field Type	Field Size	Field Description
POI_ID	Character	15	Unique ID (link to main EPOI database)
EPOI_TYPE	Character	3	Point of Interest Classification
DIRECTION	Character	2	Direction of road that toll booth is located on

### Contents

DIRECTION	Description
E	East
W	West
N	North
S	South

## Tourist (tou)

The Tourist layer includes categories such as National, Provincial and Municipal parks, Art Galleries, Attractions, Fishing Resorts, Historic Sites, Museums, Science Centres, Tourist Information Booths, and Zoos.

### File Structure

Field Name	Field Type	Field Size	Field Description
POI_ID	Character	15	Unique ID (link to main EPOI database)
EPOI_TYPE	Character	3	Point of Interest Classification
SEASON	Character	50	Season that Tourist POI is open
TOU_TYPE	Character	5	Tourist Point of Interest Classification
PRK_TYPE	Character	40	Park and Nature Preserve/Conservatory categories

## Content

### TOU\_TYPE

TOU_TYPE	Description
ACH	Archive
ADV	Outdoor Adventure Company/Tour
AQU	Aquarium
ATT	Attraction
BCH	Beach
CAS	Casino
CEC	Cultural or Environmental Education Center
CMP	Campground/Campsite/Trailer Park
DFS	Duty-Free Shop
FSH	Fishing Lodge/Camp
GAL	Art Gallery
GDN	Garden
HIS	Historic Site/Park/Location
LIB	Library

TOU_TYPE	Description
MUS	Museum
NAT	Nature Preserve/Conservatory
OBS	Observatory
OLY	Vancouver 2010 Olympic Locations
ORG	Organization related to Arts and Culture
PNT	Planetarium
PRK	Park
RLG	Religious Institution
SCI	Science Centre
SCN	Scenic Site/Trail/Area
TIC	Tourist Information Centre
WTS	Water Tour/Cruise
ZOO	Zoo

### PRK\_TYPE

TOU_TYPE	PRK_TYPE
PRK	NATIONAL PARKS
PRK	PROVINCIAL PARKS
PRK	TERRITORIAL PARKS
PRK	OTHER PARKS
NAT	NATIONAL WILDLIFE AREA
NAT	MIGRATORY BIRD SANCTUARY
NAT	OTHER PARKS
Other TOU_TYPE categories	N/A (Not applicable)

## Transit Stops (trs)

The Transit Stops layer contains the Type, Owner, Route and Number (if applicable).

### File Structure

Field Name	Field Size	Field Type	Field Description
POI_ID	Character	15	Unique ID (link to main EPOI database)
EPOI_TYPE	Character	3	Classification of the EPOI
TRS_TYPE	Character	25	Transit Stop points of interest classification
OWNER	Character	68	Transit Stop points of interest ownership
ROUTE	Character	68	Transit Stop points of interest transit route
TRS_NUM	Character	8	Transit Stop points of interest number
CODE	Number		Transit Stop points of interest NTDB code
FEATURE	Character	76	Transit Stop points of interest NTDB feature

## Weigh Stations (wgh)

The weigh stations layer (at a minimum) contains the Name and Address (if applicable) of each weigh station as well as the site type (permanent or portable scale).

### File Structure

Field Name	Field Size	Field Type	Field Description
POI_ID	Character	15	Unique ID (link to main EPOI database)
EPOI_TYPE	Character	3	Classification of the EPOI
DIRECTION	Character	2	Indicates the direction of road scale is on
HOURS	Character	20	Hours of operation
YEAR_ROUND	Logical		Year Round Operation
RESTROOM	Logical		Restrooms available
WGH_TYPE	Character	10	Weigh Station Point of Interest Classification
AVION401	Logical		Avion 401 automated clearance system

### Contents

DIRECTION	Description
N	North
S	South
E	East
W	West
O	Ouest
NS	North & South (can be accessed from either direction)
EW	East & West (can be accessed from either direction)

### WGH\_Type

Value	Description
Perm	Permanent Scale
Port	Portable Scale

## Appendix A: Importing EPOI Data in GIS Software

When importing the database please be sure to check that the X and Y fields are of the right type.

### MapInfo

#### Creating a MapInfo (.tab) table

1. Open MapInfo.
2. File > Open Table > Select *EPOI.txt* file and double-click.
3. In dialog box, for “Delimited ASCII Information” choose ‘Other’ (comma), the ‘File Character Set’ should be ‘Windows US & W. Europe (“ANSI”)’, and check off the ‘Use First Line for Column Titles’. **See Figure 1.**
4. Click OK.
5. File > Save Copy As...choose folder to save file.
6. Open the new .tab file.

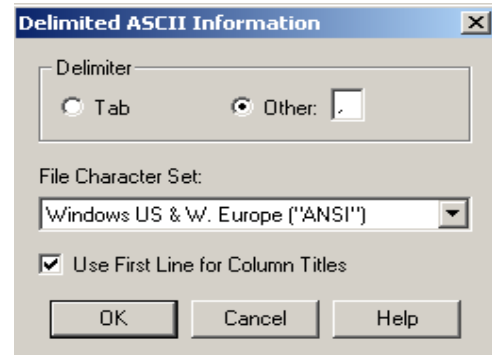


Figure 1: Delimited ASCII Information

#### Creating MapInfo Graphics from Coordinate Fields

7. Table > Create Points > Select *EPOI.tab* file
8. Adjust the symbol size, colour, and shape by selecting “Symbol Style”.
9. Choose the “x” field in the ‘Get X Coordinates from Column’ in the drop down box.
10. Choose the “y” field in the ‘Get Y Coordinates from Column’ in the drop down box.
11. Click on Projection, select the Category (Longitude/Latitude) and the Category Member (Longitude/Latitude (NAD83))
12. Click OK.

#### Creating MapInfo Lookup tables

13. Repeat steps 1 to 6

#### Linking the EPOI table to the EPOI Lookup tables

14. Open the EPOI table and the EPOI look up tables in MapInfo
15. Select Query > SQL select.
16. Click on “from Tables” box and click “Tables”, select the EPOI table and the look up table
17. Click on “where Condition” box, enter the condition so that the POI\_ID from each table is equal.
18. Click on “into Table Named” box and name the new file. **See Figure 2.**

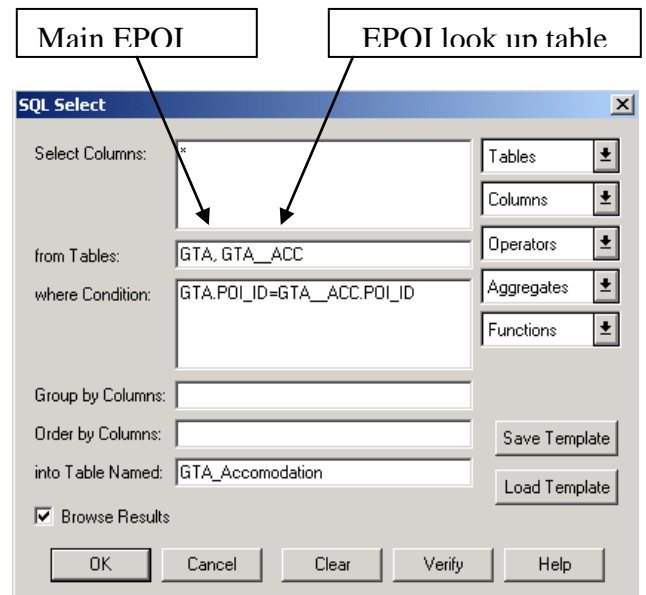


Figure 2: Linking the EPOI table to the EPOI Lookup tables

## ArcView 3.x

### Opening txt file(s) and making ArcView files (\*.shp)

1. Open ArcView > New Project as a blank project.
2. From the Project Window, click on 'Tables'. Click "Add". Change the 'List Files of Type' to "Delimited Text (\*.txt)", then navigate to the *EPOI.txt* file(s). Click OK.

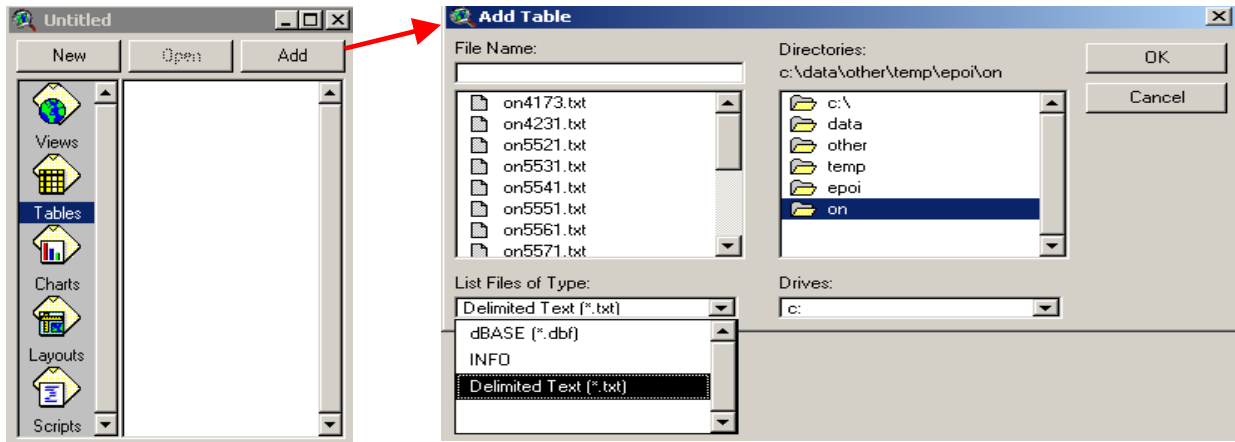


Figure 3: Creating ArcView files

### Creating Graphics from Coordinate Fields

3. In Project Window, click 'Views'. Press "New" to add a view.
4. Select View > Add Event Theme. Select the correct table, and X/Y coordinate fields from the *EPOI.txt* file. Click OK.
5. In the View select the *EPOI.txt* layer to make the layer active.
6. Select Theme > Convert to Shapefile > Navigate to the location where the files will be saved. Name the file and Click OK. When ArcView asks to add the shapefile as a theme to the view, Press YES. The new theme with the .shp extension will appear in the view.

### Creating Projection Datum Metadata (\*.prj files):

7. In the same project, from the Menu > File > Extensions. Scroll down to Projection Utility Wizard, click on the checkbox and Click OK.
8. File > ArcView Projection Utility. In Step 1, select the shape file and press Next. In Step 2, the 'Coordinate System Type' should be "Geographic". From the 'Name' dropdown box, select "GCS\_North\_American\_1983 [4269]", and the units in "Degree [9102]", then press Next. ArcView will ask to save the coordinate system information, press Yes and a Project file (\*.prj) will be created with the shape files. Cancel out of the Utility. To continue would actually re-project the files.

### Opening Lookup tables in ArcView:

9. In the same project, click from the Project Window – Tables. Press Add to bring in the lookup table. Click Open to see the database.
10. File – Export – this will convert the text file to a dBASE format for ArcView. Select the location to save and press OK.
11. The text version of the lookup table can be deleted from the project. Open the new dBASE file.
12. Repeat for each lookup table as required.

## Linking Lookup tables to the main EPOI table

To view the main EPOI table linked to the Look up tables, the files should be manually joined. To join the files use the following directions:

13. View both the main EPOI table and the Look up table (attribute tables)
14. Click on the POI\_ID fields from both the main EPOI table and the Look up table
15. Click on the Join button (or choose Join from the Table menu).
16. Additional Look up tables can be joined, so that many tables' attributes can be shown at one time.  
To undo the joins between the tables, click on the attribute table, making it active, and from the 'Table' menu select 'Remove All Joins'.

## ArcGIS 8.3

### Opening txt file(s) and Creating ArcMap files:

1. Start with a new empty map. Click OK.
2. File > Add Data > navigate to the EPOI.txt files and Click Add.

Note: "ON" is an SQL statement in ArcGIS and therefore ON.txt cannot be opened and must be renamed as ONT.txt. The renaming of this file will not affect the link to the Ontario lookup table.

### Creating Graphics from Coordinate Fields:

3. Tools > Add X, Y Data > choose the table and the X, Y fields.
4. Choose the coordinate system by clicking Edit. Then from 'Select Coordinate System', select Geographical Coordinate System, then North America, then North American Datum 1983. Click Add, then Apply, then OK. A project file (\*.prj) is created containing the coordinate information.
5. Make the event theme active (ie. EPOI.txt Events).
6. Right click on the 'Events' theme, choose 'Data', then 'Export Data'. Export all features. Click on the 'Use the same Coordinate System as the data frame' button. Browse to specify where the theme will be stored. Click OK.
7. ArcMap will ask to add the layer to the view. Click Yes. Remove the 'Events' theme.

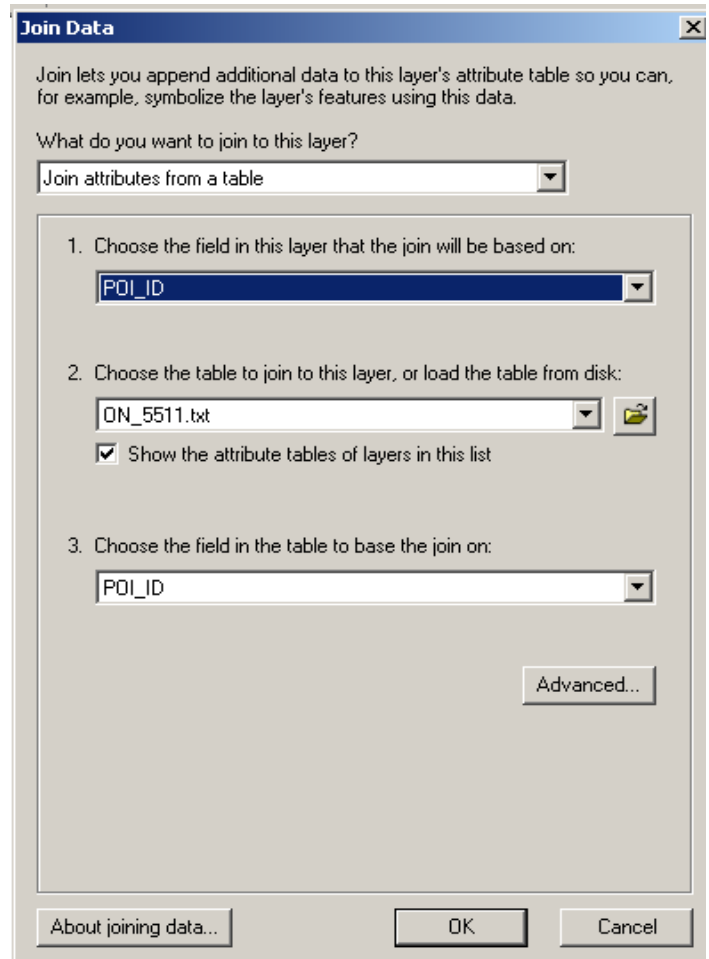


Figure 4: Creating graphics from coordinate fields

### Opening Lookup Tables in ArcMap

8. Repeat the first two steps under "Opening txt files and creating ArcMap files" to open the Lookup tables. Right click on the Lookup table and select 'Open' to view.

## Linking Lookup tables to the main EPOI table

To view the main EPOI table linked to the Look up tables, the files must be manually joined together.

9. Add both the main EPOI table and Lookup table to the Layers. Right click the Lookup table and select 'Joins and Relates' > 'Join'.
10. Choose the field the join will be based on (i.e. POI\_ID), then select the table to join too, and Click OK.



## Appendix B: Provincial and Territorial Abbreviations and Codes<sup>8</sup>

The provincial/territorial names, abbreviations and numeric codes reflect those in effect on January 1, 2001 with the exception of the name change of the province of Newfoundland and Labrador (previously Newfoundland), which came into effect on December 6, 2001. Newfoundland and Labrador was recognized by the alpha code NL (formerly NF). There were no changes to the numeric code (10) and abbreviations for Newfoundland and Labrador.

On April 1, 1999 the Northwest Territories was divided into two territories to create Nunavut Territory. The province/territory numeric code for Nunavut is 62 whereas the code for the Northwest Territories remained at 61. On December 18, 2000, Canada Post has introduced a new alpha code (NU) for Nunavut.

Province/Territory (English)	Province/Territory (French)	Abbreviation <sup>9</sup>	Numeric Code
Alberta	Alberta	AB	48
British Columbia	Colombie-Britannique	BC	59
Manitoba	Manitoba	MB	46
New Brunswick	Nouveau-Brunswick	NB	13
Newfoundland and Labrador	Terre-Neuve-et-Labrador	NL	10
Nova Scotia	Nouvelle-Écosse	NS	12
Northwest Territories	Territoires du Nord-Ouest	NT	61
Nunavut	Nunavut	NU	62
Ontario	Ontario	ON	35
Prince Edward Island	Île-du-Prince-Édouard	PE	11
Québec	Québec	QC	24
Saskatchewan	Saskatchewan	SK	47
Yukon	Yukon	YT	60

<sup>8</sup> Source: Statistics Canada, Standard Geographical Classification (SGC) 2001

<sup>9</sup> Source: Canada Post Corporation, The Canadian Addressing Guide, October 2002

## Appendix C: Canadian Urban Areas and Abbreviations

Canadian urban areas are based upon DMTI's topographic coverage areas. The following table is a partial list of urban areas and their abbreviations. For a complete listing of Canadian urban areas refer to the CANtop file located in the Canada Directory or for information regarding other areas contact DMTI Spatial.

Province	Topographic Coverage Area	Abbreviation
AB	Calgary	CLGRY
AB	Edmonton	EDMNT
BC	Vancouver	VNCVR
BC	Victoria	VCTRA
MB	Winnipeg	WINPG
NB	Fredericton	FRDTN
NB	Saint John	STJON
NL	Labrador City	LBDRG
NL	St. John's	STJHN
NS	Halifax	HALFX
NT	Yellowknife	YLKNF
NU	Iqaluit	IQALT
ON	Greater Toronto Area	GTA
ON	Hamilton Niagara	HAMNG
ON	Ottawa	OTAWA
PE	Charlottetown	CHLTN
QC	Hull	HULL
QC	Montreal	MNTRL
QC	Quebec City	QBCTY
SK	Regina	RGNA
YT	Whitehorse	WTHRS

## Appendix D: Standard Industrial Classification Codes

### What is an SIC Code?

Standard Industrial Classification (SIC) codes are four digit\* numerical codes that were established in 1987 by the U.S. Government. The codes were assigned to businesses to group and identify their primary area of business activity and to facilitate the collection of economic data for statistical analysis by federal, state, and private organizations. The SIC code classifications cover all economic related activities including agriculture, forestry & fishing; mining; construction; manufacturing; transportation, communications, electric, gas, and sanitary services; wholesale trade; retail trade; finance, insurance, real estate; health, education, recreation and other services; and public administration.

\* To accommodate for future changes to the SIC code DMTI has adopted a policy of representing the code with eight (8) characters. The four zeroes at the end of the code are a temporary space holder.

### SIC Division

SIC Division is represented by a single letter, for example Division G refers to Retail Trade. Each Division represents a broad area of economic activity:

Division	Description	SIC Range
A	Agriculture, Forestry, And Fishing	01 to 09
B	Mining	10 to 14
C	Construction	15 to 17
D	Manufacturing	20 to 39
E	Transportation, Communications, Electric, Gas, And Sanitary Services	40 to 49
F	Wholesale Trade	50 to 51
G	Retail Trade	52 to 59
H	Finance, Insurance, And Real Estate	60 to 67
I	Services	70 to 89
J	Public Administration	90 to 99
K	Unclassified	00

### SIC Major Group

SIC Major Group represents the first two digits of the code for example, Major Group 80 refers to Health Services. Each Major Group represents a sector or industry group:

Major Group	Description	SIC Range
01	Agricultural Production Crops	0111 to 0191
02	Agricultural Production Livestock And Animal Specialties	0211 to 0291
07	Agricultural Services	0711 to 0783
08	Forestry	0811 to 0851
09	Fishing, Hunting, And Trapping	0911 to 0971
10	Metal Mining	1011 to 1099
12	Coal Mining	1221 to 1241
13	Oil And Gas Extraction	1311 to 1389
14	Mining And Quarrying Of Nonmetallic Minerals, Except Fuels	1411 to 1499
15	Building Construction General Contractors And Operative Builders	1521 to 1542
16	Heavy Construction Other Than Building Construction Contractors	1611 to 1629

Major Group	Description	SIC Range
17	Construction Special Trade Contractors	1711 to 1799
20	Food And Kindred Products	2011 to 2099
21	Tobacco Products	2111 to 2141
22	Textile Mill Products	2211 to 2299
23	Apparel And Other Finished Products Made From Fabrics And Similar Materials	2311 to 2399
24	Lumber And Wood Products, Except Furniture	2411 to 2499
25	Furniture And Fixtures	2511 to 2599
26	Paper And Allied Products	2611 to 2679
27	Printing, Publishing, And Allied Industries	2711 to 2796
28	Chemicals And Allied Products	2812 to 2899
29	Petroleum Refining And Related Industries	2911 to 2999
30	Rubber And Miscellaneous Plastics Products	3011 to 3089
31	Leather And Leather Products	3111 to 3199
32	Stone, Clay, Glass, And Concrete Products	3211 to 3299
33	Primary Metal Industries	3312 to 3399
34	Fabricated Metal Products, Except Machinery And Transportation Equipment	3411 to 3499
35	Industrial And Commercial Machinery And Computer Equipment	3511 to 3599
36	Electronic And Other Electrical Equipment And Components, Except Computer Equipment	3612 to 3699
37	Transportation Equipment	3711 to 3799
38	Measuring, Analyzing, And Controlling Instruments; Photographic, Medical And Optical Goods; Watches And Clocks	3812 to 3873
39	Miscellaneous Manufacturing Industries	3911 to 3999
40	Major Group 40: Railroad Transportation	4011 to 4013
41	Local And Suburban Transit And Interurban Highway Passenger Transportation	4111 to 4173
42	Motor Freight Transportation And Warehousing	4212 to 4231
43	United States Postal Service	4311 to 4311
44	Water Transportation	4412 to 4499
45	Transportation By Air	4512 to 4581
46	Pipelines, Except Natural Gas	4612 to 4619
47	Transportation Services	4724 to 4789
48	Communications	4812 to 4899
49	Electric, Gas, And Sanitary Services	4911 to 4971
50	Wholesale Trade-durable Goods	5012 to 5099
51	Wholesale Trade-non-durable Goods	5111 to 5199
52	Building Materials, Hardware, Garden Supply, And Mobile Home Dealers	5211 to 5271
53	General Merchandise Stores	5311 to 5399
54	Food Stores	5411 to 5499
55	Automotive Dealers And Gasoline Service Stations	5511 to 5599
56	Apparel And Accessory Stores	5611 to 5699
57	Home Furniture, Furnishings, And Equipment Stores	5712 to 5736
58	Eating And Drinking Places	5812 to 5813
59	Miscellaneous Retail	5912 to 5999
60	Depository Institutions	6011 to 6099

Major Group	Description	SIC Range
61	Non-depository Credit Institutions	6111 to 6163
62	Security And Commodity Brokers, Dealers, Exchanges, And Services	6211 to 6289
63	Insurance Carriers	6311 to 6399
64	Insurance Agents, Brokers, And Service	6411 to 6411
65	Real Estate	6512 to 6553
67	Holding And Other Investment Offices	6712 to 6799
70	Hotels, Rooming Houses, Camps, And Other Lodging Places	7011 to 7041
72	Personal Services	7211 to 7299
73	Business Services	7311 to 7389
75	Automotive Repair, Services, And Parking	7513 to 7549
76	Miscellaneous Repair Services	7622 to 7699
78	Motion Pictures	7812 to 7841
79	Amusement And Recreation Services	7911 to 7999
80	Health Services	8011 to 8099
81	Legal Services	8111 to 8111
82	Educational Services	8211 to 8299
83	Social Services	8322 to 8399
84	Museums, Art Galleries, And Botanical And Zoological Gardens	8412 to 8422
86	Membership Organizations	8611 to 8699
87	Engineering, Accounting, Research, Management, And Related Services	8711 to 8748
88	Private Households	8811 to 8811
89	Miscellaneous Services	8999 to 8999
91	Executive, Legislative, And General Government, Except Finance	9111 to 9199
92	Justice, Public Order, And Safety	9111 to 9229
93	Public Finance, Taxation, And Monetary Policy	9311 to 9311
94	Administration Of Human Resource Programs	9411 to 9451
95	Administration Of Environmental Quality And Housing Programs	9511 to 9532
96	Administration Of Economic Programs	9611 to 9661
97	National Security And International Affairs	9711 to 9721
99	No classifiable Establishments	9999 to 9999
00	Unclassified	0000 to 0000

## SIC Code

SIC Code represents the four digits of the code, for example SIC Code 5431 refers to Fruit and Vegetable Markets. Each SIC Code represents specific products or services for a business.

For a more detailed description refer to the provided excel document SIC\_Description.xls that has a link to the SIC website and detailed explanation to provide easier decision-making.

SIC Code	Description of SIC Code
0134	Irish Potatoes
0161	Vegetables And Melons
0171	Berry Crops
0175	Deciduous Tree Fruits
0181	Ornamental Floriculture And Nursery Products
0182	Food Crops Grown Under Cover
0191	General Farms Primarily Crop
0211	Beef Cattle Feedlots

SIC Code	Description of SIC Code
0212	Beef Cattle Except Feedlots
0219	General Livestock Nec
0254	Poultry Hatcheries
0259	Poultry And Eggs Nec
0271	Fur-bearing Animals And Rabbits
0272	Horses And Other Equines
0273	Animal Aquaculture
0279	Animal Specialties Nec
0721	Crop Planting And Protection
0723	Crop Preparation Services For Market
0742	Veterinary Services For Animal Specialties
0751	Livestock Services Exc. Veterinary
0752	Animal Specialty Services
0761	Farm Labor Contractors
0762	Farm Management Services
0781	Landscape Counseling And Planning
0782	Lawn And Garden Services
0783	Ornamental Shrub And Tree Services
0811	Timber Tracts
0831	Forest Nurseries And Gathering Of Forest Products
0851	Forestry Services
0912	Finfish
0913	Shellfish
0919	Miscellaneous Marine Products
0921	Fish Hatcheries And Preserves
0971	Hunting Trapping Game Propagation
1000	Mining
1011	Iron Ores
1041	Gold Ores
1081	Metal Mining Services
1099	Metal Ores Nec
1221	Bituminous Coal And Lignite Surface Mining
1311	Crude Petroleum And Natural Gas
1381	Drilling Oil And Gas Wells
1382	Oil And Gas Exploration Services
1389	Oil And Gas Field Services Nec
1411	Dimension Stone
1422	Crushed And Broken Limestone
1423	Crushed And Broken Granite
1429	Crushed And Broken Stone Nec
1442	Construction Sand And Gravel
1499	Nonmetallic Minerals Nec
1521	Single-family Housing Construction
1541	Industrial Buildings And Warehouses
1542	Nonresidential Construction Nec
1611	Highway And Street Construction
1622	Bridge Tunnel And Elevated Highway

SIC Code	Description of SIC Code
1623	Water Sewer And Utility Lines
1629	Heavy Construction Nec
1711	Plumbing Heating Air Conditioning
1721	Painting And Paper Hanging
1731	Electrical Work
1741	Masonry And Other Stonework
1742	Plastering Dry Wall And Insulation
1743	Terrazzo Tile Marble Mosaic Work
1751	Carpentry Work
1752	Floor Laying And Floor Work Nec
1761	Roofing Siding And Sheet Metal Work
1771	Concrete Work
1781	Water Well Drilling
1791	Structural Steel Erection
1793	Glass And Glazing Work
1794	Excavation Work
1795	Wrecking And Demolition Work
1796	Installing Building Equipment Nec
1799	Special Trade Contractors Nec
2011	Meat Packing Plants
2013	Sausages And Other Prepared Meats
2021	Creamery Butter
2022	Cheese Natural And Processed
2023	Dry Condensed And Evaporated Milk
2024	Ice Cream And Frozen Desserts
2026	Fluid Milk
2032	Canned Specialties
2033	Canned Fruits Vegetables Preserves Jams And Jellies
2034	Dehydrated Fruits Vegetables Soups
2035	Pickles Sauces And Salad Dressings
2037	Frozen Fruits Juices And Vegetables
2041	Flour And Other Grain Mill Products
2043	Cereal Breakfast Foods
2044	Rice Milling
2045	Blended And Prepared Flour
2046	Wet Corn Milling
2047	Dog And Cat Food
2048	Prepared Feeds Nec
2051	Bread Cake And Related Products
2052	Cookies And Crackers
2062	Cane Sugar Refining
2064	Candy And Other Confectionery Products
2066	Chocolate And Cocoa Products
2067	Chewing Gum
2075	Soybean Oil Mills
2077	Animal And Marine Fats And Oils
2079	Shortening And Cooking Oils

SIC Code	Description of SIC Code
2082	Malt Beverages
2083	Malt
2084	Wines Brandy And Brandy Spirits
2085	Distilled And Blended Liquors
2086	Bottled And Canned Soft Drinks
2087	Flavoring Extracts And Syrups Nec
2091	Canned And Cured Fish And Seafoods
2092	Fresh Or Frozen Packaged Fish
2096	Potato Chips Corn Chips And Similar Snacks
2097	Manufactured Ice
2099	Food Preparations Nec
2111	Cigarettes
2211	Weaving Mills Cotton
2221	Weaving Mills Synthetic Fibres
2231	Weaving And Finishing Mills Wool
2241	Narrow Fabric Mills
2251	Women's Hosiery Except Socks
2253	Knit Outerwear Mills
2257	Circular Knit Fabric Mills
2258	Warp Knit Fabric Mills
2269	Finishing Plants Nec
2273	Carpets And Rugs
2281	Yarn Spinning Mills
2295	Coated Fabrics Not Rubberized
2297	Nonwoven Fabrics
2298	Cordage And Twine
2299	Textile Goods Nec
2311	Men's And Boys' Suits And Coats
2321	Men's And Boys' Shirts
2322	Men's And Boys' Underwear And Nightwear
2323	Men's And Boys' Neckwear
2325	Men's And Boys' Separate Trousers
2326	Men's And Boys' Work Clothing
2329	Men's And Boys' Clothing Nec
2331	Women's And Misses' Blouses And Waists
2335	Women's And Misses' Dresses
2337	Women's And Misses' Suits And Coats
2339	Women's And Misses' Outerwear Nec
2341	Women's And Children's Underwear And Nightwear
2342	Brassieres And Allied Garments
2353	Hats Caps And Millinery
2361	Girls' And Children's Dresses And Blouses
2371	Fur Goods
2381	Fabric Dress And Work Gloves
2385	Waterproof Outerwear
2386	Leather And Sheep Lined Clothing
2387	Apparel Belts



SIC Code	Description of SIC Code
2389	Apparel And Accessories Nec
2391	Curtains And Draperies
2392	House Furnishings Nec
2393	Textile Bags
2394	Canvas And Related Products
2395	Pleating And Stitching
2396	Automotive And Apparel Trimmings
2399	Fabricated Textile Products Nec
2411	Logging
2421	Sawmills And Planing Mills General
2426	Hardwood Dimension And Flooring
2429	Special Product Sawmills Nec
2431	Millwork
2435	Hardwood Veneer And Plywood
2439	Structural Wood Members Nec
2441	Nailed Wood Boxes And Shook
2448	Wood Pallets And Skids
2451	Mobile Homes
2452	Prefabricated Wood Buildings
2491	Wood Preserving
2493	Reconstituted Wood Products
2499	Wood Products Nec
2511	Wood Household Furniture
2515	Mattresses Foundations And Convertible Beds
2522	Metal Office Furniture
2531	Public Building And Related Furniture
2541	Wood Partitions And Fixtures
2542	Metal Partitions And Fixtures
2591	Drapery Hardware And Blinds And Shades
2599	Furniture And Fixtures Nec
2611	Pulp Mills
2621	Paper Mills
2631	Paperboard Mills
2652	Set-up Paperboard Boxes
2653	Corrugated And Solid Fiber Boxes
2655	Fiber Cans Drums And Similar Products
2657	Folding Paperboard Boxes
2672	Coated And Laminated Paper Nec
2673	Plastics Foil And Coated Paper Bags
2674	Uncoated Paper And Multiwall Bags
2676	Sanitary Paper Products
2677	Envelopes
2678	Stationery Tablets And Related Products
2679	Converted Paper And Paperboard Products Nec
2711	Newspapers
2721	Periodicals
2731	Book Publishing

SIC Code	Description of SIC Code
2741	Miscellaneous Publishing
2752	Commercial Printing Lithographic
2754	Commercial Printing Gravure
2759	Commercial Printing Nec
2761	Manifold Business Forms
2771	Greeting Cards
2782	Blankbooks And Looseleaf Binders
2789	Bookbinding And Related Work
2791	Typesetting
2796	Platemaking And Related Services
2812	Alkalies And Chlorine
2813	Industrial Gases
2816	Inorganic Pigments
2819	Industrial Inorganic Chemicals Nec
2821	Plastics Materials And Resins
2822	Synthetic Rubber
2833	Medicinal Chemicals And Botanical Products
2834	Pharmaceutical Preparations
2842	Polishes And Sanitation Goods
2844	Toilet Preparations
2851	Paints And Allied Products
2861	Gum And Wood Chemicals
2865	Cyclic Crudes And Intermediates
2869	Industrial Organic Chemicals Nec
2873	Nitrogenous Fertilizers
2879	Pesticides And Agricultural Chemicals Nec
2891	Adhesives And Sealants
2892	Explosives
2893	Printing Ink
2895	Carbon Black
2899	Chemical Preparations Nec
2911	Petroleum Refining
2951	Asphalt Paving Mixtures And Blocks
2992	Lubricating Oils And Greases
2999	Petroleum And Coal Products Nec
3011	Tires And Inner Tubes
3021	Rubber And Plastics Footwear
3052	Rubber And Plastic Hose And Belting
3053	Gaskets Packing And Sealing Devices
3061	Molded Extruded And Lathe-Cut Mechanical Rubber Products
3069	Fabricated Rubber Products Nec
3081	Unsupported Plastics Film And Sheet
3083	Laminated Plastics Plate Sheet And Profile Shapes
3084	Plastics Pipe
3086	Plastics Foam Products
3088	Plastics Plumbing Fixtures
3089	Plastics Products Nec

SIC Code	Description of SIC Code
3111	Leather Tanning And Finishing
3131	Footwear Cut Stock
3161	Luggage
3171	Women's Handbags And Purses
3172	Personal Leather Goods Nec
3199	Leather Goods Nec
3221	Glass Containers
3229	Pressed And Blown Glass Nec
3231	Products Of Purchased Glass
3241	Cement Hydraulic
3253	Ceramic Wall And Floor Tile
3255	Clay Refractories
3262	Vitreous China Table And Kitchen Articles
3264	Porcelain Electrical Supplies
3269	Pottery Products Nec
3271	Concrete Block And Brick
3272	Concrete Products Nec
3273	Ready-mixed Concrete
3274	Lime
3275	Gypsum Products
3281	Cut Stone And Stone Products
3291	Abrasive Products
3292	Asbestos Products
3295	Minerals and Earths, Ground or Otherwise Treated
3296	Mineral Wool
3299	Nonmetallic Mineral Products Nec
3312	Blast Furnaces And Steel Mills
3315	Steel Wire And Related Products
3316	Cold Finishing Of Steel Shapes
3317	Steel Pipe And Tubes
3321	Gray Iron Foundries
3324	Steel Investment Foundries
3325	Steel Foundries Nec
3331	Primary Copper
3334	Primary Aluminum
3339	Primary Nonferrous Metals Nec
3341	Secondary Smelting And Refining Of Nonferrous Metals
3351	Copper Rolling And Drawing
3353	Aluminum Sheet Plate And Foil
3355	Aluminum Rolling And Drawing Nec
3356	Nonferrous Rolling And Drawing Nec
3364	Nonferrous Die-Castings Except Aluminum
3398	Metal Heat Treating
3399	Primary Metal Products Nec
3411	Metal Cans
3412	Metal Barrels Drums And Pails
3421	Cutlery

SIC Code	Description of SIC Code
3423	Hand And Edge Tools Nec
3429	Hardware Nec
3431	Metal Sanitary Ware
3432	Plumbing Fittings And Brass Goods
3433	Heating Equipment Except Electric
3441	Fabricated Structural Metal
3442	Metal Doors Sash And Trim
3443	Fabricated Plate Work (Boiler Shops)
3444	Sheet Metal Work
3446	Architectural Metal Work
3448	Prefabricated Metal Buildings
3449	Miscellaneous Metal Work
3451	Screw Machine Products
3452	Bolts Nuts Rivets And Washers
3462	Iron And Steel Forgings
3463	Nonferrous Forgings
3466	Crowns And Closures
3469	Metal Stampings Nec
3471	Plating And Polishing
3479	Coating Engraving And Allied Services
3484	Small Arms
3491	Industrial Valves
3492	Fluid Power Valves And Hose Fittings
3494	Valves And Pipe Fittings Nec
3495	Wire Springs
3496	Misc. Fabricated Wire Products
3498	Fabricated Pipe And Fittings
3499	Fabricated Metal Products Nec
3511	Turbines And Turbine Generator Sets
3519	Internal Combustion Engines Nec
3523	Farm Machinery And Equipment
3531	Construction Machinery
3533	Oil And Gas Field Machinery
3535	Conveyors And Conveying Equipment
3536	Hoists Cranes And Monorails
3537	Industrial Trucks And Tractors
3541	Machine Tools Metal Cutting Types
3542	Machine Tools Metal Forming Types
3543	Industrial Patterns
3544	Special Dies Tools Jigs And Fixtures
3545	Machine Tool Accessories
3546	Power Driven Hand Tools
3548	Welding Equipment
3549	Metalworking Machinery Nec
3552	Textile Machinery
3553	Woodworking Machinery
3554	Paper Industries Machinery

SIC Code	Description of SIC Code
3555	Printing Trades Machinery
3556	Food Products Machinery
3559	Special Industry Machinery Nec
3564	Blowers And Fans
3565	Packaging Machinery
3566	Speed Changers Drives And Gears
3567	Industrial Furnaces And Ovens
3568	Power Transmission Equipment Nec
3569	General Industrial Machinery Nec
3571	Electronic Computers
3577	Computer Peripheral Equipment Nec
3579	Office Machines Nec
3581	Automatic Vending Machines
3582	Commercial Laundry Equipment
3585	Refrigeration And Heating Equipment
3589	Service Industry Machinery Nec
3599	Machinery Except Electrical Nec
3612	Transformers
3613	Switchgear And Switchboard Apparatus
3621	Motors And Generators
3624	Carbon And Graphite Products
3625	Relays And Industrial Controls
3629	Electrical Industrial Apparatus Nec
3631	Household Cooking Equipment
3632	Household Refrigerators And Freezers
3633	Household Laundry Equipment
3634	Electric Housewares And Fans
3635	Household Vacuum Cleaners
3639	Household Appliances Nec
3641	Electric Lamps Bulbs And Tubes
3643	Current-carrying Wiring Devices
3644	Noncurrent-carrying Wiring Devices
3645	Residential Lighting Fixtures
3646	Commercial Lighting Fixtures
3648	Lighting Equipment Nec
3652	Phonograph Records And Prerecorded Audio Tapes And Disks
3661	Telephone And Telegraph Apparatus
3663	Radio And TV Broadcasting Equipment
3669	Communications Equipment Nec
3672	Printed Circuit Boards
3674	Semiconductors And Related Devices
3675	Electronic Capacitors
3676	Electronic Resistors
3679	Electronic Components Nec
3694	Engine Electrical Equipment
3695	Magnetic And Optical Recording Media
3699	Electrical Equipment And Supplies Nec

SIC Code	Description of SIC Code
3711	Motor Vehicles And Car Bodies
3713	Truck And Bus Bodies
3714	Motor Vehicle Parts And Accessories
3715	Truck Trailers
3721	Aircraft
3724	Aircraft Engines And Engine Parts
3728	Aircraft Equipment Nec
3731	Ship Building And Repairing
3732	Boat Building And Repairing
3743	Railroad Equipment
3751	Motorcycles Bicycles And Parts
3769	Space Vehicle Equipment Nec
3792	Travel Trailers And Campers
3799	Transportation Equipment Nec
3812	Search And Navigation Equipment
3822	Environmental Controls
3823	Process Control Instruments
3824	Fluid Meters And Counting Devices
3825	Instruments To Measure Electricity
3827	Optical Instruments And Lenses
3829	Measuring And Controlling Devices Nec
3842	Surgical Appliances And Supplies
3844	X-Ray Apparatus And Tubes
3845	Electromedical Apparatus
3851	Ophthalmic Goods
3861	Photographic Equipment And Supplies
3873	Watches Clocks And Watchcases
3911	Jewelry Precious Metal
3914	Silverware and Plated Ware
3915	Jewelers' Materials And Lapidary Work
3931	Musical Instruments
3944	Games Toys And Children's Vehicles
3949	Sporting And Athletic Goods Nec
3951	Pens And Mechanical Pencils
3953	Marking Devices
3955	Carbon Paper And Inked Ribbons
3961	Costume Jewelry
3965	Fasteners Buttons Needles And Pins
3991	Brooms And Brushes
3993	Signs And Advertising Displays
3995	Burial Caskets
3996	Hard Surface Floor Coverings
3999	Manufacturing Industries Nec
4011	Railroads Line-haul Operating
4111	Local And Suburban Transit
4119	Local Passenger Transportation Nec
4121	Taxicabs

SIC Code	Description of SIC Code
4131	Intercity Highway Transportation
4142	Charter Service Except Local
4212	Local Trucking Without Storage
4213	Trucking Except Local
4214	Local Trucking And Storage
4215	Courier Services Except By Air
4221	Farm Product Warehousing And Storage
4222	Refrigerated Warehousing
4225	General Warehousing And Storage
4226	Special Warehousing And Storage Nec
4311	Canadian Postal Service
4412	Deep Sea Foreign Transportation Of Freight
4449	Water Transportation Of Freight Nec
4482	Ferries
4489	Water Transportation Of Passengers Nec
4491	Marine Cargo Handling
4492	Towing and Tugboat Services
4493	Marinas
4499	Water Transportation Services Nec
4512	Air Transportation Scheduled
4513	Air Courier Services
4522	Air Transportation Nonscheduled
4581	Airports Flying Fields And Airport Terminal Services
4619	Pipelines Nec
4724	Travel Agencies
4725	Tour Operators
4729	Arrangement Of Passenger Transportation Nec
4731	Arrangement Of Transportation Of Freight And Cargo
4741	Rental Of Railroad Cars
4783	Packing And Crating
4785	Inspection And Weighing Services For Motor Vehicles
4789	Transportation Services Nec
4812	Radiotelephone Communications
4813	Telephone Communications Except Radiotelephone
4822	Telegraph And Other Message Communications
4832	Radio Broadcasting
4833	Television Broadcasting
4841	Cable And Other Pay Television Services
4899	Communications Services Nec
4911	Electric Services
4925	Gas Production And/Or Distribution
4941	Water Supply
4953	Refuse Systems
4959	Sanitary Services Nec
4961	Steam Supply
5012	Automobiles And Other Motor Vehicles
5013	Automotive Parts And Supplies

SIC Code	Description of SIC Code
5014	Tires And Tubes
5015	Motor Vehicles Parts Used
5021	Furniture
5023	Home Furnishings
5031	Lumber Plywood And Millwork
5032	Brick Stone And Related Construction Materials
5033	Roofing Siding And Insulation Materials
5039	Construction Materials Nec
5043	Photographic Equipment And Supplies
5044	Office Equipment
5045	Computer Equipment And Software
5046	Commercial Equipment Nec
5047	Medical Dental And Hospital Equipment And Supplies
5048	Ophthalmic Goods
5049	Professional Equipment Nec
5051	Metals Service Centers And Offices
5052	Coal And Other Minerals And Ores
5063	Electrical Apparatus And Equipment
5064	Electrical Appliances TV And Radios
5065	Electronic Parts And Equipment
5072	Hardware
5074	Plumbing And Hydronic Heating Supplies
5075	Warm Air Heating And Air Conditioning
5078	Refrigeration Equipment And Supplies
5082	Construction And Mining Machinery
5083	Farm And Garden Machinery And Equipment
5084	Industrial Machinery And Equipment
5085	Industrial Supplies
5087	Service Establishment Equipment And Supplies
5088	Transportation Equipment And Supplies
5091	Sporting And Recreational Goods And Supplies
5092	Toys And Hobby Goods And Supplies
5093	Scrap And Waste Materials
5094	Jewelry Watches And Precious Stones
5099	Durable Goods Nec
5111	Printing And Writing Paper
5112	Stationery And Office Supplies
5113	Industrial And Personal Service Paper
5122	Drugs Proprietaries And Sundries
5131	Piece Goods Notions And Other Dry Goods
5137	Women's And Children's Clothing
5139	Footwear
5141	Groceries General Line
5142	Packaged Frozen Foods
5143	Dairy Products
5144	Poultry And Poultry Products
5145	Confectionery



SIC Code	Description of SIC Code
5146	Fish And Seafoods
5147	Meats And Meat Products
5148	Fresh Fruits and Vegetables
5149	Groceries And Related Products Nec
5153	Grain And Field Beans
5154	Livestock
5159	Farm-product Raw Materials Nec
5162	Plastics Materials And Basic Forms And Shapes
5169	Chemicals And Allied Products Nec
5172	Petroleum Products Nec
5182	Wines And Distilled Beverages
5191	Farm Supplies
5192	Books Periodicals And Newspapers
5193	Flowers Nursery Stock And Florists' Supplies
5194	Tobacco And Tobacco Products
5199	Nondurable Goods Nec
5211	Lumber And Other Building Materials
5231	Paint Glass And Wallpaper Stores
5251	Hardware Stores
5261	Retail Nurseries And Garden Stores
5271	Mobile Home Dealers
5311	Department Stores
5331	Variety Stores
5399	Misc. General Merchandise Stores
5411	Grocery Stores
5421	Meat And Fish Markets
5431	Fruit And Vegetable Markets
5441	Candy Nut And Confectionery Stores
5451	Dairy Products Stores
5461	Retail Bakeries
5499	Miscellaneous Food Stores
5511	New Car Dealers
5521	Used Car Dealers
5531	Auto And Home Supply Stores
5541	Gasoline Service Stations
5551	Boat Dealers
5561	Recreational Vehicles Dealers
5571	Motorcycle Dealers
5599	Automotive Dealers Nec
5611	Men's And Boys' Clothing And Furnishings
5621	Women's Clothing Stores
5632	Women's Accessory And Specialty Stores
5641	Children's And Infants' Wear Stores
5651	Family Clothing Stores
5661	Shoe Stores
5699	Miscellaneous Apparel And Accessories
5712	Furniture Stores

<b>SIC Code</b>	<b>Description of SIC Code</b>
5713	Floor Covering Stores
5714	Drapery And Upholstery Stores
5719	Misc. Home Furnishings Stores
5722	Household Appliance Stores
5731	Radio Television And Consumer Electronics Stores
5734	Computer And Computer Software Stores
5735	Record And Pre Recorded Tape Stores
5736	Musical Instrument Stores
5812	Eating Places
5813	Drinking Places
5912	Drug Stores And Proprietary Stores
5921	Liquor Stores
5932	Used Merchandise Stores
5941	Sporting Goods And Bicycle Shops
5942	Book Stores
5943	Stationery Stores
5944	Jewelry Stores
5945	Hobby Toy And Game Shops
5946	Camera And Photographic Supply Stores
5947	Gift Novelty And Souvenir Shops
5948	Luggage And Leather Goods Stores
5949	Sewing Needlework And Piece Goods
5961	Catalog And Mail Order Houses
5962	Automatic Merchandising Machine Operators
5963	Direct Selling Organizations
5984	Liquefied Petroleum Gas Dealers
5989	Fuel Dealers Nec
5992	Florists
5993	Tobacco Stores And Stands
5994	News Dealers And Newsstands
5995	Optical Goods Stores
5999	Miscellaneous Retail Stores Nec
6011	Federal Reserve Banks
6021	National Commercial Banks
6022	State Commercial Banks
6061	Credit Unions Federally Chartered
6062	Credit Unions Not Federally Chartered
6099	Functions Related To Depository Banking Nec
6141	Personal Credit Institutions
6153	Short-term Business Credit
6159	Misc. Business Credit Institutions
6162	Mortgage Bankers And Correspondents
6211	Security Brokers And Dealers
6221	Commodity Contracts Brokers Dealers
6231	Security And Commodity Exchanges
6282	Investment Advice
6289	Services Allied With The Exchange Of Securities Or Commodities Nec

SIC Code	Description of SIC Code
6311	Life Insurance
6324	Hospital And Medical Service Plans
6331	Fire Marine And Casualty Insurance
6351	Surety Insurance
6371	Pension Health And Welfare Funds
6399	Insurance Carriers Nec
6411	Insurance Agents Brokers And Service
6512	Nonresidential Building Operators
6513	Apartment Building Operators
6515	Mobile Home Site Operators
6531	Real Estate Agents And Managers
6541	Title Abstract Offices
6552	Land Subdividers And Developers Except Cemeteries
6553	Cemetery Subdividers And Developers
6719	Holding Companies Nec
6732	Educational Religious Etc. Trusts
6733	Trusts Nec
6792	Oil Royalty Traders
6794	Patent Owners And Lessors
6798	Real Estate Investment Trusts
6799	Investors Nec
7011	Hotels And Motels
7021	Rooming And Boarding Houses
7032	Sporting And Recreational Camps
7033	Recreational Vehicle Parks And Campsites
7200	Personal Services
7211	Power Laundries Family And Commercial
7212	Garment Pressing And Cleaners' Agents
7213	Linen Supply
7215	Coin-operated Laundries And Cleaning
7216	Dry Cleaning Plants Except Rug
7217	Carpet And Upholstery Cleaning
7219	Laundry And Garment Services Nec
7221	Photographic Studios Portrait
7231	Beauty Shops
7241	Barber Shops
7251	Shoe Repair Shops And Shoeshine Parlors
7261	Funeral Service And Crematories
7291	Tax Return Preparation Service
7299	Miscellaneous Personal Services Nec
7311	Advertising Agencies
7312	Outdoor Advertising Services
7313	Radio TV Publisher Representatives
7319	Advertising Nec
7322	Adjustment And Collection Services
7323	Credit Reporting Services
7331	Direct Mail Advertising Services

SIC Code	Description of SIC Code
7334	Photocopying And Duplicating Service
7335	Commercial Photography
7336	Commercial Art And Graphic Design
7338	Secretarial And Court Reporting Services
7342	Disinfecting And Pest Control Services
7349	Building Maintenance Services Nec
7352	Medical Equipment Rental And Leasing
7353	Heavy Construction Equipment Rental And Leasing
7359	Equipment Rental And Leasing Nec
7361	Employment Agencies
7363	Help Supply Services
7371	Computer Programming Services
7372	Computer Programming And Software
7373	Computer Integrated Systems Design
7374	Data Processing Services
7375	Information Retrieval Services
7376	Computer Facilities Management Services
7377	Computer Rental And Leasing
7378	Computer Maintenance And Repair
7379	Computer Related Services Nec
7381	Detective Guard And Armored Car Service
7382	Security Systems Services
7383	News Syndicates
7384	Photofinishing Laboratories
7389	Business Services Nec
7513	Truck Rental And Leasing Without Drivers
7514	Passenger Car Rental
7515	Passenger Car Leasing
7519	Recreation Vehicle And Trailer Rental
7521	Automobile Parking
7532	Top Body Upholstery Repair Shops And Paint Shops
7533	Automotive Exhaust System Repair Shops
7534	Tire Retreading And Repair Shops
7536	Automotive Glass Replacement Shops
7537	Automotive Transmission Repair Shops
7538	General Automotive Repair Shops
7539	Automotive Repair Shops Nec
7542	Car Washes
7549	Automotive Services Nec
7622	Radio And Television Repair
7623	Refrigeration Service And Repair
7629	Electrical Repair Shops Nec
7631	Watch Clock And Jewelry Repair
7641	Reupholstery And Furniture Repair
7692	Welding Repair
7694	Armature Rewinding Shops
7699	Repair Services Nec

SIC Code	Description of SIC Code
7812	Motion Picture And Video Tape Production
7819	Services Allied To Motion Picture Production
7822	Motion Picture And Video Tape Distribution
7832	Motion Picture Theaters Ex Drive-in
7833	Drive-in Motion Picture Theaters
7841	Video Tape Rental
7911	Dance Studios Schools And Halls
7922	Theatrical Producers And Services
7929	Entertainers And Entertainment Groups
7933	Bowling Centers
7941	Professional Sports Clubs And Promoters
7948	Racing Including Track Operation
7991	Physical Fitness Facilities
7992	Public Golf Courses
7993	Coin-operated Amusement Devices
7997	Membership Sports And Recreation Clubs
7999	Amusement And Recreation Nec
8011	Offices And Clinics Of Physicians
8021	Offices And Clinics Of Dentists
8031	Offices Of Osteopathic Physicians
8041	Offices Of Chiropractors
8042	Offices Of Optometrists
8043	Offices Of Podiatrists
8049	Offices Of Health Practitioners Nec
8059	Nursing And Personal Care Nec
8062	General Medical And Surgical Hospitals
8063	Psychiatric Hospitals
8069	Specialty Hospitals Exc Psychiatric
8071	Medical Laboratories
8072	Dental Laboratories
8082	Home Health Care Services
8093	Specialty Outpatient Facilities Nec
8099	Health And Allied Services Nec
8111	Legal Services
8211	Elementary And Secondary Schools
8221	Colleges And Universities
8222	Junior Colleges and Technical Institutes
8231	Libraries
8243	Data Processing Schools
8244	Business And Secretarial Schools
8249	Vocational Schools Nec
8299	Schools And Educational Services Nec
8322	Individual And Family Social Services
8331	Job Training and Vocational Rehabilitation Services
8351	Child Day Care Services
8361	Residential Care
8399	Social Services Nec

SIC Code	Description of SIC Code
8412	Museums And Art Galleries
8422	Botanical And Zoological Gardens
8611	Business Associations
8621	Professional Organizations
8631	Labor Organizations
8641	Civic And Social Associations
8651	Political Organizations
8661	Religious Organizations
8699	Membership Organizations Nec
8711	Engineering Services
8712	Architectural Services
8713	Surveying Services
8721	Accounting Auditing And Bookkeeping Services
8731	Commercial Physical And Biological Research
8732	Commercial Economic Sociological And Educational Research
8733	Non Commercial Research Organizations
8734	Testing Laboratories
8741	Management Services
8742	Management Consulting Services
8743	Public Relations Services
8748	Business Consulting Services Nec
8811	Private Households
8999	Services Nec
9111	Government Of Canada
9121	Legislative Bodies
9211	Courts
9212	Government Of Prince Edward Island
9213	Government Of Nova Scotia
9214	Government Of New Brunswick
9221	Police Protection
9224	Fire Protection
9235	Government Of Ontario
9246	Government Of Manitoba
9247	Government Of Saskatchewan
9248	Government Of Alberta
9259	Government Of British Columbia
9262	Government Of Northwest Territories
9263	Government Of Nunavut
9311	Public Finance, Taxation, and Monetary Policy
9312	City Of Montréal
9721	International Affairs
9999	Unclassified

## Appendix E: NAICS Codes

---

### What is an NAICS Code?

The North American Industry Classification System (NAICS) is the standard used by Federal statistical agencies in classifying business establishments for the purpose of collecting, analyzing, and publishing statistical data related to the U.S. business economy. The NAICS take the place of the SIC codes which are still used by less frequently for searching.

The NAIC code classifications cover all economic related activities including agriculture, forestry & fishing; mining; construction; manufacturing; transportation, communications, electric, gas, and sanitary services; wholesale trade; retail trade; finance, insurance, real estate; health, education, recreation and other services; and public administration.

### NAIC Major Group

NAIC Major Group represents the first two digits of the code for example, Each Major Group represents a sector or industry group:

Major Group	Description
11	Agriculture, Forestry, Fishing and Hunting
21	Mining and Oil and Gas Extraction
22	Utilities
23	Construction
31-33	Manufacturing
41	Wholesale Trade
44-45	Retail Trade
48-49	Transportation and Warehousing
51	Information and Cultural Industries
52	Finance and Insurance
53	Real Estate and Rental and Leasing
54	Professional, Scientific and Technical Services
55	Management of Companies and Enterprises
56	Administrative and Support, Waste Management and Remediation Services
61	Educational Services
62	Health Care and Social Assistance
71	Arts, Entertainment and Recreation
72	Accommodation and Food Services
81	Other Services (except Public Administration)
91	Public Administration

## NAICS Code

NAICS Code represents the five or six digits of the code. Each NAICS Code represents specific products or services for a business.

NAICS	NAICS Description
111199	ALL OTHER GRAIN FARMING
111211	POTATO FARMING
111219	OTHER VEGETABLE (EXCEPT POTATO) AND MELON FARMING
111419	OTHER FOOD CROPS GROWN UNDER COVER
111421	NURSERY AND TREE PRODUCTION
111422	FLORICULTURE PRODUCTION
111998	ALL OTHER MISCELLANEOUS CROP FARMING
112111	BEEF CATTLE RANCHING AND FARMING
11234	POULTRY HATCHERIES
112511	FINFISH FARMING AND FISH HATCHERIES
11291	APICULTURE
11292	HORSE AND OTHER EQUINE PRODUCTION
11293	FUR-BEARING ANIMAL AND RABBIT PRODUCTION
11299	ALL OTHER ANIMAL PRODUCTION
11311	TIMBER TRACT OPERATIONS
11321	FOREST NURSERIES AND GATHERING OF FOREST PRODUCTS
11331	LOGGING
114111	FINFISH FISHING
114112	SHELLFISH FISHING
11421	HUNTING AND TRAPPING
115112	SOIL PREPARATION, PLANTING, AND CULTIVATING
115114	POSTHARVEST CROP ACTIVITIES (EXCEPT COTTON GINNING)
115116	FARM MANAGEMENT SERVICES
11521	SUPPORT ACTIVITIES FOR ANIMAL PRODUCTION
11531	SUPPORT ACTIVITIES FOR FORESTRY
211111	CRUDE PETROLEUM AND NATURAL GAS EXTRACTION
211112	NATURAL GAS LIQUID EXTRACTION
212111	BITUMINOUS COAL AND LIGNITE SURFACE MINING
212299	ALL OTHER METAL ORE MINING
212321	CONSTRUCTION SAND AND GRAVEL MINING
212399	ALL OTHER NONMETALLIC MINERAL MINING
213111	DRILLING OIL AND GAS WELLS
213112	SUPPORT ACTIVITIES FOR OIL AND GAS OPERATIONS
213114	SUPPORT ACTIVITIES FOR METAL MINING
221111	HYDROELECTRIC POWER GENERATION
221112	FOSSIL FUEL ELECTRIC POWER GENERATION
221119	OTHER ELECTRIC POWER GENERATION
22121	NATURAL GAS DISTRIBUTION
22131	WATER SUPPLY AND IRRIGATION SYSTEMS
22132	SEWAGE TREATMENT FACILITIES
22133	STEAM AND AIR-CONDITIONING SUPPLY
23311	LAND SUBDIVISION AND LAND DEVELOPMENT



NAICS	NAICS Description
23321	SINGLE FAMILY HOUSING CONSTRUCTION
23322	MULTIFAMILY HOUSING CONSTRUCTION
23331	MANUFACTURING AND INDUSTRIAL BUILDING CONSTRUCTION
23332	COMMERCIAL AND INSTITUTIONAL BUILDING CONSTRUCTION
23411	HIGHWAY AND STREET CONSTRUCTION
23412	BRIDGE AND TUNNEL CONSTRUCTION
23491	WATER, SEWER, AND PIPELINE CONSTRUCTION
23492	POWER AND COMMUNICATION TRANSMISSION LINE CONSTRUCTION
23493	INDUSTRIAL NONBUILDING STRUCTURE CONSTRUCTION
23499	ALL OTHER HEAVY CONSTRUCTION
23511	PLUMBING, HEATING, AND AIR-CONDITIONING CONTRACTORS
23521	PAINTING AND WALL COVERING CONTRACTORS
23531	ELECTRICAL CONTRACTORS
23541	MASONRY AND STONE CONTRACTORS
23542	DRYWALL, PLASTERING, ACOUSTICAL, AND INSULATION CONTRACTORS
23543	TILE, MARBLE, TERRAZZO, AND MOSAIC CONTRACTORS
23551	CARPENTRY CONTRACTORS
23552	FLOOR LAYING AND OTHER FLOOR CONTRACTORS
23561	ROOFING, SIDING, AND SHEET METAL CONTRACTORS
23571	CONCRETE CONTRACTORS
23581	WATER WELL DRILLING CONTRACTORS
23591	STRUCTURAL STEEL ERECTION CONTRACTORS
23592	GLASS AND GLAZING CONTRACTORS
23593	EXCAVATION CONTRACTORS
23594	WRECKING AND DEMOLITION CONTRACTORS
23595	BUILDING EQUIPMENT AND OTHER MACHINERY INSTALLATION CONTRACTORS
23599	ALL OTHER SPECIAL TRADE CONTRACTORS
311119	OTHER ANIMAL FOOD MANUFACTURING
311211	FLOUR MILLING
311221	WET CORN MILLING
311222	SOYBEAN PROCESSING
311225	FATS AND OILS REFINING AND BLENDING
311312	CANE SUGAR REFINING
31132	CHOCOLATE AND CONFECTIONERY MANUFACTURING FROM CACAO BEANS
31134	NONCHOCOLATE CONFECTIONERY MANUFACTURING
311411	FROZEN FRUIT, JUICE, AND VEGETABLE MANUFACTURING
311412	FROZEN SPECIALTY FOOD MANUFACTURING
311421	FRUIT AND VEGETABLE CANNING
311422	SPECIALTY CANNING
311423	DRIED AND DEHYDRATED FOOD MANUFACTURING
311511	FLUID MILK MANUFACTURING
31152	ICE CREAM AND FROZEN DESSERT MANUFACTURING
311611	ANIMAL (EXCEPT POULTRY) SLAUGHTERING
311612	MEAT PROCESSED FROM CARCASSES

NAICS	NAICS Description
311613	RENDERING AND MEAT BYPRODUCT PROCESSING
311711	SEAFOOD CANNING
311712	FRESH AND FROZEN SEAFOOD PROCESSING
311811	RETAIL BAKERIES
311812	COMMERCIAL BAKERIES
311813	FROZEN CAKES, PIES, AND OTHER PASTRIES MANUFACTURING
311821	COOKIE AND CRACKER MANUFACTURING
311823	DRY PASTA MANUFACTURING
311911	ROASTED NUTS AND PEANUT BUTTER MANUFACTURING
311919	OTHER SNACK FOOD MANUFACTURING
31193	FLAVORING SYRUP AND CONCENTRATE MANUFACTURING
311941	MAYONNAISE, DRESSING, AND OTHER PREPARED SAUCE MANUFACTURING
311991	PERISHABLE PREPARED FOOD MANUFACTURING
311999	ALL OTHER MISCELLANEOUS FOOD MANUFACTURING
312111	SOFT DRINK MANUFACTURING
31212	BREWERIES
31213	WINERIES
31214	DISTILLERIES
313111	YARN SPINNING MILLS
31321	BROADWOVEN FABRIC MILLS
313221	NARROW FABRIC MILLS
313222	SCHIFFLI MACHINE EMBROIDERY
313249	OTHER KNIT FABRIC AND LACE MILLS
313312	TEXTILE AND FABRIC FINISHING (EXCEPT BROADWOVEN FABRIC) MILLS
314129	OTHER HOUSEHOLD TEXTILE PRODUCT MILLS
314911	TEXTILE BAG MILLS
314912	CANVAS AND RELATED PRODUCT MILLS
314991	ROPE, CORDAGE, AND TWINE MILLS
314992	TIRE CORD AND TIRE FABRIC MILLS
314999	ALL OTHER MISCELLANEOUS TEXTILE PRODUCT MILLS
315	APPAREL MANUFACTURING
315191	OUTERWEAR KNITTING MILLS
315211	MEN'S AND BOYS' CUT AND SEW APPAREL CONTRACTORS
315212	WOMEN'S, GIRLS', AND INFANTS' CUT AND SEW APPAREL CONTRACTORS
315221	MEN'S AND BOYS' CUT AND SEW UNDERWEAR AND NIGHTWEAR MANUFACTURING
315223	MEN'S AND BOYS' CUT AND SEW SHIRT (EXCEPT WORK SHIRT) MANUFACTURING
315225	MEN'S AND BOYS' CUT AND SEW WORK CLOTHING MANUFACTURING
315228	MEN'S AND BOYS' CUT AND SEW OTHER OUTERWEAR MANUFACTURING
315231	WOMEN'S AND GIRLS' CUT AND SEW LINGERIE, LOUNGEWEAR, AND NIGHTWEAR MANUFACTURING

NAICS	NAICS Description
315232	WOMEN'S AND GIRLS' CUT AND SEW BLOUSE AND SHIRT MANUFACTURING
315234	WOMEN'S AND GIRLS' CUT AND SEW SUIT, COAT, TAILORED JACKET, AND SKIRT MANUFACTURING
315292	FUR AND LEATHER APPAREL MANUFACTURING
315299	ALL OTHER CUT AND SEW APPAREL MANUFACTURING
315991	HAT, CAP, AND MILLINERY MANUFACTURING
315992	GLOVE AND MITTEN MANUFACTURING
315999	OTHER APPAREL ACCESSORIES AND OTHER APPAREL MANUFACTURING
31611	LEATHER AND HIDE TANNING AND FINISHING
316213	MEN'S FOOTWEAR (EXCEPT ATHLETIC) MANUFACTURING
316991	LUGGAGE MANUFACTURING
316992	WOMEN'S HANDBAG AND PURSE MANUFACTURING
316993	PERSONAL LEATHER GOOD (EXCEPT WOMEN'S HANDBAG AND PURSE) MANUFACTURING
316999	ALL OTHER LEATHER GOOD MANUFACTURING
321113	SAWMILLS
321114	WOOD PRESERVATION
321213	ENGINEERED WOOD MEMBER (EXCEPT TRUSS) MANUFACTURING
321214	TRUSS MANUFACTURING
321911	WOOD WINDOW AND DOOR MANUFACTURING
321912	CUT STOCK, RESAWING LUMBER, AND PLANING
321918	OTHER MILLWORK (INCLUDING FLOORING)
32192	WOOD CONTAINER AND PALLET MANUFACTURING
321991	MANUFACTURED HOME (MOBILE HOME) MANUFACTURING
321992	PREFABRICATED WOOD BUILDING MANUFACTURING
321999	ALL OTHER MISCELLANEOUS WOOD PRODUCT MANUFACTURING
322121	PAPER (EXCEPT NEWSPRINT) MILLS
32213	PAPERBOARD MILLS
322211	CORRUGATED AND SOLID FIBER BOX MANUFACTURING
322214	FIBER CAN, TUBE, DRUM, AND SIMILAR PRODUCTS MANUFACTURING
322222	COATED AND LAMINATED PAPER MANUFACTURING
322223	PLASTICS, FOIL, AND COATED PAPER BAG MANUFACTURING
322224	UNCOATED PAPER AND MULTIWALL BAG MANUFACTURING
322231	DIE-CUT PAPER AND PAPERBOARD OFFICE SUPPLIES MANUFACTURING
322291	SANITARY PAPER PRODUCT MANUFACTURING
322299	ALL OTHER CONVERTED PAPER PRODUCT MANUFACTURING
323110	COMMERCIAL LITHOGRAPHIC PRINTING
323112	COMMERCIAL FLEXOGRAPHIC PRINTING
323113	COMMERCIAL SCREEN PRINTING
323114	QUICK PRINTING
323115	DIGITAL PRINTING
323116	MANIFOLD BUSINESS FORMS PRINTING

NAICS	NAICS Description
323118	BLANKBOOK, LOOSELEAF BINDERS, AND DEVICES MANUFACTURING
323119	OTHER COMMERCIAL PRINTING
323121	TRADEBINDING AND RELATED WORK
323122	PREPRESS SERVICES
32411	PETROLEUM REFINERIES
324121	ASPHALT PAVING MIXTURE AND BLOCK MANUFACTURING
324191	PETROLEUM LUBRICATING OIL AND GREASE MANUFACTURING
32512	INDUSTRIAL GAS MANUFACTURING
325181	ALKALIES AND CHLORINE MANUFACTURING
325188	ALL OTHER BASIC INORGANIC CHEMICAL MANUFACTURING
325191	GUM AND WOOD CHEMICAL MANUFACTURING
325199	ALL OTHER BASIC ORGANIC CHEMICAL MANUFACTURING
325211	PLASTICS MATERIAL AND RESIN MANUFACTURING
325222	NONCELLULOSIC ORGANIC FIBER MANUFACTURING
325314	FERTILIZER (MIXING ONLY) MANUFACTURING
32532	PESTICIDE AND OTHER AGRICULTURAL CHEMICAL MANUFACTURING
325411	MEDICINAL AND BOTANICAL MANUFACTURING
325412	PHARMACEUTICAL PREPARATION MANUFACTURING
325414	BIOLOGICAL PRODUCT (EXCEPT DIAGNOSTIC) MANUFACTURING
32551	PAINT AND COATING MANUFACTURING
325611	SOAP AND OTHER DETERGENT MANUFACTURING
325612	POLISH AND OTHER SANITATION GOOD MANUFACTURING
32562	TOILET PREPARATION MANUFACTURING
32591	PRINTING INK MANUFACTURING
32592	EXPLOSIVES MANUFACTURING
325991	CUSTOM COMPOUNDING OF PURCHASED RESINS
325992	PHOTOGRAPHIC FILM, PAPER, PLATE, AND CHEMICAL MANUFACTURING
325998	ALL OTHER MISCELLANEOUS CHEMICAL PRODUCT AND PREPARATION MANUFACTURING
326111	UNSUPPORTED PLASTICS BAG MANUFACTURING
326112	UNSUPPORTED PLASTICS PACKAGING FILM AND SHEET MANUFACTURING
326113	UNSUPPORTED PLASTICS FILM AND SHEET (EXCEPT PACKAGING) MANUFACTURING
326121	UNSUPPORTED PLASTICS PROFILE SHAPE MANUFACTURING
326122	PLASTICS PIPE AND PIPE FITTING MANUFACTURING
32613	LAMINATED PLASTICS PLATE, SHEET, AND SHAPE MANUFACTURING
32615	URETHANE AND OTHER FOAM PRODUCT (EXCEPT POLYSTYRENE) MANUFACTURING
32616	PLASTICS BOTTLE MANUFACTURING
326191	PLASTICS PLUMBING FIXTURE MANUFACTURING
326192	RESILIENT FLOOR COVERING MANUFACTURING
326199	ALL OTHER PLASTICS PRODUCT MANUFACTURING

NAICS	NAICS Description
326212	TIRE RETREADING
32622	RUBBER AND PLASTICS HOSES AND BELTING MANUFACTURING
326299	ALL OTHER RUBBER PRODUCT MANUFACTURING
327112	VITREOUS CHINA, FINE EARTHENWARE, AND OTHER POTTERY PRODUCT MANUFACTURING
327122	CERAMIC WALL AND FLOOR TILE MANUFACTURING
327123	OTHER STRUCTURAL CLAY PRODUCT MANUFACTURING
327124	CLAY REFRACTORY MANUFACTURING
327211	FLAT GLASS MANUFACTURING
327212	OTHER PRESSED AND BLOWN GLASS AND GLASSWARE MANUFACTURING
327213	GLASS CONTAINER MANUFACTURING
327215	GLASS PRODUCT MANUFACTURING MADE OF PURCHASED GLASS
32731	CEMENT MANUFACTURING
327331	CONCRETE BLOCK AND BRICK MANUFACTURING
327332	CONCRETE PIPE MANUFACTURING
32739	OTHER CONCRETE PRODUCT MANUFACTURING
32742	GYP SUM PRODUCT MANUFACTURING
32791	ABRASIVE PRODUCT MANUFACTURING
327991	CUT STONE AND STONE PRODUCT MANUFACTURING
327993	MINERAL WOOL MANUFACTURING
327999	ALL OTHER MISCELLANEOUS NONMETALLIC MINERAL PRODUCT MANUFACTURING
331111	IRON AND STEEL MILLS
33121	IRON AND STEEL PIPE AND TUBE MANUFACTURING FROM PURCHASED STEEL
331221	ROLLED STEEL SHAPE MANUFACTURING
331222	STEEL WIRE DRAWING
331312	PRIMARY ALUMINUM PRODUCTION
331316	ALUMINUM EXTRUDED PRODUCT MANUFACTURING
331419	PRIMARY SMELTING AND REFINING OF NONFERROUS METAL (EXCEPT COPPER AND ALUMINUM)
331421	COPPER ROLLING, DRAWING, AND EXTRUDING
331491	NONFERROUS METAL (EXCEPT COPPER AND ALUMINUM) ROLLING, DRAWING, AND EXTRUDING
331492	SECONDARY SMELTING, REFINING, AND ALLOYING OF NONFERROUS METAL (EXCEPT COPPER AND ALUMINUM)
331512	STEEL INVESTMENT FOUNDRIES
331513	STEEL FOUNDRIES (EXCEPT INVESTMENT)
331525	COPPER FOUNDRIES (EXCEPT DIE-CASTING)
331528	OTHER NONFERROUS FOUNDRIES (EXCEPT DIE-CASTING)
332111	IRON AND STEEL FORGING
332115	CROWN AND CLOSURE MANUFACTURING
332116	METAL STAMPING
332211	CUTLERY AND FLATWARE (EXCEPT PRECIOUS) MANUFACTURING
332212	HAND AND EDGE TOOL MANUFACTURING
332213	SAW BLADE AND HANDSAW MANUFACTURING

NAICS	NAICS Description
332311	PREFABRICATED METAL BUILDING AND COMPONENT MANUFACTURING
332312	FABRICATED STRUCTURAL METAL MANUFACTURING
332313	PLATE WORK MANUFACTURING
332321	METAL WINDOW AND DOOR MANUFACTURING
332322	SHEET METAL WORK MANUFACTURING
332323	ORNAMENTAL AND ARCHITECTURAL METAL WORK MANUFACTURING
33241	POWER BOILER AND HEAT EXCHANGER MANUFACTURING
33242	METAL TANK (HEAVY GAUGE) MANUFACTURING
332431	METAL CAN MANUFACTURING
332439	OTHER METAL CONTAINER MANUFACTURING
33251	HARDWARE MANUFACTURING
332612	SPRING (LIGHT GAUGE) MANUFACTURING
332618	OTHER FABRICATED WIRE PRODUCT MANUFACTURING
33271	MACHINE SHOPS
332722	BOLT, NUT, SCREW, RIVET, AND WASHER MANUFACTURING
332811	METAL HEAT TREATING
332812	METAL COATING, ENGRAVING (EXCEPT JEWELRY AND SILVERWARE), AND ALLIED SERVICES TO MANUFACTURERS
332813	ELECTROPLATING, PLATING, POLISHING, ANODIZING, AND COLORING
332911	INDUSTRIAL VALVE MANUFACTURING
332912	FLUID POWER VALVE AND HOSE FITTING MANUFACTURING
332913	PLUMBING FIXTURE FITTING AND TRIM MANUFACTURING
332919	OTHER METAL VALVE AND PIPE FITTING MANUFACTURING
332991	BALL AND ROLLER BEARING MANUFACTURING
332994	SMALL ARMS MANUFACTURING
332995	OTHER ORDNANCE AND ACCESSORIES MANUFACTURING
332996	FABRICATED PIPE AND PIPE FITTING MANUFACTURING
332998	ENAMELED IRON AND METAL SANITARY WARE MANUFACTURING
332999	ALL OTHER MISCELLANEOUS FABRICATED METAL PRODUCT MANUFACTURING
333111	FARM MACHINERY AND EQUIPMENT MANUFACTURING
333112	LAWN AND GARDEN TRACTOR AND HOME LAWN AND GARDEN EQUIPMENT MANUFACTURING
33312	CONSTRUCTION MACHINERY MANUFACTURING
333131	MINING MACHINERY AND EQUIPMENT MANUFACTURING
333132	OIL AND GAS FIELD MACHINERY AND EQUIPMENT MANUFACTURING
33321	SAWMILL AND WOODWORKING MACHINERY MANUFACTURING
33322	PLASTICS AND RUBBER INDUSTRY MACHINERY MANUFACTURING
333291	PAPER INDUSTRY MACHINERY MANUFACTURING
333292	TEXTILE MACHINERY MANUFACTURING
333293	PRINTING MACHINERY AND EQUIPMENT MANUFACTURING
333294	FOOD PRODUCT MACHINERY MANUFACTURING

NAICS	NAICS Description
333298	ALL OTHER INDUSTRIAL MACHINERY MANUFACTURING
333311	AUTOMATIC VENDING MACHINE MANUFACTURING
333312	COMMERCIAL LAUNDRY, DRYCLEANING, AND PRESSING MACHINE MANUFACTURING
333313	OFFICE MACHINERY MANUFACTURING
333314	OPTICAL INSTRUMENT AND LENS MANUFACTURING
333315	PHOTOGRAPHIC AND PHOTOCOPYING EQUIPMENT MANUFACTURING
333319	OTHER COMMERCIAL AND SERVICE INDUSTRY MACHINERY MANUFACTURING
333411	AIR PURIFICATION EQUIPMENT MANUFACTURING
333412	INDUSTRIAL AND COMMERCIAL FAN AND BLOWER MANUFACTURING
333414	HEATING EQUIPMENT (EXCEPT WARM AIR FURNACES) MANUFACTURING
333415	AIR-CONDITIONING AND WARM AIR HEATING EQUIPMENT AND COMMERCIAL AND INDUSTRIAL REFRIGERATION EQUIPMENT MANUFACTURING
333511	INDUSTRIAL MOLD MANUFACTURING
333512	MACHINE TOOL (METAL CUTTING TYPES) MANUFACTURING
333513	MACHINE TOOL (METAL FORMING TYPES) MANUFACTURING
333514	SPECIAL DIE AND TOOL, DIE SET, JIG, AND FIXTURE MANUFACTURING
333515	CUTTING TOOL AND MACHINE TOOL ACCESSORY MANUFACTURING
333518	OTHER METALWORKING MACHINERY MANUFACTURING
333611	TURBINE AND TURBINE GENERATOR SET UNITS MANUFACTURING
333612	SPEED CHANGER, INDUSTRIAL HIGH-SPEED DRIVE, AND GEAR MANUFACTURING
333613	MECHANICAL POWER TRANSMISSION EQUIPMENT MANUFACTURING
333618	OTHER ENGINE EQUIPMENT MANUFACTURING
333911	PUMP AND PUMPING EQUIPMENT MANUFACTURING
333912	AIR AND GAS COMPRESSOR MANUFACTURING
333913	MEASURING AND DISPENSING PUMP MANUFACTURING
333921	ELEVATOR AND MOVING STAIRWAY MANUFACTURING
333922	CONVEYOR AND CONVEYING EQUIPMENT MANUFACTURING
333923	OVERHEAD TRAVELING CRANE, HOIST, AND MONORAIL SYSTEM MANUFACTURING
333924	INDUSTRIAL TRUCK, TRACTOR, TRAILER, AND STACKER MACHINERY MANUFACTURING
333991	POWER-DRIVEN HANDTOOL MANUFACTURING
333992	WELDING AND SOLDERING EQUIPMENT MANUFACTURING
333993	PACKAGING MACHINERY MANUFACTURING
333994	INDUSTRIAL PROCESS FURNACE AND OVEN MANUFACTURING
333996	FLUID POWER PUMP AND MOTOR MANUFACTURING
333997	SCALE AND BALANCE (EXCEPT LABORATORY) MANUFACTURING

NAICS	NAICS Description
333999	ALL OTHER MISCELLANEOUS GENERAL PURPOSE MACHINERY MANUFACTURING
334111	ELECTRONIC COMPUTER MANUFACTURING
334112	COMPUTER STORAGE DEVICE MANUFACTURING
334119	OTHER COMPUTER PERIPHERAL EQUIPMENT MANUFACTURING
33421	TELEPHONE APPARATUS MANUFACTURING
33422	RADIO AND TELEVISION BROADCASTING AND WIRELESS COMMUNICATIONS EQUIPMENT MANUFACTURING
33429	OTHER COMMUNICATIONS EQUIPMENT MANUFACTURING
33431	AUDIO AND VIDEO EQUIPMENT MANUFACTURING
334412	BARE PRINTED CIRCUIT BOARD MANUFACTURING
334413	SEMICONDUCTOR AND RELATED DEVICE MANUFACTURING
334418	PRINTED CIRCUIT ASSEMBLY (ELECTRONIC ASSEMBLY) MANUFACTURING
334419	OTHER ELECTRONIC COMPONENT MANUFACTURING
334510	ELECTROMEDICAL AND ELECTROTHERAPEUTIC APPARATUS MANUFACTURING
334511	SEARCH, DETECTION, NAVIGATION, GUIDANCE, AERONAUTICAL, AND NAUTICAL SYSTEM AND INSTRUMENT MANUFACTURING
334512	AUTOMATIC ENVIRONMENTAL CONTROL MANUFACTURING FOR RESIDENTIAL, COMMERCIAL, AND APPLIANCE USE
334513	INSTRUMENTS AND RELATED PRODUCTS MANUFACTURING FOR MEASURING, DISPLAYING, AND CONTROLLING INDUSTRIAL PROCESS VARIABLES
334514	TOTALIZING FLUID METER AND COUNTING DEVICE MANUFACTURING
334515	INSTRUMENT MANUFACTURING FOR MEASURING AND TESTING ELECTRICITY AND ELECTRICAL SIGNALS
334516	ANALYTICAL LABORATORY INSTRUMENT MANUFACTURING
334517	IRRADIATION APPARATUS MANUFACTURING
334518	WATCH, CLOCK, AND PART MANUFACTURING
334519	OTHER MEASURING AND CONTROLLING DEVICE MANUFACTURING
334612	PRERECORDED COMPACT DISC (EXCEPT SOFTWARE), TAPE, AND RECORD REPRODUCING
334613	MAGNETIC AND OPTICAL RECORDING MEDIA MANUFACTURING
33511	ELECTRIC LAMP BULB AND PART MANUFACTURING
335121	RESIDENTIAL ELECTRIC LIGHTING FIXTURE MANUFACTURING
335129	OTHER LIGHTING EQUIPMENT MANUFACTURING
335211	ELECTRIC HOUSEWARES AND HOUSEHOLD FAN MANUFACTURING
335212	HOUSEHOLD VACUUM CLEANER MANUFACTURING
335221	HOUSEHOLD COOKING APPLIANCE MANUFACTURING
335224	HOUSEHOLD LAUNDRY EQUIPMENT MANUFACTURING
335228	OTHER MAJOR HOUSEHOLD APPLIANCE MANUFACTURING
335311	POWER, DISTRIBUTION, AND SPECIALTY TRANSFORMER MANUFACTURING



NAICS	NAICS Description
335312	MOTOR AND GENERATOR MANUFACTURING
335314	RELAY AND INDUSTRIAL CONTROL MANUFACTURING
335911	STORAGE BATTERY MANUFACTURING
335912	PRIMARY BATTERY MANUFACTURING
335921	FIBER OPTIC CABLE MANUFACTURING
335929	OTHER COMMUNICATION AND ENERGY WIRE MANUFACTURING
335931	CURRENT-CARRYING WIRING DEVICE MANUFACTURING
335932	NONCURRENT-CARRYING WIRING DEVICE MANUFACTURING
335999	ALL OTHER MISCELLANEOUS ELECTRICAL EQUIPMENT AND COMPONENT MANUFACTURING
336211	MOTOR VEHICLE BODY MANUFACTURING
336212	TRUCK TRAILER MANUFACTURING
336214	TRAVEL TRAILER AND CAMPER MANUFACTURING
336312	GASOLINE ENGINE AND ENGINE PARTS MANUFACTURING
336322	OTHER MOTOR VEHICLE ELECTRICAL AND ELECTRONIC EQUIPMENT MANUFACTURING
33633	MOTOR VEHICLE STEERING AND SUSPENSION COMPONENTS (EXCEPT SPRING) MANUFACTURING
33634	MOTOR VEHICLE BRAKE SYSTEM MANUFACTURING
33635	MOTOR VEHICLE TRANSMISSION AND POWER TRAIN PARTS MANUFACTURING
33636	MOTOR VEHICLE SEATING AND INTERIOR TRIM MANUFACTURING
336391	MOTOR VEHICLE AIR-CONDITIONING MANUFACTURING
336399	ALL OTHER MOTOR VEHICLE PARTS MANUFACTURING
336411	AIRCRAFT MANUFACTURING
336412	AIRCRAFT ENGINE AND ENGINE PARTS MANUFACTURING
33651	RAILROAD ROLLING STOCK MANUFACTURING
336611	SHIP BUILDING AND REPAIRING
336612	BOAT BUILDING
336991	MOTORCYCLE, BICYCLE, AND PARTS MANUFACTURING
336999	ALL OTHER TRANSPORTATION EQUIPMENT MANUFACTURING
33711	WOOD KITCHEN CABINET AND COUNTERTOP MANUFACTURING
337122	NONUPHOLSTERED WOOD HOUSEHOLD FURNITURE MANUFACTURING
337124	METAL HOUSEHOLD FURNITURE MANUFACTURING
337125	HOUSEHOLD FURNITURE (EXCEPT WOOD AND METAL) MANUFACTURING
337127	INSTITUTIONAL FURNITURE MANUFACTURING
337211	WOOD OFFICE FURNITURE MANUFACTURING
337214	OFFICE FURNITURE (EXCEPT WOOD) MANUFACTURING
337215	SHOWCASE, PARTITION, SHELVING, AND LOCKER MANUFACTURING
33791	MATTRESS MANUFACTURING
33792	BLIND AND SHADE MANUFACTURING
339112	SURGICAL AND MEDICAL INSTRUMENT MANUFACTURING
339113	SURGICAL APPLIANCE AND SUPPLIES MANUFACTURING
339114	DENTAL EQUIPMENT AND SUPPLIES MANUFACTURING
339115	OPHTHALMIC GOODS MANUFACTURING

NAICS	NAICS Description
339116	DENTAL LABORATORIES
339911	JEWELRY (EXCEPT COSTUME) MANUFACTURING
339912	SILVERWARE AND HOLLOWWARE MANUFACTURING
339913	JEWELERS' MATERIAL AND LAPIDARY WORK MANUFACTURING
339914	COSTUME JEWELRY AND NOVELTY MANUFACTURING
33992	SPORTING AND ATHLETIC GOODS MANUFACTURING
339931	DOLL AND STUFFED TOY MANUFACTURING
339932	GAME, TOY, AND CHILDREN'S VEHICLE MANUFACTURING
339942	LEAD PENCIL AND ART GOOD MANUFACTURING
339943	MARKING DEVICE MANUFACTURING
339944	CARBON PAPER AND INKED RIBBON MANUFACTURING
33995	SIGN MANUFACTURING
339991	GASKET, PACKING, AND SEALING DEVICE MANUFACTURING
339992	MUSICAL INSTRUMENT MANUFACTURING
339993	FASTENER, BUTTON, NEEDLE, AND PIN MANUFACTURING
339994	BROOM, BRUSH, AND MOP MANUFACTURING
339995	BURIAL CASKET MANUFACTURING
339999	ALL OTHER MISCELLANEOUS MANUFACTURING
42111	AUTOMOBILE AND OTHER MOTOR VEHICLE WHOLESALERS
42112	MOTOR VEHICLE SUPPLIES AND NEW PARTS WHOLESALERS
42113	TIRE AND TUBE WHOLESALERS
42114	MOTOR VEHICLE PARTS (USED) WHOLESALERS
42121	FURNITURE WHOLESALERS
42122	HOME FURNISHING WHOLESALERS
42131	LUMBER, PLYWOOD, MILLWORK, AND WOOD PANEL WHOLESALERS
42132	BRICK, STONE, AND RELATED CONSTRUCTION MATERIAL WHOLESALERS
42133	ROOFING, SIDING, AND INSULATION MATERIAL WHOLESALERS
42139	OTHER CONSTRUCTION MATERIAL WHOLESALERS
42141	PHOTOGRAPHIC EQUIPMENT AND SUPPLIES WHOLESALERS
42142	OFFICE EQUIPMENT WHOLESALERS
42143	COMPUTER AND COMPUTER PERIPHERAL EQUIPMENT AND SOFTWARE WHOLESALERS
42144	OTHER COMMERCIAL EQUIPMENT WHOLESALERS
42145	MEDICAL, DENTAL, AND HOSPITAL EQUIPMENT AND SUPPLIES WHOLESALERS
42146	OPHTHALMIC GOODS WHOLESALERS
42149	OTHER PROFESSIONAL EQUIPMENT AND SUPPLIES WHOLESALERS
42151	METAL SERVICE CENTERS AND OFFICES
42152	COAL AND OTHER MINERAL AND ORE WHOLESALERS
42161	ELECTRICAL APPARATUS AND EQUIPMENT, WIRING SUPPLIES, AND CONSTRUCTION MATERIAL WHOLESALERS
42162	ELECTRICAL APPLIANCE, TELEVISION, AND RADIO SET WHOLESALERS
42169	OTHER ELECTRONIC PARTS AND EQUIPMENT WHOLESALERS
42171	HARDWARE WHOLESALERS

NAICS	NAICS Description
42172	PLUMBING AND HEATING EQUIPMENT AND SUPPLIES (HYDRONICS) WHOLESALERS
42173	WARM AIR HEATING AND AIR-CONDITIONING EQUIPMENT AND SUPPLIES WHOLESALERS
42174	REFRIGERATION EQUIPMENT AND SUPPLIES WHOLESALERS
42181	CONSTRUCTION AND MINING (EXCEPT OIL WELL) MACHINERY AND EQUIPMENT WHOLESALERS
42182	FARM AND GARDEN MACHINERY AND EQUIPMENT WHOLESALERS
42183	INDUSTRIAL MACHINERY AND EQUIPMENT WHOLESALERS
42184	INDUSTRIAL SUPPLIES WHOLESALERS
42185	SERVICE ESTABLISHMENT EQUIPMENT AND SUPPLIES WHOLESALERS
42186	TRANSPORTATION EQUIPMENT AND SUPPLIES (EXCEPT MOTOR VEHICLE) WHOLESALERS
42191	SPORTING AND RECREATIONAL GOODS AND SUPPLIES WHOLESALERS
42192	TOY AND HOBBY GOODS AND SUPPLIES WHOLESALERS
42193	RECYCLABLE MATERIAL WHOLESALERS
42194	JEWELRY, WATCH, PRECIOUS STONE, AND PRECIOUS METAL WHOLESALERS
42199	OTHER MISCELLANEOUS DURABLE GOODS WHOLESALERS
42211	PRINTING AND WRITING PAPER WHOLESALERS
42212	STATIONERY AND OFFICE SUPPLIES WHOLESALERS
42213	INDUSTRIAL AND PERSONAL SERVICE PAPER WHOLESALERS
42221	DRUGS AND DRUGGISTS' SUNDRIES WHOLESALERS
42231	PIECE GOODS, NOTIONS, AND OTHER DRY GOODS WHOLESALERS
42232	MEN'S AND BOYS' CLOTHING AND FURNISHINGS WHOLESALERS
42233	WOMEN'S, CHILDREN'S, AND INFANTS' CLOTHING AND ACCESSORIES WHOLESALERS
42234	FOOTWEAR WHOLESALERS
42241	GENERAL LINE GROCERY WHOLESALERS
42242	PACKAGED FROZEN FOOD WHOLESALERS
42243	DAIRY PRODUCT (EXCEPT DRIED OR CANNED) WHOLESALERS
42244	POULTRY AND POULTRY PRODUCT WHOLESALERS
42245	CONFECTIONERY WHOLESALERS
42246	FISH AND SEAFOOD WHOLESALERS
42247	MEAT AND MEAT PRODUCT WHOLESALERS
42248	FRESH FRUIT AND VEGETABLE WHOLESALERS
42249	OTHER GROCERY AND RELATED PRODUCTS WHOLESALERS
42251	GRAIN AND FIELD BEAN WHOLESALERS
42252	LIVESTOCK WHOLESALERS
42259	OTHER FARM PRODUCT RAW MATERIAL WHOLESALERS
42261	PLASTICS MATERIALS AND BASIC FORMS AND SHAPES WHOLESALERS
42269	OTHER CHEMICAL AND ALLIED PRODUCTS WHOLESALERS

NAICS	NAICS Description
42271	PETROLEUM BULK STATIONS AND TERMINALS
42272	PETROLEUM AND PETROLEUM PRODUCTS WHOLESALERS (EXCEPT BULK STATIONS AND TERMINALS)
42281	BEER AND ALE WHOLESALERS
42282	WINE AND DISTILLED ALCOHOLIC BEVERAGE WHOLESALERS
42291	FARM SUPPLIES WHOLESALERS
42292	BOOK, PERIODICAL, AND NEWSPAPER WHOLESALERS
42293	FLOWER, NURSERY STOCK, AND FLORISTS' SUPPLIES WHOLESALERS
42294	TOBACCO AND TOBACCO PRODUCT WHOLESALERS
42295	PAINT, VARNISH, AND SUPPLIES WHOLESALERS
42299	OTHER MISCELLANEOUS NONDURABLE GOODS WHOLESALERS
44111	NEW CAR DEALERS
44112	USED CAR DEALERS
44121	RECREATIONAL VEHICLE DEALERS
441221	MOTORCYCLE DEALERS
441222	BOAT DEALERS
441229	ALL OTHER MOTOR VEHICLE DEALERS
44131	AUTOMOTIVE PARTS AND ACCESSORIES STORES
44132	TIRE DEALERS
44211	FURNITURE STORES
44221	FLOOR COVERING STORES
442291	WINDOW TREATMENT STORES
442299	ALL OTHER HOME FURNISHINGS STORES
443111	HOUSEHOLD APPLIANCE STORES
443112	RADIO, TELEVISION, AND OTHER ELECTRONICS STORES
44312	COMPUTER AND SOFTWARE STORES
44313	CAMERA AND PHOTOGRAPHIC SUPPLIES STORES
44411	HOME CENTERS
44412	PAINT AND WALLPAPER STORES
44413	HARDWARE STORES
44419	OTHER BUILDING MATERIAL DEALERS
44421	OUTDOOR POWER EQUIPMENT STORES
44422	NURSERY AND GARDEN CENTERS
44511	SUPERMARKETS AND OTHER GROCERY (EXCEPT CONVENIENCE) STORES
44512	CONVENIENCE STORES
44521	MEAT MARKETS
44522	FISH AND SEAFOOD MARKETS
44523	FRUIT AND VEGETABLE MARKETS
445291	BAKED GOODS STORES
445292	CONFECTIONERY AND NUT STORES
445299	ALL OTHER SPECIALTY FOOD STORES
44531	BEER, WINE, AND LIQUOR STORES
44611	PHARMACIES AND DRUG STORES
44612	COSMETICS, BEAUTY SUPPLIES, AND PERFUME STORES
44613	OPTICAL GOODS STORES

NAICS	NAICS Description
446191	FOOD (HEALTH) SUPPLEMENT STORES
446199	ALL OTHER HEALTH AND PERSONAL CARE STORES
44719	OTHER GASOLINE STATIONS
44811	MEN'S CLOTHING STORES
44812	WOMEN'S CLOTHING STORES
44813	CHILDREN'S AND INFANTS' CLOTHING STORES
44814	FAMILY CLOTHING STORES
44815	CLOTHING ACCESSORIES STORES
44819	OTHER CLOTHING STORES
44821	SHOE STORES
44831	JEWELRY STORES
44832	LUGGAGE AND LEATHER GOODS STORES
45111	SPORTING GOODS STORES
45112	HOBBY, TOY, AND GAME STORES
45113	SEWING, NEEDLEWORK, AND PIECE GOODS STORES
45114	MUSICAL INSTRUMENT AND SUPPLIES STORES
451211	BOOK STORES
451212	NEWS DEALERS AND NEWSSTANDS
45122	PRERECORDED TAPE, COMPACT DISC, AND RECORD STORES
45211	DEPARTMENT STORES
45299	ALL OTHER GENERAL MERCHANDISE STORES
45311	FLORISTS
45321	OFFICE SUPPLIES AND STATIONERY STORES
45322	GIFT, NOVELTY, AND SOUVENIR STORES
45331	USED MERCHANDISE STORES
45391	PET AND PET SUPPLIES STORES
45392	ART DEALERS
45393	MANUFACTURED (MOBILE) HOME DEALERS
453991	TOBACCO STORES
453998	ALL OTHER MISCELLANEOUS STORE RETAILERS (EXCEPT TOBACCO STORES)
45411	ELECTRONIC SHOPPING AND MAIL-ORDER HOUSES
45421	VENDING MACHINE OPERATORS
454312	LIQUEFIED PETROLEUM GAS (BOTTLED GAS) DEALERS
454319	OTHER FUEL DEALERS
45439	OTHER DIRECT SELLING ESTABLISHMENTS
481111	SCHEDULED PASSENGER AIR TRANSPORTATION
481112	SCHEDULED FREIGHT AIR TRANSPORTATION
481211	NONSCHEDULED CHARTERED PASSENGER AIR TRANSPORTATION
481212	NONSCHEDULED CHARTERED FREIGHT AIR TRANSPORTATION
482111	LINE-HAUL RAILROADS
483111	DEEP SEA FREIGHT TRANSPORTATION
483114	COASTAL AND GREAT LAKES PASSENGER TRANSPORTATION
483211	INLAND WATER FREIGHT TRANSPORTATION
483212	INLAND WATER PASSENGER TRANSPORTATION
48411	GENERAL FREIGHT TRUCKING, LOCAL

NAICS	NAICS Description
484121	GENERAL FREIGHT TRUCKING, LONG-DISTANCE, TRUCKLOAD
48421	USED HOUSEHOLD AND OFFICE GOODS MOVING
48422	SPECIALIZED FREIGHT (EXCEPT USED GOODS) TRUCKING, LOCAL
48423	SPECIALIZED FREIGHT (EXCEPT USED GOODS) TRUCKING, LONG-DISTANCE
485111	MIXED MODE TRANSIT SYSTEMS
485113	BUS AND OTHER MOTOR VEHICLE TRANSIT SYSTEMS
48531	TAXI SERVICE
48532	LIMOUSINE SERVICE
48541	SCHOOL AND EMPLOYEE BUS TRANSPORTATION
485991	SPECIAL NEEDS TRANSPORTATION
485999	ALL OTHER TRANSIT AND GROUND PASSENGER TRANSPORTATION
48611	PIPELINE TRANSPORTATION OF CRUDE OIL
48699	ALL OTHER PIPELINE TRANSPORTATION
48711	SCENIC AND SIGHTSEEING TRANSPORTATION, LAND
48721	SCENIC AND SIGHTSEEING TRANSPORTATION, WATER
48799	SCENIC AND SIGHTSEEING TRANSPORTATION, OTHER
488119	OTHER AIRPORT OPERATIONS
48819	OTHER SUPPORT ACTIVITIES FOR AIR TRANSPORTATION
48831	PORT AND HARBOR OPERATIONS
48832	MARINE CARGO HANDLING
48833	NAVIGATIONAL SERVICES TO SHIPPING
48839	OTHER SUPPORT ACTIVITIES FOR WATER TRANSPORTATION
48841	MOTOR VEHICLE TOWING
48849	OTHER SUPPORT ACTIVITIES FOR ROAD TRANSPORTATION
48851	FREIGHT TRANSPORTATION ARRANGEMENT
488991	PACKING AND CRATING
488999	ALL OTHER SUPPORT ACTIVITIES FOR TRANSPORTATION
49111	POSTAL SERVICE
49211	COURIERS
49221	LOCAL MESSENGERS AND LOCAL DELIVERY
49311	GENERAL WAREHOUSING AND STORAGE
49312	REFRIGERATED WAREHOUSING AND STORAGE
49313	FARM PRODUCT WAREHOUSING AND STORAGE
49319	OTHER WAREHOUSING AND STORAGE
51111	NEWSPAPER PUBLISHERS
51112	PERIODICAL PUBLISHERS
51113	BOOK PUBLISHERS
51114	DATABASE AND DIRECTORY PUBLISHERS
511199	ALL OTHER PUBLISHERS
51121	SOFTWARE PUBLISHERS
51211	MOTION PICTURE AND VIDEO PRODUCTION
51212	MOTION PICTURE AND VIDEO DISTRIBUTION
512131	MOTION PICTURE THEATERS (EXCEPT DRIVE-INS)
512191	TELEPRODUCTION AND OTHER POSTPRODUCTION SERVICES

NAICS	NAICS Description
512199	OTHER MOTION PICTURE AND VIDEO INDUSTRIES
51223	MUSIC PUBLISHERS
51224	SOUND RECORDING STUDIOS
513112	RADIO STATIONS
51312	TELEVISION BROADCASTING
51331	WIRED TELECOMMUNICATIONS CARRIERS
513321	PAGING
513322	CELLULAR AND OTHER WIRELESS TELECOMMUNICATIONS
51333	TELECOMMUNICATIONS RESELLERS
51334	SATELLITE TELECOMMUNICATIONS
51411	NEWS SYNDICATES
51412	LIBRARIES AND ARCHIVES
514191	ON-LINE INFORMATION SERVICES
514199	ALL OTHER INFORMATION SERVICES
51421	DATA PROCESSING SERVICES
52211	COMMERCIAL BANKING
52212	SAVINGS INSTITUTIONS
52213	CREDIT UNIONS
52221	CREDIT CARD ISSUING
52222	SALES FINANCING
522291	CONSUMER LENDING
522292	REAL ESTATE CREDIT
522293	INTERNATIONAL TRADE FINANCING
522298	ALL OTHER NONDEPOSITORY CREDIT INTERMEDIATION
52231	MORTGAGE AND NONMORTGAGE LOAN BROKERS
52232	FINANCIAL TRANSACTIONS PROCESSING, RESERVE, AND CLEARINGHOUSE ACTIVITIES
52239	OTHER ACTIVITIES RELATED TO CREDIT INTERMEDIATION
52311	INVESTMENT BANKING AND SECURITIES DEALING
52312	SECURITIES BROKERAGE
52314	COMMODITY CONTRACTS BROKERAGE
52321	SECURITIES AND COMMODITY EXCHANGES
52391	MISCELLANEOUS INTERMEDIATION
52393	INVESTMENT ADVICE
523991	TRUST, FIDUCIARY, AND CUSTODY ACTIVITIES
523999	MISCELLANEOUS FINANCIAL INVESTMENT ACTIVITIES
524113	DIRECT LIFE INSURANCE CARRIERS
524114	DIRECT HEALTH AND MEDICAL INSURANCE CARRIERS
524126	DIRECT PROPERTY AND CASUALTY INSURANCE CARRIERS
524127	DIRECT TITLE INSURANCE CARRIERS
524128	OTHER DIRECT INSURANCE (EXCEPT LIFE, HEALTH, AND MEDICAL) CARRIERS
52421	INSURANCE AGENCIES AND BROKERAGES
524291	CLAIMS ADJUSTING
524298	ALL OTHER INSURANCE RELATED ACTIVITIES
52511	PENSION FUNDS
52599	OTHER FINANCIAL VEHICLES

NAICS	NAICS Description
53111	LESSORS OF RESIDENTIAL BUILDINGS AND DWELLINGS
53112	LESSORS OF NONRESIDENTIAL BUILDINGS (EXCEPT MINIWAREHOUSES)
53113	LESSORS OF MINIWAREHOUSES AND SELF-STORAGE UNITS
53119	LESSORS OF OTHER REAL ESTATE PROPERTY
53121	OFFICES OF REAL ESTATE AGENTS AND BROKERS
531311	RESIDENTIAL PROPERTY MANAGERS
531312	NONRESIDENTIAL PROPERTY MANAGERS
53132	OFFICES OF REAL ESTATE APPRAISERS
53139	OTHER ACTIVITIES RELATED TO REAL ESTATE
532111	PASSENGER CAR RENTAL
532112	PASSENGER CAR LEASING
53212	TRUCK, UTILITY TRAILER, AND RV (RECREATIONAL VEHICLE) RENTAL AND LEASING
53221	CONSUMER ELECTRONICS AND APPLIANCES RENTAL
53222	FORMAL WEAR AND COSTUME RENTAL
53223	VIDEO TAPE AND DISC RENTAL
532291	HOME HEALTH EQUIPMENT RENTAL
532292	RECREATIONAL GOODS RENTAL
532299	ALL OTHER CONSUMER GOODS RENTAL
53231	GENERAL RENTAL CENTERS
532411	COMMERCIAL AIR, RAIL, AND WATER TRANSPORTATION EQUIPMENT RENTAL AND LEASING
532412	CONSTRUCTION, MINING, AND FORESTRY MACHINERY AND EQUIPMENT RENTAL AND LEASING
53242	OFFICE MACHINERY AND EQUIPMENT RENTAL AND LEASING
53249	OTHER COMMERCIAL AND INDUSTRIAL MACHINERY AND EQUIPMENT RENTAL AND LEASING
53311	LESSORS OF NONFINANCIAL INTANGIBLE ASSETS (EXCEPT COPYRIGHTED WORKS)
54111	OFFICES OF LAWYERS
541191	TITLE ABSTRACT AND SETTLEMENT OFFICES
541199	ALL OTHER LEGAL SERVICES
541211	OFFICES OF CERTIFIED PUBLIC ACCOUNTANTS
541213	TAX PREPARATION SERVICES
541214	PAYROLL SERVICES
541219	OTHER ACCOUNTING SERVICES
54131	ARCHITECTURAL SERVICES
54132	LANDSCAPE ARCHITECTURAL SERVICES
54133	ENGINEERING SERVICES
54134	DRAFTING SERVICES
54135	BUILDING INSPECTION SERVICES
54136	GEOPHYSICAL SURVEYING AND MAPPING SERVICES
54137	SURVEYING AND MAPPING (EXCEPT GEOPHYSICAL) SERVICES
54138	TESTING LABORATORIES
54141	INTERIOR DESIGN SERVICES
54142	INDUSTRIAL DESIGN SERVICES
54143	GRAPHIC DESIGN SERVICES



NAICS	NAICS Description
54149	OTHER SPECIALIZED DESIGN SERVICES
541511	CUSTOM COMPUTER PROGRAMMING SERVICES
541512	COMPUTER SYSTEMS DESIGN SERVICES
541513	COMPUTER FACILITIES MANAGEMENT SERVICES
541519	OTHER COMPUTER RELATED SERVICES
541611	ADMINISTRATIVE MANAGEMENT AND GENERAL MANAGEMENT CONSULTING SERVICES
541612	HUMAN RESOURCES AND EXECUTIVE SEARCH CONSULTING SERVICES
541613	MARKETING CONSULTING SERVICES
541614	PROCESS, PHYSICAL DISTRIBUTION, AND LOGISTICS CONSULTING SERVICES
541618	OTHER MANAGEMENT CONSULTING SERVICES
54162	ENVIRONMENTAL CONSULTING SERVICES
54169	OTHER SCIENTIFIC AND TECHNICAL CONSULTING SERVICES
54171	RESEARCH AND DEVELOPMENT IN THE PHYSICAL, ENGINEERING, AND LIFE SCIENCES
54172	RESEARCH AND DEVELOPMENT IN THE SOCIAL SCIENCES AND HUMANITIES
54181	ADVERTISING AGENCIES
54182	PUBLIC RELATIONS AGENCIES
54184	MEDIA REPRESENTATIVES
54185	DISPLAY ADVERTISING
54186	DIRECT MAIL ADVERTISING
54187	ADVERTISING MATERIAL DISTRIBUTION SERVICES
54189	OTHER SERVICES RELATED TO ADVERTISING
54191	MARKETING RESEARCH AND PUBLIC OPINION POLLING
541921	PHOTOGRAPHY STUDIOS, PORTRAIT
541922	COMMERCIAL PHOTOGRAPHY
54193	TRANSLATION AND INTERPRETATION SERVICES
54194	VETERINARY SERVICES
54199	ALL OTHER PROFESSIONAL, SCIENTIFIC, AND TECHNICAL SERVICES
551112	OFFICES OF OTHER HOLDING COMPANIES
56111	OFFICE ADMINISTRATIVE SERVICES
56121	FACILITIES SUPPORT SERVICES
56131	EMPLOYMENT PLACEMENT AGENCIES
56132	TEMPORARY HELP SERVICES
56141	DOCUMENT PREPARATION SERVICES
561421	TELEPHONE ANSWERING SERVICES
561422	TELEMARKETING BUREAUS
561431	PRIVATE MAIL CENTERS
561439	OTHER BUSINESS SERVICE CENTERS (INCLUDING COPY SHOPS)
56144	COLLECTION AGENCIES
56145	CREDIT BUREAUS
561492	COURT REPORTING AND STENOGRAPHY SERVICES
561499	ALL OTHER BUSINESS SUPPORT SERVICES
56151	TRAVEL AGENCIES

NAICS	NAICS Description
56152	TOUR OPERATORS
561599	ALL OTHER TRAVEL ARRANGEMENT AND RESERVATION SERVICES
561611	INVESTIGATION SERVICES
561612	SECURITY GUARDS AND PATROL SERVICES
561613	ARMORED CAR SERVICES
561621	SECURITY SYSTEMS SERVICES (EXCEPT LOCKSMITHS)
561622	LOCKSMITHS
56171	EXTERMINATING AND PEST CONTROL SERVICES
56172	JANITORIAL SERVICES
56173	LANDSCAPING SERVICES
56174	CARPET AND UPHOLSTERY CLEANING SERVICES
56179	OTHER SERVICES TO BUILDINGS AND DWELLINGS
56191	PACKAGING AND LABELING SERVICES
56192	CONVENTION AND TRADE SHOW ORGANIZERS
56199	ALL OTHER SUPPORT SERVICES
562111	SOLID WASTE COLLECTION
562119	OTHER WASTE COLLECTION
562211	HAZARDOUS WASTE TREATMENT AND DISPOSAL
562212	SOLID WASTE LANDFILL
562213	SOLID WASTE COMBUSTORS AND INCINERATORS
56291	REMEDIATION SERVICES
56292	MATERIALS RECOVERY FACILITIES
562991	SEPTIC TANK AND RELATED SERVICES
562998	ALL OTHER MISCELLANEOUS WASTE MANAGEMENT SERVICES
61111	ELEMENTARY AND SECONDARY SCHOOLS
61131	COLLEGES, UNIVERSITIES, AND PROFESSIONAL SCHOOLS
61141	BUSINESS AND SECRETARIAL SCHOOLS
61142	COMPUTER TRAINING
61143	PROFESSIONAL AND MANAGEMENT DEVELOPMENT TRAINING
611511	COSMETOLOGY AND BARBER SCHOOLS
611512	FLIGHT TRAINING
611519	OTHER TECHNICAL AND TRADE SCHOOLS
61161	FINE ARTS SCHOOLS
61162	SPORTS AND RECREATION INSTRUCTION
61163	LANGUAGE SCHOOLS
611691	EXAM PREPARATION AND TUTORING
611692	AUTOMOBILE DRIVING SCHOOLS
611699	ALL OTHER MISCELLANEOUS SCHOOLS AND INSTRUCTION
61171	EDUCATIONAL SUPPORT SERVICES
621111	OFFICES OF PHYSICIANS (EXCEPT MENTAL HEALTH SPECIALISTS)
621112	OFFICES OF PHYSICIANS, MENTAL HEALTH SPECIALISTS
62121	OFFICES OF DENTISTS
62131	OFFICES OF CHIROPRACTORS
62132	OFFICES OF OPTOMETRISTS

NAICS	NAICS Description
62133	OFFICES OF MENTAL HEALTH PRACTITIONERS (EXCEPT PHYSICIANS)
62134	OFFICES OF PHYSICAL, OCCUPATIONAL AND SPEECH THERAPISTS, AND AUDIOLOGISTS
621391	OFFICES OF PODIATRISTS
621399	OFFICES OF ALL OTHER MISCELLANEOUS HEALTH PRACTITIONERS
62141	FAMILY PLANNING CENTERS
62142	OUTPATIENT MENTAL HEALTH AND SUBSTANCE ABUSE CENTERS
621493	FREESTANDING AMBULATORY SURGICAL AND EMERGENCY CENTERS
621498	ALL OTHER OUTPATIENT CARE CENTERS
621511	MEDICAL LABORATORIES
621512	DIAGNOSTIC IMAGING CENTERS
62161	HOME HEALTH CARE SERVICES
62191	AMBULANCE SERVICES
621991	BLOOD AND ORGAN BANKS
621999	ALL OTHER MISCELLANEOUS AMBULATORY HEALTH CARE SERVICES
62211	GENERAL MEDICAL AND SURGICAL HOSPITALS
62231	SPECIALTY (EXCEPT PSYCHIATRIC AND SUBSTANCE ABUSE) HOSPITALS
62311	NURSING CARE FACILITIES
62321	RESIDENTIAL MENTAL RETARDATION FACILITIES
623311	CONTINUING CARE RETIREMENT COMMUNITIES
623312	HOMES FOR THE ELDERLY
62399	OTHER RESIDENTIAL CARE FACILITIES
62411	CHILD AND YOUTH SERVICES
62412	SERVICES FOR THE ELDERLY AND PERSONS WITH DISABILITIES
62419	OTHER INDIVIDUAL AND FAMILY SERVICES
62421	COMMUNITY FOOD SERVICES
624229	OTHER COMMUNITY HOUSING SERVICES
62423	EMERGENCY AND OTHER RELIEF SERVICES
62431	VOCATIONAL REHABILITATION SERVICES
62441	CHILD DAY CARE SERVICES
71111	THEATER COMPANIES AND DINNER THEATERS
71112	DANCE COMPANIES
71113	MUSICAL GROUPS AND ARTISTS
71119	OTHER PERFORMING ARTS COMPANIES
711211	SPORTS TEAMS AND CLUBS
711212	RACETRACKS
71131	PROMOTERS OF PERFORMING ARTS, SPORTS, AND SIMILAR EVENTS WITH FACILITIES
71132	PROMOTERS OF PERFORMING ARTS, SPORTS, AND SIMILAR EVENTS WITHOUT FACILITIES
71141	AGENTS AND MANAGERS FOR ARTISTS, ATHLETES, ENTERTAINERS, AND OTHER PUBLIC FIGURES

NAICS	NAICS Description
71151	INDEPENDENT ARTISTS, WRITERS, AND PERFORMERS
71211	MUSEUMS
71212	HISTORICAL SITES
71213	ZOOS AND BOTANICAL GARDENS
71219	NATURE PARKS AND OTHER SIMILAR INSTITUTIONS
71311	AMUSEMENT AND THEME PARKS
71312	AMUSEMENT ARCADES
71321	CASINOS (EXCEPT CASINO HOTELS)
71329	OTHER GAMBLING INDUSTRIES
71391	GOLF COURSES AND COUNTRY CLUBS
71393	MARINAS
71394	FITNESS AND RECREATIONAL SPORTS CENTERS
71395	BOWLING CENTERS
71399	ALL OTHER AMUSEMENT AND RECREATION INDUSTRIES
72111	HOTELS (EXCEPT CASINO HOTELS) AND MOTELS
721191	BED-AND-BREAKFAST INNS
721199	ALL OTHER TRAVELER ACCOMMODATION
721211	RV (RECREATIONAL VEHICLE) PARKS AND CAMPGROUNDS
721214	RECREATIONAL AND VACATION CAMPS (EXCEPT CAMPGROUNDS)
72131	ROOMING AND BOARDING HOUSES
72211	FULL-SERVICE RESTAURANTS
722211	LIMITED-SERVICE RESTAURANTS
722213	SNACK AND NONALCOHOLIC BEVERAGE BARS
72231	FOOD SERVICE CONTRACTORS
72232	CATERERS
72241	DRINKING PLACES (ALCOHOLIC BEVERAGES)
811111	GENERAL AUTOMOTIVE REPAIR
811113	AUTOMOTIVE TRANSMISSION REPAIR
811118	OTHER AUTOMOTIVE MECHANICAL AND ELECTRICAL REPAIR AND MAINTENANCE
811121	AUTOMOTIVE BODY, PAINT, AND INTERIOR REPAIR AND MAINTENANCE
811122	AUTOMOTIVE GLASS REPLACEMENT SHOPS
811192	CAR WASHES
811198	ALL OTHER AUTOMOTIVE REPAIR AND MAINTENANCE
811211	CONSUMER ELECTRONICS REPAIR AND MAINTENANCE
811212	COMPUTER AND OFFICE MACHINE REPAIR AND MAINTENANCE
811213	COMMUNICATION EQUIPMENT REPAIR AND MAINTENANCE
811219	OTHER ELECTRONIC AND PRECISION EQUIPMENT REPAIR AND MAINTENANCE
81131	COMMERCIAL AND INDUSTRIAL MACHINERY AND EQUIPMENT (EXCEPT AUTOMOTIVE AND ELECTRONIC) REPAIR AND MAINTENANCE
811411	HOME AND GARDEN EQUIPMENT REPAIR AND MAINTENANCE
811412	APPLIANCE REPAIR AND MAINTENANCE
81142	REUPHOLSTERY AND FURNITURE REPAIR
81143	FOOTWEAR AND LEATHER GOODS REPAIR

NAICS	NAICS Description
81149	OTHER PERSONAL AND HOUSEHOLD GOODS REPAIR AND MAINTENANCE
812111	BARBER SHOPS
812112	BEAUTY SALONS
812113	NAIL SALONS
812191	DIET AND WEIGHT REDUCING CENTERS
812199	OTHER PERSONAL CARE SERVICES
81221	FUNERAL HOMES AND FUNERAL SERVICES
81222	CEMETERIES AND CREMATORIES
81231	COIN-OPERATED LAUNDRIES AND DRYCLEANERS
81232	DRYCLEANING AND LAUNDRY SERVICES (EXCEPT COIN-OPERATED)
812331	LINEN SUPPLY
812332	INDUSTRIAL LAUNDERERS
81291	PET CARE (EXCEPT VETERINARY) SERVICES
812921	PHOTOFINISHING LABORATORIES (EXCEPT ONE-HOUR)
812922	ONE-HOUR PHOTOFINISHING
81293	PARKING LOTS AND GARAGES
81299	ALL OTHER PERSONAL SERVICES
81311	RELIGIOUS ORGANIZATIONS
813211	GRANTMAKING FOUNDATIONS
813212	VOLUNTARY HEALTH ORGANIZATIONS
813311	HUMAN RIGHTS ORGANIZATIONS
813312	ENVIRONMENT, CONSERVATION AND WILDLIFE ORGANIZATIONS
813319	OTHER SOCIAL ADVOCACY ORGANIZATIONS
81341	CIVIC AND SOCIAL ORGANIZATIONS
81391	BUSINESS ASSOCIATIONS
81392	PROFESSIONAL ORGANIZATIONS
81393	LABOR UNIONS AND SIMILAR LABOR ORGANIZATIONS
81394	POLITICAL ORGANIZATIONS
81399	OTHER SIMILAR ORGANIZATIONS (EXCEPT BUSINESS, PROFESSIONAL, LABOR, AND POLITICAL ORGANIZATIONS)
81411	PRIVATE HOUSEHOLDS
92111	EXECUTIVE OFFICES
92112	LEGISLATIVE BODIES
92113	PUBLIC FINANCE ACTIVITIES
92115	AMERICAN INDIAN AND ALASKA NATIVE TRIBAL GOVERNMENTS
92119	OTHER GENERAL GOVERNMENT SUPPORT
92212	POLICE PROTECTION
92216	FIRE PROTECTION
92219	OTHER JUSTICE, PUBLIC ORDER, AND SAFETY ACTIVITIES
92311	ADMINISTRATION OF EDUCATION PROGRAMS
92312	ADMINISTRATION OF PUBLIC HEALTH PROGRAMS
92313	ADMINISTRATION OF HUMAN RESOURCE PROGRAMS (EXCEPT EDUCATION, PUBLIC HEALTH, AND VETERANS' AFFAIRS PROGRAMS)
92411	ADMINISTRATION OF AIR AND WATER RESOURCE AND SOLID WASTE MANAGEMENT PROGRAMS

NAICS	NAICS Description
92412	ADMINISTRATION OF CONSERVATION PROGRAMS
92511	ADMINISTRATION OF HOUSING PROGRAMS
92512	ADMINISTRATION OF URBAN PLANNING AND COMMUNITY AND RURAL DEVELOPMENT
92611	ADMINISTRATION OF GENERAL ECONOMIC PROGRAMS
92612	REGULATION AND ADMINISTRATION OF TRANSPORTATION PROGRAMS
92613	REGULATION AND ADMINISTRATION OF COMMUNICATIONS, ELECTRIC, GAS, AND OTHER UTILITIES
92615	REGULATION, LICENSING, AND INSPECTION OF MISCELLANEOUS COMMERCIAL SECTORS
92811	NATIONAL SECURITY
92812	INTERNATIONAL AFFAIRS

## Appendix F: Border Crossings and Customs Offices

---

### Explanation of the BOR look-up table columns

#### **BOR\_TYPE:**

The field indicates if an office is Independent, Subordinate or a Service site.

#### **PORT\_NO:**

Offices that have a number in this column and don't have a number in the REP\_TO column are usually **independent offices**, and they do not report through any other office or location.

#### **REP\_TO:**

This column presents the number and name of the independent office through which subordinate offices or service sites process their transactions.

#### **HUB:**

A HUB is an independent office to which a subordinate office would report. The field indicates if an office is a HUB or not.

#### **SERVICES:**

The abbreviations in this column indicate the specific services or activities available at the border offices.

<b>Services</b>	<b>Description</b>
AOE	Airport Of Entry
AOE/15/SEAPL	Seaplane Airport
AOE/C	Airport Of Entry/Canpass
AOE/C/SEAPL	Seaplane Canpass
AOE/CARGO	Airport Of Entry/Commercial
AOE/M	Airport Of Entry/Military
C/VESSE	Commercial Vessel
CAN/AIR	Canpass - Air
CAN/PB	Canpass - Private Boat
CLVS	Courier Low Value Shipments Program
CMC	Customs Mail Centre
CRC	Casual Refund Centre
CSO	Cruise Ship Operations
DCO	Designated Commercial Office
DRS/M	Direct Reporting Site For Marine Private Vessel
EDI	Electronic Data Interchange
EXPORT	Designated Export Office
FAST	Free And Secure Trade
FAST/DEC	Free And Secure Trade: Driver Enrollment Centers
FERRY	Ferry Terminal
HUB	Hub - Central Office
HWY/B	Highway - Land Border Office
IAS	Inland Alternate Service
IMM	Immigration
INLAND	Inland Customs Office
NEXUS/AIR	Nexus Air
NEXUS/HWY	Nexus Highway
NEXUS/MARINE	Nexus Marine

NTO	Non-Terminal Office
RAIL	Railway Depot
SHOP	Duty-Free Shop
SWH	Sufferance Warehouse / Highway
TRS/M	Telephone Reporting Site - Marine

**US\_PORT:**

U.S. customs office is opposite the Canadian customs office.

**Notes:**

- Offices that have a number in both **Port\_No** and **Rep\_To** columns are **subordinate offices** that generally process their transactions through another office. An Inland Alternate Service (IAS) site reports to an independent office called a hub. Subordinate offices have their number in the **Port\_No** column and the number and name of the office they report to in the **Rep\_To** column. Transactions may be processed using either number, depending on local preferences.
- **Service sites** such as sufferance warehouses and marinas usually do not have a distinct number. They process all their transactions using an independent office number.
- Customs offices and service sites include actual staffed customs offices, airports, vessel clearance terminals, offices that are serviced by staff from another location, sufferance warehouses, and Canpass locations. Not all locations or facilities provide all services, and some facilities may be restricted to certain types of traffic or classes of goods. Offices names followed by "IAS" indicate that they have been designated as an area that is serviced through the Inland Alternate Service program.
- The general office categories are, in descending order:
  - independent office and subordinate offices;
  - airports;
  - marine facilities;
  - rail stations and depots;
  - warehouses;
  - Canpass service sites.



## Appendix G: CPIC NATIONAL DIRECTORY

### English Abbreviations and Definitions

<b>A</b>			
AB	ALBERTA	CIS	CRIME INDEX SECTION/CRIMINAL INVESTIGATION SECTION
ACC	ACCIDENT	CISA	CRIMINAL INTELLIGENCE SERVICE ALBERTA
ACC	ADMINISTRATION COMMUNICATIONS CENTRE	CISBC	CRIMINAL INTELLIGENCE SERVICE BRITISH COLUMBIA
ACIIS	AUTOMATED CRIMINAL INTELLIGENCE INFORMATION SYSTEM	CISC	CRIMINAL INTELLIGENCE SERVICE CANADA
ADMIN	ADMINISTRATION/ADMINISTRATIVE	CISM	CRIMINAL INTELLIGENCE SERVICE MANITOBA
AE DIST	AVALON EAST DISTRICT	CISN	CRIMINAL INTELLIGENCE SERVICE NEWFOUNDLAND
AIR	AIRPORT	CISNB	CRIMINAL INTELLIGENCE SERVICE NEW BRUNSWICK
AMF	AIRPORT MAIL FACILITY	CISNS	CRIMINAL INTELLIGENCE SERVICE NOVA SCOTIA
AMT	AREA MANAGEMENT TEAM	CISO	CRIMINAL INTELLIGENCE SERVICE ONTARIO
A&P	ADMINISTRATION & PERSONNEL	CISS	CRIMINAL INTELLIGENCE SERVICE SASKATCHEWAN
ARU	ALTERNATE RESPONSE UNIT	CIU	CRIMINAL INTELLIGENCE UNIT
ATI	ACCESS TO INFORMATION	CIV	CIVIL/CIVILIAN
ATTF	AUTO THEFT TASK FORCE	CL	CIVIL LITIGATION
AVE	AVENUE	CLASS	CLASSIFICATION
<b>B</b>		CLEU	COORDINATED LAW ENFORCEMENT UNIT
BC	BRITISH COLUMBIA	C/M	CIVILIAN MEMBER
BLDG	BUILDING	CNI	CRIMINAL NAME INDEX
BLVD	BOULEVARD	CO	COMMANDING OFFICER
BNPP	BERESFORD/NIGADOO/PETIT-ROCHER/POINTE-VERTE	CO	COUNTY
BP DIST	BURIN PENINSULA DISTRICT	COB	CRIMINAL OPERATIONS BRANCH
BR	BRANCH	COMCENTRE	COMMUNICATIONS CENTRE
BSG DIST	BAY ST GEORGE DISTRICT	COMM	COMMUNICATIONS/COMMUNITY
BUR	BUREAU	COMP	COMPARTMENT
<b>C</b>		CON	CONTRACTS
CAL	CALGARY	CONST	CONSTABULARY
CAS	CRIMINAL ANALYSIS SECTION	CO-ORD	COORDINATOR/COORDINATION
C-B DIST	CLARENVILLE-BONAVISTA DISTRICT	CORRECT	CORRECTIONAL
CBS	CUSTOMS BORDER SERVICES	CORRES	CORRESPONDENCE
CCAPSD	COMMUNITY, CONTRACT & ABORIGINAL POLICING SERVICES	COS	CRIMINAL ORGANIZATION /OPERATIONS SECTION
CCB	COMMERCIAL CRIME BRANCH	CPC	CANADIAN POLICE COLLEGE/
CCIS	CALGARY CRIMINAL INTELLIGENCE SECTION	CPIC	CASE PROCESSING CENTRE
CCRA	CANADA CUSTOMS & REVENUE AGENCY		CANADIAN POLICE INFORMATION CENTRE
CCS	COMMERCIAL CRIME SECTION	CPO	CASE PRESENTATION OFFICER
CDIU	CENTRAL DRUG INFORMATION UNIT	CPR	CANADIAN PACIFIC RAILWAY
CDN	CANADIAN	CPSIC	CANADIAN POLICE SERVICES INFORMATION CENTRE
C&E	CUSTOMS & EXCISE	CR	CRESCENT
CEF	CONTAINER EXAMINATION FACILITY	CRS	CRIMINAL RECORDS SYNOPSIS
CE&T	CUSTOMS, EXCISE & TAXATION	CSAB	CORRECTIONAL SERVICE ALBERTA
CFC	CANADIAN FIREARMS CENTRE	CSBC	CORRECTIONAL SERVICE BRITISH COLUMBIA
CFDU	COMBINED FORCES DRUG UNIT	CSC	CORRECTIONAL SERVICE CANADA
CFSEU	COMBINED FORCES SPECIAL ENFORCEMENT UNIT	CSIS	CANADIAN SECURITY INTELLIGENCE SERVICE
CHARLT'N	CHARLOTTETOWN	CSMB	CORRECTIONAL SERVICE MANITOBA
CIB	CRIMINAL INVESTIGATION BRANCH	CSNB	CORRECTIONAL SERVICE NEW BRUNSWICK
CIC	CITIZEN & IMMIGRATION CANADA	CSO	CORRECTIONAL SERVICE ONTARIO
CID	CRIMINAL INTELLIGENCE DIRECTORATE	CSSK	CORRECTIONAL SERVICE SASKATCHEWAN
CIU	CALGARY INTEGRATED INTELLIGENCE UNIT		
CIR	CIRCLE		

CST	CONSTABLE	FBI	FEDERAL BUREAU OF
CTR	CENTRE		INVESTIGATION
CTY	CITY	FED	FEDERAL
	<b>D</b>	FES	FEDERAL ENFORCEMENT SECTION
		FIC	FINANCIAL INSTITUTIONS
D5	DISTRICT		COMMISSION
DCAS	DIVISION CRIMINAL ANALYSIS	FINGERPRT	FINGERPRINT
	SECTION	FINTRAC	FINANCIAL TRANSACTIONS AND
DCAU	DIVISION CRIMINAL ANALYTICAL		REPORTS ANALYSIS CENTRE OF
	UNIT	FIS	CANADA
DCIAS	DIVISIONAL CRIMINAL INFORMATION		FORENSIC IDENTIFICATION
	ANALYTICAL SECTION/DIVISION	FIU	SECTION
	CRIME INTELLIGENCE ANALYTICAL	FLR	FEDERAL INVESTIGATION UNIT
	SERVICE	FLSD	FLOOR
DEB	DRUG ENFORCEMENT BRANCH		FORENSIC LAB SERVICES
DEPT	DEPARTMENT	FNCPS	DIRECTORATE
DES	DRUG ENFORCEMENT SECTION		FIRST NATIONS COMMUNITY
DET	DETACHMENT	FOSS	POLICE SERVICE
DEOC	DIVISION EMERGENCY OPS		FIELD OPERATIONS SUPPORT
	COMCENTRE	FOT	SYSTEM
DEU	DRUG ENFORCEMENT UNIT	FPS	FEDERAL OPERATIONS TEAM
DHQ	DISTRICT HEADQUARTERS	FREDT'N	FINGERPRINT SECTION
DIFO	DRUG INTELLIGENCE & FIELD	FRY	FREDERICTON
	OPERATIONS	FSD	FREEWAY
DIR	DIRECTOR/DIRECTORATE	F&SD	FEDERAL SERVICES DIRECTORATE
DIST	DISTRICT	FSSB	FINANCE & SUPPLY DIRECTORATE
DIV	DIVISION	BRANCH	FINANCIAL SERVICES & SUPPLY
DL DIST	DEER LAKE DISTRICT		
DND	DEPARTMENT OF NATIONAL		<b>G</b>
	DEFENCE		
DOAC	DANGEROUS OFFENDERS	GD	GENERAL DELIVERY
	APPLICATIONS CENTRE	GF-W DIST	GRAND FALLS-WINDSOR DISTRICT
D&R	DETENTION & REMOVALS	GHQ	GENERAL HEADQUARTERS
DR	DRIVE	GIS	GENERAL INVESTIGATION SECTION
DSC	DIRECTORATE OF SECURITY	GST	GOODS AND SERVICES TAX
	CLEARANCES	GTEC	GREATER TORONTO
DSRR	DIVISIONAL STAFF RELATIONS		ENFORCEMENT SECTION
	REPRESENTATIVE		
	<b>E</b>		<b>H</b>
E	EAST	HAL	HALIFAX
ECD	ECONOMIC CRIME DIRECTORATE	HP	HIGHWAY PATROL
ECON	ECONOMIC	HQ	HEADQUARTERS
EDT'N	EDMONTON	HRP	HALIFAX REGIONAL POLICE
EDPS	EXECUTIVE DIPLOMATIC	HTS	HEIGHTS
	PROTECTION	HV-GOOSE BAY	HAPPY VALLEY-GOOSE BAY
	SECTION/ELECTRONIC DATA	HWY	HIGHWAY
	PROCESSING SECTION		
EEOC	EAST EUROPEAN ORGANIZED		<b>I</b>
	CRIME	IAP	INTERNATIONAL AIRPORT
E&I	ENFORCEMENT & INVESTIGATIONS	IB	INFORMATICS BRANCH
EIIU	EDMONTON INTEGRATED	I/C, IC	IN CHARGE
	INTELLIGENCE UNIT	I&C	INTELLIGENCE & CONTRABAND
ENF/ENFORCE	ENFORCEMENT	ICBC	INSURANCE CORPORATION OF
ERM	ENVIRONMENT & RESOURCE		BRITISH COLUMBIA
	MANAGEMENT	ICES	INTERNATIONAL CUSTOMS
ERT	EMERGENCY RESPONSE TEAM		ENFORCEMENT SYSTEM
ESO	ENFORCEMENT SERVICES OFFICER	ICPB	INSURANCE CRIME PREVENTION
EST	ESTABLISHMENT		BUREAU
ESU	ENFORCEMENT SUPPORT UNIT	ID	INFORMATICS DIRECTORATE
EU	ENFORCEMENT UNIT	IDENT	IDENTIFICATION
EXEC	EXECUTIVE	IFB	IMMIGRATION & FEDERAL BRANCH
	<b>F</b>	IFSB	INFORMATICS FIELD SUPPORT
			BRANCH
FAC	FIREARMS ACQUISITION	IIEU	INTEGRATED INTELLIGENCE
	CERTIFICATE	IIS	ENFORCEMENT UNIT
			IMMIGRATION INVESTIGATIVE
			SERVICE

I&ISD	INFORMATION & IDENTIFICATION SERVICES DIRECTORATE	MTRL	MONTREAL
IJIS	INTEGRATED JUSTICE INFORMATION SYSTEM	MUN	MUNICIPAL
ILB	INTERNATIONAL LIAISON BRANCH	MVB	MOTOR VEHICLES BRANCH
IL&POD	INTERNATIONAL LIAISON & PROTECTIVE OPERATIONS DIRECTORATE		<b>N</b>
IMS	INFORMATION MANAGEMENT SECTION	N	NORTH
IMU	INFORMATION MANAGEMENT UNIT	NAT'L	NATIONAL
INFO	INFORMATION/INFORMATICS	NB	NEW BRUNSWICK
INSET	INTEGRATED NATIONAL SECURITY ENFORCEMENT TEAM	NCIB	NATIONAL CRIME INTELLIGENCE BRANCH
INST	INSTITUTES/ INSTITUTION / INSTITUTIONAL	NCIC	NATIONAL CRIME INFORMATION CENTER
INTELL	INTELLIGENCE	NCIS	NATIONAL CRIME INTELLIGENCE SECTION
INTERN	INTERNAL	NCM	NON-COMMISSIONED MEMBER
INTERPOL	INTERNATIONAL POLICE	NCO	NON-COMMISSIONED OFFICER
INT'L	INTERNATIONAL	NE	NORTH EAST
INVEST	INVESTIGATION/INVESTIGATIVE	NEN	NORTH EAST NOVA
IPOC	INTEGRATED PROCEEDS OF CRIME	NF	NEWFOUNDLAND
IP/I&P	IMMIGRATION & PASSPORT	NHQ	NATIONAL HEADQUARTERS
IPPC	INTEGRATED POLICE PLANNING COMMITTEE	NICB	NATIONAL INSURANCE CRIME BUREAU
IPS	IMMIGRATION & PASSPORT SECTION	NLETS	NATIONAL LAW ENFORCEMENT TELECOMMUNICATIONS SYSTEM
IPSO	INSTITUTIONAL PREVENTIVE SECURITY OFFICER	NP DIST	NORTHERN PENINSULA DISTRICT
ISTB	INFORMATION SYSTEM & TECHNOLOGY BRANCH	NS	NOVA SCOTIA
IU	INVESTIGATION UNIT	NSI	NATIONAL SECURITY INTELLIGENCE SERVICE
IWRC	IMMIGRATION WARRANT RESPONSE CENTRE	NSIS	NATIONAL SECURITY INTELLIGENCE SERVICE
	<b>J</b>	NSIU	NATIONAL SECURITY INVESTIGATIONS UNIT
JCT	JUNCTION	NSS	NETWORK SERVICES SECTION
JFO	JOINT FORCES OPERATIONS	NW	NORTH WEST
JPST	JOINT POLICE SECURITY TEAM	NT	NORTHWEST TERRITORIES
JSFU	JOINT SECURITY FRAUD UNIT	NU	NUNAVUT
	<b>L</b>		<b>O</b>
L DIST	LABRADOR DISTRICT	OC	OFFICER COMMANDING
LAB	LABORATORY	OCC	OPERATIONAL COMMUNICATIONS CENTRE
LB	LESTER B.	OCS	ORGANIZED CRIME SECTION
LBPIAP	LESTER B. PEARSON INTERNATIONAL AIRPORT	OIC,O I/C	OFFICER IN CHARGE
LIT	LITIGATION	OIS	OPERATIONAL INFORMATION SYSTEMS
LMD	LOWER MAINLAND DISTRICT	ON	ONTARIO
	<b>M</b>	OP	OPERATIONAL
MB	MANITOBA	OPF	ONTARIO POLICE FORCES
MBBC	MIGRATORY BIRD CONTROL	OPP	ONTARIO PROVINCIAL POLICE
MCU	MAJOR CRIMES UNIT	OPS	OPERATIONS
METRO	METROPOLITAN	OPS.OFF.	OFFSHORE SURV.
MGR	MANAGER		OPERATIONS OFFICER OFFSHORE SURVEILLANCE
MGT	MANAGEMENT	ORI:	ORIGINATOR NUMBER
MIIU	METRO INTEGRATED INTELLIGENCE UNIT	OSS	OPERATIONAL SUPPORT SECTION
M.LEG	MAIN LEGISLATIVE	OTT	OTTAWA
MO	MAIN OFFICE		<b>P</b>
MPIC	MANITOBA PUBLIC INSURANCE CORPORATION	P.A.B.	PORT-AUX-BASQUES
MRU	MOBILE RESPONSE UNIT	PA&ID	PUBLIC AFFAIRS & INFORMATION DIRECTORATE
MT	MOUNT	PB	PRIVACY BRANCH
MTD	MOUNTED	PC	POSTAL CODE
MTN	MOUNTAIN	PCA	POLICE CAR ACCIDENTS
		PCI	PUBLIC COMPLAINTS INVESTIGATIONS
		PD	POLICE DEPARTMENT

PDRC	POST DETERMINATION REFUGEE CLASS	SECUR	SECURITY SERVICE(S)
PDS	POLICE DOG SERVICES	SERV	SPECIAL ENFORCEMENT UNIT
PE	PRINCE EDWARD ISLAND	SEU	STATE IDENTIFICATION
PEN	PENITENTIARY	SID	SPECIAL INVESTIGATION SECTION
PERS	PERSONNEL	SIS	SPECIAL INVESTIGATION UNIT
PEU	PARKING ENFORCEMENT UNIT	SIU	SASKATCHEWAN
PF	POLICE FORCE	SK	SUB-OFFICE
PIRS	POLICE INFORMATION RETRIEVAL SYSTEM	S/O	SPECIAL
PK	PARK	SP'L	SECURITY & QUALITY CONTROL
PI	PLACE	SQC	SQUADRON
PLID	PLAIN LANGUAGE IDENTIFIER	SQUAD	SENIOR REGIONAL ENFORCEMENT
PO	POST OFFICE	SR. RES OFFICER	SERVICES OFFICER
POC	PROCEEDS OF CRIME	SS	SECURITY SERVICE
POE	PORT OF ENTRY	ST	STREET
POL	POLICING	ST/STE	SAINT(E)
PORNO	PORNOGRAPHY/PORNOGRAPHIC	STN	STATION
PPD	PROTECTIVE POLICING	SUB-REG	SUB-REGISTRY
	DIRECTORATE	SW	SOUTH WEST
PROB	PROBATION	SYS	SYSTEM(S)
PROT	PROTECTION/PROTECTIVE		<b>T</b>
PROV	PROVINCIAL		
PPS	POLICE SERVICE(S)	TA	TEMPORARY ABSENCES
PSP	POLICE SUPPORT PROGRAMS	TC DIST	TRINITY CONCEPTION DISTRICT
PSU	PERSONNEL SECURITY UNIT	T&D	TRAINING & DEVELOPMENT
PVT	PRIVATE	TECH	TECHNICAL
P-W DIST	PLACENTIA-WHITBOURNE DISTRICT	TELECOM	TELECOMMUNICATIONS
	<b>Q</b>	TEMP	TEMPORARY
		TF	TASK FORCE
		TLBPIA	TORONTO LESTER B. PEARSON
QC	QUEBEC (CITY/PROVINCE)		INTERNATIONAL AIRPORT
	<b>R</b>	TOD	TECHNICAL OPERATIONS
			DIRECTORATE
RCMP	ROYAL CANADIAN MOUNTED	TOR	TORONTO
	POLICE	TOSS	TECHNICAL OPERATIONS SUPPORT
RD	ROAD		SYSTEM
REC	RECORDS	TPOF	TECHNICAL AND PROTECTIVE
RECNST	RECONSTRUCTION		OPERATIONS FACILITY
REG	REGION/REGIONAL	TSO	TAXATION SERVICE OFFICE
REGISTR	REGISTRATION/REGISTRY	TWP	TOWNSHIP
REL	RELATIONS		<b>V</b>
RHQ	REGIONAL HEADQUARTERS		
RIIU	REGINA INTELLIGENCE	VANC	VANCOUVER
	INTEGRATED UNIT	VCAS	VIOLENT CRIME ANALYSIS SECTION
RM	ROOM/RURAL MUNICIPALITY	VICLAS	VIOLENT CRIME LINKAGE ANALYSIS
RMS	RECORDS MANAGEMENT SECTION		SYSTEM
RPC	REGIONAL PSYCHIATRIC CENTRE	VIIU	VANCOUVER INTEGRATED
RPO	POSTAL OUTLET		INTELLIGENCE UNIT
RPU	REFUGEE PROCESSING UNIT	VIN	VEHICLE IDENTIFICATION NUMBER
RR	RURAL ROUTE	VIP	VERY IMPORTANT PERSONS
RTE	ROUTE	VS	VICTIMS' SERVICES
	<b>S</b>		<b>W</b>
S	SOUTH	W	WEST
SAS	SEXUAL ASSAULT SECTION	WARR	WARRANT(S)
SCQ	SECURITY & QUALITY CONTROL	WE&EI	WILDLIFE ENFORCEMENT AND
SCS	SERIOUS CRIME SECTION		ENVIRONMENT INTELLIGENCE
SCU	SERIOUS CRIME UNIT/SECURITY	WL&AP	WATER, LAND & AIR PROTECTION
	CLEARANCE UNIT	WPG	WINNIPEG
S/D	SUB-DIVISION		<b>Y</b>
S/DET	SUB-DETACHMENT		
SE	SOUTH EAST		
SEC	SECTION	YT	YUKON TERRITORY

## French Abréviations et Équivalents

### A

AB	ALBERTA
AC	AGENT DE LIAISON
ACT	ACTIVITÉ
AD&I	ACCISE, DOUANES ET IMPÔT
ADM	ADMINISTRATION/ADMINISTRATIVE
ADRC	AGENCE DES DOUANES & DU REVENU DU CANADA
APPL	APPLICATION
AT	ABSENCES TEMPORARIES
AV	AVENUE

### B

BC	COLOMBIE-BRITANNIQUE
BCS	BUREAU CONTRÔLE DES SOURCES
BL	BUREAU DE LIAISON
BDNC	BANQUE NATIONAL DES DONNEES CRIMINELLES
BOUL	BOULEVARD
BR	BUREAU REGIONAL
BRQCO	BUREAU DE RECHERCHES DU QUÉBEC SUR LE CRIME ORGANIZE
BST	BUREAU SERVIENCE DE TERRITOIRE
BUR	BUREAU

### C

CAAF	CERTIFICATE D'ACQUISITION D'ARME À FEU
CAF	CONTROLEUR DES ARMES A FEU
CANT	CANTON
CDT S.-DIV.	COMMANDANT SOUS-DIVISIONNAIRE
CE	CONTRÔLE DES EFFETS
CH	CHEMIN
CIC	CITOYENNETÉ ET IMMIGRATION CANADA
CIPC	CENTRE D'INFORMATION DE LA POLICE CANADIENNE
CISCP	CENTRE D'INFORMATION DES SERVICES CANADIENS DE POLICE
CIV	CIVIL(E)
CJS	CASIER JUDICIAIRES SYNOPTIQUES
CO	CENTRED'OPERATION
COMM	COMMUNAUTE/ COMMUNICATIONS/COMMUTATION
CONTR	CONTROLE
CONURB	CONURBATION
COORD	COORDINATION/COORDONNATEUR
CP	CASIER POSTAL
CQ	CONTROLE QUALITE
CR	CRIMINEL(LES)
CRIM	CRIMINEL(LES)
CRPQ	CENTRE DE RENSEIGNEMENTS POLICIERS DU QUEBEC
CRU	CENTRE RENVOIS UNIFIE
CSSP	CENTRE SERVICE EN SECURITE PUBLIQUE
CTE	COMTE
CTR	CENTER

### D

D-5	DISTRICT 5
DA	COUANES ET ACCISE
DC	DELITS COMMERCIAUX
DEC	DIVISION DES ENQUETES
DEV	DEVELOPPEMENT
DG	DIRECTION GENERALE
DIR	DIRECTION
DIST	DISTRICT
DIV	DIVISION(NAIRE)
DSTEC	DIVISION SOUTIEN TECHNIQUE ENQUETES CRIMINELLS

### E

E	EST
EC	ENQUETES CRIMINEL (LES)
ECM	ESCOUADE CRIMINAL MAJEURS
EC/ST	ENQUETES CRIMINEL(LES) /SUPPORT TECHNIQUE
ECO	ESCOUADE CRIME ORGANISE
EF	ENQUETES FRONTALIERES
EG	ENQUETES GENERALES
ENQ	ENQUETES
ERAM	ESCOUDE REGIONALE ALCOOL ET MORALITE
ERM	ESCOUADE REGIONALE DES MOEURS
ES	ENQUETES SPECIALES /SPECIALISEES
ESS	ENQUETES SPECIAL SECURITE
ETAB	ETABLISSEMENT

**F**

FED	FEDERAL(ES)
FIN	FINANCIER/FINANCIERES
FJN	FICHIER JUDICIAIRE NOMINATIF

**G**

GCI	GROUPE DE CONTROLE ET DE L'INFORMATION
GEN	GENERAL (E)
GOVERN	GOUVERNEMENT
GPC	GROUPE DES PRODUITS DE LA CRIMINALITE
GQG	GRAND QUARTIER GENERAL
GRC	GENDARMERIE ROYALE DU CANADA

**H**

HUM	HUMAINES
-----	----------

**I**

ICJ	INFORMATION DES CASIERS JUDICIAIRES
ID	IDENTITE
IND:	INDICATIF
INFO	INFORMATION/INFORMATIQUE/ INFORMATISES
INT'L	INTERNATIONALE
IP	IMMIGRATION ET PASSEPORT
IRC	INTERVENTION REGION CENTRE

**J**

JUD	JUDICIAIRE
-----	------------

**L**

LOC	LOCAL
-----	-------

**M**

M/MON	MONITEUR
MAT	MATERIEL
MB	MANITOBA
MDN	MINISTERE DE LA DEFENSE NATIONALE
MGR	MONSEIGNEUR
MIG	MIGRATION
MLL	MONTREAL, LAVAL, LAURENTIDES & LANAUDIER
MRC	MUNICIPALITE REGIONALE DE COMPTE
MSI	MONITEUR SYSTEMES INFORMATISES
MT	MONT
MTRL	MONTREAL
MUN	MUNICIPAL

**N**

N	NORD
NAT'L	NATIONAL(E)
NB	NOUVEAU-BRUNSWICK
NE	NORD-EST
NF	TERRE-NEUVE
NIV	NUMEROS D'IDENTIFICATION DE VEHICULES
NOR	NORANDA
NOUV	NOUVEAU
NS	NOUVELLE-ECOSSE
NT	TERRITOIRES DU NORD-OUEST
NU	NUNAVUT

**O**

O	OUEST
OFF.	OFFICIER
OFF.DIV.	OFFICIER DIVISIONNAIRE
OFF. RESP.	OFFICIER RESPONSIBLE
OIX	OISEAUX
ON	ONTARIO
OP/OPER	OPERATIONNEL (LES)

**P**

PC	PRODUITS DE LA CRIMINALITE
PDQ	POSTE DE QUARTIER
PE	ILE-DU-PRINCE EDOUARD
POL	POLICERES
PR	PATROUILLE ROUTIERE
PROM	PROMENADE
PROT	PROTECTION

**Q**

QC	QUEBEC (VILLE OU PROVINCE)
QG	QUARTIER GENERAL
QGD/QG	QUARTIER GENERAL DE DISTRICT
DISTRICT	
QU/QUAL	QUALITE

**R**

RACJ	REGIE ALCOOL COURSES ET JEUX
RC	RENSEIGNEMENTS CRIMINALS
REG	REGION/REGIONAL(E)
REL	RELATIONS
RENS	RENSEIGNEMENT(S)
REPRESS	REPRESSION
RESP	RESPONSABLE
RESS	RESSOURCES
ROUT	ROUTIER/ROUTIERE
RS	RENSEIGNEMENTS SECURITE
RSO	RAPPORTS STATISTIQUES SUR LES OPERATIONS
RTE	ROUTE

**S**

S	SUD
SAAQ	SOCIETE ASSURANCE AUTOMOBILE QUEBEC
SARC	SYSTEME AUTOMATISE DES RENSEIGNEMENTS CRIMINELS
SAU	SERVICES AUX USAGERS
SCC	SERVICE CORRECTIONNEL CANADA
SCQ	SERVICE CORRECTIONAL DU QUEBEC
SCRS	SERVICE CANADIEN DU RENSEIGNEMENT+DE SECURITE
SD	SERVICE DIVISIONNAIRE
S-D	SOUS-DIVISION
SDAIC	SERVICE DIVISIONNAIRE DES ANALYSES DES INFORMATIONS CRIMINELLES
SDC	SECTION DES DELITS COMMERCIAUX
SDEC	SERVICE DIVISIONNAIRE DES ENQUETES

S-DIC	CRIMINELLES SOUS-DIRECTION DES INFRACTIONS COMMERCIALES
S.-DIV.	SOUS-DIVISION
S.-DON/ S.-DIRECTION	SOUS DIRECTION
SDRC	SERVICE DIVISIONNAIRE RENSEIGNEMENTS CRIMINELS
SEC	SECURITE
SECT	SECTION
SEEA	SECTION ENQUETES ECONOMIQUES ANTIDROGUE
SEF	SECTION ENQUETES FRONTALIERES
SEG	SECTION ENQUETES GENERALES
SELF	SECTION ENQUETES LOIS FEDERALES
SEM	SEMAINE
SENS	SENSIBILISATION
SERV	SERVICE(S)
SESN	SECTION ENQUETES RELATIVES A LA SECURITE NATIONALE
SESS	SERVICE ENQUETES SPECIALE SECURITE
SFD	SERVICE FRONTALIER DES DOUANES
SFJ	SECTION DU FICHIER/JUDICIAIRE
SLAD	SECTION LUTTE ANTIDROGUE
SM	SURETE MUNICIPALE DU QUEBEC
S.OFF. RESP	SOUS-OFFICIER RESPONSABLE
SP	SERVICE DE POLICE
SPC	SECTION POLICE CRIMINELLE
SPCUM	SERVICE DE POLICE DE LA COMMUNAUTE URBAINE DE MONTREAL
SPEC	SPECIAL(E)
SPPCAD	SECTION DE LA PROTECTION DES PERSONNALITES CANADIEN ET AGENTS DIPLOMATIQUES
SPVM	SERVICE DE POLICE DE LA VILLE DE MONTREAL
SQ	SURETE DU QUEBEC
SRAC	SECTION RENSEIGNEMENTS ET ANALYSES CRIMINALS
SRC	SECTION/SERVICE DES RENSEIGNEMENTS CRIMINELLES
SRCMD	SECTION DES RENSEIGNEMENTS CRIMINELS MORALITE ET DROGUE
SRCQ	SERVICE DES RENSEIGNEMENTS CRIMINELLES DU QUEBEC
SRR	SYSTEME DE RAPPORTS DE POLICE
SR/TR	SECURITE ROUTIERE ET TRANSPORT ROUTIER
SS	SERVICE DE SECURITE
SSID	SECTION SECURITE INTEGRATION DES DONNEES
SSR	SECTION DES SERVICES DU RESEAU
ST/STE	SAINT(E)
STO	STATION DE TRANSMISSIONS OPERATIONNELLES
SUCC	SUCCURSALE
SUPP	SUPPORT
SUR	SURETE
SURV	SURVEILLANCE
SYST	SYSTEME(S)

# T

TECHN	TECHNIQUE
TELECOMM	TELECOMMUNICATIONS
TEMIS	TEMISCAMINGUE
TERR	TERRITOIRE
TRAF	TRAFFICANTS
TRANSM	TRANSMISSION
TRANSP	TRANSPORT



**U**

ULF	UNITE DES LOIS FEDERALES
URC	UNITE RENSEIGNEMENTS CRIMINELS
URCOMM	UNITE RELATIONS COMMUNATAIRE
URS	UNITE RENSEIGNEMENTS SECURITE
USR	UNITE SECURITE ROUTIERE
USRTR	UNITE SECURITE ROUTIERE ET TRANSPORT ROUTIER
USTEC	UNITE SOUTIEN TECHNIQUE ENQUETES CRIMINELS

**V**

VERIF.	VERIFICATION
--------	--------------

**Y**

YT	YUKON
----	-------

## **Appendix H: ISO 19115:2003 Compliant Metadata**

---

### **Metadata Notification**

As of May 15<sup>th</sup> 2005, DMTI Spatial data products have metadata that are ISO 19115:2003 compliant.

This product now includes structured metadata files as provided in XML and/or HTM format. These metadata files reside with the graphic or database files to which they are associated. It is recommended that users review and customize the metadata as per their specific needs.

This latest addition to the CanMap<sup>®</sup> line of products is another enhancement that will benefit our users and increase overall product satisfaction.



**About DMTI Spatial:**

DMTI has been providing industry leading enterprise Location Intelligence solutions for more than a decade to Global 2000 companies and government agencies. DMTI's world-class Location Hub® platform uniquely identifies, validates and maintains a universe of location-based data. DMTI is the creator of market leading Mapping Solutions and maintains the gold standard for GIS location-based data in Canada.

**Contacting DMTI Spatial :**

Email: [info@dmτισpatial.com](mailto:info@dmτισpatial.com)  
Phone: (877) 477-3684  
Fax: (905) 948-9404